

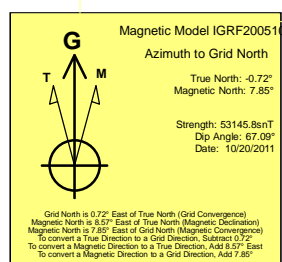
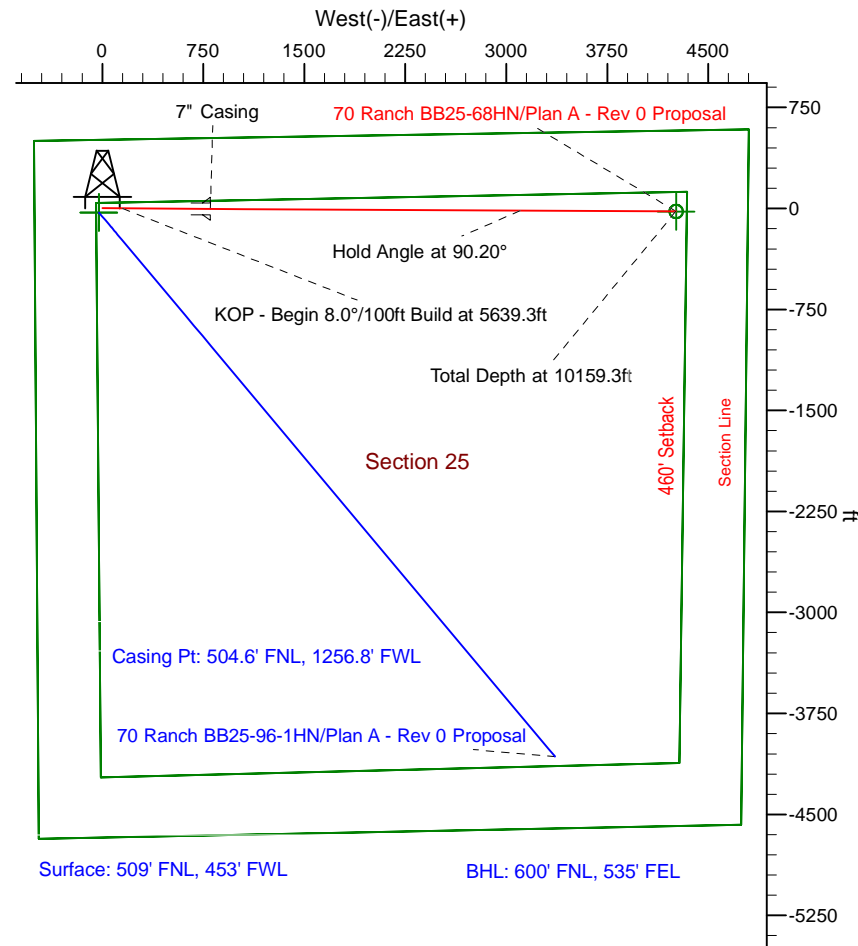
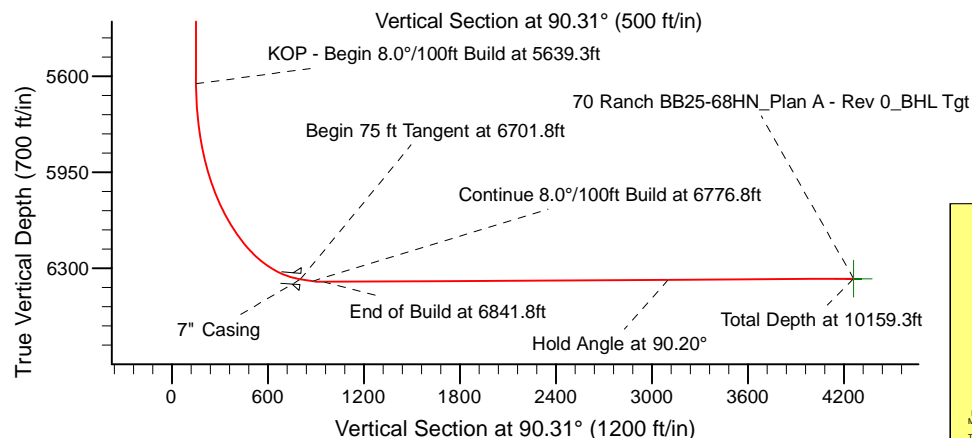
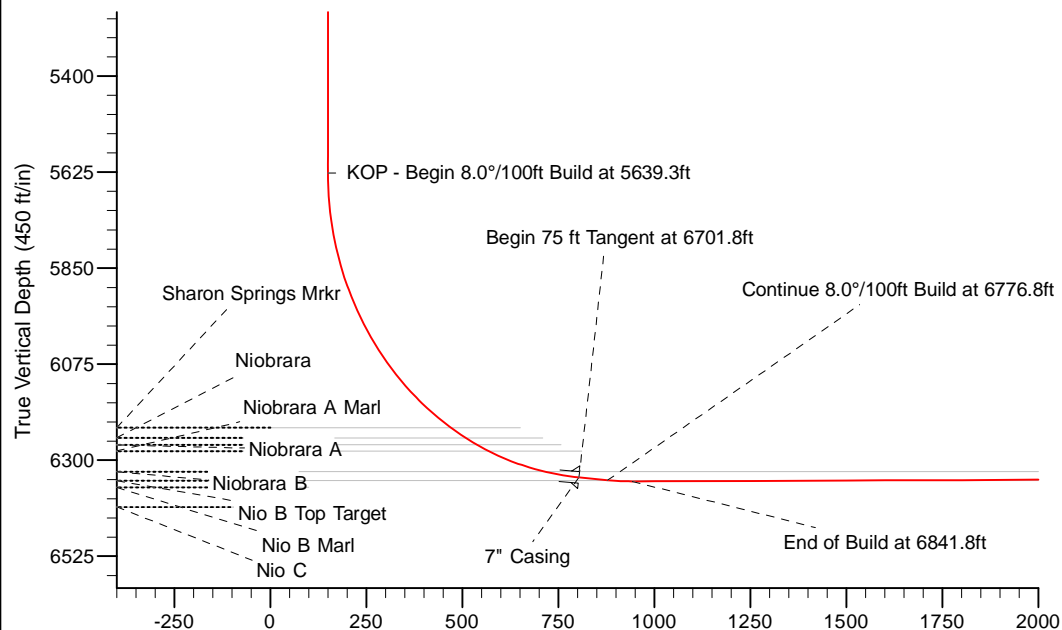
Project: Weld County Colorado (NAD 83)
 Site: Sec.25, T5N, R63W
 Well: 70 Ranch BB25-68HN
 Wellbore: Plan A - Rev 0 (PERMITTING PLAN ONLY)
 Design: Plan A - Rev 0 Proposal

Noble Energy

HALLIBURTON
 Consulting

SECTION DETAILS

Sec	MD	Inc	Azi	TVD	+N/-S	+E/-W	Dleg	TFace	VSec	Target
1	0.0	0.00	0.00	0.0	0.0	0.0	0.00	0.00	0.0	
2	2000.0	0.00	0.00	2000.0	0.0	0.0	0.00	0.00	0.0	
3	2480.0	12.00	90.31	2476.5	-0.3	50.1	2.50	90.31	50.1	
4	2719.7	12.00	90.31	2711.0	-0.5	99.9	0.00	0.00	99.9	
5	3199.7	0.00	0.00	3187.5	-0.8	150.0	2.50	180.00	150.0	
6	4012.2	0.00	0.00	4000.0	-0.8	150.0	0.00	0.00	150.0	
7	5639.3	0.00	0.00	5627.1	-0.8	150.0	0.00	0.00	150.0	
8	6701.8	85.00	90.31	6340.6	-4.4	803.8	8.00	90.31	803.8	
9	6776.8	85.00	90.31	6347.1	-4.8	878.5	0.00	0.00	878.5	
10	6841.8	90.20	90.31	6349.8	-5.1	943.4	8.00	0.00	943.4	
11	10159.3	90.20	90.30	6338.1	-22.9	4260.7	0.00	-51.54	4260.8	70 Ranch BB25-68HN_Plan A - Rev 0_BHL Tgt



WELL DETAILS: 70 Ranch BB25-68HN (NAD83 Geodetic System)					
Ground Level: 4564.0					
North	East	Lat	Longitude		
0.0	0.0	421158.06	1008488.38	40° 22' 33.636 N	104° 23' 31.308 W
Plan: Plan A - Rev 0 Proposal (70 Ranch BB25-68HN/Plan A - Rev 0 (PERMITTING PLAN ONLY))					
Created By: Erika Cuauero Garcia Date: 14:25, October 26 2011					
OK to submit with 2A as per Noble Drilling					
10/26/2011 15:59					