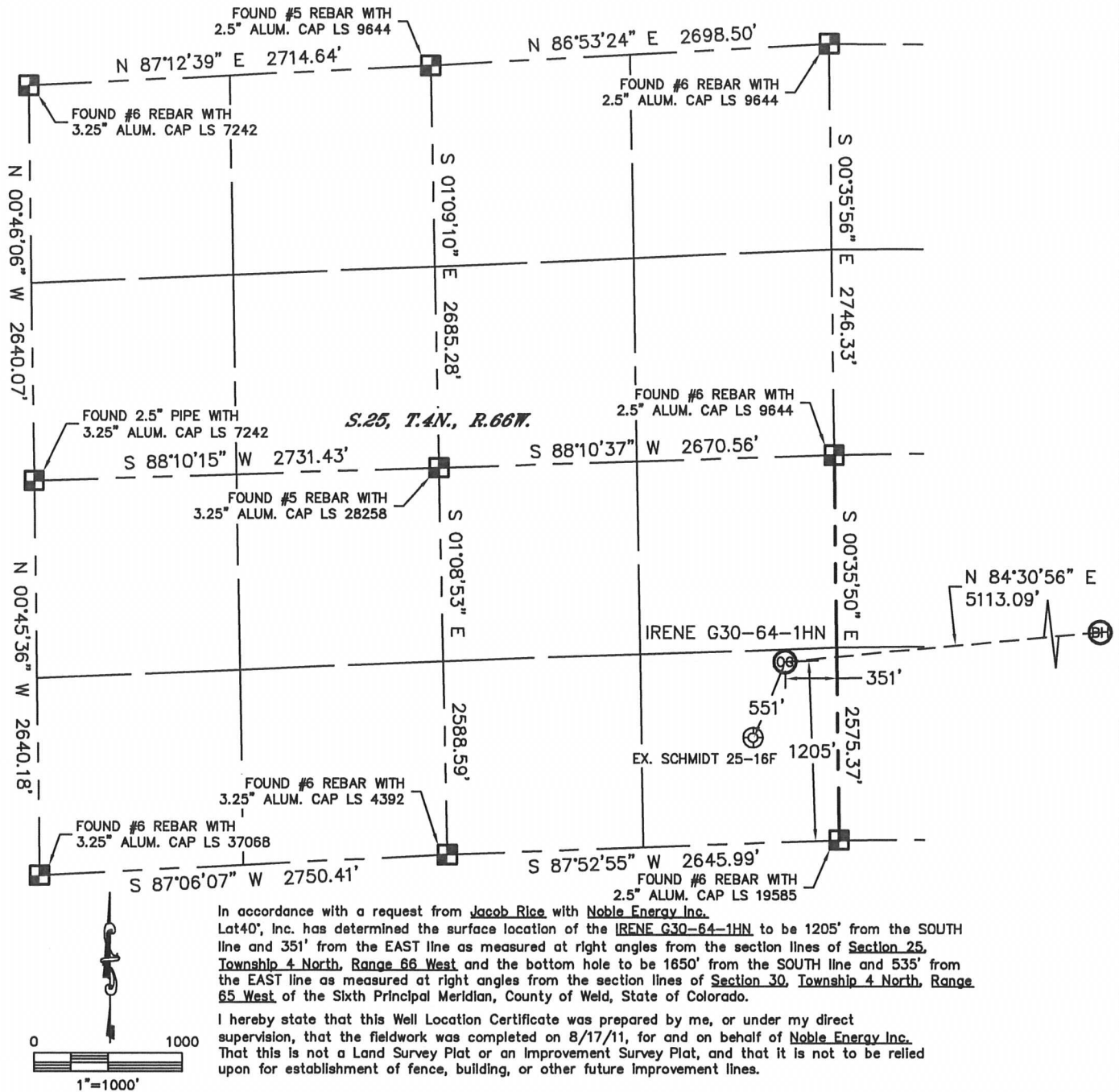


WELL LOCATION CERTIFICATE

THIS MAP DOES NOT REPRESENT A BOUNDARY SURVEY

SECTION: 25
TOWNSHIP: 4N
RANGE: 66W



NOTE:

- 1) Bearings shown are Grid Bearings of the Colorado State Plane Coordinate System, North Zone, North American Datum 1983/2007. The lineal dimensions as contained herein are based upon the "U.S. Survey Foot."
- 2) Ground elevations are based on an observed GPS elevation (NAVD 1988 DATUM).
- 3) NEAREST EXISTING WELL (WITHIN SECTION): SCHMIDT 25-16F, 551'
- 4) IMPROVEMENTS: See LOCATION DRAWING for all visible improvements within 400' of disturbed area.
- 5) SURFACE USE: PASTURE
- 6) INSTRUMENT OPERATOR: BRIAN BRINKMAN

NOTE

According to Colorado law, you must commence any legal action based upon any defect in this W.L.C. within three years after you discover such defect. In no event, may any action based upon any defect in this survey be commenced more than ten years after the date of the certificate shown hereon. (13-80-105 C.R.S.)

LEGEND

- = ALIQUOT MONUMENT AS DESCRIBED
- = CALCULATED POSITION

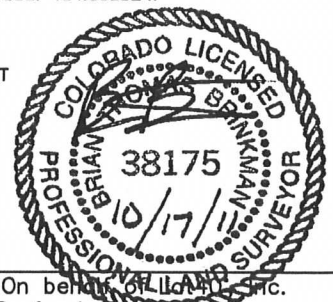
SURFACE LOCATION
LATITUDE: 40.27950°N
LONGITUDE: 104.71678°W
PDOP: 1.5
ELEV: 4801'
1/4, 1/4: SE1/4SE1/4
NEAREST PROPERTY LINE: 351' EAST

BOTTOM HOLE
LATITUDE: 40.28071°N
LONGITUDE: 104.69852°W

(SHEET 1 OF 2)

Brian T. Brinkman—On behalf of Lat40°, Inc.
Colorado Licensed Professional
Land Surveyor No. 38175

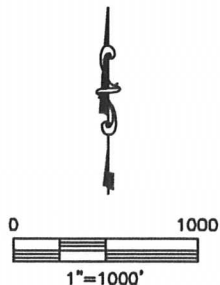
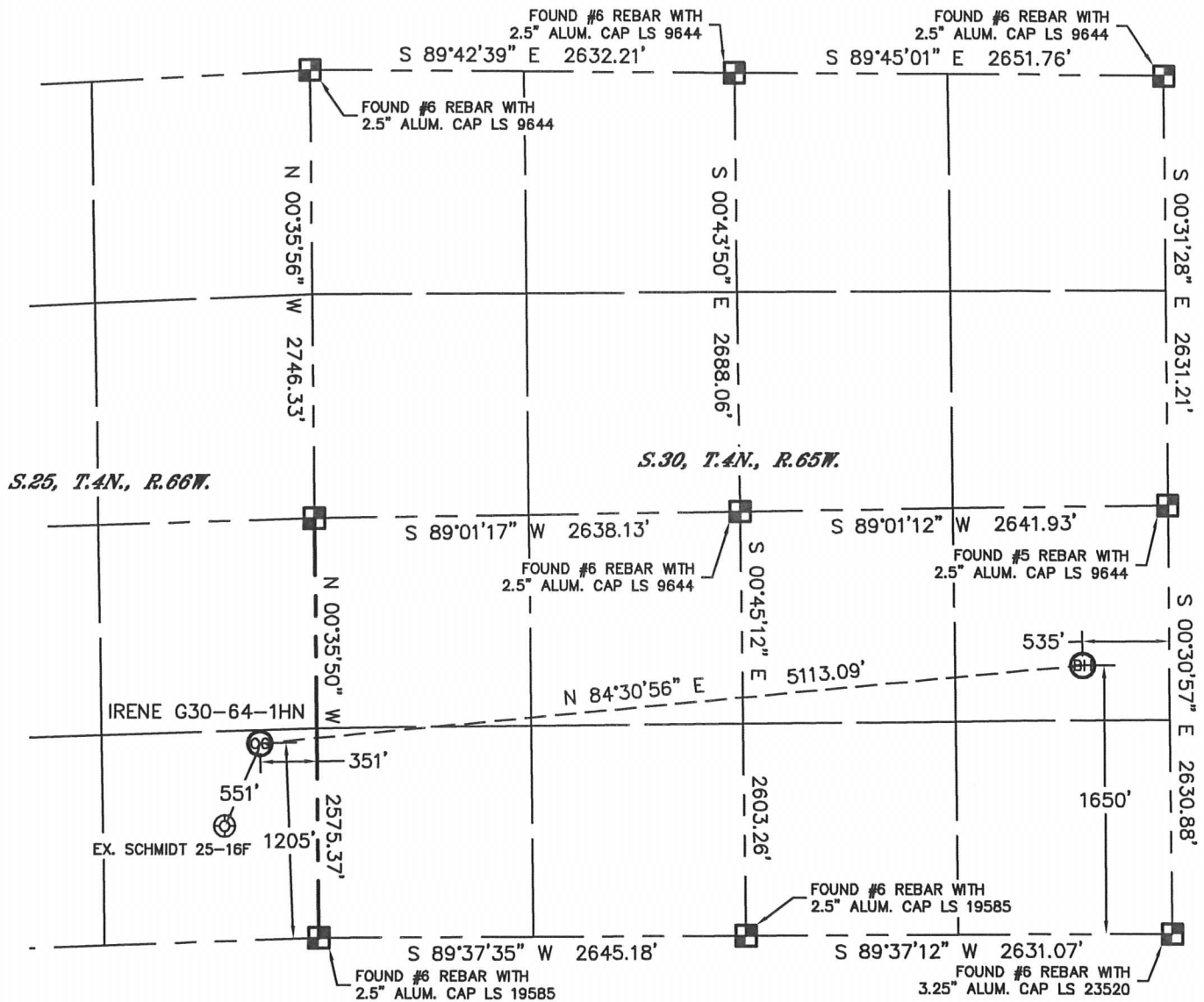
PROJECT#: 2011075



WELL LOCATION CERTIFICATE

THIS MAP DOES NOT REPRESENT A BOUNDARY SURVEY



SECTION: 25
TOWNSHIP: 4N
RANGE: 66W



NOTE

According to Colorado law, you must commence any legal action based upon any defect in this W.L.C. within three years after you discover such defect. In no event, may any action based upon any defect in this survey be commenced more than ten years after the date of the certificate shown hereon. (13-80-105 C.R.S.)

LEGEND

-  = ALIQUOT MONUMENT AS DESCRIBED
-  = CALCULATED POSITION

(SHEET 2 OF 2)

Brian T. Brinkman—On behalf of Lat40°, Inc.
Colorado Licensed Professional
Land Surveyor No. 38175

PROJECT#: 2011075



Lat40°, Inc.

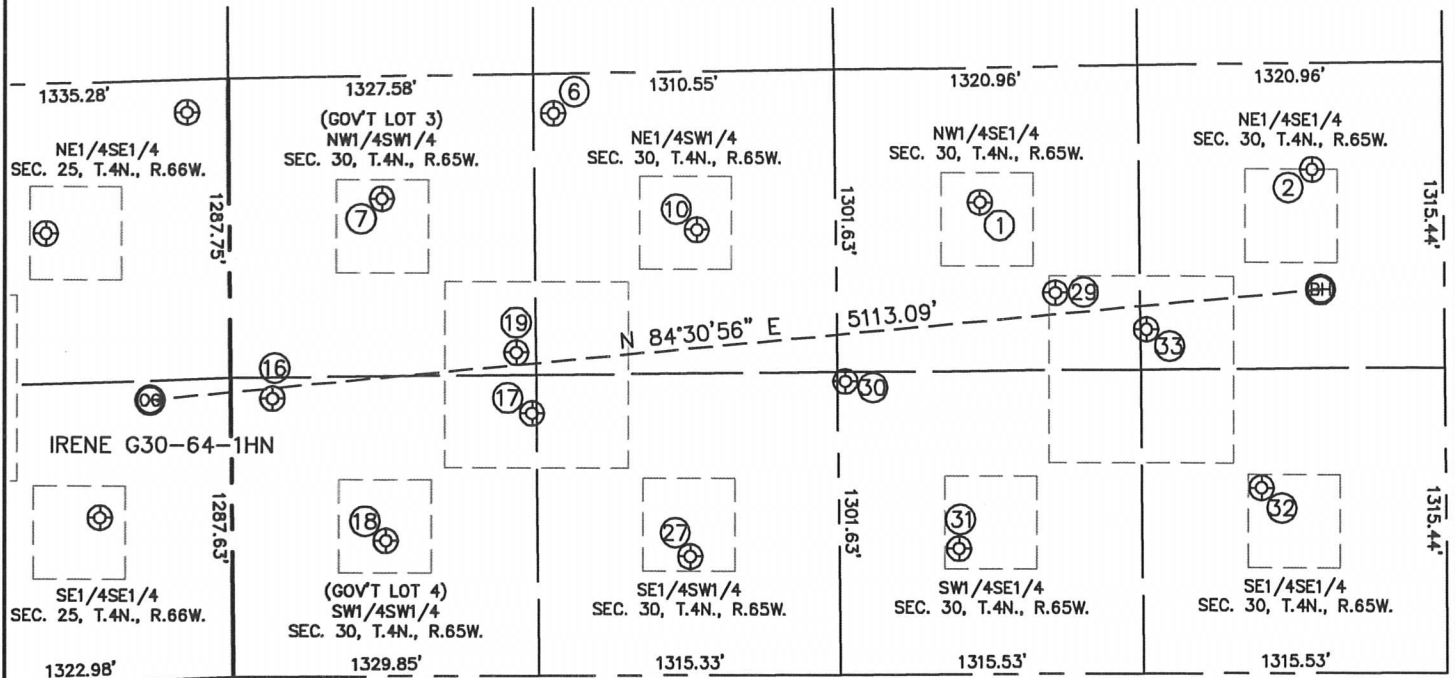
1635 Foxtrail Drive, Suite 325

Loveland, CO 80538

SITE SKETCH

IRENE G30-64-1HN

SECTION: 25
TOWNSHIP: 4N
RANGE: 66W



①

OSTER G30-10
NW1/4SE1/4
2030' FSL
2011' FEL
LAT-40.28177°N
LONG-104.70381°W
PDOP: 3.0
ELEV: 4827'

②

OSTER G30-9
NE1/4SE1/4
2167' FSL
568' FEL
LAT-40.28213°N
LONG-104.69864°W
PDOP: 3.1
ELEV: 4837'

⑥

SCHMIDT G30-20
NE1/4SW1/4
2419' FSL
1413' FWL
LAT-40.28285°N
LONG-104.71046°W
PDOP: 2.8
ELEV: 4801'

⑦

SCHMIDT 30-12G
NW1/4SW1/4
2055' FSL
663' FWL
LAT-40.28185°N
LONG-104.71315°W
PDOP: 1.9
ELEV: 4802'

⑩

SCHMIDT 30-11G
NE1/4SW1/4
1916' FSL
2035' FWL
LAT-40.28146°N
LONG-104.70823°W
PDOP: 1.1
ELEV: 4813'

⑬

SCHMIDT G30-33
SW1/4SW1/4
1198' FSL
181' FWL
LAT-40.27950°N
LONG-104.71487°W
PDOP: 1.6
ELEV: 4815'

⑰

ELMER W SCHMIDT UNIT 2
SW1/4SW1/4
1129' FSL
1308' FWL
LAT-40.27931°N
LONG-104.71083°W
PDOP: 1.6
ELEV: 4811'

⑱

SCHMIDT 30-13G
SW1/4SW1/4
584' FSL
666' FWL
LAT-40.27782°N
LONG-104.71313°W
PDOP: 4.3
ELEV: 4822'

⑲

SCHMIDT G30-25
NW1/4SW1/4
1391' FSL
1243' FWL
LAT-40.28003°N
LONG-104.71107°W
PDOP: 2.5
ELEV: 4809'

⑳

SCHMIDT 30-14G
SE1/4SW1/4
511' FSL
1992' FWL
LAT-40.27761°N
LONG-104.70838°W
PDOP: 2.3
ELEV: 4818'

㉑

OSTER-MOLANDER 1
NW1/4SE1/4
1640' FSL
1686' FEL
LAT-40.28069°N
LONG-104.70265°W
PDOP: 1.1
ELEV: 4835'

㉓

OSTER G30-24
SW1/4SE1/4
1282' FSL
2602' FEL
LAT-40.27966°N
LONG-104.70593°W
PDOP: 1.2
ELEV: 4835'

㉕

OSTER G30-15
SW1/4SE1/4
542' FSL
2113' FEL
LAT-40.27768°N
LONG-104.70418°W
PDOP: 1.0
ELEV: 4858'

㉗

OSTER G30-16X
SE1/4SE1/4
799' FSL
800' FEL
LAT-40.27838°N
LONG-104.69947°W
PDOP: 1.8
ELEV: 4875'

㉙

OSTER G30-23
NE1/4SE1/4
1480' FSL
1292' FEL
LAT-40.28025°N
LONG-104.70124°W
PDOP: 1.9
ELEV: 4841'

