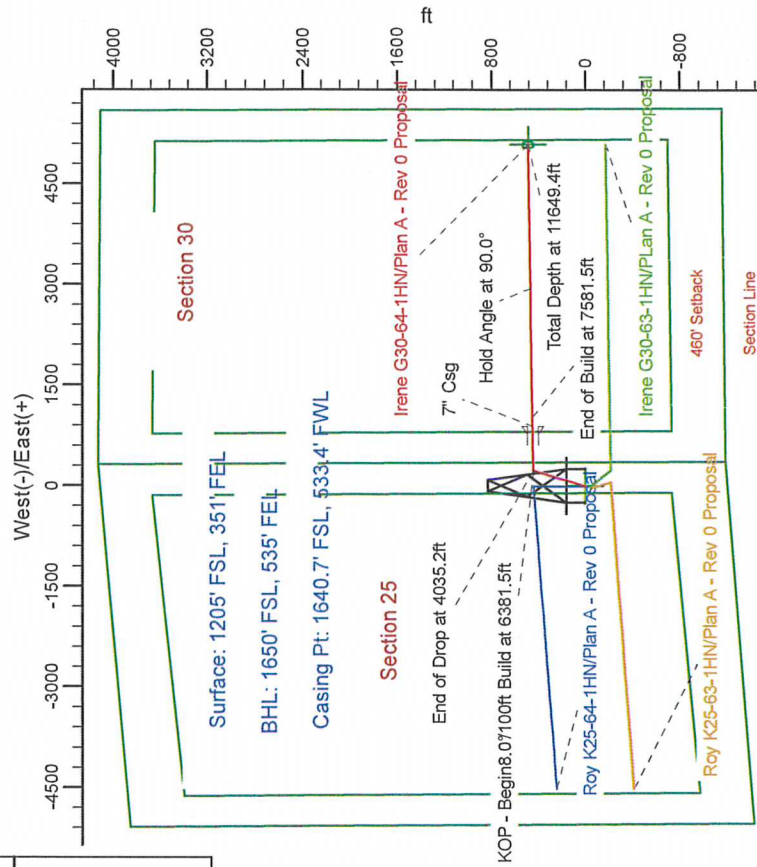
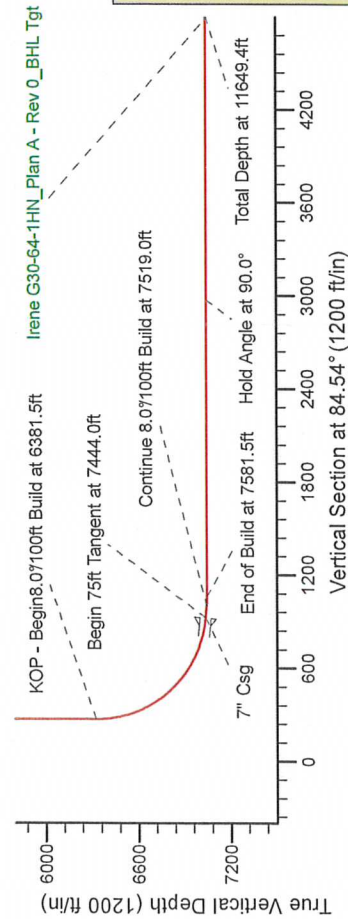
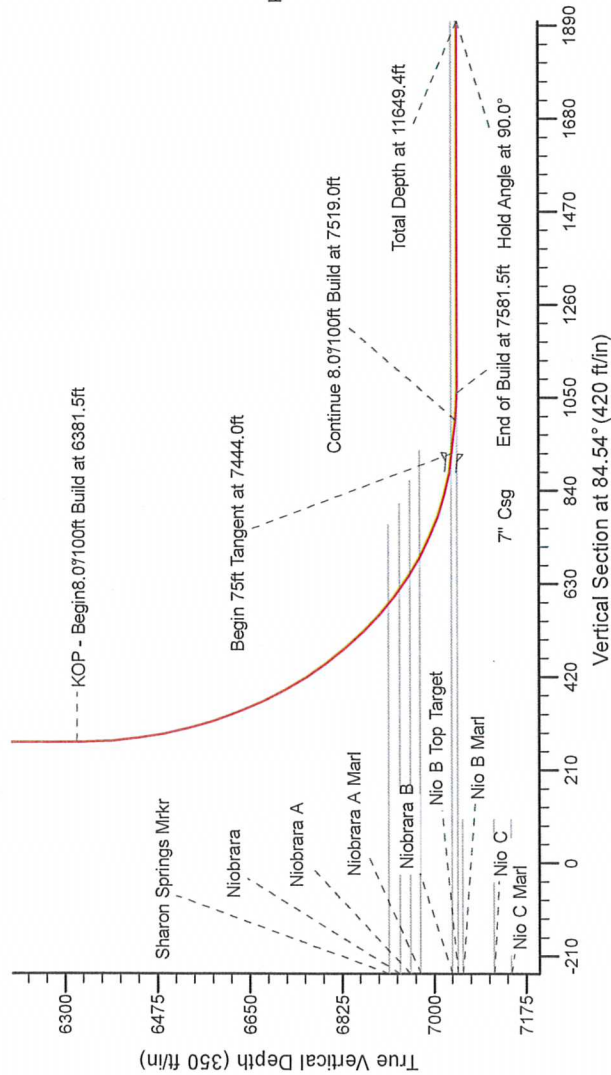


**HALLIBURTON**  
Sperry Drilling

Project: Weld County Colorado (NAD 83)  
Site: Sec. 25, T4N, R66W  
Well: Irene G30-64-1HN  
Wellbore: Plan A - Rev 0 (PERMITTING PLAN ONLY)  
Design: Plan A - Rev 0 Proposal

## SECTION DETAILS

Sec	MD	Inc	Azi	TVD	+N/-S	+E/-W	Dleg	TFace	VSect	Target
1	0.0	0.00	0.00	0.00	0.0	0.0	0.00	0.00	0.0	
2	1500.0	0.00	0.00	1500.0	0.0	0.0	0.00	0.00	0.0	
3	2100.2	15.00	27.54	2093.3	69.3	36.1	2.50	27.54	42.5	
4	3435.0	15.00	27.54	3382.7	375.7	195.9	0.00	0.00	230.7	
5	4035.2	0.00	0.00	3976.0	445.0	232.0	2.50	180.00	273.3	
6	6381.5	0.00	0.00	6322.3	445.0	232.0	0.00	0.00	273.3	
7	7444.0	85.00	89.51	7035.8	450.6	895.8	8.00	89.51	924.6	
8	7519.0	85.00	89.51	7042.3	451.2	960.5	0.00	0.00	995.0	
9	7581.5	90.00	89.51	7045.1	451.8	1022.9	8.00	0.00	1061.2	
10	11649.4	90.00	89.52	7045.0	486.3	5090.7	0.00	77.12	513.9	



WELL DETAILS: Irene G30-64-1HN(NAD83 Geodetic System)

Ground Level:	4801.0	
Easting	Latitude	Longitude
981006.79	40°16' 46.200 N	104°43' 0.498 W
410148.30		

Plan: Plan A - Rev 0 Proposal (Irene G30-64-1HN/Plan A - Rev 0 (PERMITTING PLAN ONLY))

Created By: Erasmo Mendoza Date: 19:43, October 19 2011

Metric Model: KGRF200510  
 Date: 10/19/2011  
 Inclination: 8.23°  
 Dip Angle: 66.96°  
 Field Strength: 53060.1



Grid North is  $0.51^\circ$  East of True North (Grid Convergence).  
Magnetic North is  $8.74^\circ$  East of True North (Magnetic Declination).  
Magnetic North is  $8.23^\circ$  East of Grid North (Magnetic Convergence).  
To convert a True Direction to a Grid Direction, Subtract  $0.51^\circ$ .  
To convert a Magnetic Direction to a True Direction, Add  $8.74^\circ$ .  
To convert a Magnetic Direction to a Grid Direction, Add  $8.23^\circ$ .