
XTO ENERGY INC EBUSINESS

Pargin 2-36

La Plata County , Colorado

Cement Surface Casing

24-Oct-2011

Job Site Documents

The Road to Excellence Starts with Safety

Sold To #: 353810	Ship To #: 353810	Quote #:	Sales Order #: 9007278
Customer: XTO ENERGY INC EBUSINESS	Customer Rep:		
Well Name: Pargin	Well #: 2-36	API/UWI #:	
Field:	City (SAP): FORT WORTH	County/Parish: La Plata	State: Colorado
Contractor: AZTEC WELL SERVICE	Rig/Platform Name/Num: AWS 580		
Job Purpose: Cement Surface Casing			
Well Type: Producing Well	Job Type: Cement Surface Casing		
Sales Person: SNYDER, RANDALL	Srv Supervisor: DOBBS, GARY	MBU ID Emp #:	122012

Job Personnel

HES Emp Name	Exp Hrs	Emp #	HES Emp Name	Exp Hrs	Emp #	HES Emp Name	Exp Hrs	Emp #
DOBBS, GARY D	5.5	122012	FABREY, KENDALL Edward	5.5	488836	MILLER, DAVID A	5.5	484499

Equipment

HES Unit #	Distance-1 way	HES Unit #	Distance-1 way	HES Unit #	Distance-1 way	HES Unit #	Distance-1 way

Job Hours

Date	On Location Hours	Operating Hours	Date	On Location Hours	Operating Hours	Date	On Location Hours	Operating Hours
10/23/11	3.5	1	10/24/11	2	2			

TOTAL Total is the sum of each column separately

Job

Formation Name	Top	Bottom	Called Out	Date	Time	Time Zone
Formation Depth (MD)			On Location	23 - Oct - 2011	17:00	MST
Form Type	BHST		Job Started	23 - Oct - 2011	20:30	MST
Job depth MD	475. ft	Job Depth TVD	Job Completed	24 - Oct - 2011	00:17	MST
Water Depth		Wk Ht Above Floor	Job Completed	24 - Oct - 2011	00:58	MST
Perforation Depth (MD)	From	To	Departed Loc	24 - Oct - 2011	02:00	MST

Well Data

Description	New / Used	Max pressure psig	Size in	ID in	Weight lbm/ft	Thread	Grade	Top MD ft	Bottom MD ft	Top TVD ft	Bottom TVD ft
12-1/4" Open Hole				12.25				.	469.	.	469.
8-5/8" Surface Casing	New		8.625	8.097	24.		J-55	.	469.	.	469.

Sales/Rental/3rd Party (HES)

Description	Qty	Qty uom	Depth	Supplier
SUGAR, GRANULATED, IMPERIAL	150	LB		
PLUG,CMTG,TOP,8 5/8,HWE,7.20 MIN/8.09 MA	1	EA		

Tools and Accessories

Type	Size	Qty	Make	Depth	Type	Size	Qty	Make	Depth	Type	Size	Qty	Make
Guide Shoe					Packer					Top Plug			
Float Shoe					Bridge Plug					Bottom Plug			
Float Collar					Retainer					SSR plug set			
Insert Float										Plug Container			
Stage Tool										Centralizers			

Miscellaneous Materials

Gelling Agt	Conc	Surfactant	Conc	Acid Type	Qty	Conc	%
Treatment Fld	Conc	Inhibitor	Conc	Sand Type	Size	Qty	

Fluid Data

Stage/Plug #: 1	Fluid #	Stage Type	Fluid Name	Qty	Qty uom	Mixing Density lbm/gal	Yield ft ³ /sk	Mix Fluid Gal/sk	Rate bbl/min	Total Mix Fluid Gal/sk
-----------------	---------	------------	------------	-----	---------	------------------------	---------------------------	------------------	--------------	------------------------

1	Fresh Water		10.00	bbl	8.33	.0	.0	.0	
2	Surface Cement	CMT - PREMIUM - CLASS G, 94 LB SK (100003685)	340.0	sacks	15.8	1.17	5.0		5.0
	94 lbm	CMT - PREMIUM - CLASS G REG OR TYPE V, BULK (100003685)							
	0.125 lbm	POLY-E-FLAKE (101216940)							
	2 %	CALCIUM CHLORIDE - HI TEST PELLET (100005053)							
	4.998 Gal	FRESH WATER							
3	Displacement		27.00	bbl	8.33	.0	.0	.0	
Calculated Values		Pressures		Volumes					
Displacement	26.6	Shut In: Instant	200	Lost Returns		Cement Slurry	71	Pad	
Top Of Cement	0	5 Min		Cement Returns	30	Actual Displacement	27	Treatment	
Frac Gradient		15 Min		Spacers	10	Load and Breakdown		Total Job	
Rates									
Circulating	3	Mixing	4	Displacement	4	Avg. Job	4		
Cement Left In Pipe	Amount	45ft	Reason	Shoe Joint					
Frac Ring # 1 @	ID	Frac ring # 2 @	ID	Frac Ring # 3 @	ID	Frac Ring # 4 @	ID		
The Information Stated Herein Is Correct				Customer Representative Signature					

The Road to Excellence Starts with Safety

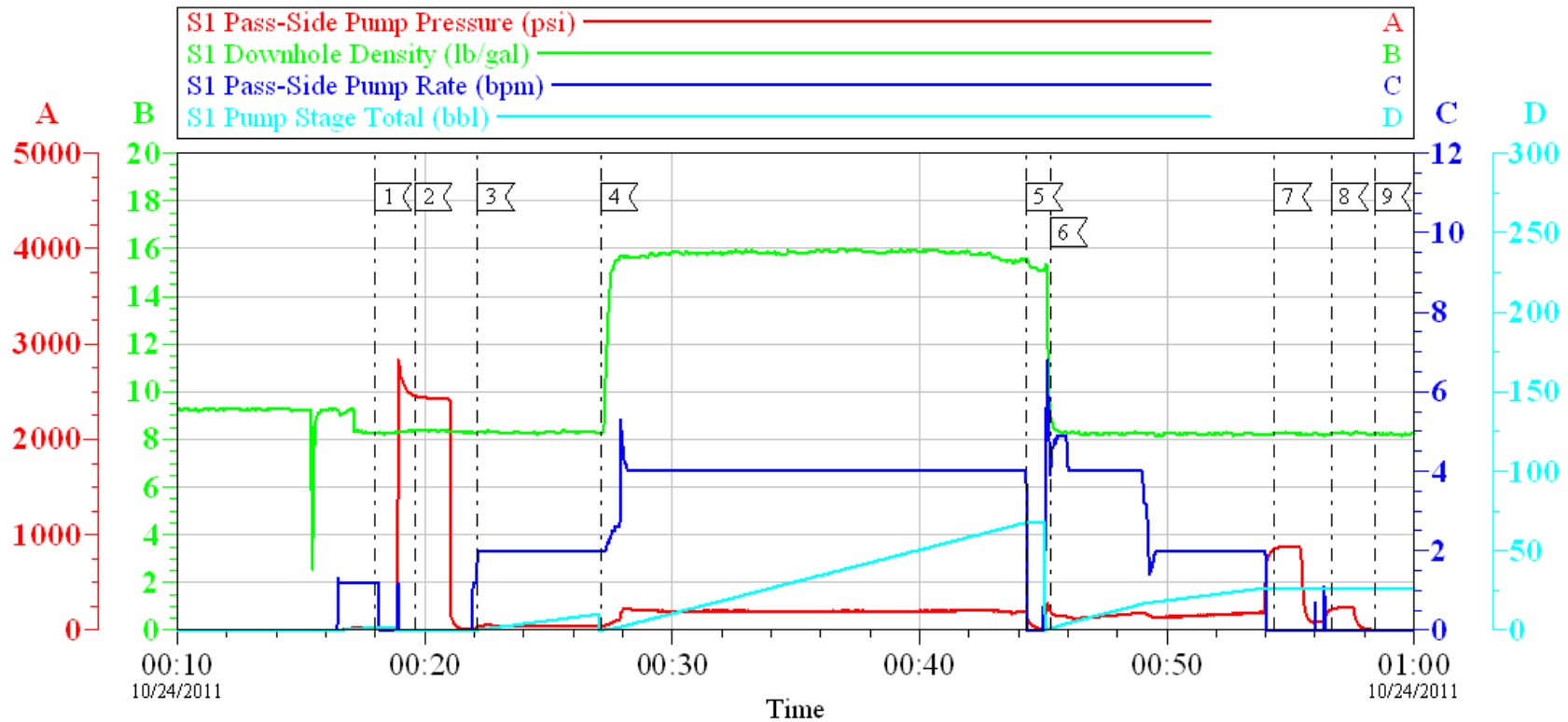
Sold To #: 353810	Ship To #: 353810	Quote #:	Sales Order #: 9007278
Customer: XTO ENERGY INC EBUSINESS		Customer Rep:	
Well Name: Pargin		Well #: 2-36	API/UWI #:
Field:	City (SAP): FORT WORTH	County/Parish: La Plata	State: Colorado
Legal Description:			
Lat:		Long:	
Contractor: AZTEC WELL SERVICE		Rig/Platform Name/Num: AWS 580	
Job Purpose: Cement Surface Casing			Ticket Amount:
Well Type: Producing Well		Job Type: Cement Surface Casing	
Sales Person: SNYDER, RANDALL		Srv Supervisor: DOBBS, GARY	MBU ID Emp #: 122012

Activity Description	Date/Time	Cht #	Rate bbl/min	Volume bbl		Pressure psig		Comments
				Stage	Total	Tubing	Casing	
Pre-Convoy Safety Meeting	10/23/2011 18:39							ALL HES EMPLOYEES
Arrive at Location from Service Center	10/23/2011 20:30							
Assessment Of Location Safety Meeting	10/23/2011 20:35							ALL HES EMPLOYEES
Wait on Customer or Customer Sub-Contractor Equip	10/23/2011 20:45							WAIT ON RIG CREW TO RUN CASING
Wait on Customer or Customer Sub-Contractor Equipm	10/23/2011 22:45							CASING ON BOTTOM
Pre-Rig Up Safety Meeting	10/23/2011 22:50							ALL HES EMPLOYEES
Rig-Up Equipment	10/23/2011 23:00							RIG UP AND WAIT ON WATER TRUCKS TO TOP OFF RIG TANK
Pre-Job Safety Meeting	10/24/2011 00:01							EVERYONE OL LOCATION
Start Job	10/24/2011 00:17							
Test Lines	10/24/2011 00:19					2500.0		
Pump Spacer 1	10/24/2011 00:22		3	10			29.0	FRESH WATER
Pump Tail Cement	10/24/2011 00:27		4	70.8			51.0	MIX AND PUMP 340 SKS OF TYPE G MIXED @ 15.8#, 1.17 YEILD, 5.0 GPS FRESH WATER
Drop Top Plug	10/24/2011 00:44							
Pump Displacement	10/24/2011 00:45		4	16			212.0	FRESH WATER

Cementing Job Log

Activity Description	Date/Time	Cht #	Rate bbl/ min	Volume bbl		Pressure psig		Comments
				Stage	Total	Tubing	Casing	
Bump Plug	10/24/2011 00:54		2	10.7	26.7		851.0	FRESH WATER
Shut In Well	10/24/2011 00:56					200.0		SHUT IN WELL
Cement Returns to Surface	10/24/2011 00:56							CIRCULATED 30 BBLS OF CEMENT TO PIT
End Job	10/24/2011 00:58							

XTO
PARGIN #2-36 / 8 5/8" SURFACE



Local Event Log						
Intersection		SPPP		Intersection		SPPP
1	START JOB	00:17:59	23.00	2	TEST LINES	00:19:37 2456
3	PUMP SPACER 1	00:22:08	29.11	4	PUMP CEMENT	00:27:07 51.72
5	DROP PLUG	00:44:18	191.1	6	PUMP DISPLACEMENT	00:45:17 212.3
7	BUMP PLUG	00:54:22	851.6	8	CHECK FLOATS	00:56:39 216.0
9	END JOB	00:58:24	4.894			

Customer: XTO	Job Date: 23-Oct-2011	Sales Order #: 9007278
Well Description: PARGIN #2-36	Job Type: SURFACE	ADC Used: YES
Customer Rep: MARK NIETZEL	Service Supervisor: DONNY DOBBS	Operator/Pump: DAVE MILLER / 11324578

OptiCern v6.4.9
24-Oct-11 01:06