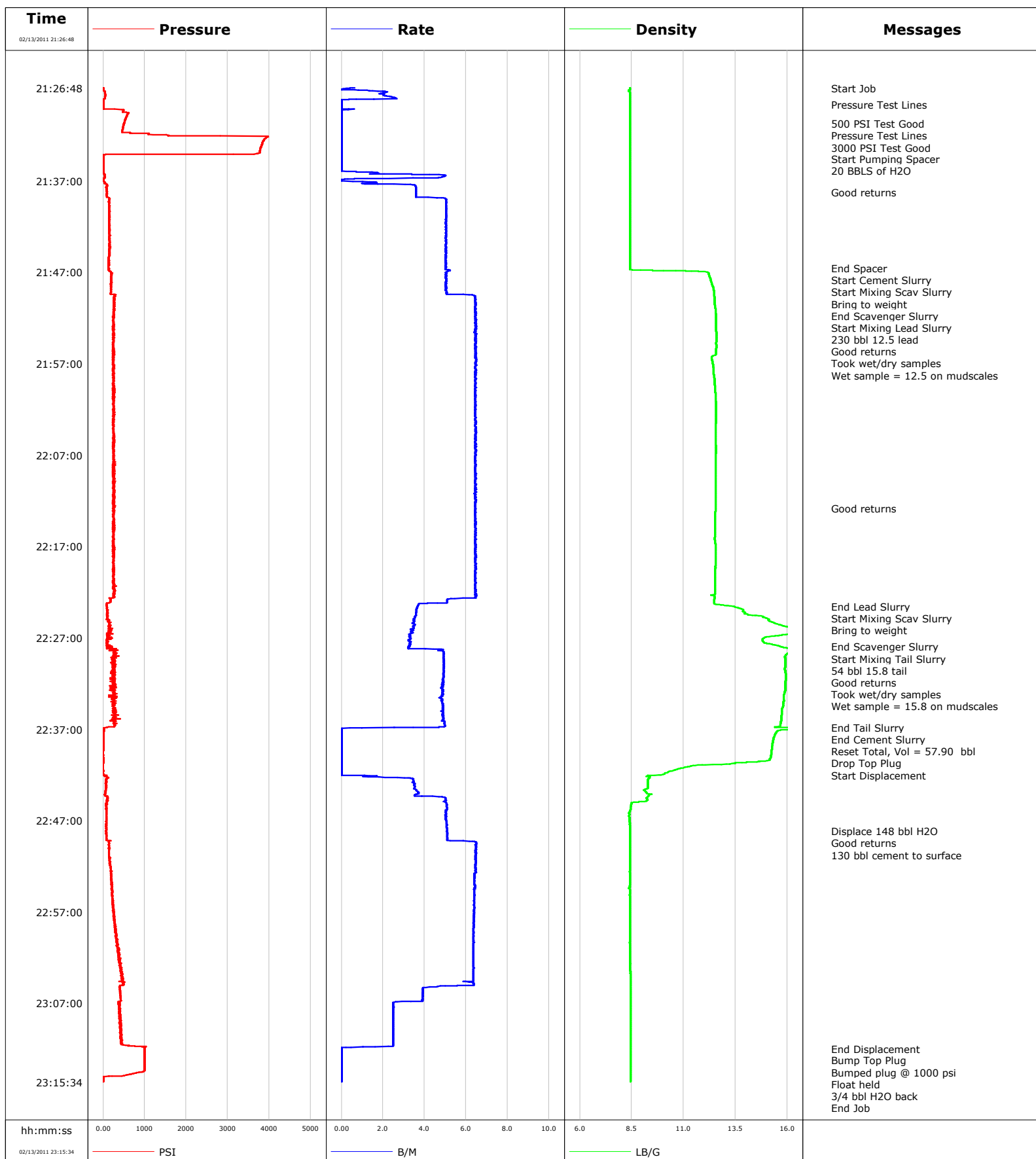


Well Keinath
Field Orchard
Engineer Matt Fair
Country United States

Client Encana
SIR No. BJ90-00276
Job Type 10 3/4 Surface
Job Date 02-13-2011

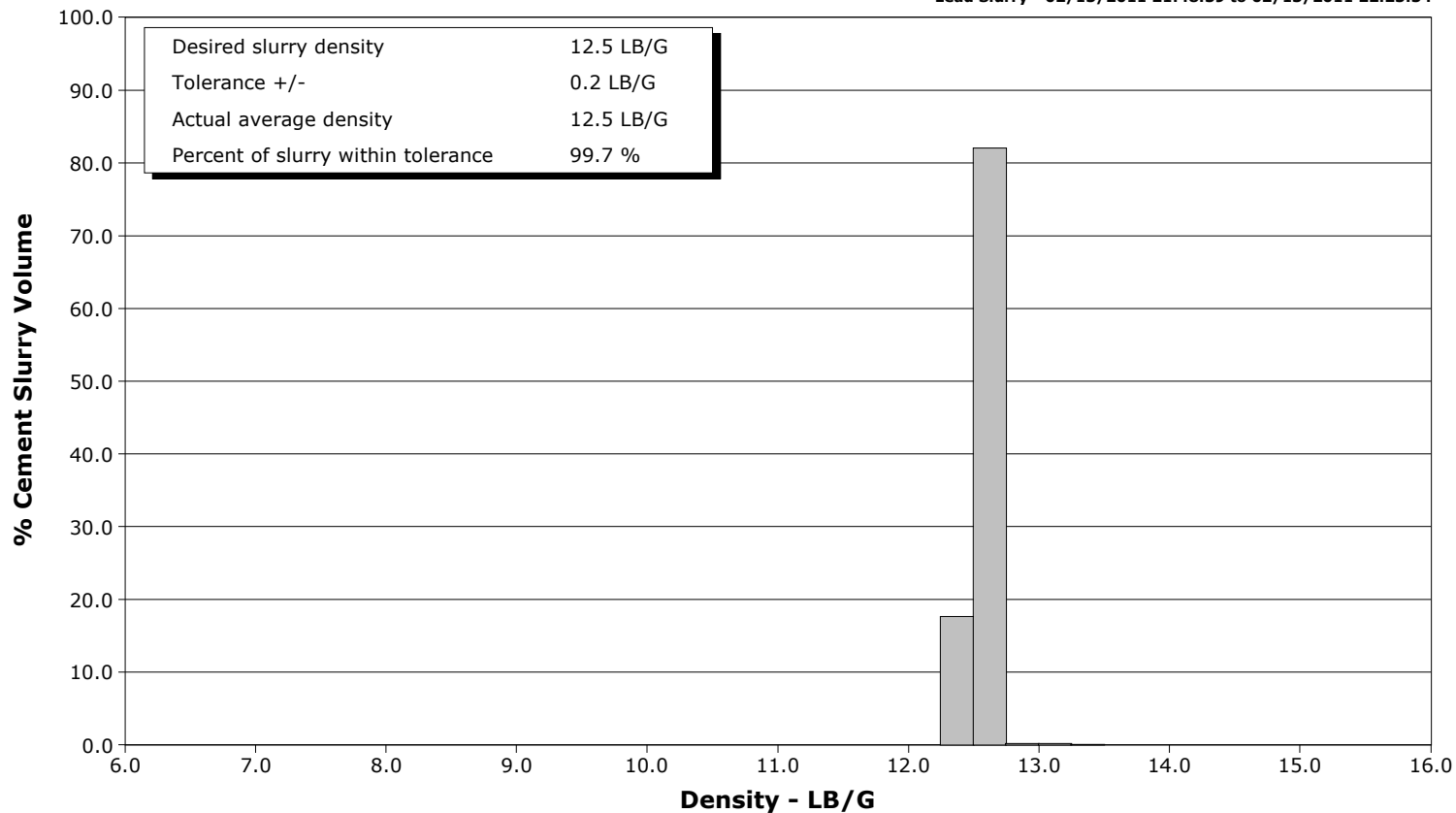


Schlumberger Cementing Qa/Qc Density Report

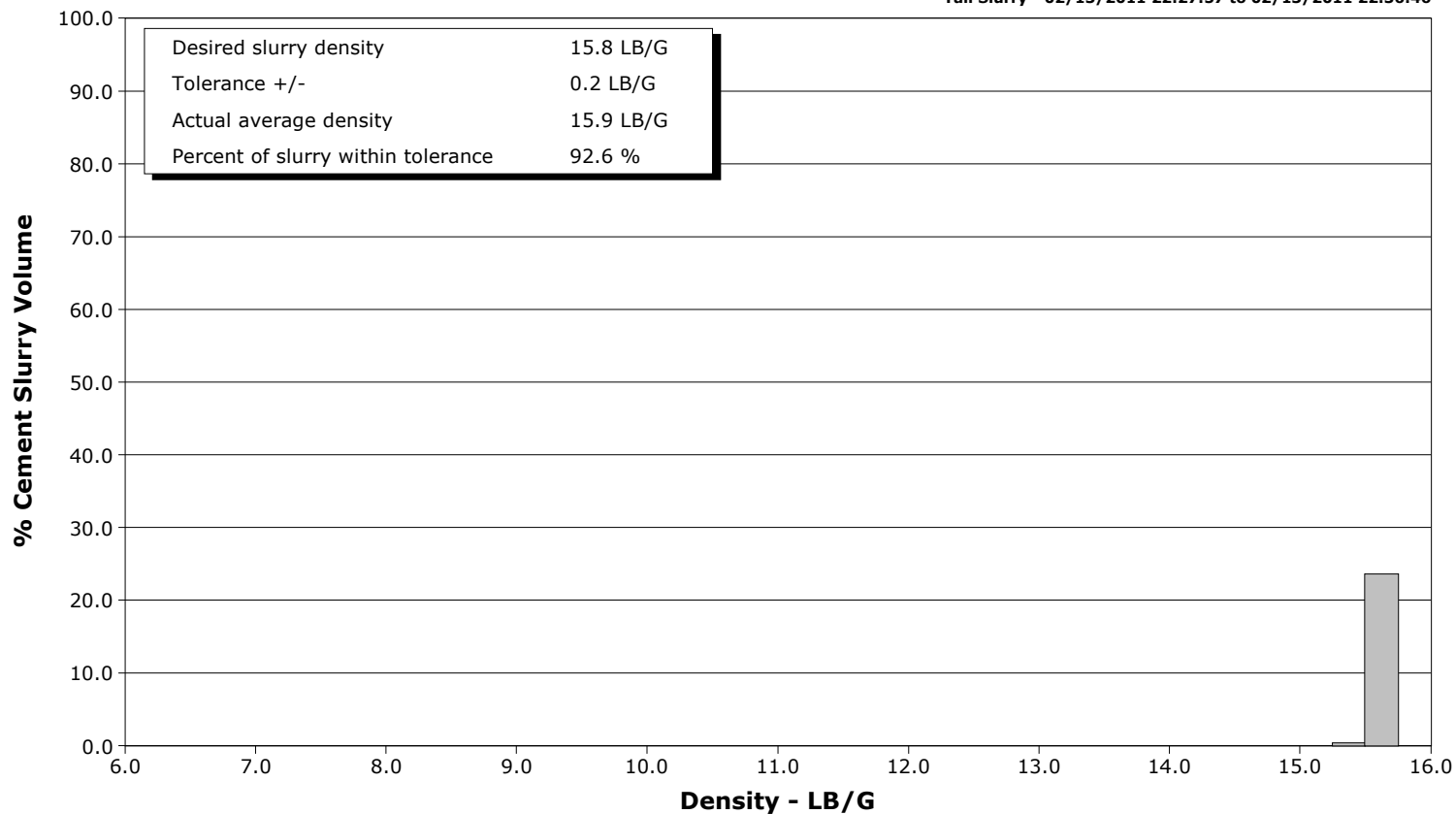
Well Keinath
Field Orchard
Engineer Matt Fair
Country United States

Client Encana
SIR No. BJ90-00276
Job Type 10 3/4 Surface
Job Date 02-13-2011

Lead Slurry - 02/13/2011 21:48:39 to 02/13/2011 22:23:34



Tail Slurry - 02/13/2011 22:27:57 to 02/13/2011 22:36:46





Cementing Service Report

				Customer Encana		Job Number BJ90-00276	
Well Keinath		Location (legal)		Schlumberger Location		Job Start Feb/13/2011	
Field Orchard		Formation Name/Type Shale		Deviation	Bit Size 14.8 in	Well MD 1547.0 ft	Well TVD 1547.0 ft
County Garfield		State/Province Colorado		BHP 0 psi	BHST 100 degF	BHCT 85 degF	Pore Press. Gradient 0.000 psi/ft
Well Master 0631245595		API/UWI					
Rig Name Nabors M11	Drilled For Gas	Service Via Land	Casing/Liner				
			Depth, ft	Size, in	Weight, lb/ft	Grade	Thread
Offshore Zone	Well Class New	Well Type Exploration	40.0	20.000	94.0	N/A	N/A
			1547.0	10.750	40.5	J55	8RD
Drilling Fluid Type Bentonite		Max. Density 9.50 lb/gal	Plastic Viscosity	Tubing/Drill Pipe			
				Depth,	Size,	Weight,	Grade
Service Line Cementing	Job Type 10 3/4 Surface						
Max. Allowed Tub. Press 3130 psi	Max. Allowed Ann. Press 1590 psi	WH Connection 10 3/4	Perforations/Open Hole				
			Top,	Bottom,		No. of Shots	Total Interval
							Diameter
			Treat Down Casing	Displacement 148.0 bbl	Packer Type	Packer Depth	
			Tubing Vol.	Casing Vol. 152.0 bbl	Annular Vol. 159.0 bbl	Openhole Vol. 317.0 bbl	
Casing/Tubing Secured <input checked="" type="checkbox"/>		1 Hole Vol. Circulated prior to Cement <input checked="" type="checkbox"/>		Casing Tools		Squeeze Job	
Lift Pressure 690 psi				Shoe Type Float		Squeeze Type	
Pipe Rotated <input type="checkbox"/>		Pipe Reciprocated <input type="checkbox"/>		Shoe Depth 1547.0 ft		Tool Type	
No. Centralizers 5		Top Plugs 1	Bottom Plugs 0	Stage Tool Type		Tool Depth	
Cement Head Type Single				Stage Tool Depth		Tail Pipe Size	
Job Scheduled For Feb/13/2011 17:00		Arrived on Location Feb/13/2011 17:00	Leave Location Feb/13/2011 23:00	Collar Type Float		Tail Pipe Depth	
				Collar Depth 1506.0 ft		Sqz. Total Vol.	
Date	Time 24-hr clock	Treating Pressure PSI	Flow Rate B/M	Density LB/G	Volume BBL	Message	
02/13/2011	20:53:39					Started Acquisition	
02/13/2011	20:53:43					Rig up per STD 5	
02/13/2011	20:53:43					Safety meeting	
02/13/2011	21:26:48	2	0.7	8.39	0.0		
02/13/2011	21:26:53					Start Job	
02/13/2011	21:26:53	4	0.3	8.42	0.1		
02/13/2011	21:26:59	5	0.0	8.42	0.1		
02/13/2011	21:28:39	10	0.0	8.42	2.2		
02/13/2011	21:28:41					Pressure Test Lines	
02/13/2011	21:28:41	10	0.0	8.42	2.2		
02/13/2011	21:30:19	532	0.0	8.42	2.2		
02/13/2011	21:30:45					500 PSI Test Good	
02/13/2011	21:30:45	503	0.0	8.42	2.2		
02/13/2011	21:31:38					Pressure Test Lines	
02/13/2011	21:31:38	457	0.0	8.42	2.2		
02/13/2011	21:31:59	1522	0.0	8.42	2.2		
02/13/2011	21:32:26					3000 PSI Test Good	
02/13/2011	21:32:26	3890	0.0	8.42	2.2		
02/13/2011	21:33:39	3777	0.0	8.42	2.2		
02/13/2011	21:34:33					Start Pumping Spacer	
02/13/2011	21:34:33	9	0.0	8.42	2.2		

Well			Field		Job Start	Customer	Job Number
Keinath			Orchard		Feb/13/2011	Encana	BJ90-00276
Date	Time 24-hr clock	Treating Pressure PSI		Flow Rate B/M	Density LB/G	Volume BBL	Message
02/13/2011	21:34:36	9		0.0	8.42	2.2	
02/13/2011	21:35:19	8		0.0	8.42	2.2	
02/13/2011	21:36:59	10		0.0	8.42	4.9	
02/13/2011	21:38:14						Good returns
02/13/2011	21:38:14	87		3.6	8.42	8.4	
02/13/2011	21:38:39	84		3.6	8.42	9.9	
02/13/2011	21:40:19	156		5.0	8.42	18.0	
02/13/2011	21:41:59	155		5.0	8.42	26.4	
02/13/2011	21:43:39	144		5.0	8.42	34.8	
02/13/2011	21:45:19	136		5.0	8.42	43.2	
02/13/2011	21:46:33						End Spacer
02/13/2011	21:46:33	146		5.0	8.42	49.4	
02/13/2011	21:46:35						Start Cement Slurry
02/13/2011	21:46:35	154		5.0	8.42	49.5	
02/13/2011	21:46:36						Start Mixing Scav Slurry
02/13/2011	21:46:36	154		5.0	8.42	49.6	
02/13/2011	21:46:39						Bring to weight
02/13/2011	21:46:39	143		5.0	8.42	49.9	
02/13/2011	21:46:59	186		5.0	12.13	51.6	
02/13/2011	21:48:39						End Scavenger Slurry
02/13/2011	21:48:39						Start Mixing Lead Slurry
02/13/2011	21:48:39						230 bbl 12.5 lead
02/13/2011	21:48:39	191		5.0	12.42	60.0	
02/13/2011	21:48:40						Good returns
02/13/2011	21:48:40	191		5.0	12.43	60.1	
02/13/2011	21:48:41						Took wet/dry samples
02/13/2011	21:48:41						Wet sample = 12.5 on mudscales
02/13/2011	21:48:41	196		5.0	12.43	60.1	
02/13/2011	21:50:19	267		6.5	12.48	69.6	
02/13/2011	21:51:59	260		6.5	12.55	80.4	
02/13/2011	21:53:39	259		6.5	12.58	91.1	
02/13/2011	21:55:19	245		6.4	12.57	101.9	
02/13/2011	21:56:59	256		6.4	12.40	112.6	
02/13/2011	21:58:39	241		6.5	12.48	123.4	
02/13/2011	22:00:19	277		6.5	12.53	134.2	
02/13/2011	22:01:59	243		6.5	12.56	144.9	
02/13/2011	22:03:39	255		6.5	12.54	155.7	
02/13/2011	22:05:19	241		6.5	12.54	166.4	
02/13/2011	22:06:59	248		6.5	12.55	177.2	
02/13/2011	22:08:39	249		6.5	12.53	187.9	
02/13/2011	22:10:19	278		6.4	12.53	198.7	
02/13/2011	22:11:59	240		6.5	12.53	209.4	
02/13/2011	22:12:47						Good returns
02/13/2011	22:12:47	248		6.4	12.53	214.6	
02/13/2011	22:13:39	238		6.4	12.52	220.2	
02/13/2011	22:15:19	241		6.5	12.52	230.9	
02/13/2011	22:16:59	238		6.4	12.53	241.7	
02/13/2011	22:18:39	266		6.4	12.53	252.4	
02/13/2011	22:20:19	248		6.5	12.52	263.2	
02/13/2011	22:21:59	256		6.5	12.51	273.9	
02/13/2011	22:23:34						End Lead Slurry
02/13/2011	22:23:34	85		3.7	13.44	282.4	
02/13/2011	22:23:36						Start Mixing Scav Slurry
02/13/2011	22:23:36	92		3.7	13.47	282.5	

Well			Field		Job Start	Customer		Job Number
Keinath			Orchard		Feb/13/2011	Encana		BJ90-00276
Date	Time 24-hr clock	Treating Pressure PSI	Flow Rate B/M	Density LB/G	Volume BBL	Message		
02/13/2011	22:23:39	84	3.6	13.53	282.7			
02/13/2011	22:25:19	198	3.5	15.33	288.7			
02/13/2011	22:26:59	105	3.3	14.90	294.3			
02/13/2011	22:27:57					End Scavenger Slurry		
02/13/2011	22:27:57					Start Mixing Tail Slurry		
02/13/2011	22:27:57	181	3.2	15.67	297.5			
02/13/2011	22:27:58					54 bbl 15.8 tail		
02/13/2011	22:27:58	179	3.3	15.69	297.6			
02/13/2011	22:27:59					Good returns		
02/13/2011	22:27:59					Took wet/dry samples		
02/13/2011	22:27:59					Wet sample = 15.8 on mudscales		
02/13/2011	22:27:59	179	3.3	15.69	297.6			
02/13/2011	22:28:39	345	4.9	16.05	300.5			
02/13/2011	22:30:19	255	4.9	15.88	308.7			
02/13/2011	22:31:59	276	4.9	15.90	316.9			
02/13/2011	22:33:39	212	4.8	15.83	325.0			
02/13/2011	22:35:19	287	4.9	15.73	333.1			
02/13/2011	22:36:46					End Tail Slurry		
02/13/2011	22:36:46	90	4.7	15.40	340.3			
02/13/2011	22:36:47					End Cement Slurry		
02/13/2011	22:36:47	90	3.5	15.48	340.3			
02/13/2011	22:36:52					Reset Total, Vol = 57.90 bbl		
02/13/2011	22:36:52	23	0.4	18.76	340.5			
02/13/2011	22:36:54					Drop Top Plug		
02/13/2011	22:36:54	21	0.0	18.13	340.5			
02/13/2011	22:36:57					Start Displacement		
02/13/2011	22:36:57	13	0.0	17.60	340.5			
02/13/2011	22:36:59	15	0.0	17.20	340.5			
02/13/2011	22:38:39	7	0.0	15.28	340.5			
02/13/2011	22:40:19	7	0.0	15.15	340.5			
02/13/2011	22:41:59	5	0.0	9.88	340.5			
02/13/2011	22:43:39	60	3.6	9.09	345.6			
02/13/2011	22:45:19	76	5.1	8.46	353.0			
02/13/2011	22:46:59	78	5.0	8.40	361.4			
02/13/2011	22:48:07					Displace 148 bbl H2O		
02/13/2011	22:48:07	71	5.1	8.42	367.2			
02/13/2011	22:48:09					Good returns		
02/13/2011	22:48:09	80	5.1	8.42	367.4			
02/13/2011	22:48:13					130 bbl cement to surface		
02/13/2011	22:48:13	68	5.1	8.42	367.7			
02/13/2011	22:48:39	74	5.1	8.42	369.9			
02/13/2011	22:50:19	151	6.5	8.42	379.9			
02/13/2011	22:51:59	186	6.5	8.42	390.7			
02/13/2011	22:53:39	198	6.4	8.42	401.4			
02/13/2011	22:55:19	223	6.4	8.42	412.1			
02/13/2011	22:56:59	275	6.4	8.43	422.7			
02/13/2011	22:58:39	284	6.4	8.43	433.3			
02/13/2011	23:00:19	320	6.4	8.41	443.9			
02/13/2011	23:01:59	386	6.4	8.43	454.5			
02/13/2011	23:03:39	422	6.4	8.43	465.1			
02/13/2011	23:05:19	408	3.9	8.43	475.2			
02/13/2011	23:06:59	371	2.5	8.43	481.4			
02/13/2011	23:08:39	390	2.5	8.43	485.5			
02/13/2011	23:10:19	433	2.5	8.43	489.7			

Well			Field		Job Start	Customer		Job Number	
Keinath			Orchard		Feb/13/2011	Encana		BJ90-00276	
Date	Time 24-hr clock	Treating Pressure PSI	Flow Rate B/M	Density LB/G	Volume BBL	Message			
02/13/2011	23:11:53	1002	0.0	8.43	493.2				
02/13/2011	23:11:54					Bump Top Plug			
02/13/2011	23:11:54	998	0.0	8.43	493.2				
02/13/2011	23:11:56					Bumped plug @ 1000 psi			
02/13/2011	23:11:56	994	0.0	8.43	493.2				
02/13/2011	23:11:59	996	0.0	8.43	493.2				
02/13/2011	23:13:39	996	0.0	8.43	493.2				
02/13/2011	23:13:47					Float held			
02/13/2011	23:13:47	996	0.0	8.43	493.2				
02/13/2011	23:15:07					3/4 bbl H2O back			
02/13/2011	23:15:07	8	0.0	8.43	493.2				
02/13/2011	23:15:19	9	0.0	8.43	493.2				
02/13/2011	23:15:31					End Job			
02/13/2011	23:15:31	9	0.0	8.43	493.2				

Post Job Summary

Average Pump Rates,					Volume of Fluid Injected,			
Slurry	N2	Mud	Maximum Rate	Total Slurry	Mud	Spacer	N2	
Treating Pressure Summary,					Breakdown Fluid			
Maximum	Final	Average	Bump Plug to 1000	Breakdown	Type	Volume	Density	
Avg. N2 Percent	Designed Slurry Volume 284.0 bbl		Displacement	Mix Water Temp 56 degF	Cement Circulated to Surface? <input checked="" type="checkbox"/>	Volume 130.0 bbl		
					Washed Thru Perfs <input type="checkbox"/>	To		
Customer or Authorized Representative Richard Mitchell			Schlumberger Supervisor Matt Fair			Circulation Lost <input type="checkbox"/>	Job Completed <input checked="" type="checkbox"/>	
					-			



Service Order #:	
Date:	Feb/13/2011
Operating Time:	0.0
Client Rep:	Encana
Schlumberger Engineer:	Matt Fair
Schlumberger FSM:	

To be completed by Company Rep. Please answer Y (Yes) or N (No) and add any comments below.

2	Design / Preparation					
2a	Program incl. job simulation (CemCADE) & pump schedule / tool hydraulic calcs	3	yes	<input checked="" type="checkbox"/>	no	<input type="checkbox"/>
2b	Equipment maintenance schedule completed / Green tagged	2	yes	<input checked="" type="checkbox"/>	no	<input type="checkbox"/>
2c	All materials and equipment required for job/contingency checked & on location	2	yes	<input checked="" type="checkbox"/>	no	<input type="checkbox"/>
2d	Safety / pre-job meeting conducted with all involved present	2	yes	<input checked="" type="checkbox"/>	no	<input type="checkbox"/>
					Sub-total	100%

4	Evaluation					
4a	Main job objective achieved with no consequential non-productive time	10	yes	<input checked="" type="checkbox"/>	no <input type="checkbox"/>	10
Sub-total						100%

Total	100%
--------------	------

Client:	Schlumberger:
Client Signature:	Schlumberger Signature: