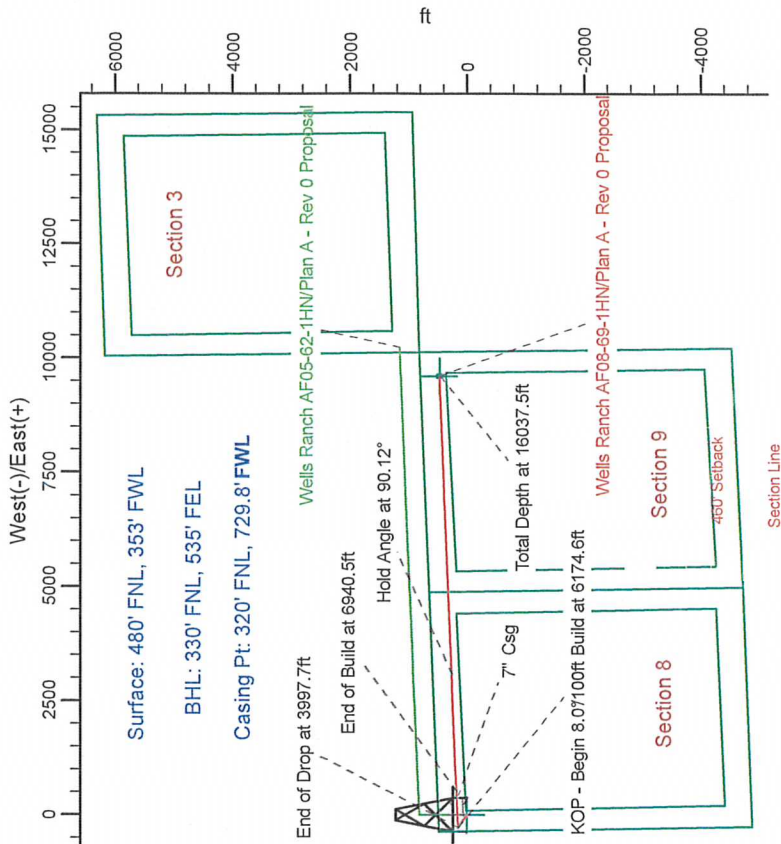
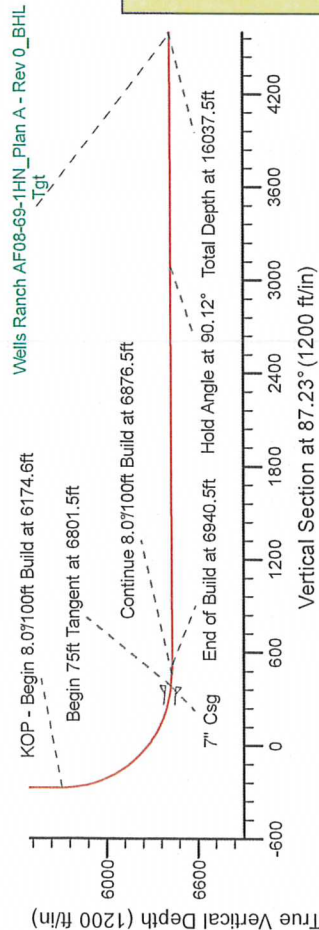
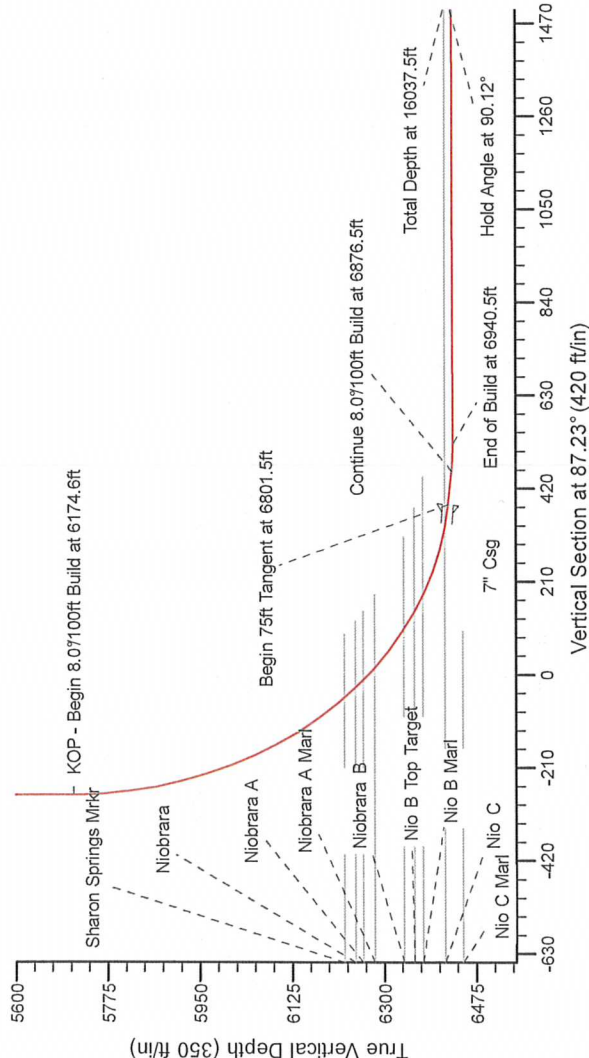


Project: Weld County Colorado (NAD 83)  
Site: Sec. 8, T5N, R62W  
Well: Wells Ranch AF08-69-1HN  
Wellbore: Plan A - Rev 0 (PERMITTING PLAN ONLY)  
Design: Plan A - Rev 0 Proposal

SECTION DETAILS

Sec	MD	Inc	Azi	TVD	+N/-S	+E/-W	Dleg	TFace	VSeal	Target
1	0.0	0.00	0.00	0.0	0.0	0.0	0.00	0.00	0.0	0.0
2	2000.0	0.00	0.00	2000.0	0.0	0.0	0.00	0.00	0.0	0.0
3	2479.9	12.00	298.35	2476.4	23.8	-44.1	2.50	298.35	-42.9	
4	3517.7	12.00	298.35	3491.6	126.2	-233.9	0.00	0.00	-227.6	
5	3997.7	0.00	0.00	3998.0	150.0	-278.0	2.50	180.00	-270.4	
6	5739.0	0.00	0.00	5709.3	150.0	-278.0	0.00	0.00	-270.4	
7	6801.5	85.00	88.18	6422.8	170.8	375.4	8.00	88.18	383.3	
8	6876.5	85.00	88.18	6429.3	173.1	450.1	0.00	0.00	458.0	
9	6940.5	90.12	88.18	6432.1	175.2	514.0	8.00	0.00	521.9	
10	16037.5	90.12	88.17	6412.9	464.7	9606.4	0.00	-77.17	9617.6	

Wells Ranch AF08-69-1HN\_Plan A - Rev 0\_BHL Tgt-



WELL DETAILS: Wells Ranch AF08-69-1HN(NAD83 Geodetic System)

Ground Level: 4664.0  
Northing: 426077.32  
Easting: 1011539.16  
Latitude: 40° 25' 11.856 N  
Longitude: 104° 21' 19.296 W

Plan: Plan A - Rev 0 Proposal (Wells Ranch AF08-69-1HN/Plan A - Rev 0 (PERMITTING PLAN ONLY))

Created By: Erasmo Mendoza Date: 12.23, November 07 2011

