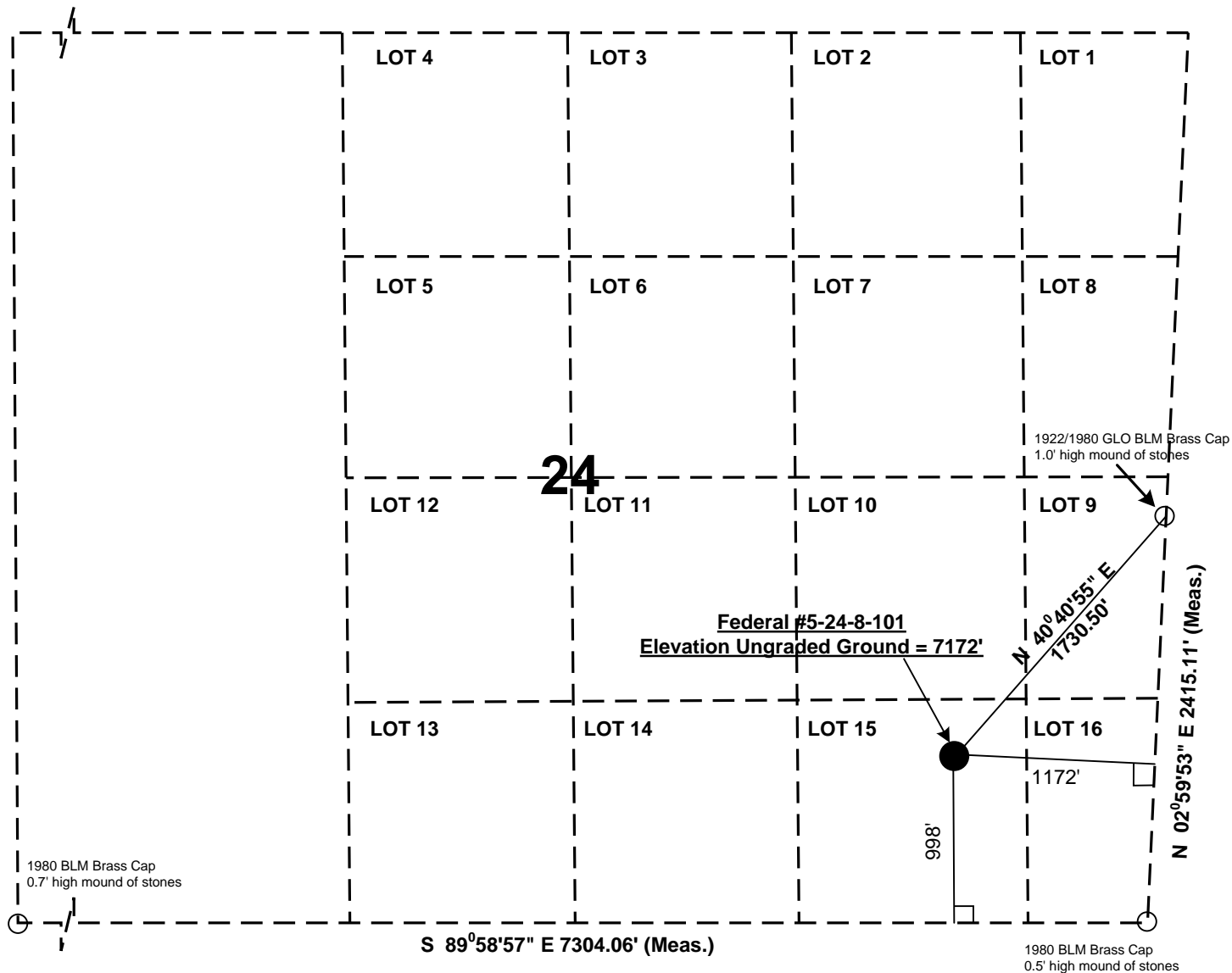
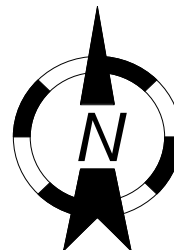


T 8 S R 101 W 6th P. M.



ELEVATIONS BASED ON NAD 83
 LATITUDE 39.34225
 LONGITUDE -108.60043

WELL LOCATION
 998' FSL 1172 FEL
 SECTION 24, T8S R101W 6th PM
 Mesa County, Colorado



LEGEND

- SECTION CORNERS LOCATED
- WELL HEAD
- └─ 90° SYMBOL

SCALE: 1" = 1,000'



Walter S. Fees, Jr. and Son O&G, LLC
FEDERAL #5-24-101
PLAT OF WELL LOCATION

DRAWN DATE 11/15/2011	Date Measured 9/4/2011
DRAWN BY: WSFIII	Instrument OPR WSFIII
SHEET 1 of 1	PDOP 1.87