



SUPERIOR
Hays,
Kansas

COMPENSATED
DENSITY/NEUTRON
PE LOG

Company MULL DRILLING COMPANY, INC.
Well STATE-SCHEIMER #1-16

Field
County CHEYENNE
State COLORADO

Company MULL DRILLING COMPANY, INC.
Well STATE-SCHEIMER #1-16
Field
County CHEYENNE State COLORADO

Location: API # : 05-017-07707-00
1457' FNL & 2494' FEL
SW/4 - NE/4
SEC 16 TWP 16S RGE 46W
Permanent Datum GROUND LEVEL Elevation 4190
Log Measured From KELLY BUSHING 11' A.G.L.
Drilling Measured From KELLY BUSHING
Other Services
DIL/MEL
SONIC
Elevation
K.B. 4201
D.F. 4199
G.L. 4190

Date 10/21/11

Run Number ONE

Depth Driller 5420

Depth Logger 5418

Bottom Logged Interval 5394

Top Log Interval 3600

Casing Driller 8 5/8" @ 520

Casing Logger

Bit Size 7 7/8

Type Fluid in Hole CHEMICAL MUD

Density / Viscosity 9.3/48

pH / Fluid Loss 9.0/8.0

Source of Sample FLOWLINE

Rim @ Meas. Temp 1.1 @ 76F

Rmf @ Meas. Temp .82 @ 76F

Rmc @ Meas. Temp 1.32 @ 76F

Source of Rmf / Rmc MEASURED

Rim @ BHT .65 @ 128F

Time Circulation Stopped 2 HOURS

Time Logger on Bottom

Maximum Recorded Temperature 128F

Equipment Number 680

Location HAYS, KS.

Recorded By JASON CAPPELLUCCI

Witnessed By PHIL ASKEY

<<< Fold Here >>>

All interpretations are opinions based on inferences from electrical or other measurements and we cannot and do not guarantee the accuracy or correctness of any interpretation, and we shall not, except in the case of gross or willful negligence on our part, be liable or responsible for any loss, costs, damages, or expenses incurred or sustained by anyone resulting from any interpretation made by any of our officers, agents or employees. These interpretations are also subject to our general terms and conditions set out in our current Price Schedule.

Comments

THANK YOU FOR USING SUPERIOR WELL SERVICE (785) 628-6395
DIRECTIONS
CHEYENNE WELLS CO. - W. TO FIRSTVIEW (RD 34) - 8 S. TO T
1/2 W. - 2 1/2 S. - 1 W. - 1/2 N - W. INTO

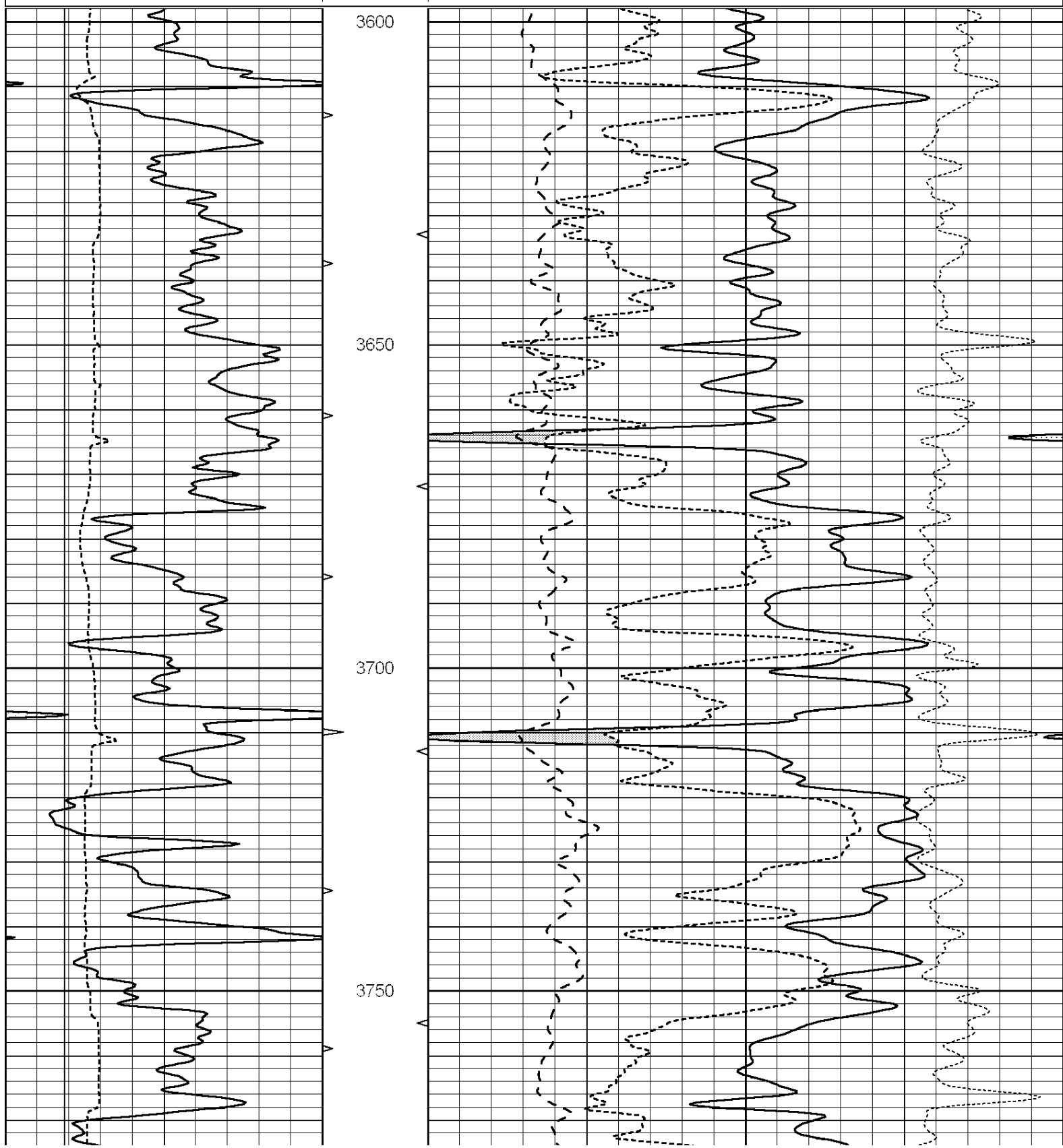


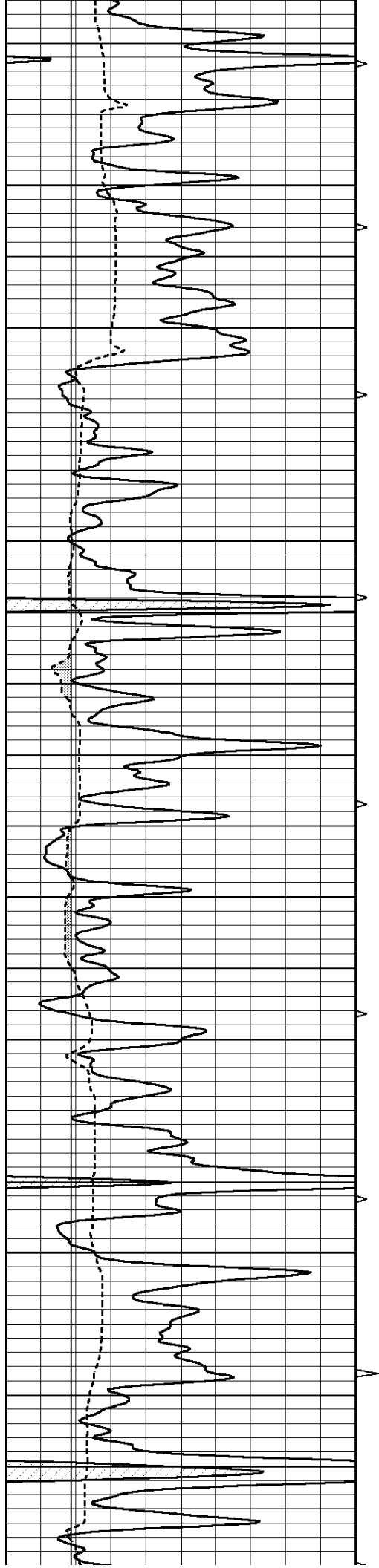
SUPERIOR
Hays,
Kansas

MAIN SECTION

Database File: 007888pe.db
 Dataset Pathname: pass3.1
 Presentation Format: _ldt_neu
 Dataset Creation: Fri Oct 21 20:19:38 2011 by Calc Open-Cased 090629
 Charted by: Depth in Feet scaled 1:240

0	GAMMA RAY (GAPI)	150	ABHV	30	COMPENSATED DENSITY (pu)				-10	
6	CALIPER (in)	16	10 (ft3)	0	30	COMPENSATED NEUTRON (pu)				-10
			TBHV	0	PE	10	-0.25	CORRECTION (g/cc)	0.25	
			0 (ft3)	10						



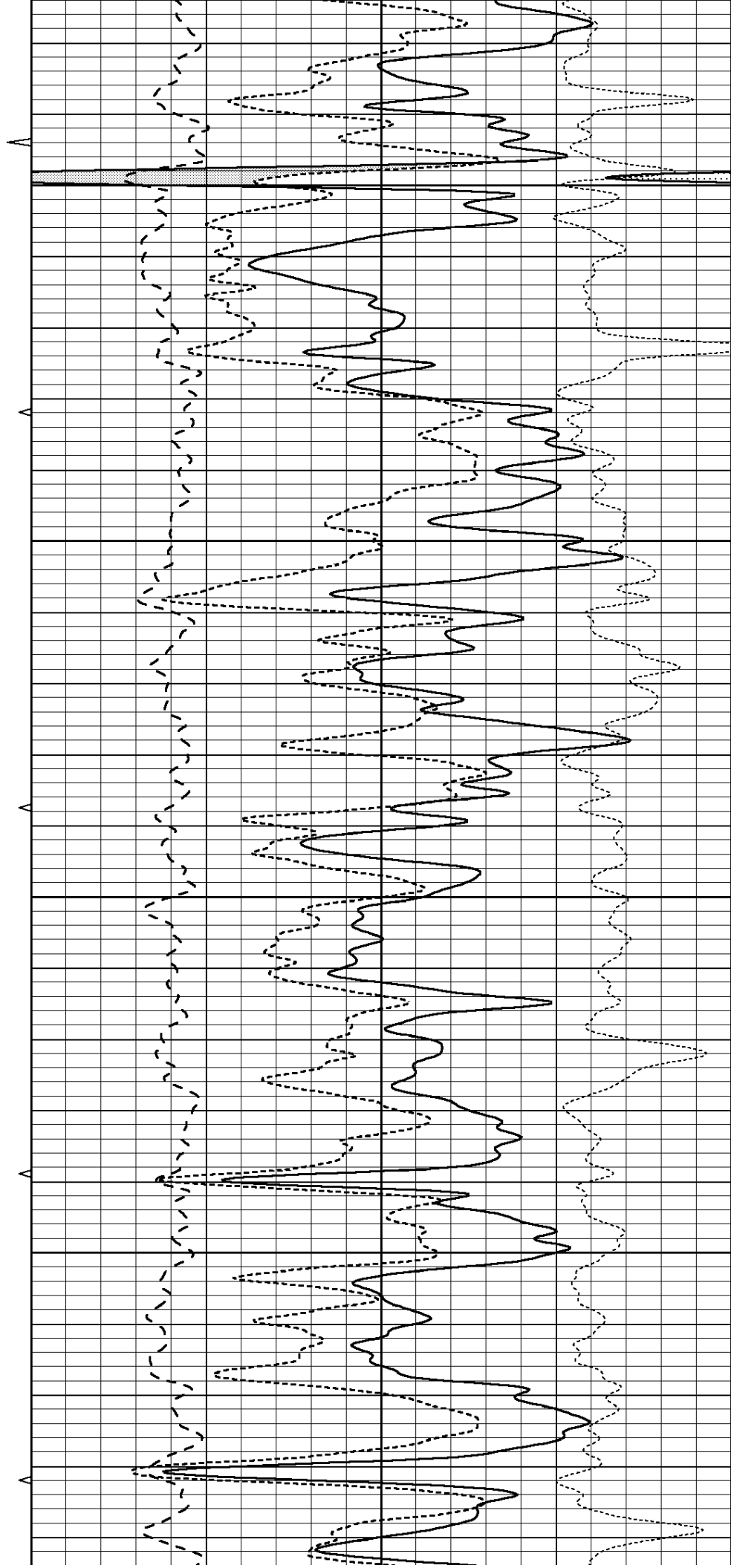


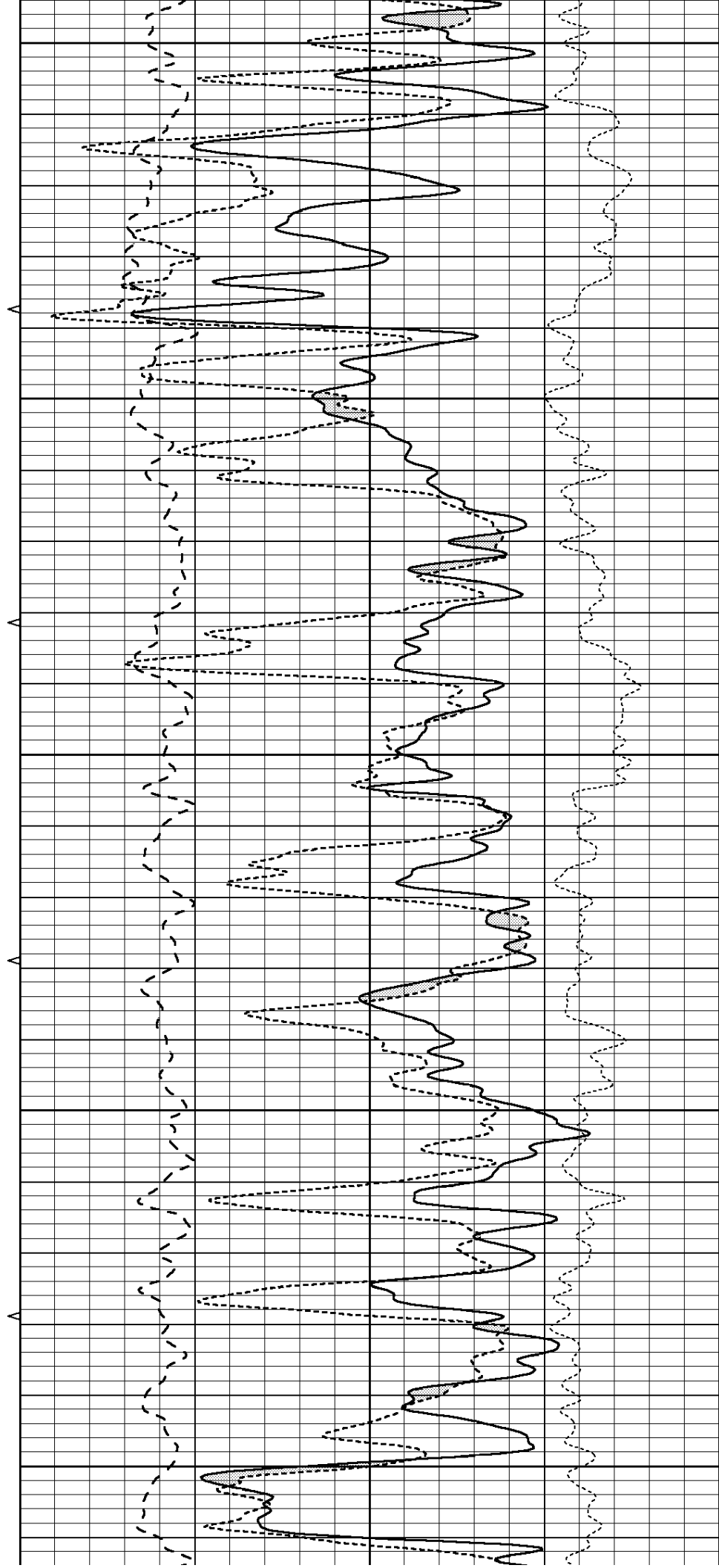
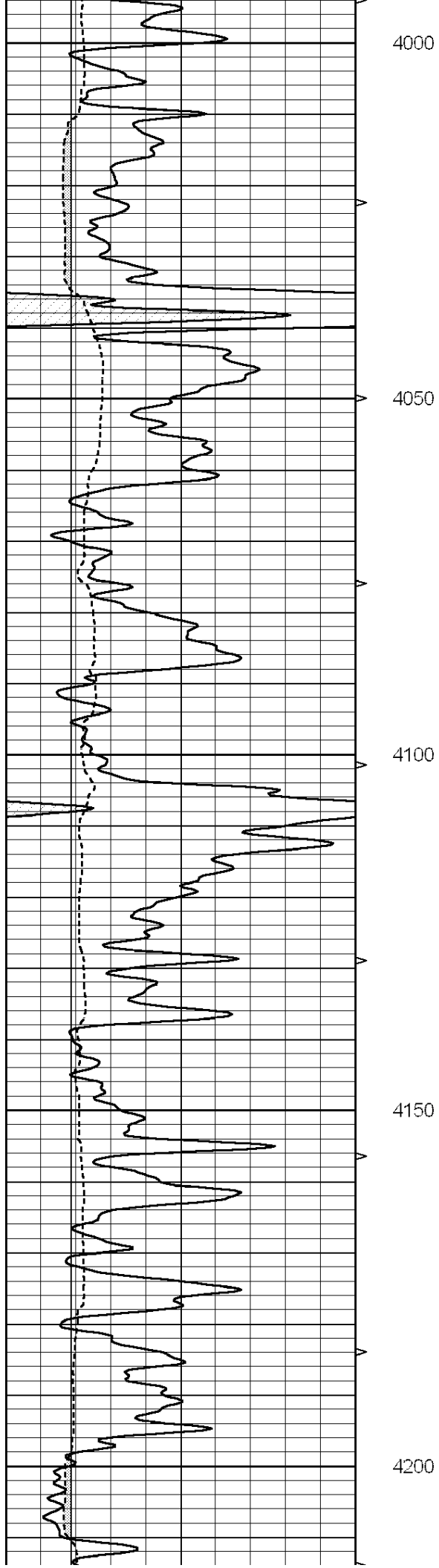
3800

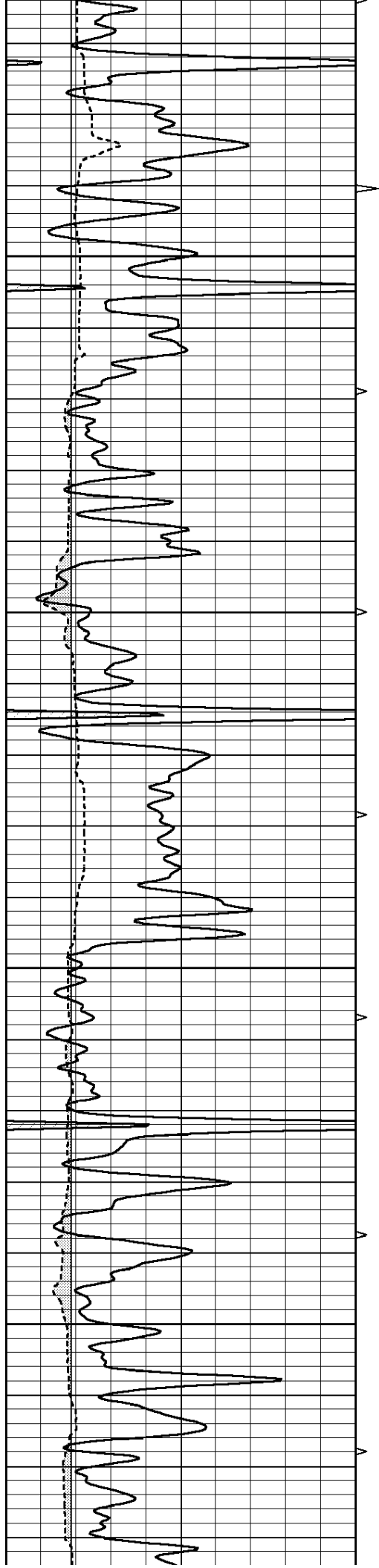
3850

3900

3950





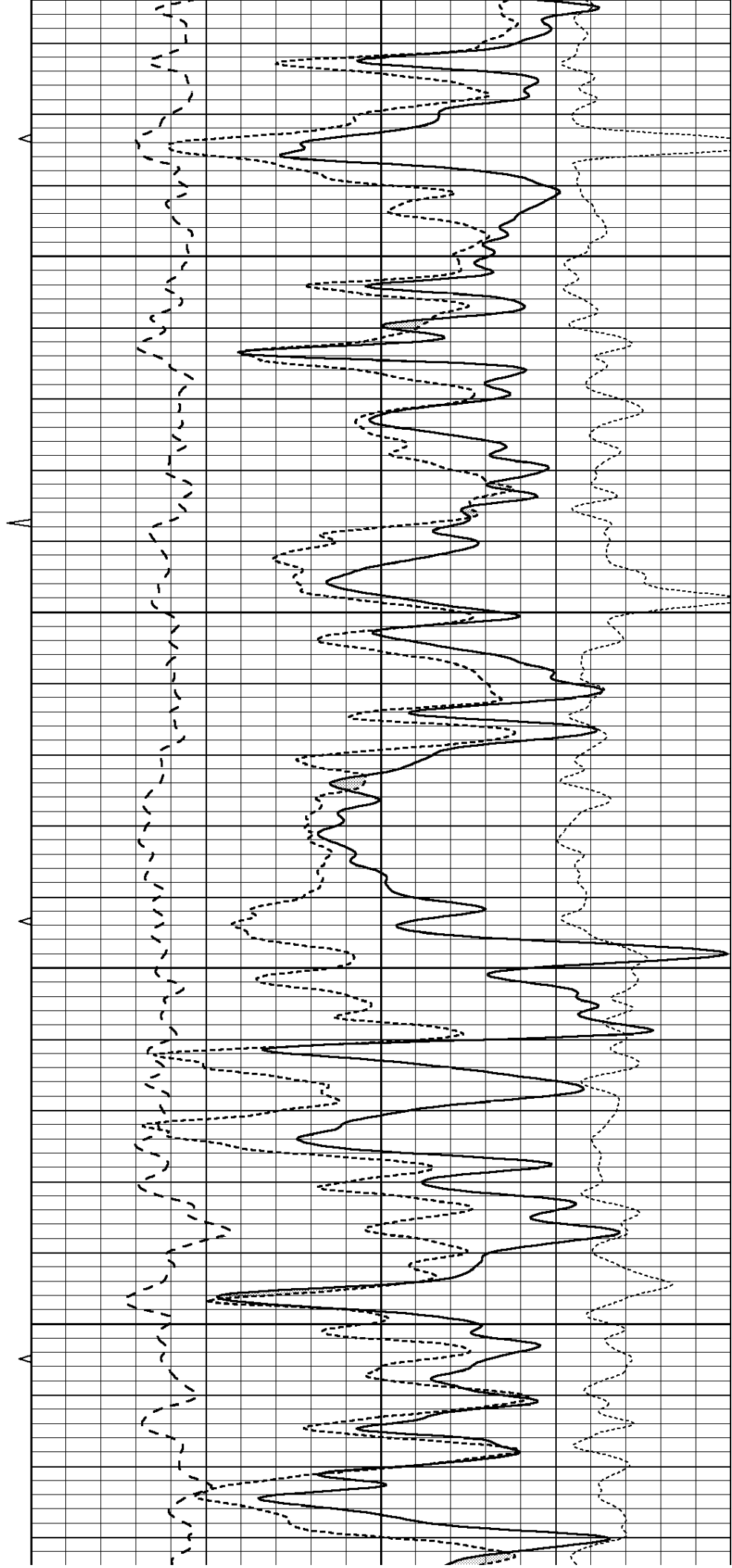


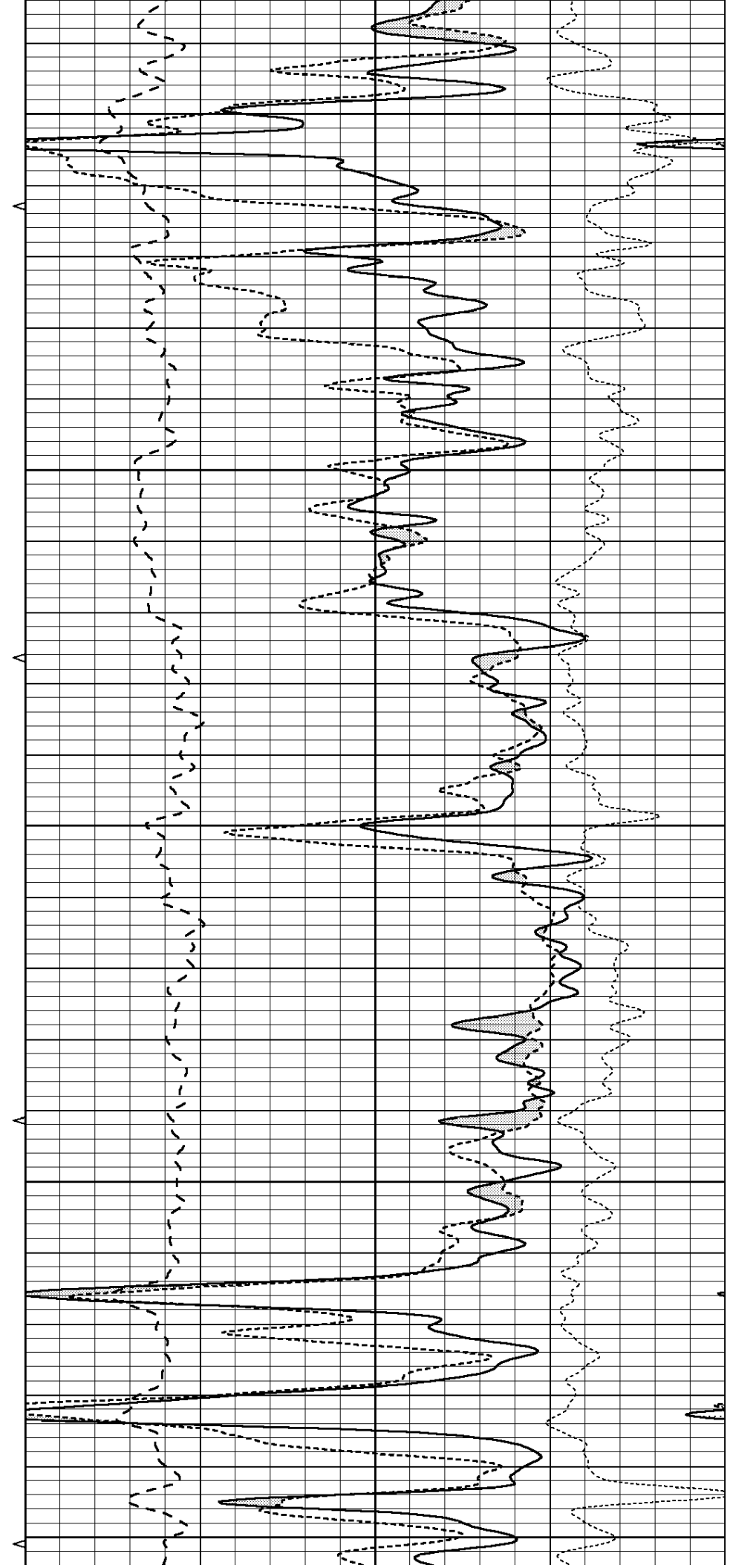
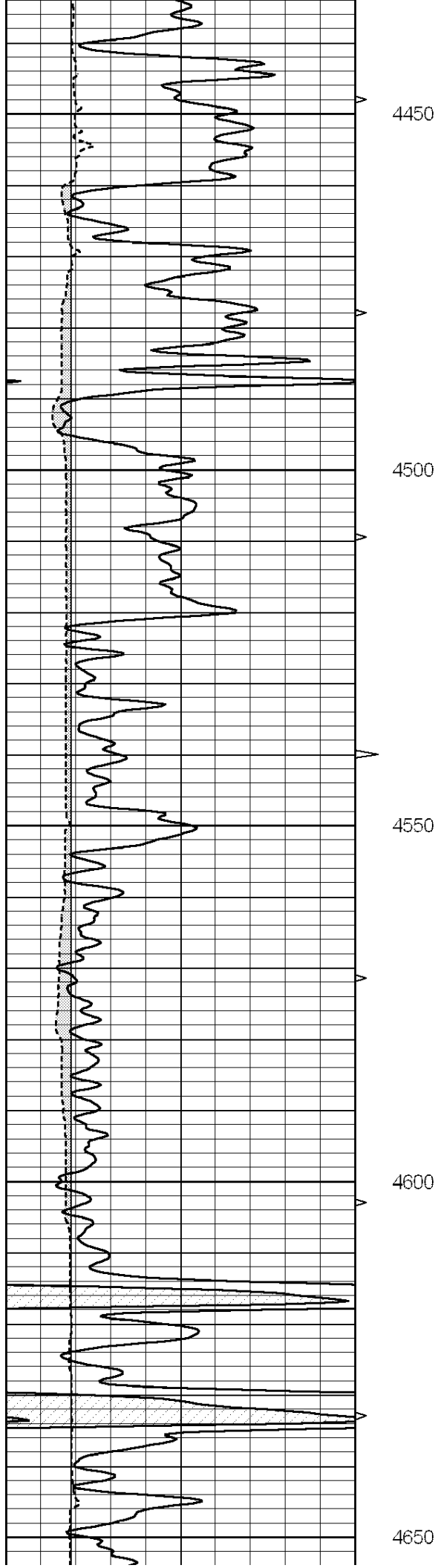
4250

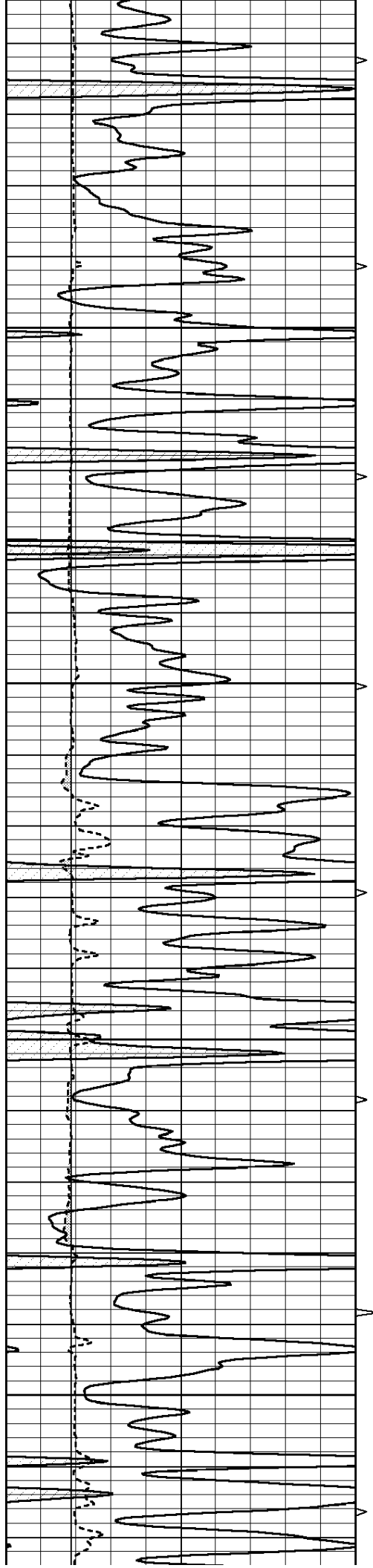
4300

4350

4400





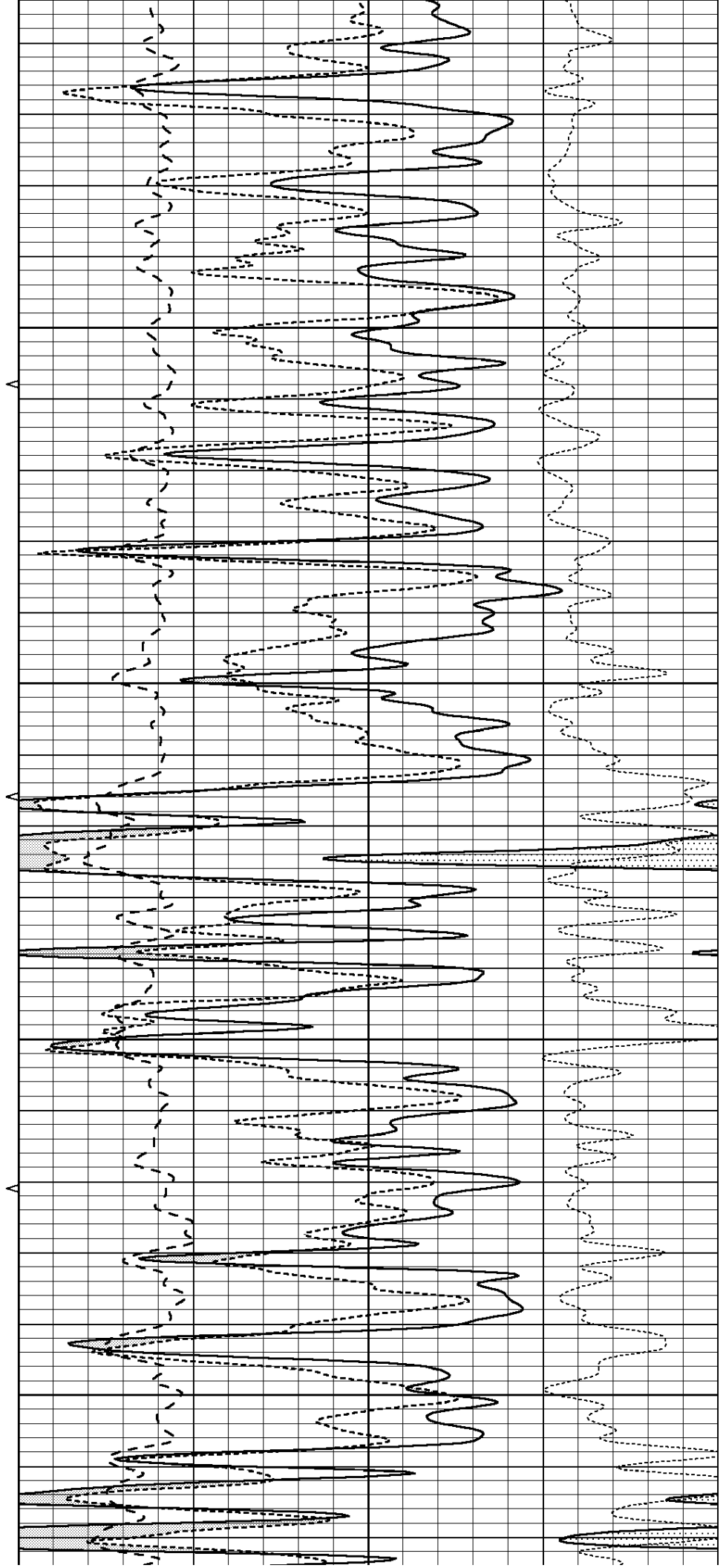


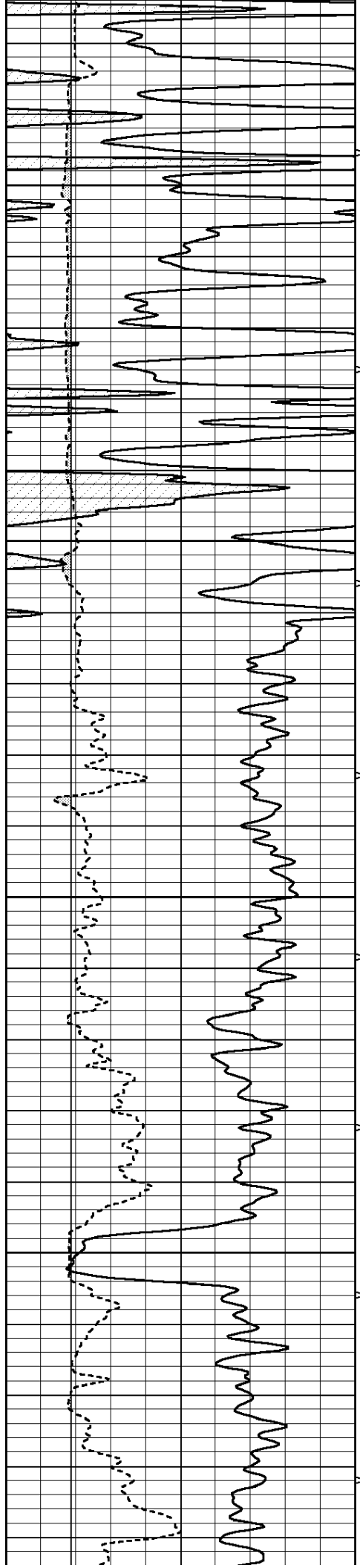
4700

4750

4800

4850





4900

4950

5000

5050

