



SUPERIOR
Hays,
Kansas

MICRO LOG

Company	MULL DRILLING COMPANY, INC.		
Well	STATE-SCHEIMER #1-16		
Field			
County	CHEYENNE		
State	COLORADO		
Company	MULL DRILLING COMPANY, INC.		
Well	STATE-SCHEIMER #1-16		
Field			
County	CHEYENNE		
State	COLORADO		
Location:	API # : 05-017-07707-00 1457' FNL & 2494' FEL SW/4 - NE/4		
Permanent Datum	GROUND LEVEL	Elevation	4190
Log Measured From	KELLY BUSHING 11' A.G.L.		
Drilling Measured From	KELLY BUSHING		
SEC 16	TWP 16S	RGE 46W	
Date	10/21/11		
Run Number	TWO		
Depth Driller	5420		
Depth Logger	5418		
Bottom Logged Interval	5400		
Top Log Interval	3600		
Casing Driller	8 5/8" @ 520		
Casing Logger	522		
Bit Size	7 7/8		
Type Fluid in Hole	CHEMICAL MUD	CHLORIDES 2900 PPM	
Density / Viscosity	9.3/48		
pH / Fluid Loss	9.0/8.0		
Source of Sample	FLOWLINE		
Rim @ Meas. Temp	1.1 @ 76F		
Rmf @ Meas. Temp	.82 @ 76F		
Rmc @ Meas. Temp	1.32 @ 76F		
Source of Rmf / Rmc	MEASURED		
Rim @ BHT	.65 @ 128F		
Time Circulation Stopped	2 HOURS		
Time Logger on Bottom			
Maximum Recorded Temperature	128F		
Equipment Number	680		
Location	HAYS, KS.		
Recorded By	JASON CAPPELLUCCI		
Witnessed By	PHIL ASKEY		

<<< Fold Here >>>

All interpretations are opinions based on inferences from electrical or other measurements and we cannot and do not guarantee the accuracy or correctness of any interpretation, and we shall not, except in the case of gross or willful negligence on our part, be liable or responsible for any loss, costs, damages, or expenses incurred or sustained by anyone resulting from any interpretation made by any of our officers, agents or employees. These interpretations are also subject to our general terms and conditions set out in our current Price Schedule.

Comments

THANK YOU FOR USING SUPERIOR WELL SERVICE (785) 628-6395
DIRECTIONS
CHEYENNE WELLS CO. - W. TO FIRSTVIEW (RD 34) - 8 S. TO T
1/2 W. - 2 1/2 S. - 1 W. - 1/2 N - W. INTO

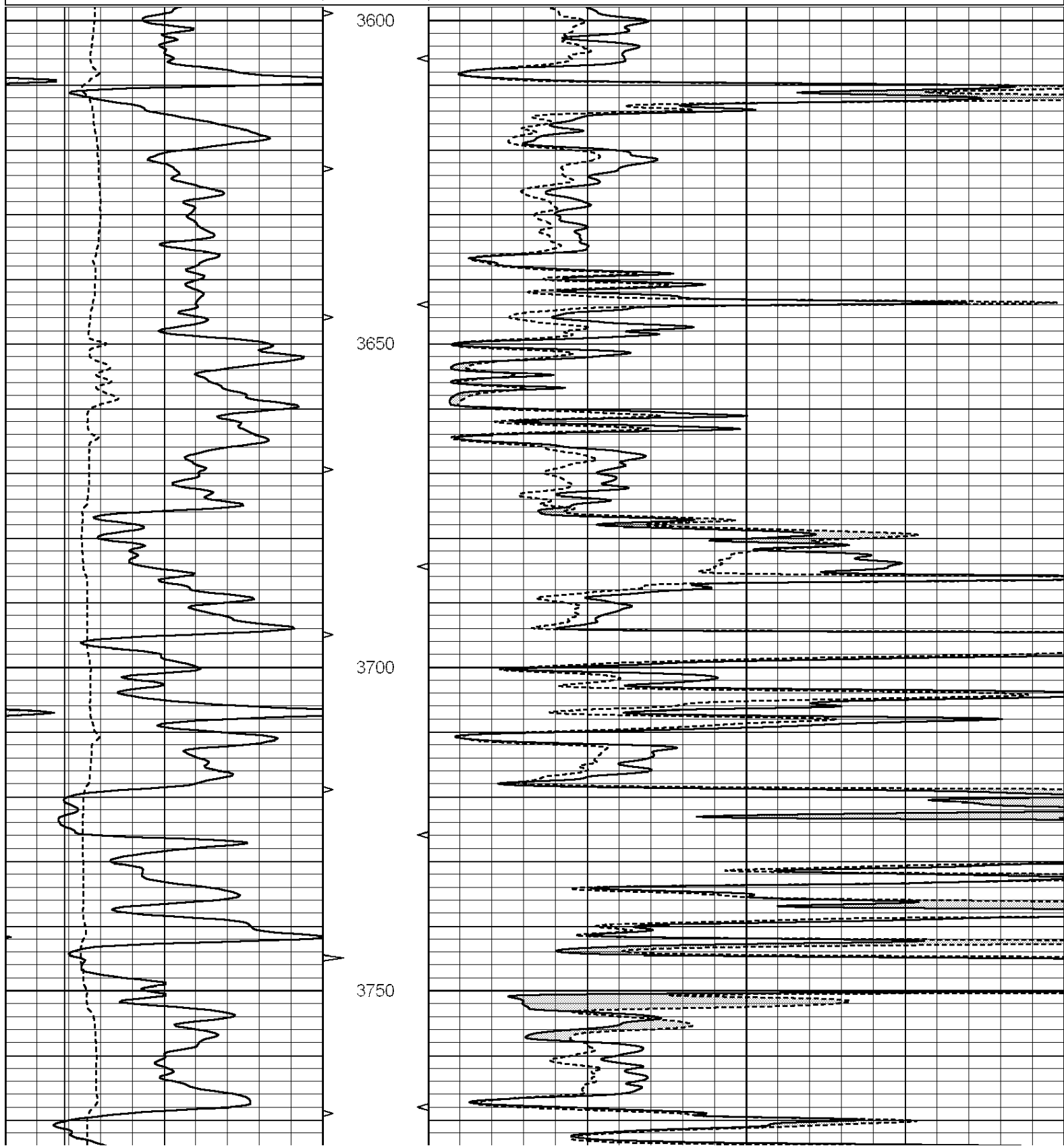


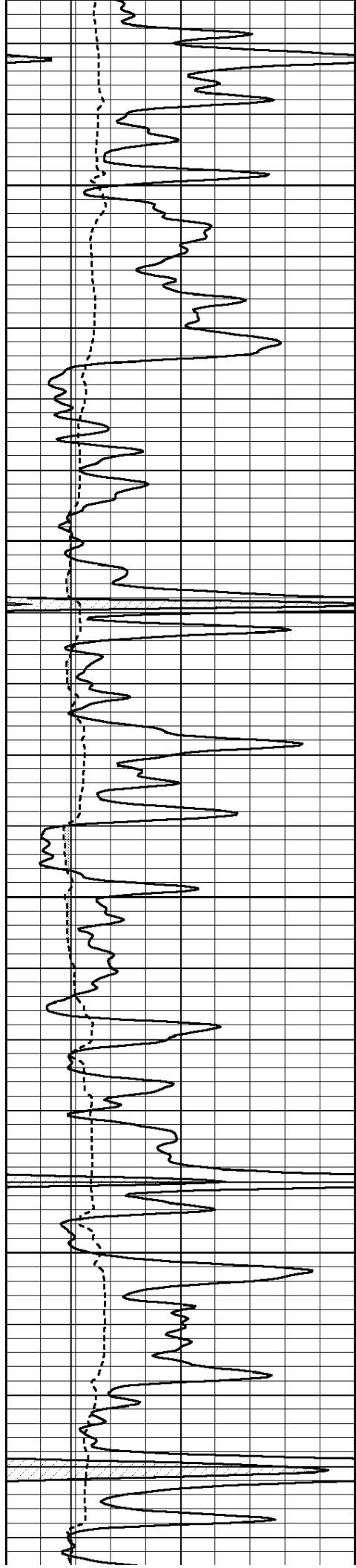
SUPERIOR
Hays,
Kansas

MAIN SECTION

Database File: 007888pe.db
Dataset Pathname: pass6.3
Presentation Format: _micro
Dataset Creation: Fri Oct 21 22:36:59 2011 by Calc Open-Cased 090629
Charted by: Depth in Feet scaled 1:240

0	GAMMA RAY (GAPI)	150	ABHV	0	MEL1.5 (Ohm-m)	40
6	CALIPER (in)	16	10 (ft3)	0 0	MEL2.0 (Ohm-m)	40
			TBHV			
			0 (ft3)	10		



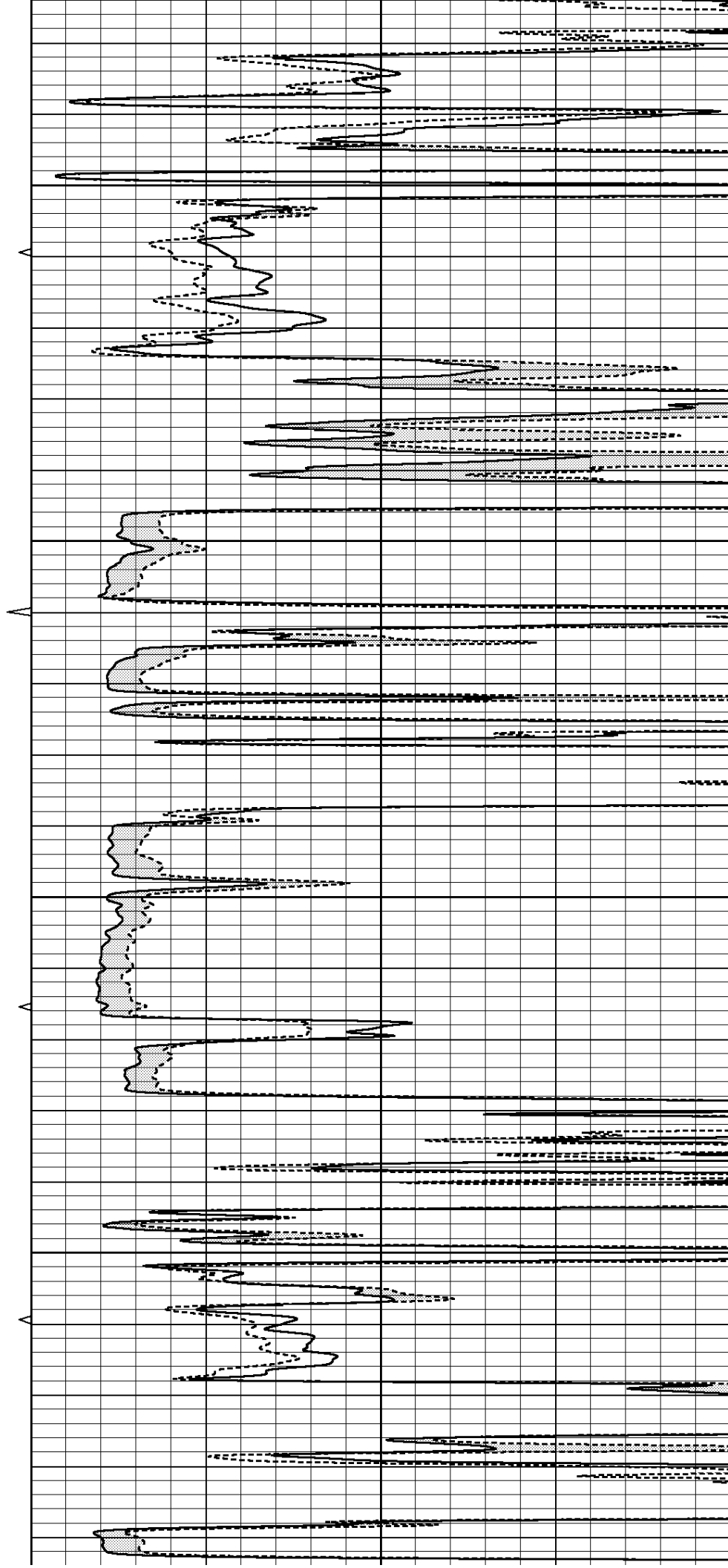


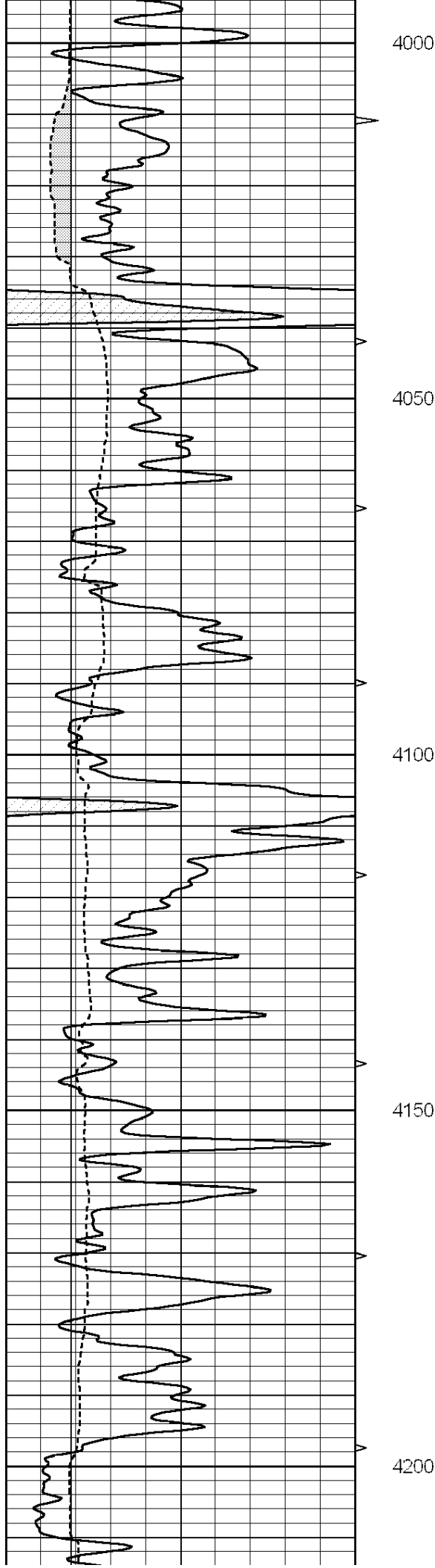
3800

3850

3900

3950





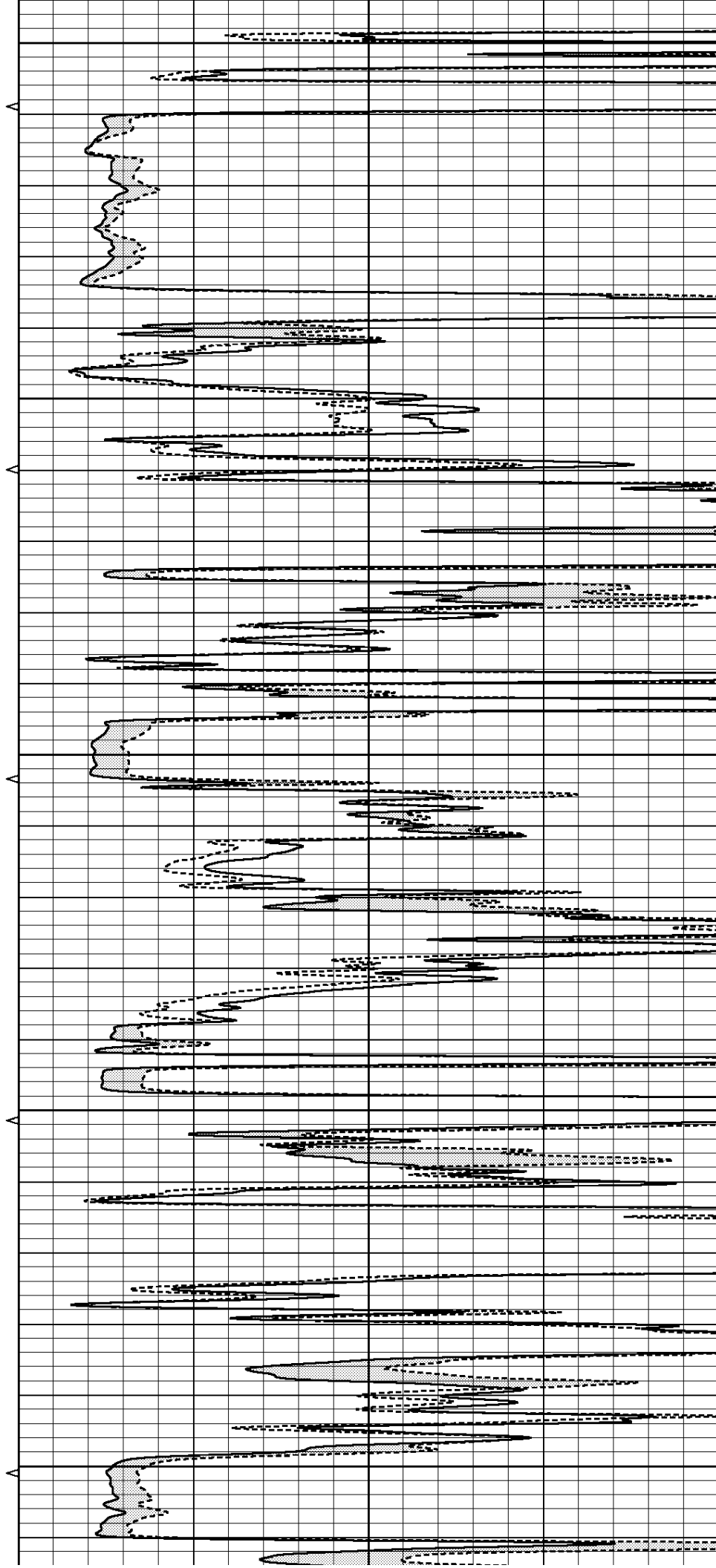
4000

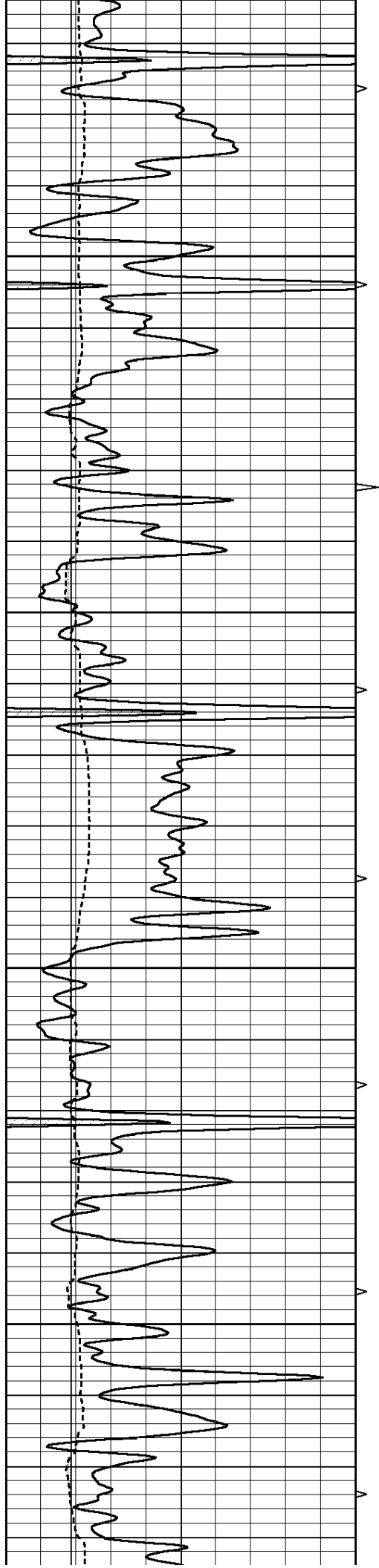
4050

4100

4150

4200



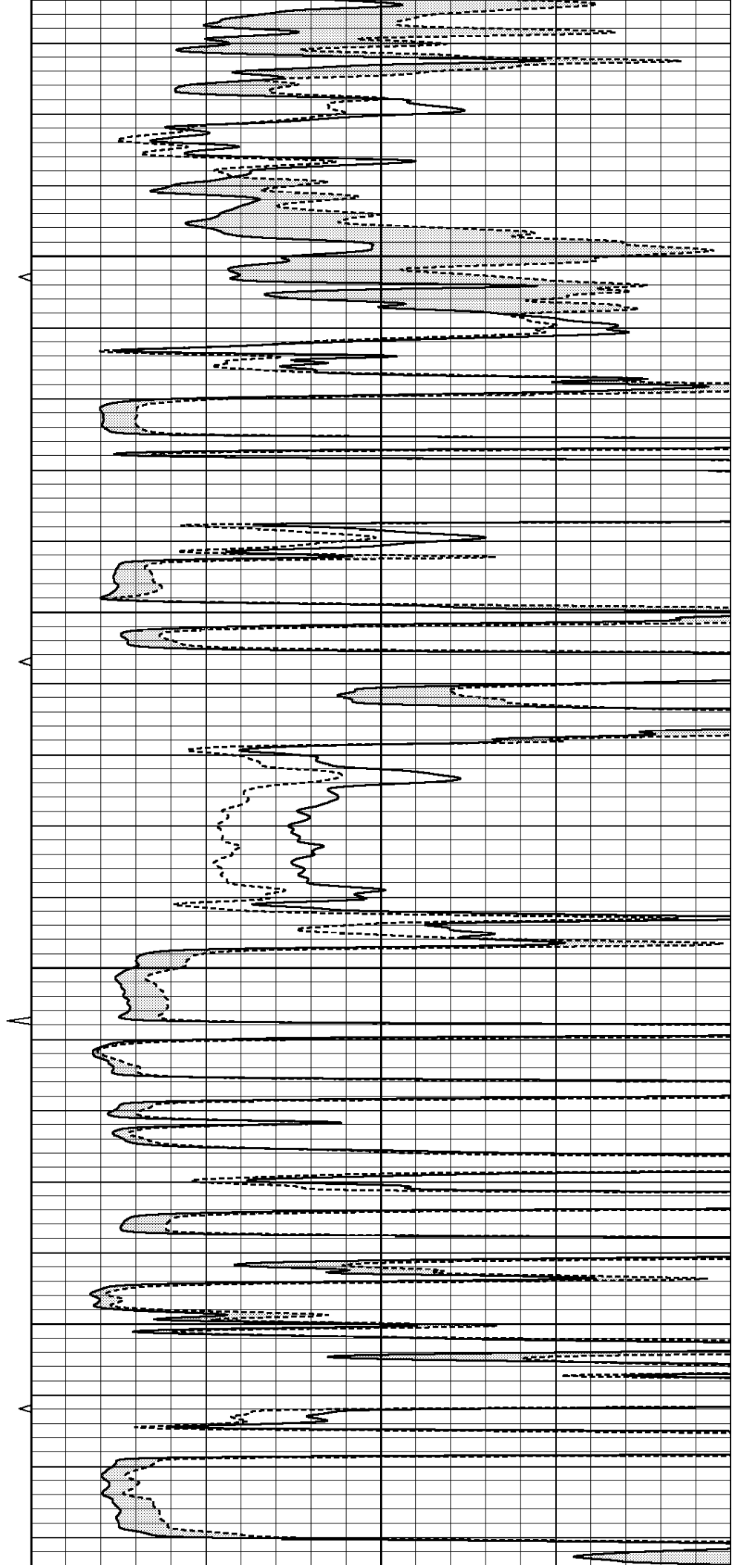


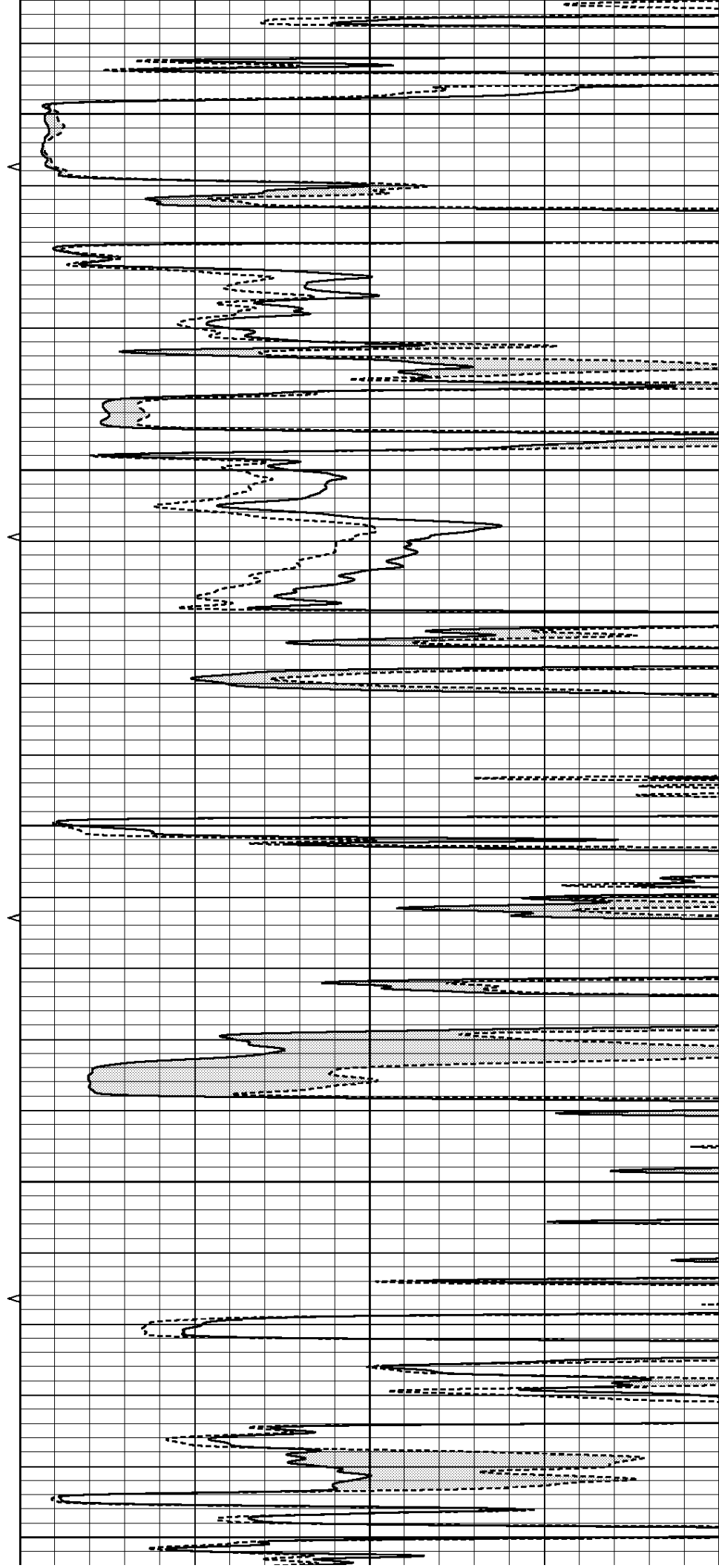
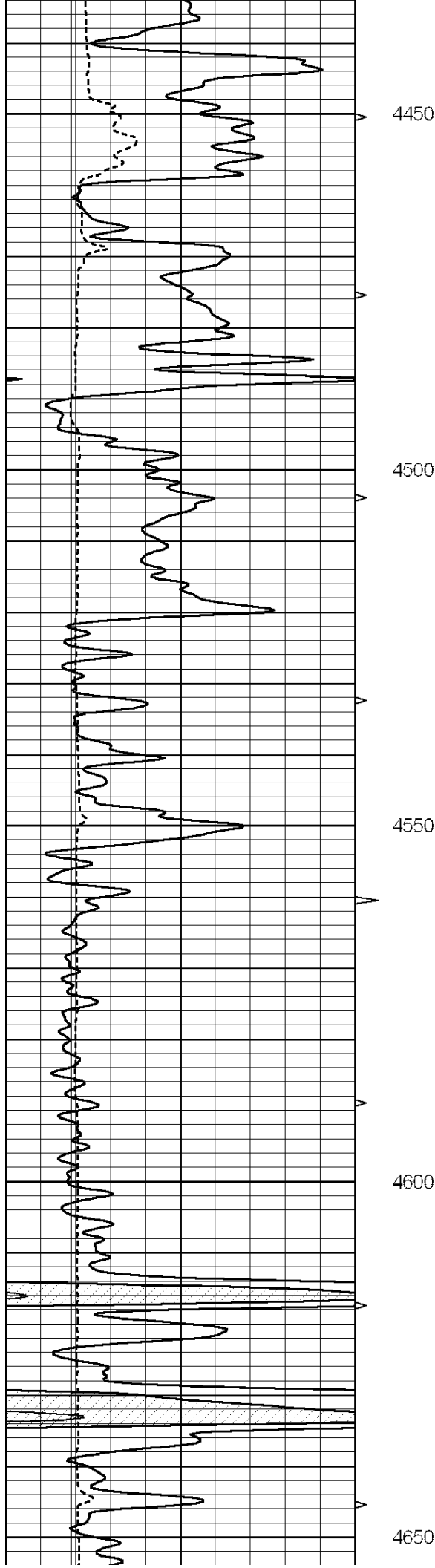
4250

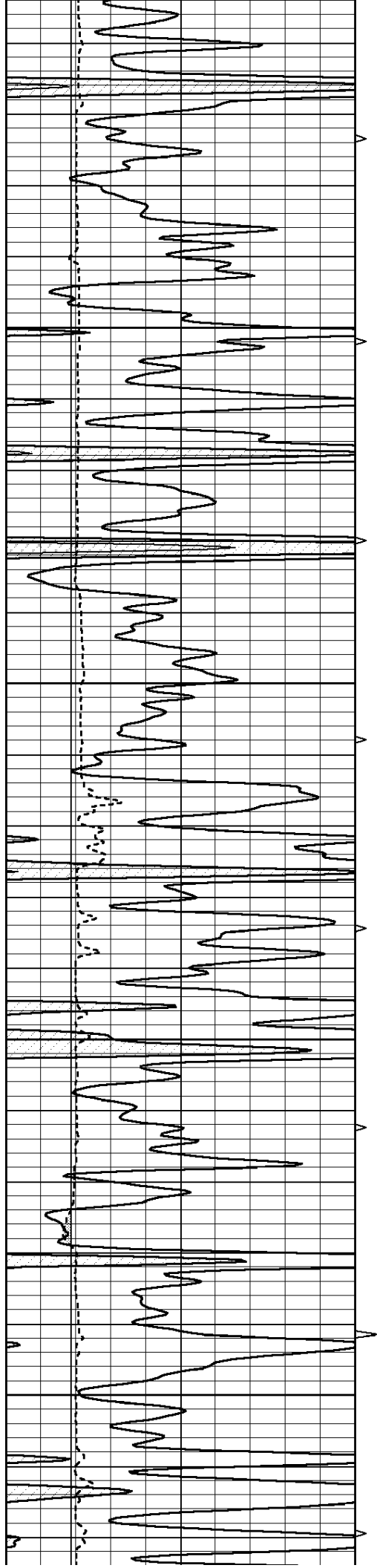
4300

4350

4400





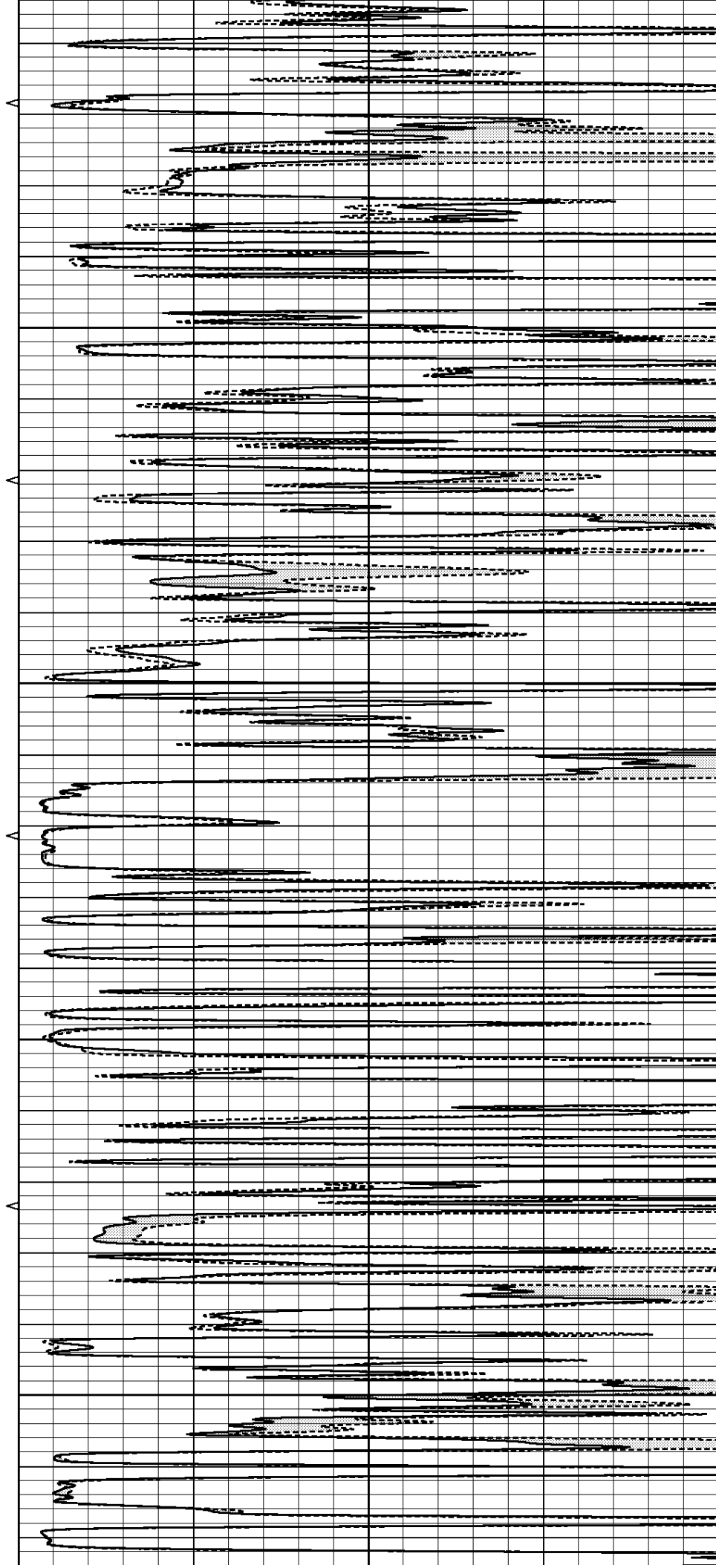


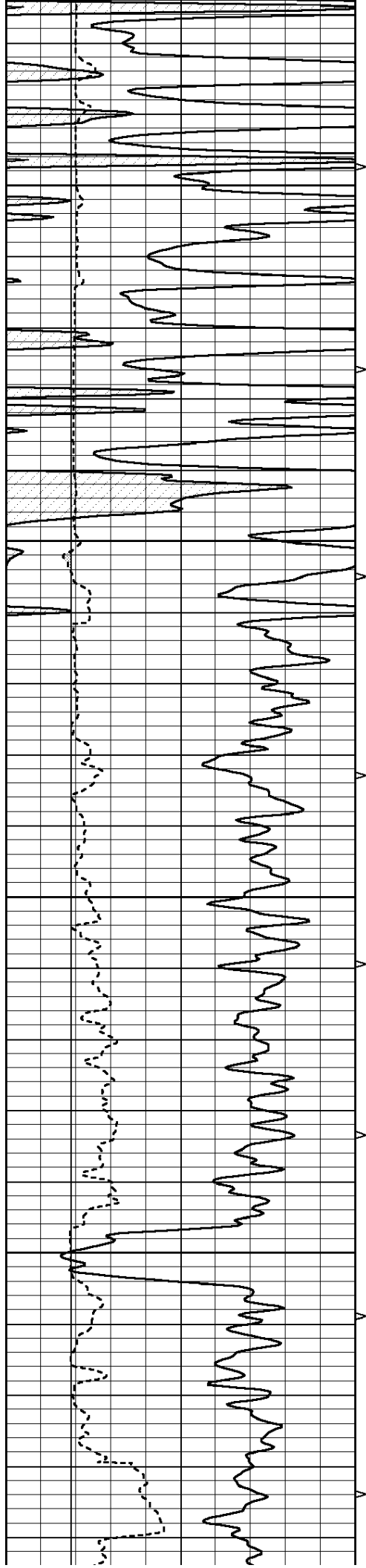
4700

4750

4800

4850





4900

4950

5000

5050

