



SUPERIOR
Hays,
Kansas

DUAL
INDUCTION
LOG

Company	MULL DRILLING COMPANY, INC.	Company	MULL DRILLING COMPANY, INC.
Well	STATE-SCHEIMER #1-16	Well	STATE-SCHEIMER #1-16
Field		Field	
County	CHEYENNE	County	CHEYENNE
State	COLORADO	State	COLORADO
Location:	API # : 05-017-07707-00 1457' FNL & 2494' FEL SW/4 - NE/4	Permanent Datum Log Measured From Drilling Measured From	GROUND LEVEL KELLY BUSHING 11' A.G.L. KELLY BUSHING
	SEC 16 TWP 16S RGE 46W	Elevation	4190
		Other Services CDL/CNL/PE MEL/SON	
Date	10/21/11		
Run Number	ONE		
Depth Driller	5420		
Depth Logger	5418		
Bottom Logged Interval	5416		
Top Log Interval	00		
Casing Driller	8 5/8" @ 520		
Casing Logger			
Bit Size	7 7/8		
Type Fluid in Hole	CHEMICAL MUD	CHLORIDES 2900 PPM	
Density / Viscosity	9.3/48		
pH / Fluid Loss	9.0/8.0		
Source of Sample	FLOWLINE		
Rim @ Meas. Temp	1.1 @ 76F		
Rmf @ Meas. Temp	.82 @ 76F		
Rmc @ Meas. Temp	1.32 @ 76F		
Source of Rmf / Rmc	MEASURED		
Rim @ BHT	.65 @ 128F		
Time Circulation Stopped	2 HOURS		
Time Logger on Bottom			
Maximum Recorded Temperature	128F		
Equipment Number	680		
Location	HAYS, KS.		
Recorded By	JASON CAPPELLUCCI		
Witnessed By	PHIL ASKEY		

<<< Fold Here >>>

All interpretations are opinions based on inferences from electrical or other measurements and we cannot and do not guarantee the accuracy or correctness of any interpretation, and we shall not, except in the case of gross or willful negligence on our part, be liable or responsible for any loss, costs, damages, or expenses incurred or sustained by anyone resulting from any interpretation made by any of our officers, agents or employees. These interpretations are also subject to our general terms and conditions set out in our current Price Schedule.

Comments

THANK YOU FOR USING SUPERIOR WELL SERVICE (785) 628-6395
DIRECTIONS
CHEYENNE WELLS CO. - W. TO FIRSTVIEW (RD 34) - 8 S. TO T
1/2 W. - 2 1/2 S. - 1 W. - 1/2 N - W. INTO



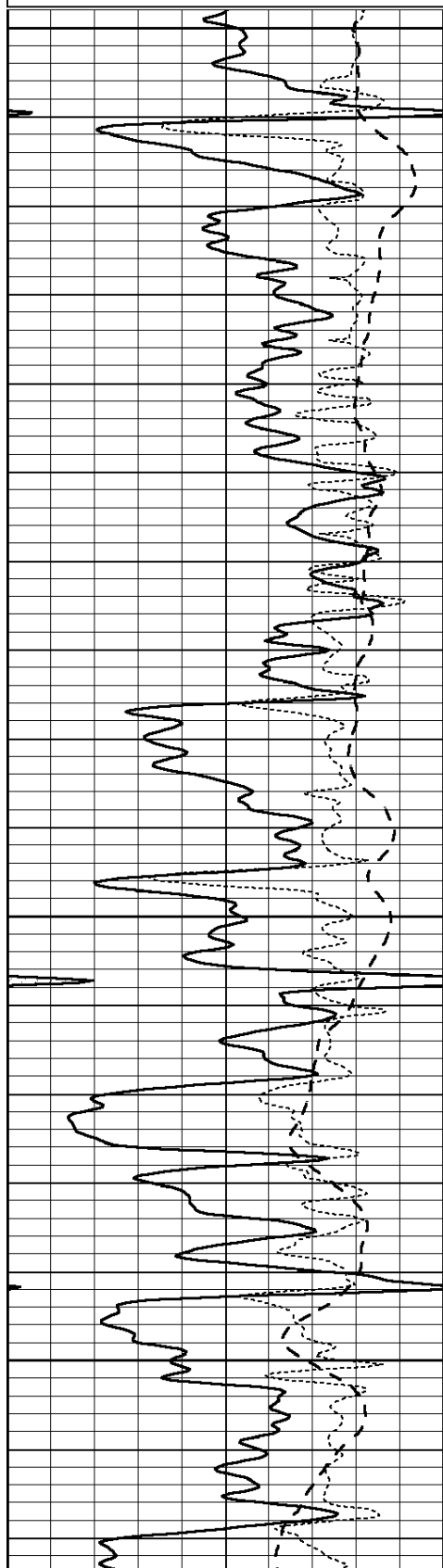
SUPERIOR
Hays,
Kansas

MAIN SECTION

Database File: 007888pe.db
Dataset Pathname: pass3.1
Presentation Format: _dil
Dataset Creation: Fri Oct 21 20:19:38 2011 by Calc Open-Cased 090629
Charted by: Depth in Feet scaled 1:240

0	GAMMA RAY (GAPI)	150
-100	SP (mV)	100
-250	Rxo/Rt	50

0.2	SHALLOW GUARD (Ohm-m)	2000
0.2	MEDIUM INDUCTION (Ohm-m)	2000
0.2	DEEP INDUCTION (Ohm-m)	2000

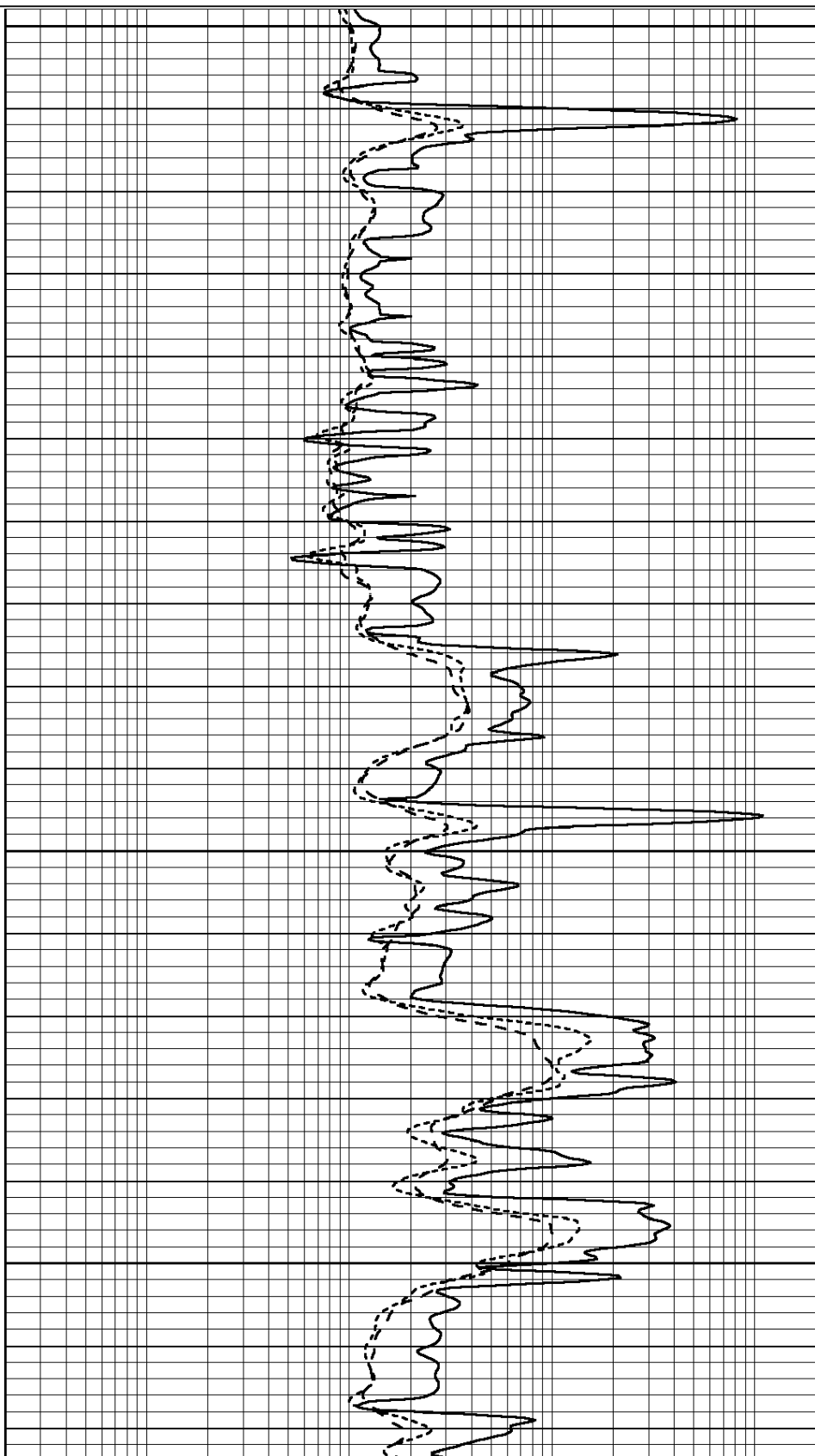


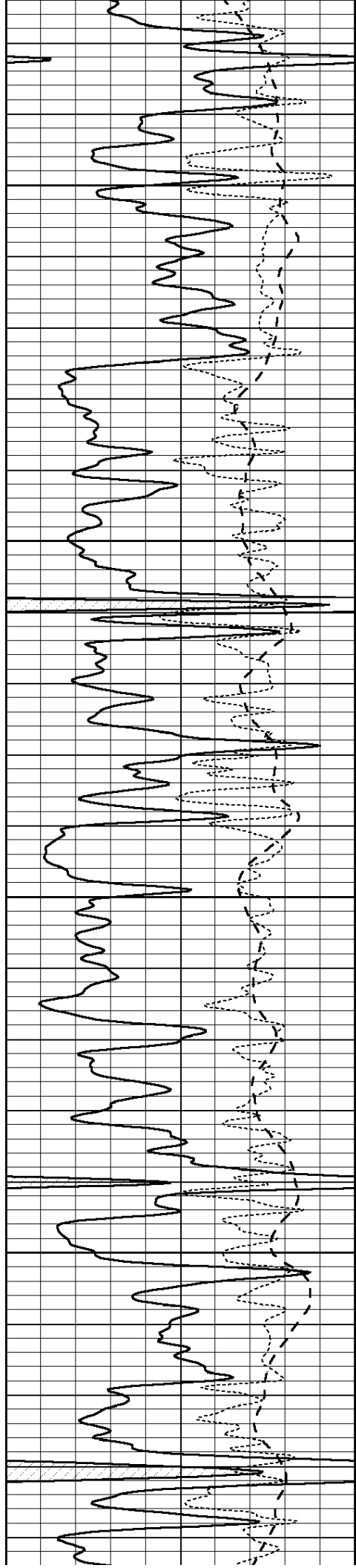
3600

3650

3700

3750



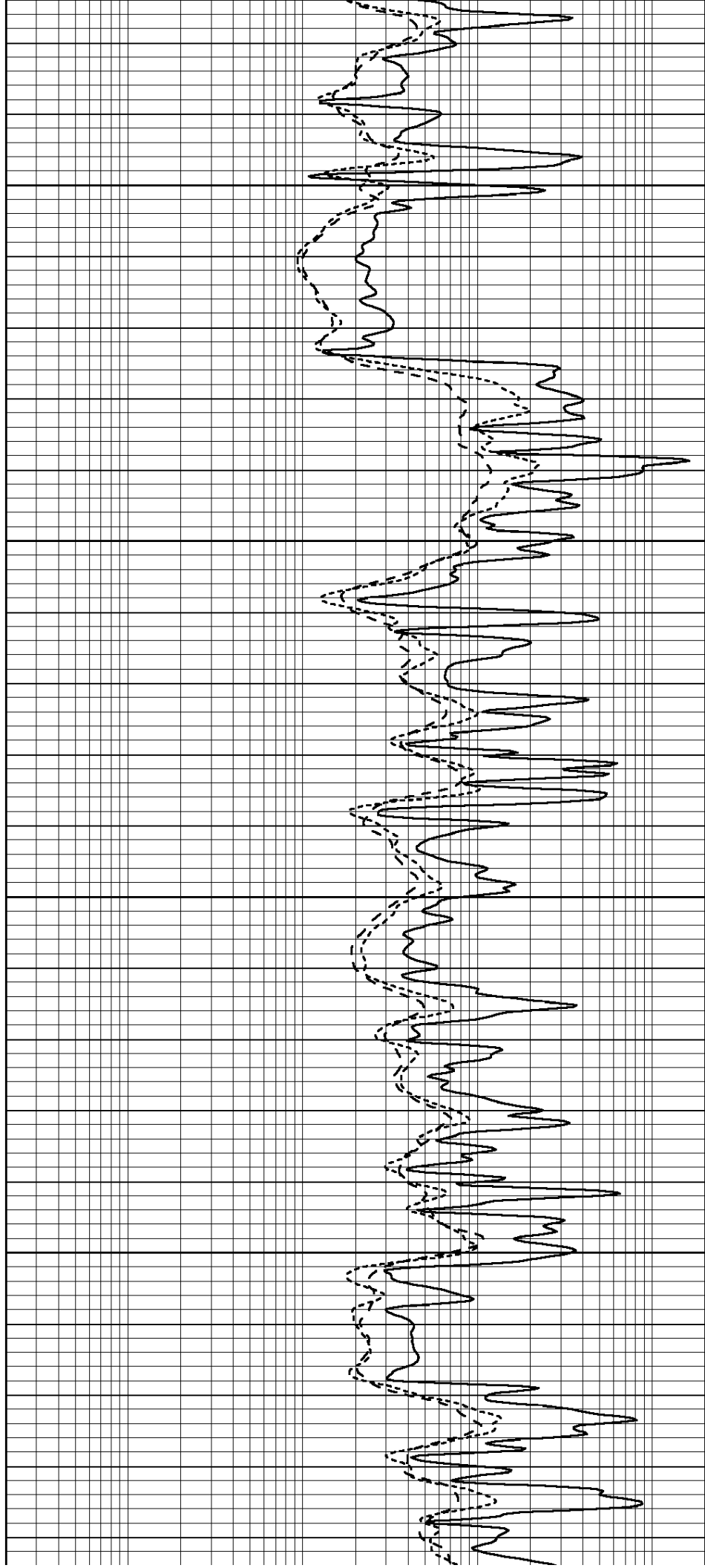


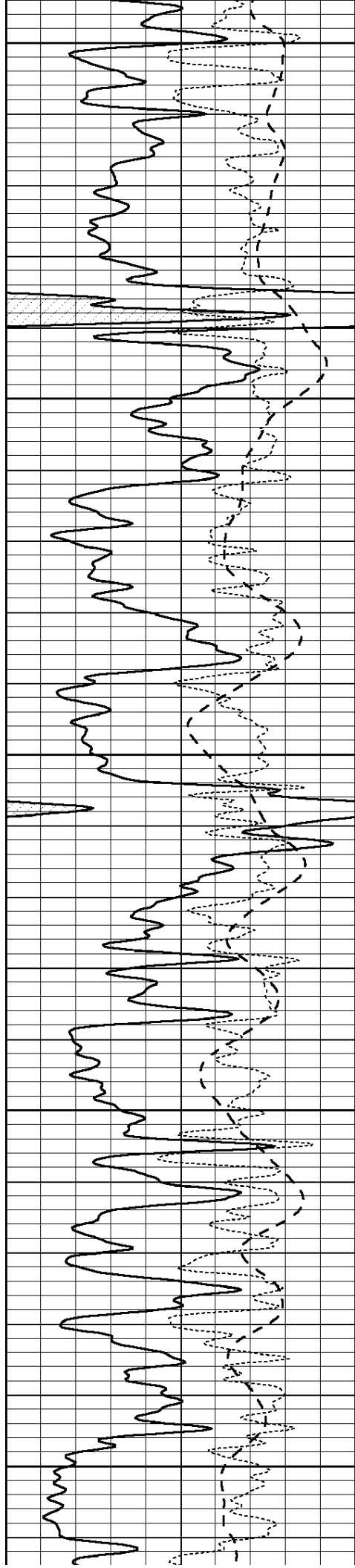
3800

3850

3900

3950





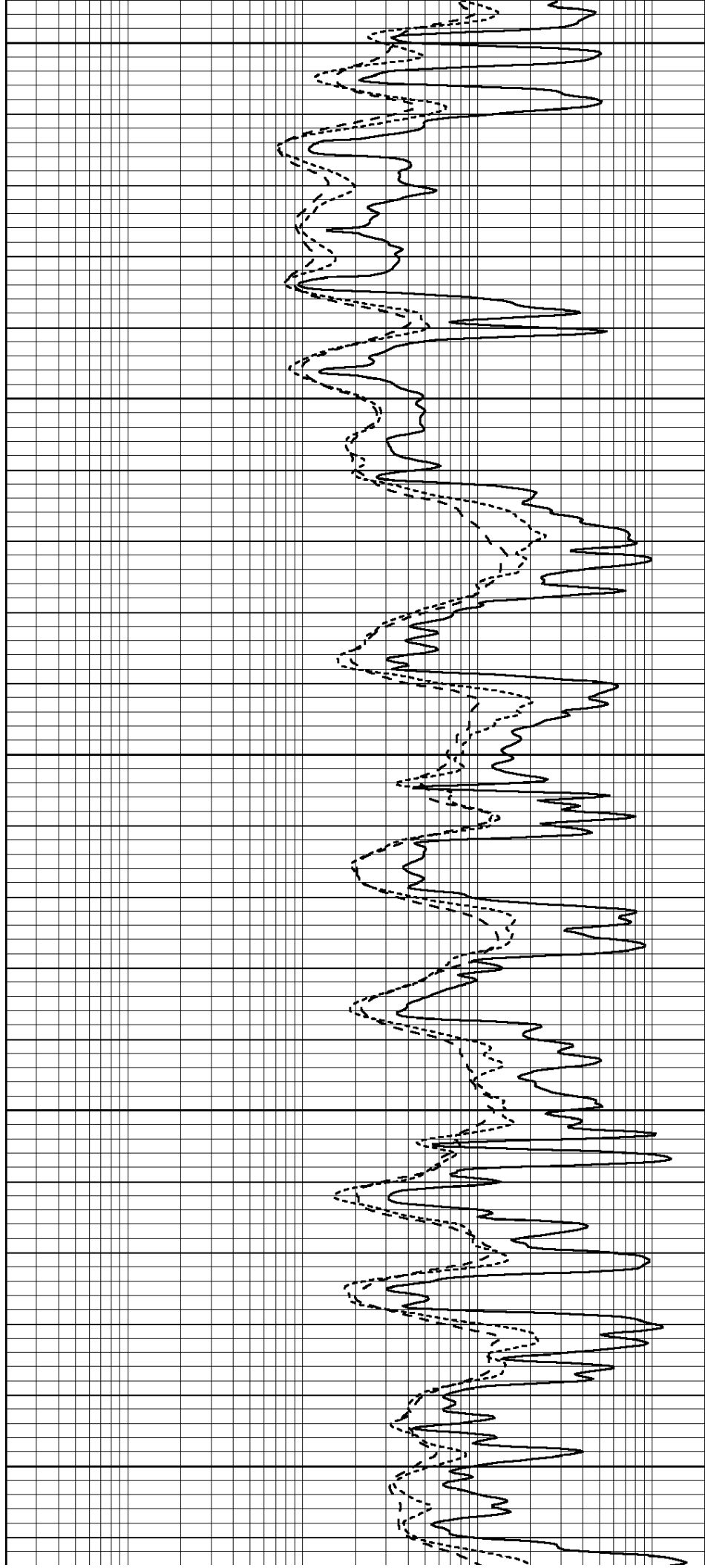
4000

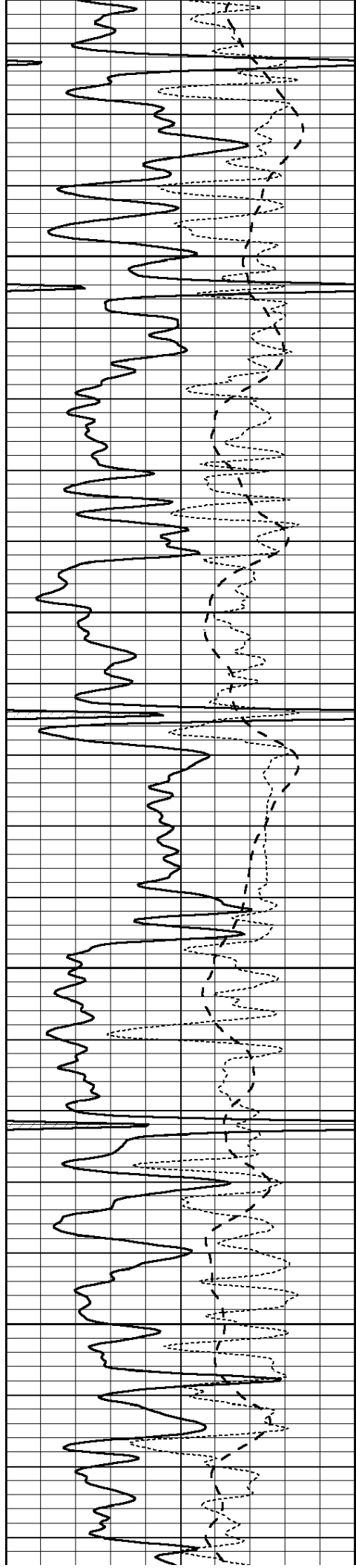
4050

4100

4150

4200



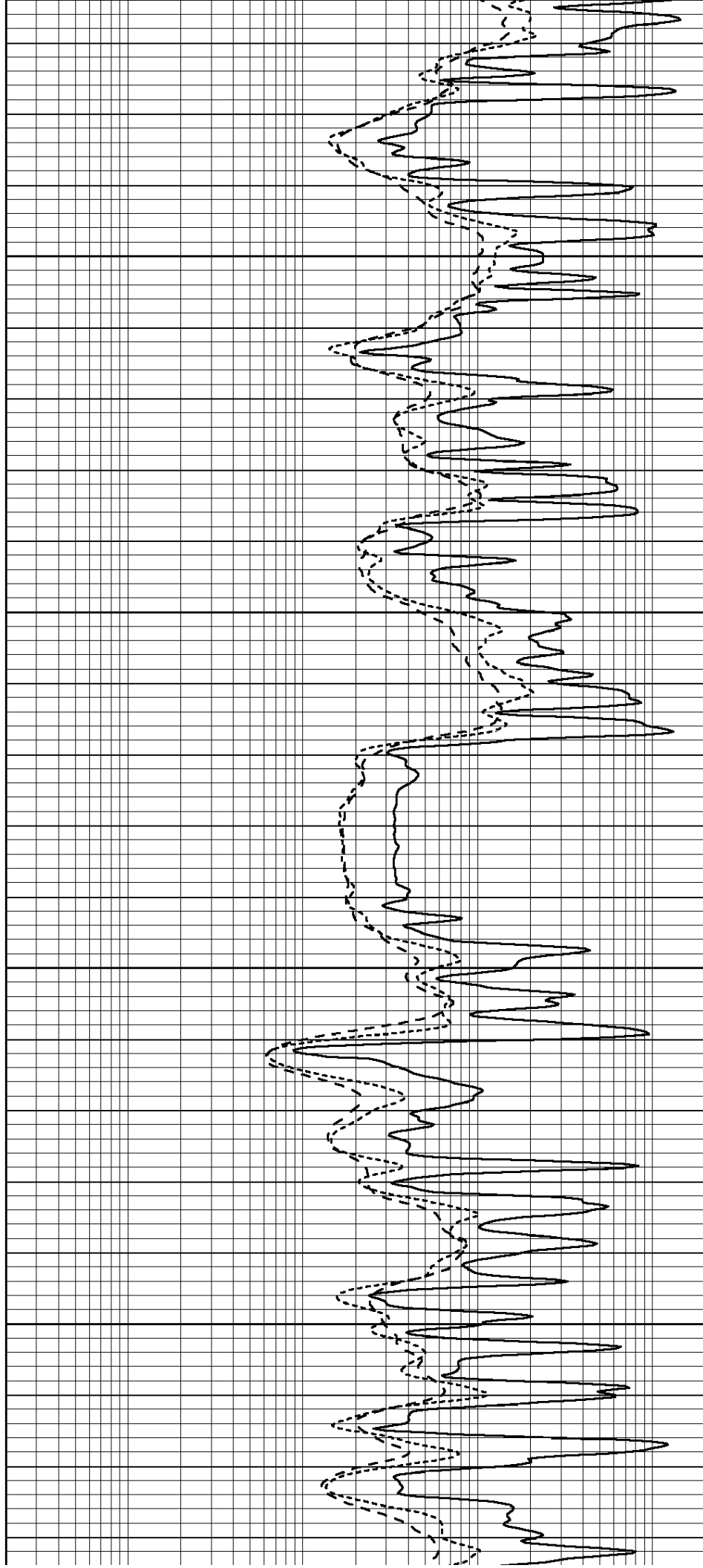


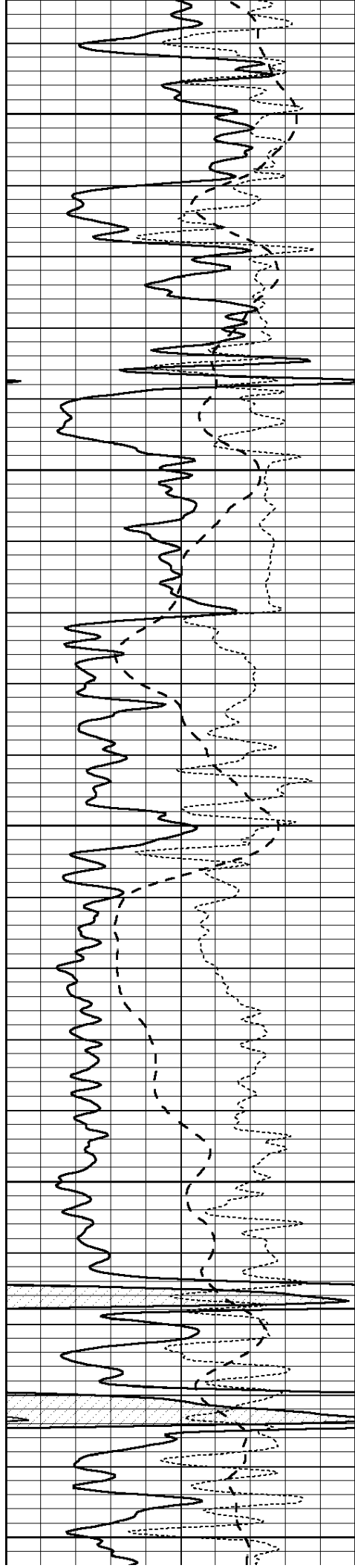
4250

4300

4350

4400





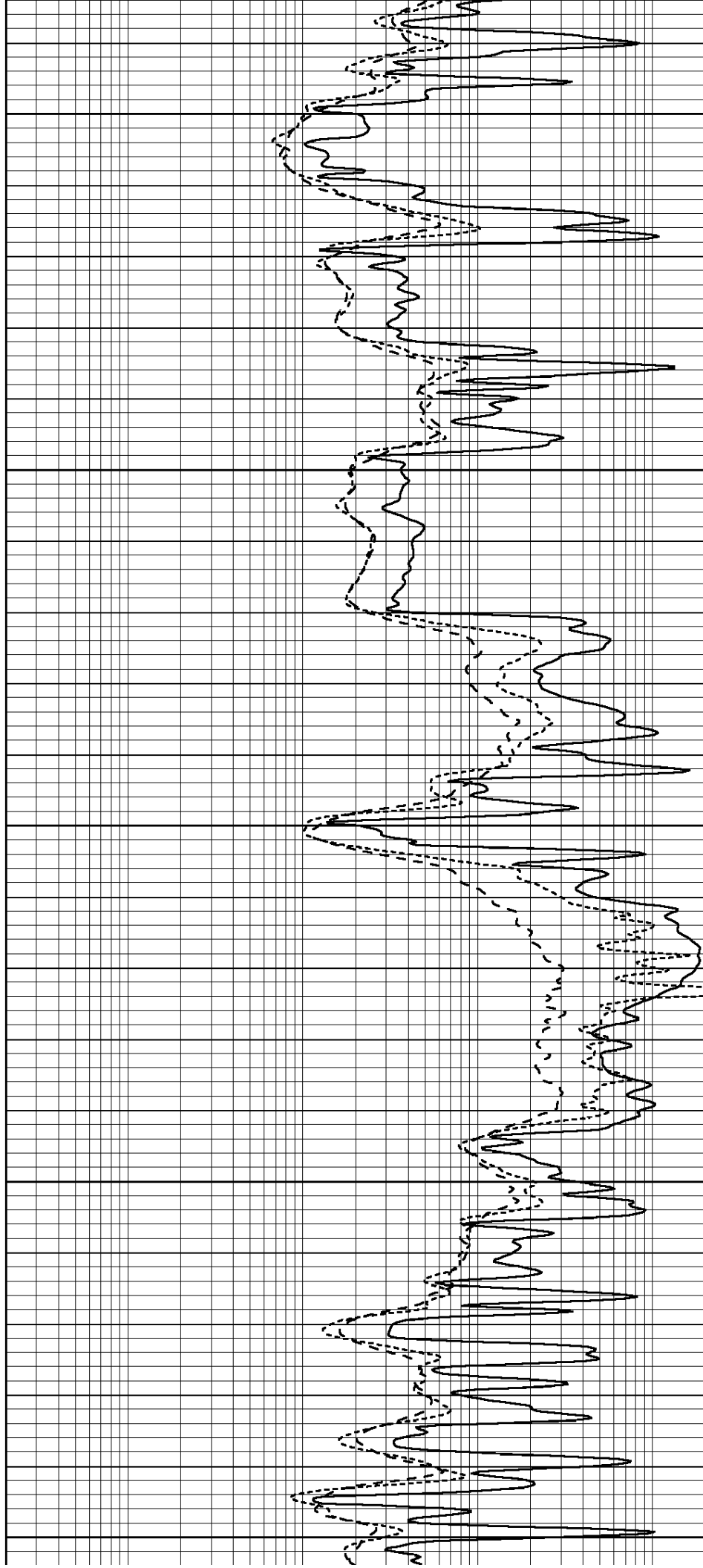
4450

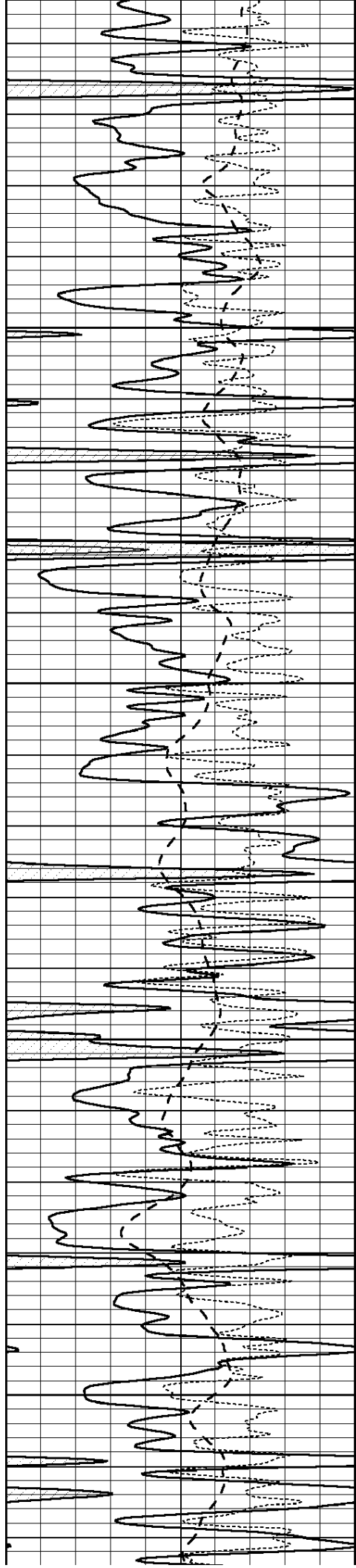
4500

4550

4600

4650



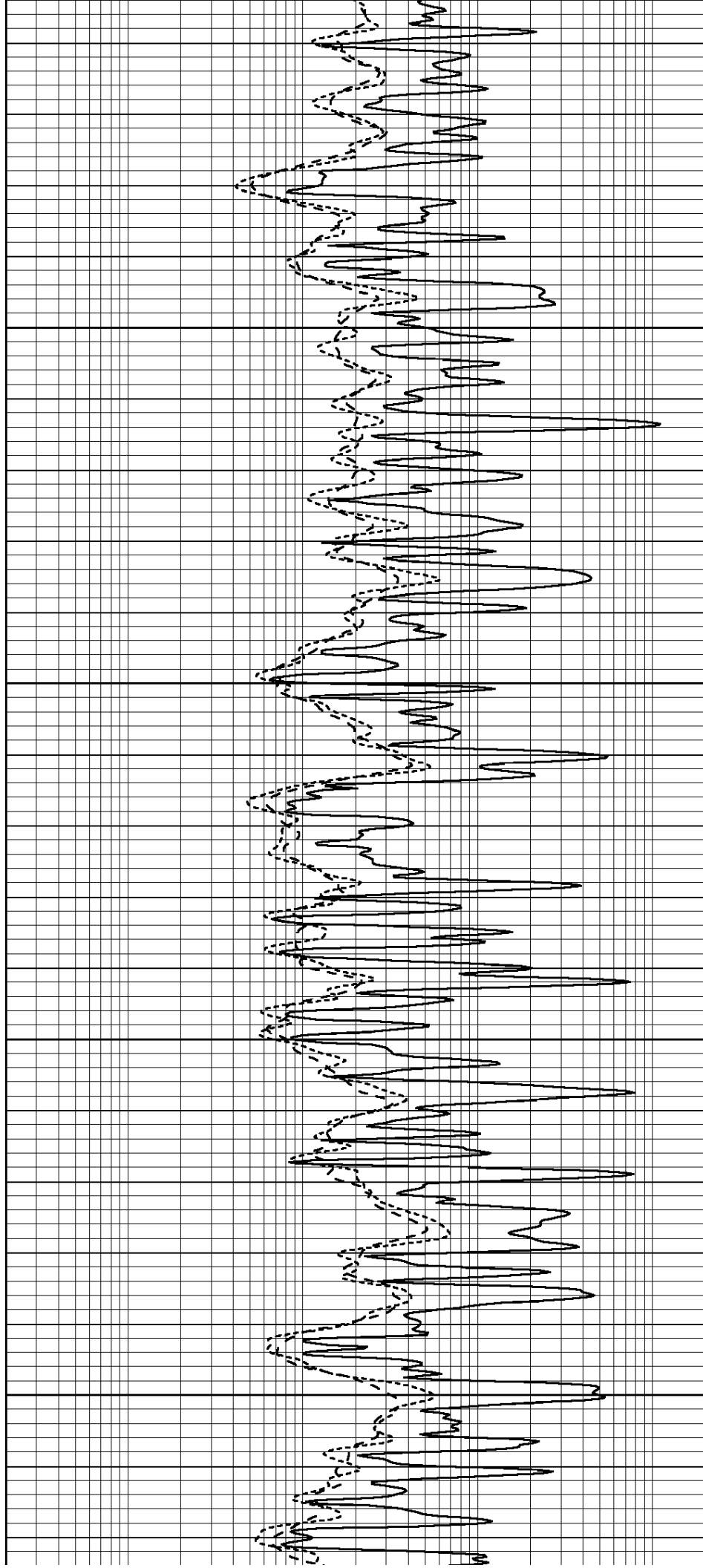


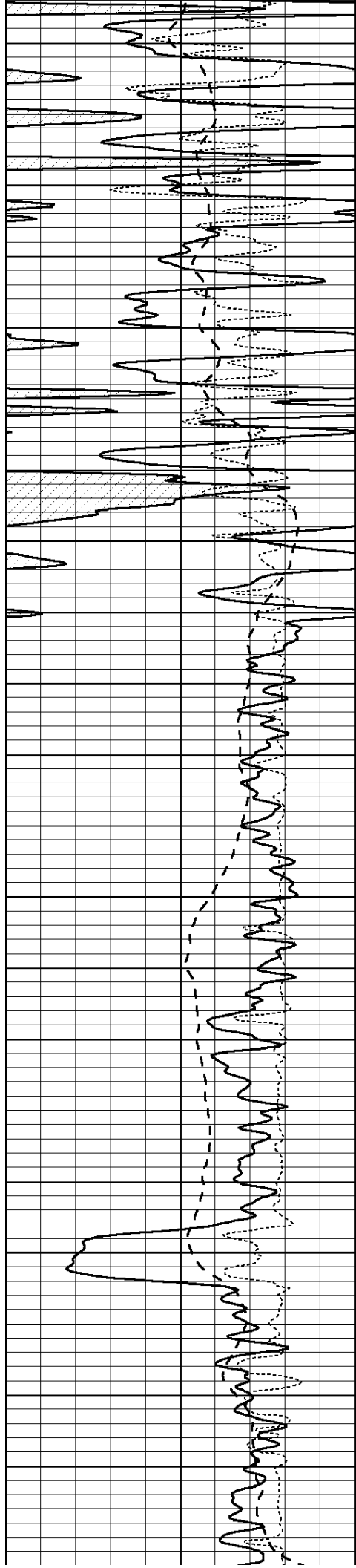
4700

4750

4800

4850



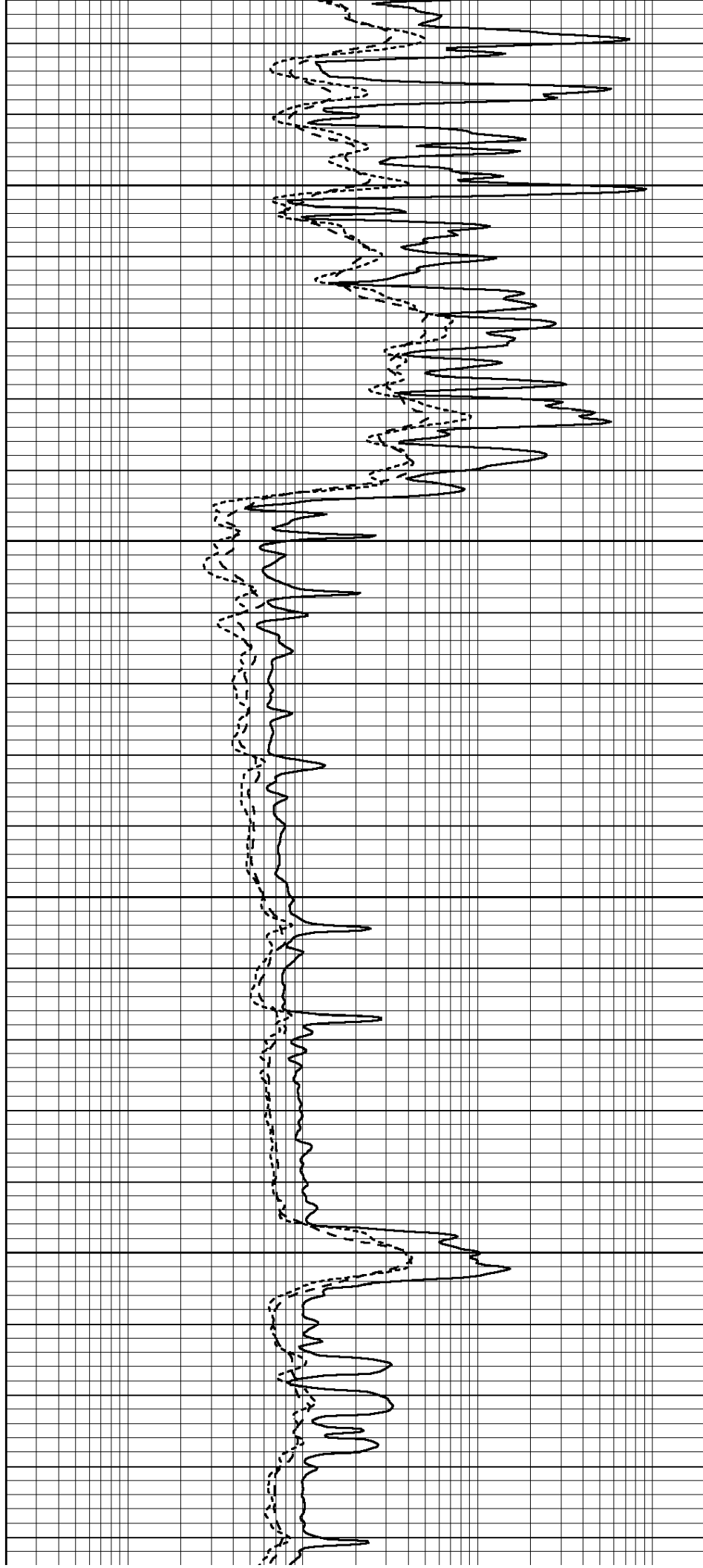


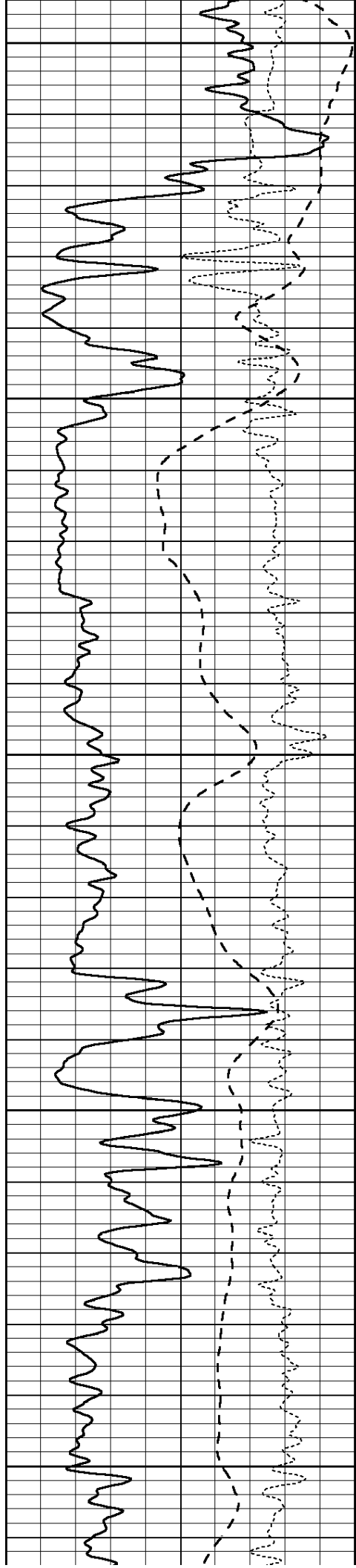
4900

4950

5000

5050





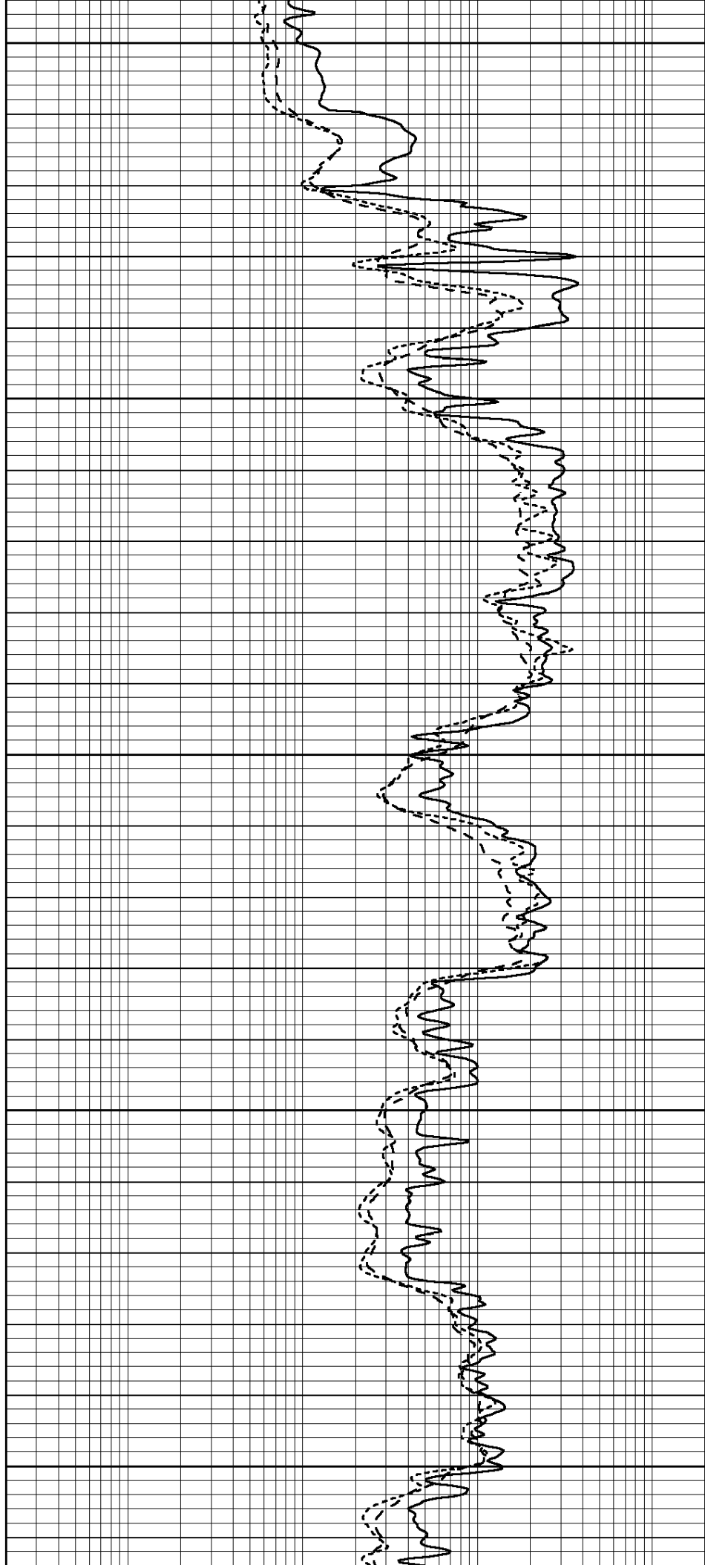
5100

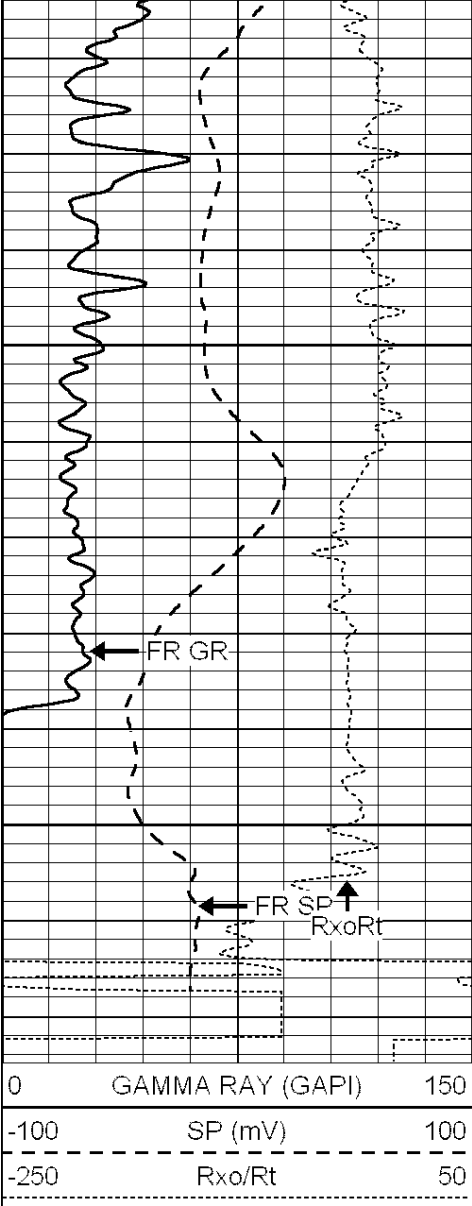
5150

5200

5250

5300





5350

5400

LTD 5418

FR RILD
FR RILM
FR RLL3

