



**TRILOBITE**  
**TESTING, INC.**

## DRILL STEM TEST REPORT

Mull Drilling Co Inc

1700 N Waterfront PKWY  
B# 1200  
Wichita, Ks  
ATTN: Phil Askey

**16-16s-46w Cheyenne, Col**

**State Scheimer #1-16**

Job Ticket: 44455

**DST#: 2**

Test Start: 2011.10.18 @ 11:07:01

### GENERAL INFORMATION:

Formation: **Miss - St. Louis**

Deviated: No Whipstock: 0.00 ft (KB)

Time Tool Opened: 13:34:51

Time Test Ended: 20:21:50

Test Type: Conventional Bottom Hole (Reset)

Tester: Chuck Smith

Unit No: 37

**Interval: 5127.00 ft (KB) To 5215.00 ft (KB) (TVD)**

Total Depth: 5215.00 ft (KB) (TVD)

Hole Diameter: 7.78 inches Hole Condition: Fair

Reference Elevations: 4201.00 ft (KB)

4190.00 ft (CF)

KB to GR/CF: 11.00 ft

**Serial #: 8018 Inside**

Press @ Run Depth: 157.10 psig @ 5130.00 ft (KB)

Start Date: 2011.10.18

End Date:

2011.10.18

Start Time: 11:07:03

End Time:

20:21:50

Capacity: 8000.00 psig

Last Calib.: 2011.10.18

Time On Btm: 2011.10.18 @ 13:33:51

Time Off Btm: 2011.10.18 @ 17:20:41

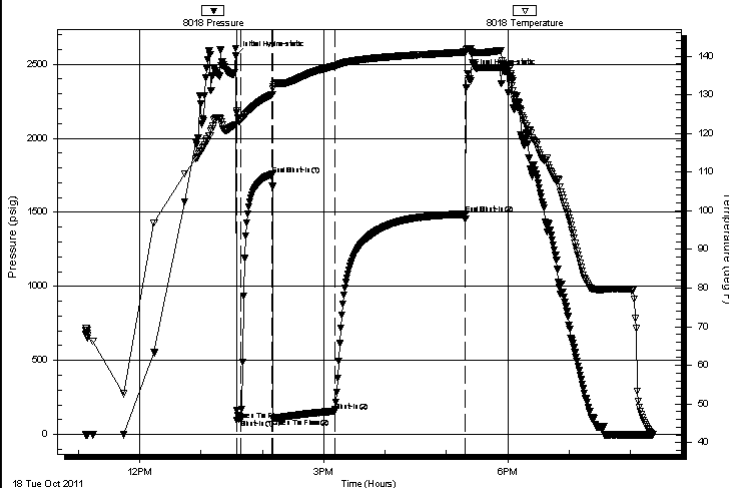
TEST COMMENT: 6" Blow.

Weak surface return died @ 4 min.

B.O.B. @ 28 min.

1/2" Return.

Pressure vs. Time



### PRESSURE SUMMARY

Time (Min.)	Pressure (psig)	Temp (deg F)	Annotation
0	2556.23	122.25	Initial Hydro-static
1	94.22	125.85	Open To Flow (1)
6	100.23	123.55	Shut-In(1)
36	1756.15	130.02	End Shut-In(1)
37	107.29	131.64	Open To Flow (2)
97	157.10	137.42	Shut-In(2)
225	1487.71	141.03	End Shut-In(2)
227	2438.70	141.99	Final Hydro-static

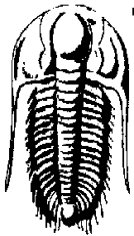
### Recovery

Length (ft)	Description	Volume (bbl)
122.00	OSM 100m	0.60
218.00	GSOCM 5g 1o 94m	2.49
0.00	93 Feet weak GIP	0.00

\* Recovery from multiple tests

### Gas Rates

	Choke (inches)	Pressure (psig)	Gas Rate (Mcf/d)
--	----------------	-----------------	------------------



**TRILOBITE**  
**TESTING, INC.**

## DRILL STEM TEST REPORT

### FLUID SUMMARY

Mull Drilling Co Inc

**16-16s-46w Cheyenne, Col**

1700 N Waterfront PKWY

**State Scheimer #1-16**

B# 1200

Job Ticket: 44455

**DST#: 2**

Wichita, Ks

Test Start: 2011.10.18 @ 11:07:01

ATTN: Phil Askey

### Mud and Cushion Information

Mud Type: Gel Chem

Cushion Type:

Oil API:

deg API

Mud Weight: 9.00 lb/gal

Cushion Length:

ft

Water Salinity:

ppm

Viscosity: 54.00 sec/qt

Cushion Volume:

bbl

Water Loss: 7.98 in<sup>3</sup>

Gas Cushion Type:

Resistivity: 0.00 ohm.m

Gas Cushion Pressure:

psig

Salinity: 2500.00 ppm

Filter Cake: 1.00 inches

### Recovery Information

Recovery Table

Length ft	Description	Volume bbl
122.00	OSM 100m	0.600
218.00	GSOCM 5g 1o 94m	2.493
0.00	93 Feet weak GIP	0.000

Total Length: 340.00 ft

Total Volume: 3.093 bbl

Num Fluid Samples: 0

Num Gas Bombs: 0

Serial #:

Laboratory Name:

Laboratory Location:

Recovery Comments:

Serial #: 8018

Inside

Mull Drilling Co Inc

State Scheiner #1-16

DST Test Number: 2

