

T6N, R90W, 6th P.M.

QUICKSILVER RESOURCES, INC.

Well location, WILHITE #43-07, located as shown in the NE 1/4 SE 1/4 of Section 7, T6N, R90W, 6th P.M., Moffat County, Colorado.

BASIS OF ELEVATION

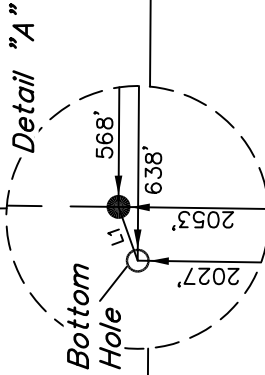
SPOT ELEVATION LOCATED AT THE NORTHEAST CORNER OF SECTION 10, T6N, R93W, 6th. P.M., TAKEN FROM THE HORSE GULCH QUADRANGLE, COLORADO, MOFFAT COUNTY, 7.5 MINUTE QUAD. (TOPOGRAPHIC MAP) PUBLISHED BY THE UNITED STATES DEPARTMENT OF THE INTERIOR, GEOLOGICAL SURVEY. SAID ELEVATION IS MARKED AS BEING 6246 FEET.

BASIS OF BEARINGS

BASIS OF BEARINGS IS A G.P.S. OBSERVATION.

N89°42'W - 5340.06' (G.L.O.)

LINE TABLE		
LINE	BEARING	LENGTH
L1	S70°20'46"W	74.33'



NOTE:
SEE ADDENDUM TO LEGAL PLAT FOR
EXISTING IMPROVEMENTS WITHIN 400'
OF THE PROPOSED DISTURBANCE.

LEASE
LINE

WILHITE #43-07
Elev. Ungraded Ground = 6184'

Bottom
Hole
See Detail "A"
Above Left

N00°23'E - 2675.31' (G.L.O.)

1995 Private Alum. Cap,
1.5' High, PLS #14815
Lat: 40.492308°
Long: 107.524633°

N00°24'15"E

2011 UELS Alum. Cap,
0.3' Below Ground
Caps, RLS #17492
Lat: 40.488639°
Long: 107.524669°

2000 Alum. Cap,
0.6' High, Steel Post,
Fence Corner
Caps, RLS #17492
Lat: 40.485078°
Long: 107.534142°

1908 G.L.O. Brass
Cap, 1.5' High,
RLS #17492
Lat: 40.4849475°
Long: 107.524703°

N00°23'58"E

2053'

2027'

N88°59'W - 2623.50' (G.L.O.)

S89°11'47"E - 2626.47' (Meas.)

N00°05'E - 5283.96' (G.L.O.)



SCALE

CERTIFICATE

THIS IS TO CERTIFY THAT THE ABOVE PLAT WAS PREPARED FROM FIELD NOTES OF ACTUAL SURVEYS MADE BY ME OR UNDER MY SUPERVISION AND THAT THE SAME ARE TRUE AND CORRECT TO THE BEST OF MY KNOWLEDGE AND BELIEF.

REV: 10-28-11
REV: 08-29-11
REV: 06-22-11

REGISTERED LAND SURVEYOR
REGISTRATION NO. 17492
STATE OF COLORADO
17492
10-28-11

UNTANH ENGINEERING & LAND SURVEYING

85 SOUTH 200 EAST - VERNAL, UTAH 84078

(435) 789-1017

PDOP=1.5

NAD 83 (TARGET BOTTOM HOLE)	NAD 83 (SURFACE LOCATION)
LATITUDE = 40°29'26.02" (40.490561)	LATITUDE = 40°29'26.27" (40.490631)
LONGITUDE = 107°31'37.00" (107.526944)	LONGITUDE = 107°31'36.09" (107.526692)
NAD 27 (TARGET BOTTOM HOLE)	NAD 27 (SURFACE LOCATION)
LATITUDE = 40°29'26.12" (40.490589)	LATITUDE = 40°29'26.37" (40.490658)
LONGITUDE = 107°31'34.76" (107.526322)	LONGITUDE = 107°31'33.86" (107.526072)
STATE PLANE NAD 83	STATE PLANE NAD 83
N: 1427995.26 E: 2436278.49	N: 1428018.63 E: 2436349.02
STATE PLANE NAD 27	STATE PLANE NAD 27
N: 427994.26 E: 1436436.14	N: 428017.64 E: 1436506.67

LEGEND:

— = 90° SYMBOL

● = PROPOSED WELL HEAD.

▲ = SECTION CORNERS LOCATED.

SCALE

1" = 1000'

DATE SURVEYED:

05-24-11

DATE DRAWN:

06-09-11

REFERENCES

G.L.O. PLAT

FILE

COLD

WEATHER

M.A. C.K. K.O.

PARTY

QUICKSILVER RESOURCES, INC.