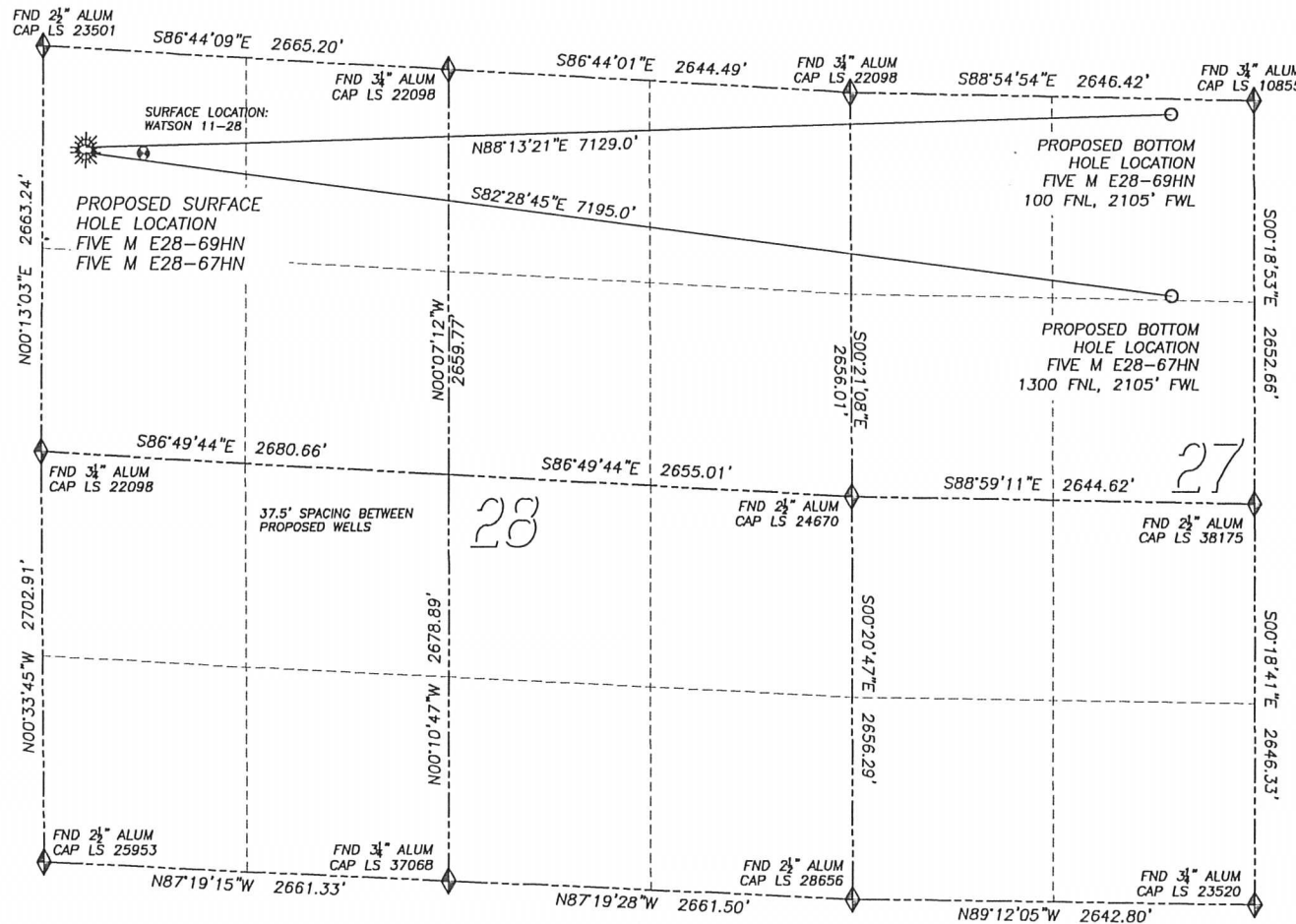


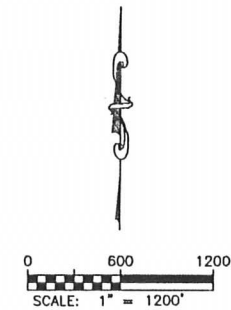
DALEY LAND SURVEYING, INC. PARKER, CO. 80134 303 953 9841
MULTI WELL PAD DIRECTIONAL LAYOUT
FIVE M E28-69HN & FIVE M E28-67HN
 SECTION 28, TOWNSHIP 6 NORTH, RANGE 65 WEST OF THE 6TH PRINCIPAL MERIDIAN



NAD 83 LATITUDE AND LONGITUDE

FIVE M E28-69HN SURFACE HOLE:
 LATITUDE: N40.46343°
 LONGITUDE: W104.67697°
 ELEVATION: 4712'
 FOOTAGE: 646' FNL, 284' FWL
 PDOP: 1.8
 QTR/QTR: NW4/NW4
 PROP LINE: 254'± WEST
BOTTOM HOLE:
 LATITUDE: N40.46406°
 LONGITUDE: W104.65137°
 FOOTAGE: 100' FNL, 2105' FWL OF SECTION 27

FIVE M E28-67HN SURFACE HOLE:
 LATITUDE: N40.46333°
 LONGITUDE: W104.67697°
 ELEVATION: 4712'
 FOOTAGE: 684' FNL, 284' FWL
 PDOP: 1.7
 QTR/QTR: NW4/NW4
 PROP LINE: 254'± WEST
BOTTOM HOLE:
 LATITUDE: N40.46076°
 LONGITUDE: W104.65134°
 FOOTAGE: 1300' FNL, 2105' FWL OF SECTION 27



DALEY LAND SURVEYING, INC. PARKER, CO. 80134 303 953 9841

MULTI WELL PAD LOCATION DRAWING
FIVE M E28-69HN & FIVE M E28-67HN

SECTION 28, TOWNSHIP 6 NORTH, RANGE 65 WEST OF THE 6TH PRINCIPAL MERIDIAN

