

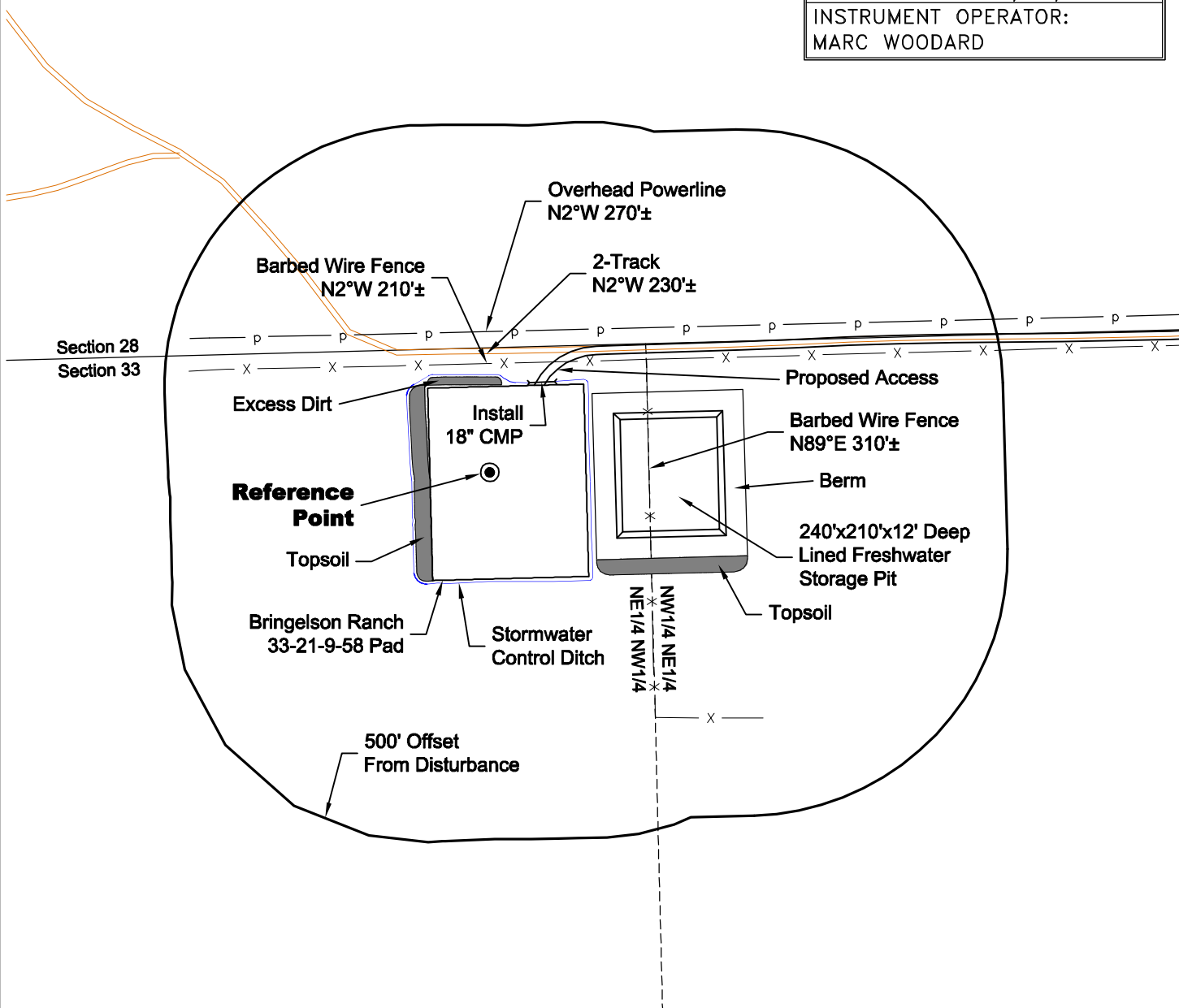
# LOCATION DRAWING

**VEGETATION:**  
DRY LAND PASTURE

**SURFACE USE:**  
GRAZING

## REFERENCE POINT

LATITUDE: 40.71416
LONGITUDE: -103.86994
FOOTAGE: 240 FNL 2354 FWL
GROUND ELEVATION: 4842.1
PDOP: 2.1 DATE: 10/28/2011
INSTRUMENT OPERATOR: MARC WOODARD



0 300 600  
Graphic Scale in Feet  
1 inch = 300 feet

DISTURBANCE ACREAGE:  
3.4± DRILLING OPERATIONS  
2.3± FRESHWATER STORAGE PIT  
1.0± INTERIM RECLAIM

**NOTE:**  
ALL PRODUCTION FACILITIES WILL BE ON PAD.

11/3/11



LAND SURVEYING AND MAPPING  
LAFAYETTE - WINTER PARK  
Ph 303 666 0379 Fx 303 665 6320

**CARRIZO OIL & GAS, INC**  
**BRINGELSON RANCH 33-21-9-58 PAD**

**NE1/4 NW1/4 SEC. 33 T9N R58W**  
**6th PM WELD COUNTY COLORADO**