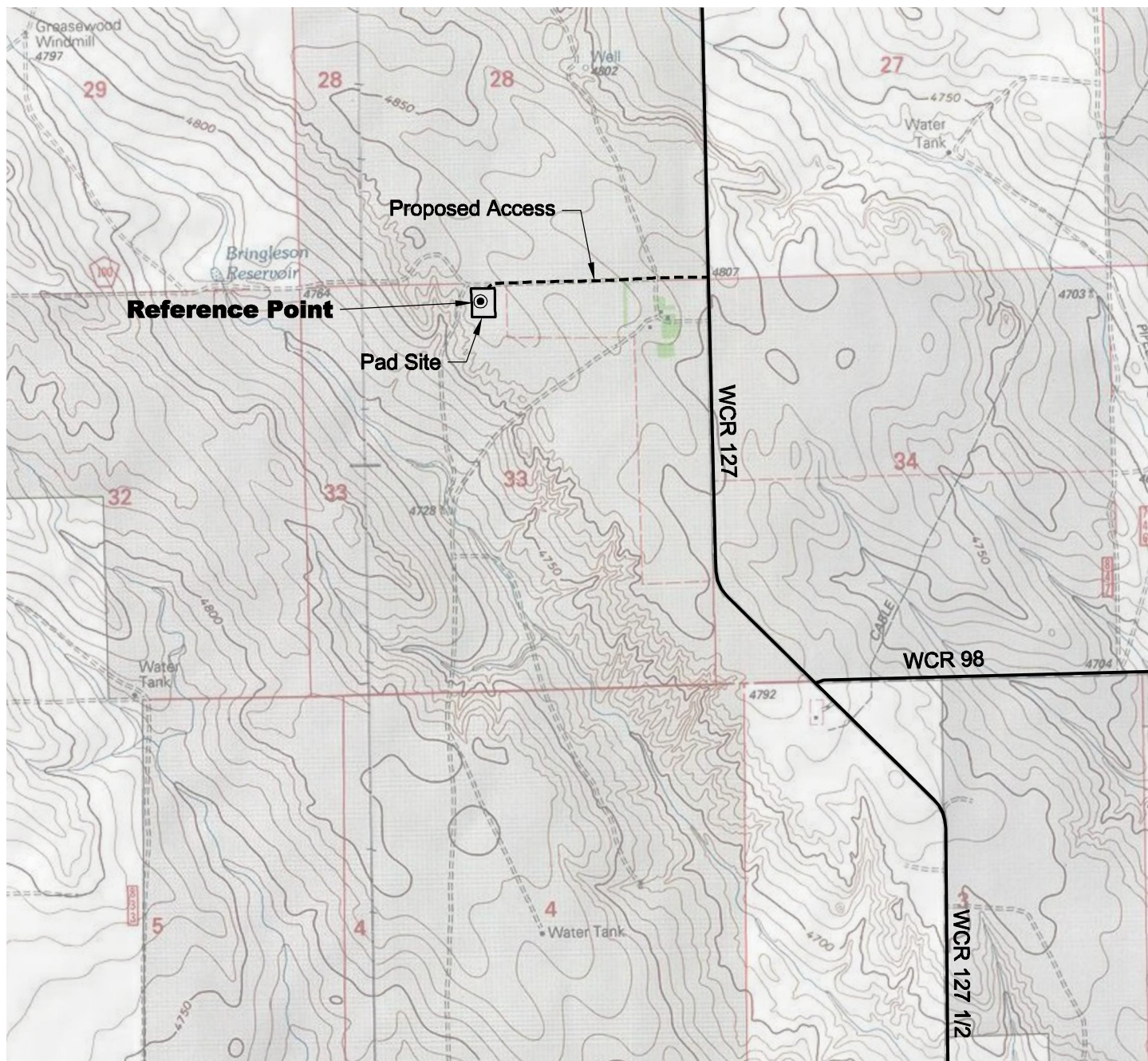


# ACCESS ROAD MAP



## DRIVING DIRECTIONS:

- MP 0.0 - Intersection of Highway 14 & WCR 129 in Raymer;  
North on WCR 129
- MP 3.8 - Road veers left, continue northwest
- MP 4.6 - Road veers right, continue north on WCR 127 1/2
- MP 6.3 - Road veers left, continue northwest
- MP 7.1 - Road veers right, continue north on WCR 127
- MP 7.8 - Left on access to Bringelson Ranch 33-21-9-58 Pad
- MP 8.4 - Bringelson Ranch 33-21-9-58 Pad

11/3/11



North

0 2000 4000

Graphic Scale in Feet  
1 inch = 2000 feet



LAND SURVEYING AND MAPPING  
LAFAYETTE - WINTER PARK  
Ph 303 666 0379 Fx 303 665 6320

**CARRIZO OIL & GAS, INC**  
**BRINGELSON RANCH 33-21-9-58 PAD**

**NE1/4 NW1/4 SEC. 33 T9N R58W**  
**6th PM WELD COUNTY COLORADO**