

Project: Weld County Colorado (NAD 83)  
Site: Sec.22, T2N, R65W  
Well: Powers X22-67HN  
Wellbore: Plan A - Rev 0 (PERMITTING PLAN ONLY)  
Design: Plan A - Rev 0 Proposal

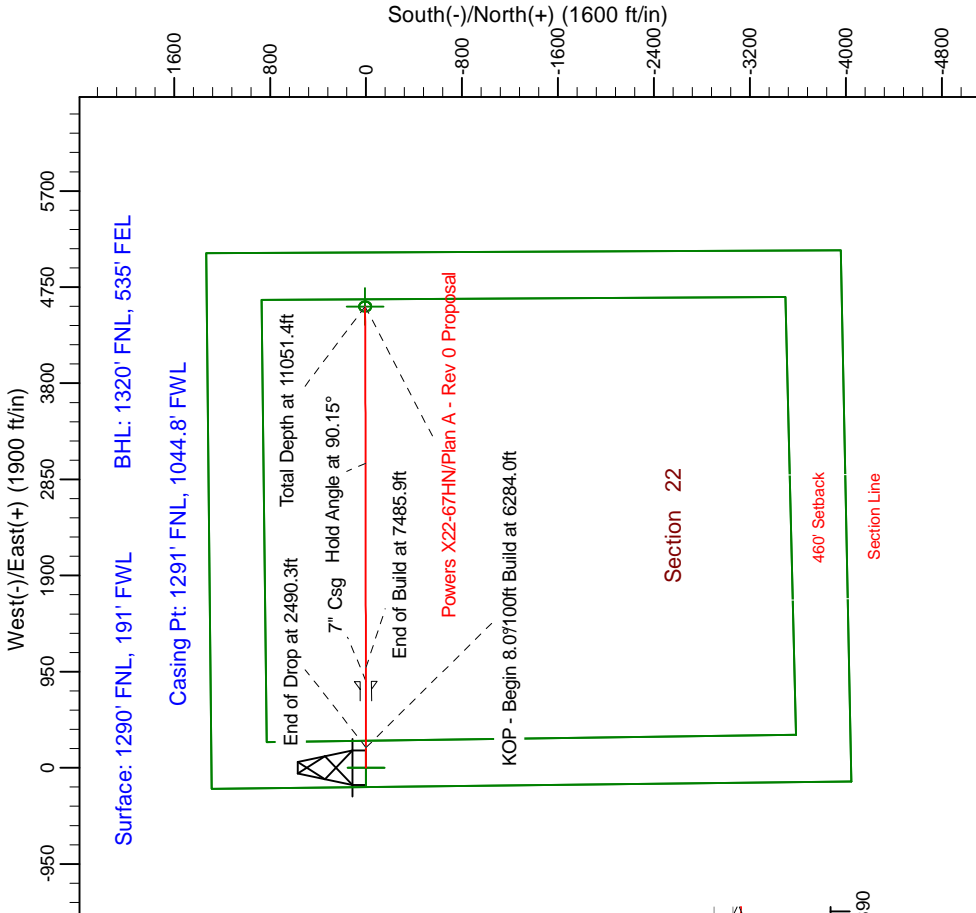
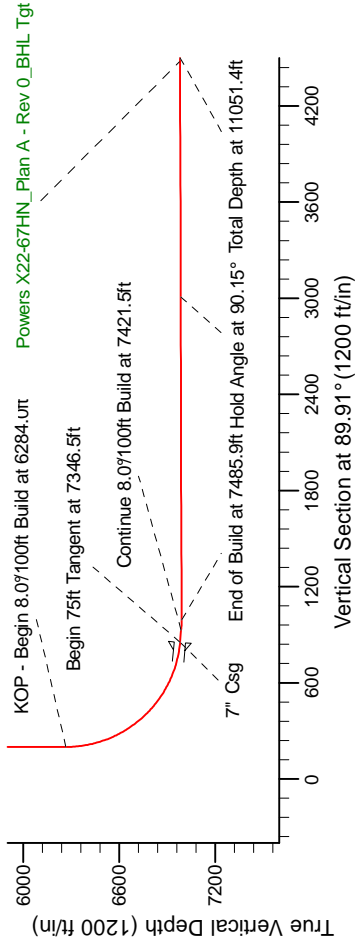
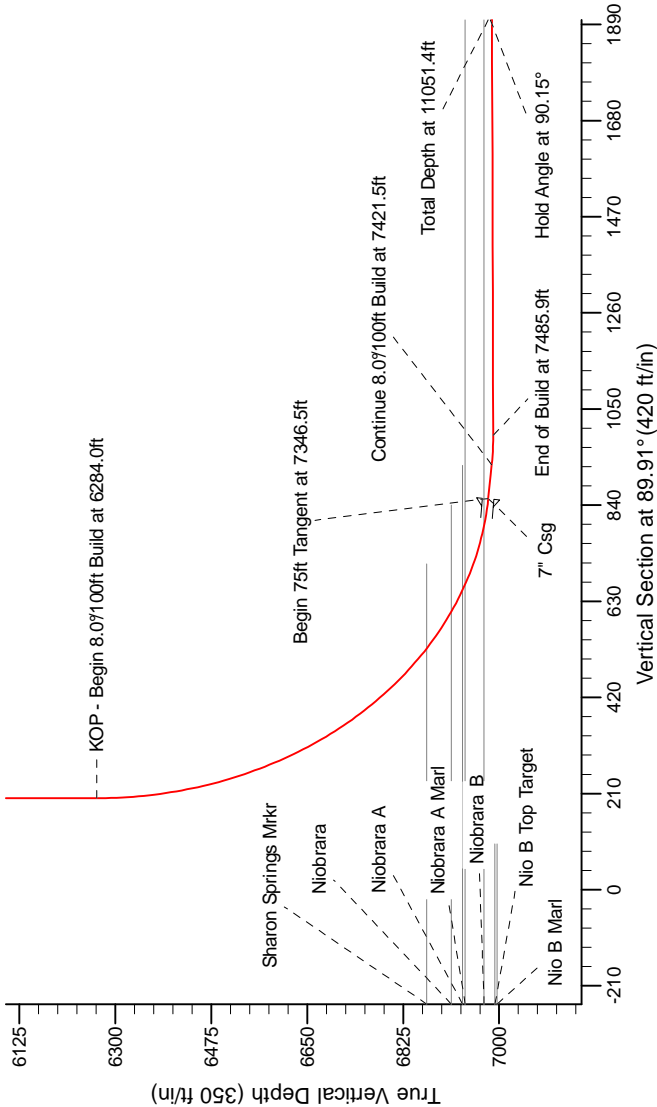
Noble Energy

HALLIBURTON  
Sperry Drilling

SECTION DETAILS

Sec	MD	Inc	Azi	TVD	+N/-S	+E/-W	Dleg	TFace	VSet	Target
1	0.0	0.00	0.00	0.0	0.0	0.0	0.00	0.00	0.0	0.0
2	1500.0	0.00	0.00	1500.0	0.0	0.0	0.00	0.00	0.0	0.0
3	1979.9	12.00	90.00	1976.4	0.0	50.1	2.50	90.00	50.1	50.1
4	2460.4	12.00	90.00	2446.4	0.0	149.9	0.00	0.00	149.9	149.9
5	2940.3	0.00	0.00	2922.8	0.0	200.0	2.50	180.00	200.0	200.0
6	6284.0	0.00	0.00	6266.5	0.0	200.0	0.00	0.00	200.0	200.0
7	7346.5	85.00	89.91	6980.0	1.0	853.8	8.00	89.91	853.8	853.8
8	7421.5	85.00	89.91	6986.5	1.1	928.5	0.00	0.00	928.5	928.5
9	7485.9	90.15	89.91	6989.2	1.2	992.8	8.00	0.00	992.8	992.8
10	11051.4	90.15	89.90	6980.0	7.2	4558.3	0.00	-103.81	4558.3	4558.3

Powers X22-67HN\_Plan A - Rev 0\_BHL Tgt-



Magnetic Model: 03F7200510  
Magnetic North is 8.1° East of True North  
Dip Angle: 86.45°  
Field Strength: 52594.6

Get More Data from the Wellbore (Self-Contained)  
Magnetic North is 8.1° East of True North (Magnetic Correction)  
To convert a Magnetic Direction to True Direction, Add 8.1° East  
To convert a True Direction to a Magnetic Direction, Add 8.1°

WELL DETAILS: Powers X22-67HN(NAD83 Geodetic System)			
Northing	Ground Level:	4882.0	Longitude
393356.99	Easting	986091.01	Latitude
		40° 7' 40.296 N	104° 39' 31.932 W
Plan: Plan A - Rev 0 Proposal (Powers X22-67HN/Plan A - Rev 0 (PERMITTING PLAN ONLY))			
Created By: Erasmo Mendoza		Date: 20/03, September 18, 2011	