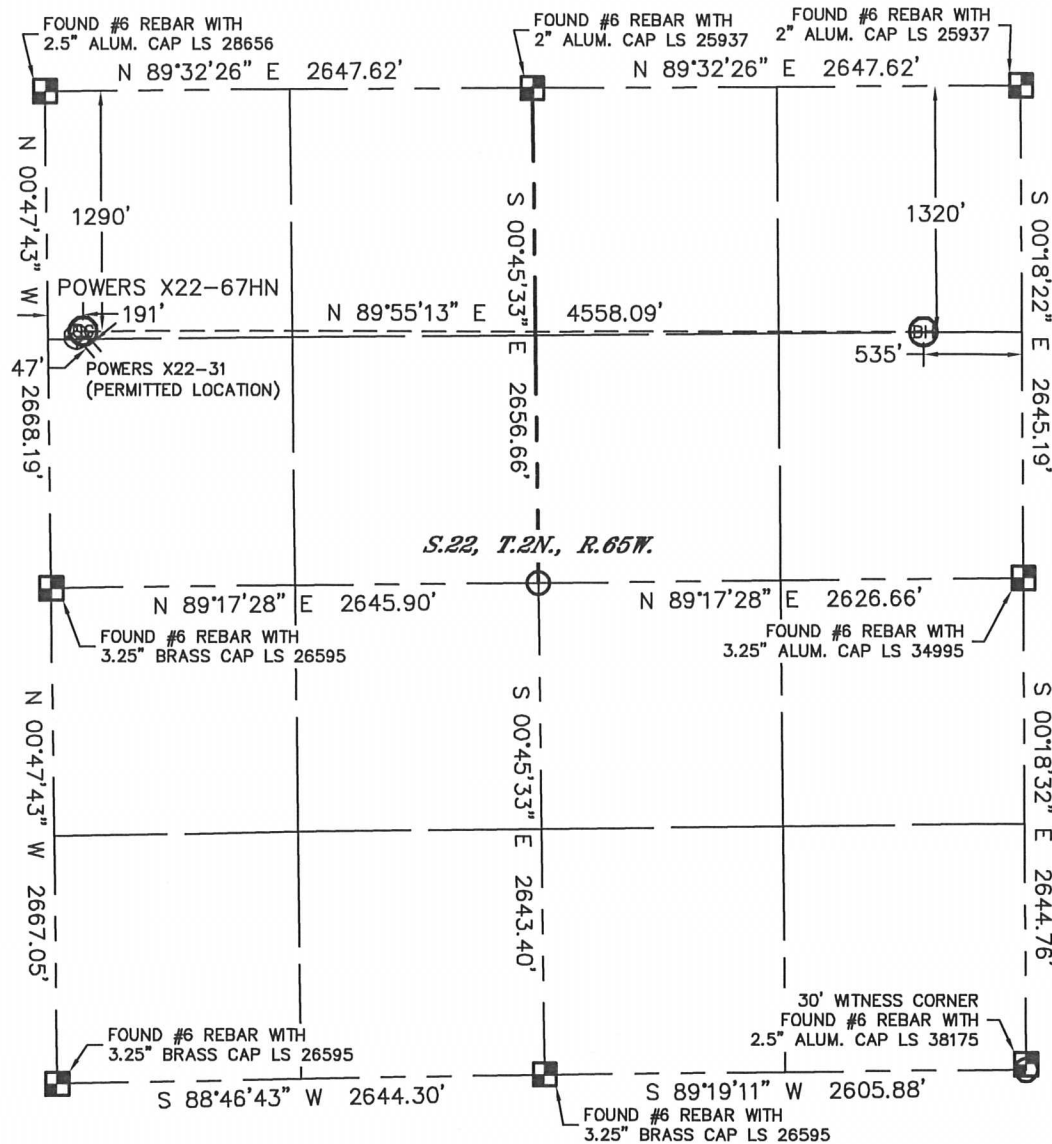


WELL LOCATION CERTIFICATE

THIS MAP DOES NOT REPRESENT A BOUNDARY SURVEY

SECTION: 22
TOWNSHIP: 2N
RANGE: 65W



In accordance with a request from Mike Rodine with Noble Energy Inc. Lat40°, Inc. has determined the surface location of the POWERS X22-67HN to be 1290' from the NORTH line and 191' from the WEST line and the bottom hole to be 1320' from the NORTH line and 535' from the EAST line as measured at right angles from the section lines of Section 22, Township 2 North, Range 65 West of the Sixth Principal Meridian, County of Weld, State of Colorado.

I hereby state that this Well Location Certificate was prepared by me, or under my direct supervision, that the fieldwork was completed on 8/5/11, for and on behalf of Noble Energy Inc. That this is not a Land Survey Plat or an Improvement Survey Plat, and that it is not to be relied upon for establishment of fence, building, or other future Improvement lines.

NOTE:

- 1) Bearings shown are Grid Bearings of the Colorado State Plane Coordinate System, North Zone, North American Datum 1983/2007. The lineal dimensions as contained herein are based upon the "U.S. Survey Foot."
- 2) Ground elevations are based on an observed GPS elevation (NAVD 1988 DATUM).
- 3) NEAREST EXISTING WELL: POWERS X22-31, 47' (PERMITTED LOCATION)
- 4) IMPROVEMENTS: See LOCATION DRAWING for all visible improvements within 400' of disturbed area.
- 5) SURFACE USE: RANGELAND
- 6) INSTRUMENT OPERATOR: ADAM KELLY

NOTE

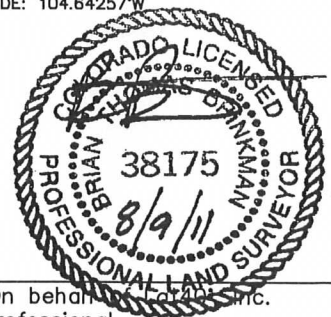
According to Colorado law, you must commence any legal action based upon any defect in this W.L.C. within three years after you discover such defect. In no event, may any action based upon any defect in this survey be commenced more than ten years after the date of the certificate shown hereon. (13-80-105 C.R.S.)

LEGEND

- = ALIQUOT MONUMENT AS DESCRIBED
- = CALCULATED POSITION

SURFACE LOCATION
LATITUDE: 40.12786°N
LONGITUDE: 104.65887°W
PDOP: 1.2
ELEV: 4882'
1/4, 1/4: NW1/4NW1/4
NEAREST PROPERTY LINE: 191' WEST

BOTTOM HOLE
LATITUDE: 40.12776°N
LONGITUDE: 104.64257°W



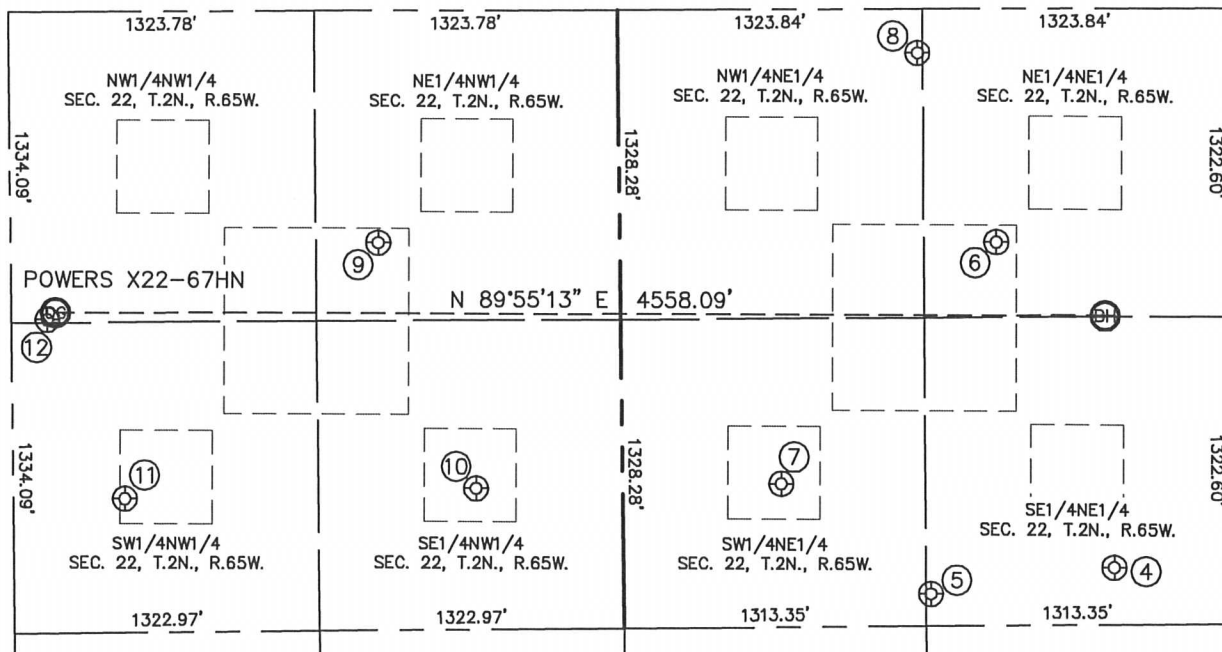
Brian T. Brinkman—On behalf of Lat40°, Inc.
Colorado Licensed Professional
Land Surveyor No. 38175

PROJECT#: 2010052

SITE SKETCH

POWERS X22-67HN

SECTION: 22
TOWNSHIP: 2N
RANGE: 65W



④

POWERS X22-8J
SE1/4NE1/4
2401' FNL
499' FEL
LAT-40.12479°N
LONG-104.64246°W
PDOP: 2.1
ELEV: 4902'

⑤

ROBERT POWERS X22-22
SE1/4NE1/4
2512' FNL
1293' FEL
LAT-40.12449°N
LONG-104.64530°W
PDOP: 1.9
ELEV: 4913'

⑥

POWERS 41-22
NE1/4NE1/4
1002' FNL
1004' FEL
LAT-40.12863°N
LONG-104.64424°W
PDOP: 1.3
ELEV: 4898'

⑦

ROBERT POWERS X22-7
SW1/4NE1/4
2036' FNL
1942' FEL
LAT-40.12580°N
LONG-104.64762°W
PDOP: 1.4
ELEV: 4917'

⑧

ROBERT POWERS X22-27
NW1/4NE1/4
189' FNL
1346' FEL
LAT-40.13086°N
LONG-104.64545°W
PDOP: 2.1
ELEV: 4895'

⑨

POWERS 21-22
NE1/4NW1/4
995' FNL
1595' FWL
LAT-40.12866°N
LONG-104.65385°W
PDOP: 2.2
ELEV: 4886'

⑩

ROBERT POWERS X22-6
SE1/4NW1/4
2052' FNL
2010' FWL
LAT-40.12576°N
LONG-104.65235°W
PDOP: 2.2
ELEV: 4888'

⑪

POWERS 12-22
SW1/4NW1/4
2090' FNL
483' FWL
LAT-40.12566°N
LONG-104.65781°W
PDOP: 1.7
ELEV: 4882'

⑫

POWERS X22-31
(PERMITTED LOCATION)
NW1/4NW1/4
1320' FNL
155' FWL
LAT-40.12777°N
LONG-104.65900°W
PDOP: 2.7
ELEV: 4882'

