

1625 Broadway
Suite 2000
Denver, CO 80202

Tel: 303.228.4000
Fax: 303.228.4280
www.nobleenergyinc.com



November 9, 2011

Colorado Oil and Gas Conservation Commission
The Chancery Building
1120 Lincoln Street, Suite 801
Denver, CO 80203

Attn: Mr. David Neslin, Director

RE: DYER USX AB 35-68-1HN
Niobrara New Drill
Township 7 North, Range 64 West, 6th P.M.
Section 34: NE/4NE/4: 352' FNL & 296' FEL (Surface Location)
Section 35: NW/4NW/4: 958' FNL & 766' FWL (Beginning of Lateral)
Section 35: NE/4NE/4: 990' FNL & 535' FEL (Bottom Hole Location)
Weld County, Colorado

Mr. Neslin:

Noble Energy, Inc. ("NEI") is planning to drill the captioned boundary well in accordance with the provisions of COGCC Rule 318A.e.

NEI's proposed wellbore spacing unit consists of the N/2, Sec. 35, T7N, R64W, creating a 320-acre wellbore spacing unit for the Niobrara formation. NEI is the only owner within the proposed wellbore spacing unit, therefore NEI hereby attests that no notice letters are required under COGCC Rule 318A(l).e.(6).

Enclosed are copies of the following documents to assist you in your review and approval of NEI's proposed APD for the captioned well:

- Map & plat illustrating proposed wellbore spacing unit.

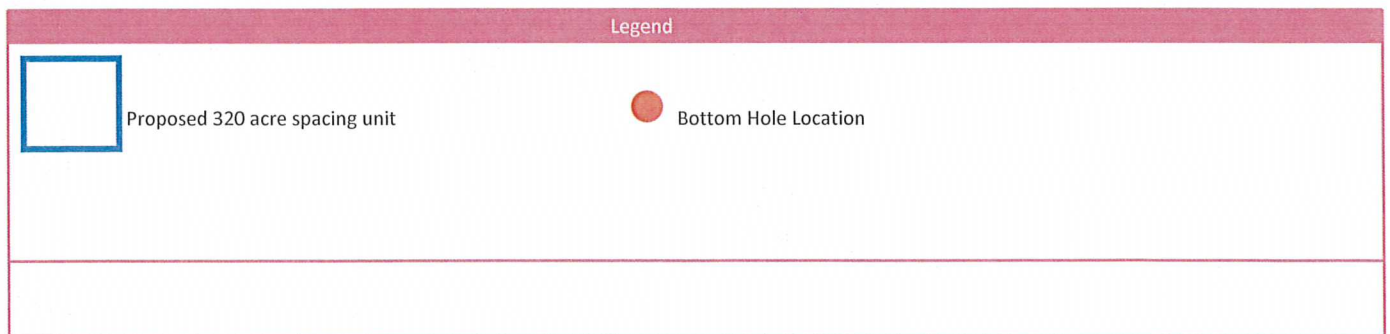
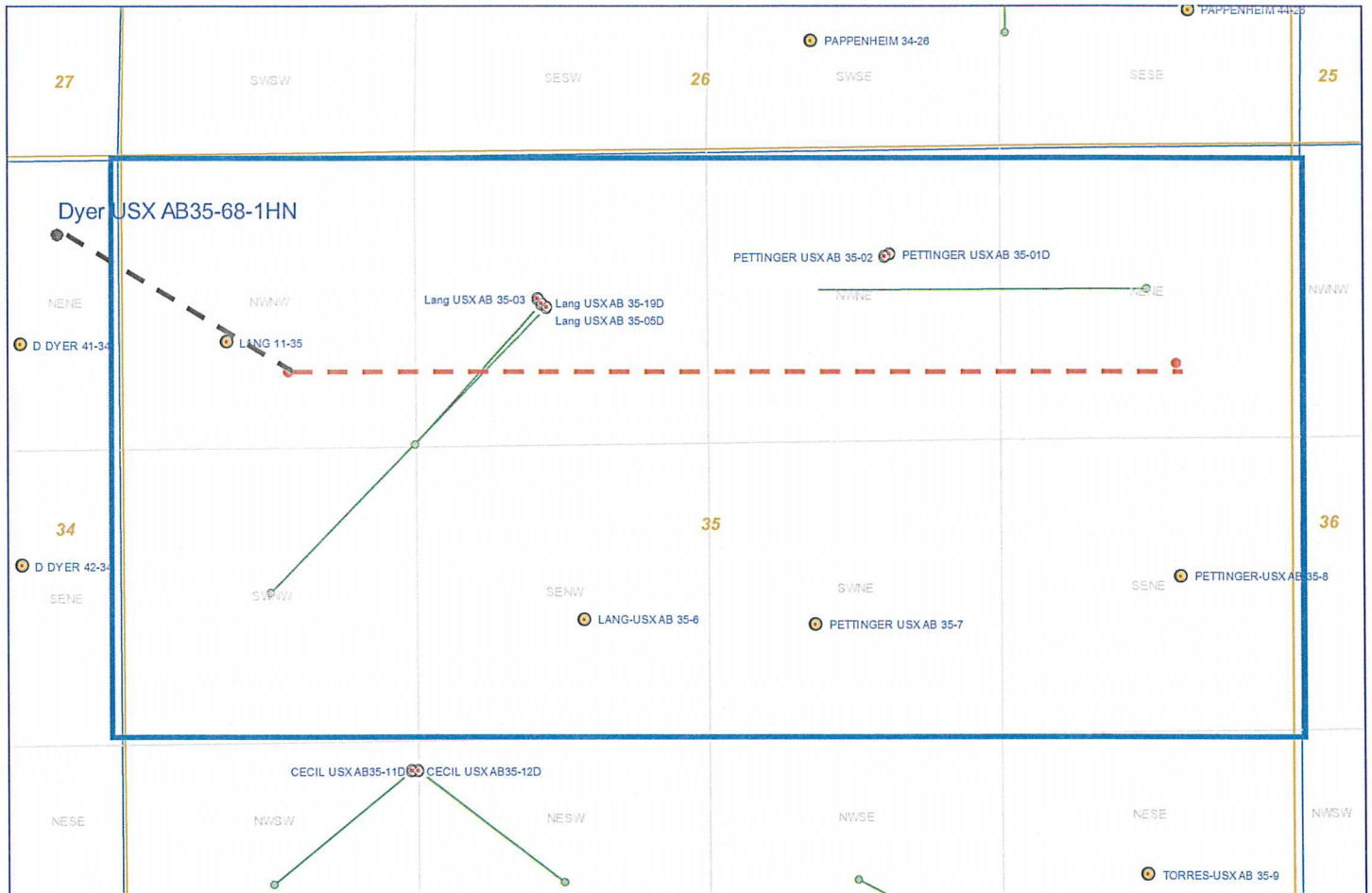
Thank you for your attention to the enclosed. NEI respectfully requests that the COGCC review the enclosed information and approve the Application for Permit to Drill the captioned well.

Sincerely,

A handwritten signature in blue ink that reads 'Mari Clark'. The signature is fluid and cursive, with a large loop at the end.

Mari Clark
Regulatory Analyst II
Noble Energy Inc.

DYER USX AB35-68-1HN
Noble Energy, Inc
N/2 Section 35, Township 7 North, Range 64 West

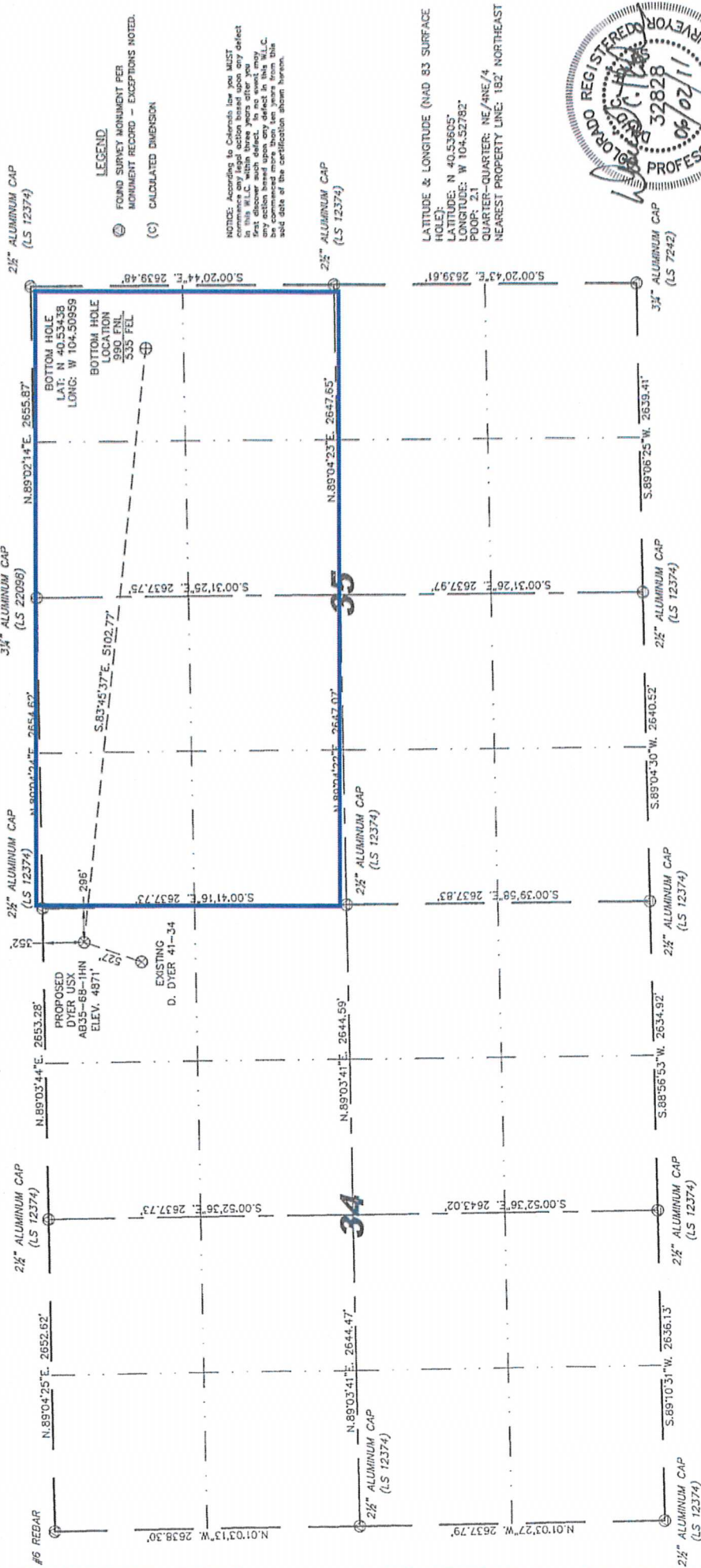


Cheyenne, Wyoming 82001

SECTIONS 34 & 35
TOWNSHIP 7 NORTH
RANGE 64 WEST

WELL LOCATION CERTIFICATE

THIS MAP DOES NOT REPRESENT A BOUNDARY SURVEY



IN ACCORDANCE WITH A REQUEST FROM NATE MCCORMELL - NOBLE ENERGY INC.
STEEL SURVEYING SERVICES, LLC HAS DETERMINED THE LOCATION OF THE OYER USX
A935-69-11N WELL TO BE 352' FNL, 296' FEL, AS MEASURED AT NINETY (90) DEGREES FROM
THE SECTION LINES, SECTION 34, TOWNSHIP 7 NORTH, RANGE 64 WEST, 6TH PRINCIPLE
MERIDIAN, WELD COUNTY, COLORADO.

- 1) BASIS OF BEARINGS FOR THIS MAP ARE BASED UPON GPS OBSERVATIONS MADE ON 05/17/2011 BETWEEN MONUMENTS LOCATED AT THE SOUTHEAST SECTION CORNER AND THE NORTHEAST SECTION CORNER OF S/40 SECTION 10 AND WITH ALL BEARINGS SHOWN HEREON RELATIVE THERETO.
- 2) COORDINATES SHOWN ARE COLORADO STATE PLANE (NORTHPOLE) MAP 83
- 3) ELEVATIONS SHOWN ARE COLORADO STATE PLANE (NORTHPOLE) DATUM.
- 4) SEE LOCATION DRAINING WEELS, TO DIVERS 41-34, 572, SOUTHWEST.
- 5) IMPROVEMENT LIMIT.
- 6) THE LOCATION FALLS IN CROP LAND.



0 1000
Scale: 1" = 1000'



David C. Holmes
Professional Land Surveyor Registration No. 32828
State of Colorado
JOB # 11086
Completed 6/02/2011