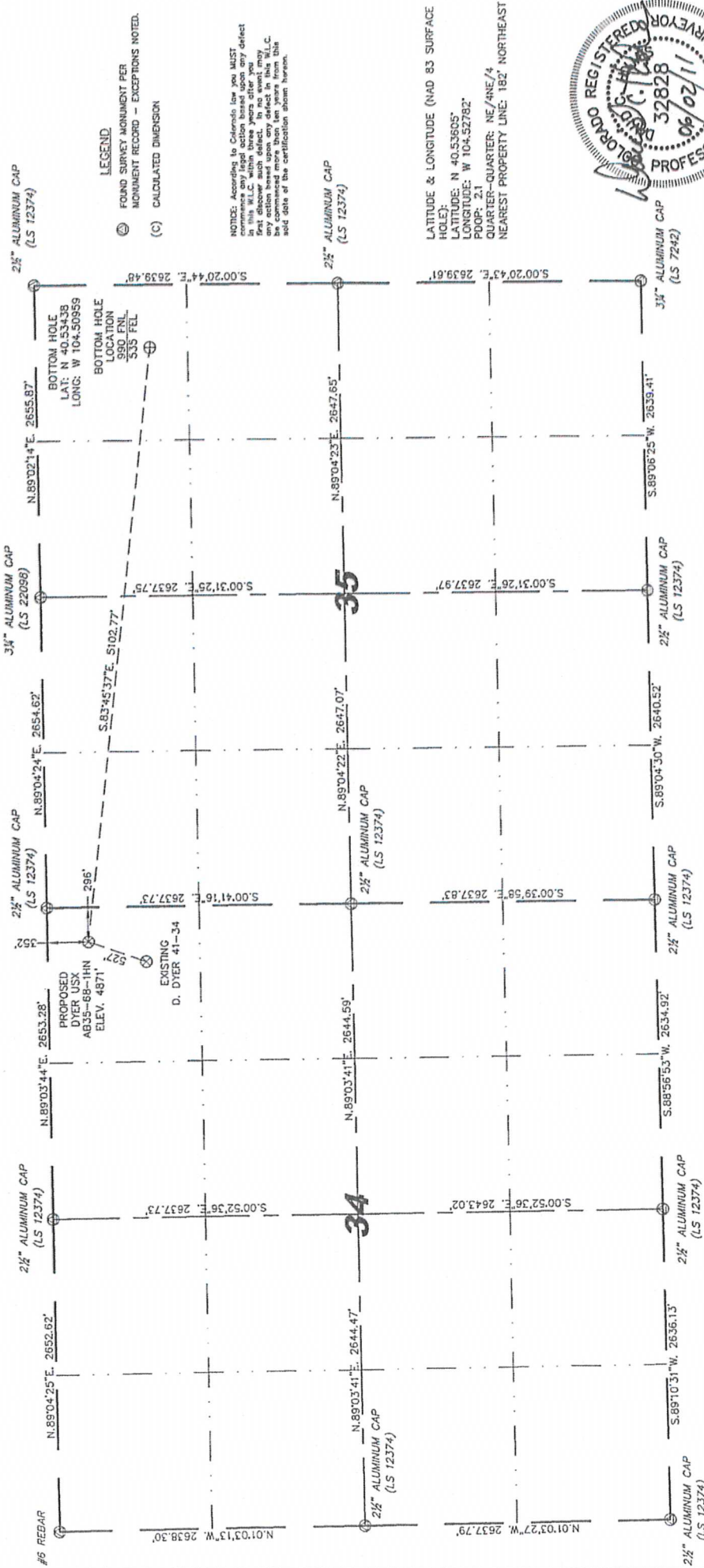


Cheyenne, Wyoming 82001

SECTIONS 34 & 35
TOWNSHIP 7 NORTH
RANGE 64 WEST

WELL LOCATION CERTIFICATE

THIS MAP DOES NOT REPRESENT A BOUNDARY SURVEY



NOTES:

- 1) BASIS OF BEARINGS FOR THIS MAP ARE BASED UPON GPS OBSERVATIONS MADE ON 05/17/2011 BETWEEN MONUMENTS LOCATED AT THE SOUTHEAST SECTION CORNER AND THE NORTHEAST SECTION CORNER OF SAO SECTION 35 AND WITH ALL BEARINGS SHOWN HEREON RELATIVE THERE TO.
- 2) COORDINATES SHOWN ARE COLORADO STATE PLANE (NORTH COE) DATUM.
- 3) ELEVATIONS ARE BASED UPON GPS OBSERVATIONS ON 08/08/2011.
- 4) ALL DISTANCES ARE GIVEN IN FEET AND DECIMALS THEREOF.
- 5) SEE LOCATION DRAWING FOR ALL IMPROVEMENTS WITHIN VISIBLE IMPROVEMENT LIMIT.
- 6) THE LOCATION FALLS IN CROP LAND.

IN ACCORDANCE WITH A REQUEST FROM NATE MCCORMELL - NOBLE ENERGY INC. SURVEYING SERVICES, LLC HAS DETERMINED THE LOCATION OF THE DYER UIC# A935-39-69-11N WELL TO BE 332' NTL, 296' FEET, AS MEASURED AT THIRTY (30) FEETERS FROM THE SECTION LINES, SECTION 7 NORTH, RANGE 6 WEST, 6TH PRINCIPAL MERIDIAN, WELD COUNTY, COLORADO.

I HEREBY CERTIFY THAT THIS WELL LOCATION CERTIFICATE WAS PREPARED BY ME, OR UNDER MY DIRECT SUPERVISION, THAT THE FIELD WORK WAS COMPLETED ON 06/01/2010 AND ON 06/01/2010. I HAVE CONDUCTED A VISUAL INSPECTION OF THE SURVEY AND AN IMPROVEMENT SURVEY, BUT THAT IT IS NOT TO BE RELIED UPON FOR ESTABLISHMENT OF FENCE, BUILDING, OR OTHER FUTURE IMPROVEMENT LINES.

0 1000

Scale: 1" = 1000'

David C. Holmes
Professional Land
Surveyor Registration No. 32828
State of Colorado

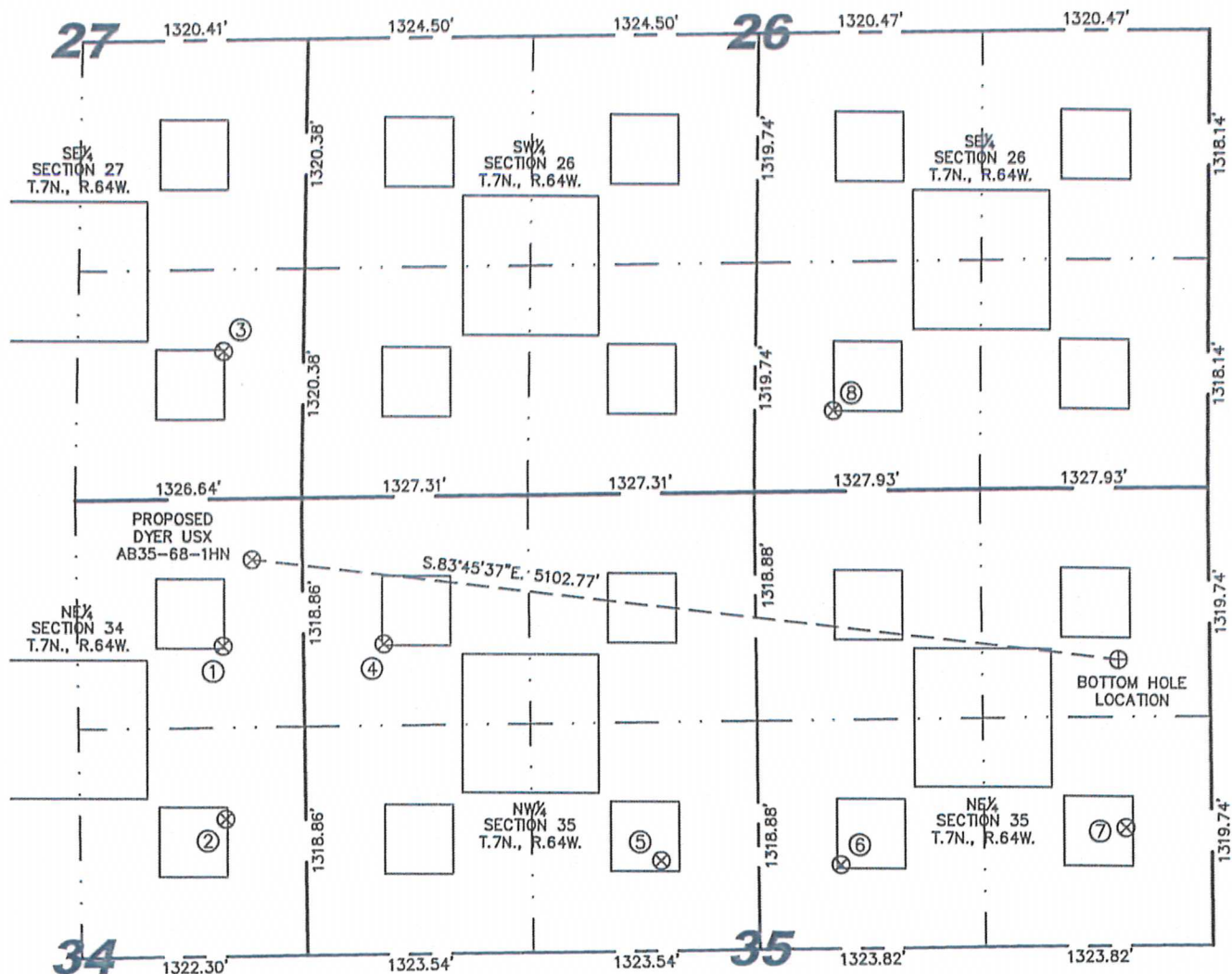
Completed 6/02/2011

JOB # 11086



SITE SKETCH - DYER USX AB35-68-1HN

SECTIONS 34
TOWNSHIP 7 NORTH
RANGE 64 WEST



①	②	③	④	⑤	⑥	⑦	⑧
D. DYER 41-34 NE/NE SEC. 34 848' FNL 471' FEL EL 4864' N 40.53469 W 104.52845 PDOP 1.9	D. DYER 42-34 SE/NE SEC. 34 1849' FNL 468' FEL EL 4841' N 40.53194 W 104.52843 PDOP 2.2	RICHTER 44-27 SE/SE SEC. 27 849' FSL 469' FEL EL 4875' N 40.53935 W 104.52836 PDOP 3.3	LANG 11-35 NW/NW SEC. 35 848' FNL 472' FWL EL 4862' N 40.53470 W 104.52505 PDOP 3.2	LANG USX AB35-6 SE/NW SEC. 35 2118' FNL 2081' FWL EL 4836' N 40.53124 W 104.51926 PDOP 3.2	PETTINGER USX AB35-7 SW/NE SEC. 35 2154' FNL 2166' FEL EL 4823' N 40.53116 W 104.51548 PDOP 3.3	PETTINGER USX AB35-8 SE/NE SEC. 35 1961' FNL 501' FEL EL 4817' N 40.53171 W 104.50949 PDOP 2.0	PAPPENHEIM 34-26 SW/SE SEC. 26 464' FSL 2190' FEL EL 4826' N 40.53834 W 104.51550 PDOP 2.5

NOTES:

- THIS SKETCH DOES NOT REPRESENT A BOUNDARY SURVEY.
- THE DATUM FOR THE LATITUDES AND LONGITUDES ON THIS SKETCH IS NAD83.

