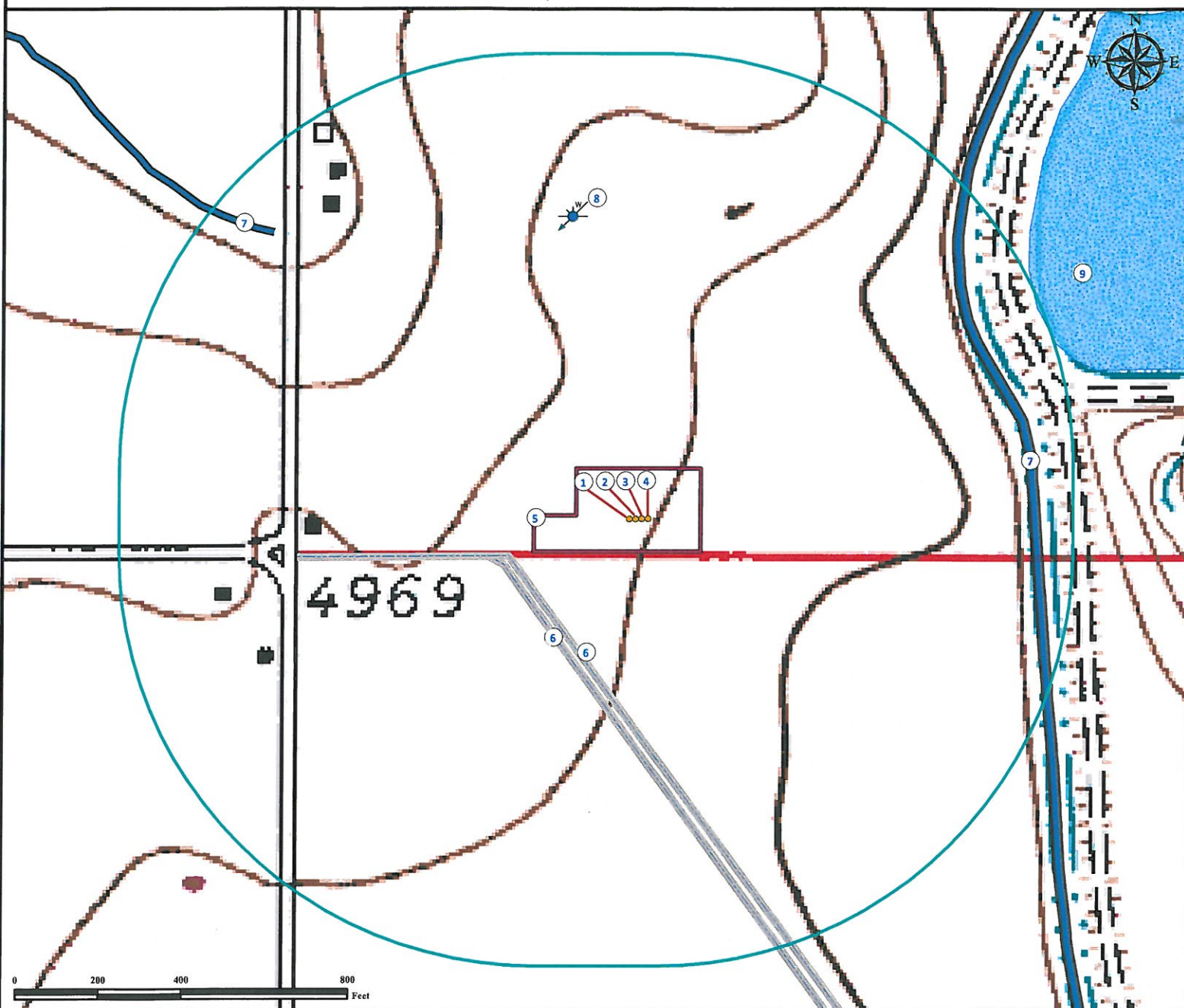


Hydrology Map

SCHLOTTHAUER 4 - 2 6

Multi Well Pad

SW¼ SW¼ SECTION 23, TOWNSHIP 7 NORTH, RANGE 67 WEST OF THE 6TH PRINCIPAL MERIDIAN



- | | |
|--|---------------------------------------|
| 1. Proposed well SCHLOTTHAUER 13-23.4. Proposed well SCHLOTTHAUER 14-23. | 7. Canals are ±944' NE and ±1113' NW. |
| 2. Proposed well SCHLOTTHAUER 4-26. 5. Operational Disturbance Area. | 8. Water well (#10831) is ±746' NW. |
| 3. Proposed well SCHLOTTHAUER 3-26. 6. Concrete Ditches are ±287' SW and ±310' SW. | 9. Lake is ±1094' NE. |

Legend

- | | | | |
|-----------------|--------------------|--------------|--------|
| ● Proposed Well | □ Disturbance Area | ⚡ Water Well | ■ Lake |
| □ 1000' Radius | — Concrete Ditch | — Canal | |

Reference Location

** All Measurements are Made from
Reference Well SCHLOTTHAUER 4-26 **
Lat: 40.552646° Long: -104.866850° (NAD83)
Elevation: 4966 Feet



Use our resources to find yours!
www.petro-fs.com
(303) 928-7128

Field Date: 08/11/2011
Drafting Date: 10/13/2011
Drafter: DMM
Checked By: BHF

Data Sources:
- TOPO courtesy USGS
- Water Wells courtesy of CDOWR
- Canals courtesy of NHD

Prepared for:

