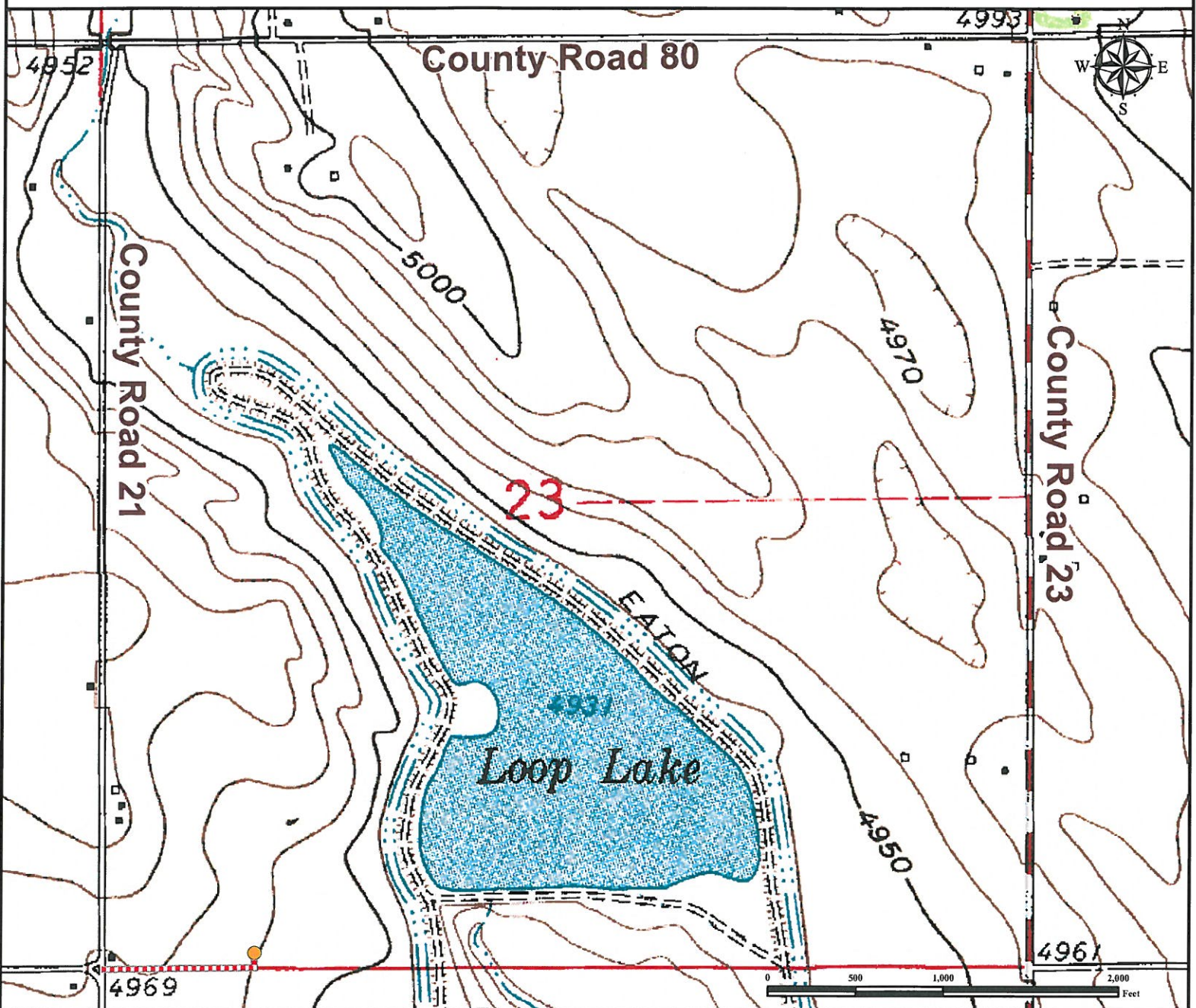


Access Road Map

SCHLOTTHAUER 4-26

Multi Well Pad

SW¼ SW¼ SECTION 23, TOWNSHIP 7 NORTH, RANGE 67 WEST OF THE 6TH PRINCIPAL MERIDIAN



From Ault, CO: From the intersection of US Highway 85 and CO Highway 14 proceed West on Highway 14 ±6.2 miles to CR 23.

Turn Left onto county road 23 and continue South ±1.0 miles.

Turn Right onto county road 80 and proceed East ±1.0 miles.

Turn Left onto county road 21 and proceed south ±1.0 miles to proposed access road.

Turn Left onto proposed access road and proceed East ±0.15 miles to Proposed Well Location.

Total distance from Ault, CO to proposed well location is ±9.35 miles to proposed well location.

Legend

● Proposed Location - - - - - Proposed Access Road

Reference Location

** All Measurements are Made from
Reference Well SCHLOTTHAUER 4-26 **

Lat: 40.552646° Long: -104.866850° (NAD83)
Elevation: 4966 Feet

Use our resources to find yours!
www.petro-fs.com
(303) 928-7128

Field Date: 08/11/2011
Drafting Date: 10/13/2011
Drafter: DMM
Checked By: BHF

Data Sources:
- TOPO courtesy of USGS

Prepared for:

 **BAYSWATER**
EXPLORATION AND PRODUCTION, LLC

