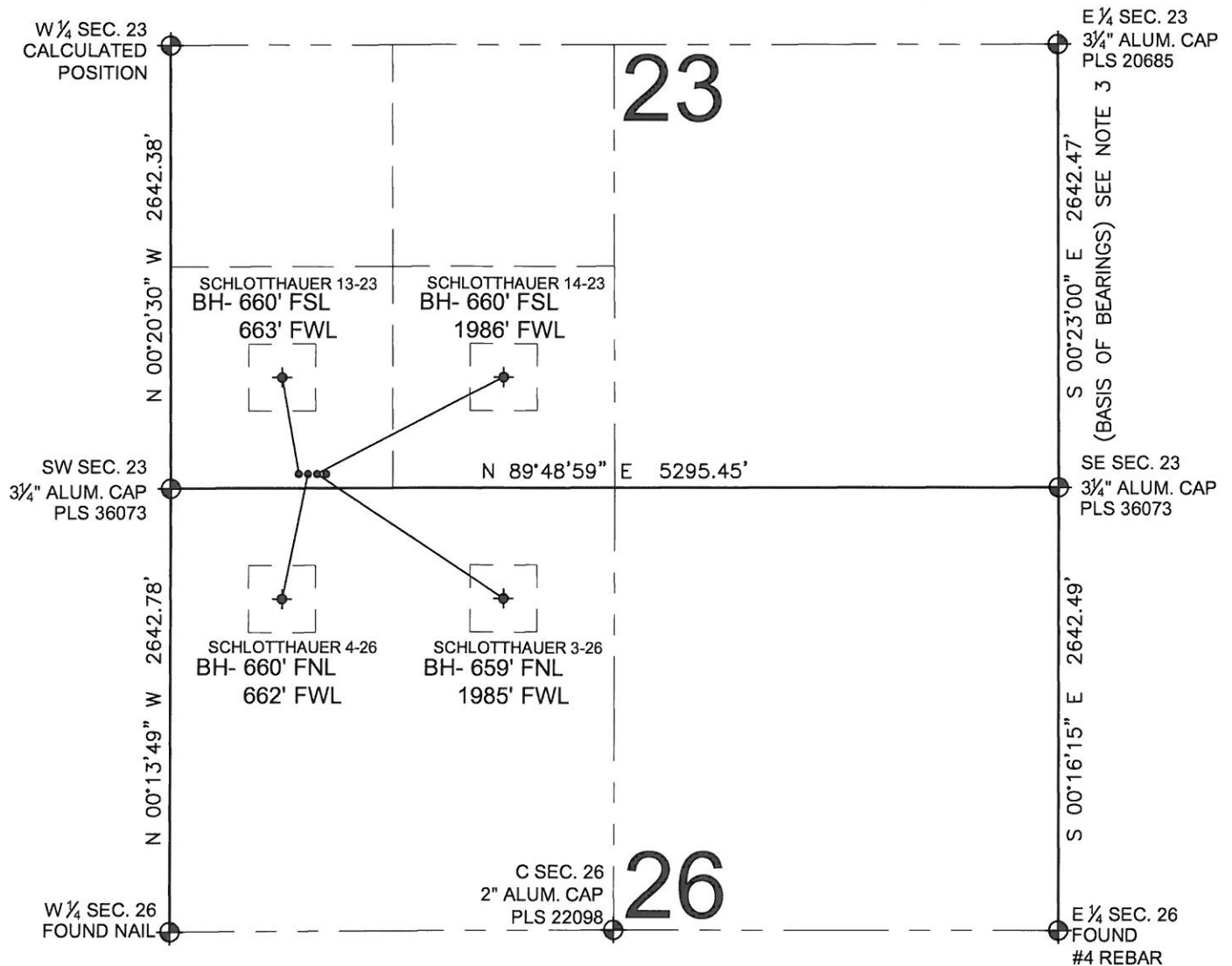


PAD DRAWING: SCHLOTTHAUER 4 PAD

SECTION 23, TOWNSHIP 7 NORTH, RANGE 67 WEST, 6TH P.M.



LEGEND

- = EXISTING MONUMENT
 = BOTTOM HOLE
 BH= BOTTOM HOLE
 = PROPOSED WELL
 = EXISTING WELL

NOTES:

- THIS FIELD SURVEY CONFORMS TO THE MINIMUM STANDARDS SET BY THE C.O.G.C.C., RULE NO. 215
- HORIZONTAL POSITIONS AND ORTHOMETRIC ELEVATIONS SHOWN AT THE WELL HEAD, ARE BASED ON GPS-RTK POSITIONS DERIVED FROM MINIMUM 2-HOUR STATIC OBSERVATIONS CORRECTED BY THE NATIONAL GEODETIC SURVEY ONLINE POSITIONING USER SERVICE, O.P.U.S. DATUM: HORIZONTAL = NAD83/2007, VERTICAL = NAVD88
- THE BASIS OF BEARINGS ARE STATE PLANE COORDINATE SYSTEM GRID BEARINGS SHOWN HEREON BETWEEN THE DESCRIBED THE MONUMENTS SHOWN HEREON.
- GRID DISTANCES ARE SHOWN, AS MEASURED IN THE FIELD, WITH TIES TO WELLS MEASURED PERPENDICULAR TO SECTION LINES.

NOTES:

- SCHLOTTHAUER 13-23 TO BE AT 85' FSL, 841' FWL.
 BOTTOM HOLE AT 660' FSL & 663' FWL.
 SCHLOTTHAUER 4-26 TO BE AT 85' FSL, 856' FWL.
 BOTTOM HOLE AT 660' FNL & 662' FWL.
 SCHLOTTHAUER 3-26 TO BE AT 85' FSL, 871' FWL.
 BOTTOM HOLE AT 659' FNL & 1985' FWL.
 SCHLOTTHAUER 14-23 TO BE AT 85' FSL, 886' FWL.
 BOTTOM HOLE AT 660' FSL & 1986' FWL.

PREPARED BY:

PFS

Petroleum Field Services, LLC
1801 W. 13th Ave.
Denver, CO 80204



BAYSWATER EXPLORATION & PRODUCTION, LLC

FIELD DATE:
08-11-11

DRAWING DATE:
09-01-11

BY:
SMF

PAD NAME:
SCHLOTTHAUER 4 PAD

SURFACE LOCATION:
WELD COUNTY, COLORADO
SW 1/4 SW 1/4, SEC. 23, T7N, R67W, 6TH P.M.

