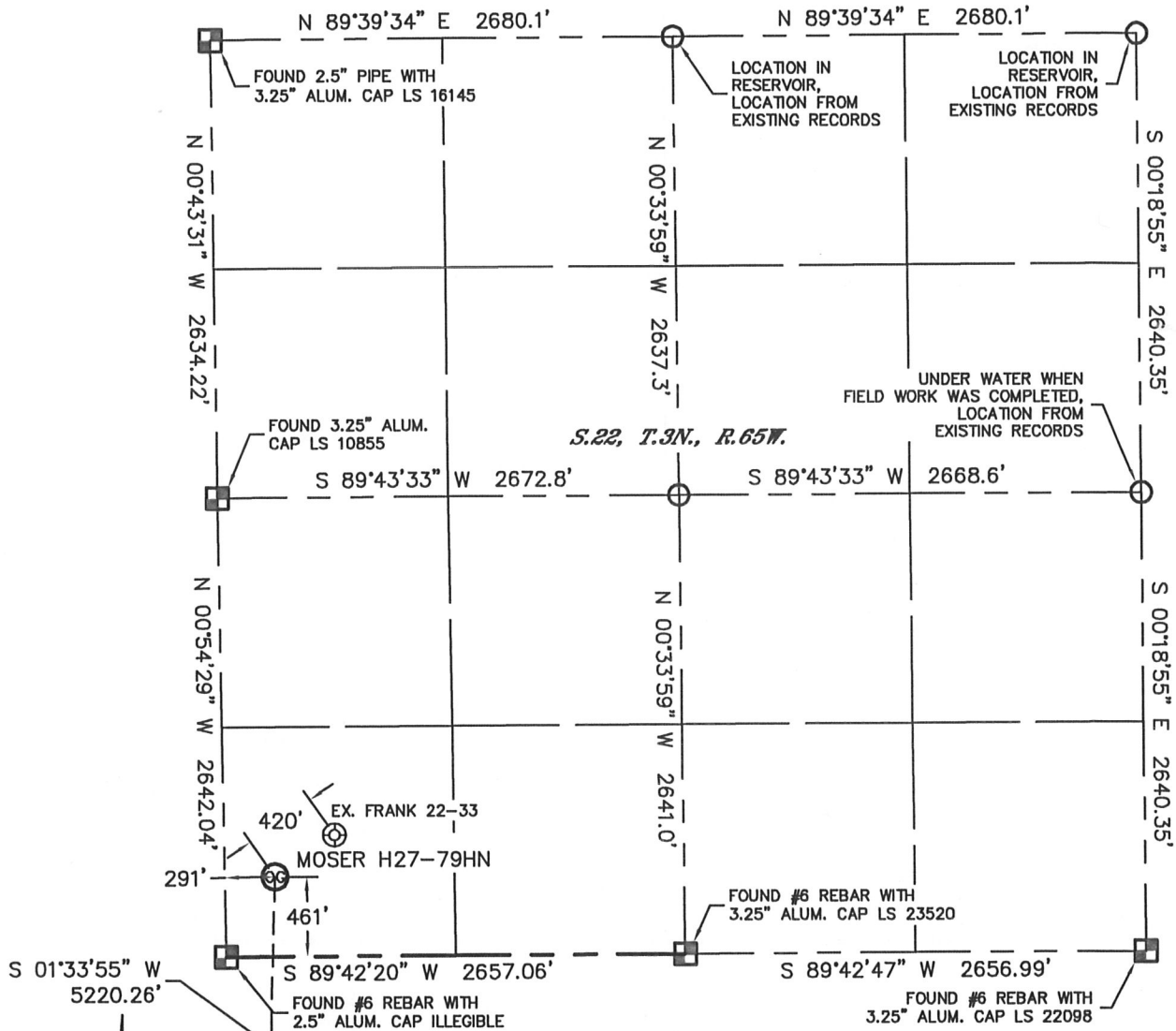


# WELL LOCATION CERTIFICATE

THIS MAP DOES NOT REPRESENT A BOUNDARY SURVEY

SECTION: 22  
TOWNSHIP: 3N  
RANGE: 65W



In accordance with a request from Scott Lewis with Noble Energy Inc. Lat40°, Inc. has determined the surface location of the MOSER H27-79HN to be 461' from the SOUTH line and 291' from the WEST line as measured at right angles from the section lines of Section 22, Township 3 North, Range 65 West and the bottom hole to be 535' from the SOUTH line and 75' from the WEST line as measured at right angles from the section lines of Section 27, Township 3 North, Range 65 West of the Sixth Principal Meridian, County of Weld, State of Colorado.

I hereby state that this Well Location Certificate was prepared by me, or under my direct supervision, that the fieldwork was completed on 8/17/2011, for and on behalf of Noble Energy Inc. That this is not a Land Survey Plat or an Improvement Survey Plat, and that it is not to be relied upon for establishment of fence, building, or other future improvement lines.

**NOTE:**

- 1) Bearings shown are Grid Bearings of the Colorado State Plane Coordinate System, North Zone, North American Datum 1983/2007. The lineal dimensions as contained herein are based upon the "U.S. Survey Foot."
- 2) Ground elevations are based on an observed GPS elevation (NAVD 1988 DATUM).
- 3) NEAREST EXISTING WELL: FRANK 22-33, 420'
- 4) IMPROVEMENTS: See LOCATION DRAWING for all visible improvements within 400' of disturbed area.
- 5) SURFACE USE: PIVOT CORNER
- 6) INSTRUMENT OPERATOR: BRIAN BRINKMAN

**NOTE**

According to Colorado law, you must commence any legal action based upon any defect in this W.L.C. within three years after you discover such defect. In no event, may any action based upon any defect in this survey be commenced more than ten years after the date of the certificate shown hereon. (13-80-105 C.R.S.)

**LEGEND**

- = ALIQUOT MONUMENT AS DESCRIBED
- = CALCULATED POSITION

**SURFACE LOCATION**  
LATITUDE: 40.20495°N  
LONGITUDE: 104.65824°W  
PDOP: 1.4  
ELEV: 4813'  
1/4, 1/4: SW1/4SW1/4  
NEAREST PROPERTY LINE: 291' W

**BOTTOM HOLE**  
LATITUDE: 40.19064°N  
LONGITUDE: 104.65892°W

**SHEET 1 OF 2**

Brian T. Brinkman—On behalf of Lat40° Inc.  
Colorado Licensed Professional  
Land Surveyor No. 38175

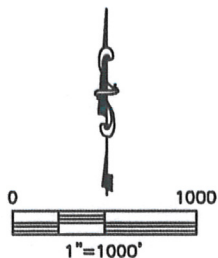
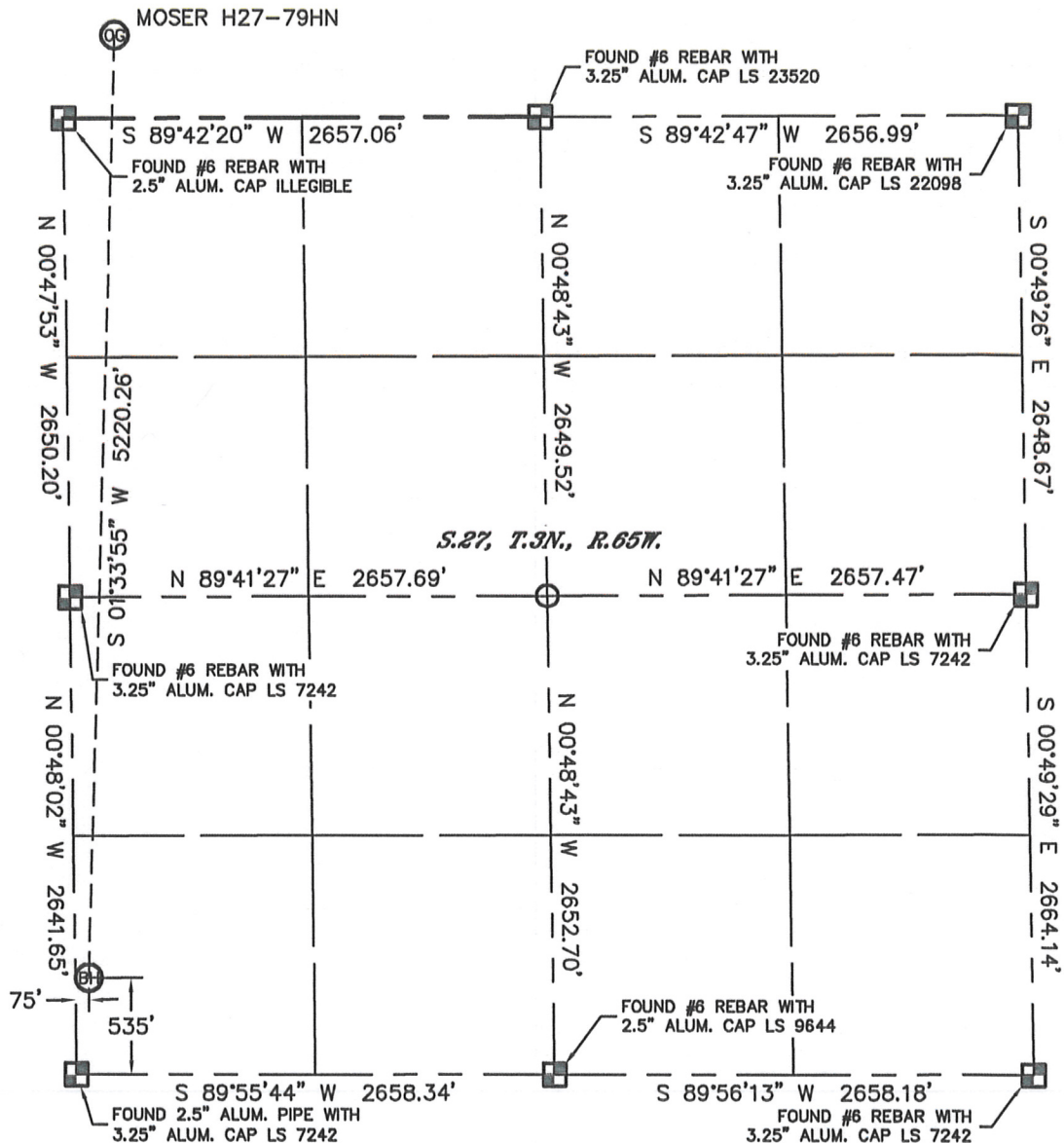
PROJECT#: 2011203



# WELL LOCATION CERTIFICATE

THIS MAP DOES NOT REPRESENT A BOUNDARY SURVEY



SECTION: 22  
TOWNSHIP: 3N  
RANGE: 65W



## NOTE

According to Colorado law, you must commence any legal action based upon any defect in this W.L.C. within three years after you discover such defect. In no event, may any action based upon any defect in this survey be commenced more than ten years after the date of the certificate shown hereon. (13-80-105 C.R.S.)

## LEGEND

-  = ALIQUOT MONUMENT AS DESCRIBED
-  = CALCULATED POSITION

## SHEET 2 OF 2

Brian T. Brinkman—On behalf of Lat40°, Inc.  
Colorado Licensed Professional  
Land Surveyor No. 38175

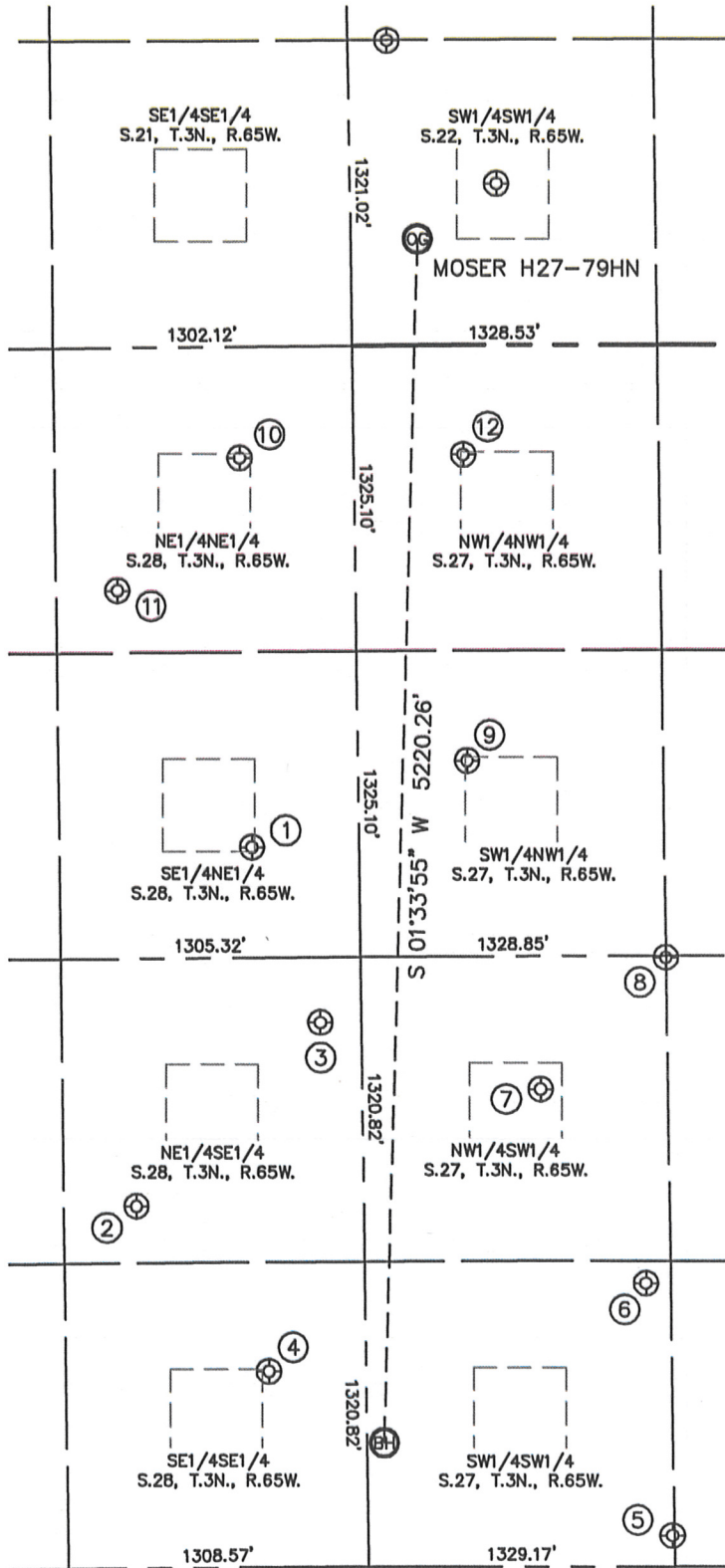
PROJECT#: 2011203



# SITE SKETCH

## MOSER H27-79HN

SECTION: 22  
TOWNSHIP: 3N  
RANGE: 65W



- |  |  |  |
|--|--|--|
| ①<br>MOSER 28-B<br>SE1/4NE1/4<br>2169' FNL<br>466' FEL<br>LAT-40.19774°N<br>LONG-104.66090°W<br>PDOP:1.6<br>ELEV: 4824'        | ②<br>CANNON 3-28 1<br>NE1/4SE1/4<br>1570' FSL<br>990' FEL<br>LAT-40.19348°N<br>LONG-104.66275°W<br>PDOP:1.3<br>ELEV: 4829'   | ③<br>MOSER H27-32<br>NE1/4SE1/4<br>2360' FSL<br>179' FEL<br>LAT-40.19565°N<br>LONG-104.65986°W<br>PDOP:1.2<br>ELEV: 4825'    |
| ④<br>CANNON LAND 28-16J<br>SE1/4SE1/4<br>849' FSL<br>422' FEL<br>LAT-40.19150°N<br>LONG-104.66071°W<br>PDOP:2.0<br>ELEV: 4831' | ⑤<br>RITCHEY H34-29<br>SW1/4SW1/4<br>135' FSL<br>1320' FWL<br>LAT-40.18951°N<br>LONG-104.65446°W<br>PDOP:1.2<br>ELEV: 4834'  | ⑥<br>RITCHEY H27-25<br>SW1/4SW1/4<br>1228' FSL<br>1221' FWL<br>LAT-40.19251°N<br>LONG-104.65483°W<br>PDOP:1.7<br>ELEV: 4822' |
| ⑦<br>RITCHEY H27-12<br>NW1/4SW1/4<br>2069' FSL<br>775' FWL<br>LAT-40.19483°N<br>LONG-104.65644°W<br>PDOP:2.5<br>ELEV: 4821'    | ⑧<br>RITCHEY H27-20<br>NW1/4SW1/4<br>2640' FSL<br>1328' FWL<br>LAT-40.19638°N<br>LONG-104.65447°W<br>PDOP:2.3<br>ELEV: 4819' | ⑨<br>RITCHEY H27-5<br>SW1/4NW1/4<br>1801' FNL<br>476' FWL<br>LAT-40.19674°N<br>LONG-104.65754°W<br>PDOP:1.7<br>ELEV: 4817'   |
| ⑩<br>MOSER H28-1<br>NE1/4NE1/4<br>481' FNL<br>497' FEL<br>LAT-40.20237°N<br>LONG-104.66104°W<br>PDOP:1.3<br>ELEV: 4814'        | ⑪<br>MOSER 41-28<br>NE1/4NE1/4<br>1052' FNL<br>1036' FEL<br>LAT-40.20080°N<br>LONG-104.66296°W<br>PDOP:1.9<br>ELEV: 4824'    | ⑫<br>RITCHEY H27-4<br>NW1/4NW1/4<br>473' FNL<br>477' FWL<br>LAT-40.20239°N<br>LONG-104.65755°W<br>PDOP:3.6<br>ELEV: 4814'    |

