

Noble Energy

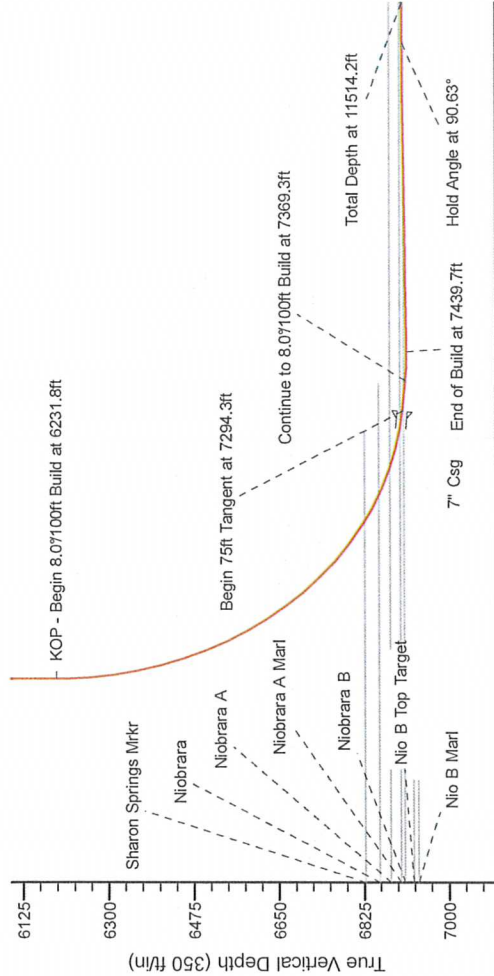
Project: Weld County Colorado (NAD 83)
 Site: Sec.22, T3N, R65W
 Well: MOSER H27-79HN
 Wellbore: Plan A - Rev 0 (PERMITTING PLAN ONLY)
 Design: Plan A - Rev 0 Proposal

HALLIBURTON
 Sperry Drilling

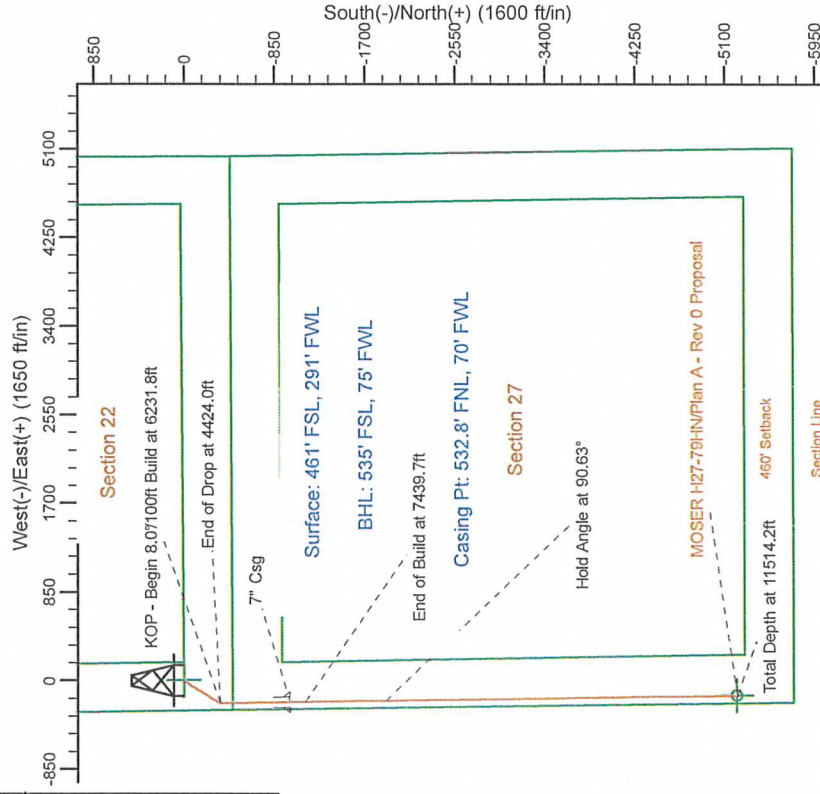
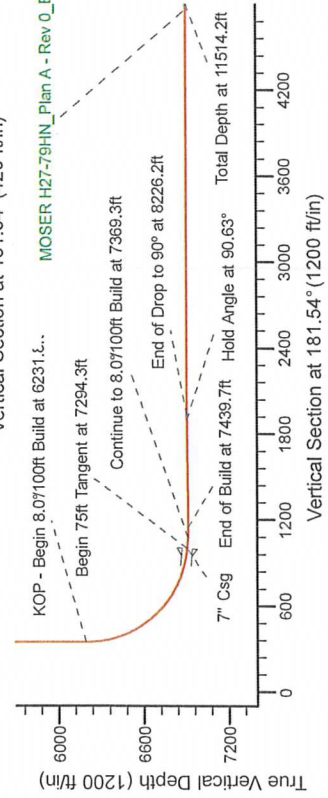
SECTION DETAILS

Sec	MD	Inc	Azi	TVD	+N/-S	+E/-W	Dleg	TFace	VSECT	Target
1	0.0	0.00	0.00	0.0	0.0	0.0	0.00	0.00	0.0	0.0
2	2000.0	0.00	0.00	2000.0	0.0	0.0	0.00	0.00	0.0	0.0
3	2479.9	12.00	212.28	2476.4	-42.3	-26.7	2.50	212.28	43.0	43.0
4	3944.1	12.00	212.28	3938.6	-259.7	-189.3	0.00	0.00	304.7	304.7
5	4424.0	0.00	0.00	4385.0	-342.0	-216.0	2.50	180.00	347.7	347.7
6	6231.8	0.00	0.00	6192.8	-342.0	-216.0	0.00	0.00	1000.9	1000.9
7	7294.3	85.00	179.11	6906.3	-995.7	-205.8	8.00	179.11	1075.5	1075.5
8	7369.3	85.00	179.11	6912.8	-1070.4	-204.7	0.00	0.00	1145.8	1145.8
9	7439.7	90.63	179.11	6907.2	-1895.6	-191.9	0.00	0.00	1900.0	1900.0
10	8194.7	90.63	179.11	6907.2	-1895.6	-191.9	0.00	0.00	1931.5	1931.5
11	8226.2	90.00	179.11	6907.0	-1927.1	-191.4	2.00	180.00	5216.6	5216.6
12	11514.2	90.00	179.11	6907.0	-5214.7	-140.3	0.00	0.00		

MOSER H27-79HN_Plan A - Rev 0_BHL Tgt-



Vertical Section at 181.54° (420 ft/in)
 MOSER H27-79HN_Plan A - Rev 0_BHL Tgt



WELL DETAILS: MOSER H27-79HN(NAD83 Geocentric System)

Ground Level: 4813.0
 Northing: 401916.66
 Easting: 986063.45
 Latitude: 40° 12' 17.820 N
 Longitude: 104° 39' 29.664 W

Plan: Plan A - Rev 0 Proposal (MOSER H27-79HN_Plan A - Rev 0 (PERMITTING PLAN ONLY))

Created By: Erasmo Mendoza Date: 11/07, September 28 2011

