

# EOG RESOURCES, INC.

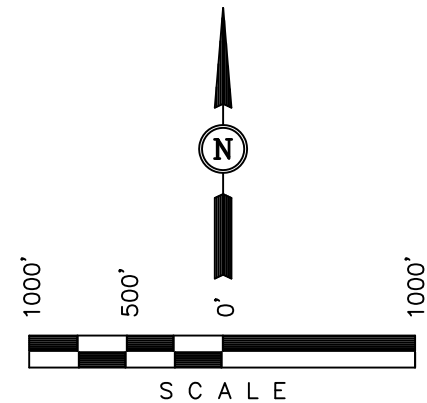
Well location, (As-Built) SIMBA #01-06, located as shown in Lot 2 of Section 6, T11N, R62W, 6th P.M., Weld County, Colorado.

## BASIS OF ELEVATION

SPOT ELEVATION AT THE NORTHEAST CORNER OF SECTION 1, T11N, R63W, 6th P.M., TAKEN FROM THE HEREFORD QUADRANGLE, COLORADO, WELD COUNTY, 7.5 MINUTE QUAD. (TOPOGRAPHIC MAP) PUBLISHED BY THE UNITED STATES DEPARTMENT OF THE INTERIOR, GEOLOGICAL SURVEY. SAID ELEVATION IS MARKED AS BEING 5352 FEET.

## BASIS OF BEARINGS

BASIS OF BEARINGS IS A G.P.S. OBSERVATION.



## CERTIFICATE

THIS IS TO CERTIFY THAT THE ABOVE PLAT WAS PREPARED FROM FIELD NOTES OF ACTUAL SURVEYS MADE BY ME OR UNDER MY SUPERVISION AND THAT THE SAME ARE TRUE AND CORRECT TO THE BEST OF MY KNOWLEDGE AND BELIEF.

REGISTERED LAND SURVEYOR  
REGISTRATION NO. 17492  
STATE OF COLORADO

**UINTAH ENGINEERING & LAND SURVEYING**  
85 SOUTH 200 EAST - VERNAL, UTAH 84078  
(435) 789-1017

SCALE 1" = 1000'	DATE SURVEYED: 11-07-11	DATE DRAWN: 11-07-11
PARTY J.H. C.C.	REFERENCES G.L.O. PLAT	
WEATHER COOL	FILE EOG RESOURCES, INC.	

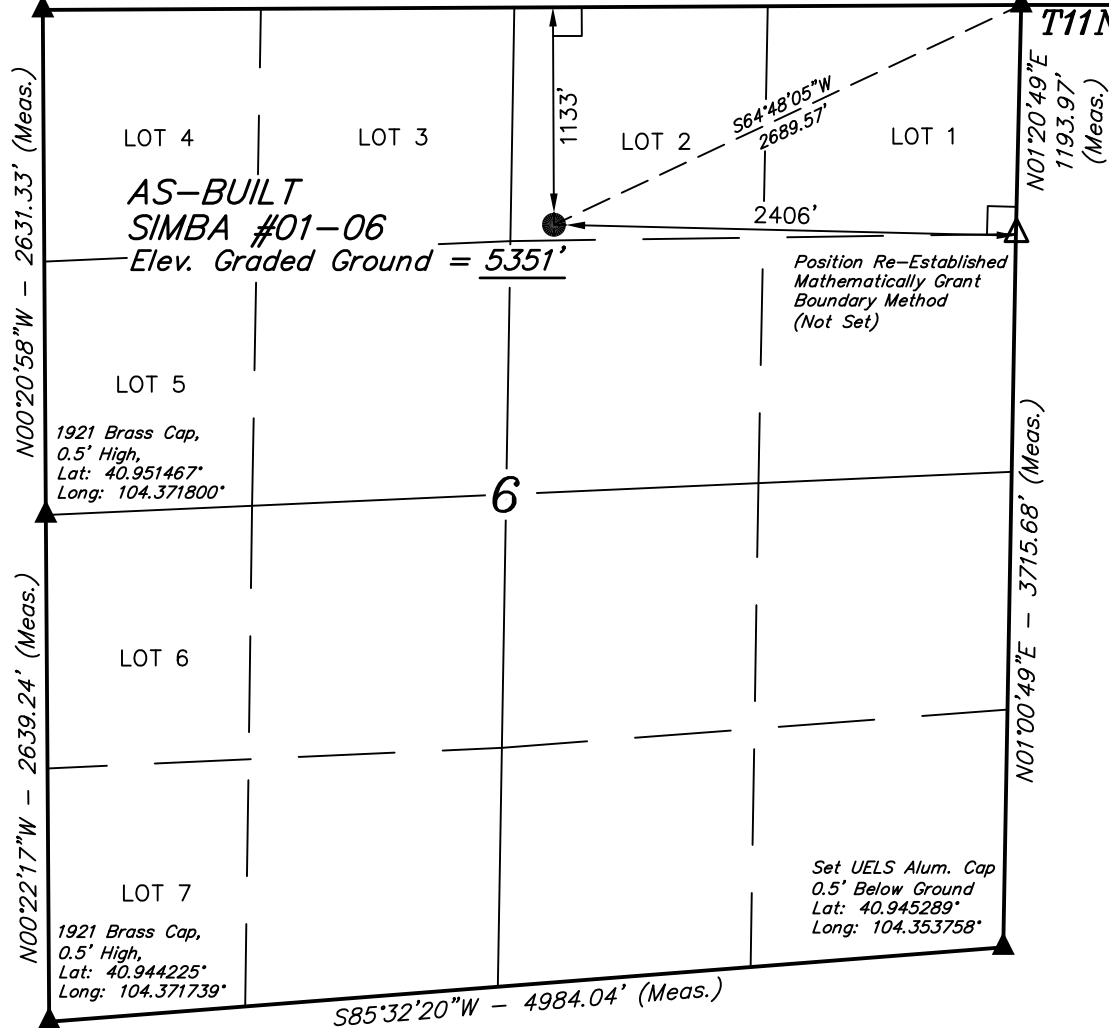
**T11N, R62W, 6th P.M.**

1921 Brass Cap,  
0.7' High,  
Lat: 40.958686°  
Long: 104.371858°

Set UELS Alum. Cap  
1.2' Below Ground  
Lat: 40.958614°  
Long: 104.353269°

N89°42'29"E - 5095.97' (Meas.)

T12N  
T11N



**AS-BUILT  
SIMBA #01-06**

Elev. Graded Ground = 5351'

Position Re-Established  
Mathematically Grant  
Boundary Method  
(Not Set)

6

R  
63  
W

S85°32'20"W - 4984.04' (Meas.)

PDOP = 2.6

<b>NAD 83 (SURFACE LOCATION)</b>
LATITUDE = 40°57'20.22" (40.955617)
LONGITUDE = 104°21'44.00" (104.362222)
<b>NAD 27 (SURFACE LOCATION)</b>
LATITUDE = 40°57'20.28" (40.955633)
LONGITUDE = 104°21'42.17" (104.361714)
<b>STATE PLANE NAD 83 (COLORADO NORTH)</b>
SURFACE LOCATION
N: 1593001.302 E: 3314276.698
<b>STATE PLANE NAD 27 (COLORADO NORTH)</b>
SURFACE LOCATION
N: 592998.988 E: 2314426.097

## LEGEND:

- └─┘ = 90° SYMBOL
- = PROPOSED WELL HEAD.
- ▲ = SECTION CORNERS LOCATED.