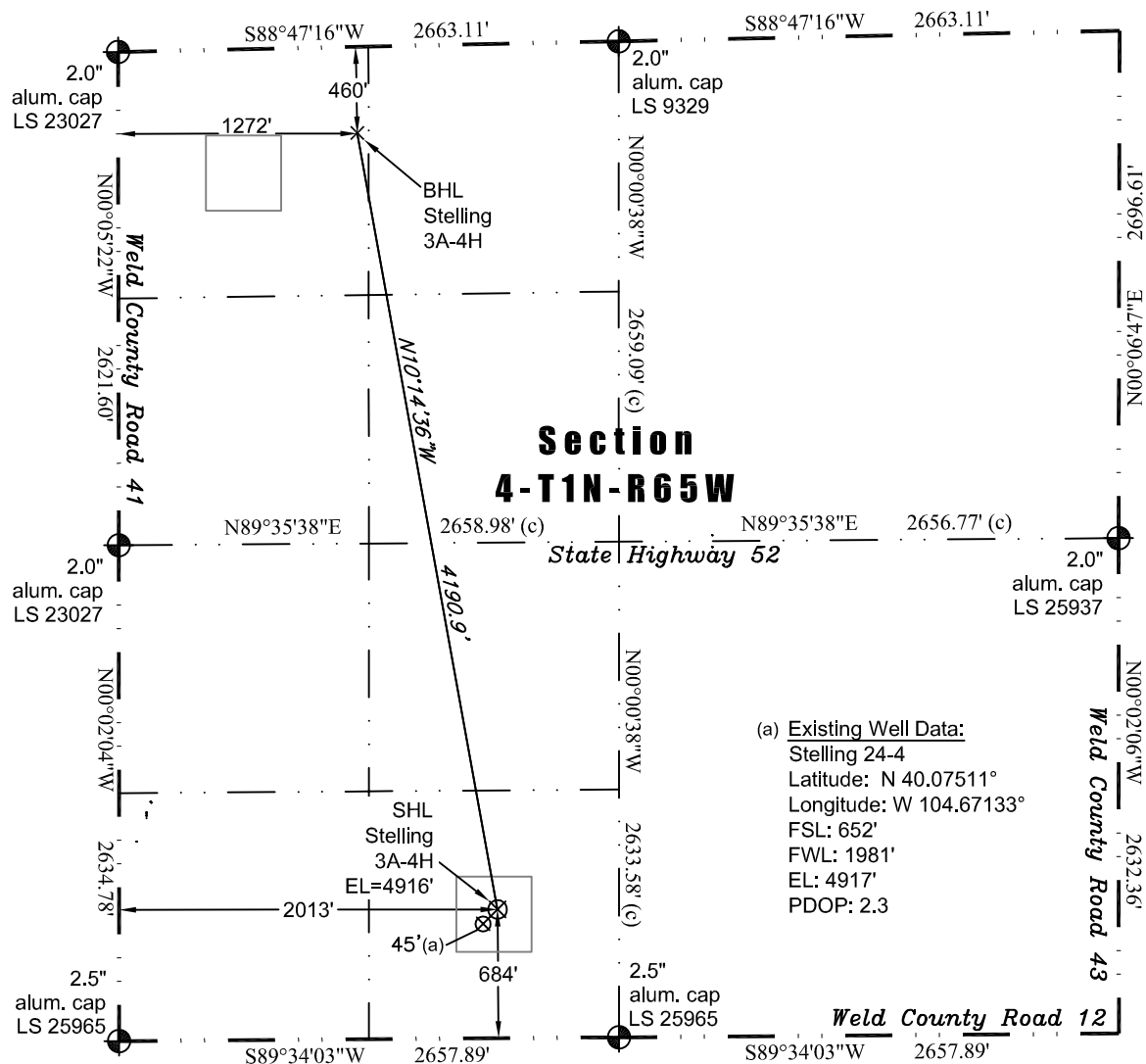


PLS Group, LLC
109 Coronado Ct. - Bldg. 7
Fort Collins, Colorado 80525
P. 970-282-3446 Fx. 970-377-6767

WELL LOCATION CERTIFICATE

THIS MAP DOES NOT REPRESENT A BOUNDARY SURVEY



Scale 1" = 1000'
1000
0
approximate scale

LEGEND
— found survey monument
- - - calculated dimension
(c)

(a) Existing Well Data:
Stelling 24-4
Latitude: N 40.07511°
Longitude: W 104.67133°
FSL: 652'
FWL: 1981'
EL: 4917'
PDOP: 2.3

In accordance with a request from Jay Knutson of EnCana Oil & Gas (USA) Inc., PLS Group, LLC has determined the location of the **Stelling 3A-4H** well site to be SHL: 684' FSL and 2013' FWL, (BHL: 460 FNL and 1272' FWL) as measured at ninety (90) degrees from the section lines of Section 4, Township 1 North, Range 65 West, 6th Principal Meridian, Weld County, CO.

Proposed Surface Hole Data:

Latitude: N 40.07520° (BHL 40.08654°)
Longitude: W 104.67122° (BHL 104.67374°)
PDOP: 2.3

Nearest:

Building 1,136' east	Above Ground Utility 1,131' east
Public Road 1,264' southeast	Railroad 6,800' southeast
Property Line 684' south	Well Window: SHL is 174' inside
Existing Well: Stelling 24-4, 45' southwest	

Notes:

- 1) Bearings and distances based upon NAD 83 Colorado North State Plane Coordinates using RTK GPS observations taken on 10/17/2011 by operator Tom Winans.
- 2) Conversion factor to ground (1.000271498).
- 3) Elevations based on NAVD 88 GPS heights and Geoid 2003 corrections.
- 4) See Location Drawing for visible improvements within 400 feet.
- 5) The surface us is a cultivated field.

NOTICE: According to Colorado law you must commence any legal action based upon any defect in this W.L.C. within three years after you first discover such defect. In no event may any action based upon any defect in this W.L.C. be commenced more than ten years from this said date of the certification shown hereon.

I hereby certify that this Well Location Certificate was prepared by me or under my direct supervision on 10/19/2011 for and on behalf of EnCana Oil & Gas (USA) Inc. That it is not a Land Survey Plat or an Improvement Survey Plat and that it is not to be relied upon for establishment of fences, buildings, or other future improvement lines.

John Robert McGehee LS#38219
Well: Stelling 3A-4H WLC