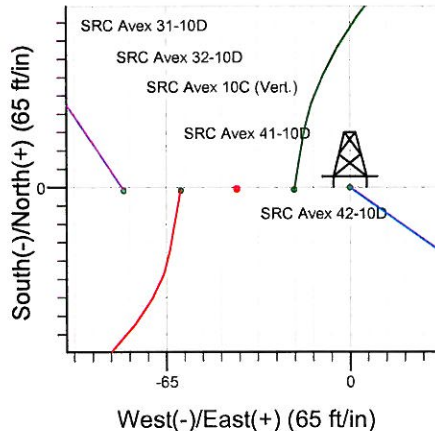
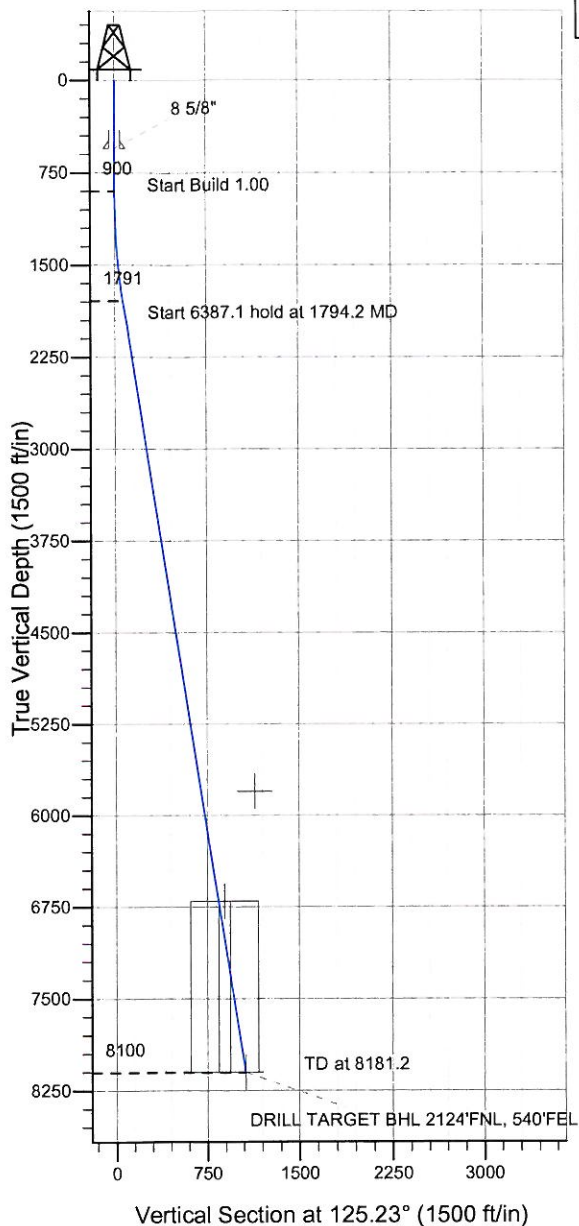
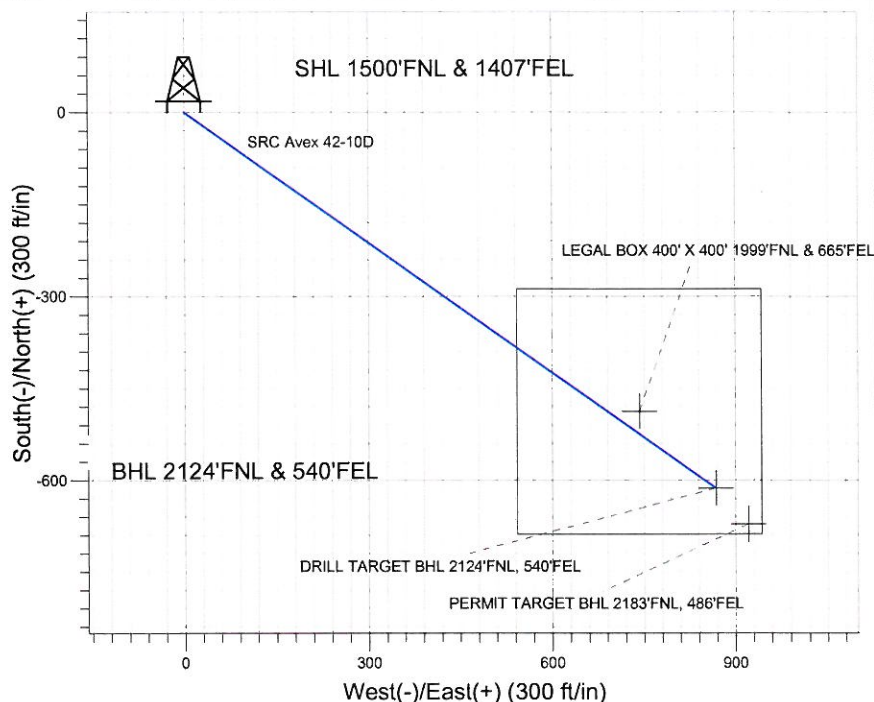


ENSIGN**Directional****Well Name: SRC Avex 42-10D**

Surface Location: SRC Avex 42-10D Pad Sec.10-T4N-R68W
 North American Datum 1983 US State Plane 1983 Colorado Northern Zone

Ground Elevation: 5038.0

+N/-S	+E/-W	Northing	Easting	Latitude	Longitude	Slot
0.0	0.0	1363966.98	3143626.35	40.331345	-104.984824	
Original Well Elev WELL @ 5051.0ft (Original Well Elev)						

Synergy Resources

SRC Avex 42-10D Pad Sec.10-T4N-R68W
 SRC Avex 42-10D
 Plan #1 (7-12-11)
 9:18, July 26 2011



Azimuths to True North
 Magnetic North: 8.96°

Magnetic Field
 Strength: 53057.8snT
 Dip Angle: 66.95°
 Date: 7/26/2011
 Model: IGRF2010

WELLBORE TARGET DETAILS (LAT/LONG)

Name	TVD	+N/-S	+E/-W	Latitude	Longitude	Shape
PERMIT TARGET BHL 2183'FNL, 486'FEL	5800.0	-671.8	921.8	40.329501	-104.981518	Point
LEGAL BOX 400' X 400' 1999'FNL & 665'FEL	6700.0	-487.8	742.8	40.330006	-104.982160	Rectangle (Sides: L400.0 W400.0)
DRILL TARGET BHL 2124'FNL, 540'FEL	8100.0	-612.8	867.8	40.329663	-104.981712	Point

SECTION DETAILS

Sec	MD	Inc	Azi	TVD	+N/-S	+E/-W	DLeg	TFace	VSec	Target
1	0.0	0.00	0.00	0.0	0.0	0.0	0.00	0.00	0.0	
2	900.0	0.00	0.00	900.0	0.0	0.0	0.00	0.00	0.0	
3	1794.2	8.94	125.23	1790.5	-40.2	56.9	1.00	125.23	69.6	
4	8181.2	8.94	125.23	8100.0	-612.8	867.8	0.00	0.00	1062.4	DRILL TARGET BHL 2124'FNL, 540'FEL



Directional

Synergy Resources

SEC.10-T4N-R68W

SRC Avex 42-10D Pad Sec.10-T4N-R68W

SRC Avex 42-10D

Wellbore #1

Plan: Plan #1 (7-12-11)

Standard Planning Report

26 July, 2011

Database:	Landmark	Local Co-ordinate Reference:	Well SRC Avex 42-10D
Company:	Synergy Resources	TVD Reference:	WELL @ 5051.0ft (Original Well Elev)
Project:	SEC.10-T4N-R68W	MD Reference:	WELL @ 5051.0ft (Original Well Elev)
Site:	SRC Avex 42-10D Pad Sec.10-T4N-R68W	North Reference:	True
Well:	SRC Avex 42-10D	Survey Calculation Method:	Minimum Curvature
Wellbore:	Wellbore #1		
Design:	Plan #1 (7-12-11)		

Project	SEC.10-T4N-R68W, Weld County, Colorado		
Map System:	US State Plane 1983	System Datum:	Mean Sea Level
Geo Datum:	North American Datum 1983		Using Well Reference Point
Map Zone:	Colorado Northern Zone		Using geodetic scale factor

Site	SRC Avex 42-10D Pad Sec.10-T4N-R68W				
Site Position:		Northing:	1,363,966.99 ft	Latitude:	40.331345
From:	Lat/Long	Easting:	3,143,626.35 ft	Longitude:	-104.984824
Position Uncertainty:	0.0 ft	Slot Radius:	"	Grid Convergence:	0.33 °

Well	SRC Avex 42-10D					
Well Position	+N/-S	0.0 ft	Northing:	1,363,966.98 ft	Latitude:	40.331345
	+E/-W	0.0 ft	Easting:	3,143,626.35 ft	Longitude:	-104.984824
Position Uncertainty		0.0 ft	Wellhead Elevation:	ft	Ground Level:	5,038.0 ft

Wellbore	Wellbore #1				
Magnetics	Model Name	Sample Date	Declination (°)	Dip Angle (°)	Field Strength (nT)
	IGRF2010	7/26/2011	8.96	66.95	53,058

Design	Plan #1 (7-12-11)			
Audit Notes:				
Version:	Phase:	PROTOTYPE	Tie On Depth:	0.0
Vertical Section:	Depth From (TVD)	+N/-S (ft)	+E/-W (ft)	Direction (°)
	0.0	0.0	0.0	125.23

Plan Sections										
Measured Depth (ft)	Inclination (°)	Azimuth (°)	Vertical Depth (ft)	+N/-S (ft)	+E/-W (ft)	Dogleg Rate (°/100ft)	Build Rate (°/100ft)	Turn Rate (°/100ft)	TFO (°)	Target
0.0	0.00	0.00	0.0	0.0	0.0	0.00	0.00	0.00	0.00	
900.0	0.00	0.00	900.0	0.0	0.0	0.00	0.00	0.00	0.00	
1,794.2	8.94	125.23	1,790.5	-40.2	56.9	1.00	1.00	0.00	125.23	
8,181.2	8.94	125.23	8,100.0	-612.8	867.8	0.00	0.00	0.00	0.00	DRILL TARGET BH

Database: Landmark
Company: Synergy Resources
Project: SEC.10-T4N-R68W
Site: SRC Avex 42-10D Pad Sec.10-T4N-R68W
Well: SRC Avex 42-10D
Wellbore: Wellbore #1
Design: Plan #1 (7-12-11)

Local Co-ordinate Reference: Well SRC Avex 42-10D
TVD Reference: WELL @ 5051.0ft (Original Well Elev)
MD Reference: WELL @ 5051.0ft (Original Well Elev)
North Reference: True
Survey Calculation Method: Minimum Curvature

Planned Survey

Measured Depth (ft)	Inclination (°)	Azimuth (°)	Vertical Depth (ft)	+N/-S (ft)	+E/-W (ft)	Vertical Section (ft)	Dogleg Rate (°/100ft)	Build Rate (°/100ft)	Turn Rate (°/100ft)
0.0	0.00	0.00	0.0	0.0	0.0	0.0	0.00	0.00	0.00
40.0	0.00	0.00	40.0	0.0	0.0	0.0	0.00	0.00	0.00
80.0	0.00	0.00	80.0	0.0	0.0	0.0	0.00	0.00	0.00
120.0	0.00	0.00	120.0	0.0	0.0	0.0	0.00	0.00	0.00
160.0	0.00	0.00	160.0	0.0	0.0	0.0	0.00	0.00	0.00
200.0	0.00	0.00	200.0	0.0	0.0	0.0	0.00	0.00	0.00
240.0	0.00	0.00	240.0	0.0	0.0	0.0	0.00	0.00	0.00
280.0	0.00	0.00	280.0	0.0	0.0	0.0	0.00	0.00	0.00
320.0	0.00	0.00	320.0	0.0	0.0	0.0	0.00	0.00	0.00
360.0	0.00	0.00	360.0	0.0	0.0	0.0	0.00	0.00	0.00
400.0	0.00	0.00	400.0	0.0	0.0	0.0	0.00	0.00	0.00
440.0	0.00	0.00	440.0	0.0	0.0	0.0	0.00	0.00	0.00
480.0	0.00	0.00	480.0	0.0	0.0	0.0	0.00	0.00	0.00
520.0	0.00	0.00	520.0	0.0	0.0	0.0	0.00	0.00	0.00
550.0	0.00	0.00	550.0	0.0	0.0	0.0	0.00	0.00	0.00
8 5/8"									
560.0	0.00	0.00	560.0	0.0	0.0	0.0	0.00	0.00	0.00
600.0	0.00	0.00	600.0	0.0	0.0	0.0	0.00	0.00	0.00
640.0	0.00	0.00	640.0	0.0	0.0	0.0	0.00	0.00	0.00
680.0	0.00	0.00	680.0	0.0	0.0	0.0	0.00	0.00	0.00
720.0	0.00	0.00	720.0	0.0	0.0	0.0	0.00	0.00	0.00
760.0	0.00	0.00	760.0	0.0	0.0	0.0	0.00	0.00	0.00
800.0	0.00	0.00	800.0	0.0	0.0	0.0	0.00	0.00	0.00
840.0	0.00	0.00	840.0	0.0	0.0	0.0	0.00	0.00	0.00
880.0	0.00	0.00	880.0	0.0	0.0	0.0	0.00	0.00	0.00
900.0	0.00	0.00	900.0	0.0	0.0	0.0	0.00	0.00	0.00
920.0	0.20	125.23	920.0	0.0	0.0	0.0	1.00	1.00	0.00
960.0	0.60	125.23	960.0	-0.2	0.3	0.3	1.00	1.00	0.00
1,000.0	1.00	125.23	1,000.0	-0.5	0.7	0.9	1.00	1.00	0.00
1,040.0	1.40	125.23	1,040.0	-1.0	1.4	1.7	1.00	1.00	0.00
1,080.0	1.80	125.23	1,080.0	-1.6	2.3	2.8	1.00	1.00	0.00
1,120.0	2.20	125.23	1,119.9	-2.4	3.4	4.2	1.00	1.00	0.00
1,160.0	2.60	125.23	1,159.9	-3.4	4.8	5.9	1.00	1.00	0.00
1,200.0	3.00	125.23	1,199.9	-4.5	6.4	7.9	1.00	1.00	0.00
1,240.0	3.40	125.23	1,239.8	-5.8	8.2	10.1	1.00	1.00	0.00
1,280.0	3.80	125.23	1,279.7	-7.3	10.3	12.6	1.00	1.00	0.00
1,320.0	4.20	125.23	1,319.6	-8.9	12.6	15.4	1.00	1.00	0.00
1,360.0	4.60	125.23	1,359.5	-10.6	15.1	18.5	1.00	1.00	0.00
1,400.0	5.00	125.23	1,399.4	-12.6	17.8	21.8	1.00	1.00	0.00
1,440.0	5.40	125.23	1,439.2	-14.7	20.8	25.4	1.00	1.00	0.00
1,480.0	5.80	125.23	1,479.0	-16.9	24.0	29.3	1.00	1.00	0.00
1,520.0	6.20	125.23	1,518.8	-19.3	27.4	33.5	1.00	1.00	0.00
1,560.0	6.60	125.23	1,558.5	-21.9	31.0	38.0	1.00	1.00	0.00
1,600.0	7.00	125.23	1,598.3	-24.6	34.9	42.7	1.00	1.00	0.00
1,640.0	7.40	125.23	1,637.9	-27.5	39.0	47.7	1.00	1.00	0.00
1,680.0	7.80	125.23	1,677.6	-30.6	43.3	53.0	1.00	1.00	0.00
1,720.0	8.20	125.23	1,717.2	-33.8	47.9	58.6	1.00	1.00	0.00
1,760.0	8.60	125.23	1,756.8	-37.2	52.6	64.4	1.00	1.00	0.00
1,794.2	8.94	125.23	1,790.5	-40.2	56.9	69.6	1.00	1.00	0.00
1,800.0	8.94	125.23	1,796.3	-40.7	57.6	70.5	0.00	0.00	0.00
1,840.0	8.94	125.23	1,835.8	-44.3	62.7	76.8	0.00	0.00	0.00
1,880.0	8.94	125.23	1,875.3	-47.9	67.8	83.0	0.00	0.00	0.00
1,920.0	8.94	125.23	1,914.8	-51.4	72.9	89.2	0.00	0.00	0.00
1,960.0	8.94	125.23	1,954.4	-55.0	77.9	95.4	0.00	0.00	0.00

Database: Landmark
Company: Synergy Resources
Project: SEC.10-T4N-R68W
Site: SRC Avex 42-10D Pad Sec.10-T4N-R68W
Well: SRC Avex 42-10D
Wellbore: Wellbore #1
Design: Plan #1 (7-12-11)

Local Co-ordinate Reference: Well SRC Avex 42-10D
TVD Reference: WELL @ 5051.0ft (Original Well Elev)
MD Reference: WELL @ 5051.0ft (Original Well Elev)
North Reference: True
Survey Calculation Method: Minimum Curvature

Planned Survey

Measured Depth (ft)	Inclination (°)	Azimuth (°)	Vertical Depth (ft)	+N/-S (ft)	+E/-W (ft)	Vertical Section (ft)	Dogleg Rate (°/100ft)	Build Rate (°/100ft)	Turn Rate (°/100ft)
2,000.0	8.94	125.23	1,993.9	-58.6	83.0	101.6	0.00	0.00	0.00
2,040.0	8.94	125.23	2,033.4	-62.2	88.1	107.8	0.00	0.00	0.00
2,080.0	8.94	125.23	2,072.9	-65.8	93.2	114.1	0.00	0.00	0.00
2,120.0	8.94	125.23	2,112.4	-69.4	98.2	120.3	0.00	0.00	0.00
2,160.0	8.94	125.23	2,151.9	-73.0	103.3	126.5	0.00	0.00	0.00
2,200.0	8.94	125.23	2,191.4	-76.5	108.4	132.7	0.00	0.00	0.00
2,240.0	8.94	125.23	2,231.0	-80.1	113.5	138.9	0.00	0.00	0.00
2,280.0	8.94	125.23	2,270.5	-83.7	118.6	145.1	0.00	0.00	0.00
2,320.0	8.94	125.23	2,310.0	-87.3	123.6	151.4	0.00	0.00	0.00
2,360.0	8.94	125.23	2,349.5	-90.9	128.7	157.6	0.00	0.00	0.00
2,400.0	8.94	125.23	2,389.0	-94.5	133.8	163.8	0.00	0.00	0.00
2,440.0	8.94	125.23	2,428.5	-98.1	138.9	170.0	0.00	0.00	0.00
2,480.0	8.94	125.23	2,468.0	-101.7	144.0	176.2	0.00	0.00	0.00
2,520.0	8.94	125.23	2,507.6	-105.2	149.0	182.4	0.00	0.00	0.00
2,560.0	8.94	125.23	2,547.1	-108.8	154.1	188.7	0.00	0.00	0.00
2,600.0	8.94	125.23	2,586.6	-112.4	159.2	194.9	0.00	0.00	0.00
2,640.0	8.94	125.23	2,626.1	-116.0	164.3	201.1	0.00	0.00	0.00
2,680.0	8.94	125.23	2,665.6	-119.6	169.3	207.3	0.00	0.00	0.00
2,720.0	8.94	125.23	2,705.1	-123.2	174.4	213.5	0.00	0.00	0.00
2,760.0	8.94	125.23	2,744.6	-126.8	179.5	219.7	0.00	0.00	0.00
2,800.0	8.94	125.23	2,784.2	-130.3	184.6	226.0	0.00	0.00	0.00
2,840.0	8.94	125.23	2,823.7	-133.9	189.7	232.2	0.00	0.00	0.00
2,880.0	8.94	125.23	2,863.2	-137.5	194.7	238.4	0.00	0.00	0.00
2,920.0	8.94	125.23	2,902.7	-141.1	199.8	244.6	0.00	0.00	0.00
2,960.0	8.94	125.23	2,942.2	-144.7	204.9	250.8	0.00	0.00	0.00
3,000.0	8.94	125.23	2,981.7	-148.3	210.0	257.0	0.00	0.00	0.00
3,040.0	8.94	125.23	3,021.2	-151.9	215.1	263.3	0.00	0.00	0.00
3,080.0	8.94	125.23	3,060.7	-155.4	220.1	269.5	0.00	0.00	0.00
3,120.0	8.94	125.23	3,100.3	-159.0	225.2	275.7	0.00	0.00	0.00
3,160.0	8.94	125.23	3,139.8	-162.6	230.3	281.9	0.00	0.00	0.00
3,200.0	8.94	125.23	3,179.3	-166.2	235.4	288.1	0.00	0.00	0.00
3,240.0	8.94	125.23	3,218.8	-169.8	240.4	294.4	0.00	0.00	0.00
3,280.0	8.94	125.23	3,258.3	-173.4	245.5	300.6	0.00	0.00	0.00
3,320.0	8.94	125.23	3,297.8	-177.0	250.6	306.8	0.00	0.00	0.00
3,360.0	8.94	125.23	3,337.3	-180.5	255.7	313.0	0.00	0.00	0.00
3,400.0	8.94	125.23	3,376.9	-184.1	260.8	319.2	0.00	0.00	0.00
3,440.0	8.94	125.23	3,416.4	-187.7	265.8	325.4	0.00	0.00	0.00
3,480.0	8.94	125.23	3,455.9	-191.3	270.9	331.7	0.00	0.00	0.00
3,520.0	8.94	125.23	3,495.4	-194.9	276.0	337.9	0.00	0.00	0.00
3,560.0	8.94	125.23	3,534.9	-198.5	281.1	344.1	0.00	0.00	0.00
3,600.0	8.94	125.23	3,574.4	-202.1	286.2	350.3	0.00	0.00	0.00
3,640.0	8.94	125.23	3,613.9	-205.7	291.2	356.5	0.00	0.00	0.00
3,680.0	8.94	125.23	3,653.5	-209.2	296.3	362.7	0.00	0.00	0.00
3,720.0	8.94	125.23	3,693.0	-212.8	301.4	369.0	0.00	0.00	0.00
3,760.0	8.94	125.23	3,732.5	-216.4	306.5	375.2	0.00	0.00	0.00
3,800.0	8.94	125.23	3,772.0	-220.0	311.5	381.4	0.00	0.00	0.00
3,840.0	8.94	125.23	3,811.5	-223.6	316.6	387.6	0.00	0.00	0.00
3,880.0	8.94	125.23	3,851.0	-227.2	321.7	393.8	0.00	0.00	0.00
3,920.0	8.94	125.23	3,890.5	-230.8	326.8	400.0	0.00	0.00	0.00
3,960.0	8.94	125.23	3,930.1	-234.3	331.9	406.3	0.00	0.00	0.00
4,000.0	8.94	125.23	3,969.6	-237.9	336.9	412.5	0.00	0.00	0.00
4,040.0	8.94	125.23	4,009.1	-241.5	342.0	418.7	0.00	0.00	0.00
4,080.0	8.94	125.23	4,048.6	-245.1	347.1	424.9	0.00	0.00	0.00
4,120.0	8.94	125.23	4,088.1	-248.7	352.2	431.1	0.00	0.00	0.00

Database: Landmark
Company: Synergy Resources
Project: SEC.10-T4N-R68W
Site: SRC Avex 42-10D Pad Sec.10-T4N-R68W
Well: SRC Avex 42-10D
Wellbore: Wellbore #1
Design: Plan #1 (7-12-11)

Local Co-ordinate Reference: Well SRC Avex 42-10D
TVD Reference: WELL @ 5051.0ft (Original Well Elev)
MD Reference: WELL @ 5051.0ft (Original Well Elev)
North Reference: True
Survey Calculation Method: Minimum Curvature

Planned Survey

Measured Depth (ft)	Inclination (°)	Azimuth (°)	Vertical Depth (ft)	+N/-S (ft)	+E/-W (ft)	Vertical Section (ft)	Dogleg Rate (°/100ft)	Build Rate (°/100ft)	Turn Rate (°/100ft)
4,160.0	8.94	125.23	4,127.6	-252.3	357.3	437.3	0.00	0.00	0.00
4,200.0	8.94	125.23	4,167.1	-255.9	362.3	443.6	0.00	0.00	0.00
4,240.0	8.94	125.23	4,206.7	-259.4	367.4	449.8	0.00	0.00	0.00
4,280.0	8.94	125.23	4,246.2	-263.0	372.5	456.0	0.00	0.00	0.00
4,320.0	8.94	125.23	4,285.7	-266.6	377.6	462.2	0.00	0.00	0.00
4,360.0	8.94	125.23	4,325.2	-270.2	382.6	468.4	0.00	0.00	0.00
4,400.0	8.94	125.23	4,364.7	-273.8	387.7	474.6	0.00	0.00	0.00
4,440.0	8.94	125.23	4,404.2	-277.4	392.8	480.9	0.00	0.00	0.00
4,480.0	8.94	125.23	4,443.7	-281.0	397.9	487.1	0.00	0.00	0.00
4,520.0	8.94	125.23	4,483.2	-284.5	403.0	493.3	0.00	0.00	0.00
4,560.0	8.94	125.23	4,522.8	-288.1	408.0	499.5	0.00	0.00	0.00
4,600.0	8.94	125.23	4,562.3	-291.7	413.1	505.7	0.00	0.00	0.00
4,640.0	8.94	125.23	4,601.8	-295.3	418.2	511.9	0.00	0.00	0.00
4,680.0	8.94	125.23	4,641.3	-298.9	423.3	518.2	0.00	0.00	0.00
4,720.0	8.94	125.23	4,680.8	-302.5	428.4	524.4	0.00	0.00	0.00
4,760.0	8.94	125.23	4,720.3	-306.1	433.4	530.6	0.00	0.00	0.00
4,800.0	8.94	125.23	4,759.8	-309.7	438.5	536.8	0.00	0.00	0.00
4,840.0	8.94	125.23	4,799.4	-313.2	443.6	543.0	0.00	0.00	0.00
4,880.0	8.94	125.23	4,838.9	-316.8	448.7	549.3	0.00	0.00	0.00
4,920.0	8.94	125.23	4,878.4	-320.4	453.7	555.5	0.00	0.00	0.00
4,960.0	8.94	125.23	4,917.9	-324.0	458.8	561.7	0.00	0.00	0.00
5,000.0	8.94	125.23	4,957.4	-327.6	463.9	567.9	0.00	0.00	0.00
5,040.0	8.94	125.23	4,996.9	-331.2	469.0	574.1	0.00	0.00	0.00
5,080.0	8.94	125.23	5,036.4	-334.8	474.1	580.3	0.00	0.00	0.00
5,120.0	8.94	125.23	5,076.0	-338.3	479.1	586.6	0.00	0.00	0.00
5,160.0	8.94	125.23	5,115.5	-341.9	484.2	592.8	0.00	0.00	0.00
5,200.0	8.94	125.23	5,155.0	-345.5	489.3	599.0	0.00	0.00	0.00
5,240.0	8.94	125.23	5,194.5	-349.1	494.4	605.2	0.00	0.00	0.00
5,280.0	8.94	125.23	5,234.0	-352.7	499.5	611.4	0.00	0.00	0.00
5,320.0	8.94	125.23	5,273.5	-356.3	504.5	617.6	0.00	0.00	0.00
5,360.0	8.94	125.23	5,313.0	-359.9	509.6	623.9	0.00	0.00	0.00
5,400.0	8.94	125.23	5,352.6	-363.4	514.7	630.1	0.00	0.00	0.00
5,440.0	8.94	125.23	5,392.1	-367.0	519.8	636.3	0.00	0.00	0.00
5,480.0	8.94	125.23	5,431.6	-370.6	524.8	642.5	0.00	0.00	0.00
5,520.0	8.94	125.23	5,471.1	-374.2	529.9	648.7	0.00	0.00	0.00
5,560.0	8.94	125.23	5,510.6	-377.8	535.0	654.9	0.00	0.00	0.00
5,600.0	8.94	125.23	5,550.1	-381.4	540.1	661.2	0.00	0.00	0.00
5,640.0	8.94	125.23	5,589.6	-385.0	545.2	667.4	0.00	0.00	0.00
5,680.0	8.94	125.23	5,629.2	-388.5	550.2	673.6	0.00	0.00	0.00
5,720.0	8.94	125.23	5,668.7	-392.1	555.3	679.8	0.00	0.00	0.00
5,760.0	8.94	125.23	5,708.2	-395.7	560.4	686.0	0.00	0.00	0.00
5,800.0	8.94	125.23	5,747.7	-399.3	565.5	692.2	0.00	0.00	0.00
5,840.0	8.94	125.23	5,787.2	-402.9	570.5	698.5	0.00	0.00	0.00
5,880.0	8.94	125.23	5,826.7	-406.5	575.6	704.7	0.00	0.00	0.00
5,920.0	8.94	125.23	5,866.2	-410.1	580.7	710.9	0.00	0.00	0.00
5,921.3	8.94	125.23	5,867.6	-410.2	580.9	711.1	0.00	0.00	0.00
PERMIT TARGET BHL 2183'FNL, 486'FEL									
5,960.0	8.94	125.23	5,905.7	-413.7	585.8	717.1	0.00	0.00	0.00
6,000.0	8.94	125.23	5,945.3	-417.2	590.9	723.3	0.00	0.00	0.00
6,040.0	8.94	125.23	5,984.8	-420.8	595.9	729.5	0.00	0.00	0.00
6,080.0	8.94	125.23	6,024.3	-424.4	601.0	735.8	0.00	0.00	0.00
6,120.0	8.94	125.23	6,063.8	-428.0	606.1	742.0	0.00	0.00	0.00
6,160.0	8.94	125.23	6,103.3	-431.6	611.2	748.2	0.00	0.00	0.00
6,200.0	8.94	125.23	6,142.8	-435.2	616.3	754.4	0.00	0.00	0.00

Database: Landmark
Company: Synergy Resources
Project: SEC.10-T4N-R68W
Site: SRC Avex 42-10D Pad Sec.10-T4N-R68W
Well: SRC Avex 42-10D
Wellbore: Wellbore #1
Design: Plan #1 (7-12-11)

Local Co-ordinate Reference: Well SRC Avex 42-10D
TVD Reference: WELL @ 5051.0ft (Original Well Elev)
MD Reference: WELL @ 5051.0ft (Original Well Elev)
North Reference: True
Survey Calculation Method: Minimum Curvature

Planned Survey

Measured Depth (ft)	Inclination (°)	Azimuth (°)	Vertical Depth (ft)	+N/-S (ft)	+E/-W (ft)	Vertical Section (ft)	Dogleg Rate (°/100ft)	Build Rate (°/100ft)	Turn Rate (°/100ft)
6,240.0	8.94	125.23	6,182.3	-438.8	621.3	760.6	0.00	0.00	0.00
6,280.0	8.94	125.23	6,221.9	-442.3	626.4	766.8	0.00	0.00	0.00
6,320.0	8.94	125.23	6,261.4	-445.9	631.5	773.1	0.00	0.00	0.00
6,360.0	8.94	125.23	6,300.9	-449.5	636.6	779.3	0.00	0.00	0.00
6,400.0	8.94	125.23	6,340.4	-453.1	641.6	785.5	0.00	0.00	0.00
6,440.0	8.94	125.23	6,379.9	-456.7	646.7	791.7	0.00	0.00	0.00
6,480.0	8.94	125.23	6,419.4	-460.3	651.8	797.9	0.00	0.00	0.00
6,520.0	8.94	125.23	6,458.9	-463.9	656.9	804.2	0.00	0.00	0.00
6,560.0	8.94	125.23	6,498.5	-467.4	662.0	810.4	0.00	0.00	0.00
6,600.0	8.94	125.23	6,538.0	-471.0	667.0	816.6	0.00	0.00	0.00
6,640.0	8.94	125.23	6,577.5	-474.6	672.1	822.8	0.00	0.00	0.00
6,680.0	8.94	125.23	6,617.0	-478.2	677.2	829.0	0.00	0.00	0.00
6,720.0	8.94	125.23	6,656.5	-481.8	682.3	835.2	0.00	0.00	0.00
6,760.0	8.94	125.23	6,696.0	-485.4	687.4	841.5	0.00	0.00	0.00
6,771.2	8.94	125.23	6,707.1	-486.4	688.8	843.2	0.00	0.00	0.00
LEGAL BOX 400' X 400' 1999'FNL & 665'FEL									
6,800.0	8.94	125.23	6,735.5	-489.0	692.4	847.7	0.00	0.00	0.00
6,840.0	8.94	125.23	6,775.1	-492.5	697.5	853.9	0.00	0.00	0.00
6,880.0	8.94	125.23	6,814.6	-496.1	702.6	860.1	0.00	0.00	0.00
6,920.0	8.94	125.23	6,854.1	-499.7	707.7	866.3	0.00	0.00	0.00
6,960.0	8.94	125.23	6,893.6	-503.3	712.7	872.5	0.00	0.00	0.00
7,000.0	8.94	125.23	6,933.1	-506.9	717.8	878.8	0.00	0.00	0.00
7,040.0	8.94	125.23	6,972.6	-510.5	722.9	885.0	0.00	0.00	0.00
7,080.0	8.94	125.23	7,012.1	-514.1	728.0	891.2	0.00	0.00	0.00
7,120.0	8.94	125.23	7,051.7	-517.7	733.1	897.4	0.00	0.00	0.00
7,160.0	8.94	125.23	7,091.2	-521.2	738.1	903.6	0.00	0.00	0.00
7,200.0	8.94	125.23	7,130.7	-524.8	743.2	909.8	0.00	0.00	0.00
7,240.0	8.94	125.23	7,170.2	-528.4	748.3	916.1	0.00	0.00	0.00
7,280.0	8.94	125.23	7,209.7	-532.0	753.4	922.3	0.00	0.00	0.00
7,320.0	8.94	125.23	7,249.2	-535.6	758.5	928.5	0.00	0.00	0.00
7,360.0	8.94	125.23	7,288.7	-539.2	763.5	934.7	0.00	0.00	0.00
7,400.0	8.94	125.23	7,328.2	-542.8	768.6	940.9	0.00	0.00	0.00
7,440.0	8.94	125.23	7,367.8	-546.3	773.7	947.1	0.00	0.00	0.00
7,480.0	8.94	125.23	7,407.3	-549.9	778.8	953.4	0.00	0.00	0.00
7,520.0	8.94	125.23	7,446.8	-553.5	783.8	959.6	0.00	0.00	0.00
7,560.0	8.94	125.23	7,486.3	-557.1	788.9	965.8	0.00	0.00	0.00
7,600.0	8.94	125.23	7,525.8	-560.7	794.0	972.0	0.00	0.00	0.00
7,640.0	8.94	125.23	7,565.3	-564.3	799.1	978.2	0.00	0.00	0.00
7,680.0	8.94	125.23	7,604.8	-567.9	804.2	984.4	0.00	0.00	0.00
7,720.0	8.94	125.23	7,644.4	-571.4	809.2	990.7	0.00	0.00	0.00
7,760.0	8.94	125.23	7,683.9	-575.0	814.3	996.9	0.00	0.00	0.00
7,800.0	8.94	125.23	7,723.4	-578.6	819.4	1,003.1	0.00	0.00	0.00
7,840.0	8.94	125.23	7,762.9	-582.2	824.5	1,009.3	0.00	0.00	0.00
7,880.0	8.94	125.23	7,802.4	-585.8	829.6	1,015.5	0.00	0.00	0.00
7,920.0	8.94	125.23	7,841.9	-589.4	834.6	1,021.7	0.00	0.00	0.00
7,960.0	8.94	125.23	7,881.4	-593.0	839.7	1,028.0	0.00	0.00	0.00
8,000.0	8.94	125.23	7,921.0	-596.5	844.8	1,034.2	0.00	0.00	0.00
8,040.0	8.94	125.23	7,960.5	-600.1	849.9	1,040.4	0.00	0.00	0.00
8,080.0	8.94	125.23	8,000.0	-603.7	854.9	1,046.6	0.00	0.00	0.00
8,120.0	8.94	125.23	8,039.5	-607.3	860.0	1,052.8	0.00	0.00	0.00
8,160.0	8.94	125.23	8,079.0	-610.9	865.1	1,059.1	0.00	0.00	0.00
8,181.2	8.94	125.23	8,100.0	-612.8	867.8	1,062.4	0.00	0.00	0.00
DRILL TARGET BHL 2124'FNL, 540'FEL									

Database: Landmark
Company: Synergy Resources
Project: SEC.10-T4N-R68W
Site: SRC Avex 42-10D Pad Sec.10-T4N-R68W
Well: SRC Avex 42-10D
Wellbore: Wellbore #1
Design: Plan #1 (7-12-11)

Local Co-ordinate Reference: Well SRC Avex 42-10D
TVD Reference: WELL @ 5051.0ft (Original Well Elev)
MD Reference: WELL @ 5051.0ft (Original Well Elev)
North Reference: True
Survey Calculation Method: Minimum Curvature

Targets

Target Name

- hit/miss target	Dip Angle	Dip Dir.	TVD	+N/-S	+E/-W	Northing	Easting	Latitude	Longitude
- Shape	(°)	(°)	(ft)	(ft)	(ft)	(ft)	(ft)		
LEGAL BOX 400' X 400'	0.00	0.00	6,700.0	-487.8	742.8	1,363,483.53	3,144,371.94	40.330006	-104.982160
- plan misses target center by 54.5ft at 6771.2ft MD (6707.1 TVD, -486.4 N, 688.8 E)									
- Rectangle (sides W400.0 H400.0 D1,400.0)									
PERMIT TARGET BH	0.00	0.00	5,800.0	-671.8	921.8	1,363,300.62	3,144,551.95	40.329501	-104.981518
- plan misses target center by 435.0ft at 5921.3ft MD (5867.6 TVD, -410.2 N, 580.9 E)									
- Point									
DRILL TARGET BHL	0.00	0.00	8,100.0	-612.8	867.8	1,363,359.26	3,144,497.66	40.329663	-104.981712
- plan hits target center									
- Point									

Casing Points

Measured Depth	Vertical Depth	Name	Casing Diameter	Hole Diameter
(ft)	(ft)		(")	(")
550.0	550.0	8 5/8"	8-5/8	12-1/4



Directional

Synergy Resources

SEC.10-T4N-R68W

SRC Avex 42-10D Pad Sec.10-T4N-R68W

SRC Avex 42-10D

Wellbore #1

Plan #1 (7-12-11)

Anticollision Report

26 July, 2011

Company:	Synergy Resources	Local Co-ordinate Reference:	Well SRC Avex 42-10D
Project:	SEC.10-T4N-R68W	TVD Reference:	WELL @ 5051.0ft (Original Well Elev)
Reference Site:	SRC Avex 42-10D Pad Sec.10-T4N-R68W	MD Reference:	WELL @ 5051.0ft (Original Well Elev)
Site Error:	0.0ft	North Reference:	True
Reference Well:	SRC Avex 42-10D	Survey Calculation Method:	Minimum Curvature
Well Error:	0.0ft	Output errors are at	2.00 sigma
Reference Wellbore	Wellbore #1	Database:	Landmark
Reference Design:	Plan #1 (7-12-11)	Offset TVD Reference:	Offset Datum

Reference	Plan #1 (7-12-11)
Filter type:	NO GLOBAL FILTER: Using user defined selection & filtering criteria
Interpolation Method:	Stations
Depth Range:	Unlimited
Results Limited by:	Maximum center-center distance of 10,000.0ft
Warning Levels Evaluated at:	2.00 Sigma
Error Model:	ISCWSA
Scan Method:	Closest Approach 3D
Error Surface:	Elliptical Conic

Survey Tool Program		Date 7/26/2011			
From (ft)	To (ft)	Survey (Wellbore)	Tool Name	Description	
0.0	8,181.2	Plan #1 (7-12-11) (Wellbore #1)	MWD	MWD - Standard	

Summary						
Site Name	Reference Measured Depth (ft)	Offset Measured Depth (ft)	Distance Between Centres (ft)	Distance Between Ellipses (ft)	Separation Factor	Warning
Offset Well - Wellbore - Design						
SRC Avex 42-10D Pad Sec.10-T4N-R68W						
SRC Avex 10C (Vert.) - Wellbore #1 - Design #1	900.0	900.0	39.9	36.1	10.436	CC, ES
SRC Avex 10C (Vert.) - Wellbore #1 - Design #1	1,200.0	1,199.9	46.4	41.4	9.150	SF
SRC Avex 41-10D - Wellbore #1 - Plan #1 (7-12-11)	905.6	905.6	19.4	15.5	5.042	CC, ES
SRC Avex 41-10D - Wellbore #1 - Plan #1 (7-12-11)	1,000.0	999.9	20.6	16.3	4.841	SF

Offset Design	SRC Avex 42-10D Pad Sec.10-T4N-R68W - SRC Avex 10C (Vert.) - Wellbore #1 - Design #1										Offset Site Error:	0.0 ft
Survey Program:	0-MWD										Offset Well Error:	0.0 ft
Reference	Offset	Semi Major Axis			Distance				Minimum Separation	Separation Factor	Warning	
Measured Depth (ft)	Vertical Depth (ft)	Measured Depth (ft)	Vertical Depth (ft)	Reference (ft)	Offset (ft)	Highside Toolface (°)	Offset Wellbore Centre +N/-S (ft)	+E/-W (ft)	Between Centres (ft)	Between Ellipses (ft)		
0.0	0.0	0.0	0.0	0.0	0.0	-91.05	-0.7	-39.9	39.9			
100.0	100.0	100.0	100.0	0.1	0.1	-91.05	-0.7	-39.9	39.9	39.7	0.22	177.410
200.0	200.0	200.0	200.0	0.3	0.3	-91.05	-0.7	-39.9	39.9	39.2	0.67	59.137
300.0	300.0	300.0	300.0	0.6	0.6	-91.05	-0.7	-39.9	39.9	38.8	1.12	35.482
400.0	400.0	400.0	400.0	0.8	0.8	-91.05	-0.7	-39.9	39.9	38.3	1.57	25.344
500.0	500.0	500.0	500.0	1.0	1.0	-91.05	-0.7	-39.9	39.9	37.9	2.02	19.712
600.0	600.0	600.0	600.0	1.2	1.2	-91.05	-0.7	-39.9	39.9	37.4	2.47	16.128
700.0	700.0	700.0	700.0	1.5	1.5	-91.05	-0.7	-39.9	39.9	37.0	2.92	13.647
800.0	800.0	800.0	800.0	1.7	1.7	-91.05	-0.7	-39.9	39.9	36.5	3.37	11.827
900.0	900.0	900.0	900.0	1.9	1.9	-91.05	-0.7	-39.9	39.9	36.1	3.82	10.436 CC, ES
1,000.0	1,000.0	1,000.0	1,000.0	2.1	2.1	144.44	-0.7	-39.9	40.6	36.3	4.25	9.553
1,100.0	1,100.0	1,100.0	1,100.0	2.3	2.4	146.47	-0.7	-39.9	42.7	38.1	4.66	9.174
1,200.0	1,199.9	1,199.9	1,199.9	2.5	2.6	149.43	-0.7	-39.9	46.4	41.4	5.08	9.150 SF
1,300.0	1,299.7	1,299.7	1,299.7	2.7	2.8	152.84	-0.7	-39.9	51.8	46.3	5.50	9.422
1,400.0	1,399.4	1,399.4	1,399.4	2.9	3.0	156.30	-0.7	-39.9	58.9	53.0	5.92	9.944
1,500.0	1,498.9	1,498.9	1,498.9	3.2	3.3	159.52	-0.7	-39.9	67.8	61.4	6.35	10.675
1,600.0	1,598.3	1,598.3	1,598.3	3.4	3.5	162.38	-0.7	-39.9	78.5	71.7	6.78	11.580
1,700.0	1,697.4	1,697.4	1,697.4	3.7	3.7	164.83	-0.7	-39.9	91.0	83.8	7.21	12.629
1,794.2	1,790.5	1,790.5	1,790.5	4.0	3.9	166.79	-0.7	-39.9	104.5	96.9	7.61	13.724
1,800.0	1,796.3	1,796.3	1,796.3	4.0	3.9	166.90	-0.7	-39.9	105.4	97.7	7.64	13.793
1,900.0	1,895.1	1,895.1	1,895.1	4.3	4.1	168.58	-0.7	-39.9	120.6	112.5	8.08	14.915
2,000.0	1,993.9	1,993.9	1,993.9	4.6	4.4	169.88	-0.7	-39.9	135.8	127.3	8.53	15.923
2,100.0	2,092.7	2,092.7	2,092.7	4.9	4.6	170.91	-0.7	-39.9	151.2	142.2	8.98	16.832

CC - Min centre to center distance or convergent point, SF - min separation factor, ES - min ellipse separation

Company: Synergy Resources
Project: SEC.10-T4N-R68W
Reference Site: SRC Avex 42-10D Pad Sec.10-T4N-R68W
Site Error: 0.0ft
Reference Well: SRC Avex 42-10D
Well Error: 0.0ft
Reference Wellbore: Wellbore #1
Reference Design: Plan #1 (7-12-11)

Local Co-ordinate Reference: Well SRC Avex 42-10D
TVD Reference: WELL @ 5051.0ft (Original Well Elev)
MD Reference: WELL @ 5051.0ft (Original Well Elev)
North Reference: True
Survey Calculation Method: Minimum Curvature
Output errors are at 2.00 sigma
Database: Landmark
Offset TVD Reference: Offset Datum

Offset Design SRC Avex 42-10D Pad Sec.10-T4N-R68W - SRC Avex 10C (Vert.) - Wellbore #1 - Design #1													Offset Site Error:	0.0 ft
Survey Program: 0-MWD													Offset Well Error:	0.0 ft
Reference		Offset		Semi Major Axis			Distance						Warning	
Measured Depth (ft)	Vertical Depth (ft)	Measured Depth (ft)	Vertical Depth (ft)	Reference (ft)	Offset (ft)	Highside Toolface (°)	Offset Wellbore Centre +N/-S (ft)	Offset Wellbore Centre +E/-W (ft)	Between Centres (ft)	Between Ellipses (ft)	Minimum Separation (ft)	Separation Factor		
2,200.0	2,191.4	2,191.4	2,191.4	5.3	4.8	171.76	-0.7	-39.9	166.5	157.1	9.43	17.656		
2,300.0	2,290.2	2,290.2	2,290.2	5.6	5.0	172.46	-0.7	-39.9	181.9	172.0	9.89	18.403		
2,400.0	2,389.0	2,389.0	2,389.0	6.0	5.3	173.05	-0.7	-39.9	197.4	187.0	10.34	19.084		
2,500.0	2,487.8	2,487.8	2,487.8	6.3	5.5	173.56	-0.7	-39.9	212.8	202.0	10.80	19.707		
2,600.0	2,586.6	2,586.6	2,586.6	6.7	5.7	173.99	-0.7	-39.9	228.2	217.0	11.26	20.279		
2,700.0	2,685.4	2,685.4	2,685.4	7.0	5.9	174.38	-0.7	-39.9	243.7	232.0	11.71	20.805		
2,800.0	2,784.2	2,784.2	2,784.2	7.4	6.1	174.71	-0.7	-39.9	259.2	247.0	12.17	21.290		
2,900.0	2,882.9	2,882.9	2,882.9	7.7	6.4	175.01	-0.7	-39.9	274.7	262.0	12.63	21.740		
3,000.0	2,981.7	2,981.7	2,981.7	8.1	6.6	175.28	-0.7	-39.9	290.2	277.1	13.10	22.157		
3,100.0	3,080.5	3,080.5	3,080.5	8.4	6.8	175.52	-0.7	-39.9	305.6	292.1	13.56	22.545		
3,200.0	3,179.3	3,179.3	3,179.3	8.8	7.0	175.73	-0.7	-39.9	321.1	307.1	14.02	22.907		
3,300.0	3,278.1	3,278.1	3,278.1	9.2	7.3	175.93	-0.7	-39.9	336.7	322.2	14.48	23.245		
3,400.0	3,376.9	3,376.9	3,376.9	9.5	7.5	176.11	-0.7	-39.9	352.2	337.2	14.95	23.562		
3,500.0	3,475.6	3,475.6	3,475.6	9.9	7.7	176.28	-0.7	-39.9	367.7	352.3	15.41	23.859		
3,600.0	3,574.4	3,574.4	3,574.4	10.3	7.9	176.43	-0.7	-39.9	383.2	367.3	15.87	24.138		
3,700.0	3,673.2	3,673.2	3,673.2	10.6	8.1	176.57	-0.7	-39.9	398.7	382.4	16.34	24.401		
3,800.0	3,772.0	3,772.0	3,772.0	11.0	8.4	176.69	-0.7	-39.9	414.2	397.4	16.80	24.649		
3,900.0	3,870.8	3,870.8	3,870.8	11.4	8.6	176.81	-0.7	-39.9	429.7	412.5	17.27	24.883		
4,000.0	3,969.6	3,969.6	3,969.6	11.7	8.8	176.92	-0.7	-39.9	445.2	427.5	17.74	25.105		
4,100.0	4,068.4	4,068.4	4,068.4	12.1	9.0	177.03	-0.7	-39.9	460.8	442.6	18.20	25.315		
4,200.0	4,167.1	4,167.1	4,167.1	12.5	9.3	177.13	-0.7	-39.9	476.3	457.6	18.67	25.515		
4,300.0	4,265.9	4,265.9	4,265.9	12.8	9.5	177.22	-0.7	-39.9	491.8	472.7	19.13	25.704		
4,400.0	4,364.7	4,364.7	4,364.7	13.2	9.7	177.30	-0.7	-39.9	507.3	487.7	19.60	25.884		
4,500.0	4,463.5	4,463.5	4,463.5	13.6	9.9	177.38	-0.7	-39.9	522.9	502.8	20.07	26.056		
4,600.0	4,562.3	4,562.3	4,562.3	14.0	10.1	177.46	-0.7	-39.9	538.4	517.9	20.53	26.219		
4,700.0	4,661.1	4,661.1	4,661.1	14.3	10.4	177.53	-0.7	-39.9	553.9	532.9	21.00	26.375		
4,800.0	4,759.8	4,759.8	4,759.8	14.7	10.6	177.60	-0.7	-39.9	569.5	548.0	21.47	26.524		
4,900.0	4,858.6	4,858.6	4,858.6	15.1	10.8	177.66	-0.7	-39.9	585.0	563.0	21.94	26.667		
5,000.0	4,957.4	4,957.4	4,957.4	15.4	11.0	177.72	-0.7	-39.9	600.5	578.1	22.40	26.803		
5,100.0	5,056.2	5,056.2	5,056.2	15.8	11.3	177.78	-0.7	-39.9	616.0	593.2	22.87	26.934		
5,200.0	5,155.0	5,155.0	5,155.0	16.2	11.5	177.83	-0.7	-39.9	631.6	608.2	23.34	27.059		
5,300.0	5,253.8	5,253.8	5,253.8	16.6	11.7	177.88	-0.7	-39.9	647.1	623.3	23.81	27.179		
5,400.0	5,352.6	5,352.6	5,352.6	16.9	11.9	177.93	-0.7	-39.9	662.6	638.4	24.28	27.295		
5,500.0	5,451.3	5,451.3	5,451.3	17.3	12.1	177.98	-0.7	-39.9	678.2	653.4	24.75	27.406		
5,600.0	5,550.1	5,550.1	5,550.1	17.7	12.4	178.03	-0.7	-39.9	693.7	668.5	25.21	27.513		
5,700.0	5,648.9	5,648.9	5,648.9	18.1	12.6	178.07	-0.7	-39.9	709.2	683.6	25.68	27.615		
5,800.0	5,747.7	5,747.7	5,747.7	18.4	12.8	178.11	-0.7	-39.9	724.8	698.6	26.15	27.714		
5,900.0	5,846.5	5,846.5	5,846.5	18.8	13.0	178.15	-0.7	-39.9	740.3	713.7	26.62	27.810		
6,000.0	5,945.3	5,945.3	5,945.3	19.2	13.3	178.19	-0.7	-39.9	755.8	728.8	27.09	27.902		
6,100.0	6,044.0	6,044.0	6,044.0	19.6	13.5	178.23	-0.7	-39.9	771.4	743.8	27.56	27.990		
6,200.0	6,142.8	6,142.8	6,142.8	19.9	13.7	178.26	-0.7	-39.9	786.9	758.9	28.03	28.076		
6,300.0	6,241.6	6,241.6	6,241.6	20.3	13.9	178.29	-0.7	-39.9	802.5	774.0	28.50	28.159		
6,400.0	6,340.4	6,340.4	6,340.4	20.7	14.1	178.33	-0.7	-39.9	818.0	789.0	28.97	28.239		
6,500.0	6,439.2	6,439.2	6,439.2	21.1	14.4	178.36	-0.7	-39.9	833.5	804.1	29.44	28.316		
6,600.0	6,538.0	6,538.0	6,538.0	21.4	14.6	178.39	-0.7	-39.9	849.1	819.2	29.91	28.391		
6,700.0	6,636.8	6,636.8	6,636.8	21.8	14.8	178.42	-0.7	-39.9	864.6	834.2	30.38	28.464		
6,800.0	6,735.5	6,735.5	6,735.5	22.2	15.0	178.44	-0.7	-39.9	880.1	849.3	30.85	28.534		
6,900.0	6,834.3	6,834.3	6,834.3	22.5	15.2	178.47	-0.7	-39.9	895.7	864.4	31.32	28.602		
7,000.0	6,933.1	6,933.1	6,933.1	22.9	15.5	178.50	-0.7	-39.9	911.2	879.4	31.79	28.668		
7,100.0	7,031.9	7,031.9	7,031.9	23.3	15.7	178.52	-0.7	-39.9	926.7	894.5	32.26	28.732		
7,200.0	7,130.7	7,130.7	7,130.7	23.7	15.9	178.55	-0.7	-39.9	942.3	909.6	32.73	28.794		
7,300.0	7,229.5	7,229.5	7,229.5	24.0	16.1	178.57	-0.7	-39.9	957.8	924.6	33.20	28.854		

CC - Min centre to center distance or convergent point, SF - min separation factor, ES - min ellipse separation

Company: Synergy Resources
Project: SEC.10-T4N-R68W
Reference Site: SRC Avex 42-10D Pad Sec.10-T4N-R68W
Site Error: 0.0ft
Reference Well: SRC Avex 42-10D
Well Error: 0.0ft
Reference Wellbore: Wellbore #1
Reference Design: Plan #1 (7-12-11)

Local Co-ordinate Reference: Well SRC Avex 42-10D
TVD Reference: WELL @ 5051.0ft (Original Well Elev)
MD Reference: WELL @ 5051.0ft (Original Well Elev)
North Reference: True
Survey Calculation Method: Minimum Curvature
Output errors are at 2.00 sigma
Database: Landmark
Offset TVD Reference: Offset Datum

Offset Design SRC Avex 42-10D Pad Sec.10-T4N-R68W - SRC Avex 10C (Vert.) - Wellbore #1 - Design #1													Offset Site Error:	0.0 ft
Survey Program: 0-MWD													Offset Well Error:	0.0 ft
Reference	Offset	Semi Major Axis		Distance		Minimum Separation		Warning						
Measured Depth (ft)	Vertical Depth (ft)	Measured Depth (ft)	Vertical Depth (ft)	Reference (ft)	Offset (ft)	Highside Toolface (°)	Offset Wellbore Centre +N/-S (ft)	+E/-W (ft)	Between Centres (ft)	Between Ellipses (ft)	Minimum Separation (ft)	Separation Factor		
7,400.0	7,328.2	7,328.2	7,328.2	24.4	16.4	178.59	-0.7	-39.9	973.4	939.7	33.67	28.912		
7,500.0	7,427.0	7,427.0	7,427.0	24.8	16.6	178.62	-0.7	-39.9	988.9	954.8	34.14	28.969		
7,600.0	7,525.8	7,525.8	7,525.8	25.2	16.8	178.64	-0.7	-39.9	1,004.4	969.8	34.61	29.025		
7,700.0	7,624.6	7,624.6	7,624.6	25.5	17.0	178.66	-0.7	-39.9	1,020.0	984.9	35.08	29.078		
7,800.0	7,723.4	7,723.4	7,723.4	25.9	17.2	178.68	-0.7	-39.9	1,035.5	1,000.0	35.55	29.130		
7,900.0	7,822.2	7,822.2	7,822.2	26.3	17.5	178.70	-0.7	-39.9	1,051.1	1,015.0	36.02	29.181		
8,000.0	7,921.0	7,921.0	7,921.0	26.7	17.7	178.72	-0.7	-39.9	1,066.6	1,030.1	36.49	29.231		
8,100.0	8,019.7	8,019.7	8,019.7	27.1	17.9	178.74	-0.7	-39.9	1,082.1	1,045.2	36.96	29.279		
8,181.2	8,100.0	8,100.0	8,100.0	27.4	18.1	178.75	-0.7	-39.9	1,094.8	1,057.4	37.34	29.317		

Company: Synergy Resources
Project: SEC.10-T4N-R68W
Reference Site: SRC Avex 42-10D Pad Sec.10-T4N-R68W
Site Error: 0.0ft
Reference Well: SRC Avex 42-10D
Well Error: 0.0ft
Reference Wellbore: Wellbore #1
Reference Design: Plan #1 (7-12-11)

Local Co-ordinate Reference: Well SRC Avex 42-10D
TVD Reference: WELL @ 5051.0ft (Original Well Elev)
MD Reference: WELL @ 5051.0ft (Original Well Elev)
North Reference: True
Survey Calculation Method: Minimum Curvature
Output errors are at 2.00 sigma
Database: Landmark
Offset TVD Reference: Offset Datum

Offset Design SRC Avex 42-10D Pad Sec.10-T4N-R68W - SRC Avex 41-10D - Wellbore #1 - Plan #1 (7-12-11)													Offset Site Error:	0.0 ft
Survey Program: 0-MWD													Offset Well Error:	0.0 ft
Reference		Offset		Semi Major Axis			Distance		Minimum		Separation		Warning	
Measured Depth (ft)	Vertical Depth (ft)	Measured Depth (ft)	Vertical Depth (ft)	Reference (ft)	Offset (ft)	Highside Toolface (°)	Offset Wellbore Centre +N/-S (ft)	+E/-W (ft)	Between Centres (ft)	Between Ellipses (ft)	Separation (ft)	Factor		
0.0	0.0	0.0	0.0	0.0	0.0	-92.12	-0.7	-19.8	19.8	19.8	0.00	N/A		
100.0	100.0	100.0	100.0	0.1	0.1	-92.12	-0.7	-19.8	19.8	19.6	0.22	88.130		
200.0	200.0	200.0	200.0	0.3	0.3	-92.12	-0.7	-19.8	19.8	19.1	0.67	29.377		
300.0	300.0	300.0	300.0	0.6	0.6	-92.12	-0.7	-19.8	19.8	18.7	1.12	17.626		
400.0	400.0	400.0	400.0	0.8	0.8	-92.12	-0.7	-19.8	19.8	18.2	1.57	12.590		
500.0	500.0	500.0	500.0	1.0	1.0	-92.12	-0.7	-19.8	19.8	17.8	2.02	9.792		
600.0	600.0	600.0	600.0	1.2	1.2	-92.12	-0.7	-19.8	19.8	17.3	2.47	8.012		
700.0	700.0	700.0	700.0	1.5	1.5	-92.12	-0.7	-19.8	19.8	16.9	2.92	6.779		
800.0	800.0	800.1	800.1	1.7	1.7	-89.63	0.1	-19.6	19.6	16.3	3.37	5.827		
900.0	900.0	900.1	900.0	1.9	1.9	-81.97	2.7	-19.2	19.4	15.6	3.82	5.071		
905.6	905.6	905.6	905.6	1.9	1.9	153.39	2.9	-19.2	19.4	15.5	3.84	5.042 CC, ES		
1,000.0	1,000.0	999.9	999.8	2.1	2.1	166.16	7.0	-18.4	20.6	16.3	4.25	4.841 SF		
1,100.0	1,100.0	1,099.5	1,099.2	2.3	2.4	-178.68	13.0	-17.4	25.2	20.5	4.66	5.402		
1,200.0	1,199.9	1,198.7	1,198.0	2.5	2.6	-166.91	20.6	-16.0	33.8	28.7	5.09	6.633		
1,300.0	1,299.7	1,298.0	1,296.9	2.7	2.8	-158.93	29.5	-13.8	45.3	39.8	5.52	8.206		
1,400.0	1,399.4	1,397.1	1,395.5	2.9	3.1	-153.26	39.0	-9.9	58.7	52.8	5.95	9.871		
1,500.0	1,498.9	1,495.8	1,493.5	3.2	3.3	-149.03	49.3	-4.6	74.0	67.6	6.40	11.571		
1,600.0	1,598.3	1,594.2	1,591.1	3.4	3.6	-145.75	60.1	2.3	91.1	84.2	6.86	13.275		
1,700.0	1,697.4	1,692.2	1,688.0	3.7	3.9	-143.13	71.6	10.7	109.9	102.5	7.35	14.958		
1,794.2	1,790.5	1,784.0	1,778.7	4.0	4.2	-141.08	83.0	19.9	129.1	121.3	7.82	16.504		
1,800.0	1,796.3	1,789.7	1,784.3	4.0	4.2	-140.98	83.7	20.5	130.4	122.5	7.85	16.599		
1,900.0	1,895.1	1,886.9	1,880.0	4.3	4.5	-139.06	96.4	31.8	151.8	143.4	8.40	18.084		
2,000.0	1,993.9	1,984.1	1,975.4	4.6	4.9	-137.14	109.7	44.4	173.7	164.8	8.96	19.386		
2,100.0	2,092.7	2,081.5	2,071.1	4.9	5.2	-135.58	123.2	57.2	195.8	186.2	9.54	20.518		
2,200.0	2,191.4	2,178.9	2,166.7	5.3	5.6	-134.34	136.6	70.1	218.0	207.8	10.13	21.507		
2,300.0	2,290.2	2,276.3	2,262.3	5.6	5.9	-133.33	150.0	82.9	240.2	229.5	10.74	22.376		
2,400.0	2,389.0	2,373.7	2,357.9	6.0	6.3	-132.49	163.4	95.7	262.5	251.2	11.34	23.142		
2,500.0	2,487.8	2,471.1	2,453.6	6.3	6.7	-131.78	176.8	108.6	284.9	272.9	11.96	23.821		
2,600.0	2,586.6	2,568.5	2,549.2	6.7	7.1	-131.17	190.3	121.4	307.3	294.7	12.58	24.425		
2,700.0	2,685.4	2,666.0	2,644.8	7.0	7.4	-130.65	203.7	134.2	329.7	316.5	13.21	24.965		
2,800.0	2,784.2	2,763.4	2,740.4	7.4	7.8	-130.19	217.1	147.1	352.2	338.3	13.84	25.450		
2,900.0	2,882.9	2,860.8	2,836.1	7.7	8.2	-129.79	230.5	159.9	374.6	360.2	14.47	25.888		
3,000.0	2,981.7	2,958.2	2,931.7	8.1	8.6	-129.43	243.9	172.7	397.1	382.0	15.11	26.285		
3,100.0	3,080.5	3,055.6	3,027.3	8.4	9.0	-129.11	257.3	185.6	419.6	403.9	15.75	26.645		
3,200.0	3,179.3	3,153.0	3,122.9	8.8	9.4	-128.82	270.8	198.4	442.1	425.7	16.39	26.974		
3,300.0	3,278.1	3,250.4	3,218.6	9.2	9.8	-128.57	284.2	211.2	464.7	447.6	17.04	27.275		
3,400.0	3,376.9	3,347.8	3,314.2	9.5	10.2	-128.33	297.6	224.0	487.2	469.5	17.68	27.552		
3,500.0	3,475.6	3,445.3	3,409.8	9.9	10.6	-128.12	311.0	236.9	509.7	491.4	18.33	27.807		
3,600.0	3,574.4	3,542.7	3,505.4	10.3	11.0	-127.92	324.4	249.7	532.3	513.3	18.98	28.042		
3,700.0	3,673.2	3,640.1	3,601.1	10.6	11.4	-127.74	337.9	262.5	554.8	535.2	19.63	28.260		
3,800.0	3,772.0	3,737.5	3,696.7	11.0	11.8	-127.58	351.3	275.4	577.4	557.1	20.28	28.463		
3,900.0	3,870.8	3,834.9	3,792.3	11.4	12.2	-127.42	364.7	288.2	599.9	579.0	20.94	28.651		
4,000.0	3,969.6	3,932.3	3,887.9	11.7	12.6	-127.28	378.1	301.0	622.5	600.9	21.59	28.827		
4,100.0	4,068.4	4,029.7	3,983.6	12.1	13.0	-127.15	391.5	313.9	645.0	622.8	22.25	28.991		
4,200.0	4,167.1	4,127.1	4,079.2	12.5	13.4	-127.02	405.0	326.7	667.6	644.7	22.91	29.145		
4,300.0	4,265.9	4,224.5	4,174.8	12.8	13.8	-126.91	418.4	339.5	690.2	666.6	23.56	29.290		
4,400.0	4,364.7	4,322.0	4,270.4	13.2	14.2	-126.80	431.8	352.4	712.7	688.5	24.22	29.425		
4,500.0	4,463.5	4,419.4	4,366.1	13.6	14.6	-126.70	445.2	365.2	735.3	710.4	24.88	29.553		
4,600.0	4,562.3	4,516.8	4,461.7	14.0	15.0	-126.60	458.6	378.0	757.9	732.3	25.54	29.674		
4,700.0	4,661.1	4,614.2	4,557.3	14.3	15.4	-126.52	472.0	390.9	780.4	754.2	26.20	29.788		
4,800.0	4,759.8	4,711.6	4,652.9	14.7	15.8	-126.43	485.5	403.7	803.0	776.2	26.86	29.895		
4,900.0	4,858.6	4,809.0	4,748.6	15.1	16.2	-126.35	498.9	416.5	825.6	798.1	27.52	29.997		

CC - Min centre to center distance or convergent point, SF - min separation factor, ES - min ellipse separation

Company: Synergy Resources
Project: SEC.10-T4N-R68W
Reference Site: SRC Avex 42-10D Pad Sec.10-T4N-R68W
Site Error: 0.0ft
Reference Well: SRC Avex 42-10D
Well Error: 0.0ft
Reference Wellbore: Wellbore #1
Reference Design: Plan #1 (7-12-11)

Local Co-ordinate Reference: Well SRC Avex 42-10D
TVD Reference: WELL @ 5051.0ft (Original Well Elev)
MD Reference: WELL @ 5051.0ft (Original Well Elev)
North Reference: True
Survey Calculation Method: Minimum Curvature
Output errors are at 2.00 sigma
Database: Landmark
Offset TVD Reference: Offset Datum

Offset Design SRC Avex 42-10D Pad Sec.10-T4N-R68W - SRC Avex 41-10D - Wellbore #1 - Plan #1 (7-12-11)													Offset Site Error:	0.0 ft
Survey Program: 0-MWD													Offset Well Error:	0.0 ft
Reference		Offset		Semi Major Axis			Distance		Minimum Separation				Warning	
Measured Depth (ft)	Vertical Depth (ft)	Measured Depth (ft)	Vertical Depth (ft)	Reference (ft)	Offset (ft)	Highside Toolface (°)	Offset Wellbore Centre +N/-S (ft)	+E/-W (ft)	Between Centres (ft)	Between Ellipses (ft)	Minimum Separation (ft)	Separation Factor		
5,000.0	4,957.4	4,906.4	4,844.2	15.4	16.6	-126.27	512.3	429.3	848.2	820.0	28.18	30.094		
5,100.0	5,056.2	5,003.8	4,939.8	15.8	17.0	-126.20	525.7	442.2	870.8	841.9	28.85	30.186		
5,200.0	5,155.0	5,101.2	5,035.4	16.2	17.4	-126.13	539.1	455.0	893.4	863.8	29.51	30.273		
5,300.0	5,253.8	5,198.7	5,131.1	16.6	17.8	-126.07	552.6	467.8	915.9	885.8	30.17	30.356		
5,400.0	5,352.6	5,296.1	5,226.7	16.9	18.2	-126.01	566.0	480.7	938.5	907.7	30.84	30.435		
5,500.0	5,451.3	5,393.5	5,322.3	17.3	18.7	-125.95	579.4	493.5	961.1	929.6	31.50	30.511		
5,600.0	5,550.1	5,490.9	5,417.9	17.7	19.1	-125.89	592.8	506.3	983.7	951.5	32.16	30.583		
5,700.0	5,648.9	5,588.3	5,513.6	18.1	19.5	-125.84	606.2	519.2	1,006.3	973.5	32.83	30.652		
5,800.0	5,747.7	5,685.7	5,609.2	18.4	19.9	-125.79	619.7	532.0	1,028.9	995.4	33.49	30.718		
5,900.0	5,846.5	5,783.1	5,704.8	18.8	20.3	-125.74	633.1	544.8	1,051.5	1,017.3	34.16	30.781		
6,000.0	5,945.3	5,880.5	5,800.5	19.2	20.7	-125.69	646.5	557.7	1,074.1	1,039.2	34.83	30.841		
6,100.0	6,044.0	5,977.9	5,896.1	19.6	21.1	-125.65	659.9	570.5	1,096.6	1,061.2	35.49	30.899		
6,200.0	6,142.8	6,075.4	5,991.7	19.9	21.5	-125.60	673.3	583.3	1,119.2	1,083.1	36.16	30.955		
6,300.0	6,241.6	6,172.8	6,087.3	20.3	21.9	-125.56	686.7	596.1	1,141.8	1,105.0	36.82	31.008		
6,400.0	6,340.4	6,270.2	6,183.0	20.7	22.3	-125.52	700.2	609.0	1,164.4	1,126.9	37.49	31.059		
6,500.0	6,439.2	6,367.6	6,278.6	21.1	22.7	-125.48	713.6	621.8	1,187.0	1,148.9	38.16	31.109		
6,600.0	6,538.0	6,465.0	6,374.2	21.4	23.1	-125.45	727.0	634.6	1,209.6	1,170.8	38.82	31.156		
6,700.0	6,636.8	6,562.4	6,469.8	21.8	23.5	-125.41	740.4	647.5	1,232.2	1,192.7	39.49	31.202		
6,800.0	6,735.5	6,659.8	6,565.5	22.2	23.9	-125.38	753.8	660.3	1,254.8	1,214.6	40.16	31.246		
6,900.0	6,834.3	6,757.2	6,661.1	22.5	24.4	-125.34	767.3	673.1	1,277.4	1,236.6	40.83	31.289		
7,000.0	6,933.1	6,854.6	6,756.7	22.9	24.8	-125.31	780.7	686.0	1,300.0	1,258.5	41.49	31.330		
7,100.0	7,031.9	6,952.1	6,852.3	23.3	25.2	-125.28	794.1	698.8	1,322.6	1,280.4	42.16	31.369		
7,200.0	7,130.7	7,049.5	6,948.0	23.7	25.6	-125.25	807.5	711.6	1,345.2	1,302.3	42.83	31.407		
7,300.0	7,229.5	7,146.9	7,043.6	24.0	26.0	-125.22	820.9	724.5	1,367.8	1,324.3	43.50	31.444		
7,400.0	7,328.2	7,244.3	7,139.2	24.4	26.4	-125.19	834.3	737.3	1,390.4	1,346.2	44.17	31.480		
7,500.0	7,427.0	7,341.7	7,234.8	24.8	26.8	-125.17	847.8	750.1	1,413.0	1,368.1	44.84	31.514		
7,600.0	7,525.8	7,439.1	7,330.5	25.2	27.2	-125.14	861.2	762.9	1,435.6	1,390.1	45.50	31.548		
7,700.0	7,624.6	7,536.5	7,426.1	25.5	27.6	-125.11	874.6	775.8	1,458.2	1,412.0	46.17	31.580		
7,800.0	7,723.4	7,633.9	7,521.7	25.9	28.0	-125.09	888.0	788.6	1,480.8	1,433.9	46.84	31.611		
7,900.0	7,822.2	7,731.3	7,617.3	26.3	28.4	-125.07	901.4	801.4	1,503.4	1,455.8	47.51	31.642		
8,000.0	7,921.0	7,828.8	7,713.0	26.7	28.8	-125.04	914.9	814.3	1,526.0	1,477.8	48.18	31.671		
8,100.0	8,019.7	7,926.2	7,808.6	27.1	29.3	-125.02	928.3	827.1	1,548.6	1,499.7	48.85	31.700		
8,181.2	8,100.0	8,005.3	7,886.3	27.4	29.6	-125.00	939.2	837.5	1,566.9	1,517.5	49.40	31.722		

Company: Synergy Resources
Project: SEC.10-T4N-R68W
Reference Site: SRC Avex 42-10D Pad Sec.10-T4N-R68W
Site Error: 0.0ft
Reference Well: SRC Avex 42-10D
Well Error: 0.0ft
Reference Wellbore: Wellbore #1
Reference Design: Plan #1 (7-12-11)

Local Co-ordinate Reference: Well SRC Avex 42-10D
TVD Reference: WELL @ 5051.0ft (Original Well Elev)
MD Reference: WELL @ 5051.0ft (Original Well Elev)
North Reference: True
Survey Calculation Method: Minimum Curvature
Output errors are at: 2.00 sigma
Database: Landmark
Offset TVD Reference: Offset Datum

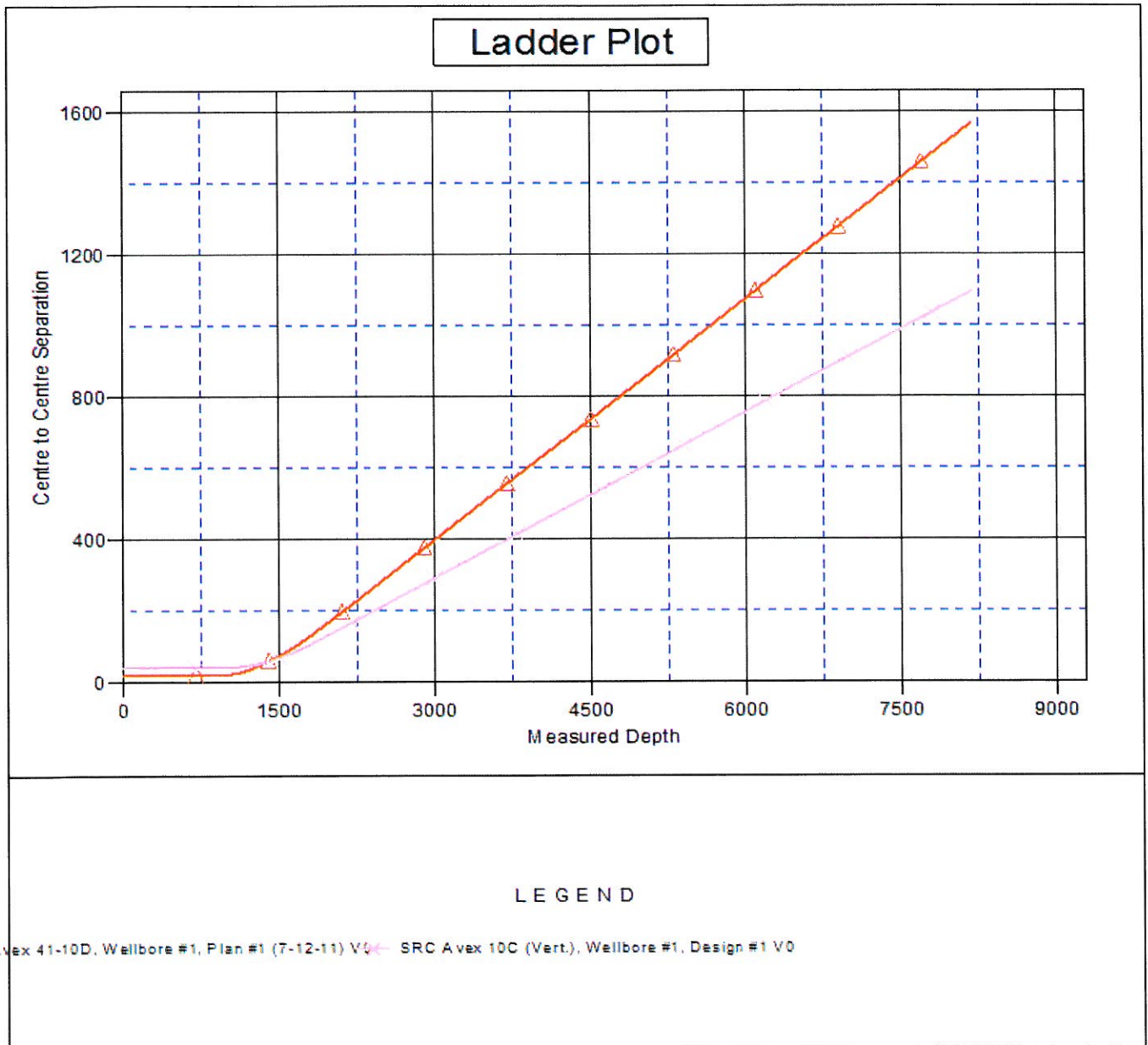
Reference Depths are relative to WELL @ 5051.0ft (Original Well Elev) Coordinates are relative to: SRC Avex 42-10D

Offset Depths are relative to Offset Datum

Coordinate System is US State Plane 1983, Colorado Northern Zone

Central Meridian is -105.500000 °

Grid Convergence at Surface is: 0.33°



Company: Synergy Resources
Project: SEC.10-T4N-R68W
Reference Site: SRC Avex 42-10D Pad Sec.10-T4N-R68W
Site Error: 0.0ft
Reference Well: SRC Avex 42-10D
Well Error: 0.0ft
Reference Wellbore: Wellbore #1
Reference Design: Plan #1 (7-12-11)

Local Co-ordinate Reference: Well SRC Avex 42-10D
TVD Reference: WELL @ 5051.0ft (Original Well Elev)
MD Reference: WELL @ 5051.0ft (Original Well Elev)
North Reference: True
Survey Calculation Method: Minimum Curvature
Output errors are at: 2.00 sigma
Database: Landmark
Offset TVD Reference: Offset Datum

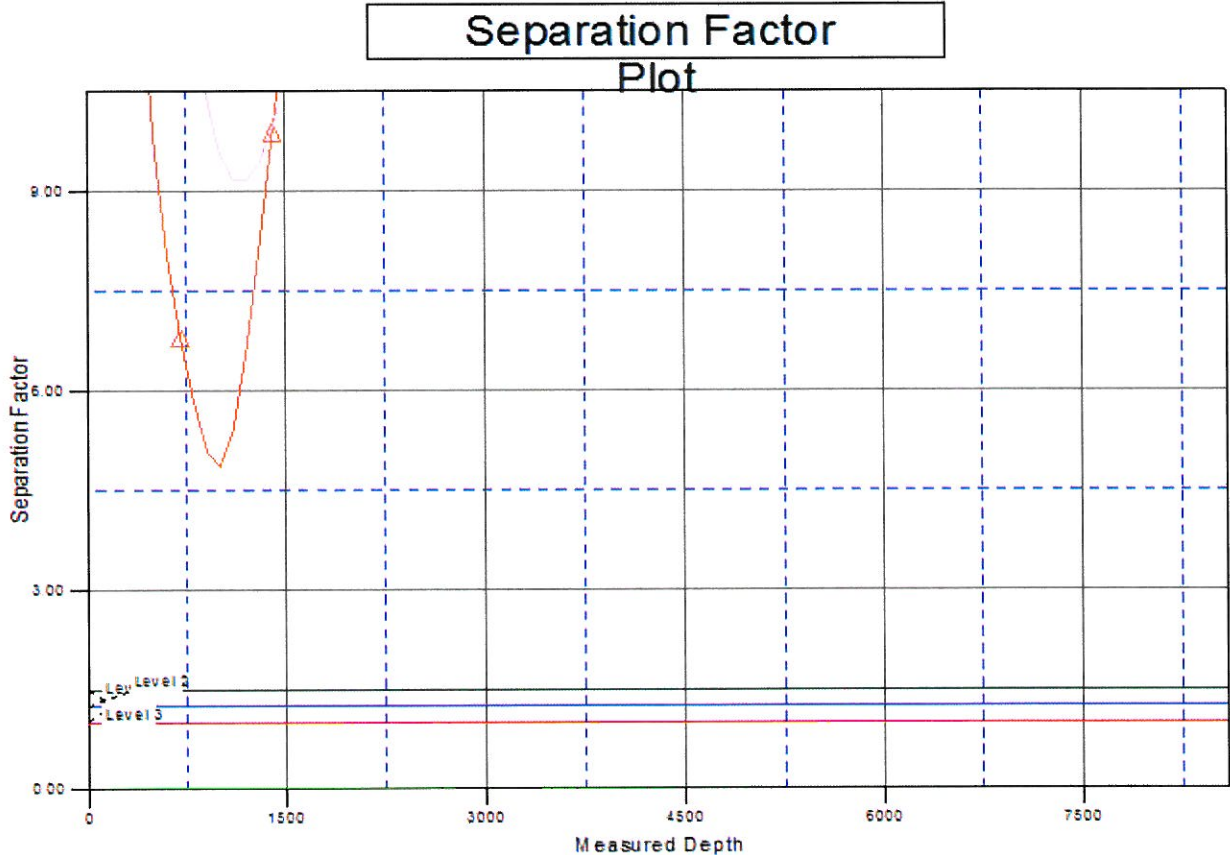
Reference Depths are relative to WELL @ 5051.0ft (Original Well Elev) Coordinates are relative to: SRC Avex 42-10D

Offset Depths are relative to Offset Datum

Coordinate System is US State Plane 1983, Colorado Northern Zone

Central Meridian is -105.500000 °

Grid Convergence at Surface is: 0.33°



LEGEND

Avex 41-10D, Wellbore #1, Plan #1 (7-12-11) V0 ← SRC Avex 10C (Vert), Wellbore #1, Design #1 V0