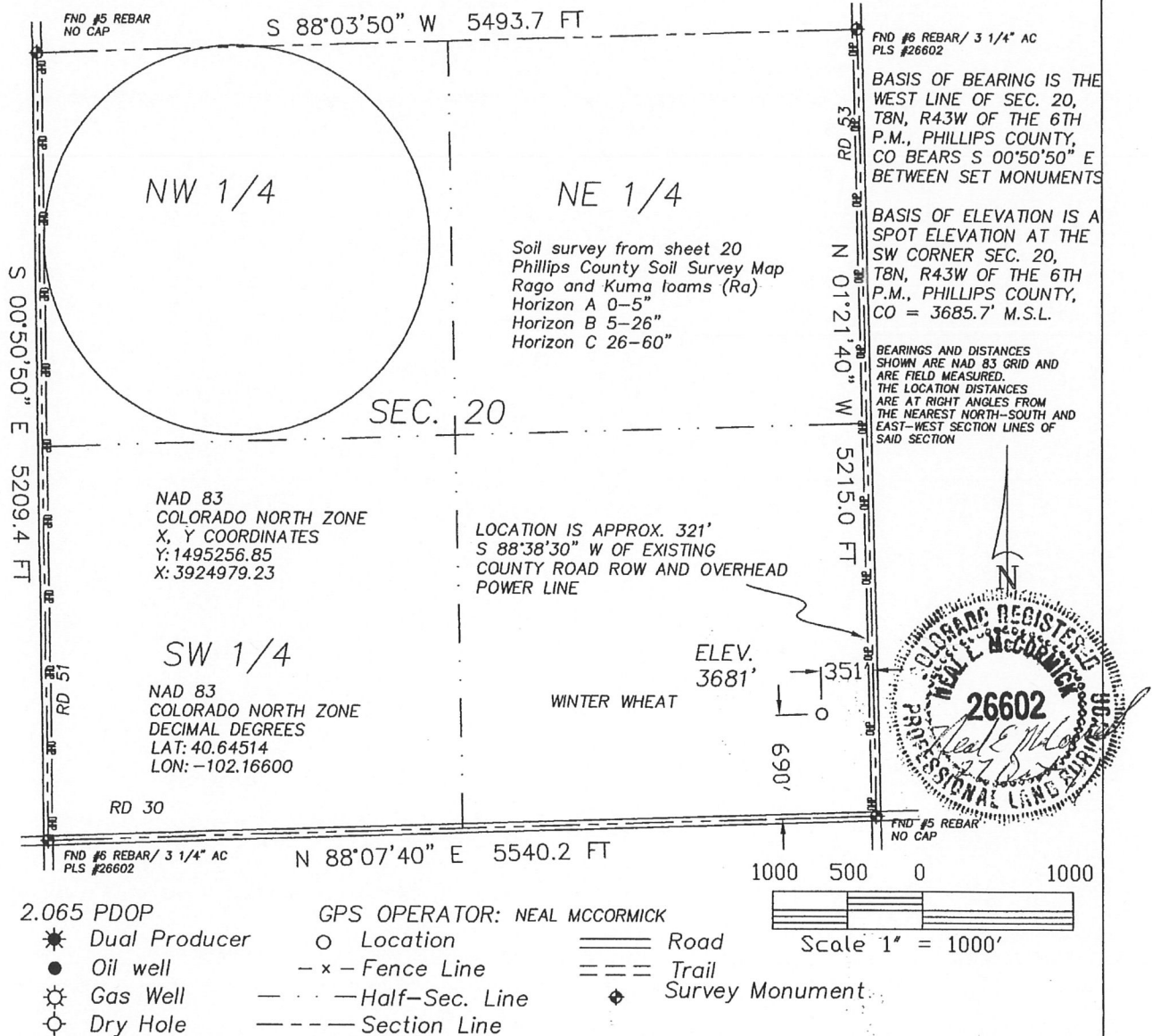


There are no visible improvements within 400 feet of the location, except an existing county road and overhead power line.



 GREAT PLAINS
SURVEYING, INC.

20575 C.R. 21 Phone 970-774-3602
Haxtun, CO 80731 Fax 970-774-3601

DATE OF FIELD WORK: 15 OCTOBER 2011	DATE OF DRAWING: 27 OCTOBER 2011
STONER 843-20-44	
SE 1/4 SE 1/4 SEC. 20, T8N, R43W	
BLACK RAVEN ENERGY, INC.	
PHILLIPS COUNTY, COLORADO	

W208N43GPS

9402-260