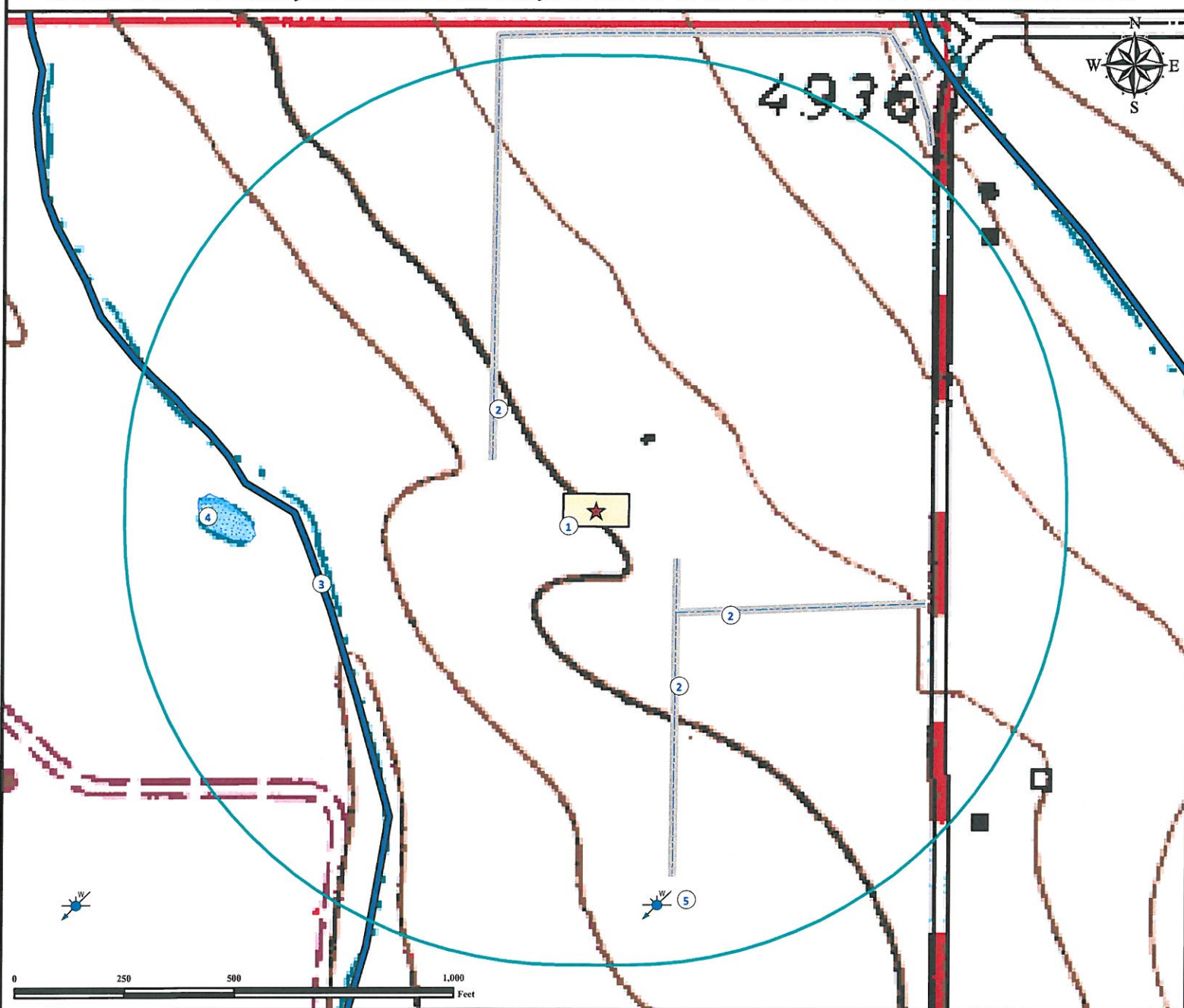


Hydrology Map

HERGERT 1-35 FACILITY

NE¼ NE¼ SECTION 35, TOWNSHIP 7 NORTH, RANGE 67 WEST OF THE 6TH PRINCIPAL MERIDIAN



1. Proposed HERGERT 1-35 FACILITY.

2. Concrete ditches are ±262' NW, ±215' SE and ±296' SE.

3. Canal is ±688' W.

4. Intermittent pond is ±980' W. Feature dry at time of mapping.

5. Water well (#13388) is ±910' SE. Feature not in this location per field verify.

Legend

- | | | |
|---------------|------------------|-------------------|
| Proposed Well | Disturbance Area | Canal |
| Water Well | 1000' Radius | Concrete Ditch |
| | | Intermittent Pond |

Reference Location

** All Measurements are Made from Reference Point ★ **
Lat: 40.534896° Long: -104.853820° (NAD83)
Elevation: 4902 Feet



Use our resources to find yours!
www.petro-fs.com
(303) 928-7128

Field Date: 09/27/2011
Drafting Date: 10/27/2011
Drafter: DMM
Checked By: BHF

Data Sources:
TOPO courtesy USGS
Water wells courtesy CDOWR
Intermittent pond courtesy NHD

Prepared for:

