

**HALLIBURTON**

---

**PINE RIDGE OIL & GAS LLC**

---

**Blue Marlin 44-19  
FLORENCE CANON CITY  
Fremont County , Colorado**

**Cement Intermediate Casing**  
**23-Oct-2011**

**Job Site Documents**

*The Road to Excellence Starts with Safety*

Sold To #: 356801		Ship To #: 2880108		Quote #:		Sales Order #: 0	
Customer: PINE RIDGE OIL & GAS LLC				Customer Rep: ROE, DUANE			
Well Name: Blue Marlin			Well #: 44-19		API/UWI #: 05-043-06213		
Field: FLORENCE		City (SAP):		County/Parish: Fremont		State: Colorado	
CANON CITY		WILLIAMSBURG					
Legal Description: Section SESE19 Township 19S Range 69W							
Lat: N 38.376 deg. OR N 38 deg. 22 min. 35.141 secs.				Long: W 105.148 deg. OR W -106 deg. 51 min. 6.098 secs.			
Contractor: ?		Rig/Platform Name/Num: ?????					
Job Purpose: Cement Intermediate Casing							
Well Type: Development Well				Job Type: Cement Intermediate Casing			
Sales Person: AARON, WESLEY				Srv Supervisor: NIELSON, BRANDON MBU ID Emp #: 479703			

### Job Personnel

HES Emp Name	Exp Hrs	Emp #	HES Emp Name	Exp Hrs	Emp #	HES Emp Name	Exp Hrs	Emp #
BRICKER, DANIEL Z	3.5	475710	NIELSON, BRANDON K	3.5	479703	PICKELL, CHRISTOPHER Lee	3.5	396838

### Equipment

HES Unit #	Distance-1 way	HES Unit #	Distance-1 way	HES Unit #	Distance-1 way	HES Unit #	Distance-1 way
10951212	192 mile	11064535	192 mile	11398490	192 mile		

### Job Hours

Date	On Location Hours	Operating Hours	Date	On Location Hours	Operating Hours	Date	On Location Hours	Operating Hours
10/23/2011	3.5	1						
TOTAL		Total is the sum of each column separately						

### Job

### Job Times

Formation Name						Job Times			
Formation Depth (MD)		Top	Bottom			Called Out	Date	Time	Time Zone
Form Type		BHST			On Location	23 - Oct - 2011	08:30	CST	
Job depth MD		4112. ft		Job Depth TVD	4112. ft	Job Started	23 - Oct - 2011	09:55	CST
Water Depth		Wk Ht Above Floor		5. ft	Job Completed	23 - Oct - 2011	10:50	CST	
Perforation Depth (MD)		From	To			Departed Loc	23 - Oct - 2011	12:00	CST

### Well Data

Description	New / Used	Max pressure psig	Size in	ID in	Weight lbm/ft	Thread	Grade	Top MD ft	Bottom MD ft	Top TVD ft	Bottom TVD ft
Open Hole				8.75				820.	3100.		
Intermediate Casing	Unknown		7.	6.366	23.		J-55		3100.		
Surface Casing	Unknown		9.625	8.097	24.		J-55		820.		

### Tools and Accessories

Type	Size	Qty	Make	Depth	Type	Size	Qty	Make	Depth	Type	Size	Qty	Make
Guide Shoe					Packer					Top Plug	7	1	HWE
Float Shoe					Bridge Plug					Bottom Plug			
Float Collar					Retainer					SSR plug set			
Insert Float										Plug Container			
Stage Tool										Centralizers			

### Miscellaneous Materials

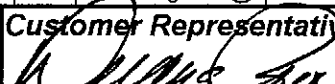
Gelling Agt	Conc	Surfactant	Conc	Acid Type	Qty	Conc	%
Treatment Fld	Conc	Inhibitor	Conc	Sand Type	Size	Qty	

### Fluid Data

Stage/Plug #: 1	Stage Type	Fluid Name	Qty	Qty uom	Mixing Density lbm/gal	Yield ft <sup>3</sup> /sk	Mix Fluid Gal/sk	Rate bbl/min	Total Mix Fluid Gal/sk
Fluid #									

# HALLIBURTON

## Cementing Job Summary

1	MUD FLUSH III	MUD FLUSH III - SBM (528788)	5.00	bbl	8.4	.0	.0	4.0	
2	Varicem 13#	VARICEM (TM) CEMENT (452009)	45.0	sacks	13.	1.72	8.73	5.0	8.73
8.73 Gal		FRESH WATER							
3	Water Displacement		160.41	bbl	8.33	.0	.0	5.0	
Calculated Values		Pressures		Volumes					
Displacement		Shut In: Instant		Lost Returns		Cement Slurry		Pad	
Top Of Cement		5 Min		Cement Returns		Actual Displacement		Treatment	
Frac Gradient		15 Min		Spacers		Load and Breakdown		Total Job	
Rates									
Circulating		Mixing		Displacement		Avg. Job			
Cement Left In Pipe	Amount	40 ft	Reason	Shoe Joint					
Frac Ring # 1 @	ID	Frac ring # 2 @	ID	Frac Ring # 3 @	ID	Frac Ring # 4 @	ID		
The Information Stated Herein Is Correct				Customer Representative Signature					
				 11307-D 10/23/11					

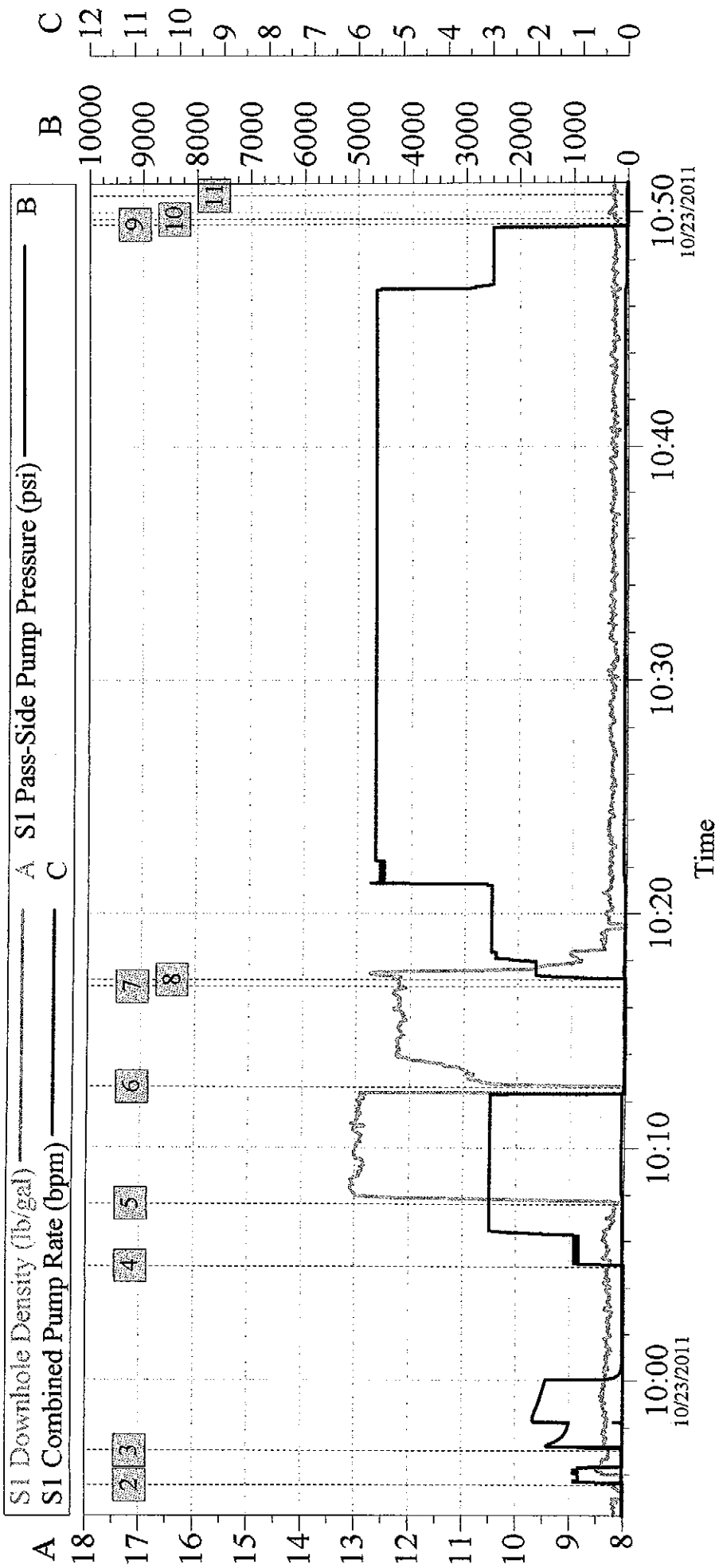
*The Road to Excellence Starts with Safety*

Sold To #: 356801		Ship To #: 2880108		Quote #:		Sales Order #: 0	
Customer: PINE RIDGE OIL & GAS LLC				Customer Rep: ROE, DUANE			
Well Name: Blue Marlin		Well #: 44-19		API/UWI #: 05-043-06213			
Field: FLORENCE		City (SAP): WILLIAMSBURG		County/Parish: Fremont		State: Colorado	
CANON CITY							
Legal Description: Section SESE19 Township 19S Range 69W							
Lat: N 38.376 deg. OR N 38 deg. 22 min. 35.141 secs.				Long: W 105.148 deg. OR W -106 deg. 51 min. 6.098 secs.			
Contractor: ?		Rig/Platform Name/Num: ?????					
Job Purpose: Cement Intermediate Casing						Ticket Amount:	
Well Type: Development Well				Job Type: Cement Intermediate Casing			
Sales Person: AARON, WESLEY				Srv Supervisor: NIELSON, BRANDON		MBU ID Emp #: 479703	

Activity Description	Date/Time	Cht #	Rate bbl/min	Volume bbl		Pressure psig		Comments
				Stage	Total	Tubing	Casing	
Test Lines	10/23/2011 09:57							PRESSURE TEST TO 1500 PSI
Pump Spacer 1	10/23/2011 10:04			5			45.0	PUMP 5 BBL MUD FLUSH MIXED WITH RIG WATER
Pump Cement	10/23/2011 10:07			13.7	18.7		45.0	45 SKS VARICEM MIXED WITH RIG WATER @ 13 PPG
Drop Top Plug	10/23/2011 11:13							DROPPED PLUG WHILE SHUT DOWN PUMPED THROUGH SWAGE
Pump Displacement	10/23/2011 11:13			160	178.7		48.0	RIG WATER
Bump Plug	10/23/2011 11:13							SHUT DOWN WITH 24 PSI ON WELL DO TO LOW OUTSIDE HYDROSTATIC PRESSURE THERE WAS NO BUMP PRESSURE.
Other	10/23/2011 11:13							FLOATS HELD
End Job	10/23/2011 11:13							

# COMET RIDGE BLUE MARLIN 44-19

## 7 IN CASING JOB



Global Event Log					
Intersection		SPPP	Intersection		SPPP
1	Starting Job	09:28:46 16.00	2	Start Job	09:55:32 14.00
4	Pump Spacer 1	10:04:54 18.00	5	Pump Cement	10:07:35 20.00
7	Drop Top Plug	10:16:52 16.00	8	Pump Displacement	10:17:09 16.00
10	CHECK FLOATS	10:49:43 16.00	11	End Job	10:50:43 15.00
			3	Test Lines	09:57:00 18.00
			6	Shutdown	10:12:34 17.00
			9	Bump Plug	10:49:31 18.00
			12	Ending Job	11:01:13 209.0

Customer: Well Description: Job Date: 23-Oct-2011 Sales Order #: 0