

Company		Vallejo 32-19		Company		Pioneer Natural Resources	
Well		Vallejo 32-19		Well		Vallejo 32-19	
Field		Purgatorie River		Field		Purgatorie River	
County		Las Animas		County		Las Animas	
State		CO		State		CO	
Location:				API # : 05 071 09338 00			
SEC 19 TWP 33S RGE 67W				1637FNL & 1450' FEL			
Permanent Datum		Ground level		Elevation		Other Services	
Log Measured From		Kelly bushing 4AGL		K.B. 7345		DEVI	
Drilling Measured From		Kelly bushing		D.F. 7341			
Date		10-24-11		Elevation			
Run Number		Two		G.L. 7341			
Depth Driller		1965					
Depth Logger		1555					
Bottom Logged Interval		1550					
Top Log Interval		160 FT					
Open Hole Size		7 7/8					
Type Fluid		water					
Density / Viscosity		///					
Max. Recorded Temp.		///					
Estimated Cement Top		///					
Time Well Ready		7:30 A.M					
Time Logger on Bottom		7:45 A.m					
Equipment Number		T601					
Location		Trinidad					
Recorded By		T. Patterson					
Witnessed By		Curtis Adam					
Borehole Record				Tubing Record			
Run Number	Bit	From	To	Size	Weight	From	To
Casing Record	Size	Wgt/Ft	Top	Bottom			
Surface String	8 5/8		0	336			
Prot. String							
Production String	5 1/2	15	0	1925			
Liner							

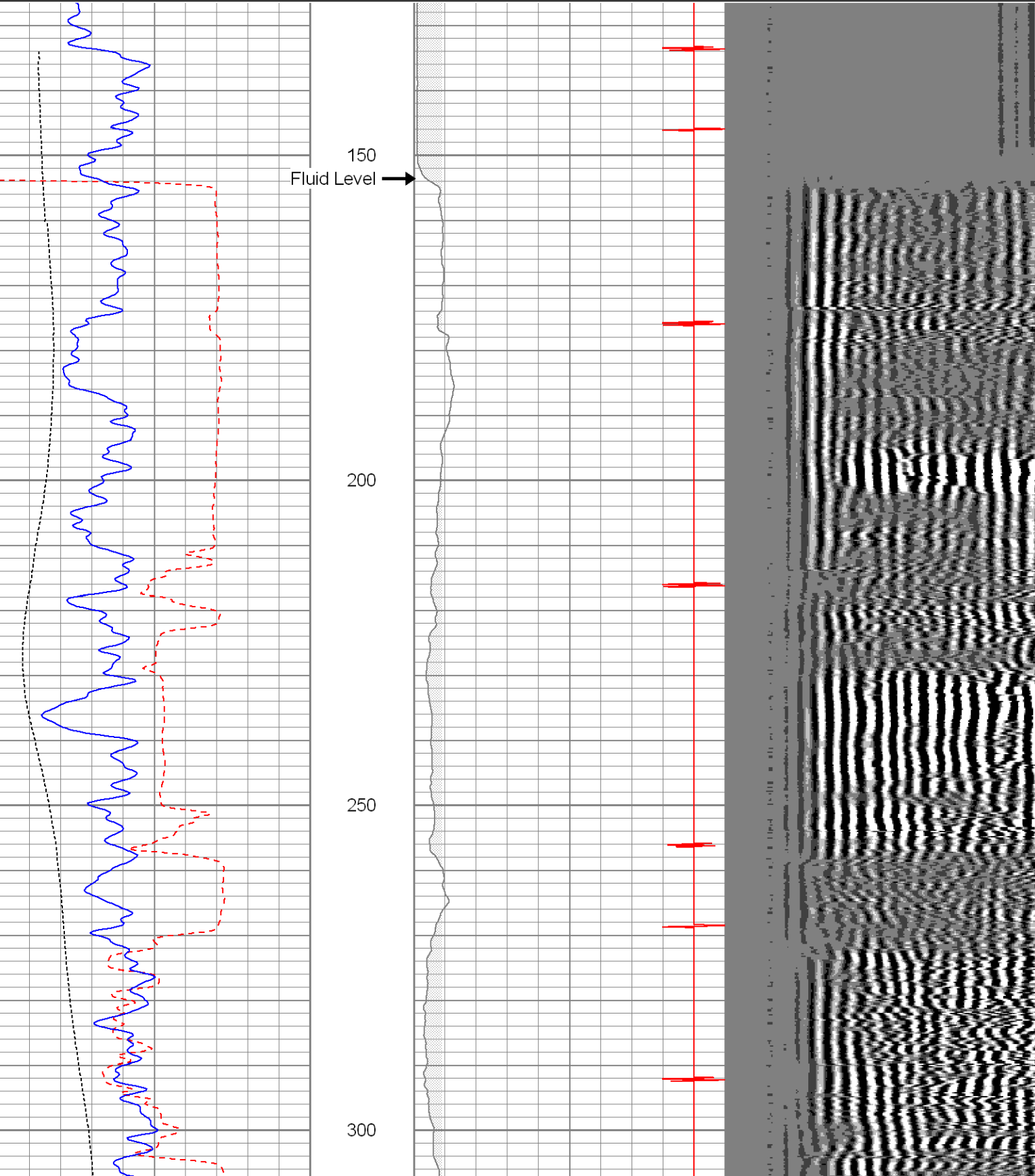
<<< Fold Here >>>

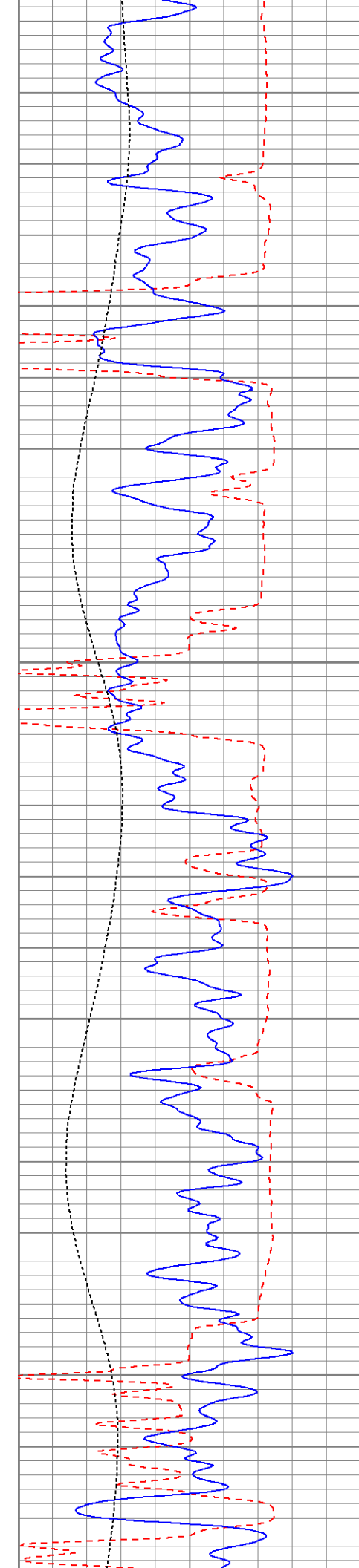
All interpretations are opinions based on inferences from electrical or other measurements and we cannot and do not guarantee the accuracy or correctness of any interpretation, and we shall not, except in the case of gross or willful negligence on our part, be liable or responsible for any loss, costs, damages, or expenses incurred or sustained by anyone resulting from any interpretation made by any of our officers, agents or employees. These interpretations are also subject to our general terms and conditions set out in our current Price Schedule.

Comments

Database File: vallejo 32-19cbl102411.db
Dataset Pathname: pass5
Presentation Format: cblidig
Dataset Creation: Mon Oct 24 08:29:45 2011 by Log SCH 110722
Charted by: Depth in Feet scaled 1:240

440	TT3 (usec)	220	0	AMP3 (mV)	100	200	Variable Density	1200
0	GR (GAPI)	200	18	CCL	-2			
0	DEVI (°)	10						



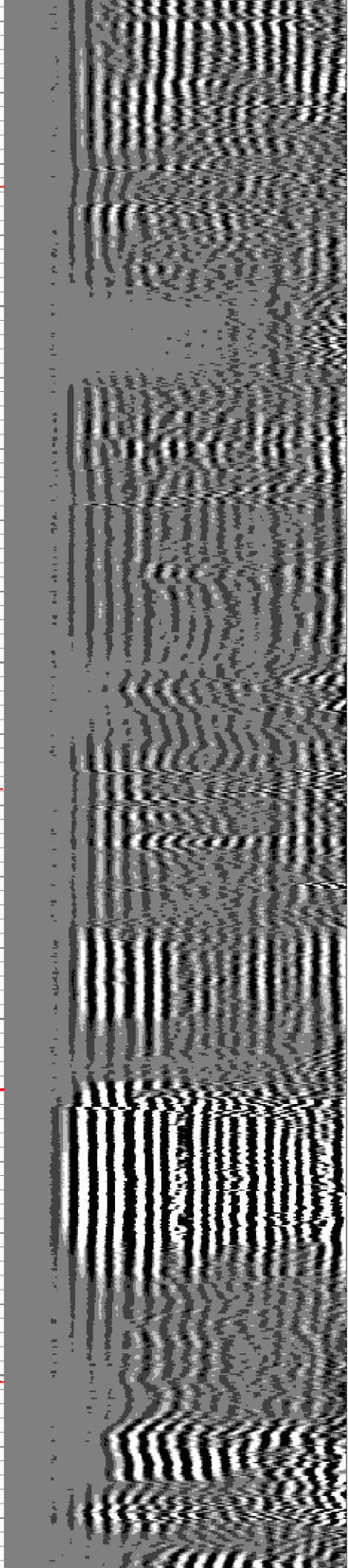
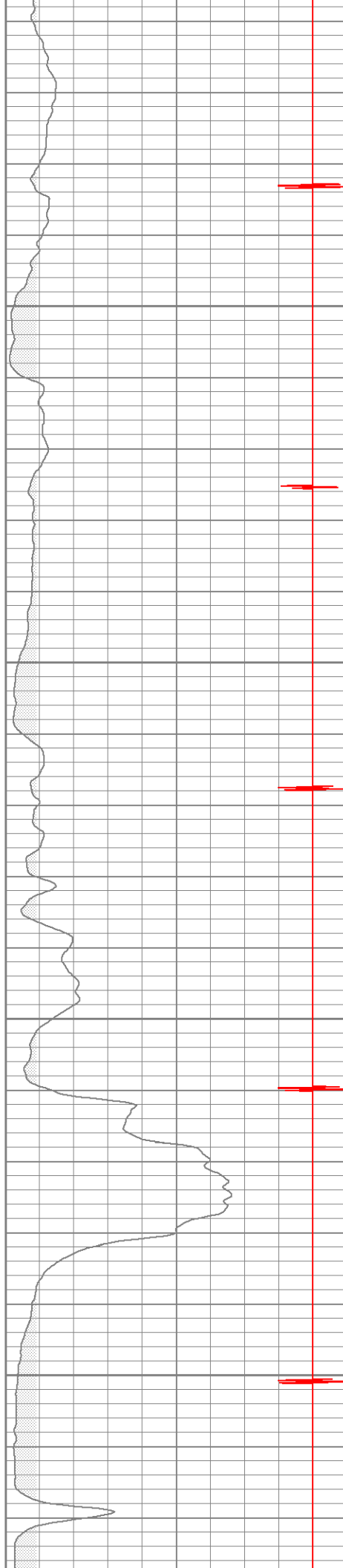


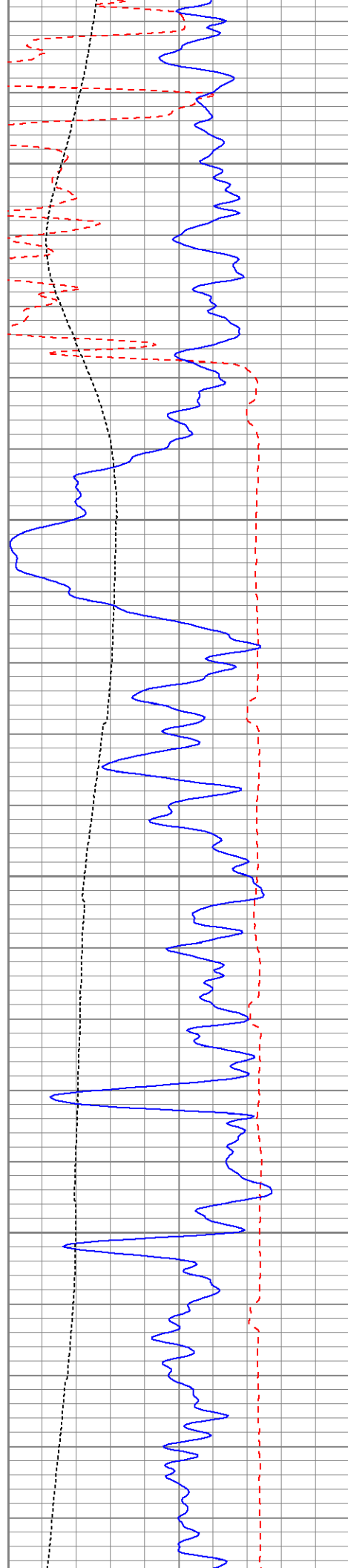
350

400

450

500



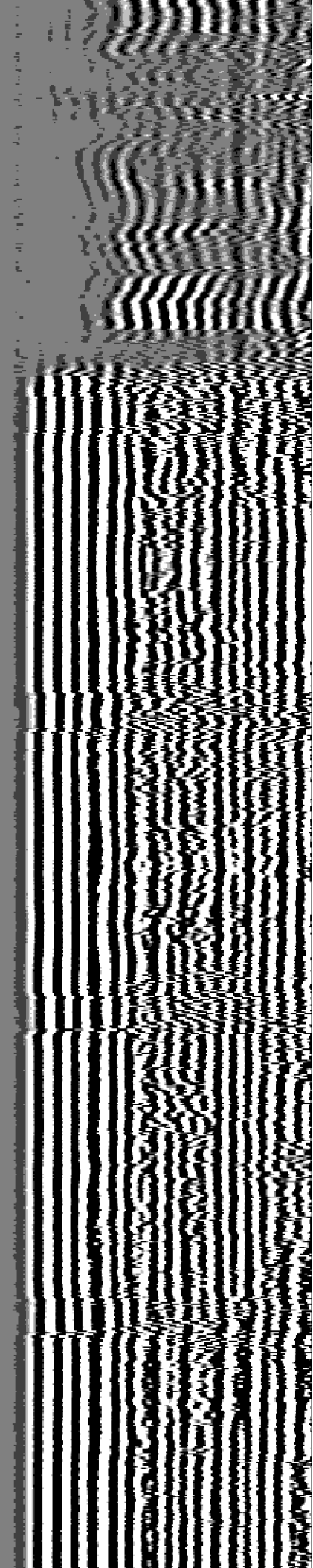
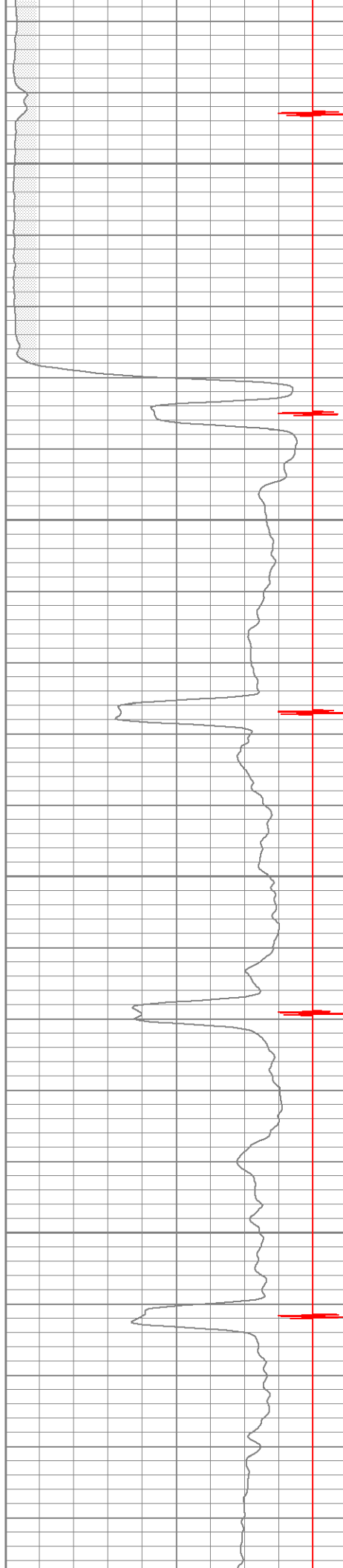


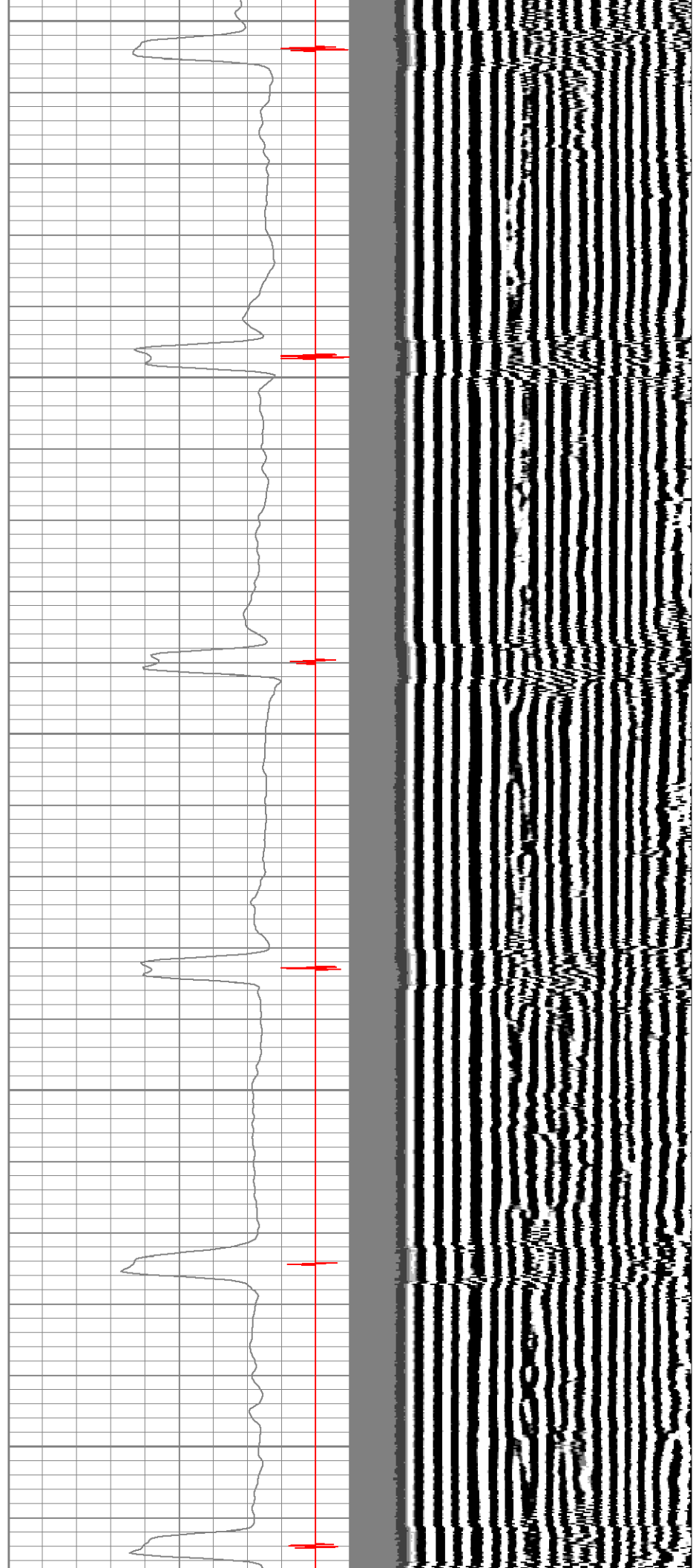
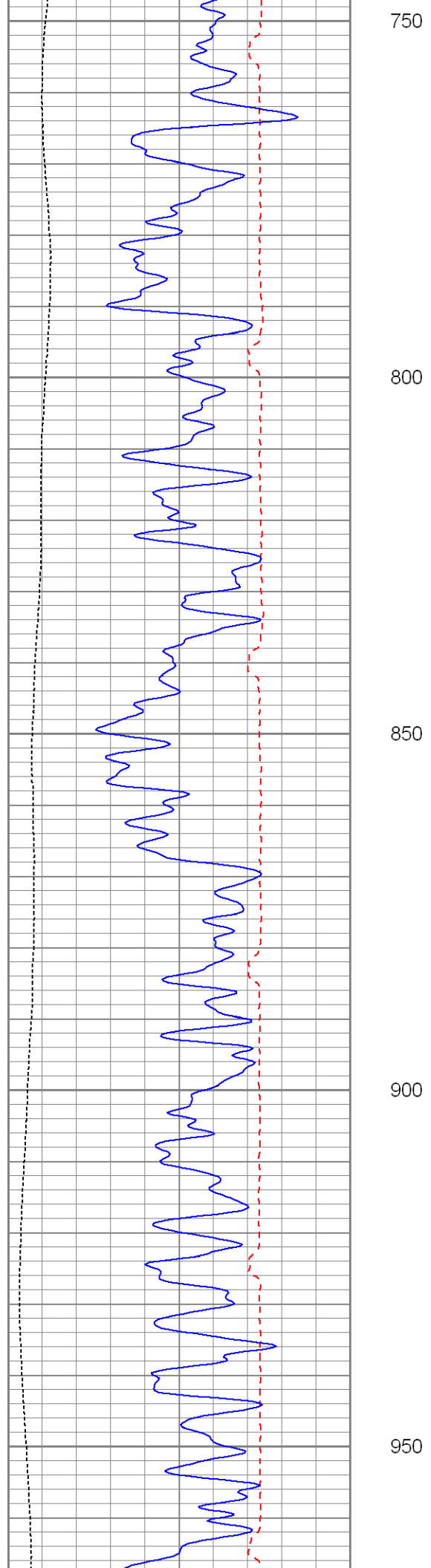
550

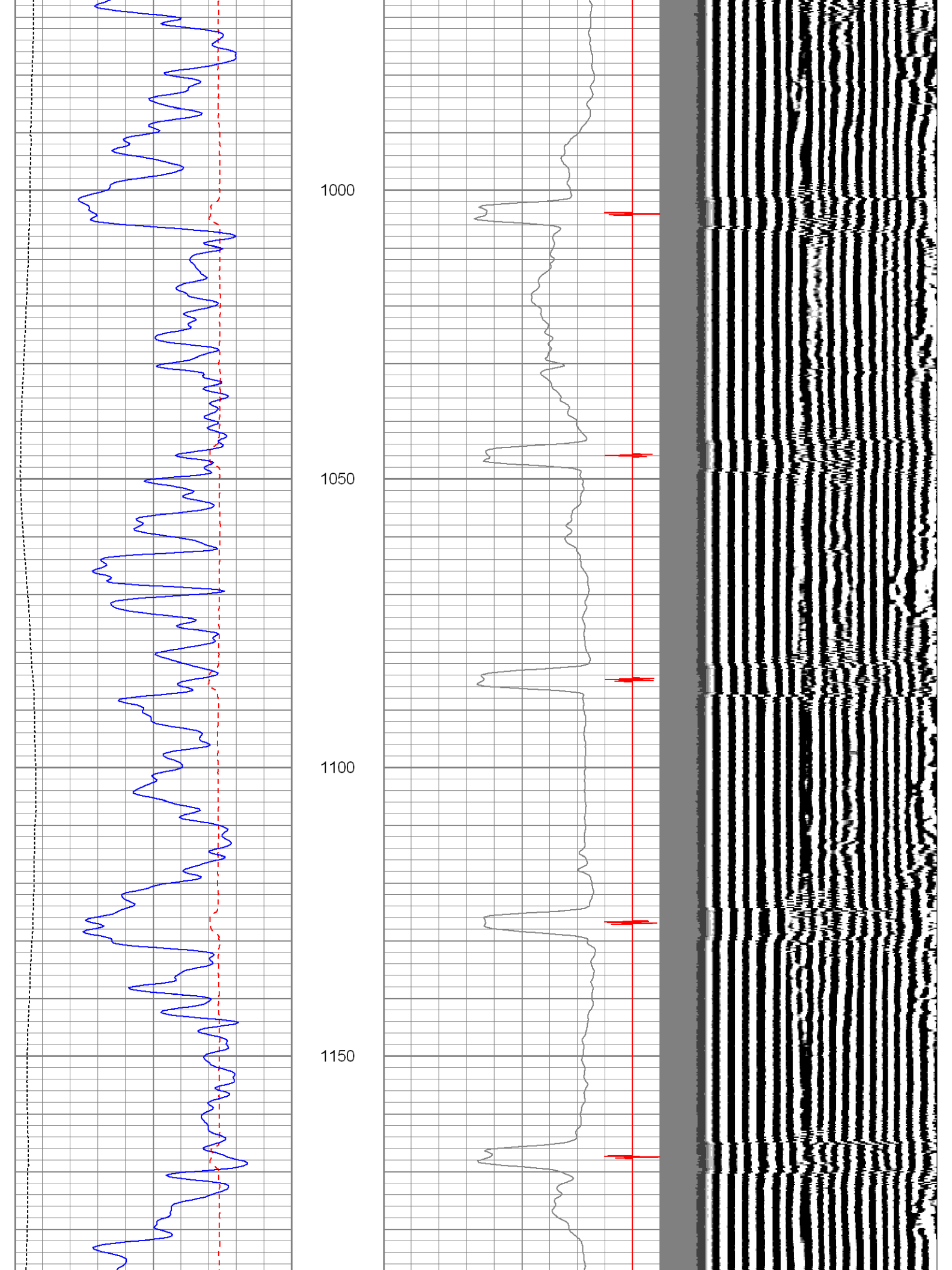
600

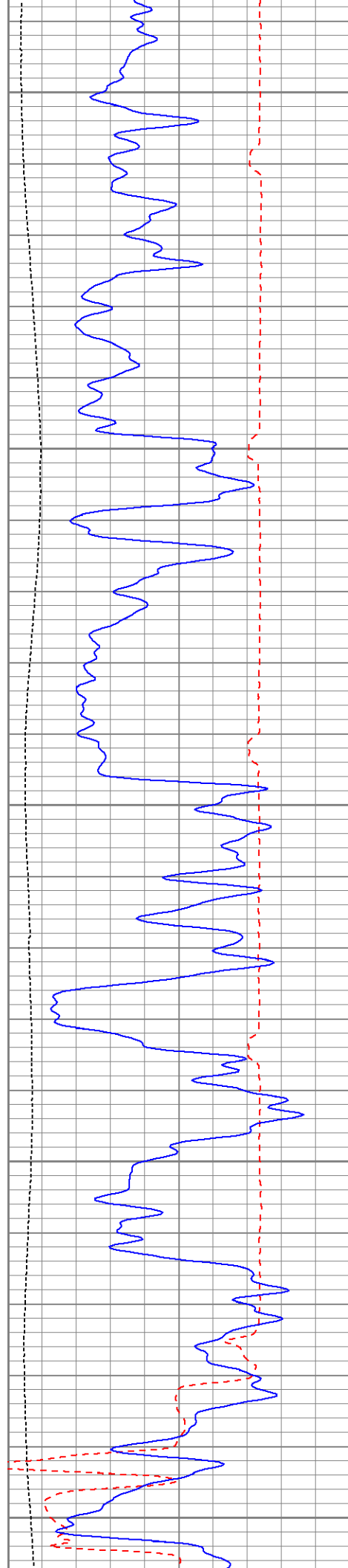
650

700









1200

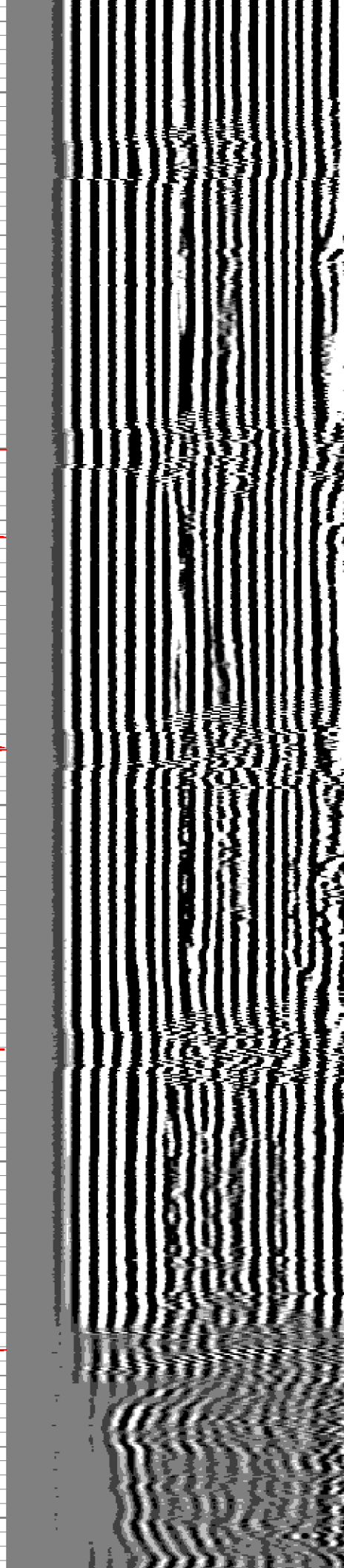
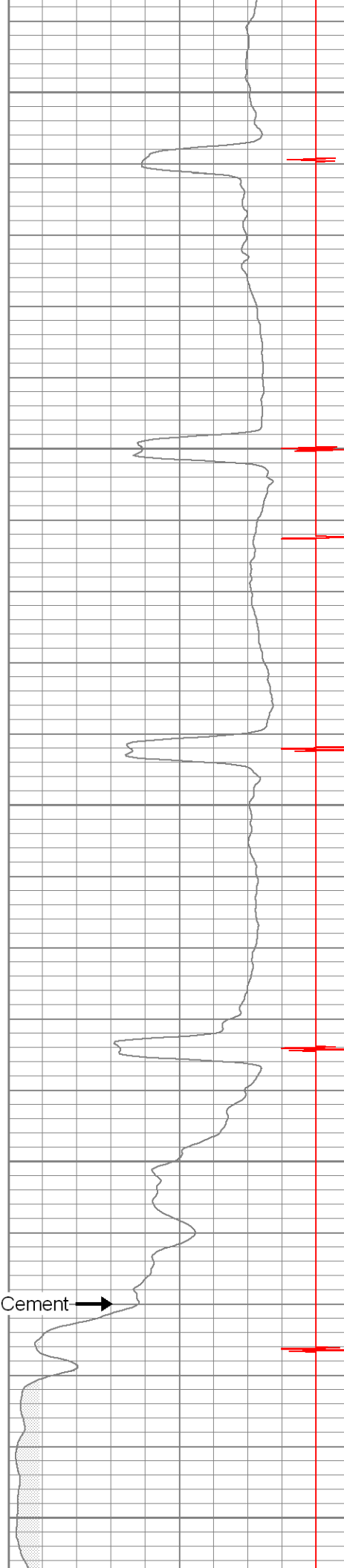
1250

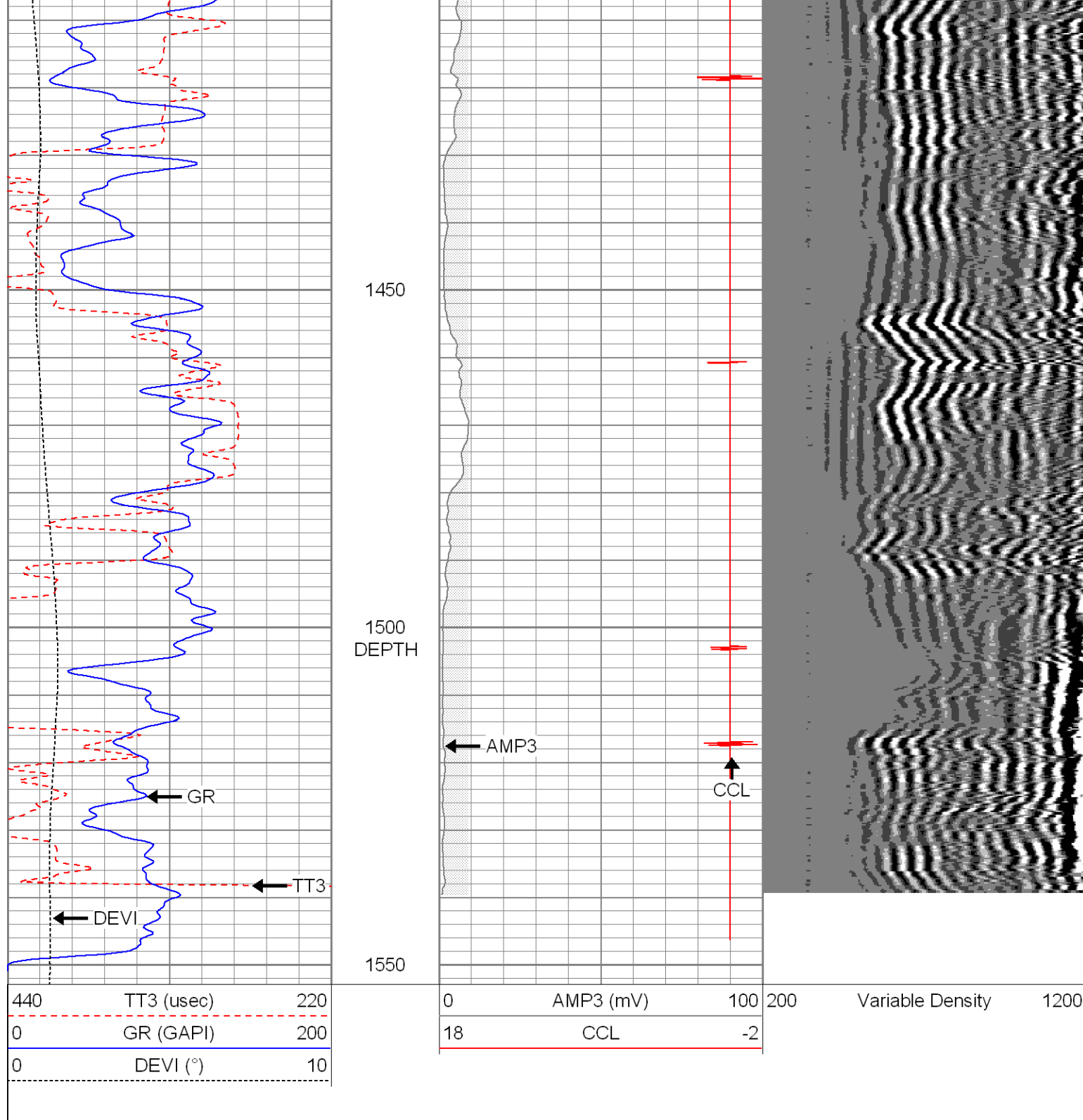
1300

1350

1400

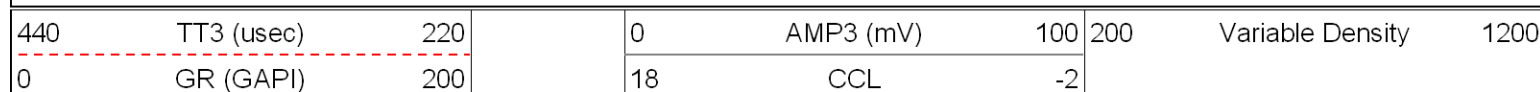
Top of Cement →

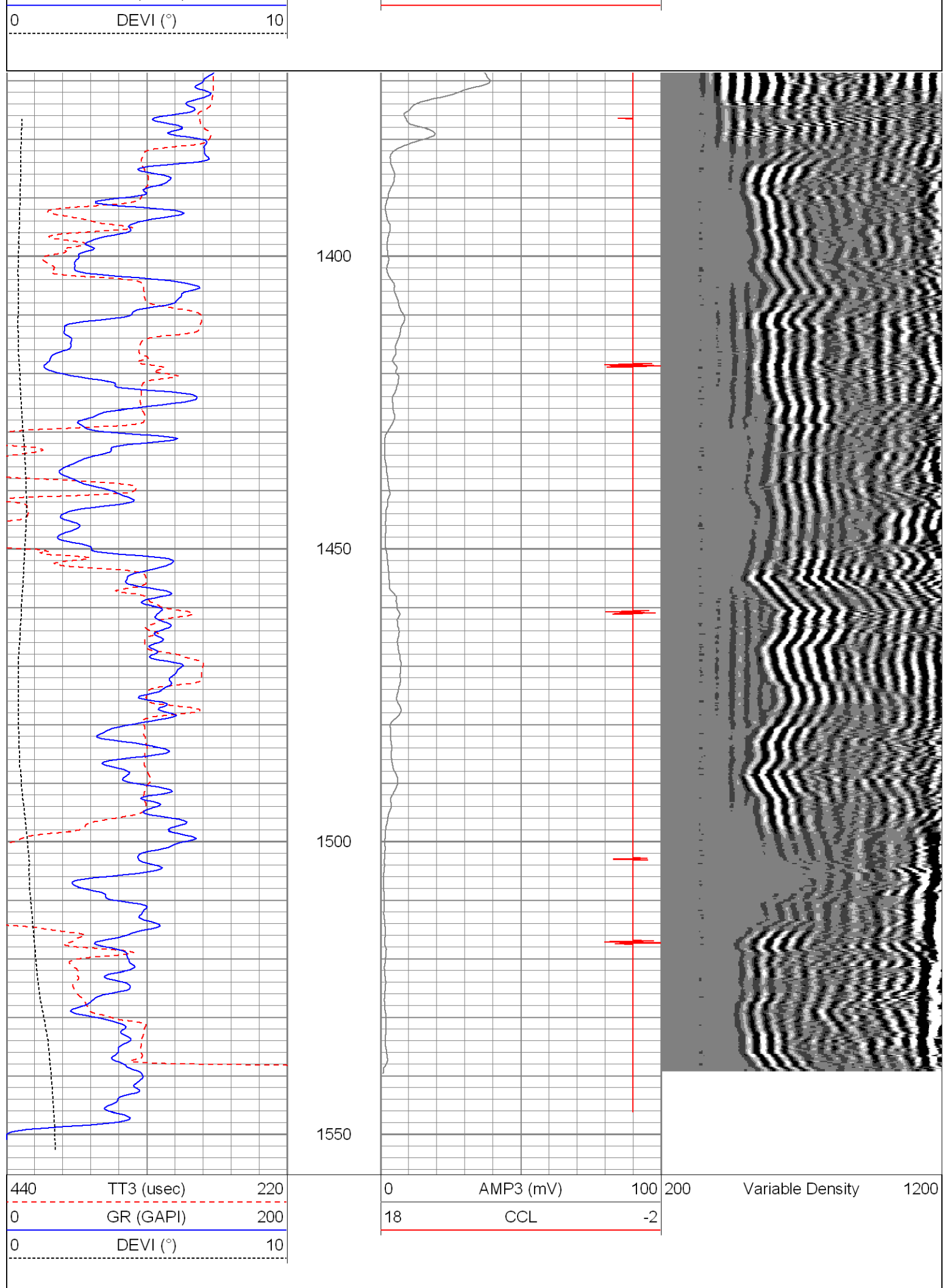




Repeat Pass

Database File: vallejo 32-19cb102411.db
 Dataset Pathname: pass4
 Presentation Format: cbldig
 Dataset Creation: Mon Oct 24 08:19:34 2011 by Log SCH 110722
 Charted by: Depth in Feet scaled 1:240





Calibration Report

Database File: vallejo 32-19cbl102411.db
 Dataset Pathname: pass5
 Dataset Creation: Mon Oct 24 08:29:45 2011 by Log SCH 110722

Gamma Ray Calibration Report

Serial Number: 081014
 Tool Model: 275D_INC
 Performed: Thu Sep 02 12:34:39 2010

Calibrator Value: 1.0 GAPI

Background Reading: 0.0 cps
 Calibrator Reading: 1.0 cps

Sensitivity: 1.0000 GAPI/cps

Inclinometer Calibration Report

Performed: Thu Sep 02 12:35:05 2010

	Low Read.	High Read.	Low Ref.	High Ref.	
X Accelerometer	-3589.40	3580.00	-1.00	1.00	gee
Y Accelerometer	-3673.00	3502.20	-1.00	1.00	gee
Z Accelerometer					

Cement Bond Log Calibration Report

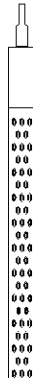
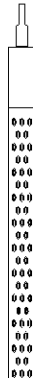
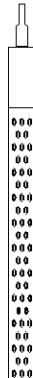
Serial Number: 080201
 Tool Model: DigitalCBL
 Performed: Tue Oct 11 12:12:54 2011

Depth: 729.191 ft
 Casing Diameter: 5.5 in

3' Spacing 5' Spacing

Signal Zero: 1 0 mV
 Calibrated Amplitude: 71.921 71.921 mV
 Reading at Signal Zero: -0.0012207 -0.00124512 V
 Reading in Free Pipe: 2.01 -0.975732 V

Gain: 35.2627 -73.8039
 Offset: 1.04305 -0.0918946

Sensor	Offset (ft)	Schematic	Description	Len (ft)	OD (in)	Wt (lb)
			sdschd	0.75	1.44	3.00
WVF3	14.63		Probedig-DigitalCBL (080201)	8.77	2.75	92.00
WVF5	13.63		2 3/4 Bond Tool			

