

Company		Vallejo 32-19		Company		Pioneer Natural Resources	
Well		Vallejo 32-19		Well		Vallejo 32-19	
Field		Purgatorie River		Field		Purgatorie River	
County		Las Animas		County		Las Animas	
State		co		State		co	
Location:				API # : 05 071 09338 00			
SEC 19 TWP 33S RGE 67W				1637FNL & 1450' FEL			
Permanent Datum				Ground level		Elevation	
Log Measured From				Kelly bushing 4AGL		K.B. 7345	
Drilling Measured From				Kelly bushing		D.F. 7341	
Date				10-27-11			
Run Number		Four		Run Number		Four	
Depth Driller		1965		Depth Driller		1965	
Depth Logger		1279		Depth Logger		1279	
Bottom Logged Interval		1274		Bottom Logged Interval		1274	
Top Log Interval		130 FT		Top Log Interval		130 FT	
Open Hole Size		7 7/8		Open Hole Size		7 7/8	
Type Fluid		water		Type Fluid		water	
Density / Viscosity		///		Density / Viscosity		///	
Max. Recorded Temp.		///		Max. Recorded Temp.		///	
Estimated Cement Top		///		Estimated Cement Top		///	
Time Well Ready		ROA		Time Well Ready		ROA	
Time Logger on Bottom		9:30a.m.		Time Logger on Bottom		9:30a.m.	
Equipment Number		T601		Equipment Number		T601	
Location		Trinidad		Location		Trinidad	
Recorded By		J Buhr		Recorded By		J Buhr	
Witnessed By		Scott Nelson		Witnessed By		Scott Nelson	
Borehole Record				Tubing Record			
Run Number	Bit	From	To	Size	Weight	From	To
Casing Record	Size	Wgt/Ft	Top	Bottom			
Surface String	8 5/8		0	336			
Prot. String							
Production String	5 1/2	15	0	1925			
Liner							

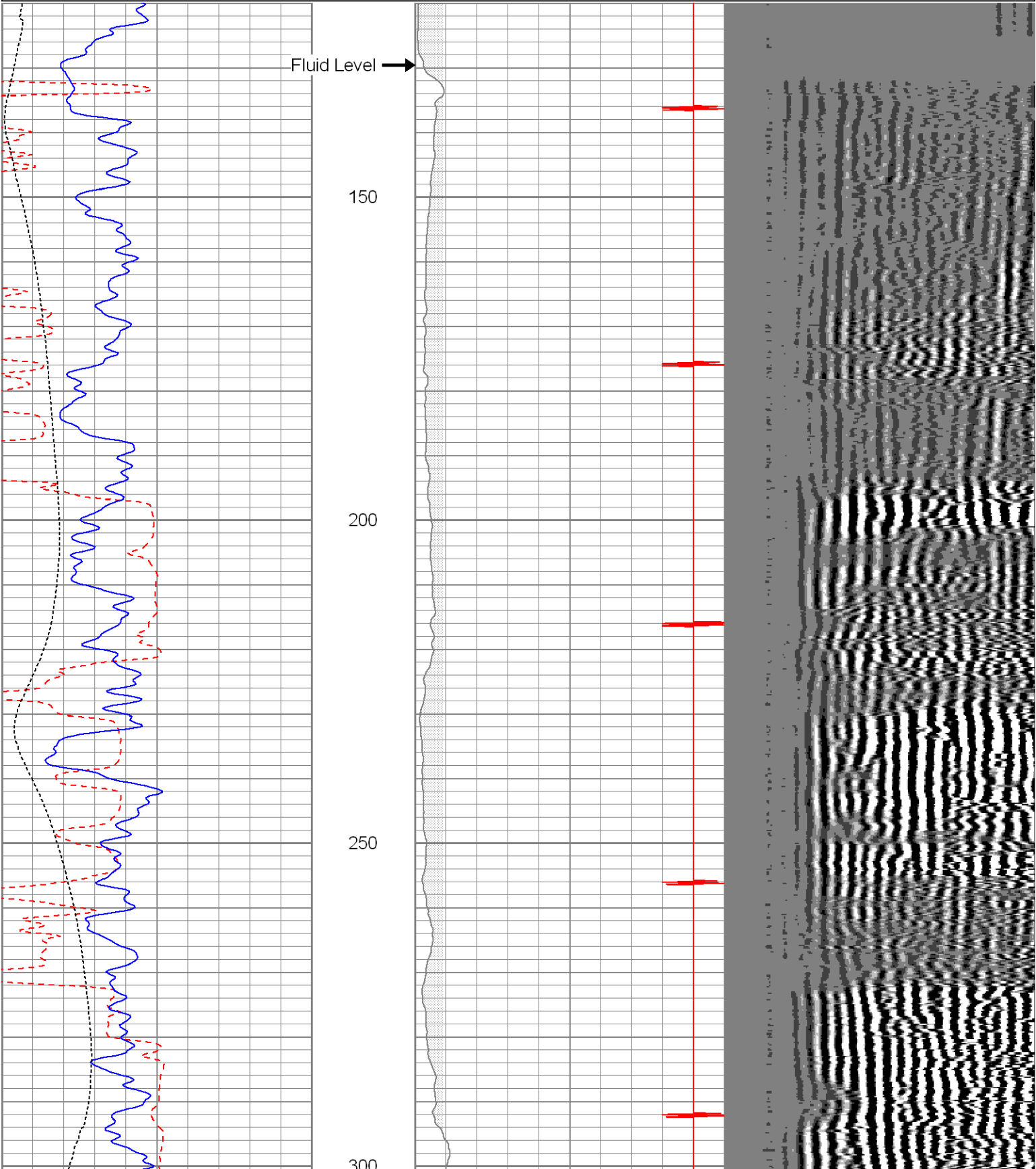
<<< Fold Here >>>

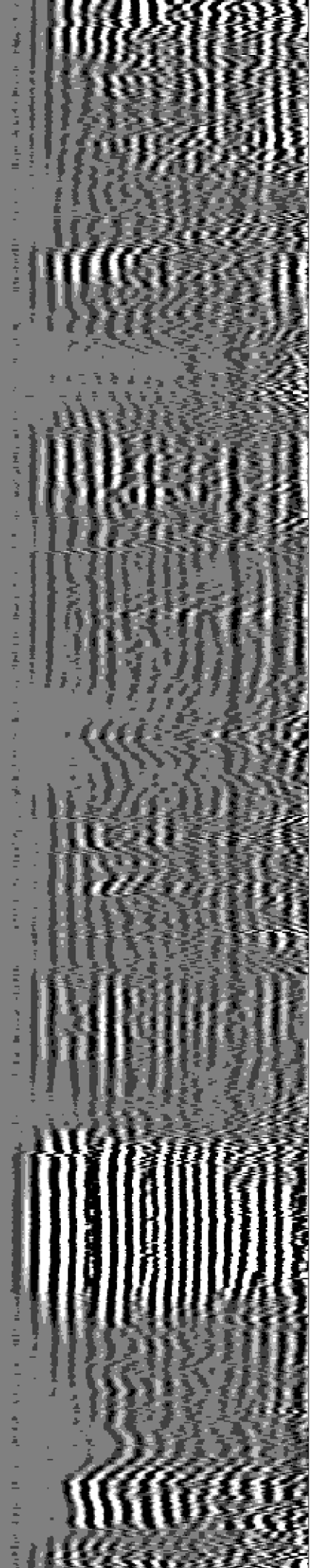
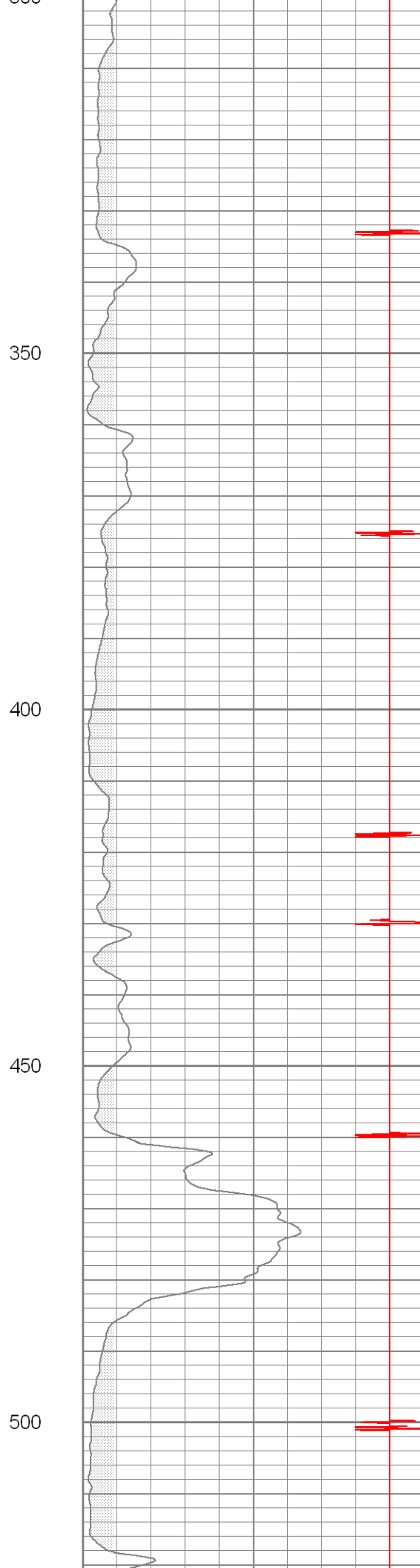
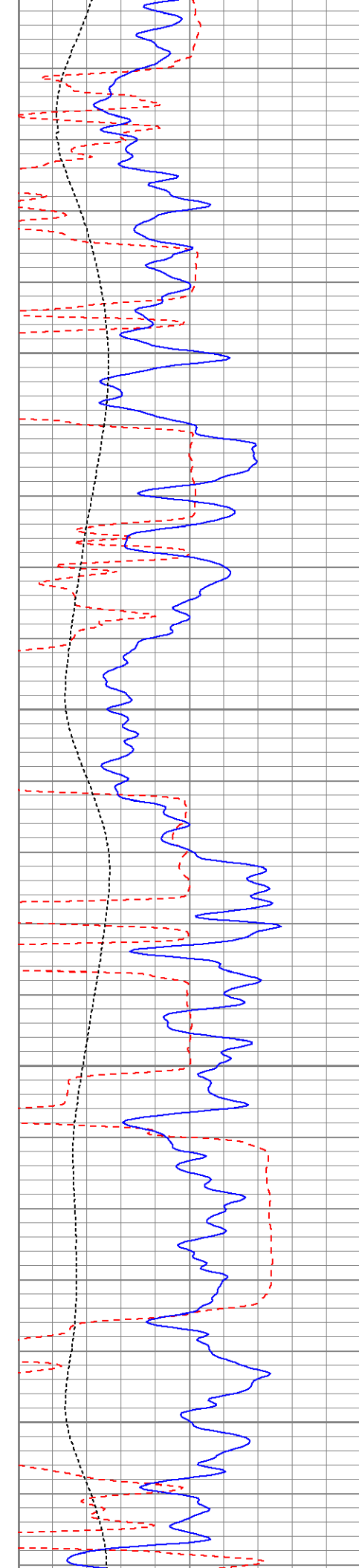
All interpretations are opinions based on inferences from electrical or other measurements and we cannot and do not guarantee the accuracy or correctness of any interpretation, and we shall not, except in the case of gross or willful negligence on our part, be liable or responsible for any loss, costs, damages, or expenses incurred or sustained by anyone resulting from any interpretation made by any of our officers, agents or employees. These interpretations are also subject to our general terms and conditions set out in our current Price Schedule.

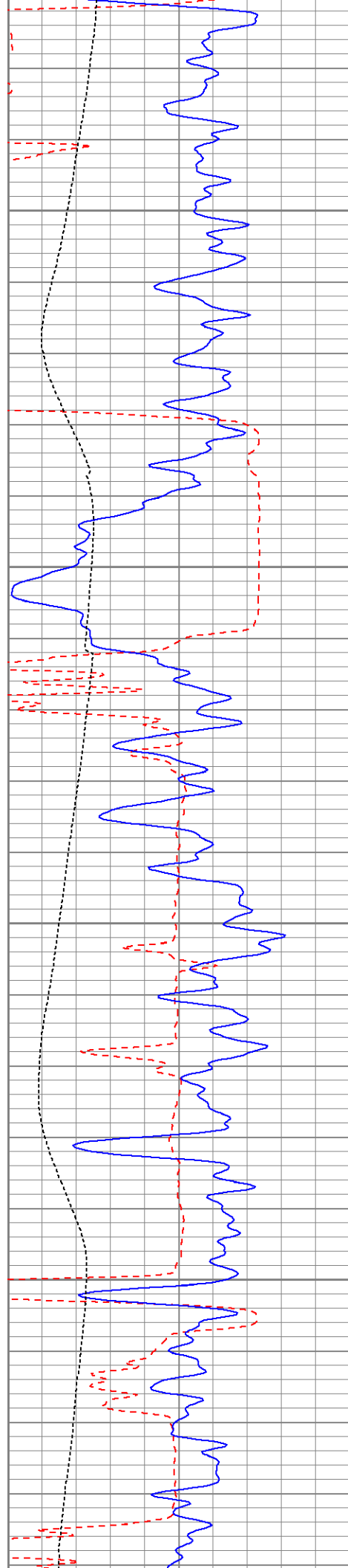
Comments

Database File: vallejo102711b.db
Dataset Pathname: pass2
Presentation Format: cbldig
Dataset Creation: Thu Oct 27 10:14:23 2011 by Log SCH 110722
Charted by: Depth in Feet scaled 1:240

440	TT3 (usec)	220	0	AMP3 (mV)	100	200	Variable Density	1200
0	GR (GAPI)	200	18	CCL	-2			
0	DEVI (°)	10						





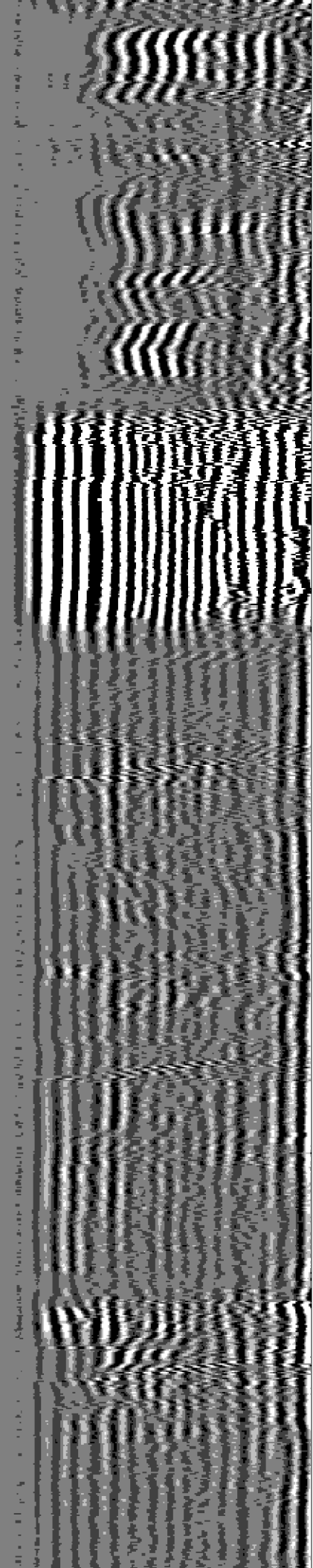
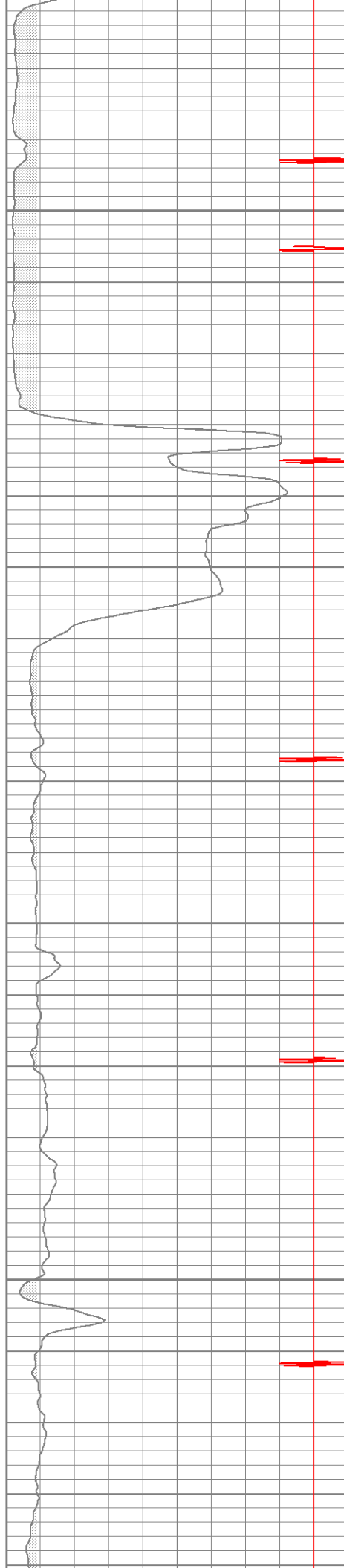


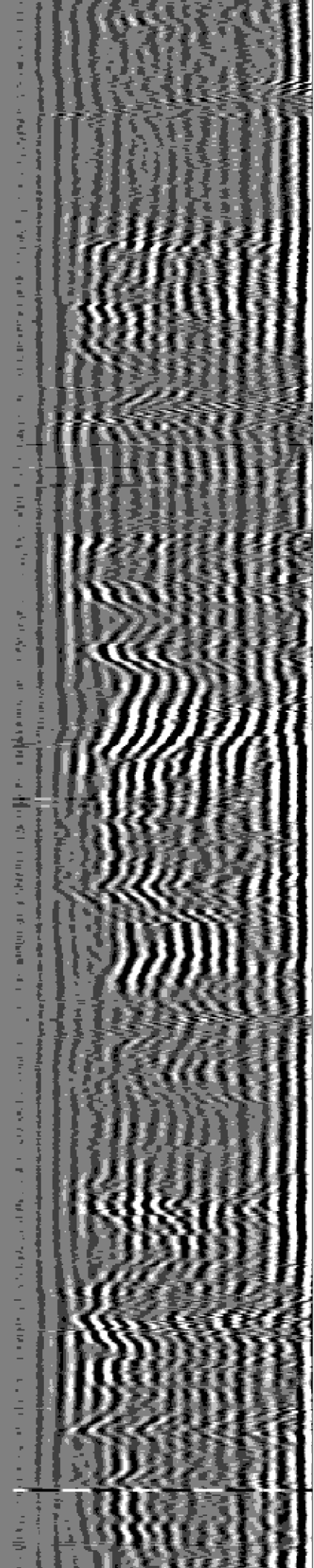
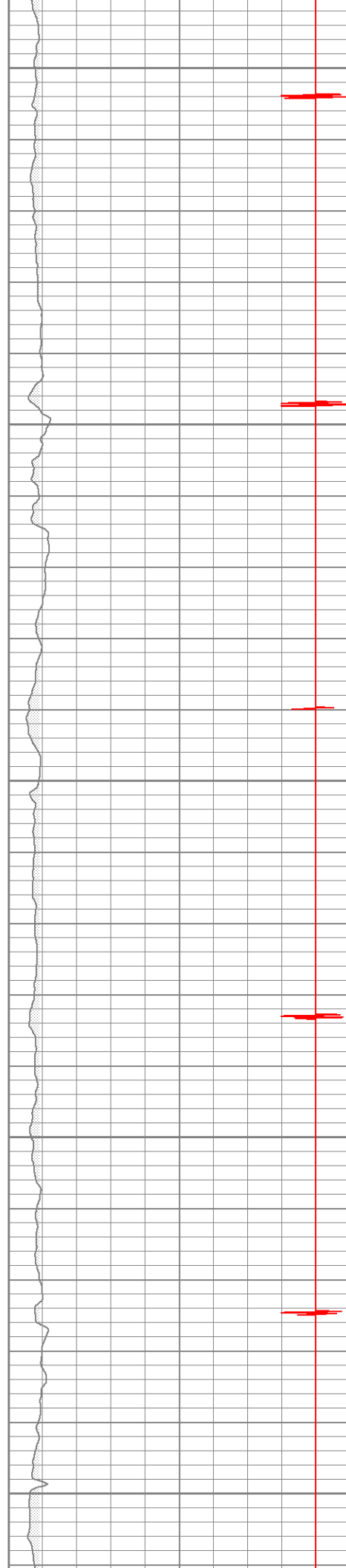
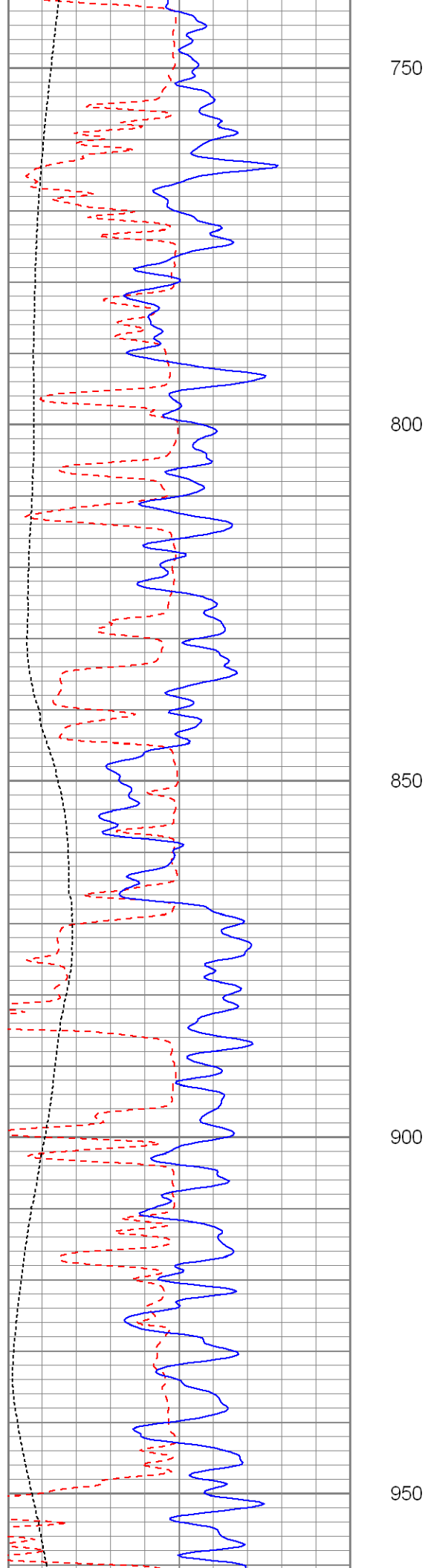
550

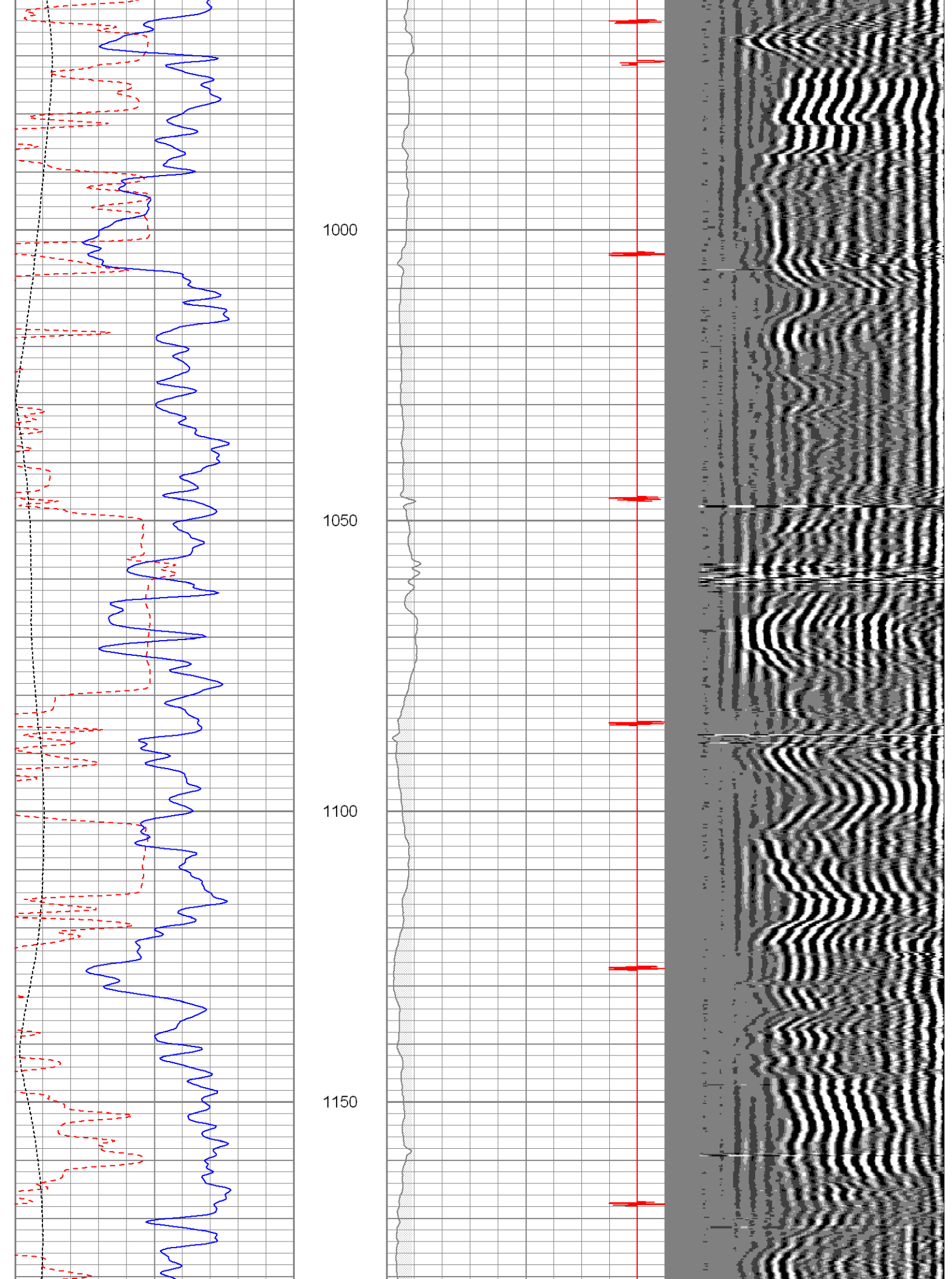
600

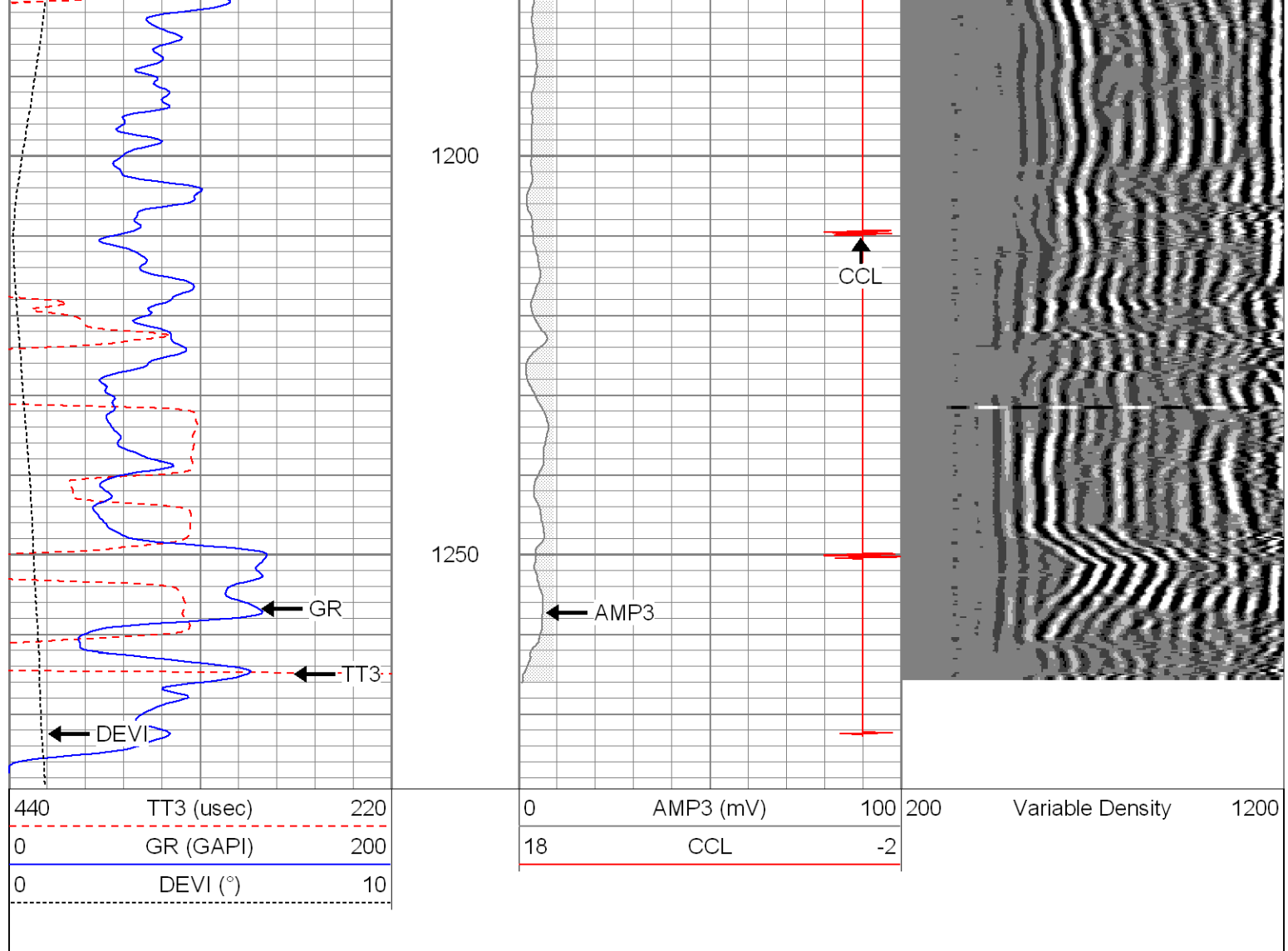
650

700



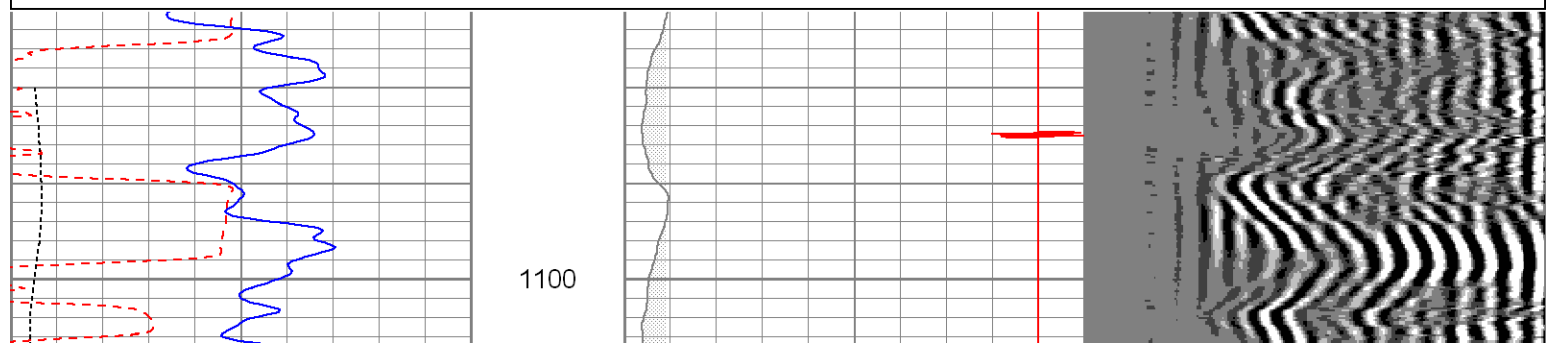
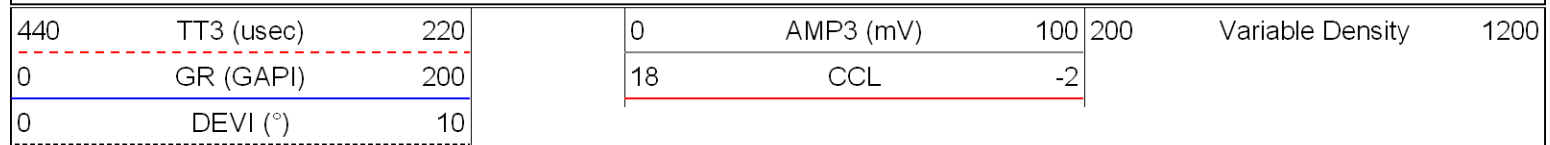


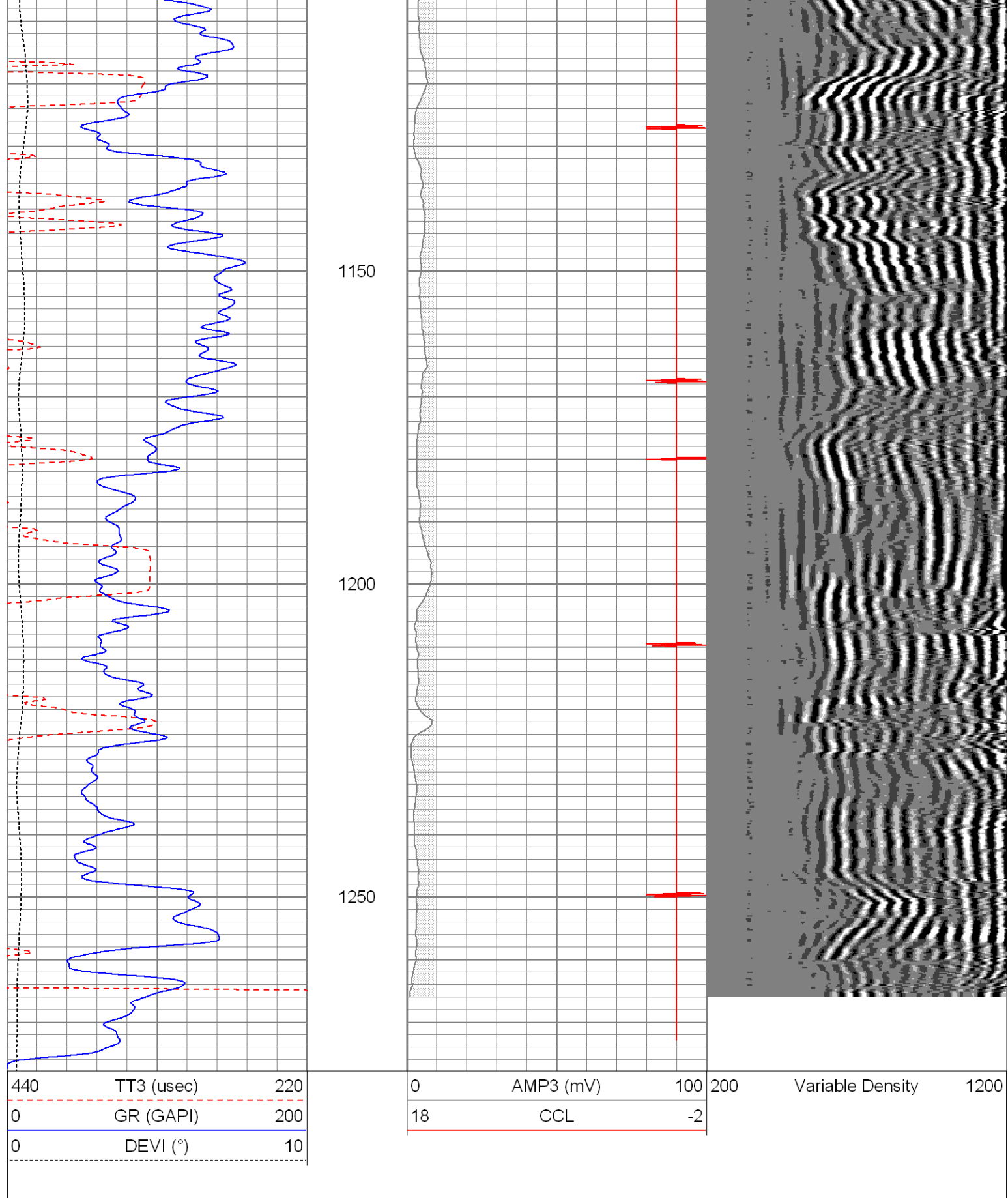




Repeat Pass

Database File: vallejo102711b.db
 Dataset Pathname: pass1
 Presentation Format: cbldig
 Dataset Creation: Thu Oct 27 10:07:57 2011 by Log SCH 110722
 Charted by: Depth in Feet scaled 1:240





Calibration Report

Database File: vallejo102711b.db
Dataset Pathname: pass2
Dataset Creation: Thu Oct 27 10:14:23 2011 by Log SCH 110722

Gamma Ray Calibration Report

Serial Number: 081014
Tool Model: 275D_INC
Performed: Thu Sep 02 12:34:39 2010

Calibrator Value: 1.0 GAPI

Background Reading: 0.0 cps
Calibrator Reading: 1.0 cps

Sensitivity: 1.0000 GAPI/cps

Inclinometer Calibration Report

Performed: Thu Sep 02 12:35:05 2010

	Low Read.	High Read.	Low Ref.	High Ref.	
X Accelerometer	-3589.40	3580.00	-1.00	1.00	gee
Y Accelerometer	-3673.00	3502.20	-1.00	1.00	gee
Z Accelerometer					

Cement Bond Log Calibration Report

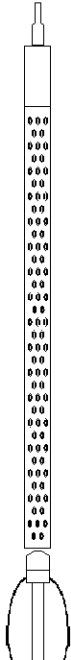
Serial Number: 080201
Tool Model: DigitalCBL
Performed: Thu Oct 27 10:05:24 2011

Depth: 729.191 ft
Casing Diameter: 5.5 in

3' Spacing 5' Spacing

Signal Zero:	1	0	mV
Calibrated Amplitude:	71.921	71.921	mV
Reading at Signal Zero:	-0.0012207	-0.00124512	V
Reading in Free Pipe:	2	-0.975732	V

Gain:	35.4389	-73.8039
Offset:	1.04326	-0.0918946

Sensor	Offset (ft)	Schematic	Description	Len (ft)	OD (in)	Wt (lb)
			sdschd	0.75	1.44	3.00
WVF3	14.63		Probedig-DigitalCBL (080201)	8.77	2.75	92.00
WVF5	13.63		2 3/4 Bond Tool			
			275 2 3/4" Centralizer	2.94	2.75	10.00

