

Company		Vallejo 32-19		Company		Pioneer Natural Resources	
Well		Vallejo 32-19		Well		Vallejo 32-19	
Field		Purgatorie River		Field		Purgatorie River	
County		Las Animas		County		Las Animas	
State		CO		State		CO	
Location:				API # : 05 071 09338 00			
SEC 19 TWP 33S RGE 67W				1637FNL & 1450' FEL			
Permanent Datum		Ground level		Elevation		Other Services	
Log Measured From		Kelly bushing 4AGL		K.B. 7345		DEVI	
Drilling Measured From		Kelly bushing		D.F. 7341			
Date		10-19-11					
Run Number		one					
Depth Driller		1965					
Depth Logger		1925					
Bottom Logged Interval		1920					
Top Log Interval		Surface					
Open Hole Size		7 7/8					
Type Fluid		water					
Density / Viscosity		///					
Max. Recorded Temp.		///					
Estimated Cement Top		///					
Time Well Ready		13:30					
Time Logger on Bottom		13:45					
Equipment Number		T601					
Location		Trinidad					
Recorded By		T. Patterson					
Witnessed By		Curtis Adam					
Borehole Record				Tubing Record			
Run Number	Bit	From	To	Size	Weight	From	To
Casing Record		Size		Wgt/Ft		Top	Bottom
Surface String		8 5/8				0	336
Prot. String							
Production String		5 1/2				0	1925
Liner							

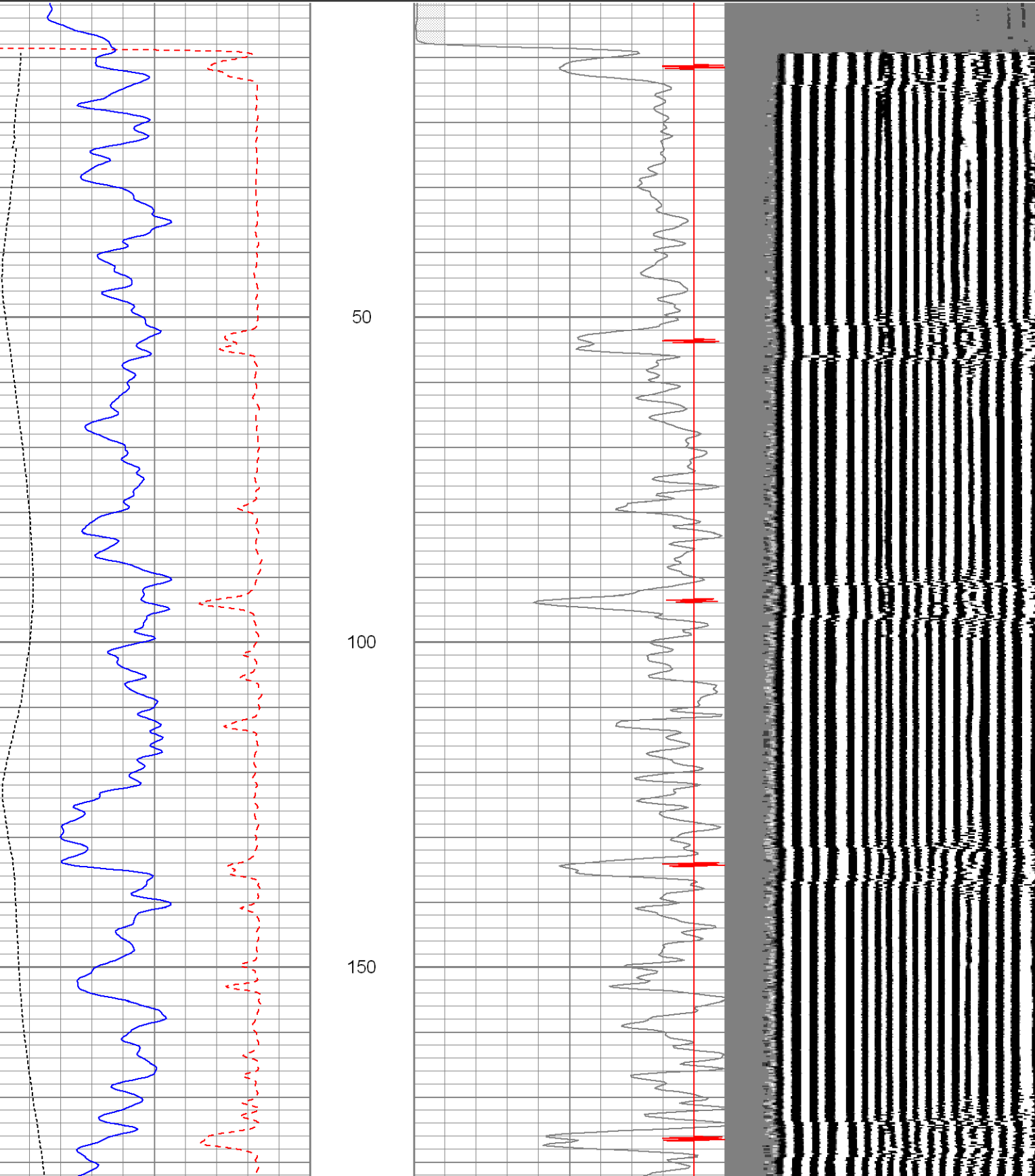
<<< Fold Here >>>

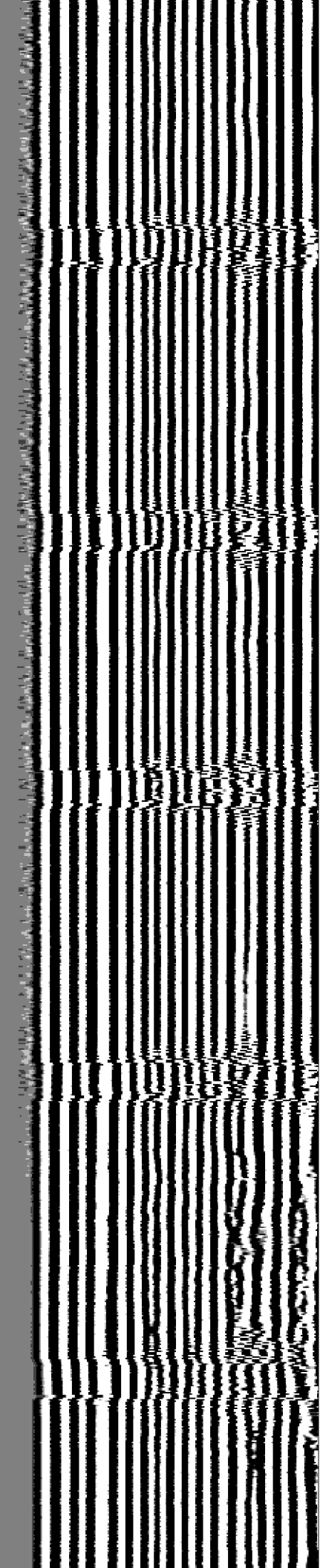
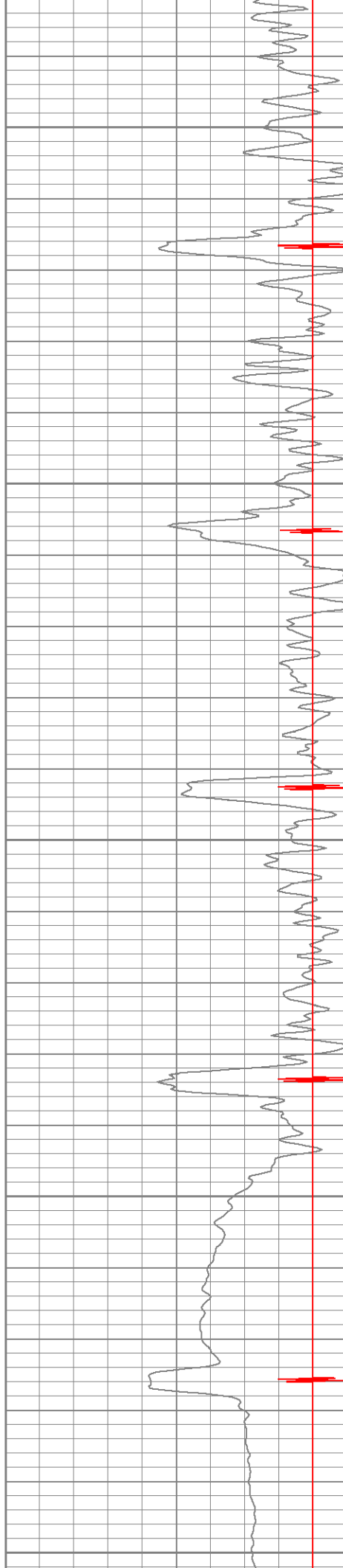
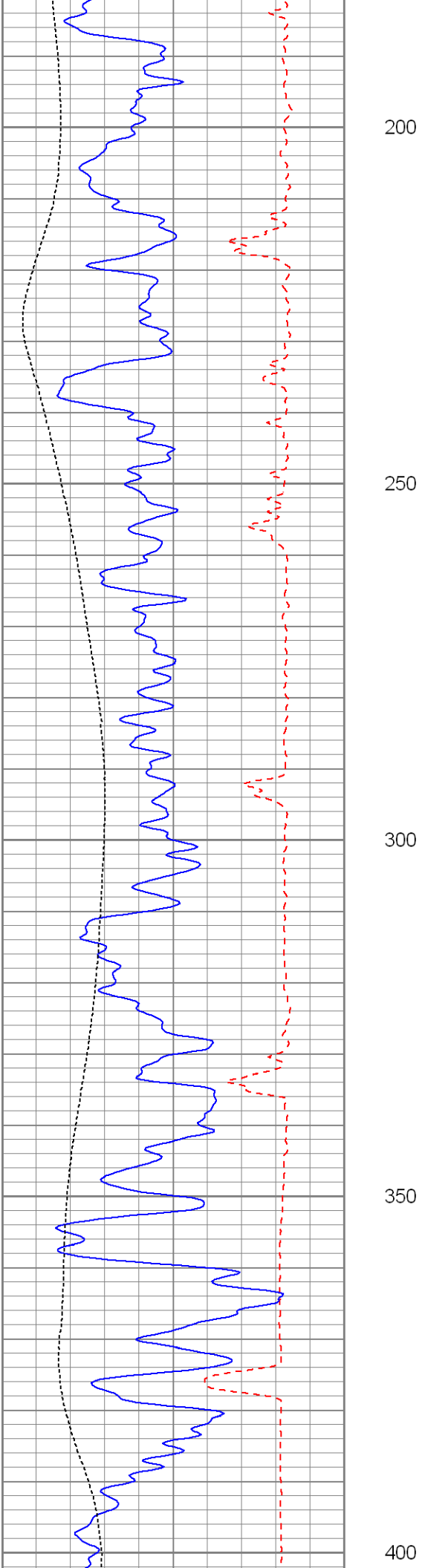
All interpretations are opinions based on inferences from electrical or other measurements and we cannot and do not guarantee the accuracy or correctness of any interpretation, and we shall not, except in the case of gross or willful negligence on our part, be liable or responsible for any loss, costs, damages, or expenses incurred or sustained by anyone resulting from any interpretation made by any of our officers, agents or employees. These interpretations are also subject to our general terms and conditions set out in our current Price Schedule.

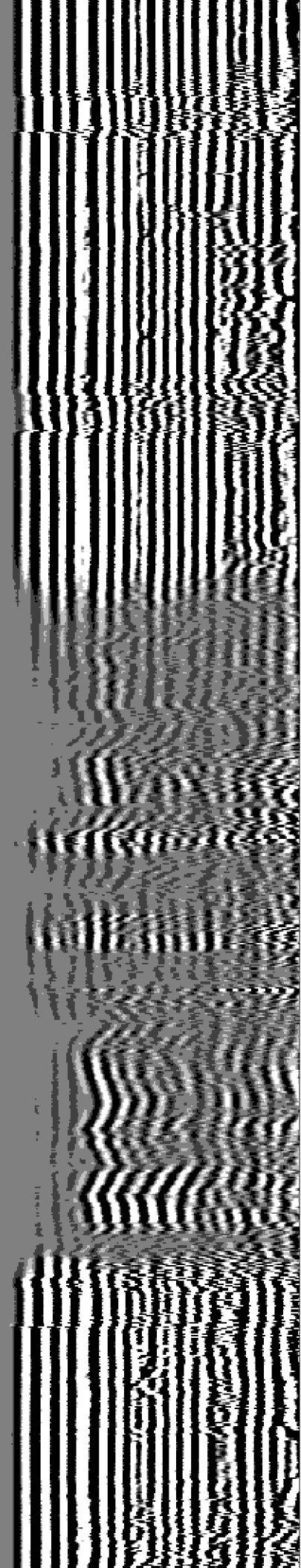
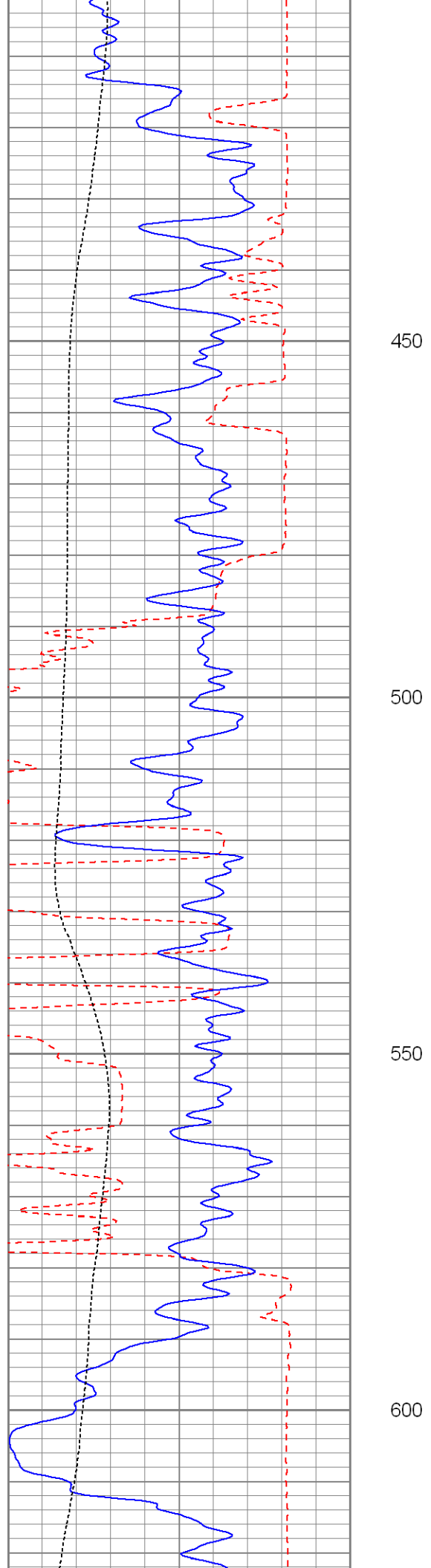
Comments

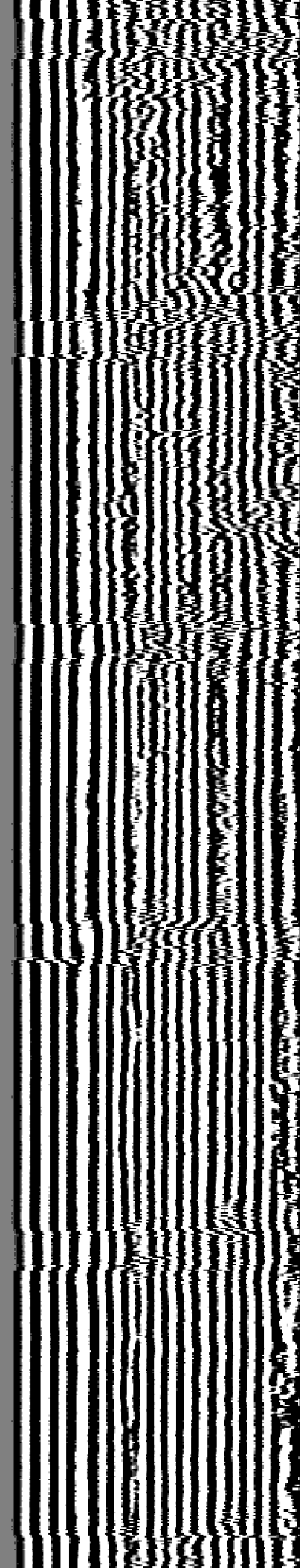
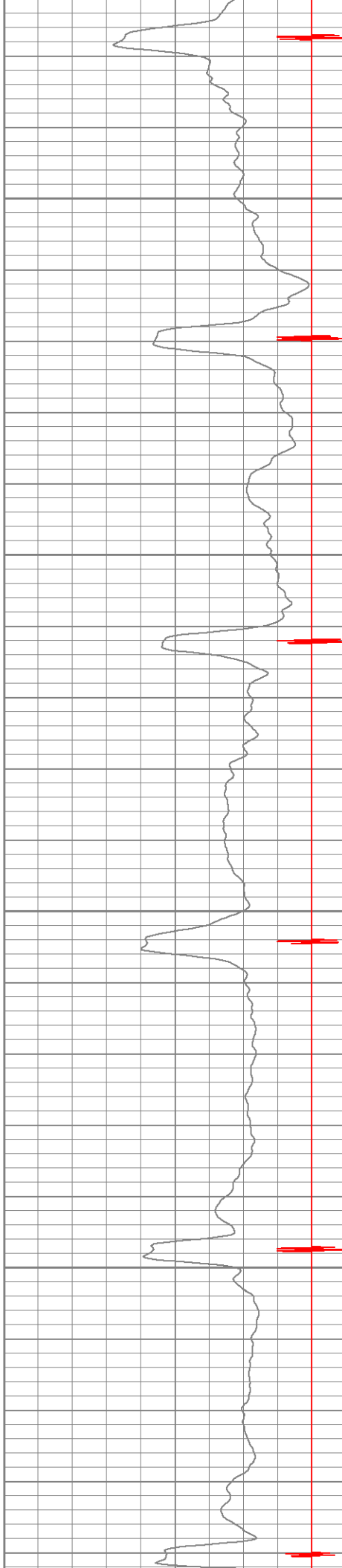
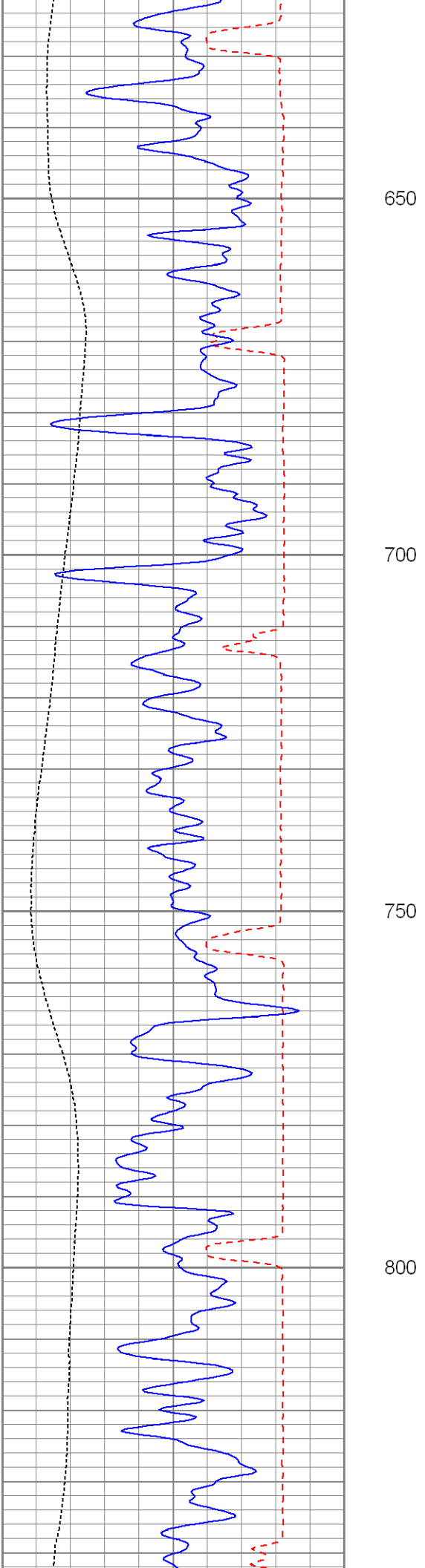
Database File: vallejo 32-19cbl.db  
Dataset Pathname: pass2.3  
Presentation Format: cblidig  
Dataset Creation: Wed Oct 19 19:06:16 2011 by Calc SCH 110722  
Charted by: Depth in Feet scaled 1:240

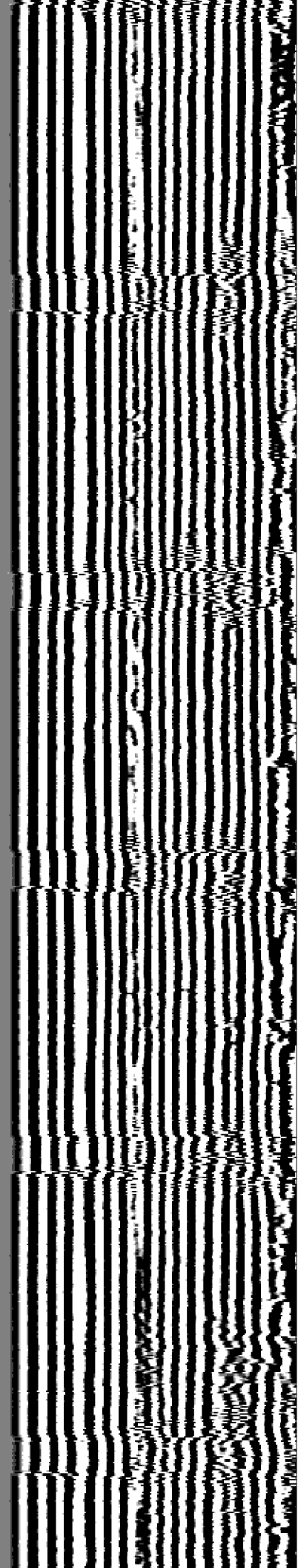
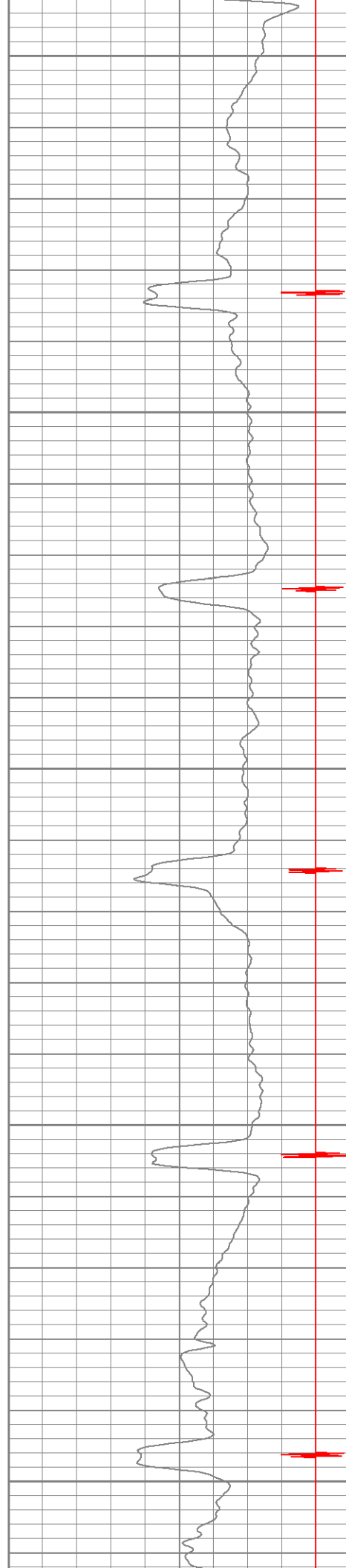
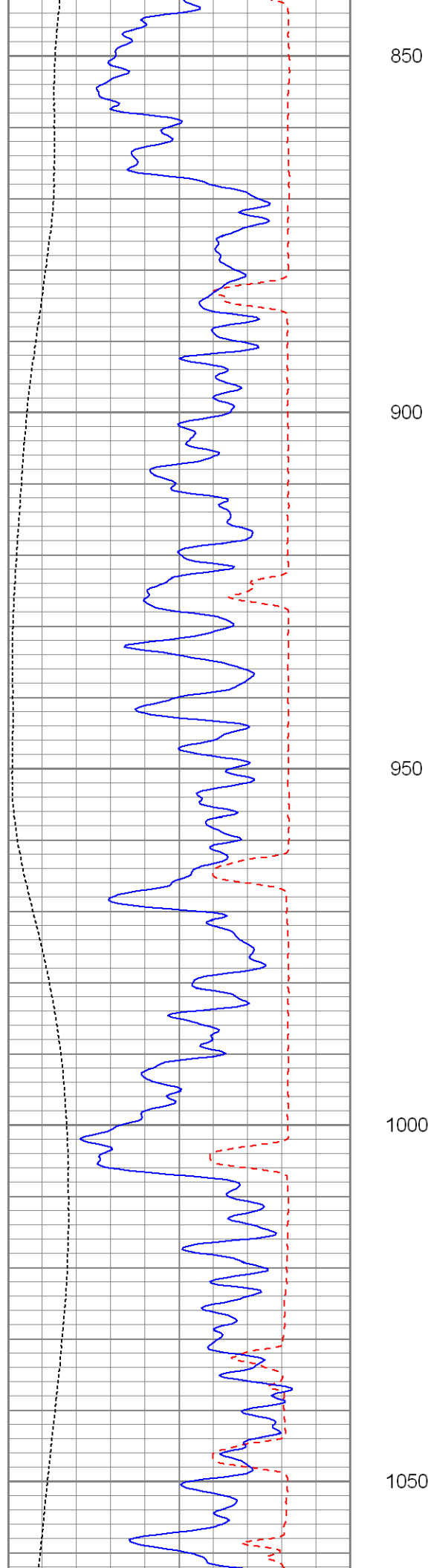
440	TT3 (usec)	220	0	AMP3 (mV)	100	200	Variable Density	1200
0	GR (GAPI)	200	18	CCL	-2			
0	DEVI (°)	10						



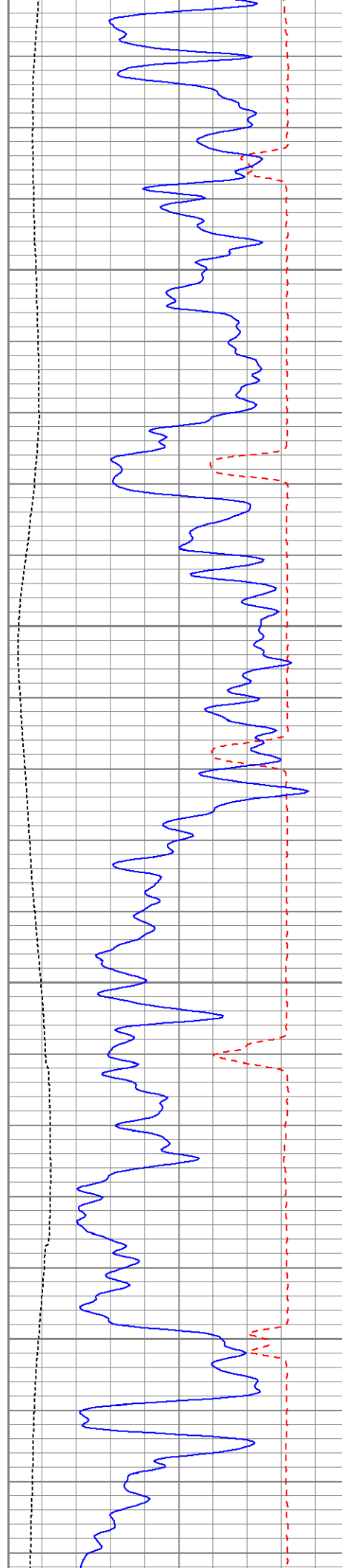










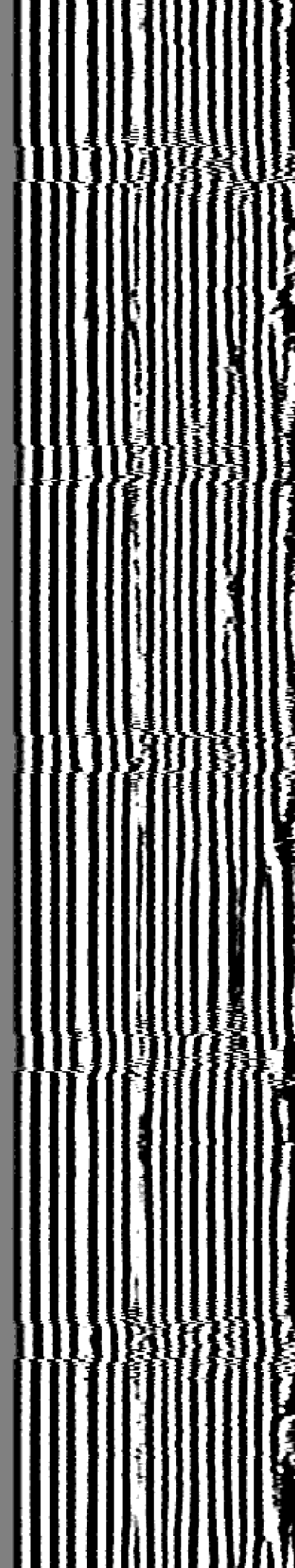
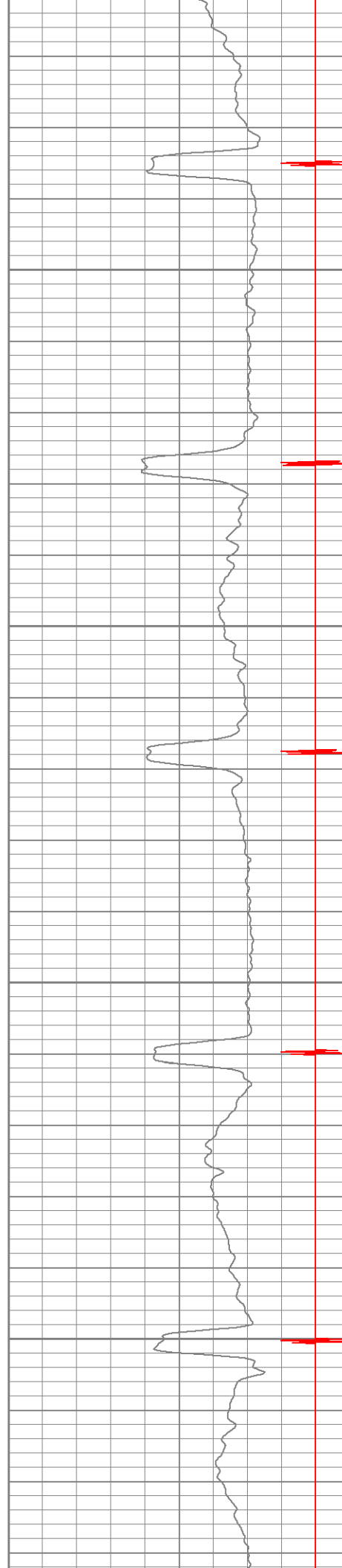


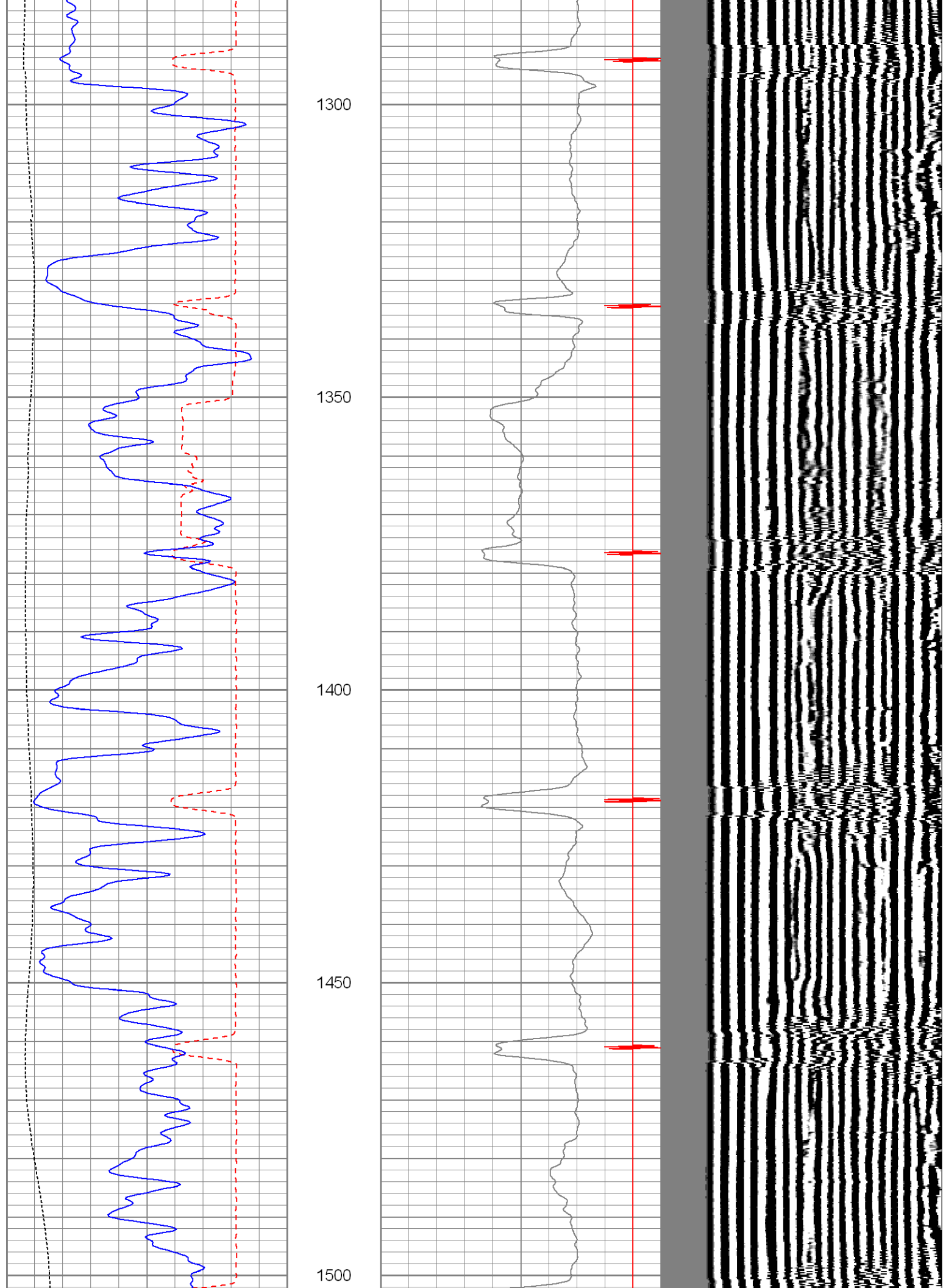
1100

1150

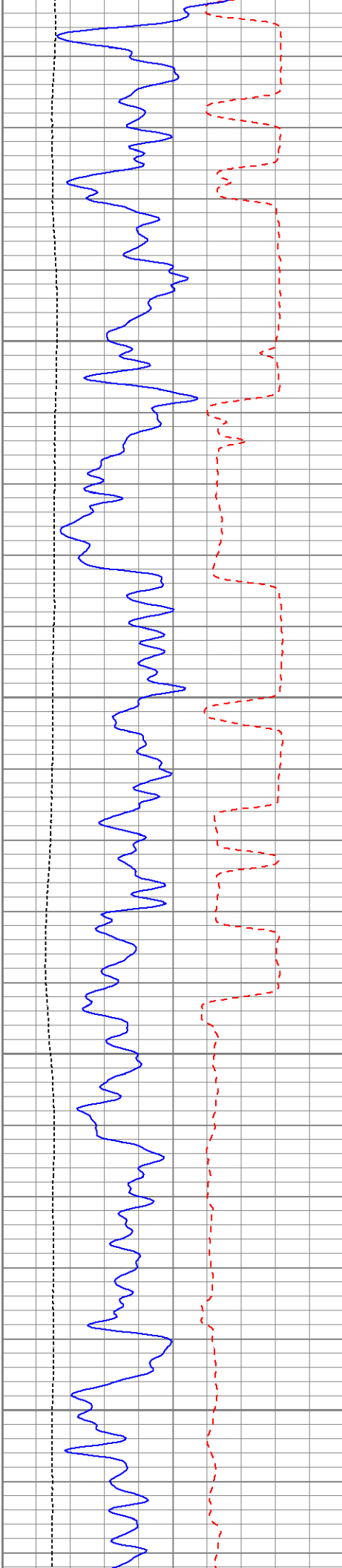
1200

1250







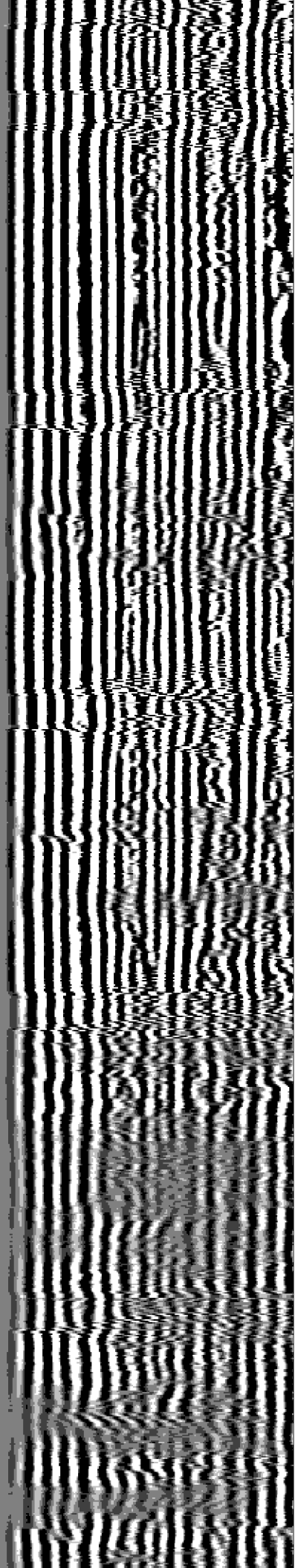
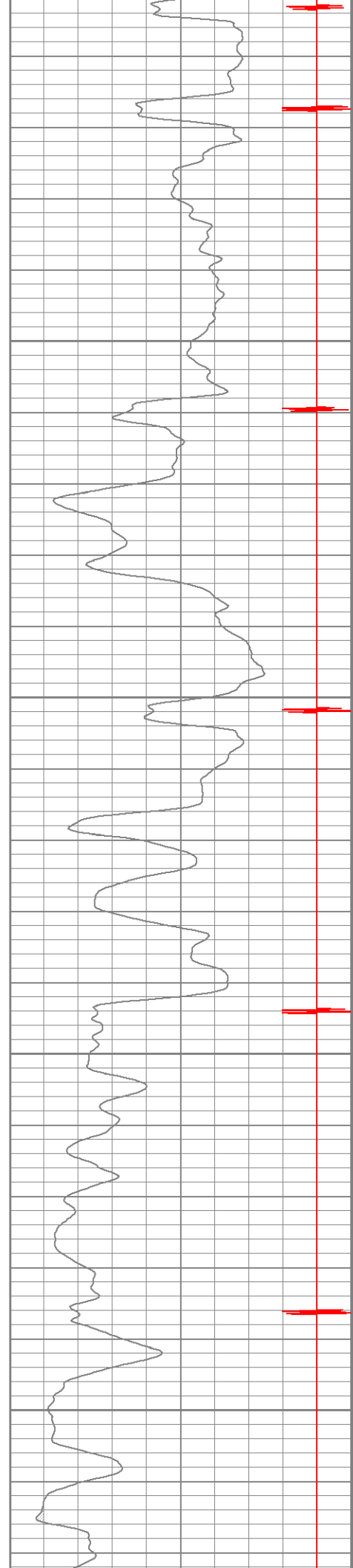


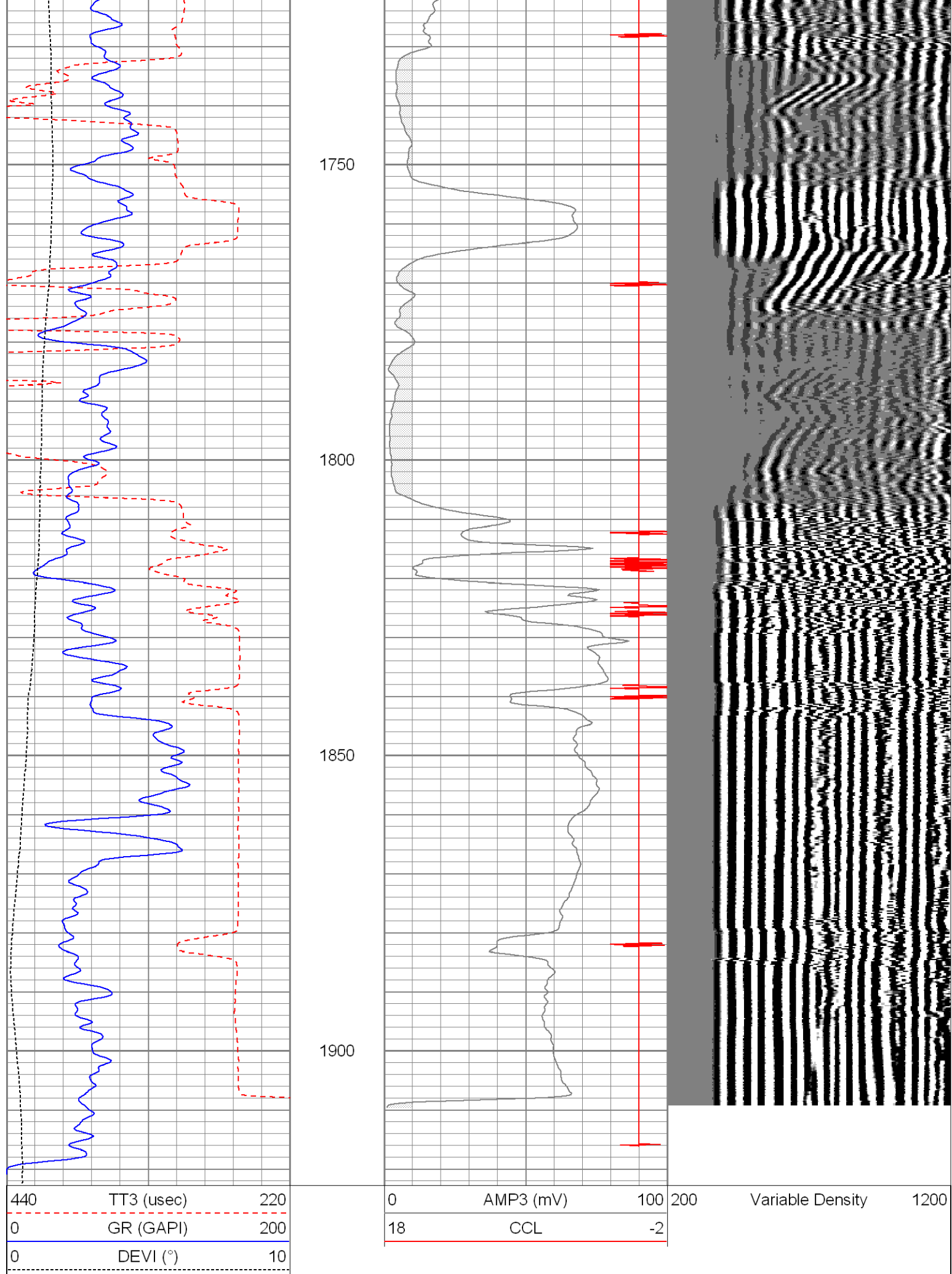
1550

1600

1650

1700



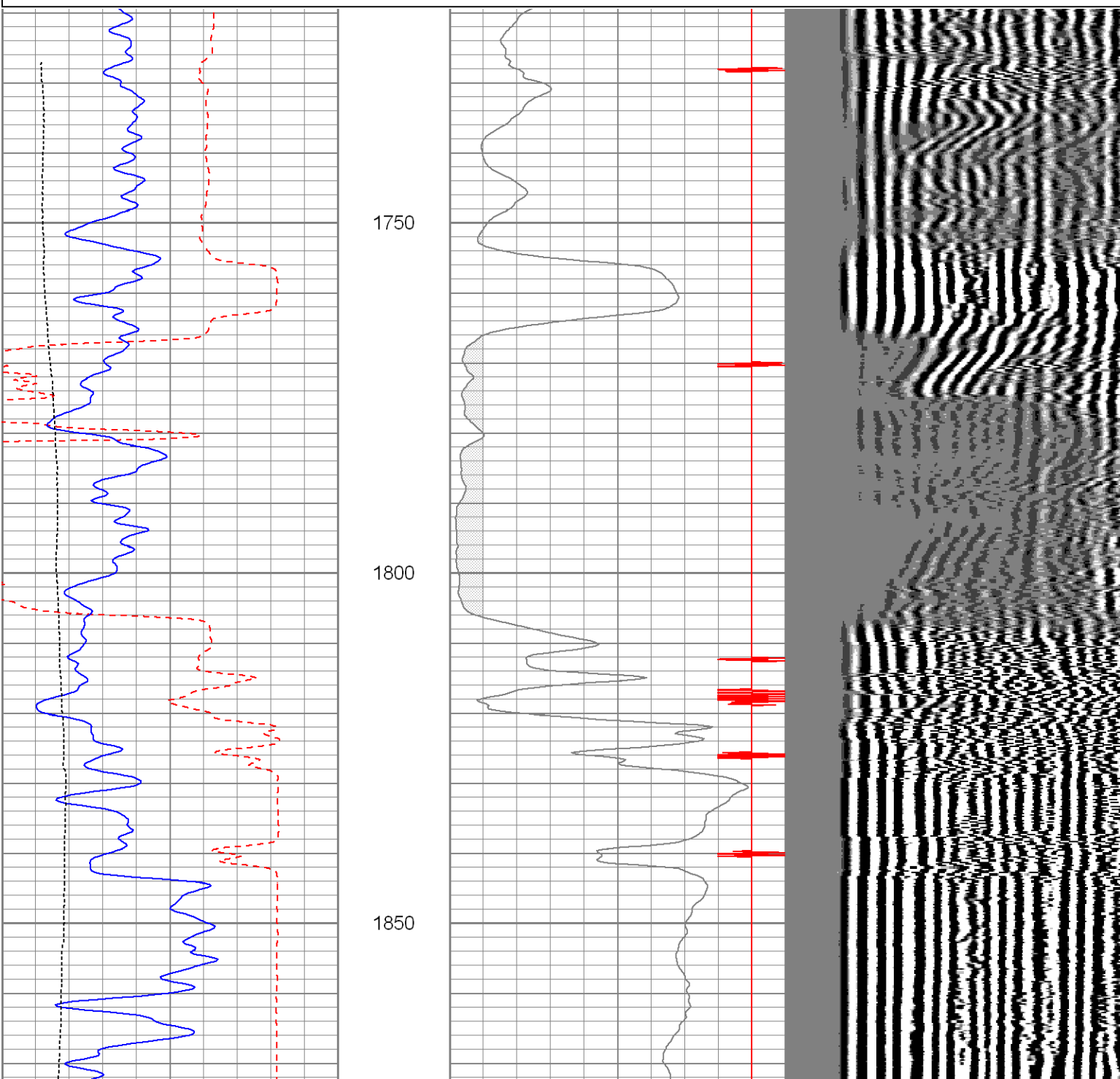


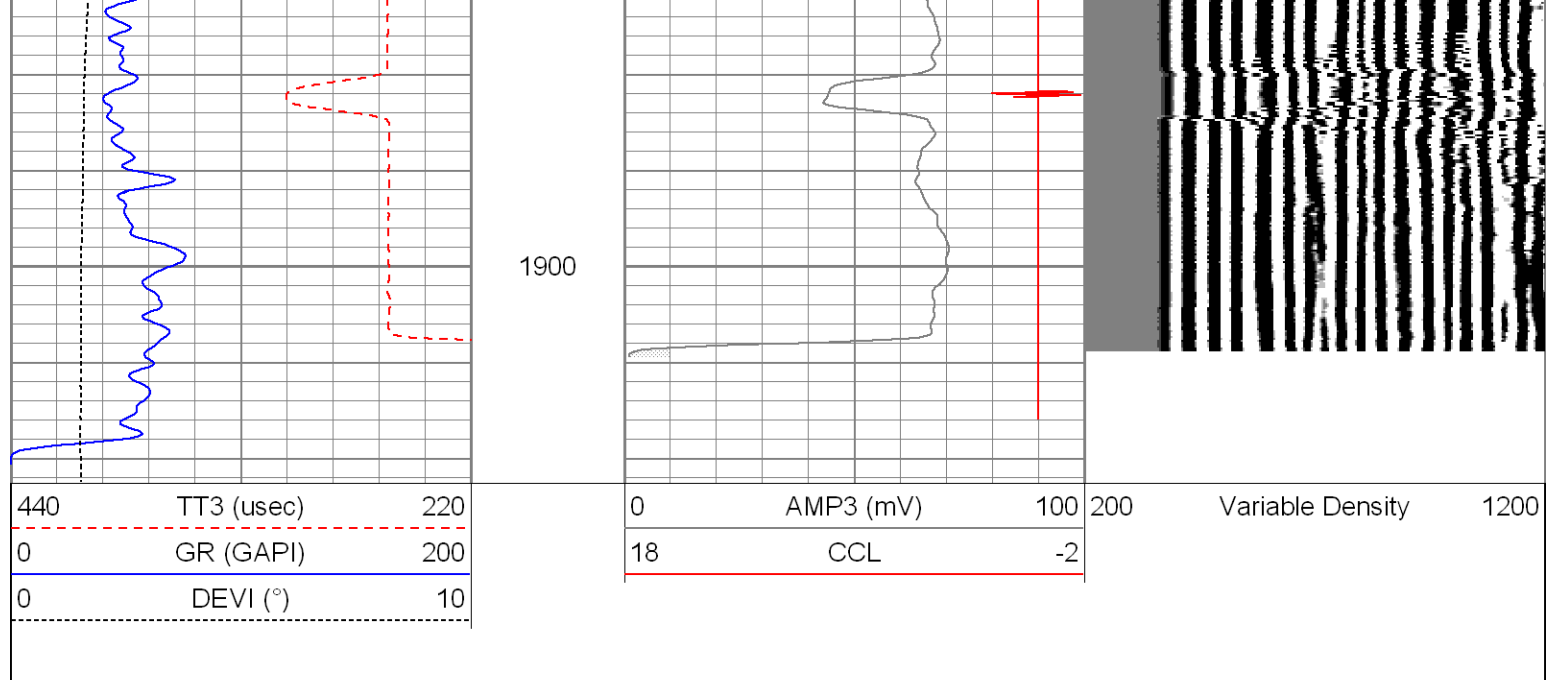
# Repeat Pass

Database File: vallejo 32-19cbl.db  
 Dataset Pathname: pass1.1  
 Presentation Format: cbl dig  
 Dataset Creation: Wed Oct 19 19:15:26 2011 by Calc SCH 110722  
 Charted by: Depth in Feet scaled 1:240

440	TT3 (usec)	220
0	GR (GAPI)	200
0	DEVI (°)	10

0	AMP3 (mV)	100	200	Variable Density	1200
18	CCL	-2			





### Calibration Report

Database File: vallejo 32-19cbl.db  
 Dataset Pathname: pass2  
 Dataset Creation: Wed Oct 19 14:21:31 2011 by Log SCH 110722

### Gamma Ray Calibration Report

Serial Number: 081014  
 Tool Model: 275D\_INC  
 Performed: Thu Sep 02 12:34:39 2010

Calibrator Value: 1.0      GAPI

Background Reading: 0.0      cps  
 Calibrator Reading: 1.0      cps

Sensitivity: 1.0000      GAPI/cps

### Inclinometer Calibration Report

Performed: Thu Sep 02 12:35:05 2010

	Low Read.	High Read.	Low Ref.	High Ref.	
X Accelerometer	-3589.40	3580.00	-1.00	1.00	gee
Y Accelerometer	-3673.00	3502.20	-1.00	1.00	gee
Z Accelerometer					

### Cement Bond Log Calibration Report

Serial Number: 080201  
 Tool Model: DigitalCBL  
 Performed: Tue Oct 11 12:12:54 2011

Depth: 729.191      ft  
 Casing Diameter: 5.5      in

3' Spacing      5' Spacing

Signal Zero: 1      0      mV

Calibrated Amplitude:	71.921	71.921	mV
Reading at Signal Zero:	-0.0012207	-0.00124512	V
Reading in Free Pipe:	1.2	-0.975732	V
Gain:	59.0408	-73.8039	
Offset:	1.07207	-0.0918946	

[illegible]