

Company	Pioneer Natural Resources	Company	Pioneer Natural Resources
Well	Vallejo 32-19	Well	Vallejo 32-19
Field	Purgatoire River	Field	Purgatoire River
County	Las Animas	County	Las Animas
State	Colorado	State	Colorado
Location:	API #: 05 071 09338 00	Other Services	CDNL
SEC 19 TWP 33S RGE 67W	1637' FNL & 1450' FEL		
Permanent Datum	Ground Level	Elevation	7341'
Log Measured From	Kelly Bushing 4' AGL	K.B. 7345'	
Drilling Measured From	Kelly Bushing	D.F. -----	
		G.L. 7341'	
Date	10-13-11		
Run Number	One		
Depth Driller	1965'		
Depth Logger	1956'		
Bottom Logged Interval	1954'		
Top Log Interval	Surface Casing		
Casing Driller	8 5/8" @ 336'		
Casing Logger	336'		
Bit Size	7 7/8"		
Type Fluid in Hole	Water		
Density / Viscosity	///		
pH / Fluid Loss	///		
Source of Sample	///		
Rm @ Meas. Temp	///		
Rmf @ Meas. Temp	///		
Rmc @ Meas. Temp	///		
Source of Rmf / Rmc	///		
Rm @ BHT	///		
Time Circulation Stopped	8:30 P.M.		
Time Logger on Bottom	11:30 P.M.		
Maximum Recorded Temperature	90 DEG F		
Equipment Number	T590		
Location	Trinidad		
Recorded By	C. Sisneros		
Witnessed By	Mr. Derrick Berry	Mr. Curtis Adam	

<<< Fold Here >>>

All interpretations are opinions based on inferences from electrical or other measurements and we cannot and do not guarantee the accuracy or correctness of any interpretation, and we shall not, except in the case of gross or willful negligence on our part, be liable or responsible for any loss, costs, damages, or expenses incurred or sustained by anyone resulting from any interpretation made by any of our officers, agents or employees. These interpretations are also subject to our general terms and conditions set out in our current Price Schedule.

Comments

Directions:
Rancho Escondido, second left.

Database File: vallejo32-19.db
Dataset Pathname: pass2.1
Presentation Format: iel
Dataset Creation: Thu Oct 13 00:55:29 2011 by Calc Open-Cased 110302
Charted by: Depth in Feet scaled 1:240

0	GR (GAPI)	200
-200	SP (mV)	0

0.2	DIR (Ohm-m)	2000
0.2	SN (Ohm-m)	2000

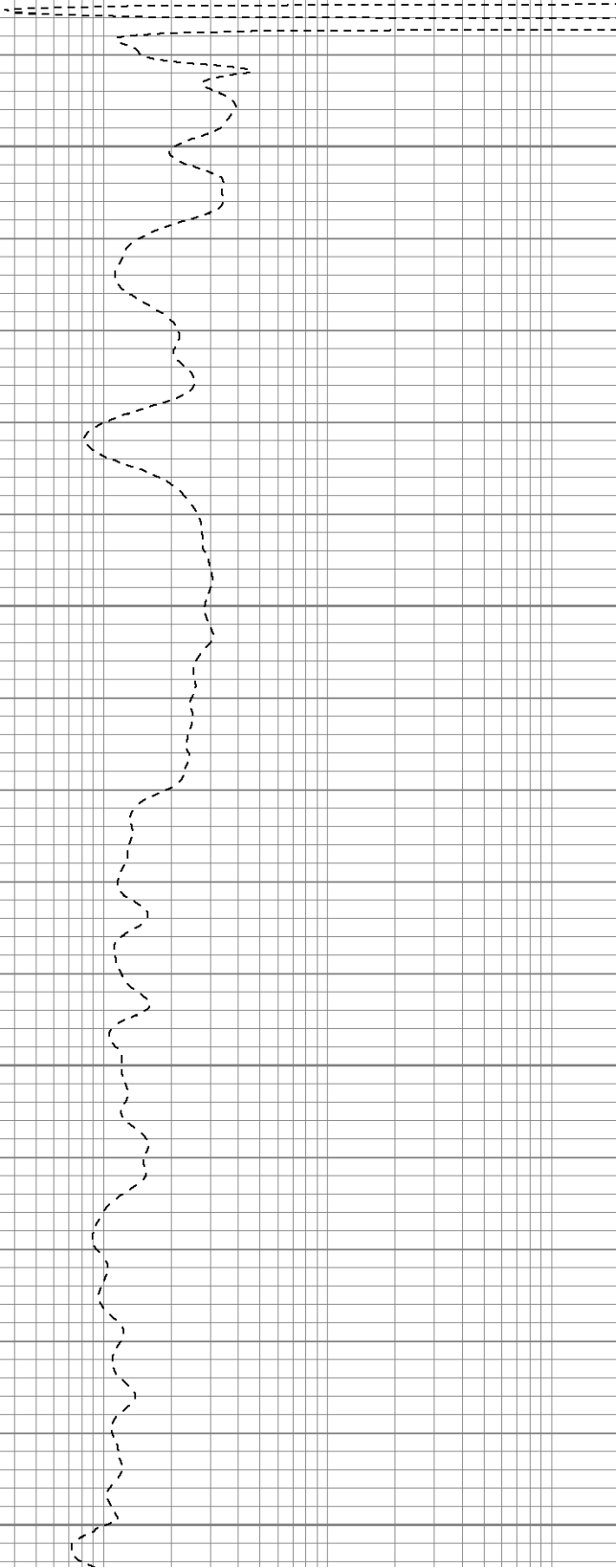
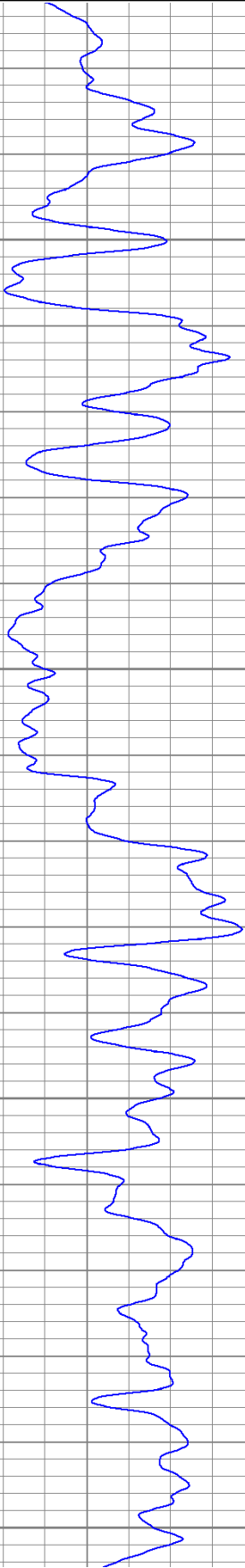
Surface Casing

350

400

450

500



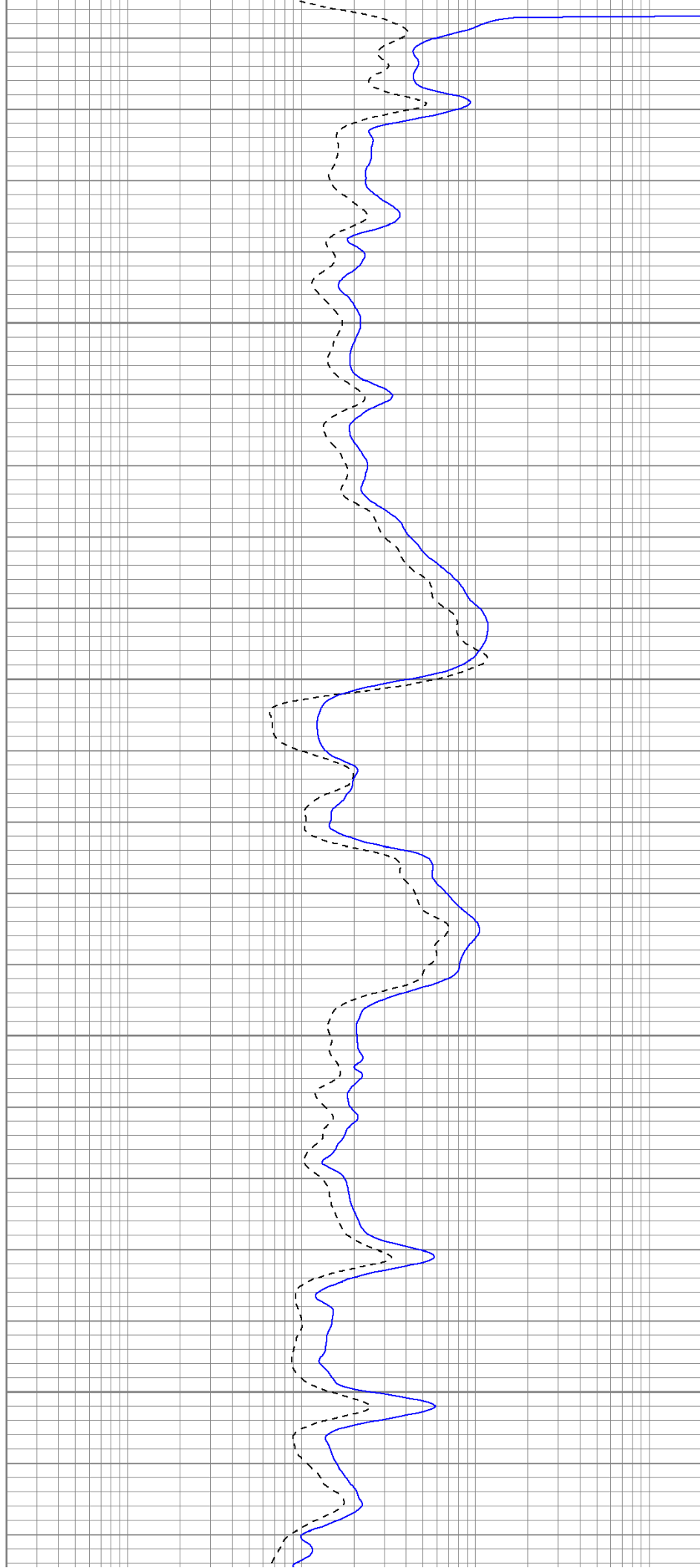
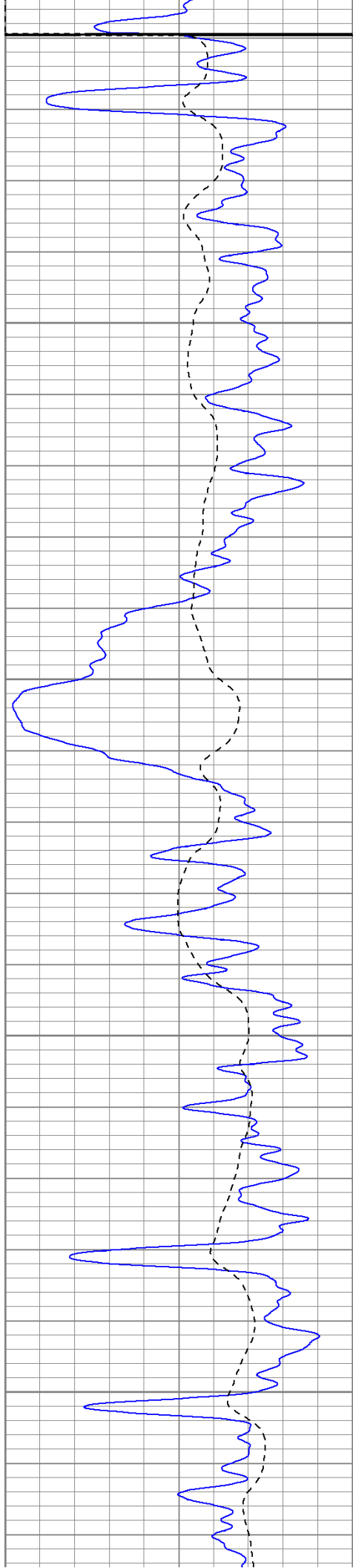
Fluid Level

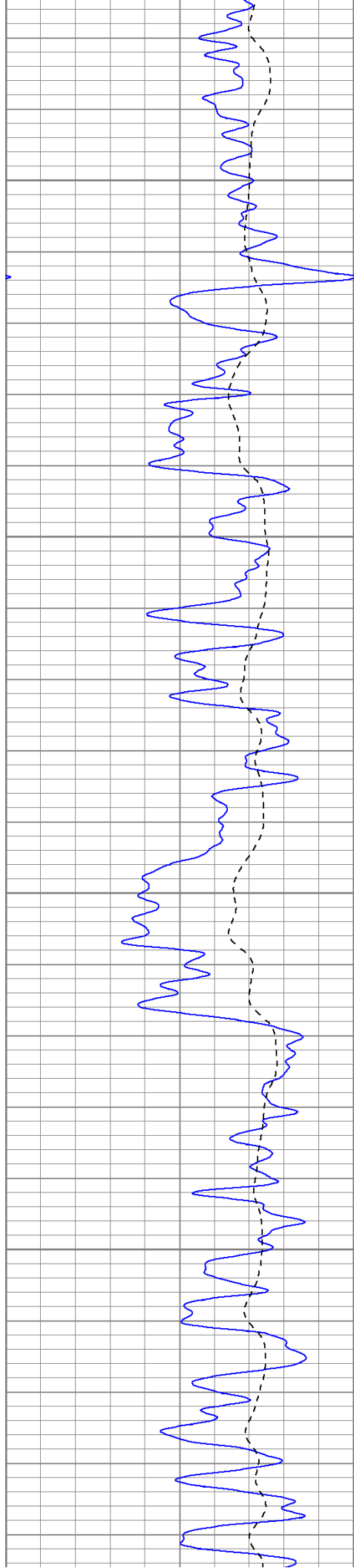
550

600

650

700



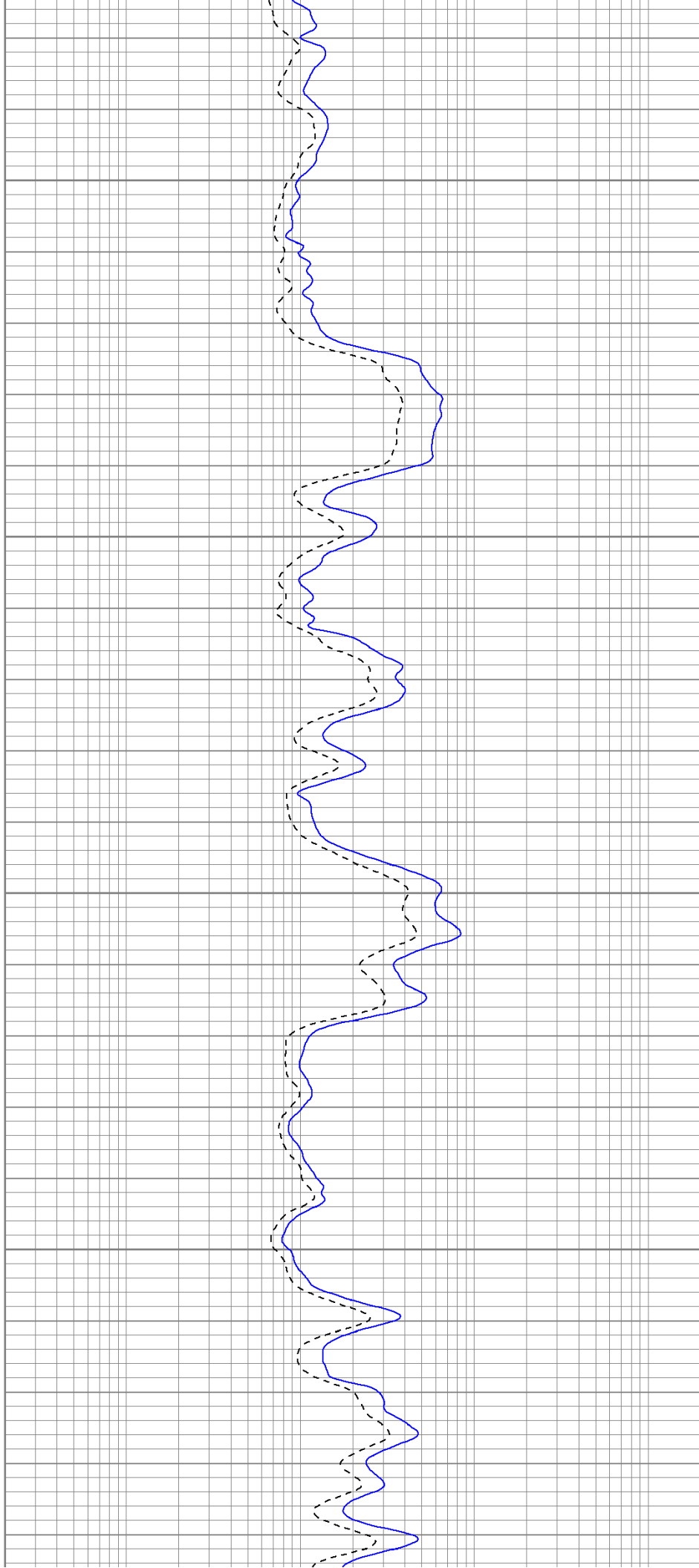


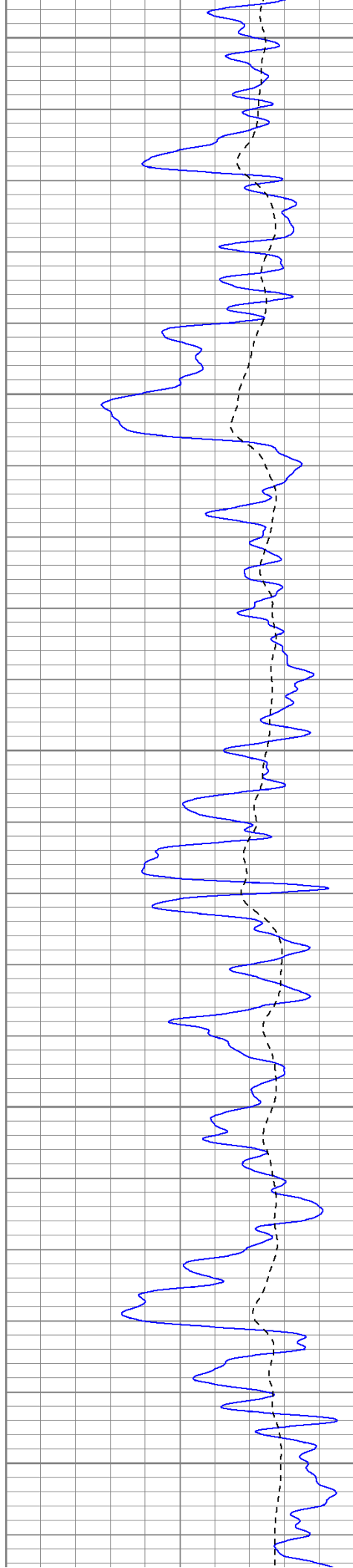
750

800

850

900





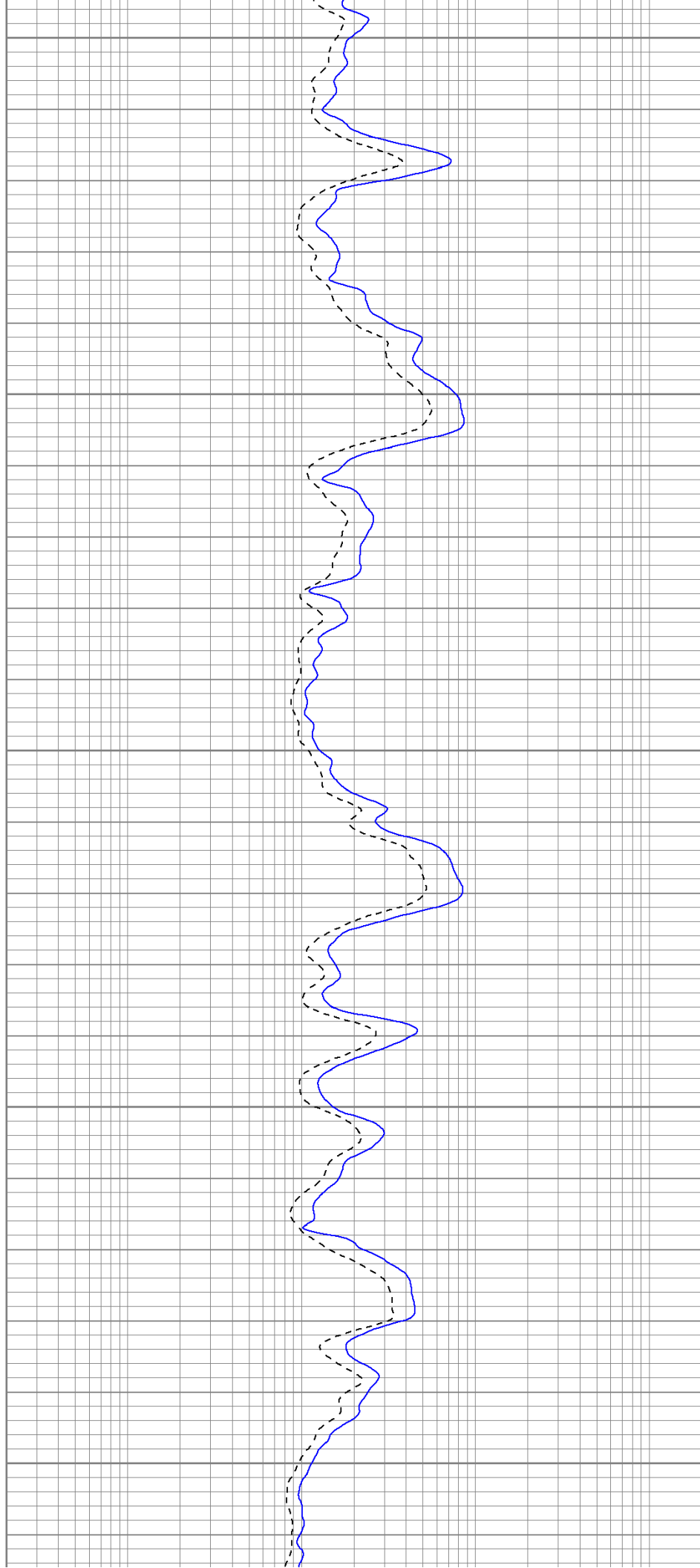
950

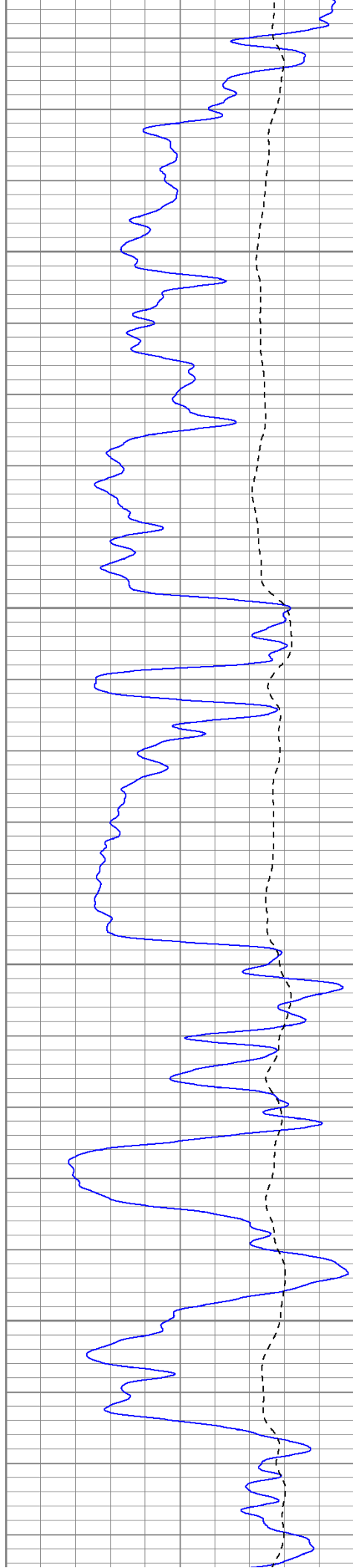
1000

1050

1100

1150



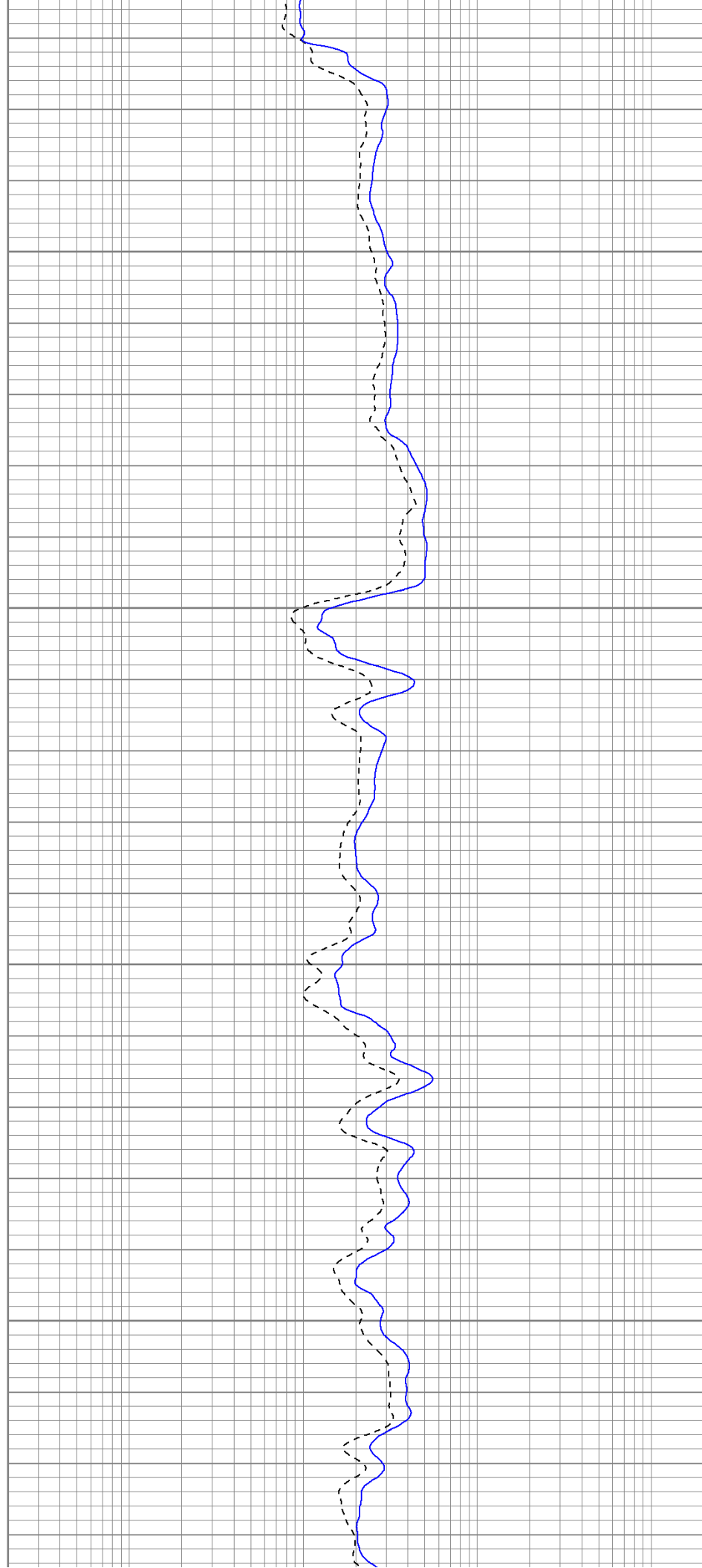


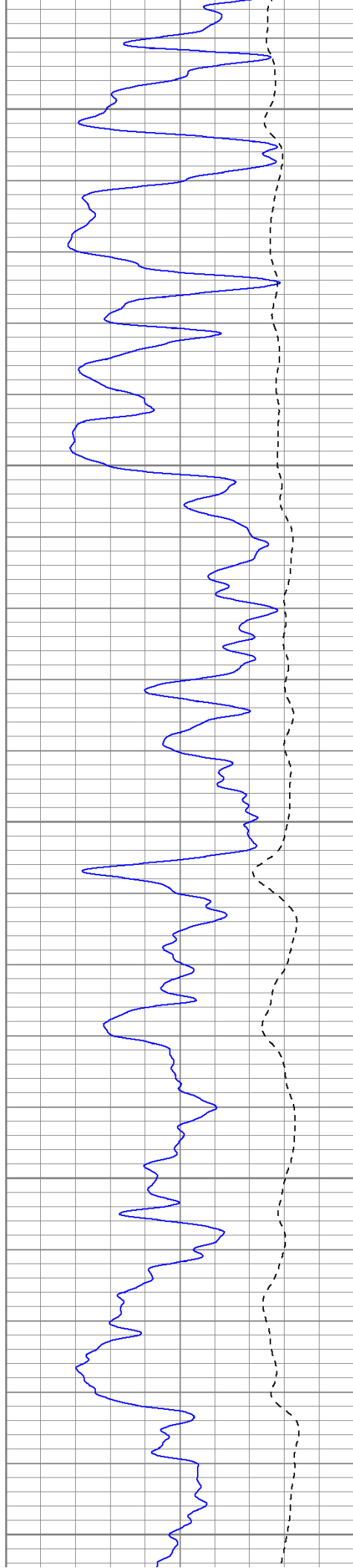
1200

1250

1300

1350





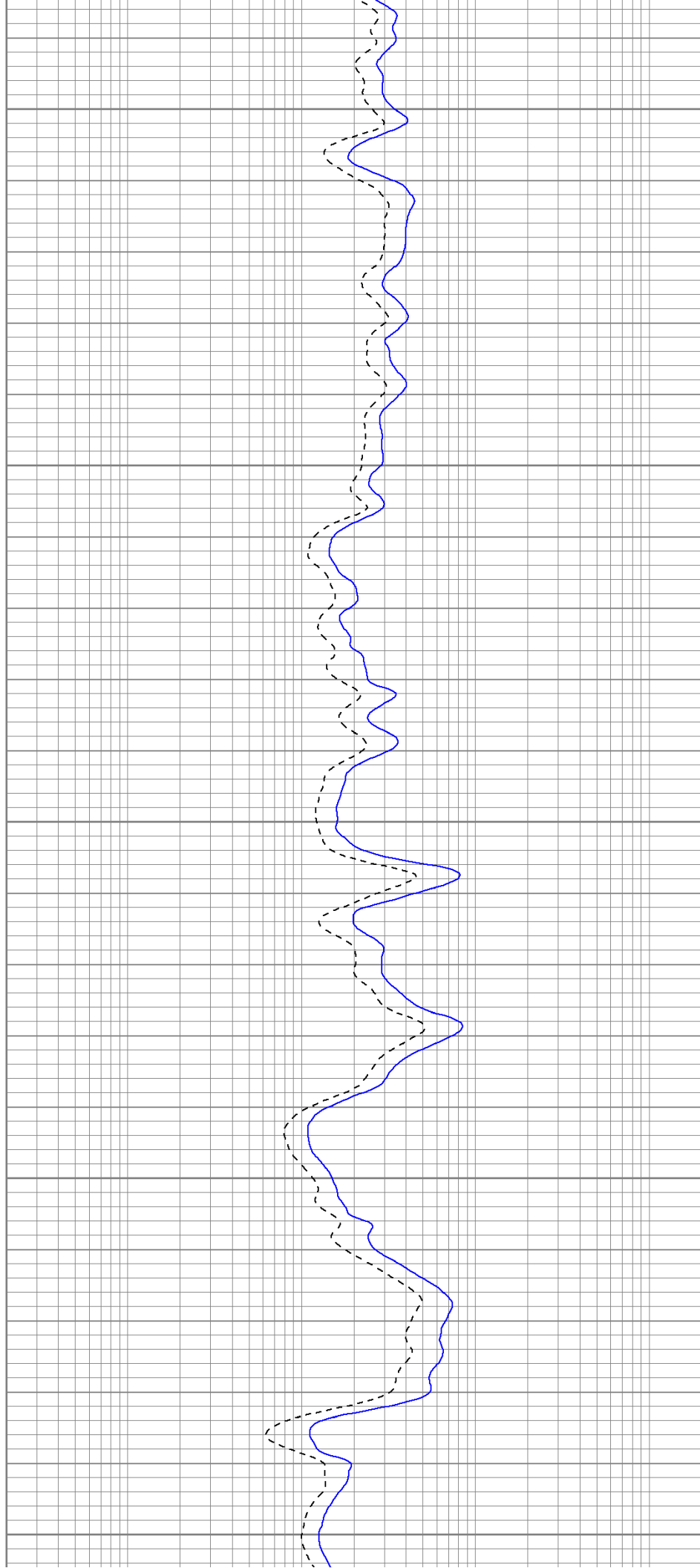
1400

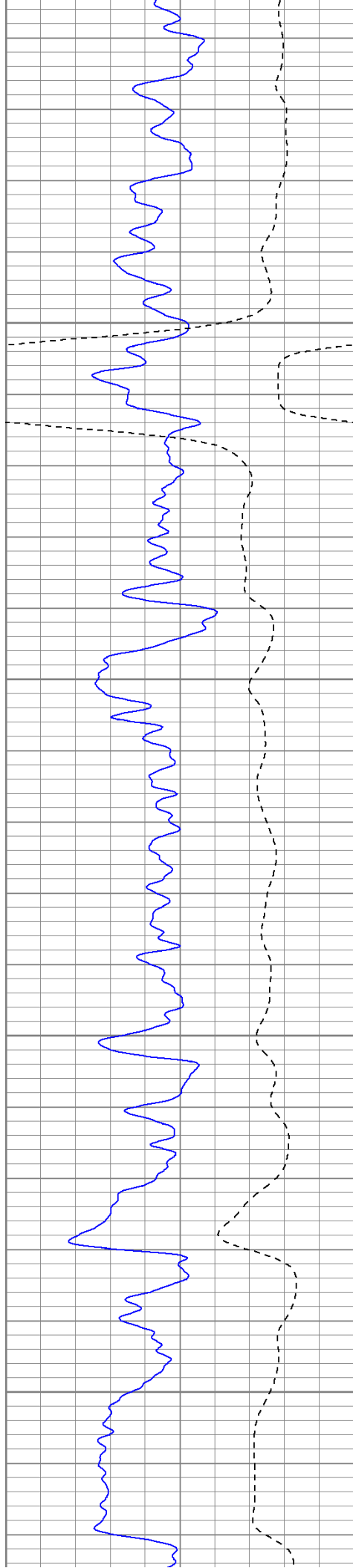
1450

1500

1550

1600



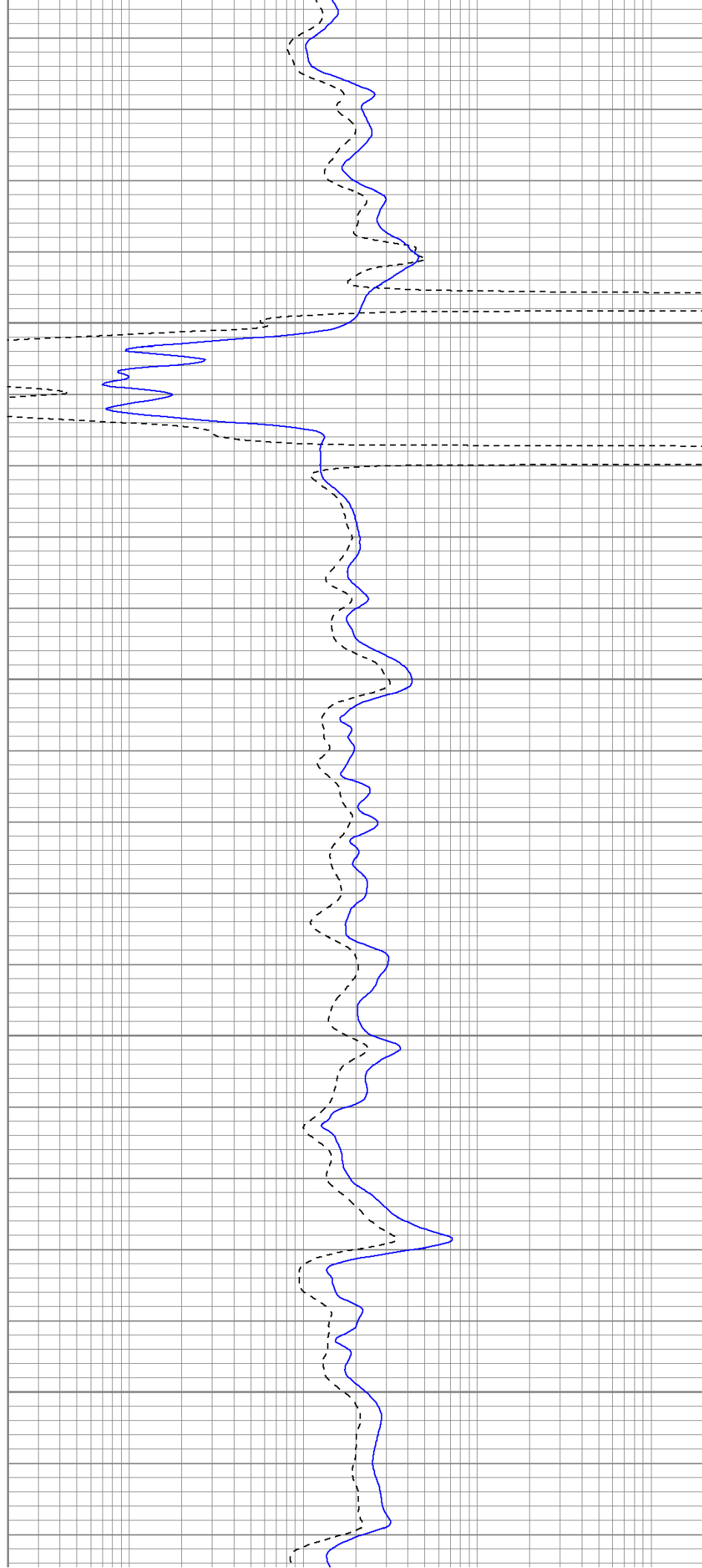


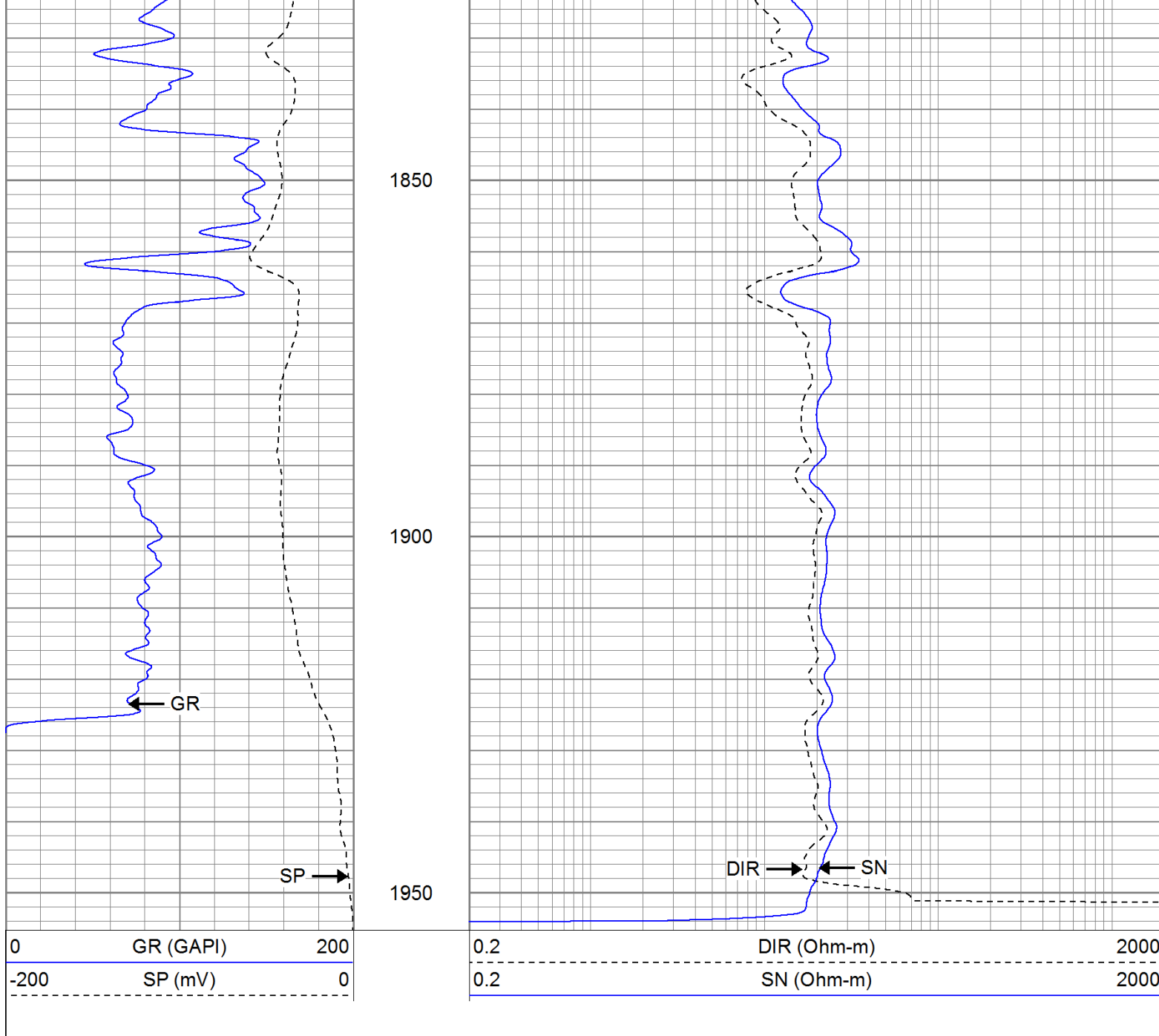
1650

1700

1750

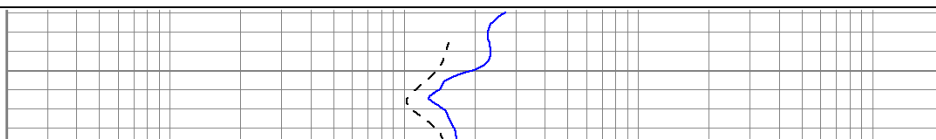
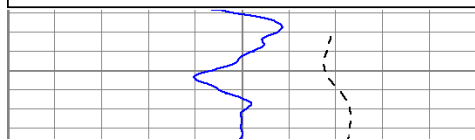
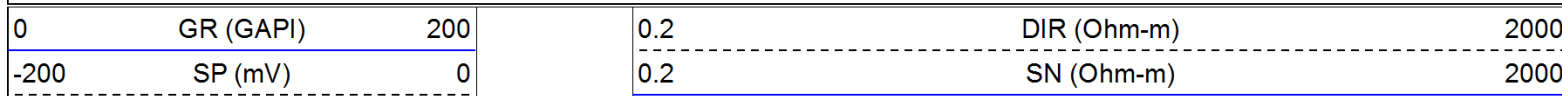
1800

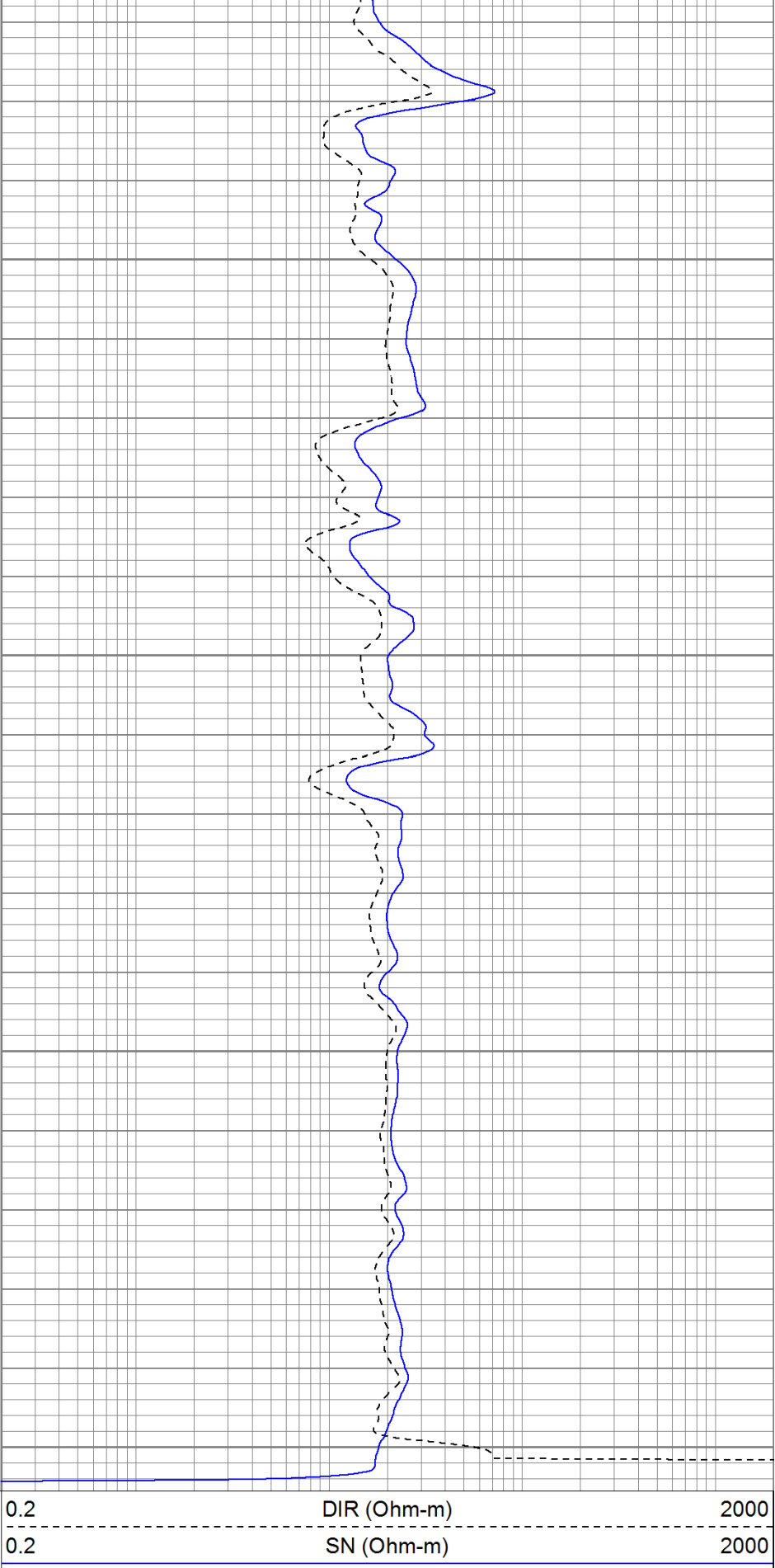
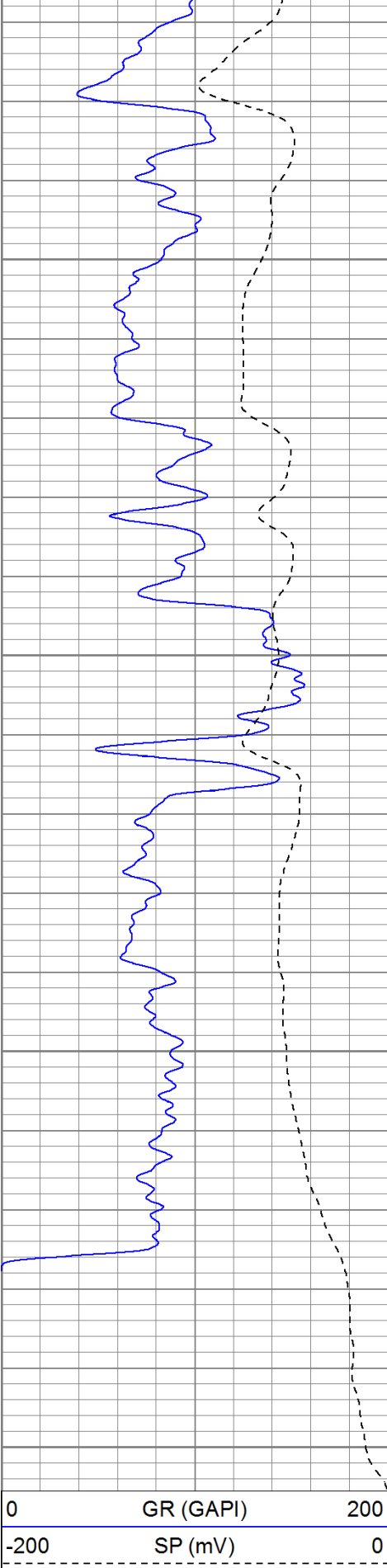




Repeat Pass

Database File: vallejo32-19.db
 Dataset Pathname: pass1.1
 Presentation Format: iel
 Dataset Creation: Thu Oct 13 01:01:30 2011 by Calc Open-Cased 110302
 Charted by: Depth in Feet scaled 1:240





Calibration Report

Database File: vallejo32-19.db
Dataset Pathname: pass1

Induction Tool Calibration Report

Serial Number: 701
 Tool Model: Probe
 Downhole Cal Performed: Wed Jun 08 22:14:25 2011
 Surface Cal Performed: Wed Jun 08 22:14:40 2011
 After Survey Verification Performed:

Surface Calibration:	Air	Loop	
Conductivity Reference:	0.000	500.000	mmho
Conductivity Reading:	0.006	0.644	V
Internal Reference:	Zero	Cal	
Conductivity Reference:	0.000	500.000	mmho
Conductivity Reading:	0.007	0.643	V

Downhole Calibration:	Internal Zero	Internal Cal	
Conductivity Reference:	0.703	499.163	mmho
Conductivity Reading:	0.000	0.000	V
Short Normal Reference:	0.000	20.000	Ohm-m
Short Normal Reading:	0.005	0.214	V

Results:	Gain	Offset
Loop Conductivity:	783.886	-4.674
Downhole Correction:	1.000	0.000
Short Normal Resistivity:	95.281	-2.000

After Survey Verification	Internal Zero	Internal Cal	
Conductivity Reading:	0.000	0.000	V
Conductivity Result:	0.000	0.000	mmho
Short Normal Reading:	0.000	0.000	V
Short Normal Result:	0.000	0.000	Ohm-m

Compensated Density Calibration Report

Serial-Model: 901-2.75POH
 Source / Verifier: /
 Master Calibration Performed: Mon Oct 10 09:20:39 2011
 Before Survey Verification Performed:
 After Survey Verification Performed:

Master Calibration

	Density		Far Detector	Near Detector	
Magnesium	1.710	g/cc	1001.79	578.48	cps
Aluminum	2.590	g/cc	180.36	300.39	cps
Spine Angle = 69.08			Density/Spine Ratio = 0.479		
	Size		Reading		
Small Ring	8.00	in	2.50	V	
Large Ring	16.00	in	4.57	V	

Before Survey Verification

Target	Measured
g/cc	g/cc
g/cc	g/cc
g/cc	g/cc

After Survey Verification

Target	Measured
g/cc	g/cc

	g/cc g/cc	g/cc g/cc
Neutron Calibration Report		
Serial Number:	803	
Tool Model:	2.75POH	
Performed:	Mon Oct 10 09:27:42 2011	
Calibrator Value:	1	NAPI
Calibrator Reading:	1	cps
Sensitivity:	1	NAPI/cps
Gamma Ray Calibration Report		
Serial Number:	804	
Tool Model:	2.75POH	
Performed:	Mon Oct 10 09:53:04 2011	
Calibrator Value:	1.0	GAPI
Background Reading:	0.0	cps
Calibrator Reading:	1.0	cps
Sensitivity:	0.6500	GAPI/cps