

OPERATOR: WIEPKING - FULLERTON ENERGY LLC  
WELL NAME: BUBBA STATE 3

TEST NO: 3  
TICKET NO: 2879

Contractor Murfin Drilling  
Rig No. 25  
Spot SE/NW  
Sec 20  
Twp 10 S  
Rng 55 W  
Field Great Plains  
County Lincoln  
State Colorado  
Elevation 5207' KB - 5195' GL  
Formation Pawnee "B"

Surface Choke 1"  
Bottom Choke 5/8"  
Hole Size 7 7/8"  
Core Hole Size  
DP Size & Wt 4 1/2" 16.60  
Wt Pipe  
ID of DC 2 3/8"  
Length of DC 540'  
Total Depth 7018'  
Type of Test Open Hole Dst  
Interval 6998'- 7018'

Mud Type Chemical/Gel  
Weight 8.9  
Viscosity 72  
Water Loss 7.2  
Filter Cake  
RW 1.3 @ 86 Deg F  
Chlorides 3,605 Ppm  
Co. Rep. Gregg Smith  
Tester Mark Green

## Pipe Recovery:

Reverse circulated:  
1290' Gassy water and oil = 13.62 bbl.

## Surface blow:

1st Flow: Began with a good blow off bottom of bucket, increased to 3.0 psi at 10 minutes; decreased to 2.0 psi at 19 minutes and 1.0 psi at 30 minutes. Gas to surface 25 minutes into the initial shut in period.

2nd Flow: Began with a good blow, increased to bottom of bucket at 7 minutes; increased after 26 minutes fluctuating 8.0 oz - 10.0 oz.

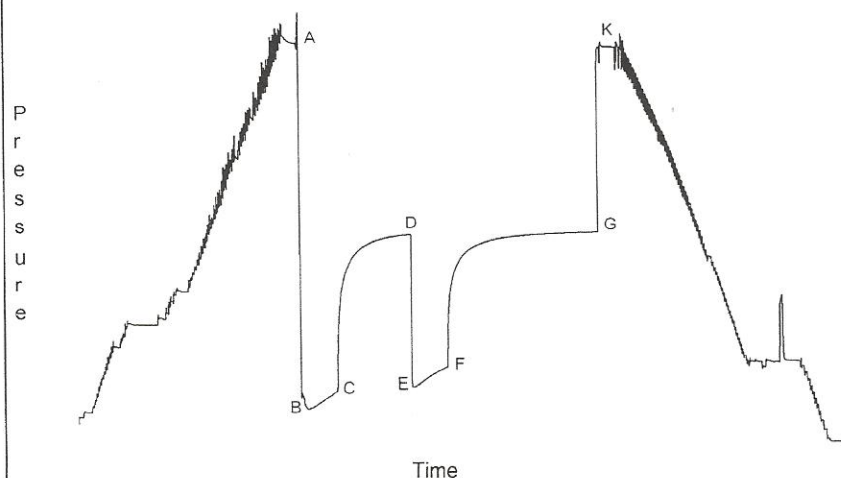
## Properties:

## Downhole Sampler:

Pressure in Sampler 375 psig  
Volume of Sampler 1850 cc  
Volume of Sample 1800 cc  
Oil: 150 cc  
Water: 1650 cc  
Mud: 0 cc  
Gas: 2.05 cu ft  
Other: 0  
Rw:  
Chlorides:  
Gas/Oil Ratio 2187/1 cu.-ft./bbl.  
Gravity API @ 60 Deg F

Opened Tool @ 00:10 hrs on 08/19/2011  
Reported Corrected  
Flow 1 30 30 min  
Shut-in 1 60 59 min  
Flow 2 30 29 min  
Shut-in 2 120 121 min

Downhole Pressure Chart



## Downhole Pressure Data

Recorder Type JMCO Memory Recorder  
No. 30024 Cap 10000 psi  
Depth 6977 ft.  
Inside X Outside  
Psi(a) Deg (f)  
Initial Hydrostatic [A] 3277  
Final Hydrostatic [K] 3241  
Initial Flow 1 [B] 314 169  
Final Flow 1 [C] 444 185  
Initial Flow 2 [E] 478 178  
Final Flow 2 [F] 639 187  
Shut-in 1 [D] 1699 176  
Shut-in 2 [G] 1710 176  
Maximum Temperature 187

OPERATOR: WIEPKING - FULLERTON ENERGY LLC  
WELL NAME: BUBBA STATE 3

FORMATION: PAWNEE "B"  
INTERVAL: 6998 - 7018'

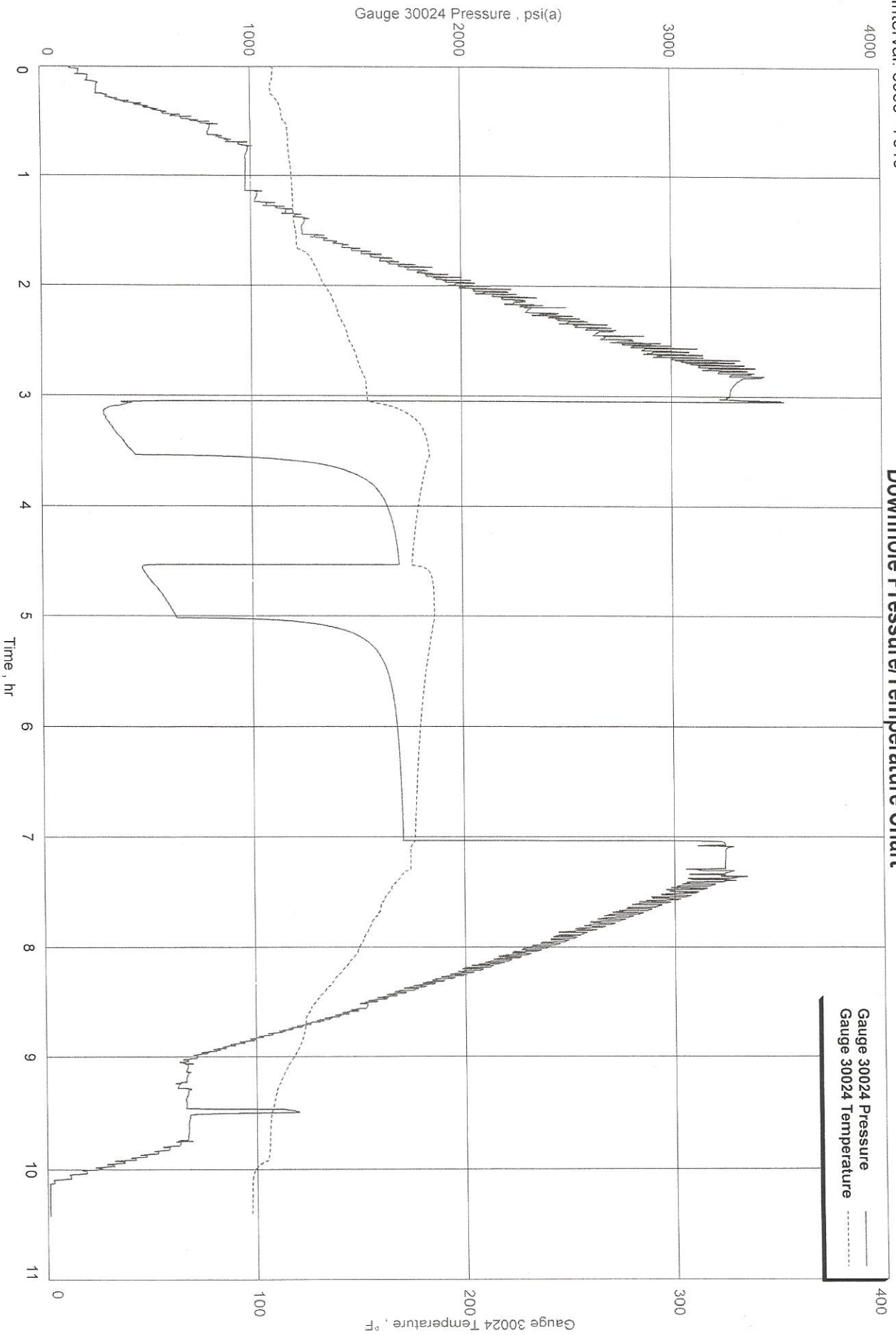
TEST NO: 3  
DATE: 08/19/2011



Wiepking - Fullerton Energy LLC  
Interval: 6998' - 7018'

# Downhole Pressure/Temperature Chart

Bubba State 3, Dst 3  
Formation: Pawnee "B"

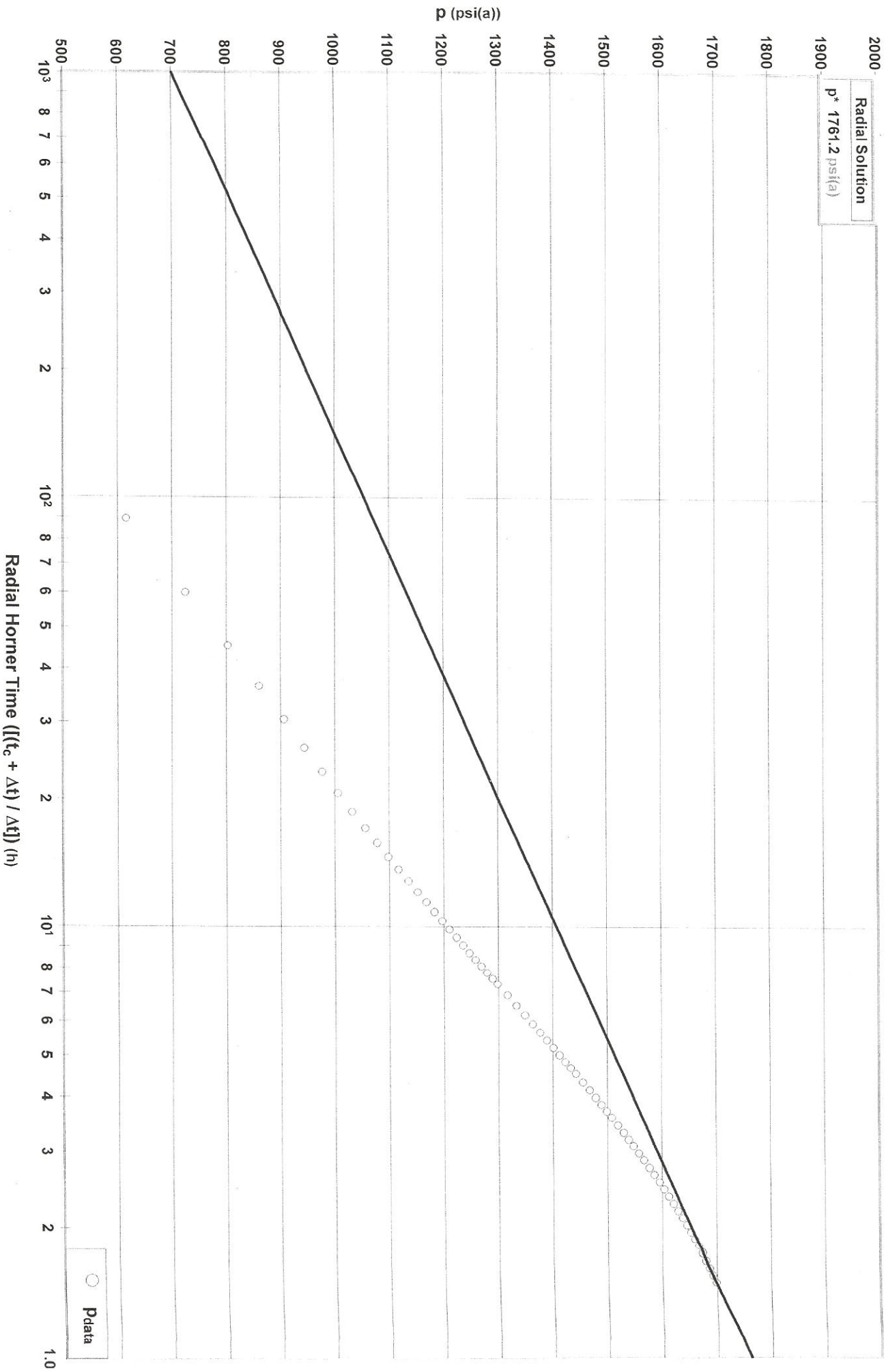


Wiepking - Fullerton Energy LLC  
Interval: 6998' - 7018'

# Diagnostic Plot - Shut In, 1

Radial

Bubba State 3, Dst 3  
Formation: Pawnee "B"



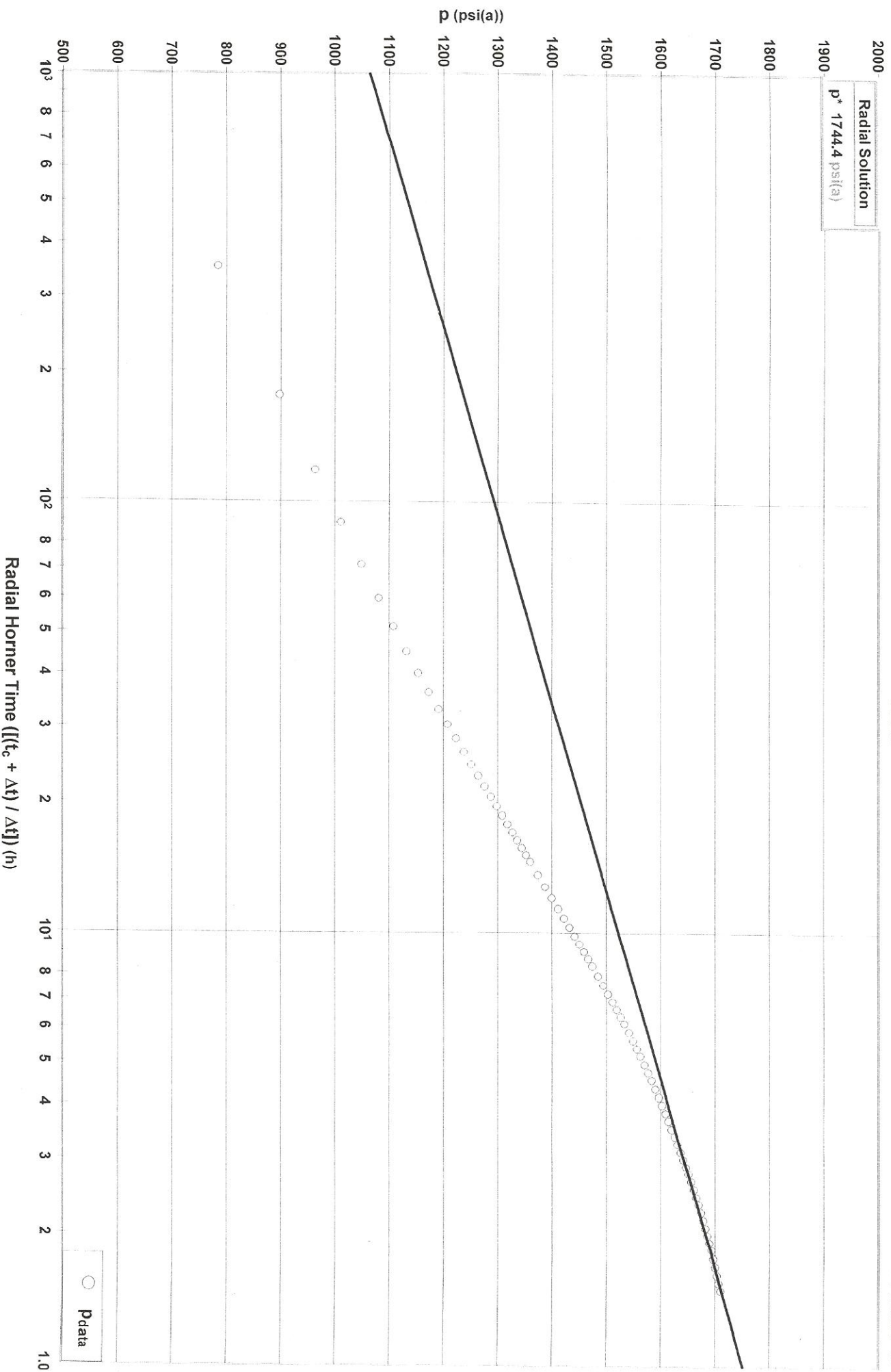
Wiepking - Fullerton Energy LLC  
Interval: 6998' - 7018'

# Diagnostic Plot - Shut In 2

Bubba State 3, Dst 3  
Formation: Pawnee "B"

Radial Solution

p\* 1744.4 psi(a)



Wiepking - Fullerton Energy LLC  
Interval: 6998' - 7018'

# Diagnostic Plot - Shut In 2

Bubba State 3, Dst 3  
Formation: Pawnee "B"

