

OPERATOR: WIEPKING - FULLERTON ENERGY LLC
WELL NAME: BUBBA STATE 3

TEST NO: 4
TICKET NO: 2880

Contractor Murfin Drilling
Rig No. 25
Spot SE/NW
Sec 20
Twp 10 S
Rng 55 W
Field Great Plains
County Lincoln
State Colorado
Elevation 5207' KB - 5195' GL
Formation Cherokee "A"

Surface Choke 1"
Bottom Choke 5/8"
Hole Size 7 7/8"
Core Hole Size
DP Size & Wt 4 1/2" 16.60
Wt Pipe
ID of DC 2 3/8"
Length of DC 540'
Total Depth 7094'
Type of Test Open Hole Dst
Interval 7058'- 7094'

Mud Type Chemical/Gel
Weight 9.1
Viscosity 69
Water Loss 8.0
Filter Cake
RW 1.3 @ 86 Deg F
Chlorides 3,605 Ppm

Co. Rep. Gregg Smith
Tester Mark Green

Pipe Recovery:

450' Gas above fluid
360' Total fluid = 1.98 bbl., consisting of:
180' Gas cut mud = 0.99 bbl.
180' Gassy, oil cut mud = 0.99 bbl.

Surface blow:

1st Flow: Began with a 1/4" blow, increased to 2" at 15 minutes and 2 1/2" at 30 minutes.
2nd Flow: Began with a 1/4" blow, increased to bottom of bucket at 14 minutes; began to decrease after 35 minutes to 8" at 39 minutes, then increased to bottom of bucket at 56 minutes and remained thru flow period.

Remarks:

The pressure data indicates the tool was set on fill was opened then slid to bottom and closed.
After tagging bottom the tool was re-opened for the pre flow period. The data indicates slippage for approximately 15 minutes of the pre flow period.

Properties:

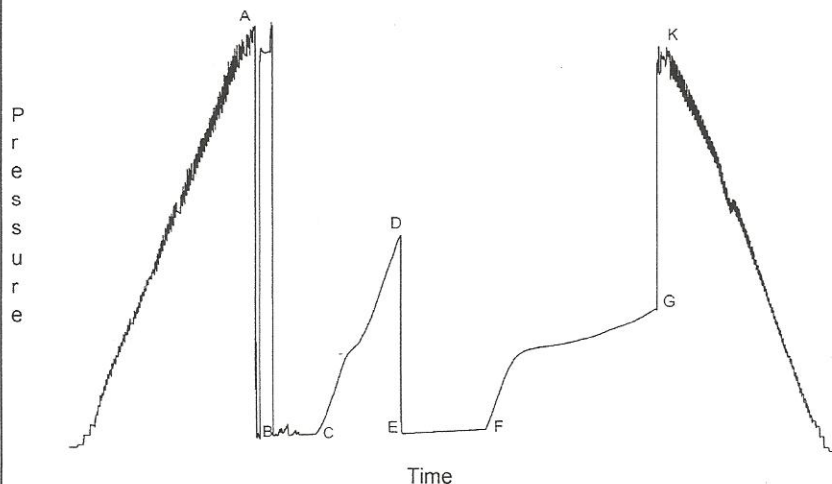
Downhole Sampler:

Pressure in Sampler 150 psig
Volume of Sampler 1850 cc
Volume of Sample 1850 cc
Oil: -- cc
Water: 0 cc
Mud: Gas & Oil cut 1850 cc
Gas: -- cu ft
Other: 0
Rw:
Chlorides:
Gas/Oil Ratio
Gravity API @ 60 Deg F

Opened Tool @ 07:56 hrs on 08/21/2011

	Reported	Corrected	
Flow 1	30	30	min
Shut-in 1	60	59	min
Flow 2	60	59	min
Shut-in 2	120	119	min

Downhole Pressure Chart



Downhole Pressure Data

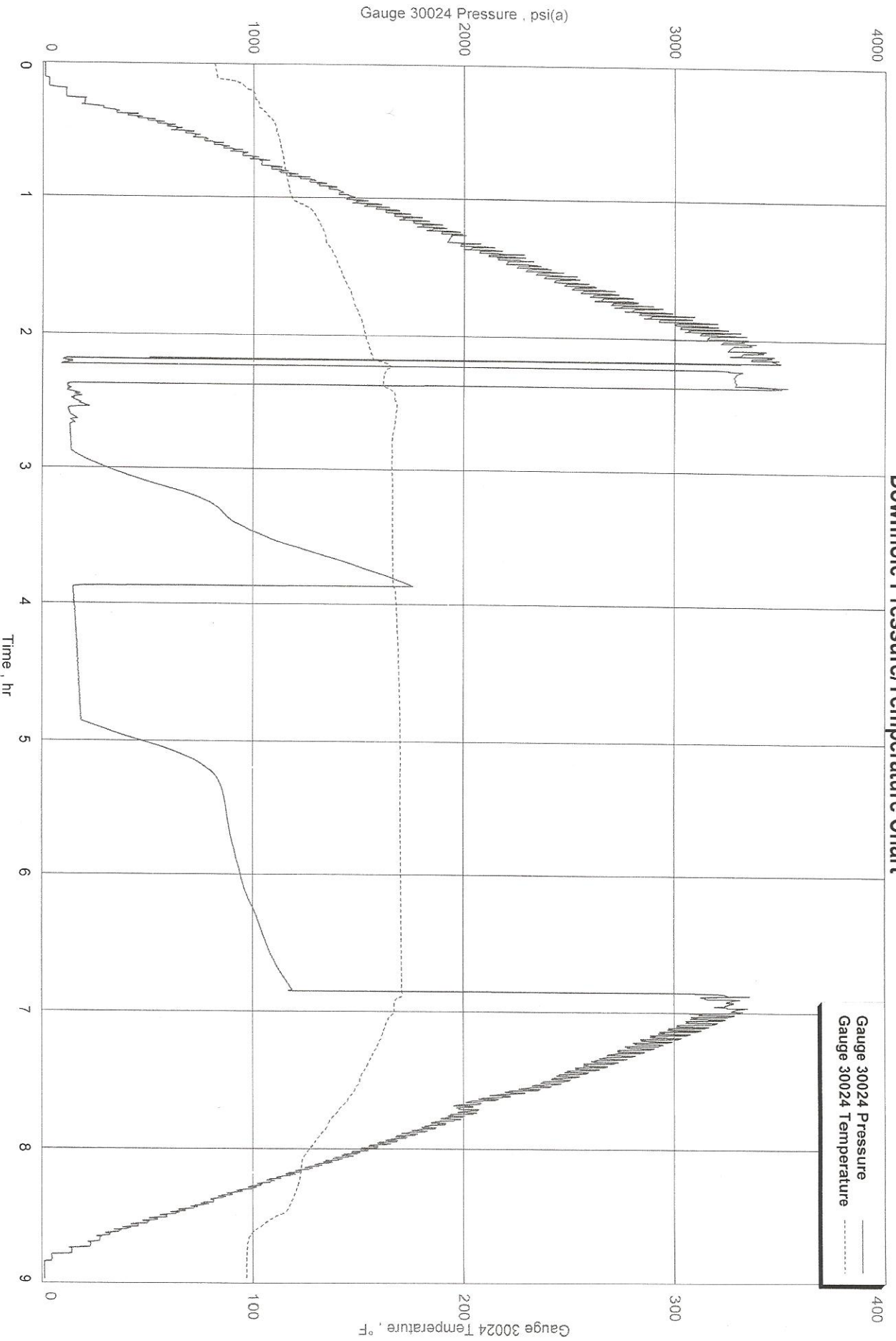
Recorder Type JMCO Memory Recorder
No. 30024 Cap 10000 psi
Depth 7038 ft.
Inside x Outside
Psi(a) Deg (f)
Initial Hydrostatic [A] 3256
Final Hydrostatic [K] 3249
Initial Flow 1 [B] 118 162
Final Flow 1 [C] 137 166
Initial Flow 2 [E] 148 168
Final Flow 2 [F] 187 170
Shut-in 1 [D] 1759 167
Shut-in 2 [G] 1187 171
Maximum Temperature 171

OPERATOR: WIEPKING - FULLERTON ENERGY LLC
WELL NAME: BUBBA STATE 3
FORMATION: CHEROKEE "A"
INTERVAL: 7058'- 7094'

TEST NO: 4
DATE: 08/21/2011



Downhole Pressure/Temperature Chart

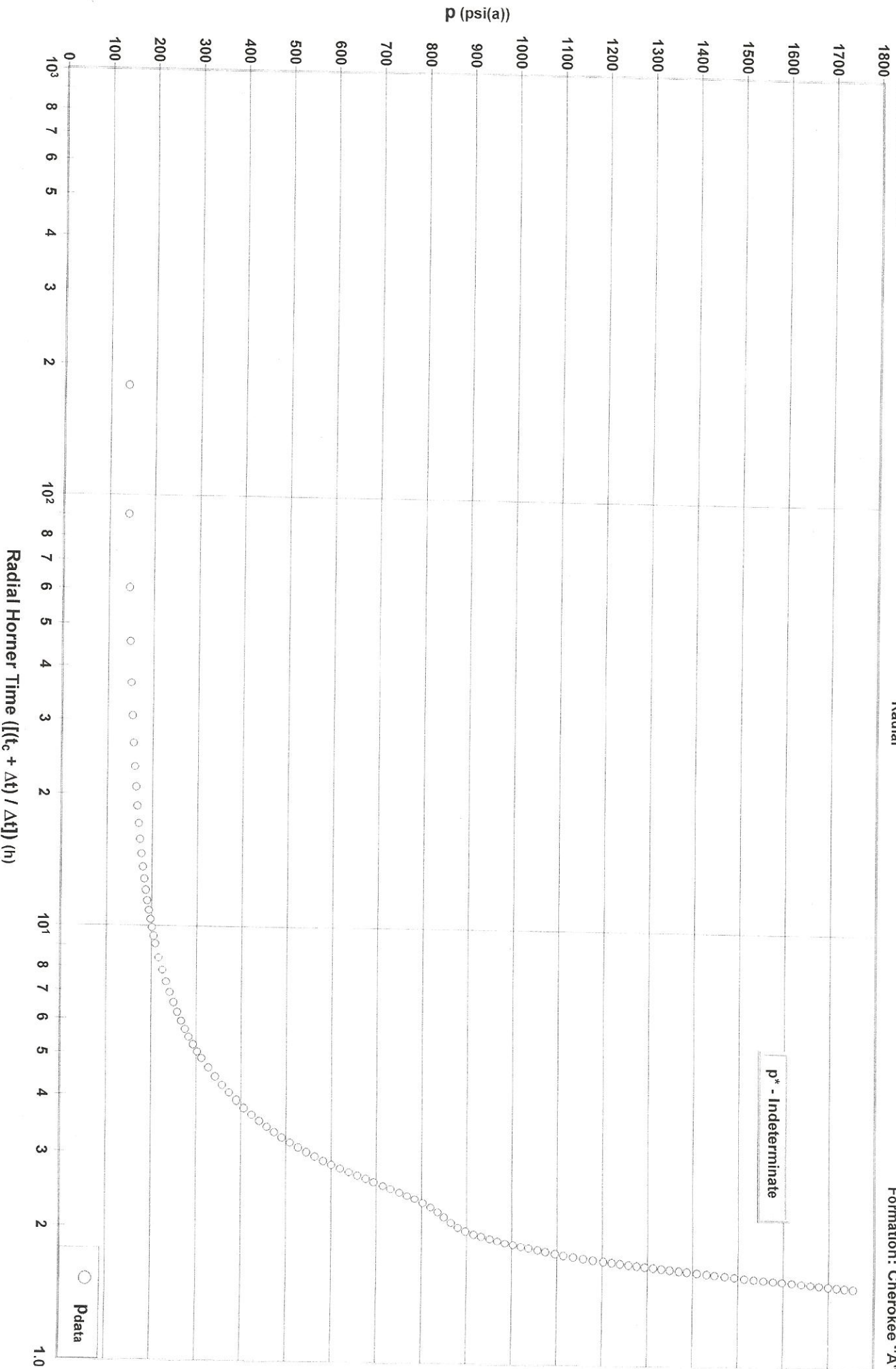


Wiepking - Fullerton Energy LLC
Interval: 7058' - 7094'

Diagnostic Plot - Shut In 1

Radial

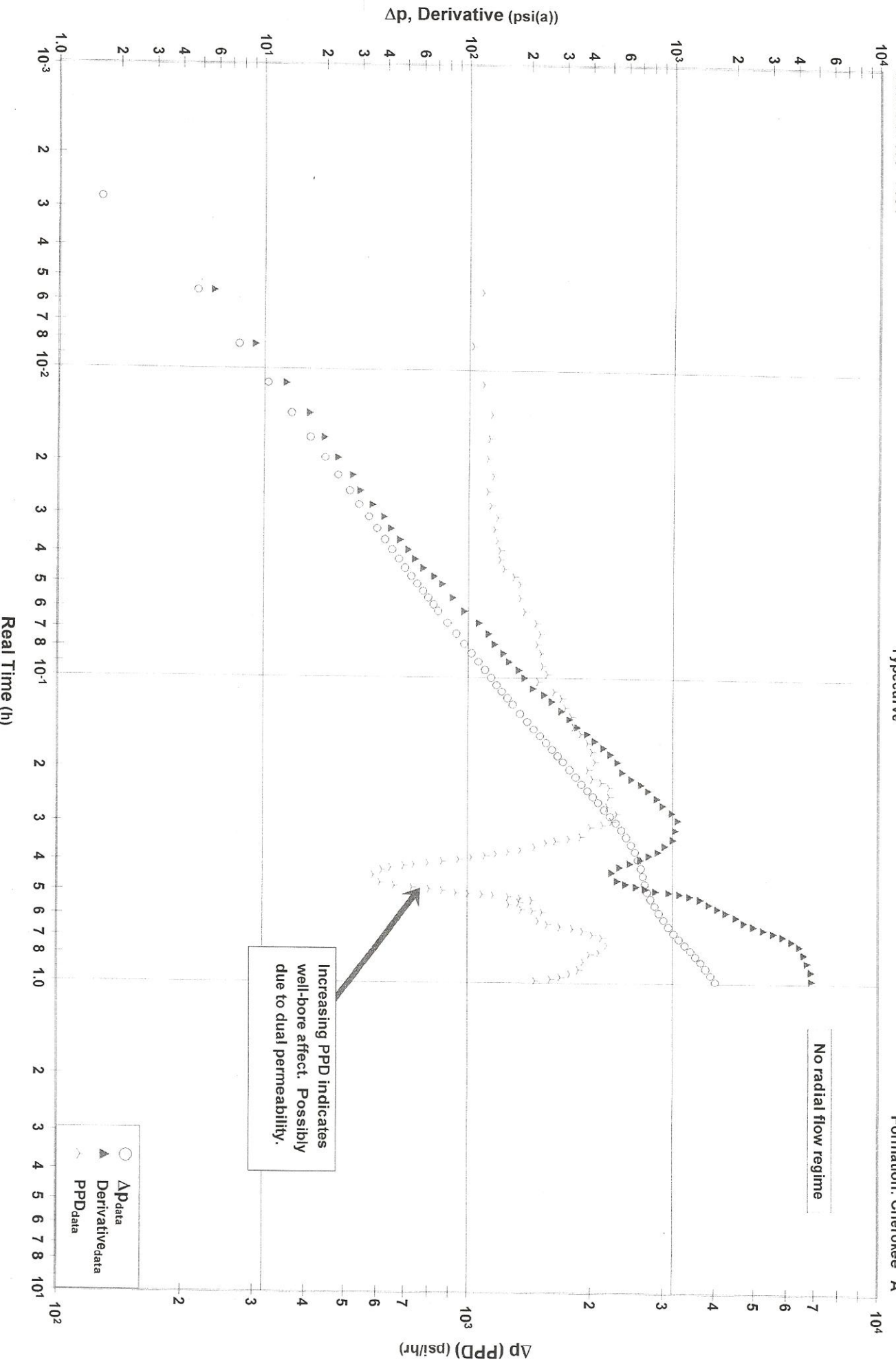
Bubba State 3, Dst 4
Formation: Cherokee "A"



Wiepking - Fullerton Energy LLC
Interval: 7058' - 7094'

Diagnostic Plot - Shut In 1 Typecurve

Bubba State 3, Dst 4
Formation: Cherokee "A"

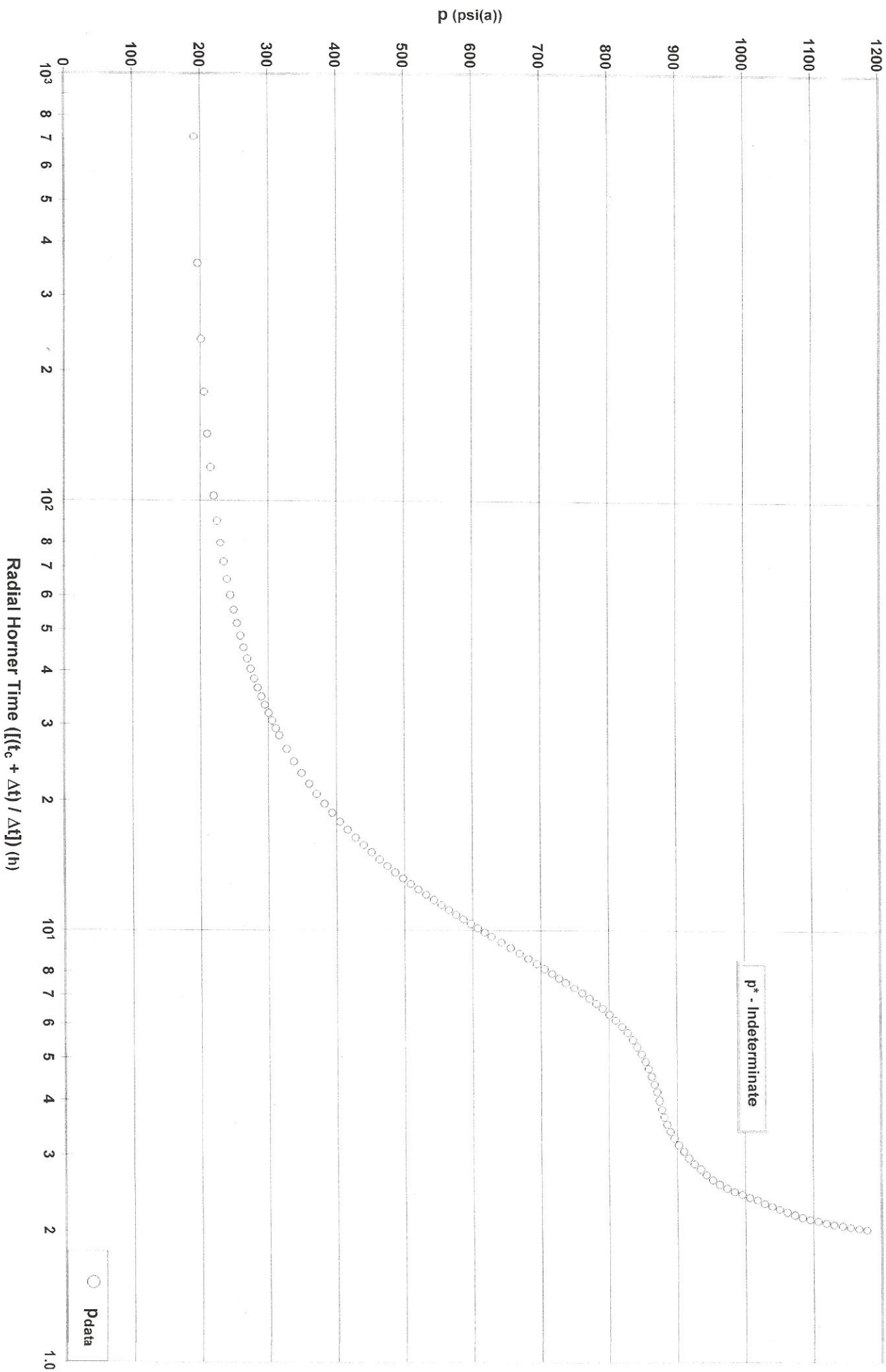


Wiepking - Fullerton Energy LLC
Interval: 7058' - 7094'

Diagnostic Plot - Shut In 2

Radial

Bubba State 3, Dst 4
Formation: Cherokee "A"



Wiepking - Fullerton Energy LLC
Interval: 7058' - 7094'

Diagnostic Plot - Shut In 2

Typecurve

Bubba State 3, Dst 4
Formation: Cherokee "A"

