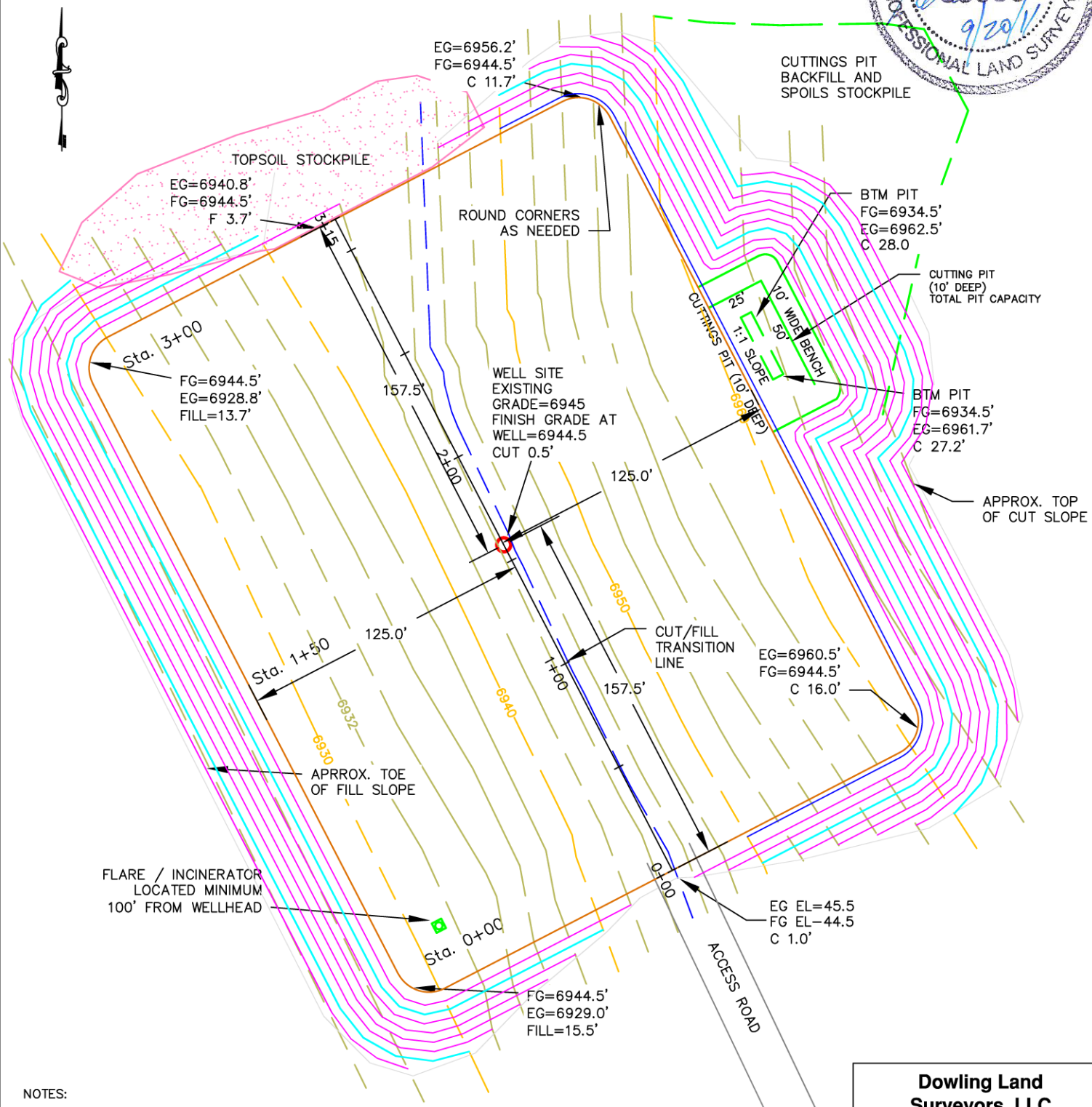


PRITLAW PARTNERS, LTD. 24-33
CONSTRUCTION LAYOUT FOR
WOLF MOUNTAIN RANCH
SW ¼ SECTION 33, T7N, R87W, 6TH P.M.
ROUTT COUNTY, COLORADO



NOTES:

1) WELL LOCATED IN THE SW ¼ OF SECTION 33, TOWNSHIP 7 NORTH, RANGE 87 WEST, 6TH P.M., ROUTT COUNTY, COLORADO. 648.7 FNL AND 654.1 FWL.

Dowling Land Surveyors, LLC

P.O. Box 954
 Hayden, Colorado 81639
 (970)-276-3613
 dowling@plotz.biz

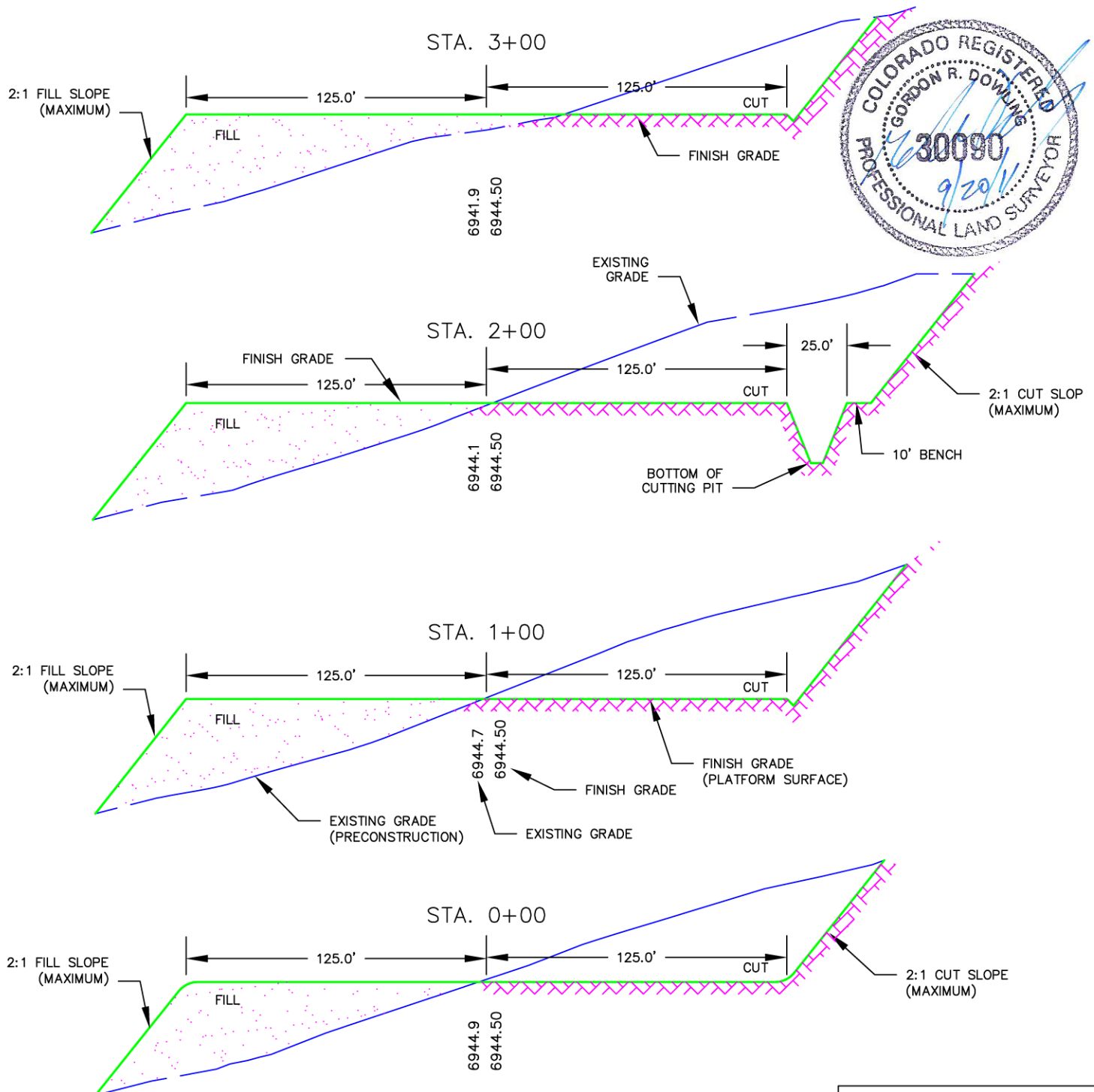
Horizontal Scale
 1" = 60'

FIGURE 1

DATE: 9-20-2011
 JOB NO. 1208-001

PRITLAW PARTNERS, LTD. 24-33
CONSTRUCTION LAYOUT CROSS SECTIONS
WOLF MOUNTAIN RANCH
SW ¼ SECTION 33, T7N, R87W, 6TH P.M.
ROUTT COUNTY, COLORADO

APPROXIMATE ACREAGE
WELL SITE DISTURBANCE = ±3.16 ACRES
ACCESS ROAD DISTURBANCE = ±0.12 ACRES
TOTAL ±3.30 ACRES



NOTES:

- 1) WELL LOCATED IN THE SW ¼ OF SECTION 33, TOWNSHIP 7 NORTH, RANGE 87 WEST, 6TH P.M., ROUTT COUNTY, COLORADO. 648.7 FNL AND 654.1 FWL.
- 2) TOPSOIL NOT TO BE STRIPPED BELOW FINISHED GRADE OF WELL PAD SUBSTRUCTURE.
- 3) 6" TOPSOIL STRIPPING = 2,550 CY, CUT = 15,944 CY, FILL = 14,575 CY
- 4) EXCESS MATERIAL 1,369 CY OF CUT MATERIAL (AFTER INTERIM RECLAMATION)

**Dowling Land
Surveyors, LLC**

P.O. Box 954
Hayden, Colorado 81639
(970)-276-3613
dowling@plotz.biz

Horizontal Scale
1" = 60'

FIGURE 2

DATE: 9-20-2011
JOB NO. 1208-001