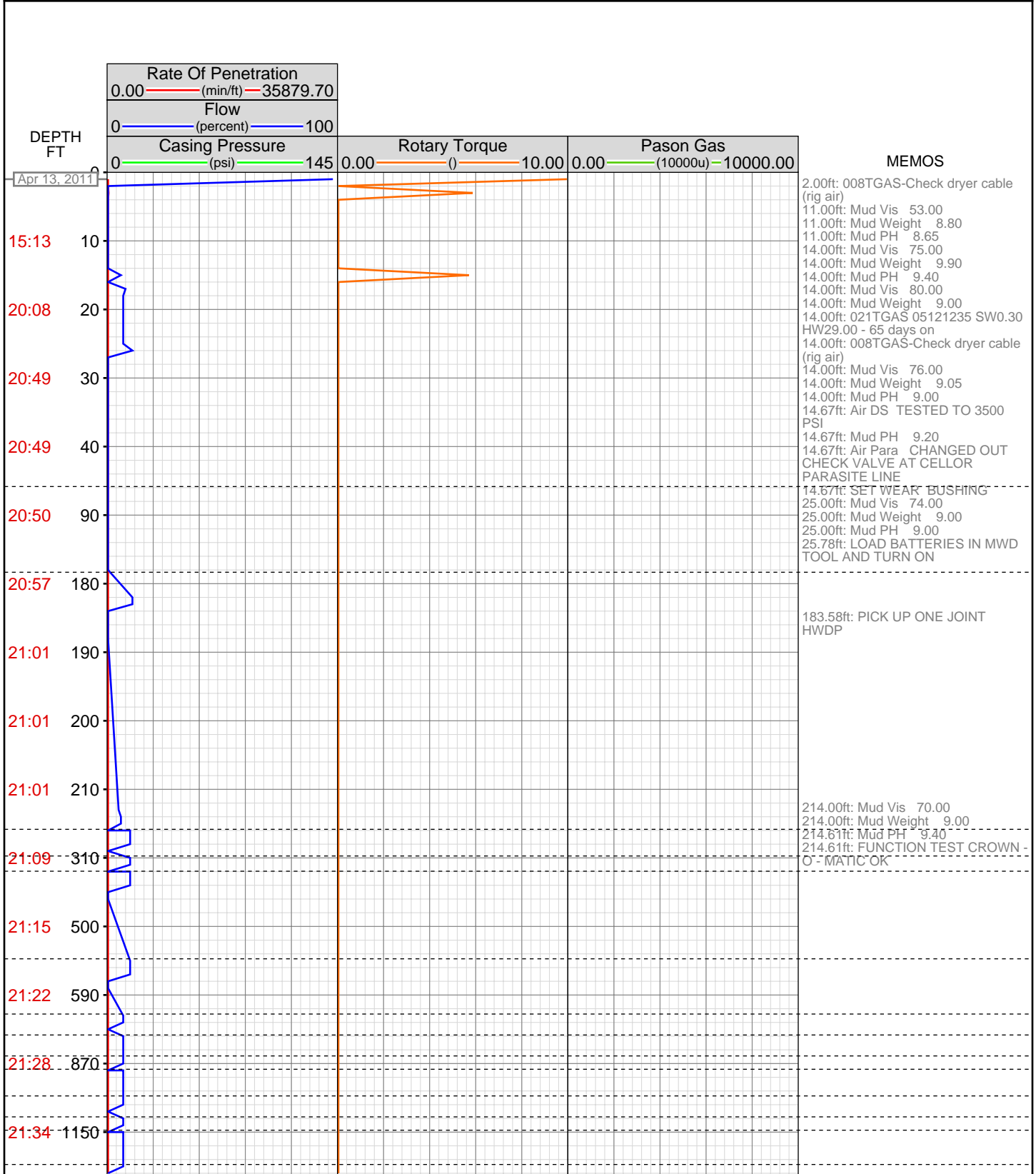


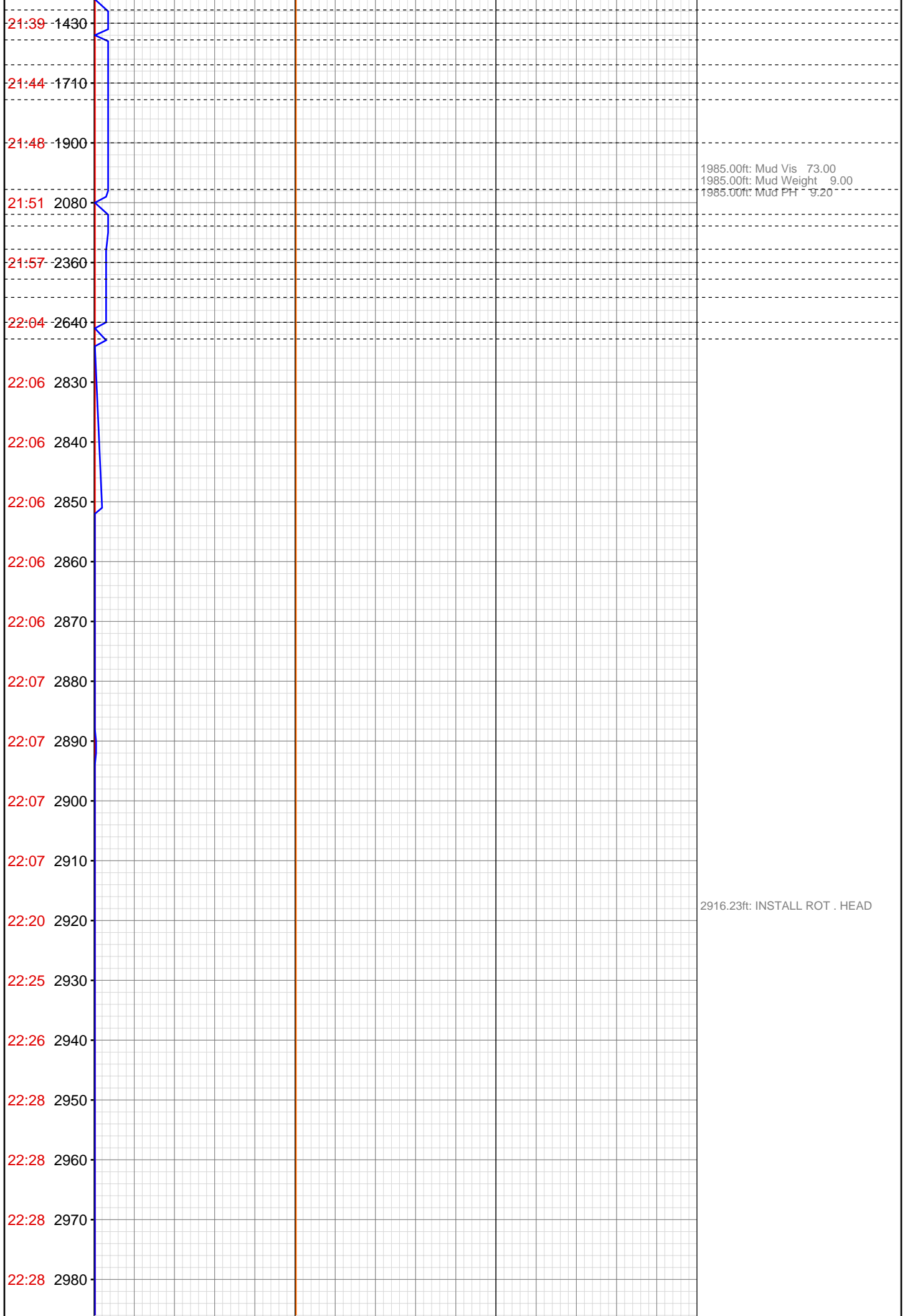
DataHub EDR Log

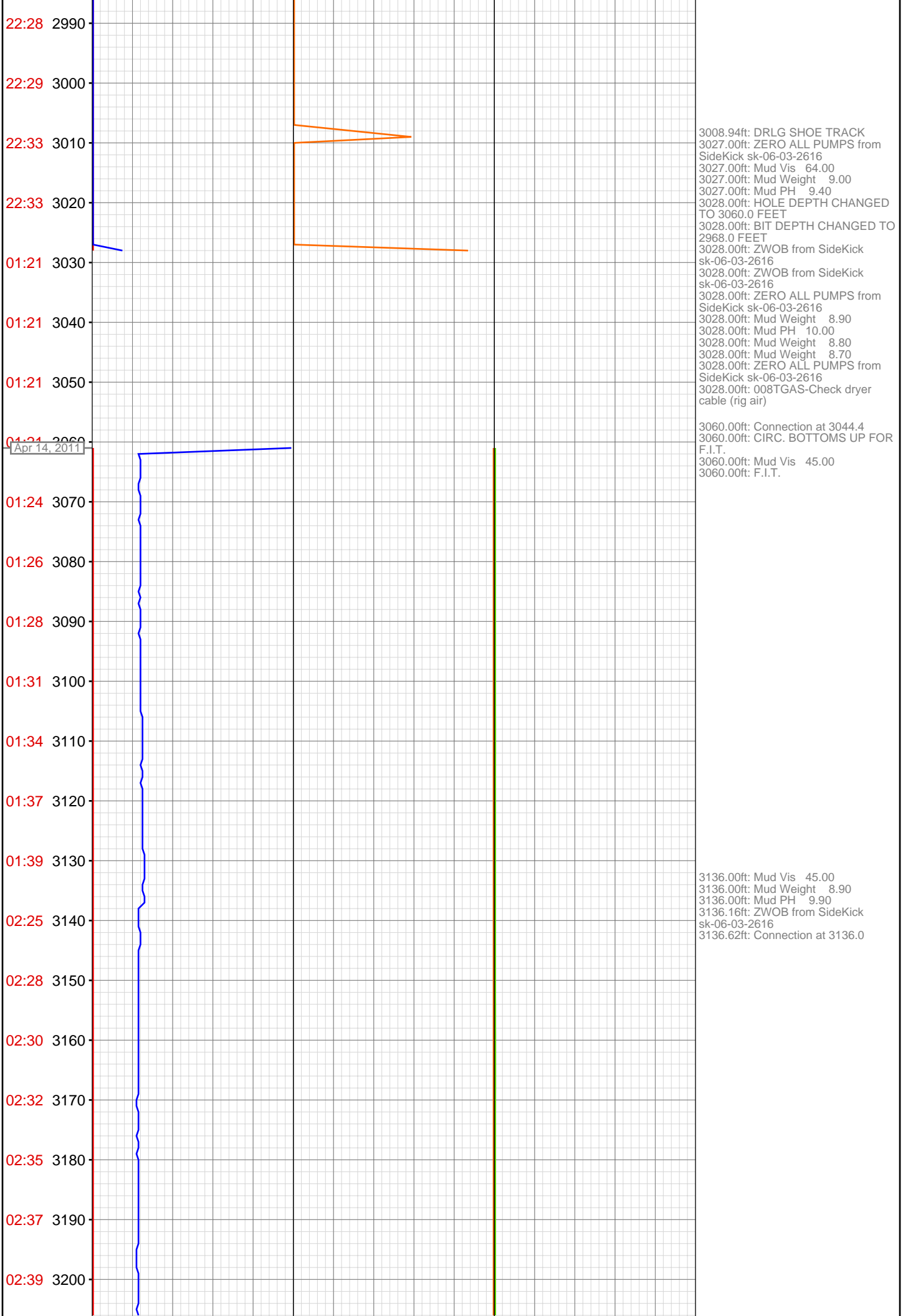
Thu Apr 21, 2011 07:32:24
Well Dossier 1302463043
Marilyn Tucker

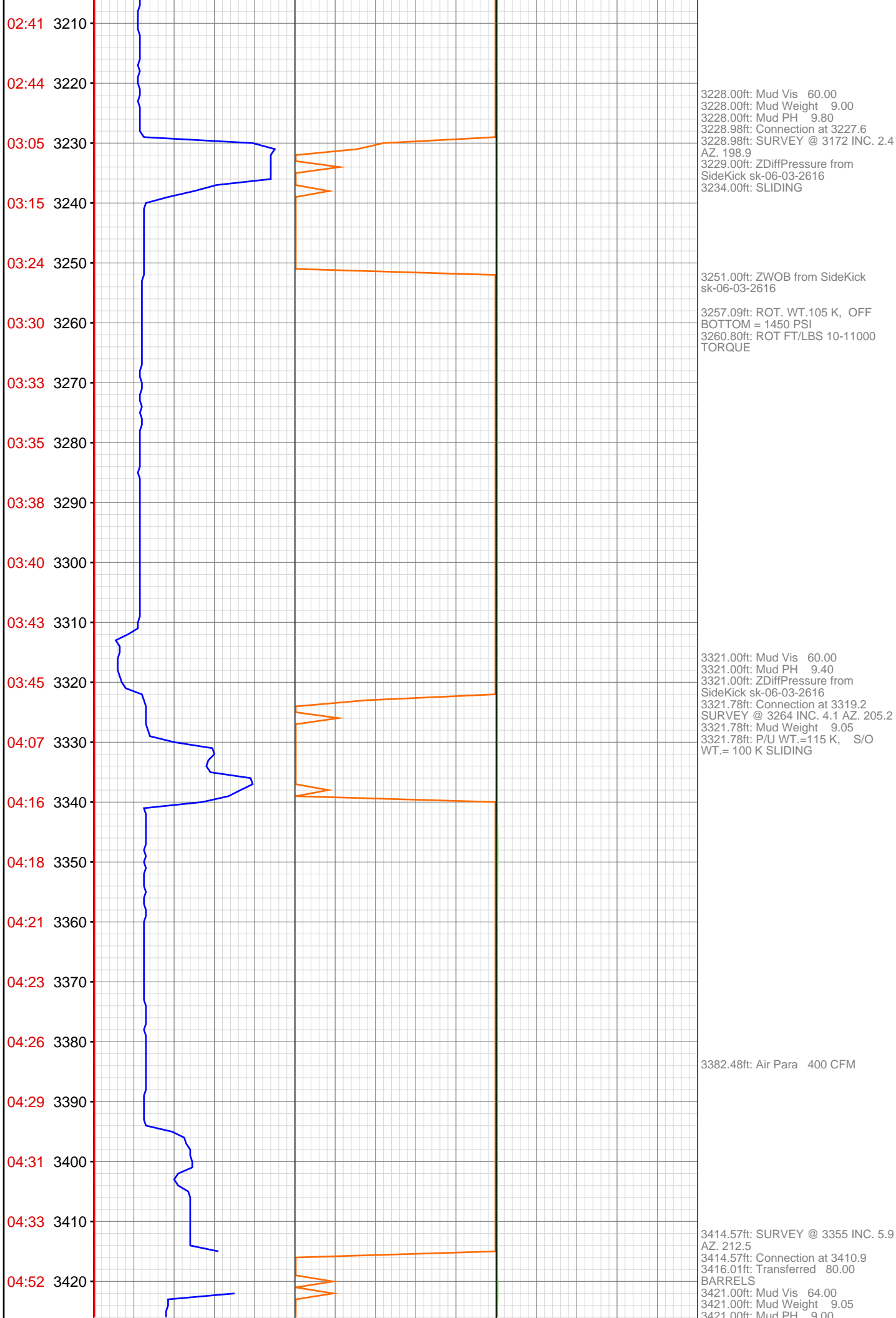
OPERATOR: EnCana Oil & Gas (USA), Inc.
WELL: SGU 8502D-36 B36 496
FIELD:
LOCATION: SEC. 36 T4S R96W
COUNTRY: USA
RIG: Pat-UTI 308

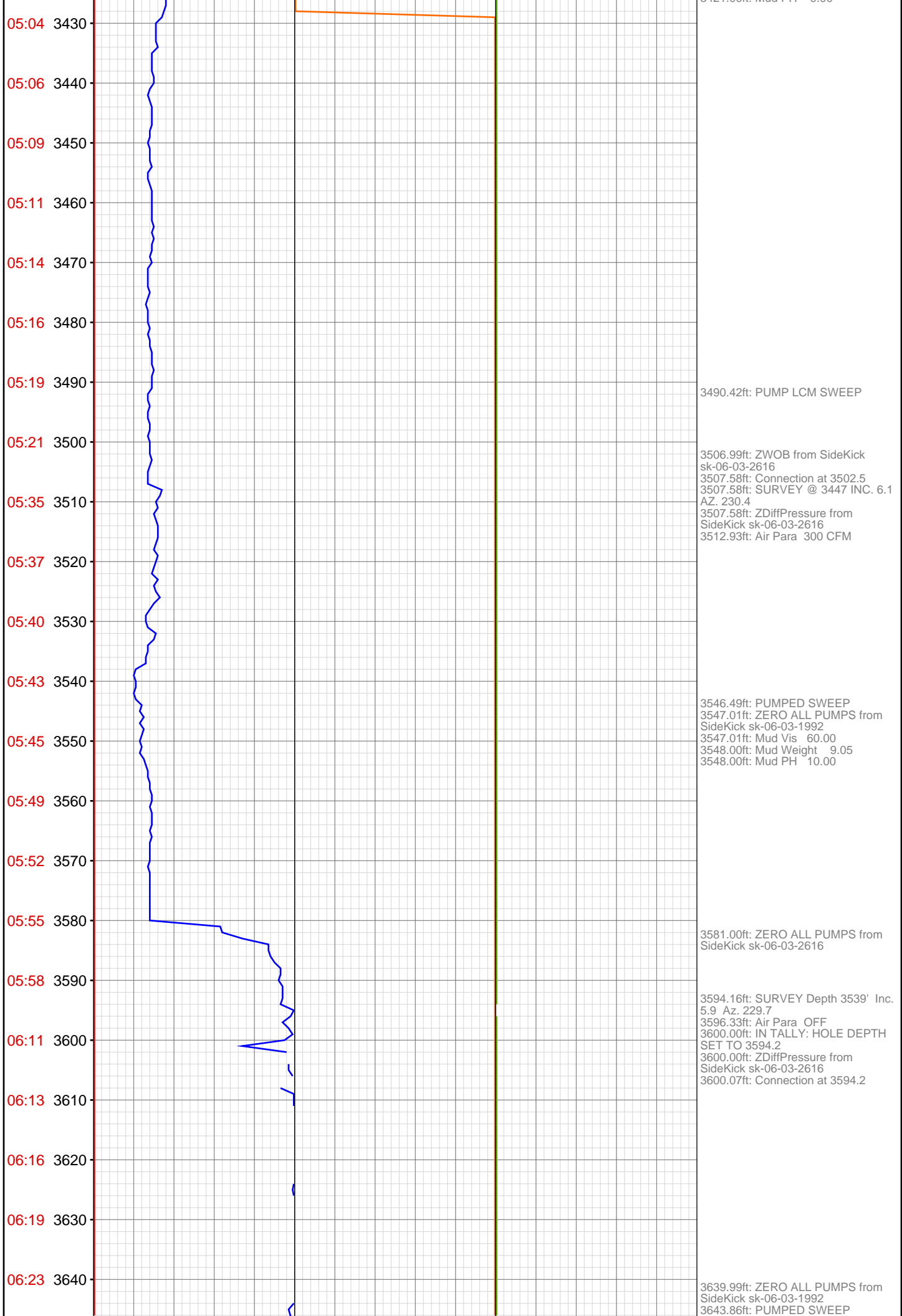
CONTRACTOR: Patterson-UTI Drilling Company
UNIQUE WELL ID: 050451982300
SPUD DATE: Apr 13, 2011 01:00
RELEASE DATE: Apr 21, 2011 06:00

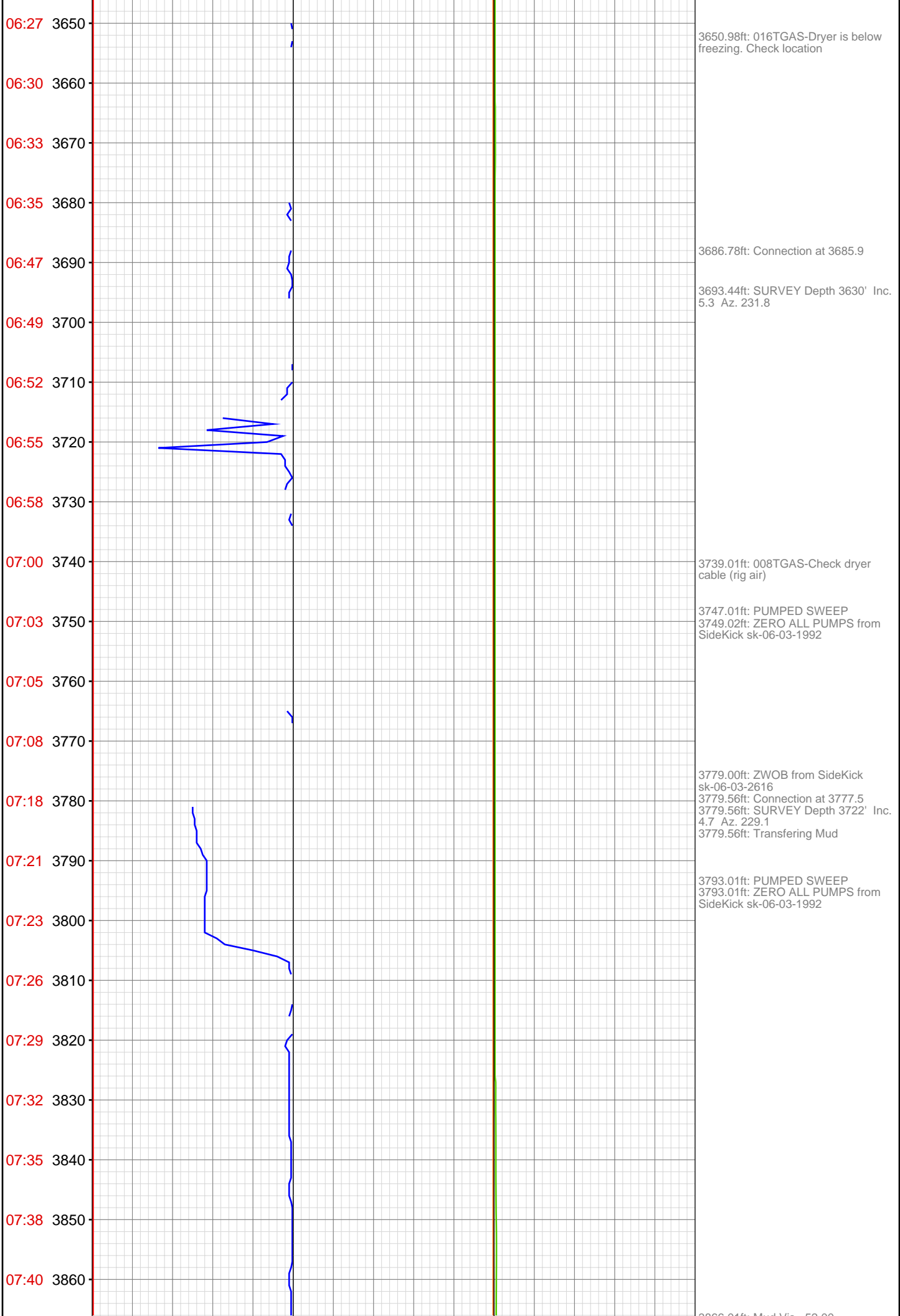


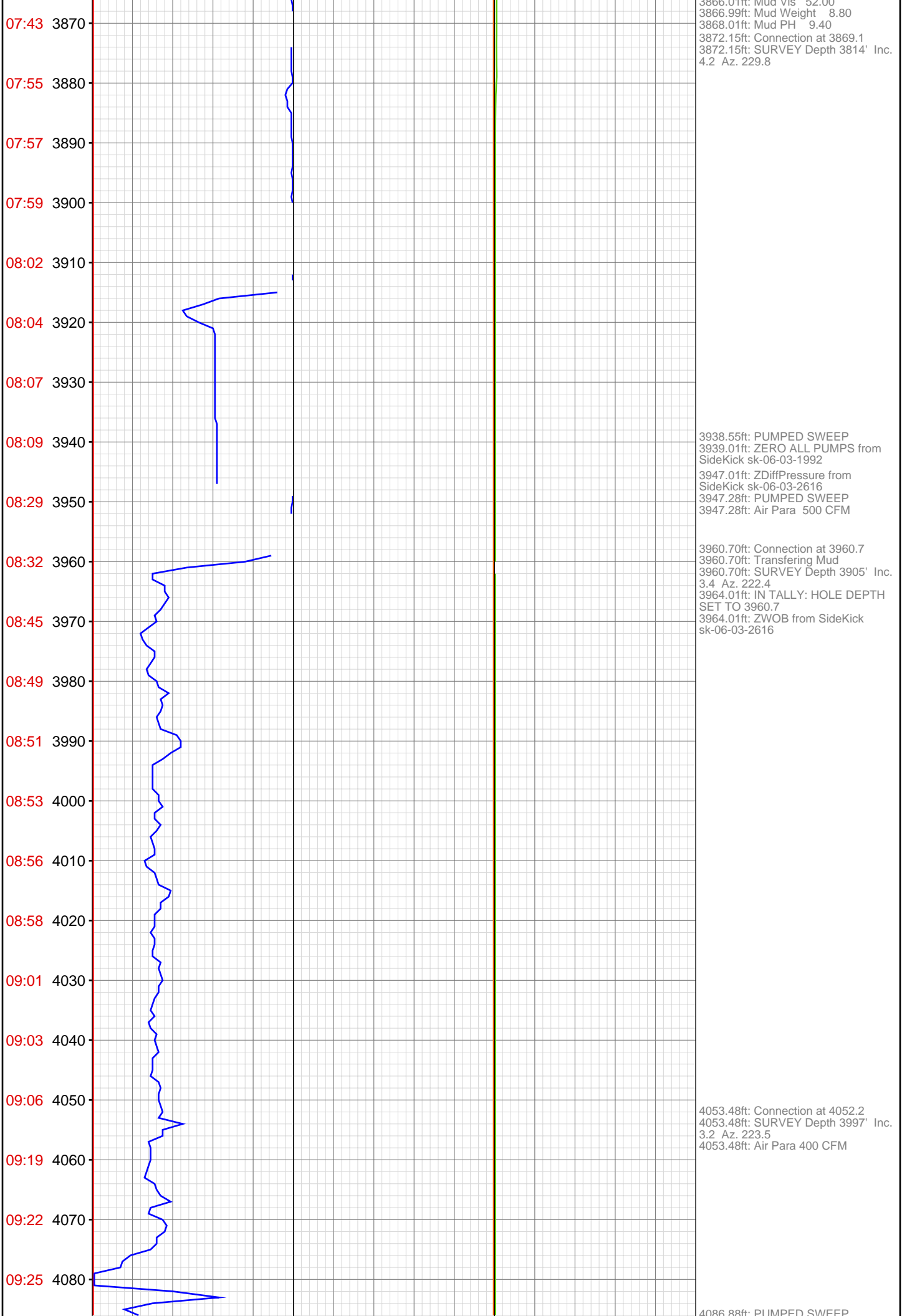


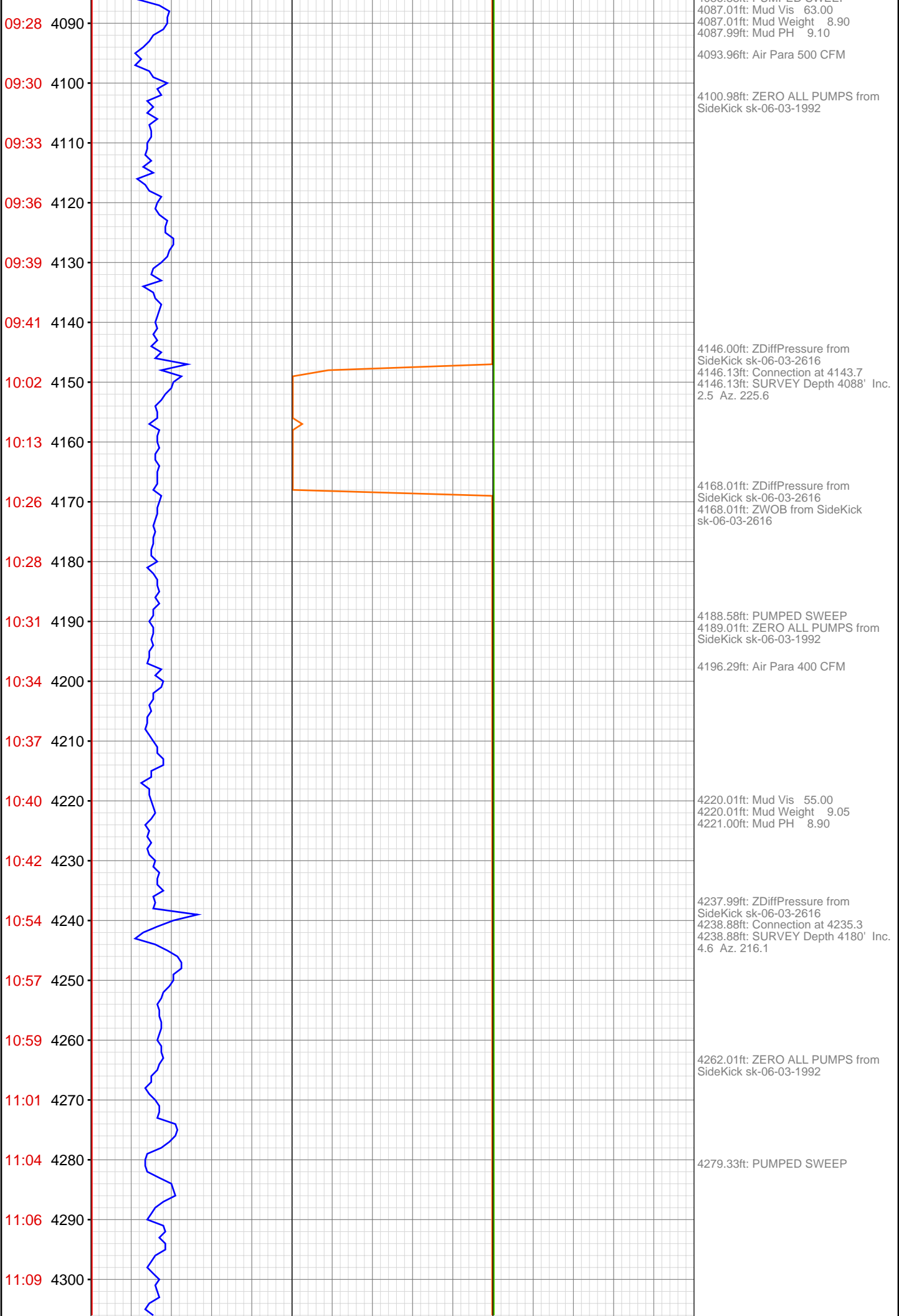


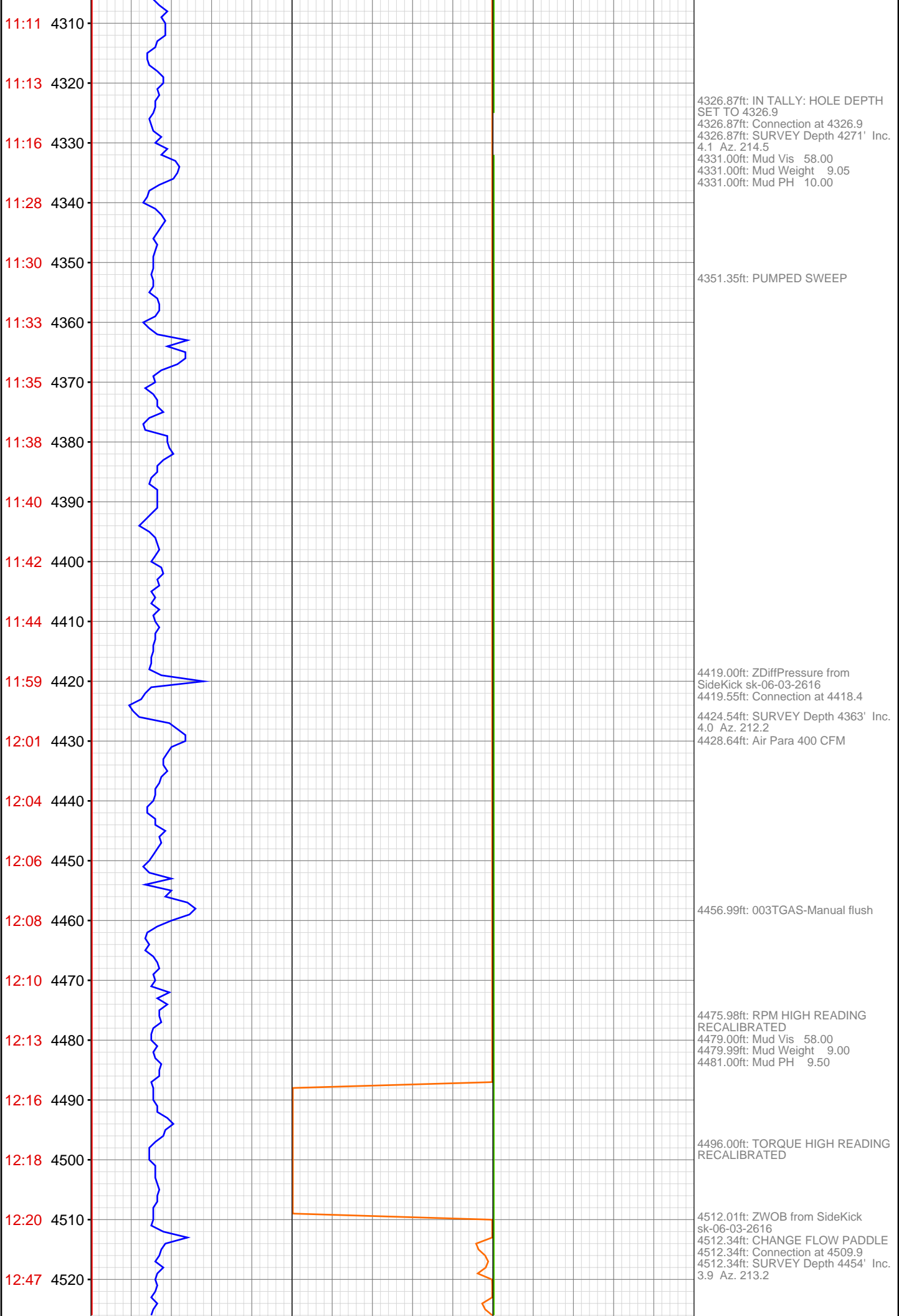


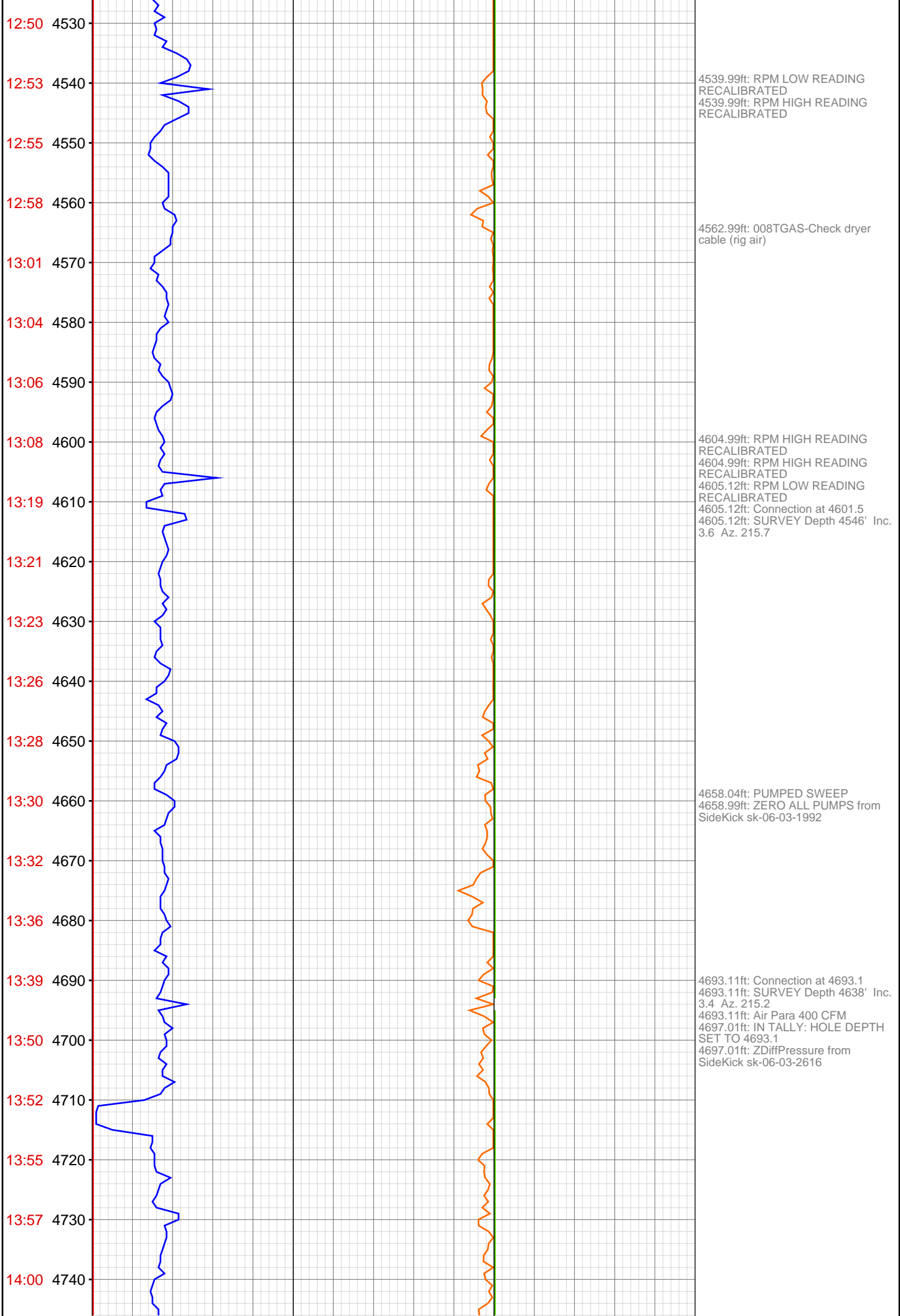


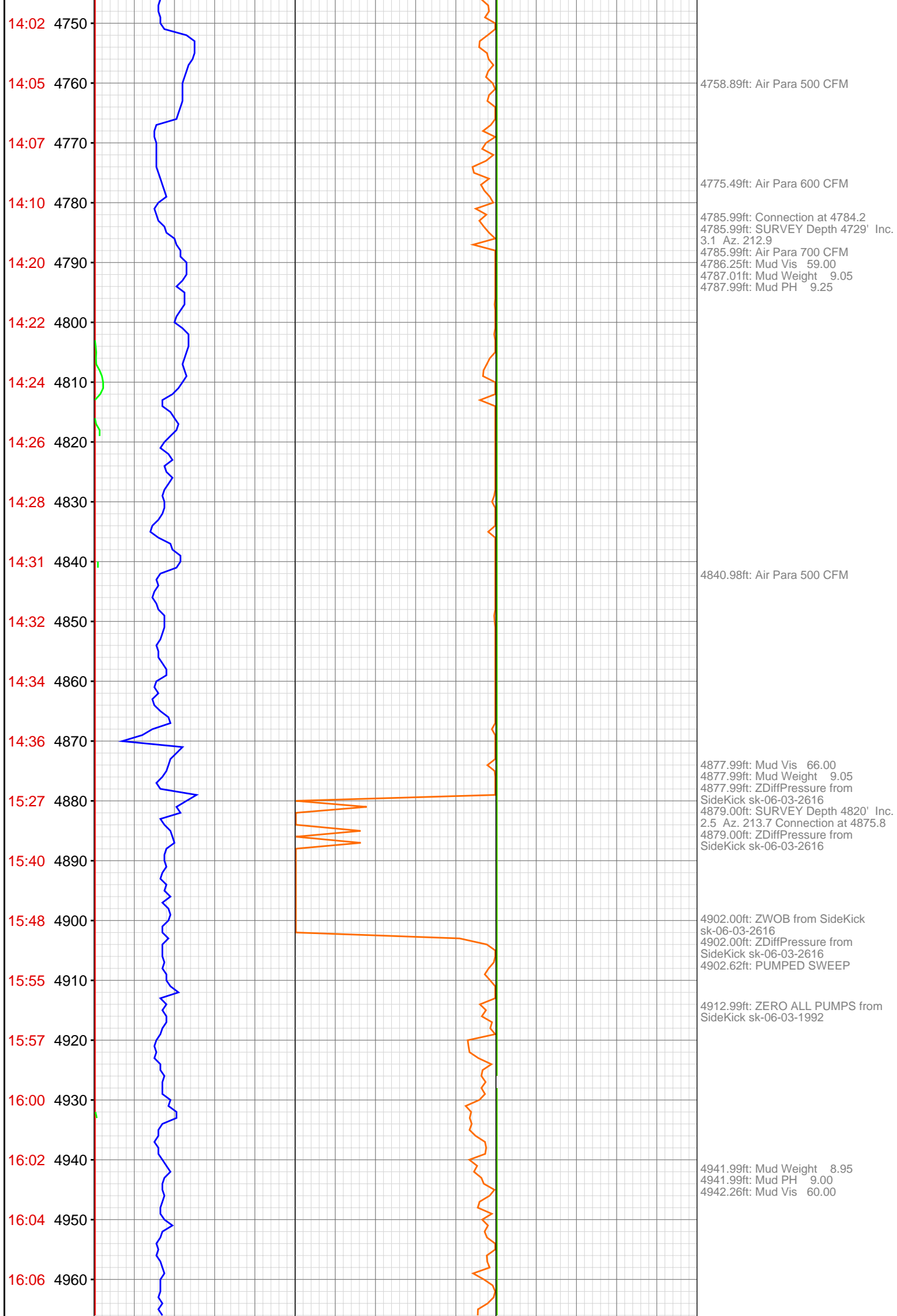


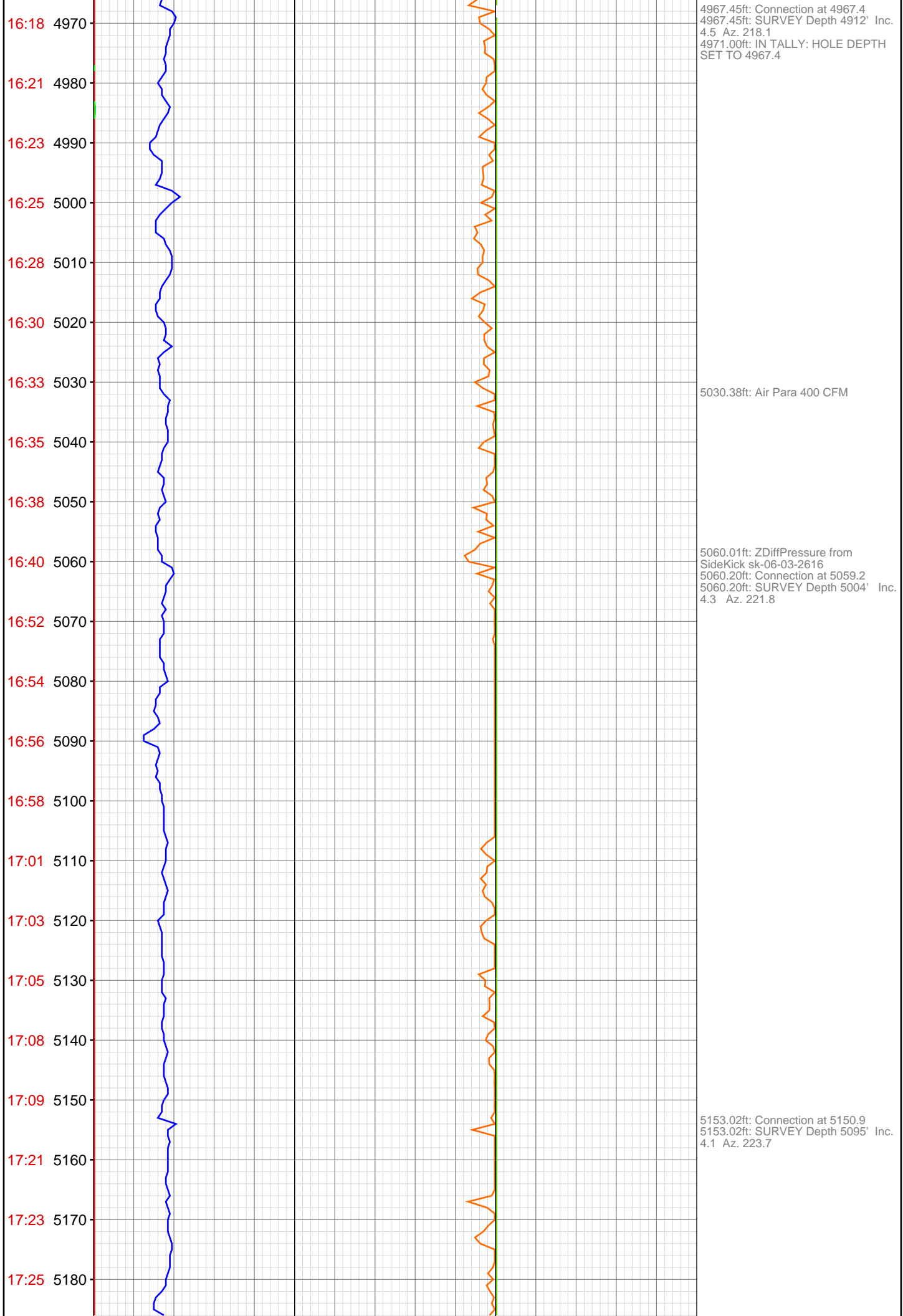


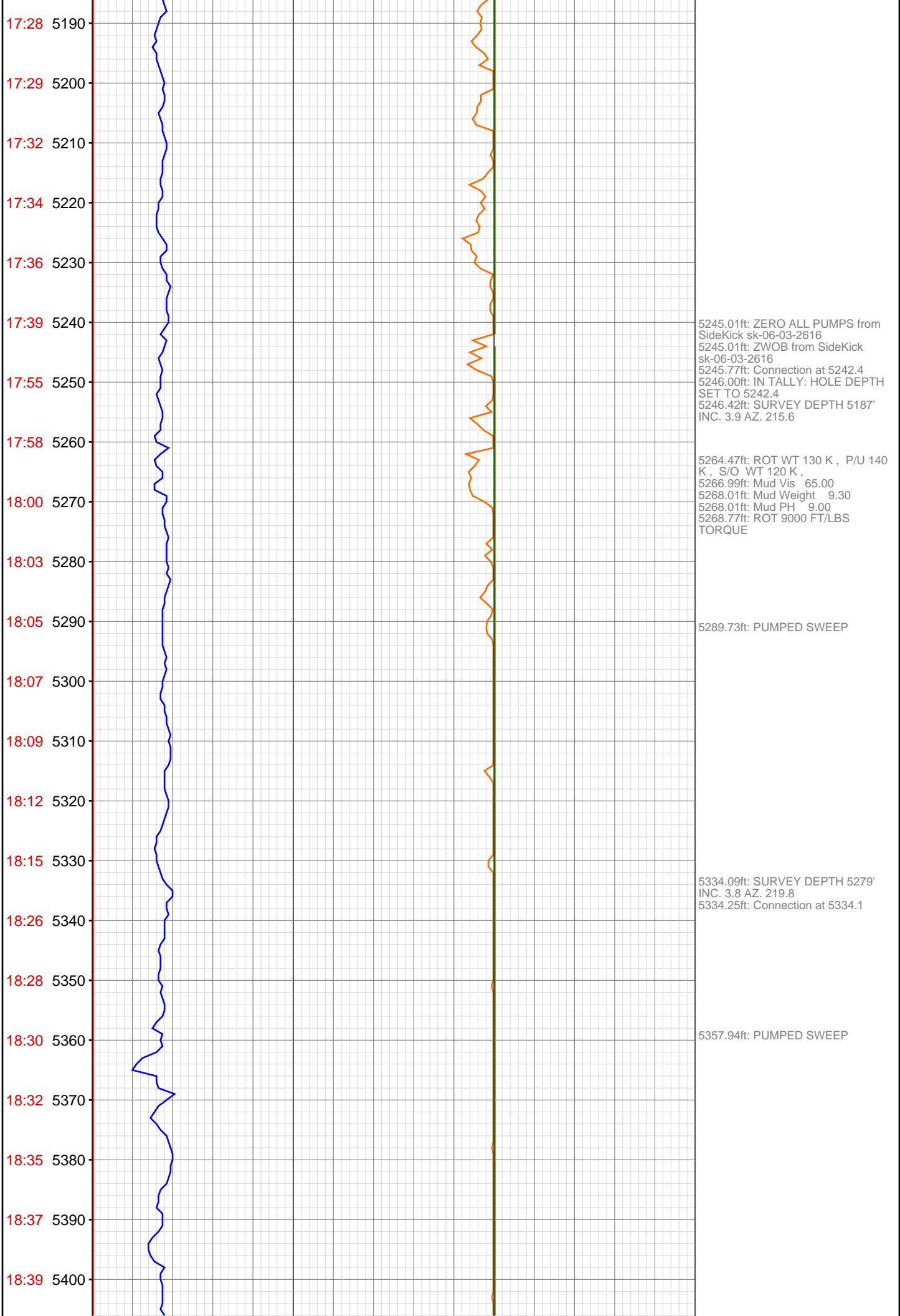




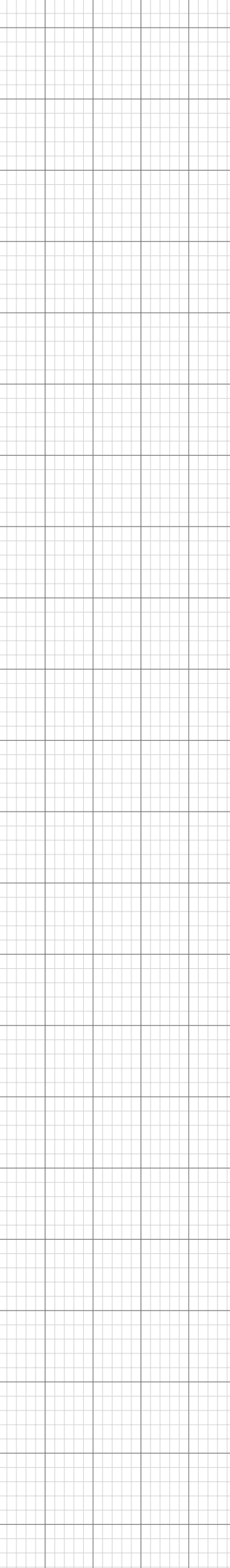
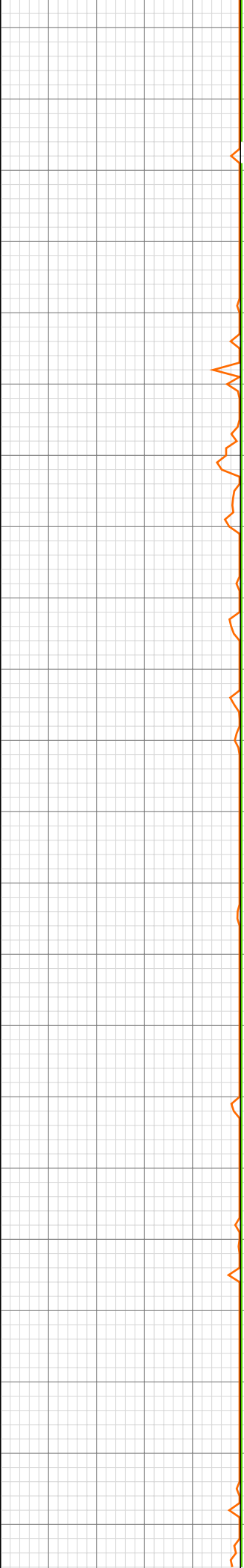
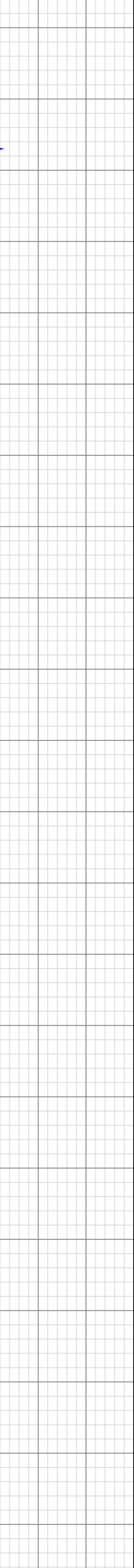
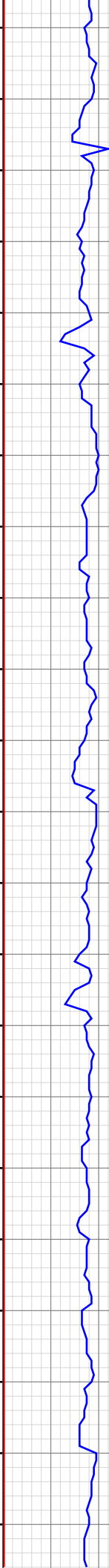








18:41 5410
18:43 5420
18:56 5430
18:58 5440
19:00 5450
19:03 5460
19:05 5470
19:07 5480
19:10 5490
19:12 5500
19:14 5510
19:26 5520
19:28 5530
19:30 5540
19:32 5550
19:35 5560
19:37 5570
19:39 5580
19:42 5590
19:44 5600
19:54 5610
19:58 5620



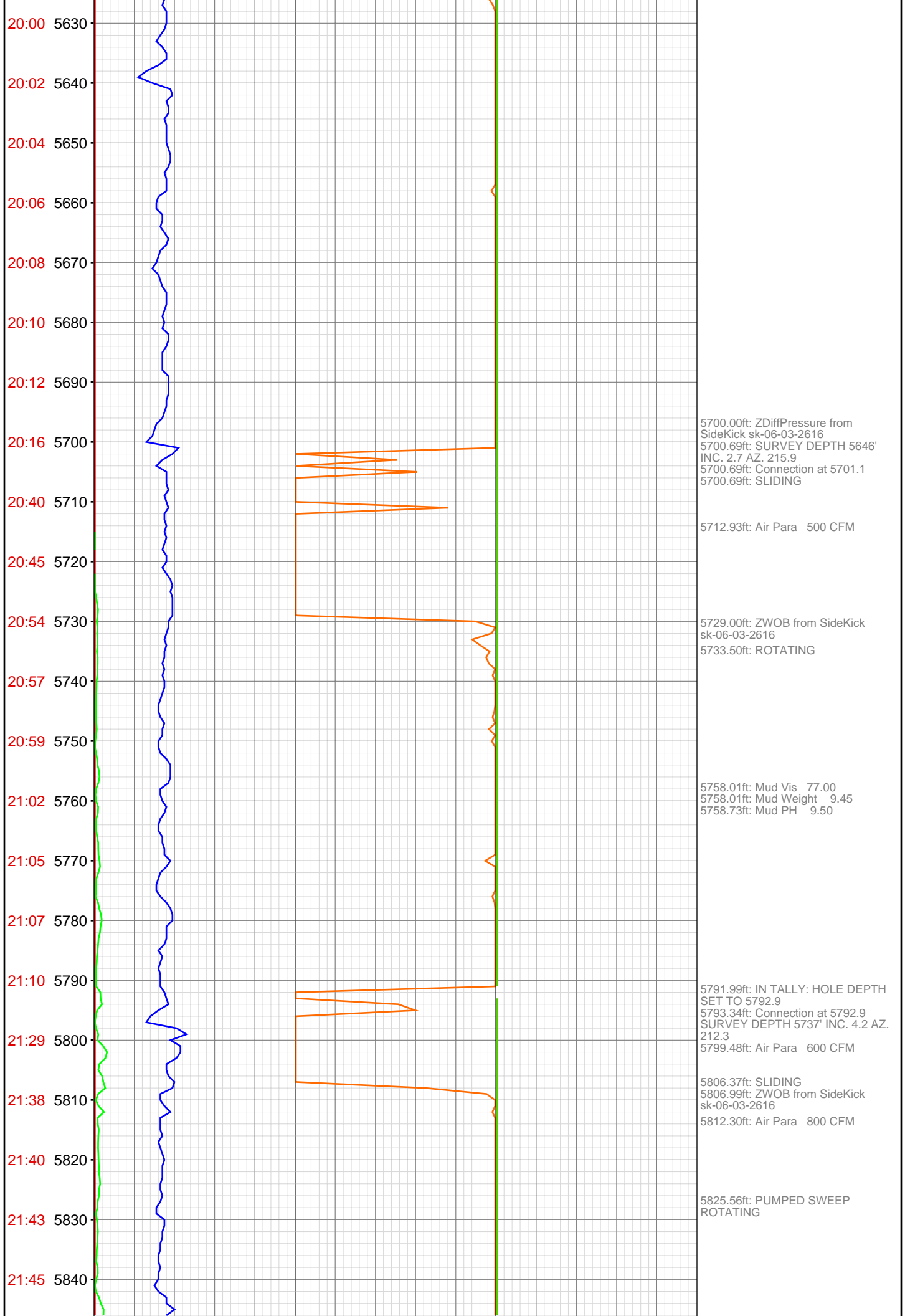
5425.98ft: ZWOB from SideKick
sk-06-03-2616
5426.67ft: SURVEY DEPTH 5370'
INC. 3.5 AZ. 222.0
5426.87ft: Connection at 5425.8
5427.99ft: IN TALLY: HOLE DEPTH
SET TO 5425.8
5435.99ft: Mud Vis 78.00
5437.01ft: Mud Weight 9.40
5437.01ft: Mud PH 9.00

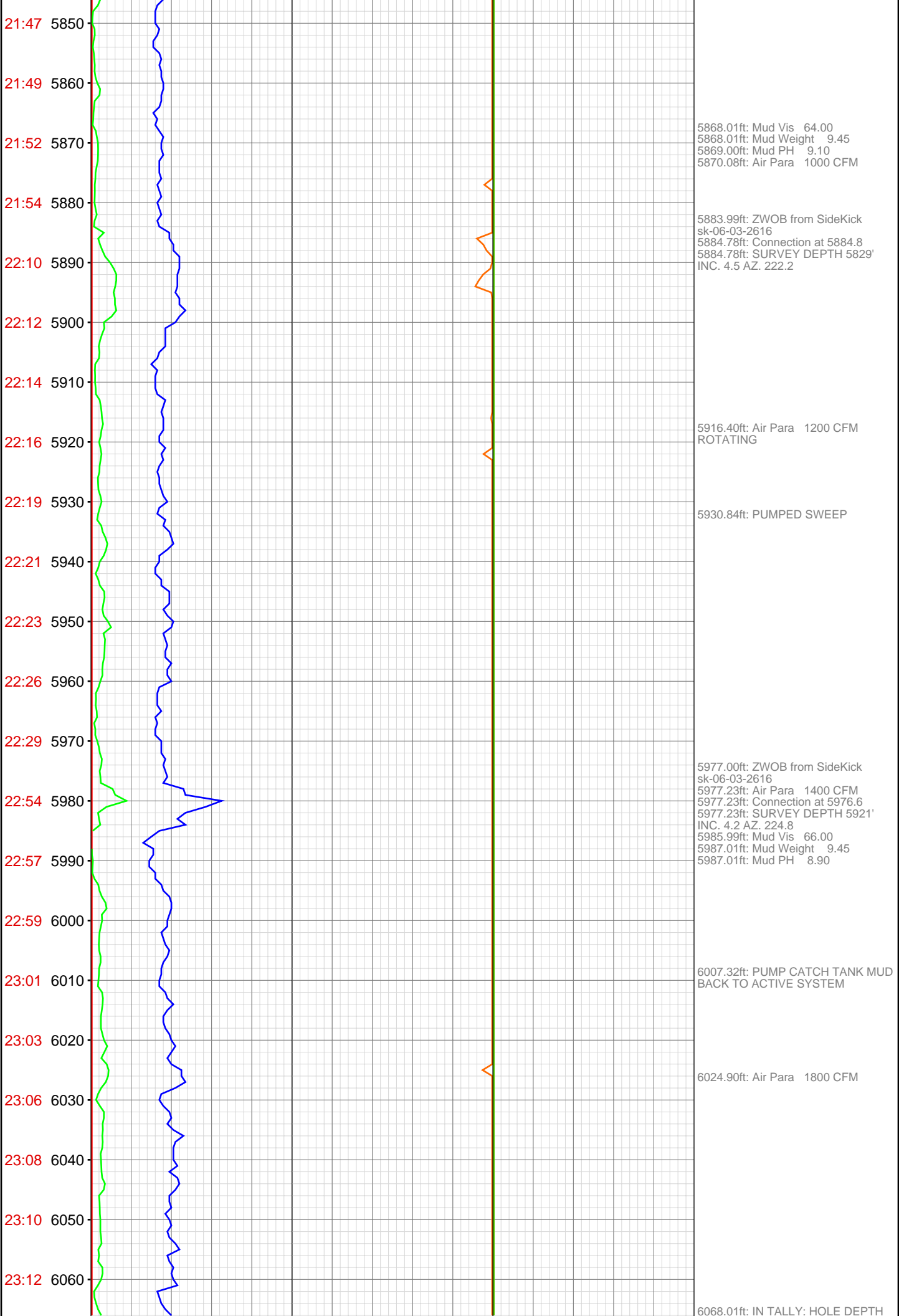
5447.01ft: 021TGAS 05121235
SW0.30 HW29.00 - 66 days on
5448.00ft: 008TGAS-Check dryer
cable (rig air)

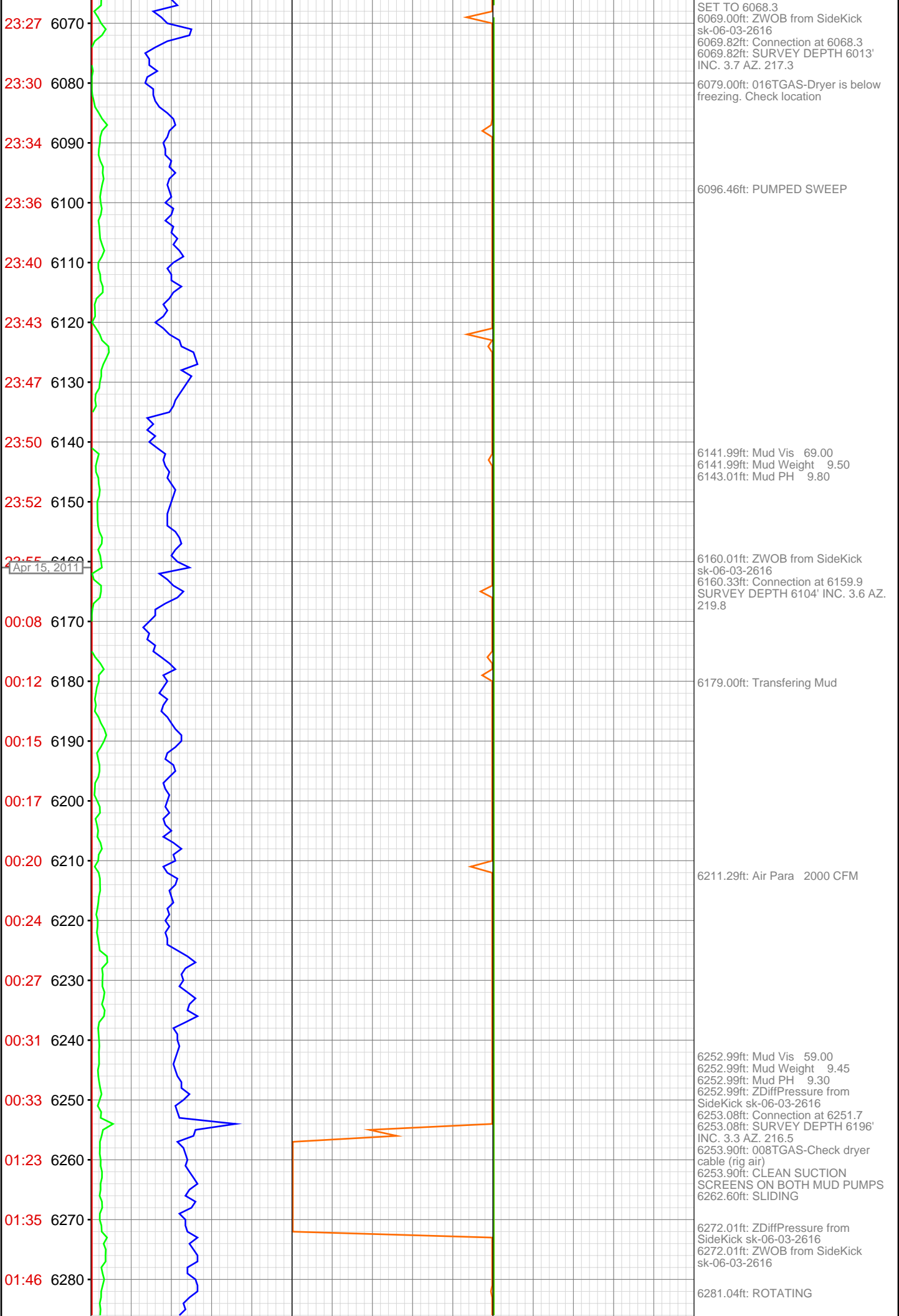
5469.36ft: PUMPED SWEEP

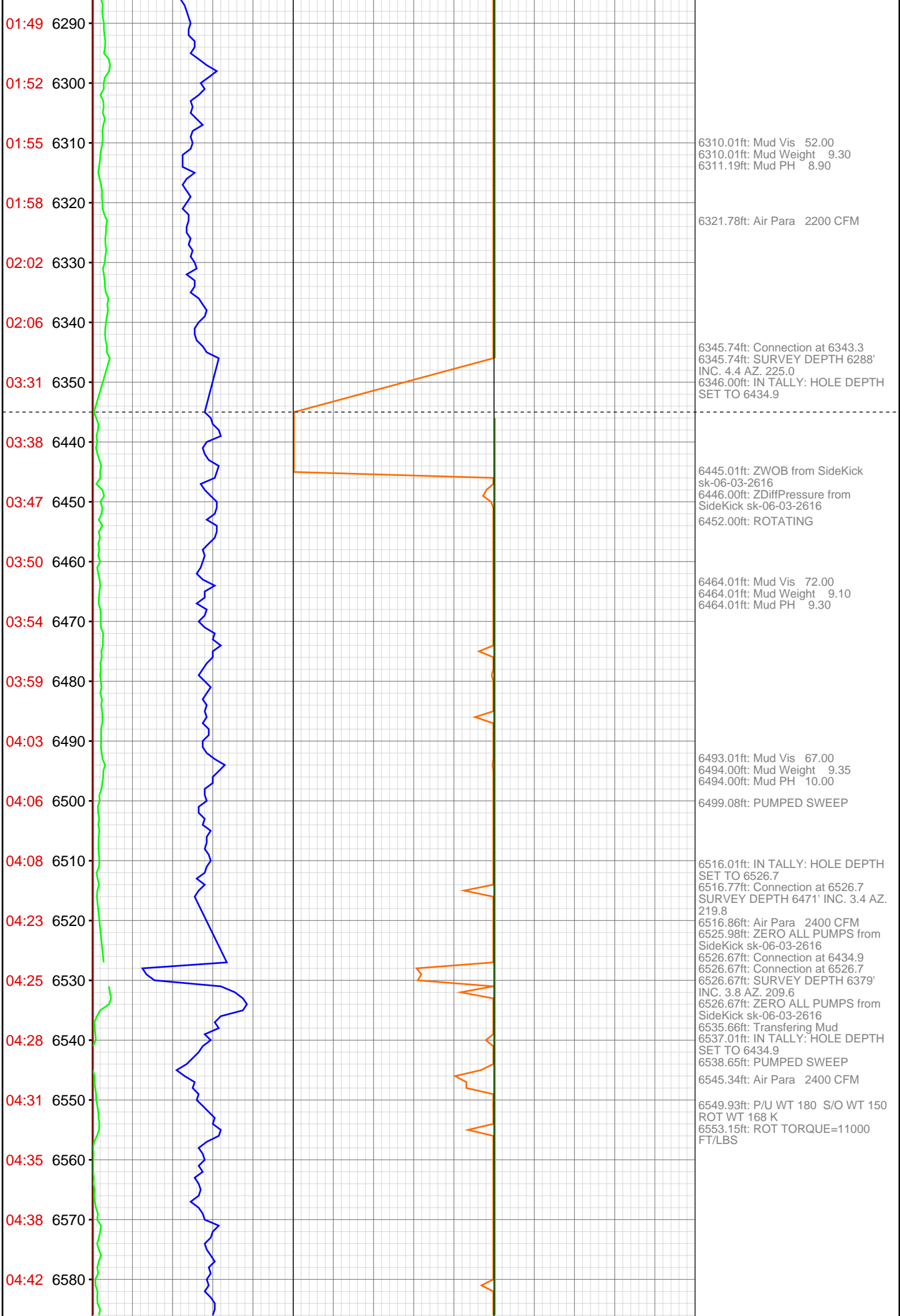
5516.01ft: ZWOB from SideKick
sk-06-03-2616
5516.93ft: SURVEY DEPTH 5462'
INC. 3.6 AZ. 217.4
5516.93ft: Connection at 5517.5

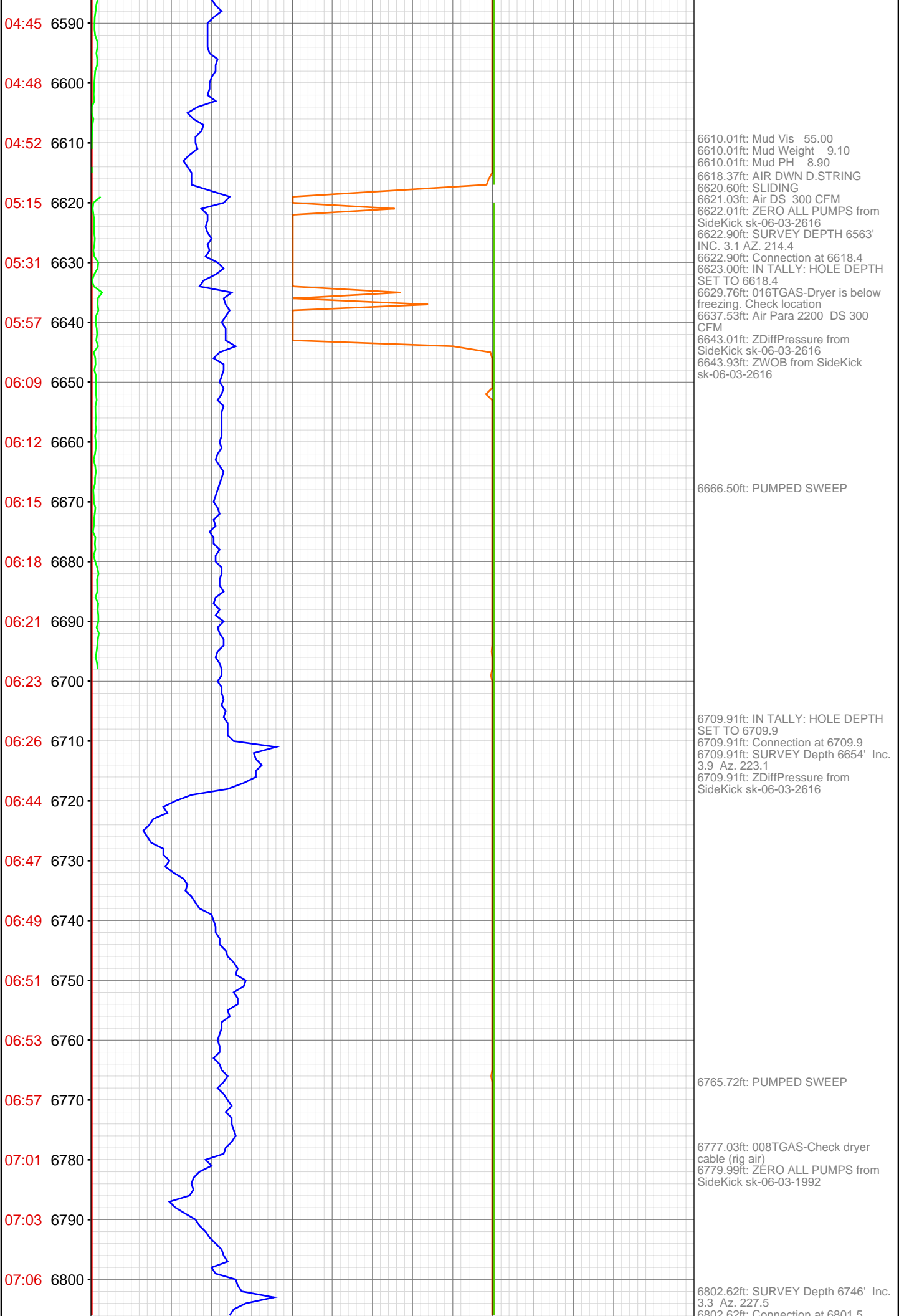
5598.92ft: PUMPED SWEEP
5608.99ft: Mud Vis 77.00
5608.99ft: Mud Weight 9.45
5608.99ft: Mud PH 8.90
5608.99ft: ZWOB from SideKick
sk-06-03-2616
5609.32ft: IN TALLY: HOLE DEPTH
SET TO 5609.3 SURVEY DEPTH
5554' INC. 3.0 AZ. 217.5
5609.68ft: Air Para 400 CFM
5609.68ft: Connection at 5609.3

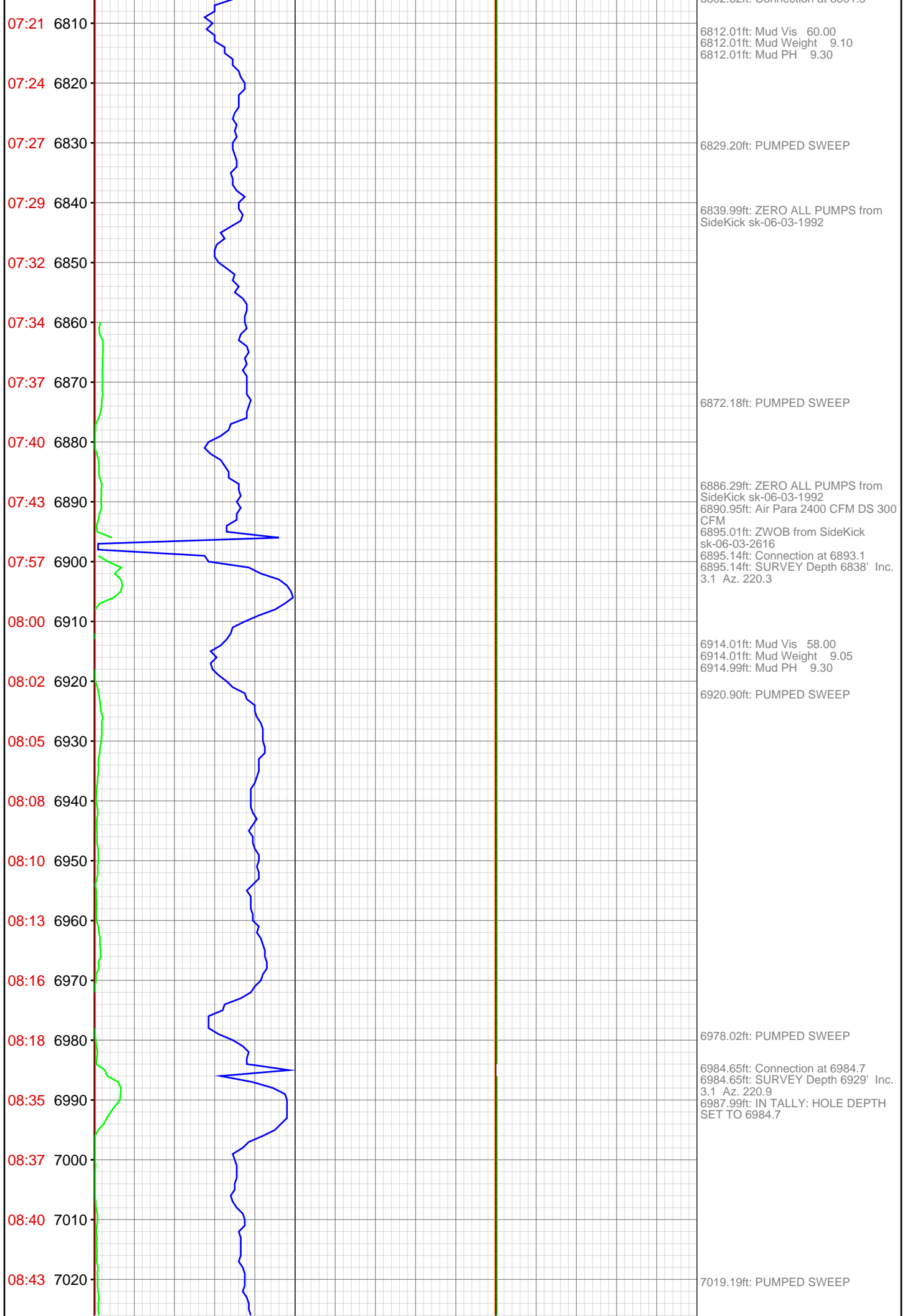


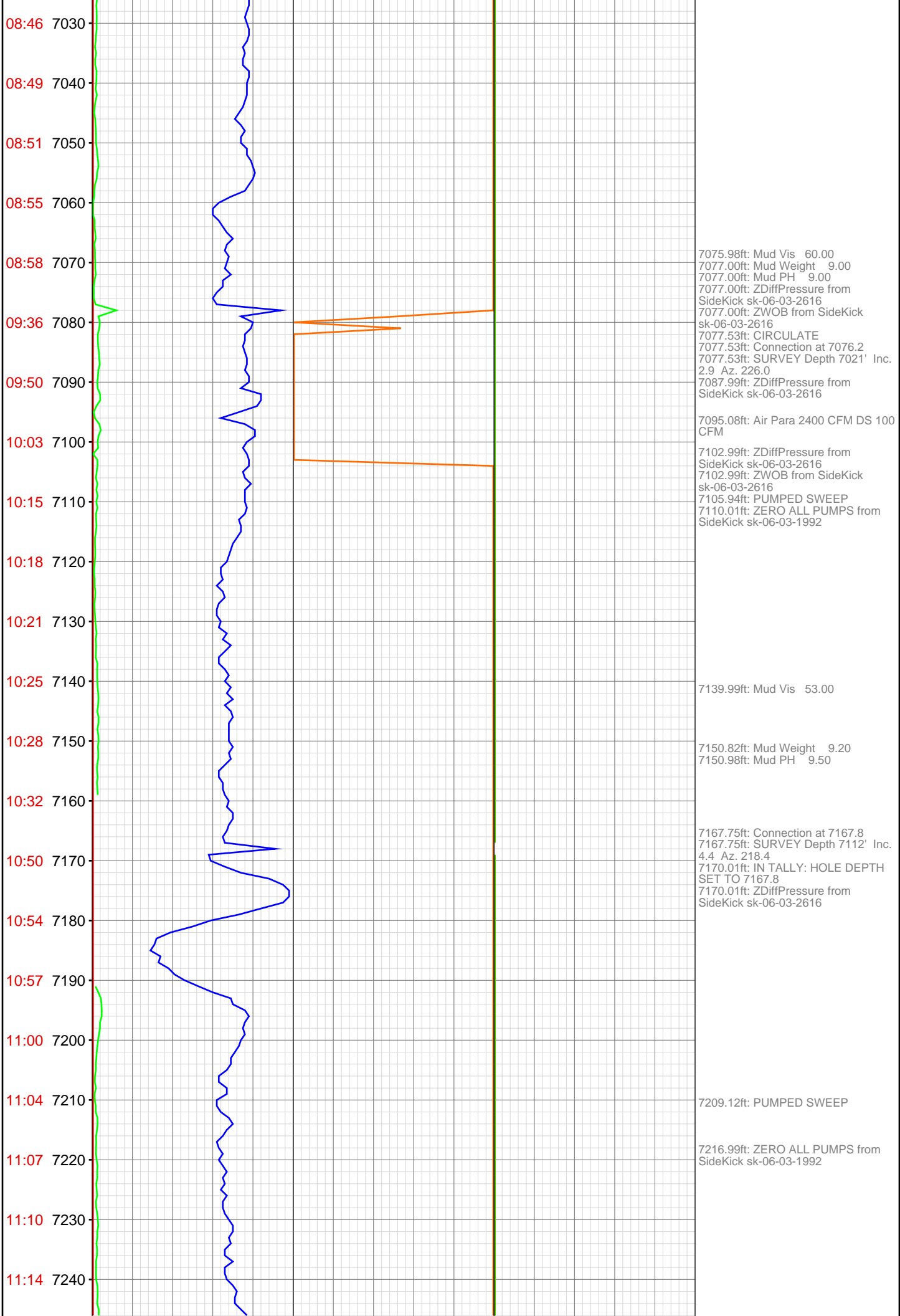


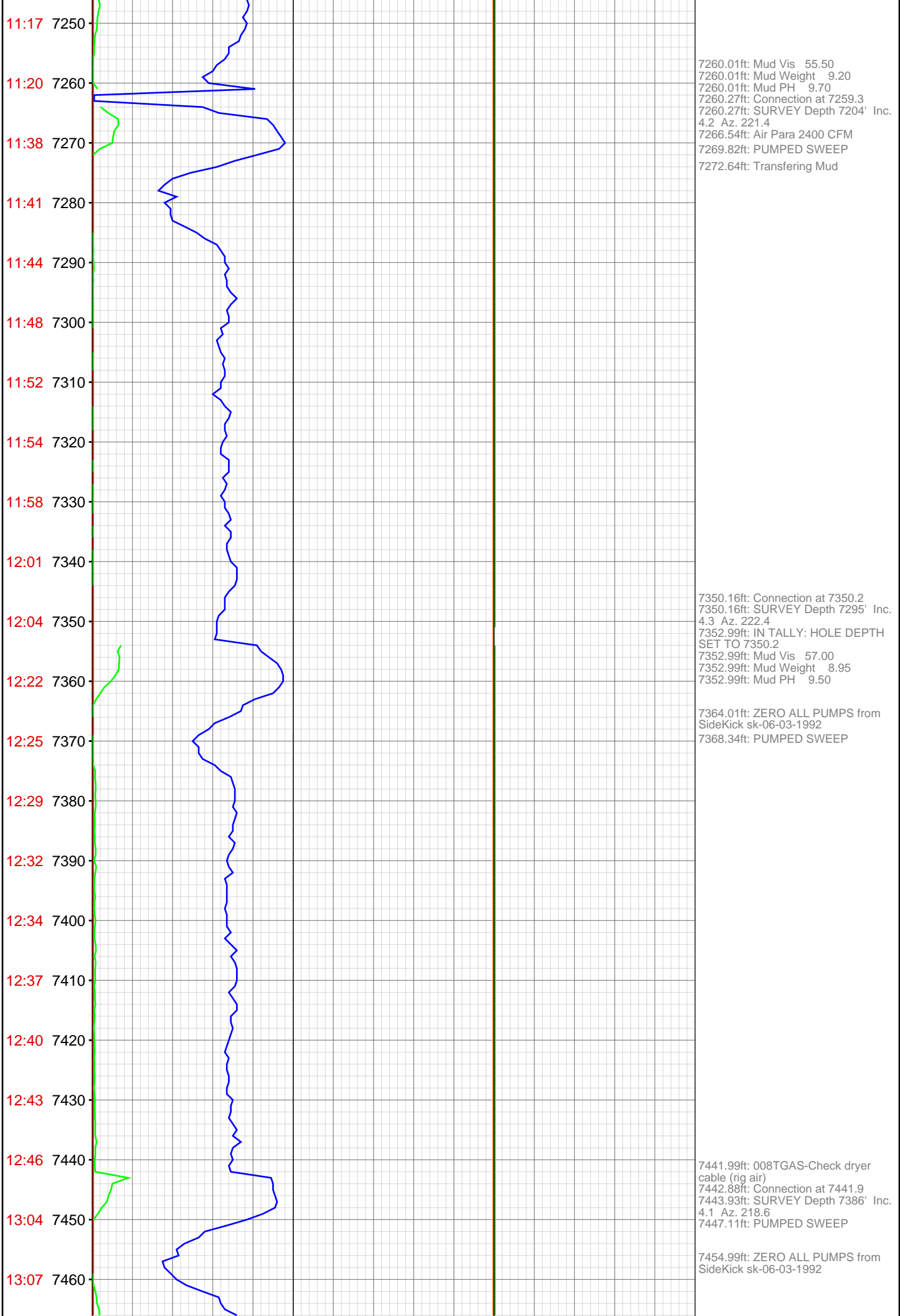












13:10 7470
13:14 7480
13:17 7490
13:21 7500
13:24 7510
13:28 7520
13:31 7530
13:48 7540
13:52 7550
13:55 7560
13:59 7570
14:03 7580
14:06 7590
14:10 7600
14:13 7610
14:17 7620
14:37 7630
14:40 7640
14:43 7650
14:46 7660
14:49 7670
14:53 7680



7484.91ft: Mud Vis 61.00
7485.99ft: Mud Weight 9.10
7485.99ft: Mud PH 9.75

7535.86ft: Connection at 7533.5
7535.86ft: SURVEY Depth 7478' Inc.
4.0 Az. 221.3
7535.86ft: ZWOB from SideKick
sk-06-03-2616

7599.54ft: MUD VIS 56 MUD
WEIGHT 9.25 MUD PH 9.4

7628.74ft: Air Para 2200 CFM
7628.84ft: Connection at 7625.2
7628.84ft: SURVEY Depth 7570' Inc.
4.3 Az. 224.1

7683.60ft: PUMPED SWEEP

