

The Road to Excellence Starts with Safety

Sold To #: 300721		Ship To #: 2816072		Quote #:		Sales Order #: 7766946	
Customer: WILLIAMS PRODUCTION RMT INC EBUSINE				Customer Rep: Shults, Mike			
Well Name: SR		Well #: 412-9		API/UWI #: 05-045-16878			
Field: RULISON		City (SAP): RIFLE		County/Parish: Garfield		State: Colorado	
Lat: N 39.456 deg. OR N 39 deg. 27 min. 20.236 secs.				Long: W 107.899 deg. OR W -108 deg. 6 min. 3.085 secs.			
Contractor: H&P 271		Rig/Platform Name/Num: H&P 271					
Job Purpose: Cement Surface Casing							
Well Type: Development Well				Job Type: Cement Surface Casing			
Sales Person: KOHL, KYLE		Srv Supervisor: CARTER, ERIC		MBU ID Emp #: 345598			
Job Personnel							
HES Emp Name	Exp Hrs	Emp #	HES Emp Name	Exp Hrs	Emp #	HES Emp Name	Exp Hrs
CARTER, ERIC Earl	6.5	345598	KUKUS, CHRISTOPHER A	6.5	413952	LOPEZ, GERALD Wayne	6.5
WOLFE, JON P	6.5	485217					
Equipment							
HES Unit #	Distance-1 way	HES Unit #	Distance-1 way	HES Unit #	Distance-1 way	HES Unit #	Distance-1 way
10722398	60 mile	10951251	60 mile	11139330	60 mile	11560046	60 mile
11562538	60 mile						
Job Hours							
Date	On Location Hours	Operating Hours	Date	On Location Hours	Operating Hours	Date	On Location Hours
11/31/10	.5	0	12/1/10	6	1		
TOTAL		<i>Total is the sum of each column separately</i>					
Job Times							
Formation Name	Date	Time	Time Zone				
Formation Depth (MD) Top 0 Bottom 1170 FT	Called Out	30 - Nov - 2010	19:00	CST			
Form Type BHST	On Location	30 - Nov - 2010	23:30	CST			
Job depth MD 1170. ft	Job Depth TVD 1170. ft	Job Started	01 - Dec - 2010	03:41	CST		
Water Depth	Wk Ht Above Floor 5. ft	Job Completed	01 - Dec - 2010	04:24	CST		
Perforation Depth (MD) From To	Departed Loc	01 - Dec - 2010	06:00	CST			
Well Data							
Description	New / Used	Max pressure psig	Size in	ID in	Weight lbm/ft	Thread	Grade
OPEN HOLE				13.5			
SURFACE CASING	Unknown		9.625	9.001	32.3		H-40
Sales/Rental/3rd Party (HES)							
Description	Qty	Qty uom	Depth	Supplier			
PLUG,CMTG,TOP,9 5/8,HWE,8.16 MIN/9.06 MA	1	EA					
R/A DENSOMETER W/CHART RECORDER,/JOB,ZI	1	JOB					
PORT. DAS W/CEMWIN;ACQUIRE W/HES, ZI	1	JOB					
ADC (AUTO DENSITY CTRL) SYS, /JOB,ZI	1	JOB					
Tools and Accessories							
Type	Size	Qty	Make	Depth	Type	Size	Qty
Guide Shoe					Packer		
Float Shoe					Bridge Plug		
Float Collar					Retainer		
Insert Float							
Stage Tool							
Miscellaneous Materials							
Gelling Agt	Conc	Surfactant	Conc	Acid Type	Qty	Conc	%
Treatment Fld	Conc	Inhibitor	Conc	Sand Type	Size	Qty	

Fluid Data									
Stage/Plug #: 1									
Fluid #	Stage Type	Fluid Name	Qty	Qty uom	Mixing Density lbm/gal	Yield ft ³ /sk	Mix Fluid Gal/sk	Rate bbl/min	Total Mix Fluid Gal/sk
1	Water Spacer		20.00	bbl	8.4	.0	.0	8	
2	VersaCem Lead Cement	VERSACEM (TM) SYSTEM (452010)	170.0	sacks	12.3	2.38	13.75	8	13.75
3	VersaCem Tail Cement	VERSACEM (TM) SYSTEM (452010)	160.0	sacks	12.8	2.11	11.76	8	11.76
		0.333 Gal	FRESH WATER						
4	Displacement Fluid		8730	bbl	8.4	.0	.0	10	
Calculated Values		Pressures		Volumes					
Displacement	87.3	Shut In: Instant		Lost Returns	NONE	Cement Slurry	132.2	Pad	
Top Of Cement	SURFACE	5 Min		Cement Returns	17	Actual Displacement	87.3	Treatment	
Frac Gradient		15 Min		Spacers	20	Load and Breakdown		Total Job	239
Notes									
Circulating	RIG	Mixing	8	Displacement	10	Avg. Job	9		
Cement Left In Pipe	Amount	43.8 ft	Reason	Shoe Joint					
Frac Ring # 1 @	ID	Frac ring # 2 @	ID	Frac Ring # 3 @	ID	Frac Ring # 4 @	ID		
The Information Stated Herein Is Correct				Customer Representative Signature					

The Road to Excellence Starts with Safety

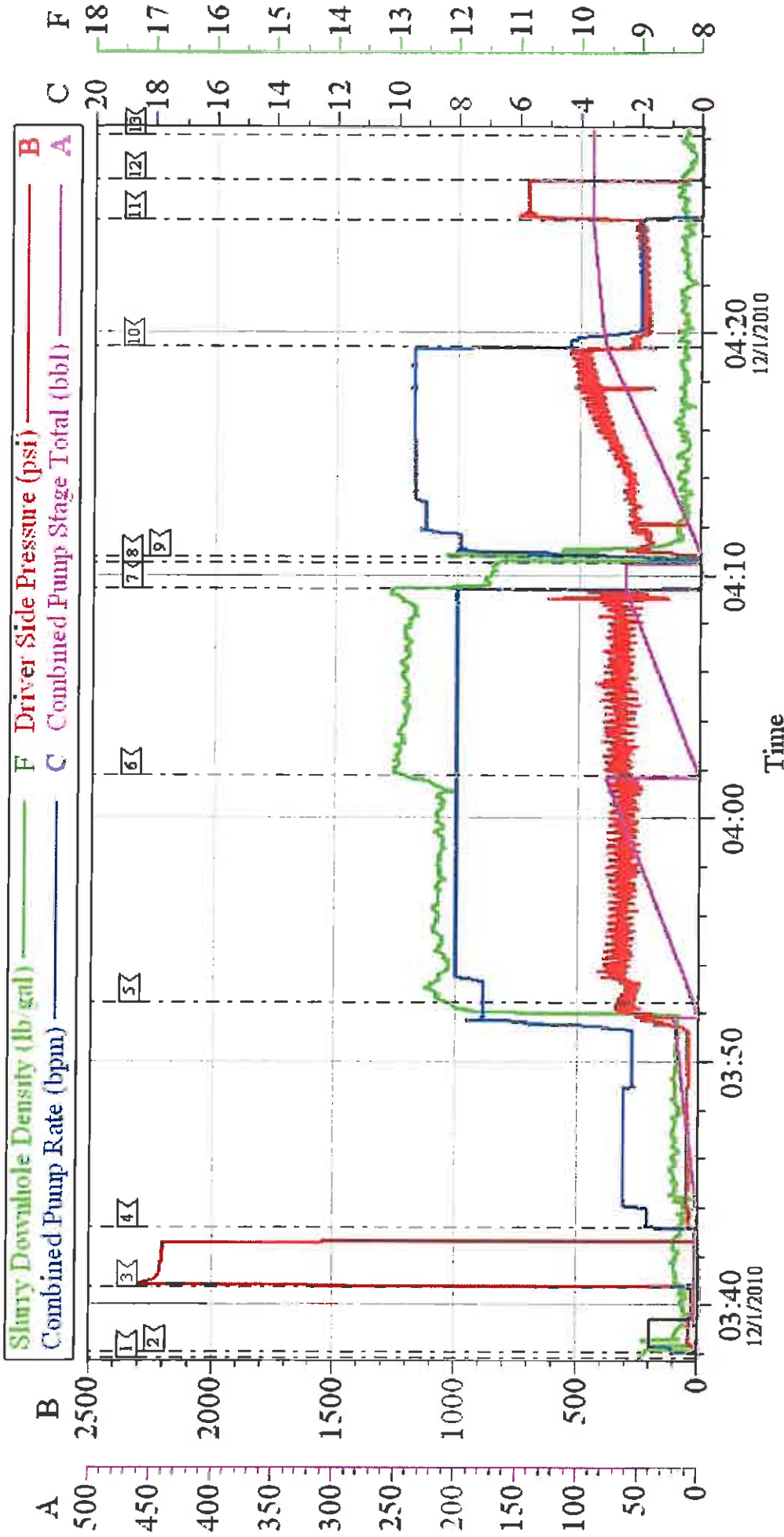
Sold To #: 300721	Ship To #: 2816072	Quote #:	Sales Order #: 7766946
Customer: WILLIAMS PRODUCTION RMT INC EBUSINE	Customer Rep: Shults, Mike		
Well Name: SR	Well #: 412-9	API/UWI #: 05-045-16878	
Field: RULISON	City (SAP): RIFLE	County/Parish: Garfield	State: Colorado
Legal Description:			
Lat: N 39.456 deg. OR N 39 deg. 27 min. 20.236 secs.		Long: W 107.899 deg. OR W -108 deg. 6 min. 3.085 secs.	
Contractor: H&P 271	Rig/Platform Name/Num: H&P 271		
Job Purpose: Cement Surface Casing	Ticket Amount:		
Well Type: Development Well	Job Type: Cement Surface Casing		
Sales Person: KOHL, KYLE	Srvc Supervisor: CARTER, ERIC	MBU ID Emp #: 345598	

Activity Description	Date/Time	Cht #	Rate bbl/ min	Volume bbl		Pressure psig		Comments
				Stage	Total	Tubing	Casing	
Call Out	11/30/2010 19:00							
Depart Yard Safety Meeting	11/30/2010 21:50							ATTENDED BY ALL HES CREW
Crew Leave Yard	11/30/2010 22:00							
Arrive At Loc	11/30/2010 23:00							RIG RUNNING CASING
Assessment Of Location Safety Meeting	11/30/2010 23:10							ATTENDED BY ALL HES CREW
Other	12/01/2010 02:30							SPOT EQUIPMENT
Pre-Rig Up Safety Meeting	12/01/2010 02:50							ATTENDED BY ALL HES CREW
Rig-Up Equipment	12/01/2010 03:00							
Pre-Job Safety Meeting	12/01/2010 03:20							ATTENDED BY ALL HES CREW, RIG CREW AND COMPANY REP
Start Job	12/01/2010 03:41							TP 1153', TD 1169.5', SJ 43.82', FC 1109.18', MW 9.9 PPG, CASING 9.625", 32.3#, H-40, HOLE 13.5"
Other	12/01/2010 03:42							PRIME LINES
Test Lines	12/01/2010 03:44							PRESSURED UP TO 2290 PSI, PRESSURE HELD
Pump Spacer 1	12/01/2010 03:47		8	20			200.0	FRESH WATER
Pump Lead Cement	12/01/2010 03:54		8	72.1			350.0	
Pump Tail Cement	12/01/2010 04:05		8	60.1			320.0	

Activity Description	Date/Time	Cht #	Rate bbl/min	Volume bbl		Pressure psig		Comments
				Stage	Total	Tubing	Casing	
Shutdown	12/01/2010 04:13							
Drop Top Plug	12/01/2010 04:14							COMPANY REP VERIFIED THAT PLUG LAUNCHED
Pump Displacement	12/01/2010 04:14		10	77.3			340.0	
Slow Rate	12/01/2010 04:21		2	10			260.0	
Bump Plug	12/01/2010 04:25						730.0	PLUG LANDED
Check Floats	12/01/2010 04:27							FLOATS HELD
End Job	12/01/2010 04:28							GOOD CIRCULATION THROUGH OUT JOB, 17 BBLS CEMENT TO SURFACE, PIPE WAS NOT MOVED DURING JOB
Post-Job Safety Meeting (Pre Rig-Down)	12/01/2010 04:30							ATTENDED BY ALL HES CREW
Rig-Down Equipment	12/01/2010 04:40							
Depart Location Safety Meeting	12/01/2010 05:50							ATTENDED BY ALL HES CREW
Crew Leave Location	12/01/2010 06:00							THANK YOU FOR USING HALLIBURTON CEMENT, ERIC CARTER AND CREW.

WILLIAMS

9.625" SURFACE/SR 412-9



Customer: WILLIAMS
Well Description: SR 412-9
Company Rep: MIKE SHULTS

Job Date: 01-Dec-2010
Job Type: SURFACE
Cement Supervisor: ERIC CARTER

Sales Order #: 7766946
ADC Used: YES
Elite #/Operator: 5/CHRIS KUKUS