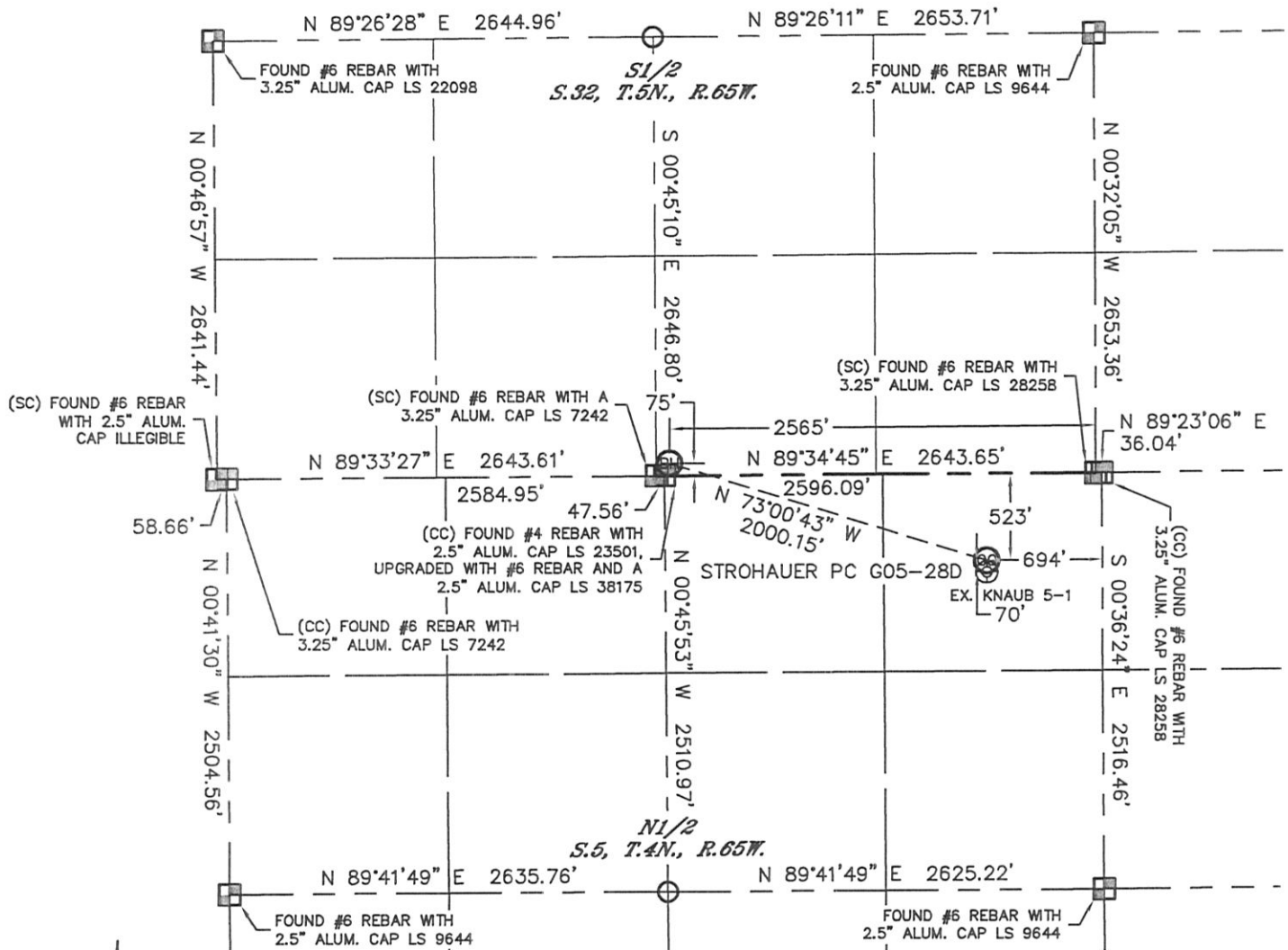


WELL LOCATION CERTIFICATE

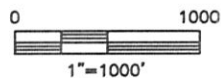
THIS MAP DOES NOT REPRESENT A BOUNDARY SURVEY

SECTION: 5
TOWNSHIP: 4N
RANGE: 65W



In accordance with a request from Brian DeRose with Noble Energy Inc. Lat40°, Inc. has determined the surface location of the STROHAUER PC G05-28D to be 523' from the NORTH line and 694' from the EAST line as measured at right angles from the section lines of Section 5, Township 4 North, Range 65 West and the bottom hole to be 75' from the SOUTH line and 2565' from the EAST line as measured at right angles from the section lines of Section 32, Township 5 North, Range 65 West of the Sixth Principal Meridian, County of Weld, State of Colorado.

I hereby state that this Well Location Certificate was prepared by me, or under my direct supervision, that the fieldwork was completed on 7/26/11, for and on behalf of Noble Energy Inc. That this is not a Land Survey Plat or an Improvement Survey Plat, and that It is not to be relied upon for establishment of fence, building, or other future improvement lines.



NOTE:

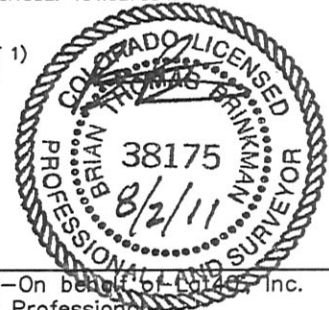
- 1) Bearings shown are Grid Bearings of the Colorado State Plane Coordinate System, North Zone, North American Datum 1983/2007. The lineal dimensions as contained herein are based upon the "U.S. Survey Foot."
- 2) Ground elevations are based on an observed GPS elevation (NAVD 1988 DATUM).
- 3) NEAREST EXISTING WELL: KNAUB 5-1, 70'
- 4) IMPROVEMENTS: See LOCATION DRAWING for all visible improvements within 400' of disturbed area.
- 5) SURFACE USE: CROP FIELD
- 6) INSTRUMENT OPERATOR: ADAM KELLY

SURFACE LOCATION
LATITUDE: 40.34704°N
LONGITUDE: 104.68021°W
PDOP: 1.5
ELEV: 4675'
1/4, 1/4: NE1/4NE1/4 (GOV'T LOT 1)
NEAREST PROPERTY LINE: 523' N

BOTTOM HOLE
LATITUDE: 40.34869°N
LONGITUDE: 104.68706°W

LEGEND

- = ALIQUOT MONUMENT AS DESCRIBED
- = CALCULATED POSITION



Brian T. Brinkman—On behalf of Lat40°, Inc.
Colorado Licensed Professional
Land Surveyor No. 38175

PROJECT#: 2011184

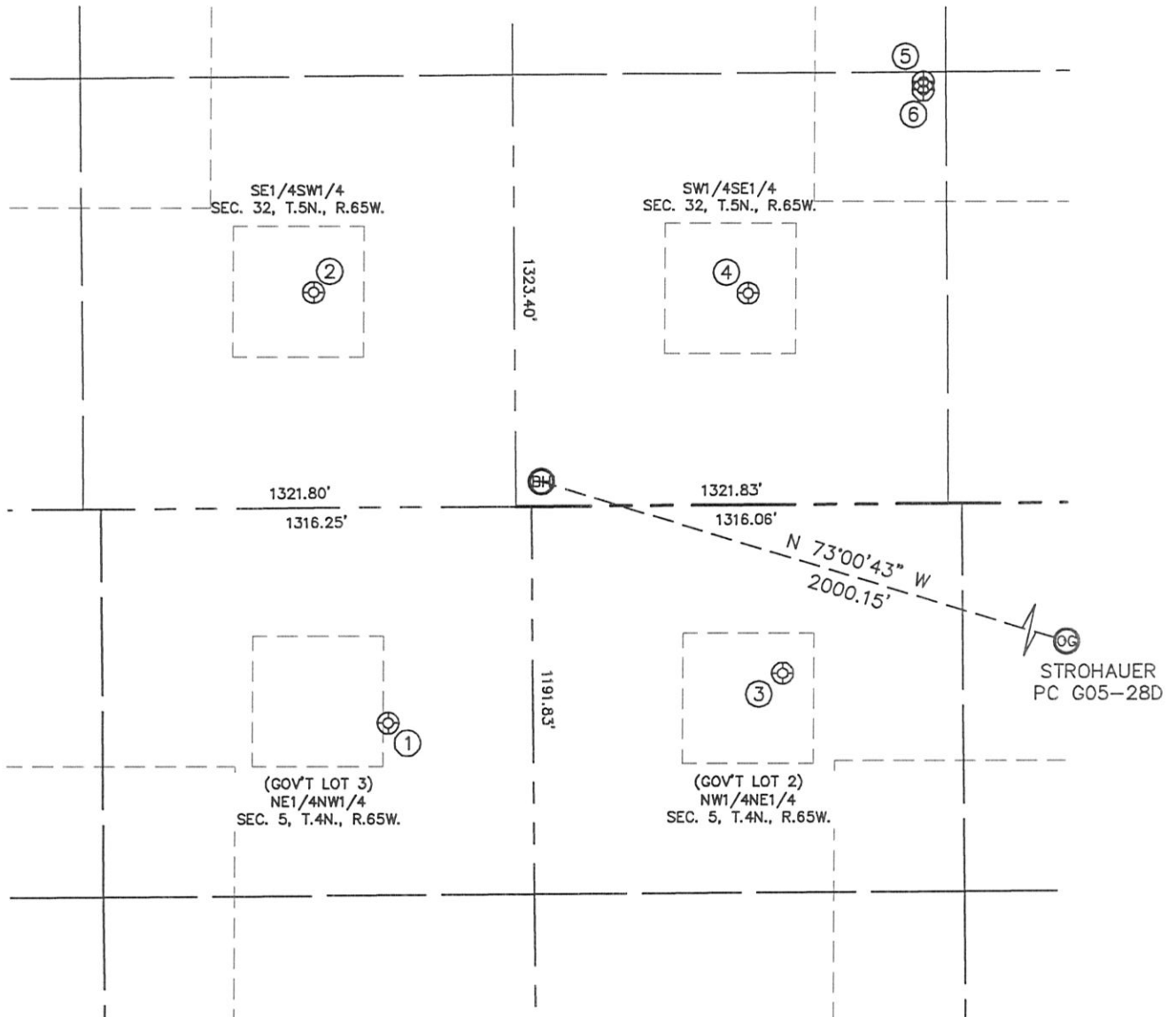
NOTE
According to Colorado law, you must commence any legal action based upon any defect in this W.L.C. within three years after you discover such defect. In no event, may any action based upon any defect in this survey be commenced more than ten years after the date of the certificate shown hereon. (13-80-105 C.R.S.)

Lat40°, Inc. 1635 Foxtrail Drive, Suite 325 Loveland, CO 970-776-3321

SITE SKETCH

STROHAUER PC G05-28D

SECTION: 5
TOWNSHIP: 4N
RANGE: 65W



①

LEE 2
NE1/4NW1/4
663' FNL
2189' FWL
LAT-40.34667°N
LONG-104.68875°W
PDOP: 2.3
ELEV: 4674'

②

STEWART 2
SE1/4SW1/4
659' FSL
2029' FWL
LAT-40.35030°N
LONG-104.68955°W
PDOP: 1.7
ELEV: 4671'

③

KNAUB 5-12
NW1/4NE1/4
519' FNL
1866' FEL
LAT-40.34706°N
LONG-104.68442°W
PDOP: 2.4
ELEV: 4675'

④

BOSTRON 1
SW1/4SE1/4
648' FSL
1931' FEL
LAT-40.35026°N
LONG-104.68478°W
PDOP: 1.9
ELEV: 4671'

⑤

STROHAUER F32-22D
SW1/4SE1/4
1294' FSL
1393' FEL
LAT-40.35203°N
LONG-104.68285°W
PDOP: 2.0
ELEV: 4668'

⑥

STROHAUER F32-23
SW1/4SE1/4
1269' FSL
1393' FEL
LAT-40.35196°N
LONG-104.68285°W
PDOP: 1.4
ELEV: 4668'

