

1625 Broadway
Suite 2000
Denver, CO 80202

Tel: 303.228.4000
Fax: 303.228.4280
www.nobleenergyinc.com



October 31, 2011

Colorado Oil and Gas Conservation Commission
The Chancery Building
1120 Lincoln Street, Suite 801
Denver, CO 80203
Attn: Mr. David Neslin, Director

RE: Strohauer PC G04-30D
Codell/Niobrara New Drill
Township 4 North, Range 65 West, 6th P.M.
Section 5: NE/4NE/4: 546' FNL & 694' FEL (Surface Location)
Section 5: NE/4NE/4: 75' FNL & 75' FEL (Bottom Hole Location)
Weld County, Colorado

Mr. Neslin:

Noble Energy, Inc. ("NEI") is planning to drill the captioned boundary well in accordance with the provisions of COGCC Rule 318A.e.

NEI's proposed wellbore spacing unit consists of the NW/4NW/4, Sec 4 & NE/4NE/4, Sec 5, T4N, R65W, SW/4SW/4, Sec 33 & SE/4SE/4 Sec 32, T5N, R65W, creating a 160-acre wellbore spacing unit. NEI is the only owner within the proposed wellbore spacing unit, therefore NEI hereby attests that no notice letters are required under COGCC Rule 318A(l).e.(6).

Enclosed are copies of the following documents to assist you in your review and approval of NEI's proposed APD for the captioned well:

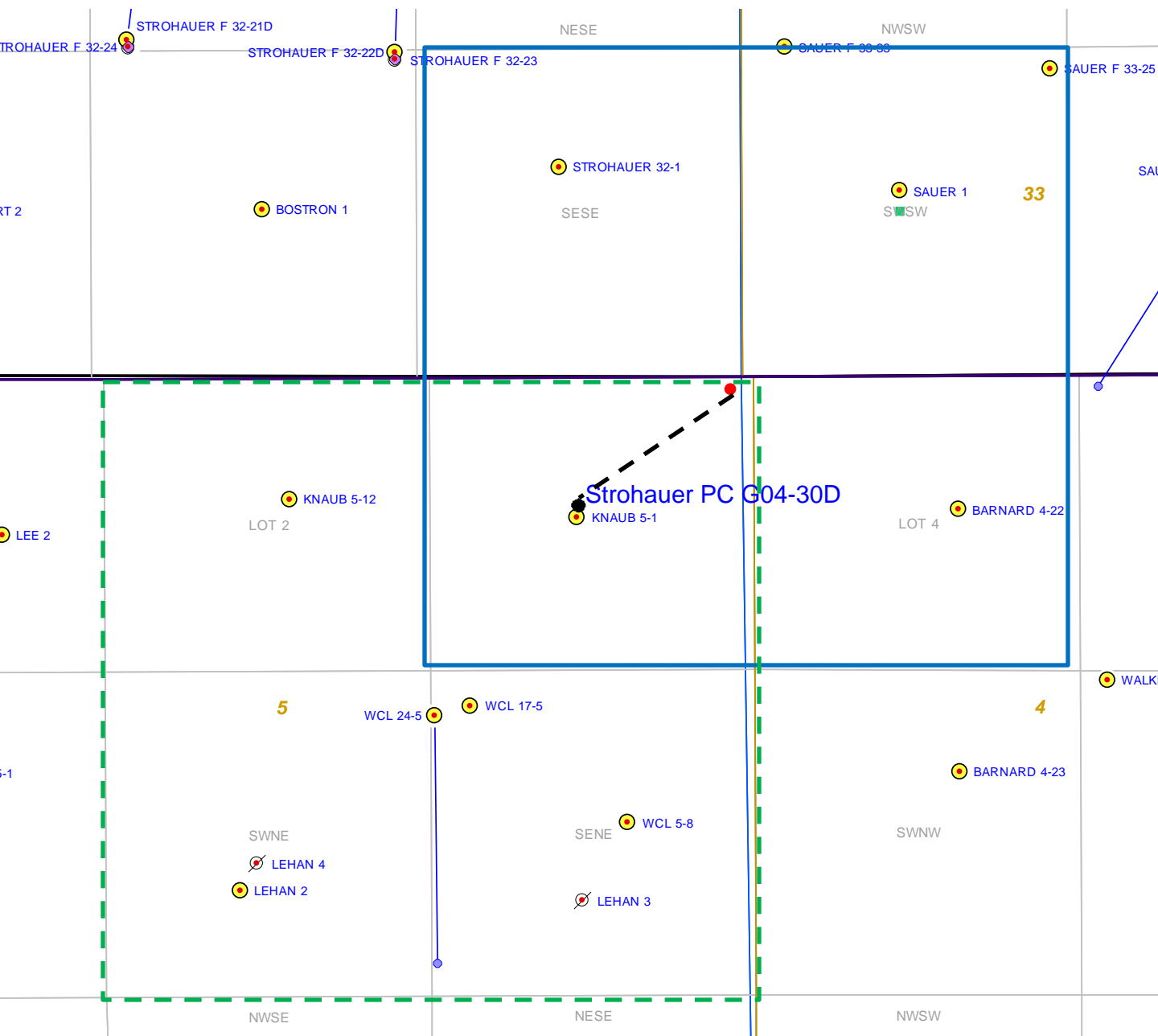
- Map & plat illustrating proposed wellbore spacing unit.

Thank you for your attention to the enclosed. NEI respectfully requests that the COGCC review the enclosed information and approve the Application for Permit to Drill the captioned well.

Sincerely,

Justin Garrett
Regulatory Specialist
Noble Energy Inc.

Strohauer PC G04-30D
Noble Energy, Inc
(Lot 1) NE/4NE/4 Section 5, Township 4 North, Range 65 West



Legend



Proposed 160 acre spacing unit



Bottom Hole Location

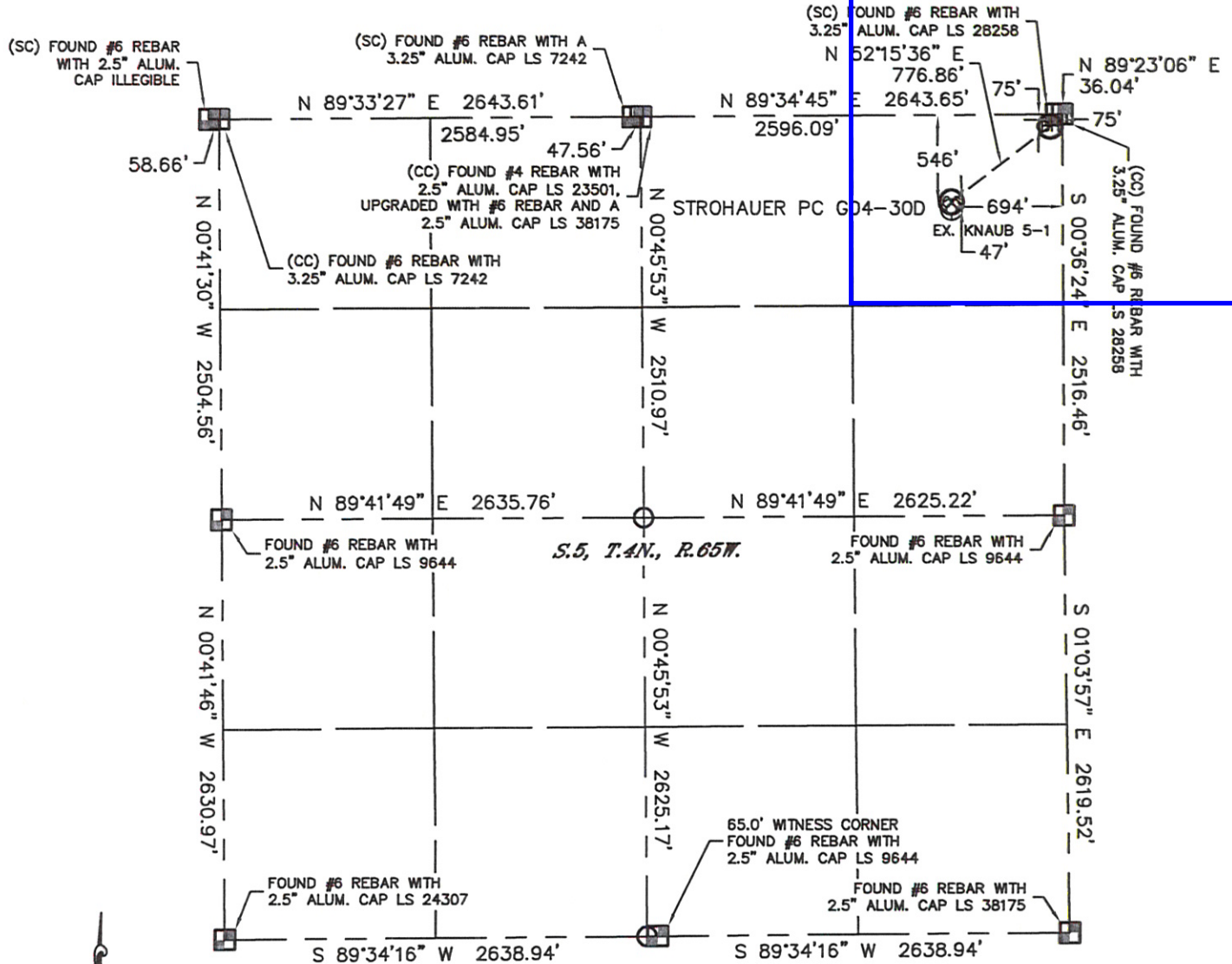


Bottom Hole Located NE/4, Sec. 5, T4N, R65W

WELL LOCATION CERTIFICATE

THIS MAP DOES NOT REPRESENT A BOUNDARY SURVEY

SECTION: 5
TOWNSHIP: 4N
RANGE: 65W



In accordance with a request from Brian DeRose with Noble Energy Inc. Lat40°, Inc. has determined the surface location of the STROHAUER PC G04-30D to be 546' from the NORTH line and 694' from the EAST line and the bottom hole to be 75' from the NORTH line and 75' from the EAST line as measured at right angles from the section lines of Section 5, Township 4 North, Range 65 West of the Sixth Principal Meridian, County of Weld, State of Colorado.

I hereby state that this Well Location Certificate was prepared by me, or under my direct supervision, that the fieldwork was completed on 7/26/11, for and on behalf of Noble Energy Inc. That this is not a Land Survey Plat or an Improvement Survey Plat, and that it is not to be relied upon for establishment of fence, building, or other future improvement lines.

NOTE:

- 1) Bearings shown are Grid Bearings of the Colorado State Plane Coordinate System, North Zone, North American Datum 1983/2007. The lineal dimensions as contained herein are based upon the "U.S. Survey Foot."
- 2) Ground elevations are based on an observed GPS elevation (NAVD 1988 DATUM).
- 3) NEAREST EXISTING WELL: KNAUB 5-1, 47'
- 4) IMPROVEMENTS: See LOCATION DRAWING for all visible improvements within 400' of disturbed area.
- 5) SURFACE USE: CROP FIELD
- 6) INSTRUMENT OPERATOR: ADAM KELLY

SURFACE LOCATION

LATITUDE: 40.34698°N
LONGITUDE: 104.68021°W
PDOP: 1.5
ELEV: 4675'
1/4, 1/4: NE1/4NE1/4 (GOV'T LOT 1)
NEAREST PROPERTY LINE: 546' N

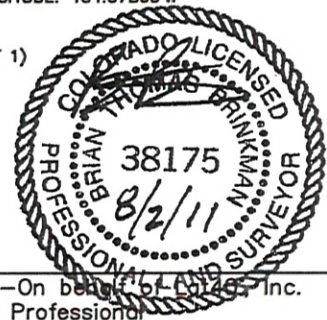
BOTTOM HOLE

LATITUDE: 40.34827°N
LONGITUDE: 104.67800°W

NOTE
According to Colorado law, you must commence any legal action based upon any defect in this W.L.C. within three years after you discover such defect. In no event, may any action based upon any defect in this survey be commenced more than ten years after the date of the certificate shown hereon. (13-80-105 C.R.S.)

LEGEND

- = ALIQUOT MONUMENT AS DESCRIBED
- = CALCULATED POSITION



Brian T. Brinkman—On behalf of Lat40°, Inc.
Colorado Licensed Professional
Land Surveyor No. 38175

PROJECT#: 2011184