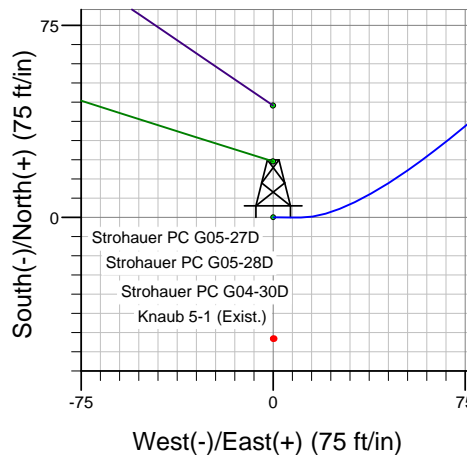
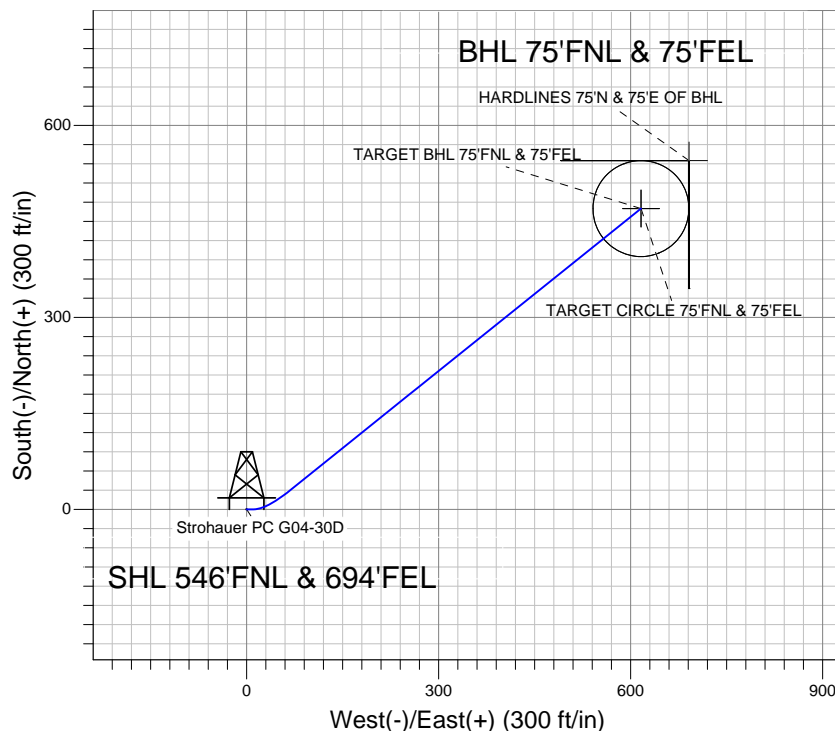
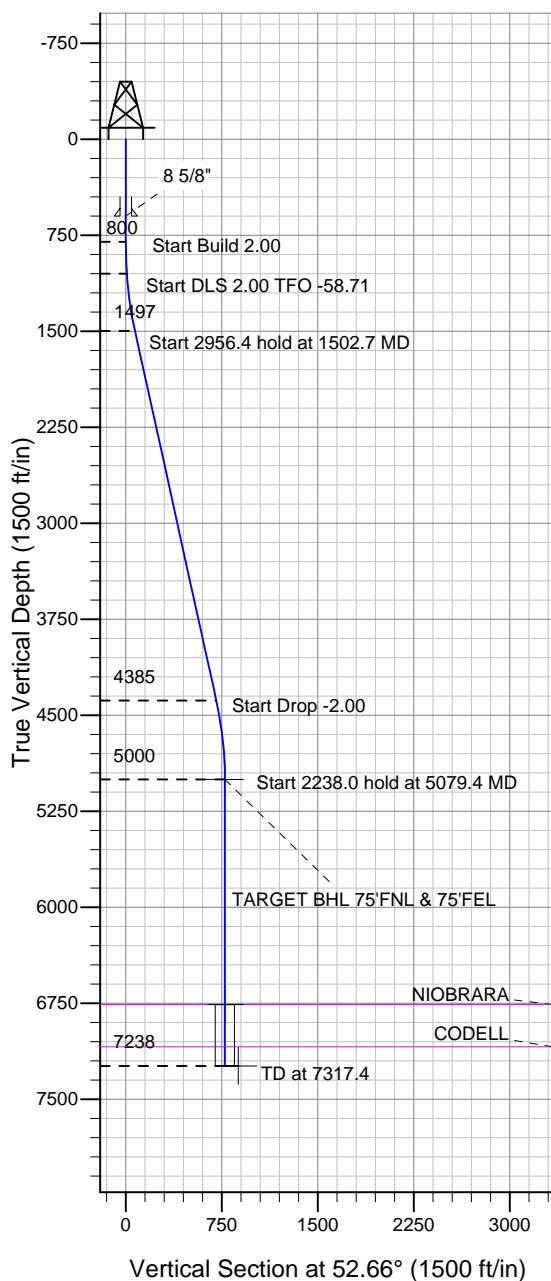


Well Name: Strohauer PC G04-30D

Surface Location: Strohauer PC G05-27D Pad Sec.5-T4N-R65W
North American Datum 1983, US State Plane 1983 Colorado Northern Zone
Ground Elevation: 4675.0

+N/-S	+E/-W	Northing	Easting	Latitude	Longitude	Slot
0.0	0.0	1370301.68	3228495.31	40.346980	-104.680210	
Original Well EleWELL @ 4688.0ft (Original Well Elev)						

NOBLE ENERGY INC WELD COUNTY CO



Strohauer PC G05-27D Pad Sec.5-T4N-R65W
Strohauer PC G04-30D
Noble Strohauer PC G04-30D Plan #1 (8-19-11)
16:50, August 23 2011



Azimuths to True North
Magnetic North: 8.79°
Magnetic Field
Strength: 53095.2snT
Dip Angle: 67.02°
Date: 8/19/2011
Model: IGRF2010

WELLBORE TARGET DETAILS (LAT/LONG)

Name	TVD	+N/-S	+E/-W	Latitude	Longitude	Shape
TARGET BHL 75'FNL & 75'FEL	5000.0	470.0	616.0	40.348270	-104.678000	Point
TARGET CIRCLE 75'FNL & 75'FEL	6758.0	470.0	616.0	40.348270	-104.678000	Circle (Radius: 75.0)
HARDLINES 75'N & 75'E OF BHL	7238.0	545.0	691.0	40.348476	-104.677731	Polygon

SECTION DETAILS

Sec	MD	Inc	Azi	TVD	+N/-S	+E/-W	DLeg	TFace	VSec	Target
1	0.0	0.00	0.00	0.0	0.0	0.0	0.00	0.00	0.0	
2	800.0	0.00	0.00	800.0	0.0	0.0	0.00	0.00	0.0	
3	1050.0	5.00	90.00	1049.7	0.0	10.9	2.00	90.00	8.7	
4	1502.7	12.40	51.24	1497.2	30.5	68.7	2.00	-58.71	73.1	
5	4459.2	12.40	51.24	4384.6	428.1	563.9	0.00	0.00	708.0	
6	5079.4	0.00	0.00	5000.0	470.0	616.0	2.00	180.00	774.8	TARGET BHL 75'FNL & 75'FEL
7	7317.4	0.00	0.00	7238.0	470.0	616.0	0.00	0.00	774.8	