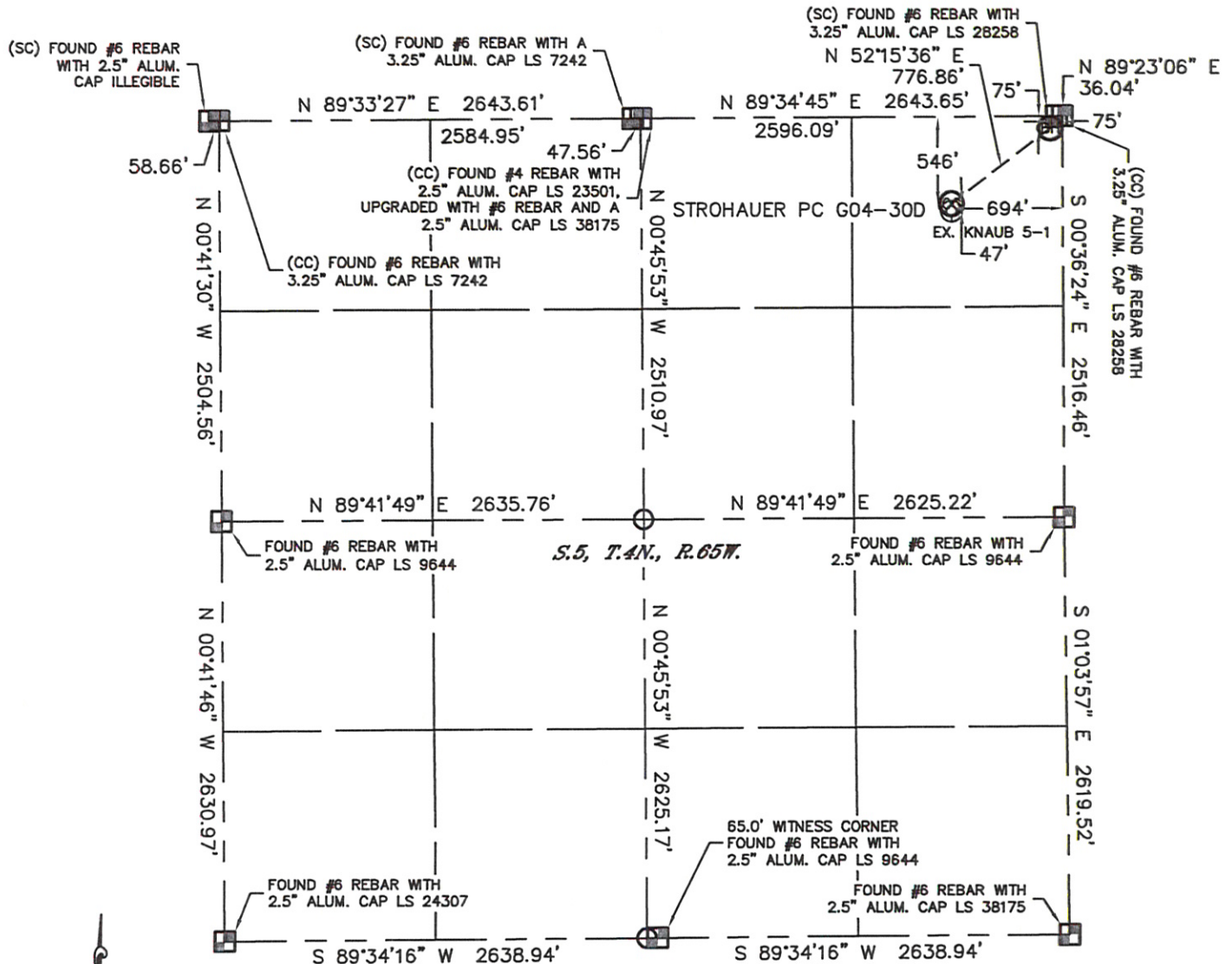


Lat40°, Inc. 1635 Foxtrail Drive, Suite 325 Loveland, CO 970-776-3321

# WELL LOCATION CERTIFICATE

THIS MAP DOES NOT REPRESENT A BOUNDARY SURVEY

SECTION: 5  
TOWNSHIP: 4N  
RANGE: 65W



In accordance with a request from Brian DeRose with Noble Energy Inc. Lat40°, Inc. has determined the surface location of the STROHAUER PC G04-30D to be 546' from the NORTH line and 694' from the EAST line and the bottom hole to be 75' from the NORTH line and 75' from the EAST line as measured at right angles from the section lines of Section 5, Township 4 North, Range 65 West of the Sixth Principal Meridian, County of Weld, State of Colorado.

I hereby state that this Well Location Certificate was prepared by me, or under my direct supervision, that the fieldwork was completed on 7/26/11, for and on behalf of Noble Energy Inc. That this is not a Land Survey Plat or an Improvement Survey Plat, and that it is not to be relied upon for establishment of fence, building, or other future improvement lines.

## NOTE:

- 1) Bearings shown are Grid Bearings of the Colorado State Plane Coordinate System, North Zone, North American Datum 1983/2007. The lineal dimensions as contained herein are based upon the "U.S. Survey Foot."
- 2) Ground elevations are based on an observed GPS elevation (NAVD 1988 DATUM).
- 3) NEAREST EXISTING WELL: KNAUB 5-1, 47'
- 4) IMPROVEMENTS: See LOCATION DRAWING for all visible improvements within 400' of disturbed area.
- 5) SURFACE USE: CROP FIELD
- 6) INSTRUMENT OPERATOR: ADAM KELLY

## NOTE

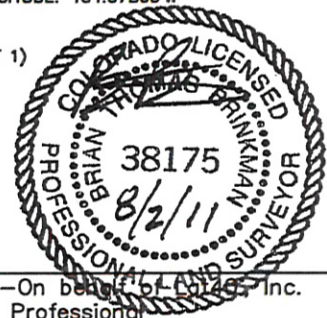
According to Colorado law, you must commence any legal action based upon any defect in this W.L.C. within three years after you discover such defect. In no event, may any action based upon any defect in this survey be commenced more than ten years after the date of the certificate shown hereon. (13-80-105 C.R.S.)

## LEGEND

- = ALIQUOT MONUMENT AS DESCRIBED
- = CALCULATED POSITION

SURFACE LOCATION  
LATITUDE: 40.34698°N  
LONGITUDE: 104.68021°W  
PDOP: 1.5  
ELEV: 4675'  
1/4, 1/4: NE1/4NE1/4 (GOV'T LOT 1)  
NEAREST PROPERTY LINE: 546' N

BOTTOM HOLE  
LATITUDE: 40.34827°N  
LONGITUDE: 104.67800°W



Brian T. Brinkman—On behalf of Lat40°, Inc.  
Colorado Licensed Professional  
Land Surveyor No. 38175

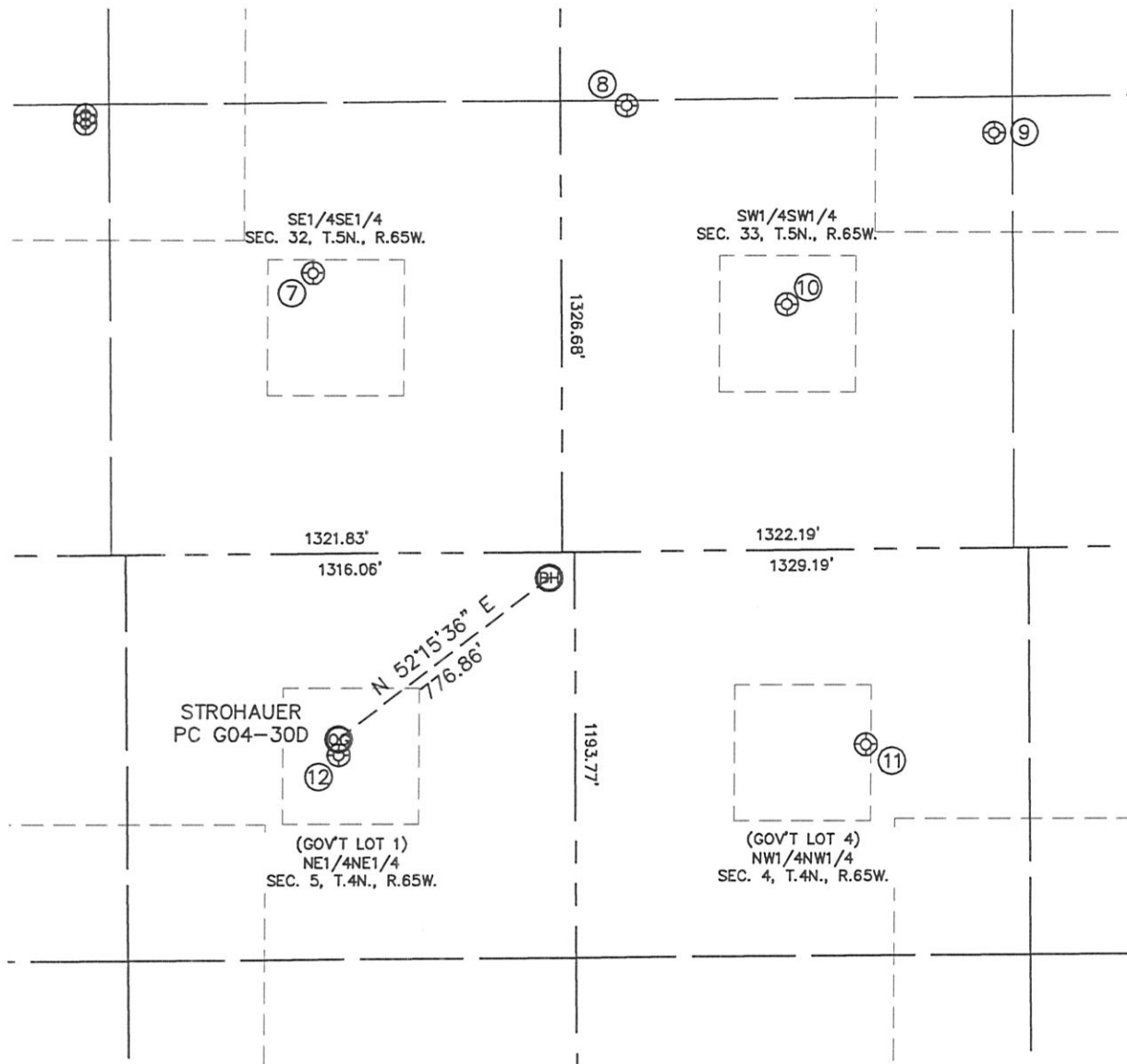
PROJECT#: 2011184

Lat40°, Inc. 1635 Foxtrail Drive, Suite 325 Loveland, CO 970-776-3321

# SITE SKETCH

## STROHAUER PC G04-30D

SECTION: 5  
TOWNSHIP: 4N  
RANGE: 65W



⑦

STROHAUER 32-1  
SE1/4SE1/4  
824' FSL  
728' FEL  
LAT-40.35074°N  
LONG-104.68047°W  
PDOP: 2.4  
ELEV: 4669'

⑧

SAUER F33-33  
SW1/4SW1/4  
1311' FSL  
194' FWL  
LAT-40.35207°N  
LONG-104.67716°W  
PDOP: 2.2  
ELEV: 4665'

⑨

SAUER F33-25  
SW1/4SW1/4  
1221' FSL  
1269' FWL  
LAT-40.35183°N  
LONG-104.67330°W  
PDOP: 1.9  
ELEV: 4662'

⑩

SAUER 1  
SW1/4SW1/4  
721' FSL  
659' FWL  
LAT-40.35045°N  
LONG-104.67549°W  
PDOP: 2.0  
ELEV: 4669'

⑪

BARNARD 4-22  
NW1/4NW1/4  
576' FNL  
850' FWL  
LAT-40.34690°N  
LONG-104.67467°W  
PDOP: 2.0  
ELEV: 4672'

⑫

KNAUB 5-1  
NE1/4NE1/4  
593' FNL  
694' FEL  
LAT-40.34685°N  
LONG-104.68021°W  
PDOP: 1.7  
ELEV: 4674'

