

Continental Resources, Inc.

Weld County, CO
Sec. 11-T7N-R62W
Conrad 1-11H

Plan A

Plan: Plan A - Rev 0 Proposal

Sperry Drilling Services Proposal Report

27 October, 2011

Well Coordinates: 1,461,720.14 N, 3,338,595.28 E (40° 35' 39.95" N, 104° 16' 50.62" W)
Ground Level: 4,938.00 ft

Local Coordinate Origin:

Centered on Well Conrad 1-11H

Viewing Datum:

KB @ 4954.00ft (Rig KB)

TVDs to System:

N

North Reference:

Grid

Unit System:

API - US Survey Feet - Custom

Geodetic Scale Factor Applied

Version: 2003.16 Build: 431

HALLIBURTON

Plan Report for Conrad 1-11H - Plan A - Rev 0 Proposal

Measured Depth (ft)	Inclination (°)	Azimuth (°)	Vertical Depth (ft)	+N/-S (ft)	+E/-W (ft)	Vertical Section (ft)	Dogleg Rate (°/100ft)	Build Rate (°/100ft)	Turn Rate (°/100ft)	Toolface Azimuth (°)
0.00	0.00	0.00	0.00	0.00	0.00	0.00	0.00	0.00	0.00	0.00
100.00	0.00	0.00	100.00	0.00	0.00	0.00	0.00	0.00	0.00	0.00
200.00	0.00	0.00	200.00	0.00	0.00	0.00	0.00	0.00	0.00	0.00
300.00	0.00	0.00	300.00	0.00	0.00	0.00	0.00	0.00	0.00	0.00
400.00	0.00	0.00	400.00	0.00	0.00	0.00	0.00	0.00	0.00	0.00
500.00	0.00	0.00	500.00	0.00	0.00	0.00	0.00	0.00	0.00	0.00
600.00	0.00	0.00	600.00	0.00	0.00	0.00	0.00	0.00	0.00	0.00
700.00	0.00	0.00	700.00	0.00	0.00	0.00	0.00	0.00	0.00	0.00
800.00	0.00	0.00	800.00	0.00	0.00	0.00	0.00	0.00	0.00	0.00
900.00	0.00	0.00	900.00	0.00	0.00	0.00	0.00	0.00	0.00	0.00
1,000.00	0.00	0.00	1,000.00	0.00	0.00	0.00	0.00	0.00	0.00	0.00
1,100.00	0.00	0.00	1,100.00	0.00	0.00	0.00	0.00	0.00	0.00	0.00
1,200.00	0.00	0.00	1,200.00	0.00	0.00	0.00	0.00	0.00	0.00	0.00
1,300.00	0.00	0.00	1,300.00	0.00	0.00	0.00	0.00	0.00	0.00	0.00
1,400.00	0.00	0.00	1,400.00	0.00	0.00	0.00	0.00	0.00	0.00	0.00
1,500.00	0.00	0.00	1,500.00	0.00	0.00	0.00	0.00	0.00	0.00	0.00
1,594.00	0.00	0.00	1,594.00	0.00	0.00	0.00	0.00	0.00	0.00	0.00
Pierre										
1,600.00	0.00	0.00	1,600.00	0.00	0.00	0.00	0.00	0.00	0.00	0.00
1,700.00	0.00	0.00	1,700.00	0.00	0.00	0.00	0.00	0.00	0.00	0.00
1,800.00	0.00	0.00	1,800.00	0.00	0.00	0.00	0.00	0.00	0.00	0.00
1,900.00	0.00	0.00	1,900.00	0.00	0.00	0.00	0.00	0.00	0.00	0.00
2,000.00	0.00	0.00	2,000.00	0.00	0.00	0.00	0.00	0.00	0.00	0.00
2,100.00	0.00	0.00	2,100.00	0.00	0.00	0.00	0.00	0.00	0.00	0.00
2,200.00	0.00	0.00	2,200.00	0.00	0.00	0.00	0.00	0.00	0.00	0.00
2,300.00	0.00	0.00	2,300.00	0.00	0.00	0.00	0.00	0.00	0.00	0.00
2,400.00	0.00	0.00	2,400.00	0.00	0.00	0.00	0.00	0.00	0.00	0.00
2,500.00	0.00	0.00	2,500.00	0.00	0.00	0.00	0.00	0.00	0.00	0.00
2,600.00	0.00	0.00	2,600.00	0.00	0.00	0.00	0.00	0.00	0.00	0.00
2,700.00	0.00	0.00	2,700.00	0.00	0.00	0.00	0.00	0.00	0.00	0.00
2,800.00	0.00	0.00	2,800.00	0.00	0.00	0.00	0.00	0.00	0.00	0.00
2,900.00	0.00	0.00	2,900.00	0.00	0.00	0.00	0.00	0.00	0.00	0.00
3,000.00	0.00	0.00	3,000.00	0.00	0.00	0.00	0.00	0.00	0.00	0.00
3,100.00	0.00	0.00	3,100.00	0.00	0.00	0.00	0.00	0.00	0.00	0.00
3,200.00	0.00	0.00	3,200.00	0.00	0.00	0.00	0.00	0.00	0.00	0.00
3,300.00	0.00	0.00	3,300.00	0.00	0.00	0.00	0.00	0.00	0.00	0.00
3,400.00	0.00	0.00	3,400.00	0.00	0.00	0.00	0.00	0.00	0.00	0.00
3,500.00	0.00	0.00	3,500.00	0.00	0.00	0.00	0.00	0.00	0.00	0.00
3,594.00	0.00	0.00	3,594.00	0.00	0.00	0.00	0.00	0.00	0.00	0.00
Laramie										
3,600.00	0.00	0.00	3,600.00	0.00	0.00	0.00	0.00	0.00	0.00	0.00
3,700.00	0.00	0.00	3,700.00	0.00	0.00	0.00	0.00	0.00	0.00	0.00
3,800.00	0.00	0.00	3,800.00	0.00	0.00	0.00	0.00	0.00	0.00	0.00
3,900.00	0.00	0.00	3,900.00	0.00	0.00	0.00	0.00	0.00	0.00	0.00
4,000.00	0.00	0.00	4,000.00	0.00	0.00	0.00	0.00	0.00	0.00	0.00
4,100.00	0.00	0.00	4,100.00	0.00	0.00	0.00	0.00	0.00	0.00	0.00
4,200.00	0.00	0.00	4,200.00	0.00	0.00	0.00	0.00	0.00	0.00	0.00
4,300.00	0.00	0.00	4,300.00	0.00	0.00	0.00	0.00	0.00	0.00	0.00
4,400.00	0.00	0.00	4,400.00	0.00	0.00	0.00	0.00	0.00	0.00	0.00
4,500.00	0.00	0.00	4,500.00	0.00	0.00	0.00	0.00	0.00	0.00	0.00
4,600.00	0.00	0.00	4,600.00	0.00	0.00	0.00	0.00	0.00	0.00	0.00
4,700.00	0.00	0.00	4,700.00	0.00	0.00	0.00	0.00	0.00	0.00	0.00
4,800.00	0.00	0.00	4,800.00	0.00	0.00	0.00	0.00	0.00	0.00	0.00
4,900.00	0.00	0.00	4,900.00	0.00	0.00	0.00	0.00	0.00	0.00	0.00
5,000.00	0.00	0.00	5,000.00	0.00	0.00	0.00	0.00	0.00	0.00	0.00
5,100.00	0.00	0.00	5,100.00	0.00	0.00	0.00	0.00	0.00	0.00	0.00
5,200.00	0.00	0.00	5,200.00	0.00	0.00	0.00	0.00	0.00	0.00	0.00
5,300.00	0.00	0.00	5,300.00	0.00	0.00	0.00	0.00	0.00	0.00	0.00

HALLIBURTON**Plan Report for Conrad 1-11H - Plan A - Rev 0 Proposal**

Measured Depth (ft)	Inclination (°)	Azimuth (°)	Vertical Depth (ft)	+N/-S (ft)	+E/-W (ft)	Vertical Section (ft)	Dogleg Rate (°/100ft)	Build Rate (°/100ft)	Turn Rate (°/100ft)	Toolface Azimuth (°)
5,400.00	0.00	0.00	5,400.00	0.00	0.00	0.00	0.00	0.00	0.00	0.00
5,500.00	0.00	0.00	5,500.00	0.00	0.00	0.00	0.00	0.00	0.00	0.00
5,600.00	0.00	0.00	5,600.00	0.00	0.00	0.00	0.00	0.00	0.00	0.00
5,700.00	0.00	0.00	5,700.00	0.00	0.00	0.00	0.00	0.00	0.00	0.00
5,800.00	0.00	0.00	5,800.00	0.00	0.00	0.00	0.00	0.00	0.00	0.00
5,900.00	0.00	0.00	5,900.00	0.00	0.00	0.00	0.00	0.00	0.00	0.00
6,000.00	0.00	0.00	6,000.00	0.00	0.00	0.00	0.00	0.00	0.00	0.00
6,100.00	0.00	0.00	6,100.00	0.00	0.00	0.00	0.00	0.00	0.00	0.00
6,200.00	0.00	0.00	6,200.00	0.00	0.00	0.00	0.00	0.00	0.00	0.00
6,222.76	0.00	0.00	6,222.76	0.00	0.00	0.00	0.00	0.00	0.00	0.00
KOP - Begin 12.0°/100ft Build at 6222.76ft										
6,300.00	9.27	180.15	6,299.66	-6.23	-0.02	6.23	12.00	12.00	0.00	180.15
6,400.00	21.27	180.15	6,395.96	-32.52	-0.09	32.52	12.00	12.00	0.00	0.00
6,500.00	33.27	180.15	6,484.68	-78.25	-0.21	78.25	12.00	12.00	0.00	0.00
6,535.99	37.59	180.15	6,514.00	-99.11	-0.26	99.11	12.00	12.00	0.00	0.00
Sharon Springs										
6,600.00	45.27	180.15	6,561.96	-141.43	-0.38	141.43	12.00	12.00	0.00	0.00
6,648.05	51.03	180.15	6,594.00	-177.21	-0.47	177.21	12.00	12.00	0.00	0.00
Niobrara										
6,700.00	57.27	180.15	6,624.41	-219.30	-0.58	219.30	12.00	12.00	0.00	0.00
6,718.28	59.46	180.15	6,634.00	-234.86	-0.62	234.87	12.00	12.00	0.00	0.00
Niobrara "B"										
6,800.00	69.27	180.15	6,669.31	-308.45	-0.82	308.45	12.00	12.00	0.00	0.00
6,833.29	73.26	180.15	6,680.00	-339.97	-0.90	339.97	12.00	12.00	0.00	0.00
Lower "B"										
6,900.00	81.27	180.15	6,694.69	-404.98	-1.08	404.99	12.00	12.00	0.00	0.00
6,958.11	88.24	180.15	6,700.00	-462.81	-1.23	462.81	12.00	12.00	0.00	0.00
Target										
6,987.32	91.75	180.15	6,700.00	-492.02	-1.31	492.02	12.00	12.00	0.00	0.00
End of Build / Landing Point at 6987.32ft - 7" Csg										
7,000.00	91.75	180.15	6,699.62	-504.69	-1.34	504.70	0.00	0.00	0.00	0.00
7,100.00	91.75	180.15	6,696.57	-604.65	-1.61	604.65	0.00	0.00	0.00	0.00
7,200.00	91.75	180.15	6,693.52	-704.60	-1.87	704.60	0.00	0.00	0.00	0.00
7,300.00	91.75	180.15	6,690.47	-804.55	-2.14	804.56	0.00	0.00	0.00	0.00
7,400.00	91.75	180.15	6,687.42	-904.51	-2.40	904.51	0.00	0.00	0.00	0.00
7,500.00	91.75	180.15	6,684.37	-1,004.46	-2.67	1,004.46	0.00	0.00	0.00	0.00
7,600.00	91.75	180.15	6,681.32	-1,104.41	-2.93	1,104.42	0.00	0.00	0.00	0.00
7,700.00	91.75	180.15	6,678.27	-1,204.37	-3.20	1,204.37	0.00	0.00	0.00	0.00
7,800.00	91.75	180.15	6,675.22	-1,304.32	-3.46	1,304.32	0.00	0.00	0.00	0.00
7,900.00	91.75	180.15	6,672.17	-1,404.27	-3.73	1,404.28	0.00	0.00	0.00	0.00
8,000.00	91.75	180.15	6,669.12	-1,504.23	-3.99	1,504.23	0.00	0.00	0.00	0.00
8,100.00	91.75	180.15	6,666.07	-1,604.18	-4.26	1,604.19	0.00	0.00	0.00	0.00
8,200.00	91.75	180.15	6,663.02	-1,704.13	-4.52	1,704.14	0.00	0.00	0.00	0.00
8,300.00	91.75	180.15	6,659.97	-1,804.09	-4.79	1,804.09	0.00	0.00	0.00	0.00
8,400.00	91.75	180.15	6,656.92	-1,904.04	-5.05	1,904.05	0.00	0.00	0.00	0.00
8,500.00	91.75	180.15	6,653.88	-2,003.99	-5.32	2,004.00	0.00	0.00	0.00	0.00
8,600.00	91.75	180.15	6,650.83	-2,103.95	-5.59	2,103.95	0.00	0.00	0.00	0.00
8,700.00	91.75	180.15	6,647.78	-2,203.90	-5.85	2,203.91	0.00	0.00	0.00	0.00
8,800.00	91.75	180.15	6,644.73	-2,303.85	-6.12	2,303.86	0.00	0.00	0.00	0.00
Hold Angle at 91.75°										
8,900.00	91.75	180.15	6,641.68	-2,403.80	-6.38	2,403.81	0.00	0.00	0.00	0.00
9,000.00	91.75	180.15	6,638.63	-2,503.76	-6.65	2,503.77	0.00	0.00	0.00	0.00
9,100.00	91.75	180.15	6,635.58	-2,603.71	-6.91	2,603.72	0.00	0.00	0.00	0.00
9,200.00	91.75	180.15	6,632.53	-2,703.66	-7.18	2,703.67	0.00	0.00	0.00	0.00
9,300.00	91.75	180.15	6,629.48	-2,803.62	-7.44	2,803.63	0.00	0.00	0.00	0.00
9,400.00	91.75	180.15	6,626.43	-2,903.57	-7.71	2,903.58	0.00	0.00	0.00	0.00
9,500.00	91.75	180.15	6,623.38	-3,003.52	-7.97	3,003.53	0.00	0.00	0.00	0.00
9,600.00	91.75	180.15	6,620.33	-3,103.48	-8.24	3,103.49	0.00	0.00	0.00	0.00
9,700.00	91.75	180.15	6,617.28	-3,203.43	-8.50	3,203.44	0.00	0.00	0.00	0.00

Plan Report for Conrad 1-11H - Plan A - Rev 0 Proposal

Measured Depth (ft)	Inclination (°)	Azimuth (°)	Vertical Depth (ft)	+N/-S (ft)	+E/-W (ft)	Vertical Section (ft)	Dogleg Rate (°/100ft)	Build Rate (°/100ft)	Turn Rate (°/100ft)	Toolface Azimuth (°)
9,800.00	91.75	180.15	6,614.23	-3,303.38	-8.77	3,303.39	0.00	0.00	0.00	0.00
9,900.00	91.75	180.15	6,611.18	-3,403.34	-9.04	3,403.35	0.00	0.00	0.00	0.00
10,000.00	91.75	180.15	6,608.13	-3,503.29	-9.30	3,503.30	0.00	0.00	0.00	0.00
10,100.00	91.75	180.15	6,605.09	-3,603.24	-9.57	3,603.26	0.00	0.00	0.00	0.00
10,200.00	91.75	180.15	6,602.04	-3,703.20	-9.83	3,703.21	0.00	0.00	0.00	0.00
10,300.00	91.75	180.15	6,598.99	-3,803.15	-10.10	3,803.16	0.00	0.00	0.00	0.00
10,400.00	91.75	180.15	6,595.94	-3,903.10	-10.36	3,903.12	0.00	0.00	0.00	0.00
10,500.00	91.75	180.15	6,592.89	-4,003.05	-10.63	4,003.07	0.00	0.00	0.00	0.00
10,594.70	91.75	180.15	6,590.00	-4,097.71	-10.88	4,097.72	0.00	0.00	0.00	0.00
Total Depth at 10594.70ft										

Plan Annotations

Measured Depth (ft)	Vertical Depth (ft)	Local Coordinates +N/-S (ft)	+E/-W (ft)	Comment
6,222.76	6,222.76	0.00	0.00	KOP - Begin 12.0°/100ft Build at 6222.76ft
6,987.32	6,700.00	-492.02	-1.31	End of Build / Landing Point at 6987.32ft
8,800.00	6,644.73	-2,303.85	-6.12	Hold Angle at 91.75°
10,594.70	6,590.00	-4,097.71	-10.88	Total Depth at 10594.70ft

Vertical Section Information

Angle Type	Target	Azimuth (°)	Origin Type	Origin +N/-S (ft)	+E/-W (ft)	Start TVD (ft)
Target	Conrad 1-11H_PlanA - Rev0_BHL Tgt	180.15	Slot	0.00	0.00	0.00

Survey tool program

From (ft)	To (ft)	Survey/Plan	Survey Tool
0.00	10,594.70	Plan A - Rev 0 Proposal	MWD

Casing Details

Measured Depth (ft)	Vertical Depth (ft)	Name	Casing Diameter (")	Hole Diameter (")
6,987.32	6,700.00	7" Csg	7	8-3/4

Formation Details

Measured Depth (ft)	Vertical Depth (ft)	Name	Lithology	Dip (°)	Dip Direction (°)
1,594.00	1,594.00	Pierre		0.00	
3,594.00	3,594.00	Laramie		0.00	
6,535.99	6,514.00	Sharon Springs		0.00	
6,648.05	6,594.00	Niobrara		0.00	
6,718.28	6,634.00	Niobrara "B"		0.00	
6,833.29	6,680.00	Lower "B"		0.00	
6,958.11	6,700.00	Target		0.00	

HALLIBURTON

Plan Report for Conrad 1-11H - Plan A - Rev 0 Proposal

Targets associated with this wellbore

Target Name	TVD (ft)	+N/-S (ft)	+E/-W (ft)	Shape
Conrad 1-11H_Sec. 11 Lines	0.00	0.00	0.00	Polygon
Conrad 1-11H_PlanA - Rev0_BHL Tgt	6,590.00	-4,097.71	-10.88	Point
Conrad 1-11H_Sec. 11 600' Setbacks	0.00	0.00	0.00	Polygon

HALLIBURTON**North Reference Sheet for Sec. 11-T7N-R62W - Conrad 1-11H - Plan A**

All data is in US Feet unless otherwise stated. Directions and Coordinates are relative to Grid North Reference.

Vertical Depths are relative to KB @ 4954.00ft (Rig KB). Northing and Easting are relative to Conrad 1-11H

Coordinate System is US State Plane 1983, Colorado Northern Zone using datum North American Datum 1983, ellipsoid GRS 1980

Projection method is Lambert Conformal Conic (2 parallel)

Central Meridian is -105.50°, Longitude Origin: 0° 0' 0.000 E°, Latitude Origin: 40° 47' 0.000 N°

False Easting: 3,000,000.00ft, False Northing: 1,000,000.00ft, Scale Reduction: 0.99997480

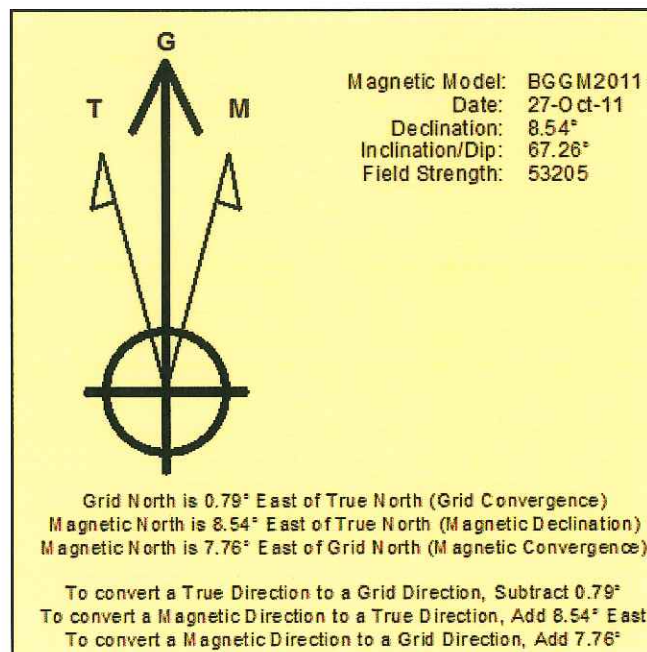
Grid Coordinates of Well: 1,461,720.14 ft N, 3,338,595.28 ft E

Geographical Coordinates of Well: 40° 35' 39.95" N, 104° 16' 50.62" W

Grid Convergence at Surface is: 0.79°

Based upon Minimum Curvature type calculations, at a Measured Depth of 10,594.70ft
the Bottom Hole Displacement is 4,097.72ft in the Direction of 180.15° (Grid).

Magnetic Convergence at surface is: -7.76° (27 October 2011, , BGGM2011)



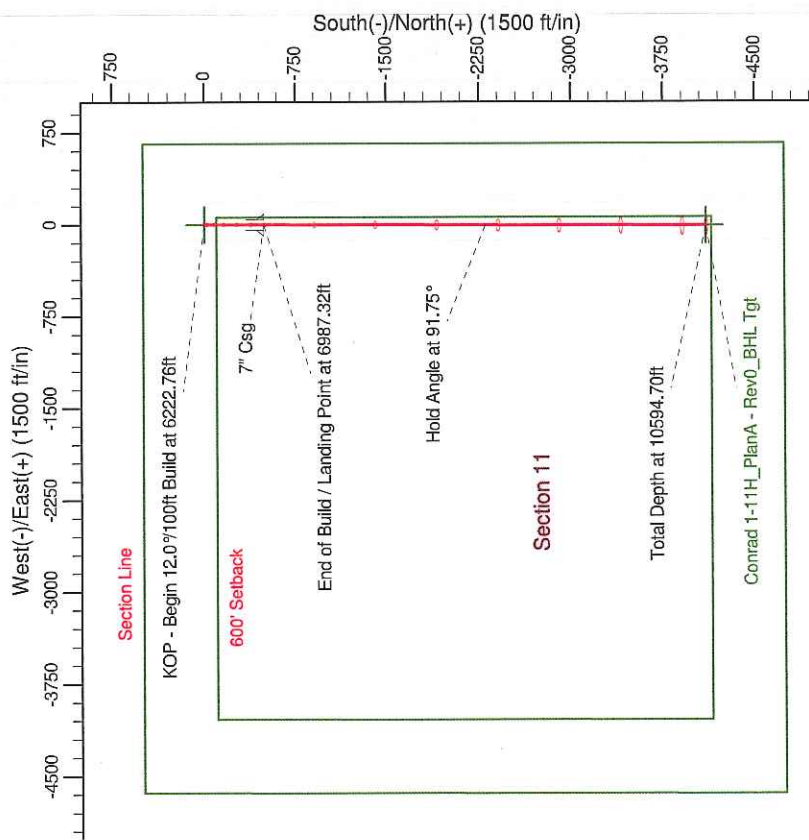
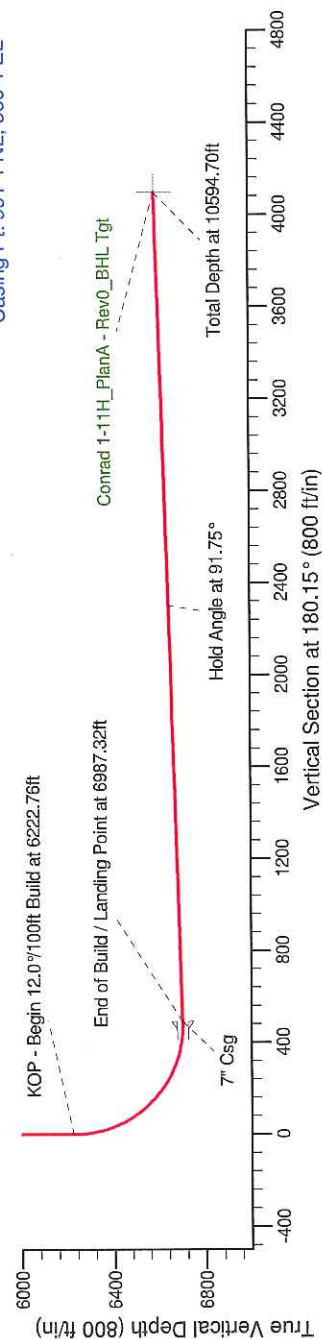
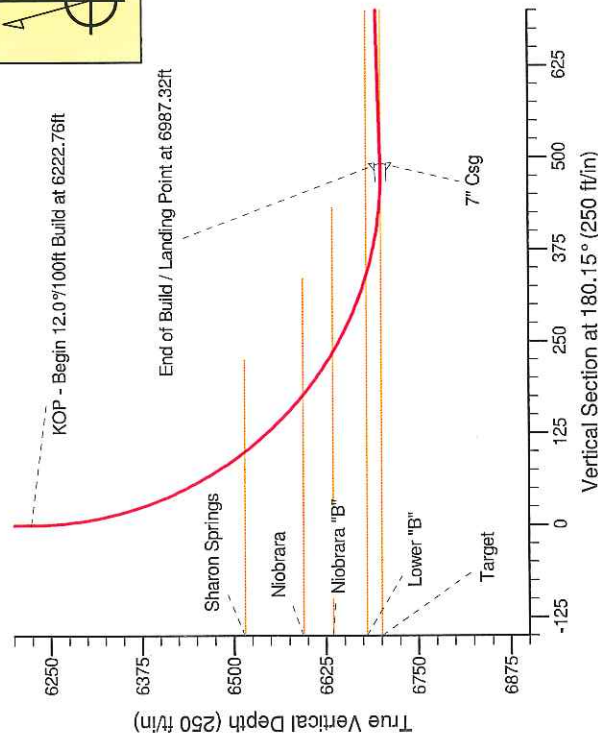
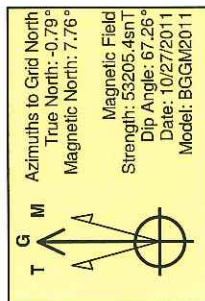
Continental Resources, Inc.

Project: Weld County, CO
 Site: Sec. 11-T7N-R62W
 Well: Conrad 1-11H
 Wellbore: Plan A
 Design: Plan A - Rev 0 Proposal

HALLIBURTON
 Sperry Drilling

SECTION DETAILS

Sec	MD	Inc	Azi	TVD	+N-S	+E-W	D Lag	T Face	V Sec	Target
1	0.00	0.00	0.00	0.00	0.00	0.00	0.00	0.00	0.00	
2	6222.76	0.00	0.00	6222.76	0.00	0.00	0.00	0.00	0.00	
3	6987.32	91.75	180.15	6700.00	-492.02	-1.31	12.00	180.15	492.02	Conrad 1-11H_PlanA - Rev0_BHL Tgt
4	10594.70	91.75	180.15	6590.00	-4097.71	-10.88	0.00	0.00	4097.73	Conrad 1-11H_PlanA - Rev0_BHL Tgt



Surface: 500' FNL, 660' FEL
 Casing Pt: 991' FNL, 660' FEL

BHL: 660' FSL, 660' FEL

WELL DETAILS: Conrad 1-11H	
Ground Level: 4938.00	Longitude
North: 1461720.14	Latitude
East: 3338595.28	104° 35' 39.948 N
Plan: Plan A - Rev 0 Proposal (Conrad 1-11H/Plan A)	104° 16' 50.621 W
Created By: Jay Lantz	Date: 16.09. October 27 2011
Approved:	Date: