

Continental Resources, Inc.

Weld County, CO
Sec. 13-T8N-R62W
Dunn 1-13H

Plan A

Plan: Plan A - Rev 0 Proposal

Sperry Drilling Services Proposal Report

27 October, 2011

Well Coordinates: 1,488,598.73 N, 3,339,883.90 E (40° 40' 05.35" N, 104° 16' 29.10" W)
Ground Level: 5,032.00 ft

Local Coordinate Origin:	Centered on Well Dunn 1-13H
Viewing Datum:	KB @ 5048.00ft (Rig KB)
TVDs to System:	N
North Reference:	Grid
Unit System:	API - US Survey Feet - Custom
Geodetic Scale Factor Applied	
Version: 2003.16 Build: 431	

HALLIBURTON

HALLIBURTON**Plan Report for Dunn 1-13H - Plan A - Rev 0 Proposal**

Measured Depth (ft)	Inclination (°)	Azimuth (°)	Vertical Depth (ft)	+N/-S (ft)	+E/-W (ft)	Vertical Section (ft)	Dogleg Rate (°/100ft)	Build Rate (°/100ft)	Turn Rate (°/100ft)	Toolface Azimuth (°)
0.00	0.00	0.00	0.00	0.00	0.00	0.00	0.00	0.00	0.00	0.00
100.00	0.00	0.00	100.00	0.00	0.00	0.00	0.00	0.00	0.00	0.00
200.00	0.00	0.00	200.00	0.00	0.00	0.00	0.00	0.00	0.00	0.00
300.00	0.00	0.00	300.00	0.00	0.00	0.00	0.00	0.00	0.00	0.00
400.00	0.00	0.00	400.00	0.00	0.00	0.00	0.00	0.00	0.00	0.00
500.00	0.00	0.00	500.00	0.00	0.00	0.00	0.00	0.00	0.00	0.00
600.00	0.00	0.00	600.00	0.00	0.00	0.00	0.00	0.00	0.00	0.00
700.00	0.00	0.00	700.00	0.00	0.00	0.00	0.00	0.00	0.00	0.00
778.00	0.00	0.00	778.00	0.00	0.00	0.00	0.00	0.00	0.00	0.00
Pierre										
800.00	0.00	0.00	800.00	0.00	0.00	0.00	0.00	0.00	0.00	0.00
900.00	0.00	0.00	900.00	0.00	0.00	0.00	0.00	0.00	0.00	0.00
1,000.00	0.00	0.00	1,000.00	0.00	0.00	0.00	0.00	0.00	0.00	0.00
1,100.00	0.00	0.00	1,100.00	0.00	0.00	0.00	0.00	0.00	0.00	0.00
1,200.00	0.00	0.00	1,200.00	0.00	0.00	0.00	0.00	0.00	0.00	0.00
1,300.00	0.00	0.00	1,300.00	0.00	0.00	0.00	0.00	0.00	0.00	0.00
1,400.00	0.00	0.00	1,400.00	0.00	0.00	0.00	0.00	0.00	0.00	0.00
1,500.00	0.00	0.00	1,500.00	0.00	0.00	0.00	0.00	0.00	0.00	0.00
1,600.00	0.00	0.00	1,600.00	0.00	0.00	0.00	0.00	0.00	0.00	0.00
1,700.00	0.00	0.00	1,700.00	0.00	0.00	0.00	0.00	0.00	0.00	0.00
1,800.00	0.00	0.00	1,800.00	0.00	0.00	0.00	0.00	0.00	0.00	0.00
1,900.00	0.00	0.00	1,900.00	0.00	0.00	0.00	0.00	0.00	0.00	0.00
2,000.00	0.00	0.00	2,000.00	0.00	0.00	0.00	0.00	0.00	0.00	0.00
2,100.00	0.00	0.00	2,100.00	0.00	0.00	0.00	0.00	0.00	0.00	0.00
2,200.00	0.00	0.00	2,200.00	0.00	0.00	0.00	0.00	0.00	0.00	0.00
2,300.00	0.00	0.00	2,300.00	0.00	0.00	0.00	0.00	0.00	0.00	0.00
2,400.00	0.00	0.00	2,400.00	0.00	0.00	0.00	0.00	0.00	0.00	0.00
2,500.00	0.00	0.00	2,500.00	0.00	0.00	0.00	0.00	0.00	0.00	0.00
2,600.00	0.00	0.00	2,600.00	0.00	0.00	0.00	0.00	0.00	0.00	0.00
2,700.00	0.00	0.00	2,700.00	0.00	0.00	0.00	0.00	0.00	0.00	0.00
2,800.00	0.00	0.00	2,800.00	0.00	0.00	0.00	0.00	0.00	0.00	0.00
2,900.00	0.00	0.00	2,900.00	0.00	0.00	0.00	0.00	0.00	0.00	0.00
3,000.00	0.00	0.00	3,000.00	0.00	0.00	0.00	0.00	0.00	0.00	0.00
3,100.00	0.00	0.00	3,100.00	0.00	0.00	0.00	0.00	0.00	0.00	0.00
3,200.00	0.00	0.00	3,200.00	0.00	0.00	0.00	0.00	0.00	0.00	0.00
3,300.00	0.00	0.00	3,300.00	0.00	0.00	0.00	0.00	0.00	0.00	0.00
3,400.00	0.00	0.00	3,400.00	0.00	0.00	0.00	0.00	0.00	0.00	0.00
3,500.00	0.00	0.00	3,500.00	0.00	0.00	0.00	0.00	0.00	0.00	0.00
3,600.00	0.00	0.00	3,600.00	0.00	0.00	0.00	0.00	0.00	0.00	0.00
3,700.00	0.00	0.00	3,700.00	0.00	0.00	0.00	0.00	0.00	0.00	0.00
3,726.00	0.00	0.00	3,726.00	0.00	0.00	0.00	0.00	0.00	0.00	0.00
Laramie										
3,800.00	0.00	0.00	3,800.00	0.00	0.00	0.00	0.00	0.00	0.00	0.00
3,900.00	0.00	0.00	3,900.00	0.00	0.00	0.00	0.00	0.00	0.00	0.00
4,000.00	0.00	0.00	4,000.00	0.00	0.00	0.00	0.00	0.00	0.00	0.00
4,100.00	0.00	0.00	4,100.00	0.00	0.00	0.00	0.00	0.00	0.00	0.00
4,200.00	0.00	0.00	4,200.00	0.00	0.00	0.00	0.00	0.00	0.00	0.00
4,300.00	0.00	0.00	4,300.00	0.00	0.00	0.00	0.00	0.00	0.00	0.00
4,400.00	0.00	0.00	4,400.00	0.00	0.00	0.00	0.00	0.00	0.00	0.00
4,500.00	0.00	0.00	4,500.00	0.00	0.00	0.00	0.00	0.00	0.00	0.00
4,600.00	0.00	0.00	4,600.00	0.00	0.00	0.00	0.00	0.00	0.00	0.00
4,700.00	0.00	0.00	4,700.00	0.00	0.00	0.00	0.00	0.00	0.00	0.00
4,800.00	0.00	0.00	4,800.00	0.00	0.00	0.00	0.00	0.00	0.00	0.00
4,900.00	0.00	0.00	4,900.00	0.00	0.00	0.00	0.00	0.00	0.00	0.00
5,000.00	0.00	0.00	5,000.00	0.00	0.00	0.00	0.00	0.00	0.00	0.00
5,100.00	0.00	0.00	5,100.00	0.00	0.00	0.00	0.00	0.00	0.00	0.00
5,200.00	0.00	0.00	5,200.00	0.00	0.00	0.00	0.00	0.00	0.00	0.00
5,300.00	0.00	0.00	5,300.00	0.00	0.00	0.00	0.00	0.00	0.00	0.00

Plan Report for Dunn 1-13H - Plan A - Rev 0 Proposal

Measured Depth (ft)	Inclination (°)	Azimuth (°)	Vertical Depth (ft)	+N-S (ft)	+E-W (ft)	Vertical Section (ft)	Dogleg Rate (°/100ft)	Build Rate (°/100ft)	Turn Rate (°/100ft)	Toolface Azimuth (°)
5,400.00	0.00	0.00	5,400.00	0.00	0.00	0.00	0.00	0.00	0.00	0.00
5,500.00	0.00	0.00	5,500.00	0.00	0.00	0.00	0.00	0.00	0.00	0.00
5,600.00	0.00	0.00	5,600.00	0.00	0.00	0.00	0.00	0.00	0.00	0.00
5,700.00	0.00	0.00	5,700.00	0.00	0.00	0.00	0.00	0.00	0.00	0.00
5,800.00	0.00	0.00	5,800.00	0.00	0.00	0.00	0.00	0.00	0.00	0.00
5,900.00	0.00	0.00	5,900.00	0.00	0.00	0.00	0.00	0.00	0.00	0.00
6,000.00	0.00	0.00	6,000.00	0.00	0.00	0.00	0.00	0.00	0.00	0.00
6,100.00	0.00	0.00	6,100.00	0.00	0.00	0.00	0.00	0.00	0.00	0.00
6,200.00	0.00	0.00	6,200.00	0.00	0.00	0.00	0.00	0.00	0.00	0.00
6,231.54	0.00	0.00	6,231.54	0.00	0.00	0.00	0.00	0.00	0.00	0.00
KOP - Begin 12.0°/100ft Build at 6231.54ft										
6,300.00	8.22	179.13	6,299.77	-4.90	0.07	4.90	12.00	12.00	0.00	179.13
6,400.00	20.22	179.13	6,396.53	-29.41	0.44	29.41	12.00	12.00	0.00	0.00
6,500.00	32.22	179.13	6,486.08	-73.50	1.11	73.50	12.00	12.00	0.00	0.00
6,573.49	41.03	179.13	6,545.00	-117.29	1.77	117.30	12.00	12.00	0.00	0.00
Sharon Springs										
6,600.00	44.22	179.13	6,564.50	-135.24	2.04	135.25	12.00	12.00	0.00	0.00
6,644.65	49.57	179.13	6,595.00	-167.82	2.54	167.84	12.00	12.00	0.00	0.00
Niobrara										
6,700.00	56.22	179.13	6,628.38	-211.93	3.20	211.96	12.00	12.00	0.00	0.00
6,733.47	60.23	179.13	6,646.00	-240.38	3.63	240.41	12.00	12.00	0.00	0.00
Niobrara "B"										
6,800.00	68.22	179.13	6,674.91	-300.23	4.54	300.27	12.00	12.00	0.00	0.00
6,842.84	73.36	179.13	6,689.00	-340.67	5.15	340.71	12.00	12.00	0.00	0.00
Lower "B"										
6,900.00	80.22	179.13	6,702.06	-396.28	5.99	396.32	12.00	12.00	0.00	0.00
6,979.39	89.74	179.13	6,709.00	-475.26	7.18	475.32	12.00	12.00	0.00	0.00
Target										
6,981.75	90.02	179.13	6,709.00	-477.62	7.22	477.67	11.99	11.99	0.00	0.00
End of Build / Landing Point at 6981.75ft - 7" Csg										
7,000.00	90.02	179.13	6,709.00	-495.87	7.49	495.92	0.00	0.00	0.00	0.00
7,100.00	90.02	179.13	6,708.95	-595.86	9.00	595.92	0.00	0.00	0.00	0.00
7,200.00	90.02	179.13	6,708.91	-695.85	10.51	695.92	0.00	0.00	0.00	0.00
7,300.00	90.02	179.13	6,708.87	-795.83	12.02	795.92	0.00	0.00	0.00	0.00
7,400.00	90.02	179.13	6,708.82	-895.82	13.54	895.92	0.00	0.00	0.00	0.00
7,500.00	90.02	179.13	6,708.78	-995.81	15.05	995.92	0.00	0.00	0.00	0.00
7,600.00	90.02	179.13	6,708.74	-1,095.80	16.56	1,095.92	0.00	0.00	0.00	0.00
7,700.00	90.02	179.13	6,708.69	-1,195.79	18.07	1,195.92	0.00	0.00	0.00	0.00
7,800.00	90.02	179.13	6,708.65	-1,295.78	19.58	1,295.92	0.00	0.00	0.00	0.00
7,900.00	90.02	179.13	6,708.60	-1,395.77	21.09	1,395.92	0.00	0.00	0.00	0.00
8,000.00	90.02	179.13	6,708.56	-1,495.75	22.60	1,495.92	0.00	0.00	0.00	0.00
8,100.00	90.02	179.13	6,708.52	-1,595.74	24.11	1,595.92	0.00	0.00	0.00	0.00
8,200.00	90.02	179.13	6,708.47	-1,695.73	25.62	1,695.92	0.00	0.00	0.00	0.00
8,300.00	90.02	179.13	6,708.43	-1,795.72	27.13	1,795.92	0.00	0.00	0.00	0.00
8,400.00	90.02	179.13	6,708.39	-1,895.71	28.64	1,895.92	0.00	0.00	0.00	0.00
8,500.00	90.02	179.13	6,708.34	-1,995.70	30.15	1,995.92	0.00	0.00	0.00	0.00
8,600.00	90.02	179.13	6,708.30	-2,095.69	31.66	2,095.92	0.00	0.00	0.00	0.00
8,700.00	90.02	179.13	6,708.26	-2,195.67	33.18	2,195.92	0.00	0.00	0.00	0.00
8,800.00	90.02	179.13	6,708.21	-2,295.66	34.69	2,295.92	0.00	0.00	0.00	0.00
8,900.00	90.02	179.13	6,708.17	-2,395.65	36.20	2,395.92	0.00	0.00	0.00	0.00
9,000.00	90.02	179.13	6,708.13	-2,495.64	37.71	2,495.92	0.00	0.00	0.00	0.00
9,100.00	90.02	179.13	6,708.08	-2,595.63	39.22	2,595.92	0.00	0.00	0.00	0.00
9,200.00	90.02	179.13	6,708.04	-2,695.62	40.73	2,695.92	0.00	0.00	0.00	0.00
9,300.00	90.02	179.13	6,708.00	-2,795.61	42.24	2,795.92	0.00	0.00	0.00	0.00
9,400.00	90.02	179.13	6,707.95	-2,895.59	43.75	2,895.92	0.00	0.00	0.00	0.00
9,500.00	90.02	179.13	6,707.91	-2,995.58	45.26	2,995.92	0.00	0.00	0.00	0.00
9,600.00	90.02	179.13	6,707.86	-3,095.57	46.77	3,095.92	0.00	0.00	0.00	0.00
9,700.00	90.02	179.13	6,707.82	-3,195.56	48.28	3,195.92	0.00	0.00	0.00	0.00
9,800.00	90.02	179.13	6,707.78	-3,295.55	49.79	3,295.92	0.00	0.00	0.00	0.00

Plan Report for Dunn 1-13H - Plan A - Rev 0 Proposal

Measured Depth (ft)	Inclination (°)	Azimuth (°)	Vertical Depth (ft)	+N/-S (ft)	+E/-W (ft)	Vertical Section (ft)	Dogleg Rate (°/100ft)	Build Rate (°/100ft)	Turn Rate (°/100ft)	Toolface Azimuth (°)
9,900.00	90.02	179.13	6,707.73	-3,395.54	51.30	3,395.92	0.00	0.00	0.00	0.00
10,000.00	90.02	179.13	6,707.69	-3,495.53	52.82	3,495.92	0.00	0.00	0.00	0.00
10,100.00	90.02	179.13	6,707.65	-3,595.51	54.33	3,595.92	0.00	0.00	0.00	0.00
10,200.00	90.02	179.13	6,707.60	-3,695.50	55.84	3,695.92	0.00	0.00	0.00	0.00
10,300.00	90.02	179.13	6,707.56	-3,795.49	57.35	3,795.92	0.00	0.00	0.00	0.00
10,400.00	90.02	179.13	6,707.52	-3,895.48	58.86	3,895.92	0.00	0.00	0.00	0.00
10,500.00	90.02	179.13	6,707.47	-3,995.47	60.37	3,995.92	0.00	0.00	0.00	0.00
10,600.00	90.02	179.13	6,707.43	-4,095.46	61.88	4,095.92	0.00	0.00	0.00	0.00
10,700.00	90.02	179.13	6,707.39	-4,195.45	63.39	4,195.92	0.00	0.00	0.00	0.00
10,800.00	90.02	179.13	6,707.34	-4,295.43	64.90	4,295.92	0.00	0.00	0.00	0.00
10,900.00	90.02	179.13	6,707.30	-4,395.42	66.41	4,395.92	0.00	0.00	0.00	0.00
11,000.00	90.02	179.13	6,707.25	-4,495.41	67.92	4,495.92	0.00	0.00	0.00	0.00
11,100.00	90.02	179.13	6,707.21	-4,595.40	69.43	4,595.92	0.00	0.00	0.00	0.00
11,200.00	90.02	179.13	6,707.17	-4,695.39	70.94	4,695.92	0.00	0.00	0.00	0.00
11,300.00	90.02	179.13	6,707.12	-4,795.38	72.46	4,795.92	0.00	0.00	0.00	0.00
11,400.00	90.02	179.13	6,707.08	-4,895.37	73.97	4,895.92	0.00	0.00	0.00	0.00
11,500.00	90.02	179.13	6,707.04	-4,995.35	75.48	4,995.92	0.00	0.00	0.00	0.00
Hold Angle at 90.02°										
11,600.00	90.02	179.13	6,706.99	-5,095.34	76.99	5,095.92	0.00	0.00	0.00	0.00
11,700.00	90.02	179.13	6,706.95	-5,195.33	78.50	5,195.92	0.00	0.00	0.00	0.00
11,800.00	90.02	179.13	6,706.91	-5,295.32	80.01	5,295.92	0.00	0.00	0.00	0.00
11,900.00	90.02	179.13	6,706.86	-5,395.31	81.52	5,395.92	0.00	0.00	0.00	0.00
12,000.00	90.02	179.13	6,706.82	-5,495.30	83.03	5,495.92	0.00	0.00	0.00	0.00
12,100.00	90.02	179.13	6,706.78	-5,595.29	84.54	5,595.92	0.00	0.00	0.00	0.00
12,200.00	90.02	179.13	6,706.73	-5,695.27	86.05	5,695.92	0.00	0.00	0.00	0.00
12,300.00	90.02	179.13	6,706.69	-5,795.26	87.56	5,795.92	0.00	0.00	0.00	0.00
12,400.00	90.02	179.13	6,706.65	-5,895.25	89.07	5,895.92	0.00	0.00	0.00	0.00
12,500.00	90.02	179.13	6,706.60	-5,995.24	90.58	5,995.92	0.00	0.00	0.00	0.00
12,600.00	90.02	179.13	6,706.56	-6,095.23	92.10	6,095.92	0.00	0.00	0.00	0.00
12,700.00	90.02	179.13	6,706.51	-6,195.22	93.61	6,195.92	0.00	0.00	0.00	0.00
12,800.00	90.02	179.13	6,706.47	-6,295.21	95.12	6,295.92	0.00	0.00	0.00	0.00
12,900.00	90.02	179.13	6,706.43	-6,395.19	96.63	6,395.92	0.00	0.00	0.00	0.00
13,000.00	90.02	179.13	6,706.38	-6,495.18	98.14	6,495.92	0.00	0.00	0.00	0.00
13,100.00	90.02	179.13	6,706.34	-6,595.17	99.65	6,595.92	0.00	0.00	0.00	0.00
13,200.00	90.02	179.13	6,706.30	-6,695.16	101.16	6,695.92	0.00	0.00	0.00	0.00
13,300.00	90.02	179.13	6,706.25	-6,795.15	102.67	6,795.92	0.00	0.00	0.00	0.00
13,400.00	90.02	179.13	6,706.21	-6,895.14	104.18	6,895.92	0.00	0.00	0.00	0.00
13,500.00	90.02	179.13	6,706.17	-6,995.13	105.69	6,995.92	0.00	0.00	0.00	0.00
13,600.00	90.02	179.13	6,706.12	-7,095.11	107.20	7,095.92	0.00	0.00	0.00	0.00
13,700.00	90.02	179.13	6,706.08	-7,195.10	108.71	7,195.92	0.00	0.00	0.00	0.00
13,800.00	90.02	179.13	6,706.04	-7,295.09	110.22	7,295.92	0.00	0.00	0.00	0.00
13,900.00	90.02	179.13	6,705.99	-7,395.08	111.73	7,395.92	0.00	0.00	0.00	0.00
14,000.00	90.02	179.13	6,705.95	-7,495.07	113.25	7,495.92	0.00	0.00	0.00	0.00
14,100.00	90.02	179.13	6,705.91	-7,595.06	114.76	7,595.92	0.00	0.00	0.00	0.00
14,200.00	90.02	179.13	6,705.86	-7,695.05	116.27	7,695.92	0.00	0.00	0.00	0.00
14,300.00	90.02	179.13	6,705.82	-7,795.03	117.78	7,795.92	0.00	0.00	0.00	0.00
14,400.00	90.02	179.13	6,705.77	-7,895.02	119.29	7,895.92	0.00	0.00	0.00	0.00
14,500.00	90.02	179.13	6,705.73	-7,995.01	120.80	7,995.92	0.00	0.00	0.00	0.00
14,600.00	90.02	179.13	6,705.69	-8,095.00	122.31	8,095.92	0.00	0.00	0.00	0.00
14,700.00	90.02	179.13	6,705.64	-8,194.99	123.82	8,195.92	0.00	0.00	0.00	0.00
14,800.00	90.02	179.13	6,705.60	-8,294.98	125.33	8,295.92	0.00	0.00	0.00	0.00
14,900.00	90.02	179.13	6,705.56	-8,394.97	126.84	8,395.92	0.00	0.00	0.00	0.00
15,000.00	90.02	179.13	6,705.51	-8,494.95	128.35	8,495.92	0.00	0.00	0.00	0.00
15,100.00	90.02	179.13	6,705.47	-8,594.94	129.86	8,595.92	0.00	0.00	0.00	0.00
15,200.00	90.02	179.13	6,705.43	-8,694.93	131.37	8,695.92	0.00	0.00	0.00	0.00
15,300.00	90.02	179.13	6,705.38	-8,794.92	132.89	8,795.92	0.00	0.00	0.00	0.00
15,400.00	90.02	179.13	6,705.34	-8,894.91	134.40	8,895.92	0.00	0.00	0.00	0.00
15,500.00	90.02	179.13	6,705.30	-8,994.90	135.91	8,995.92	0.00	0.00	0.00	0.00
15,600.00	90.02	179.13	6,705.25	-9,094.89	137.42	9,095.92	0.00	0.00	0.00	0.00

Plan Report for Dunn 1-13H - Plan A - Rev 0 Proposal

Measured Depth (ft)	Inclination (°)	Azimuth (°)	Vertical Depth (ft)	+N/-S (ft)	+E/-W (ft)	Vertical Section (ft)	Dogleg Rate (°/100ft)	Build Rate (°/100ft)	Turn Rate (°/100ft)	Toolface Azimuth (°)
15,700.00	90.02	179.13	6,705.21	-9,194.87	138.93	9,195.92	0.00	0.00	0.00	0.00
15,800.00	90.02	179.13	6,705.16	-9,294.86	140.44	9,295.92	0.00	0.00	0.00	0.00
15,900.00	90.02	179.13	6,705.12	-9,394.85	141.95	9,395.92	0.00	0.00	0.00	0.00
16,000.00	90.02	179.13	6,705.08	-9,494.84	143.46	9,495.92	0.00	0.00	0.00	0.00
16,100.00	90.02	179.13	6,705.03	-9,594.83	144.97	9,595.92	0.00	0.00	0.00	0.00
16,178.42	90.02	179.13	6,705.00	-9,673.24	146.16	9,674.34	0.00	0.00	0.00	0.00
Total Depth at 16178.42ft										

Plan Annotations

Measured Depth (ft)	Vertical Depth (ft)	Local Coordinates		Comment
		+N/-S (ft)	+E/-W (ft)	
6,231.54	6,231.54	0.00	0.00	KOP - Begin 12.0°/100ft Build at 6231.54ft
6,981.75	6,709.00	-477.62	7.22	End of Build / Landing Point at 6981.75ft
11,500.00	6,707.04	-4,995.35	75.48	Hold Angle at 90.02°
16,178.42	6,705.00	-9,673.24	146.16	Total Depth at 16178.42ft

Vertical Section Information

Angle Type	Target	Azimuth (°)	Origin Type	Origin +N/-S (ft)	Origin +E/-W (ft)	Start TVD (ft)
Target	Dunn 1-13H_PlanA - Rev0_BHL Tgt	179.13	Slot	0.00	0.00	0.00

Survey tool program

From (ft)	To (ft)	Survey/Plan	Survey Tool
0.00	16,178.42	Plan A - Rev 0 Proposal	MWD

Casing Details

Measured Depth (ft)	Vertical Depth (ft)	Name	Casing Diameter (")	Hole Diameter (")
6,981.75	6,709.00	7" Csg	7	8-3/4

Formation Details

Measured Depth (ft)	Vertical Depth (ft)	Name	Lithology	Dip (°)	Dip Direction (°)
778.00	778.00	Pierre		0.00	
3,726.00	3,726.00	Laramie		0.00	
6,573.49	6,545.00	Sharon Springs		0.00	
6,644.65	6,595.00	Niobrara		0.00	
6,733.47	6,646.00	Niobrara "B"		0.00	
6,842.84	6,689.00	Lower "B"		0.00	
6,979.39	6,709.00	Target		0.00	

Plan Report for Dunn 1-13H - Plan A - Rev 0 Proposal

Targets associated with this wellbore

Target Name	TVD (ft)	+N/-S (ft)	+E/-W (ft)	Shape
Dunn 1-13H_600' Setbacks	0.00	0.00	0.00	Polygon
Dunn 1-13H_Sec. 24 Lines	0.00	0.00	0.00	Polygon
Dunn 1-13H_PlanA - Rev0_BHL Tgt	6,705.00	-9,673.24	146.16	Point
Dunn 1-13H_Sec. 13 Lines	0.00	0.00	0.00	Polygon

HALLIBURTON**North Reference Sheet for Sec. 13-T8N-R62W - Dunn 1-13H - Plan A**

All data is in US Feet unless otherwise stated. Directions and Coordinates are relative to Grid North Reference.

Vertical Depths are relative to KB @ 5048.00ft (Rig KB). Northing and Easting are relative to Dunn 1-13H

Coordinate System is US State Plane 1983, Colorado Northern Zone using datum North American Datum 1983, ellipsoid GRS 1980

Projection method is Lambert Conformal Conic (2 parallel)

Central Meridian is -105.50°, Longitude Origin: 0° 0' 0.000 E°, Latitude Origin: 40° 47' 0.000 N°

False Easting: 3,000,000.00ft, False Northing: 1,000,000.00ft, Scale Reduction: 0.99998334

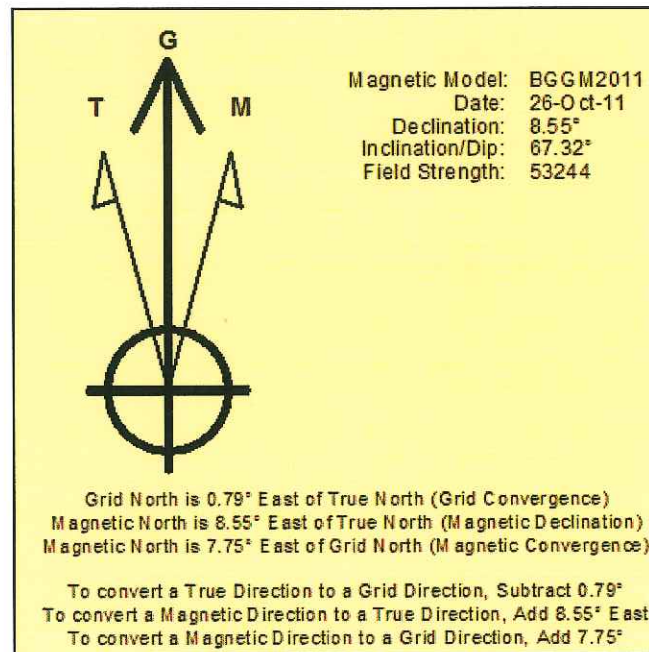
Grid Coordinates of Well: 1,488,598.73 ft N, 3,339,883.90 ft E

Geographical Coordinates of Well: 40° 40' 05.35" N, 104° 16' 29.10" W

Grid Convergence at Surface is: 0.79°

Based upon Minimum Curvature type calculations, at a Measured Depth of 16,178.42ft
the Bottom Hole Displacement is 9,674.34ft in the Direction of 179.13° (Grid).

Magnetic Convergence at surface is: -7.75° (26 October 2011, , BGGM2011)



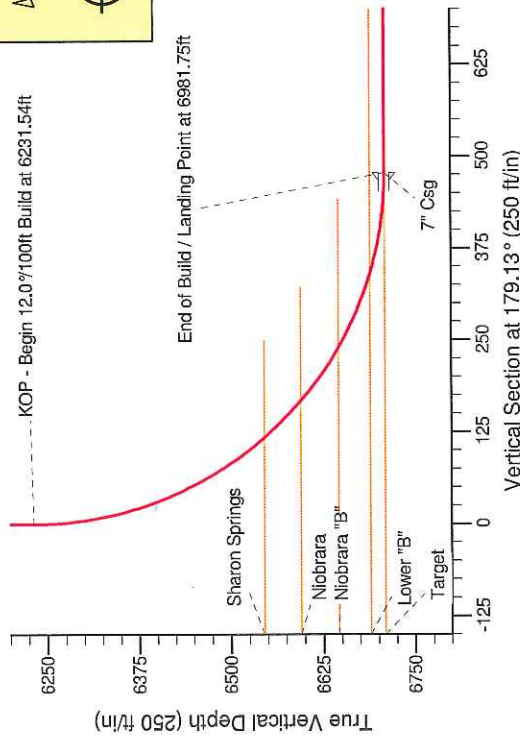
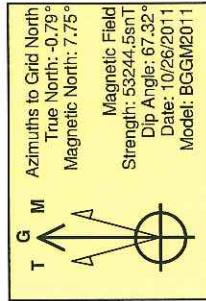
Continental Resources, Inc.

Project: Weld County, CO
 Site: Sec. 13-T8N-R62W
 Well: Dunn 1-13H
 Wellbore: Plan A
 Design: Plan A - Rev 0 Proposal

HALLIBURTON
 Sperry Drilling

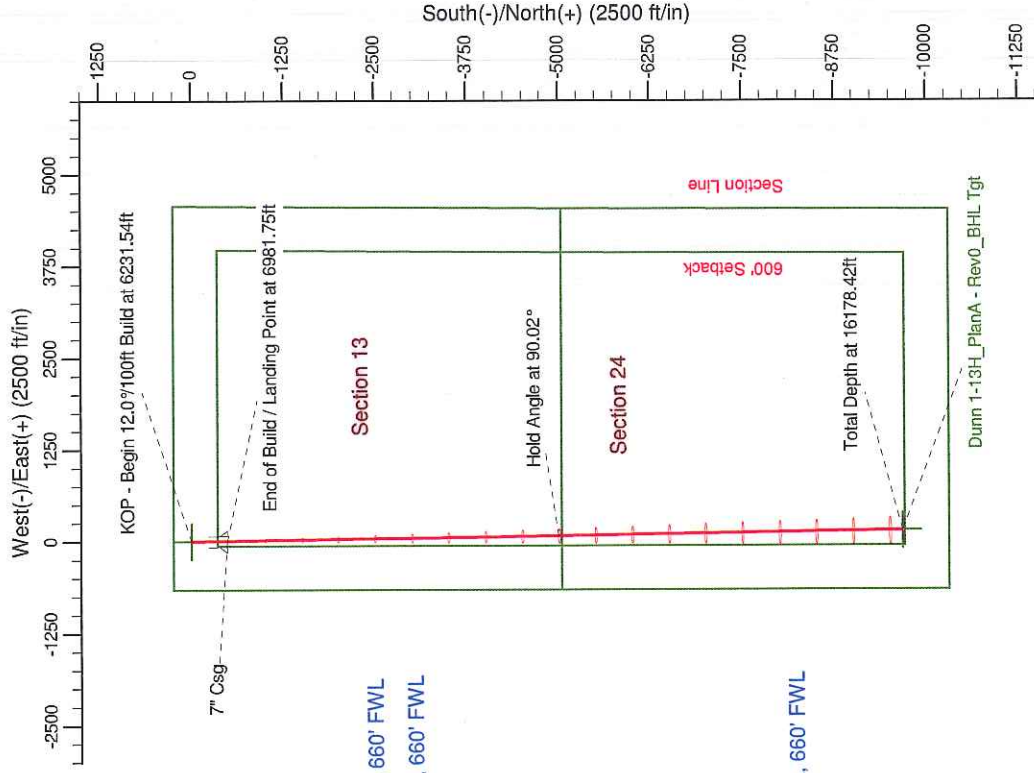
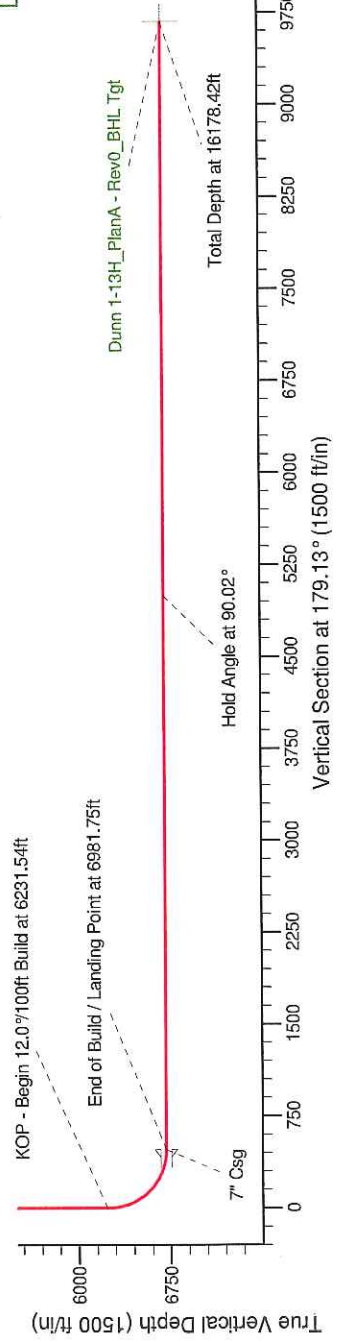
SECTION DETAILS

Sec	MD	Inc	Azi	TVD	+N/-S	+E/-W	Dleg	TFace	VSec	Target
1	0.00	0.00	0.00	0.00	0.00	0.00	0.00	0.00	0.00	
2	6231.54	0.00	0.00	6231.54	0.00	0.00	0.00	0.00	0.00	
3	6981.75	90.02	179.13	6709.00	-477.62	7.22	12.00	179.13	477.67	
4	16178.42	90.02	179.13	6705.00	-9673.24	146.16	0.00	0.00	9674.34	Dunn 1-13H_PlanA - Rev0_BHL_Tgt



Surface: 250' FNL, 660' FWL
 Casing Pt: 728' FNL, 660' FWL

BHL: 660' FSL, 660' FWL



WELL DETAILS: Dunn 1-13H

Ground Level: 5032.00
 Northing: 1488598.73
 Easting: 3339883.90
 Longitude: 104° 16' 29.104 W
 Latitude: 40° 40' 5.347 N

Plan: Plan A - Rev 0 Proposal (Dunn 1-13H/Plan A)

Created By: Jay Lantz Date: 16/26, October 27 2011

Approved: Date: