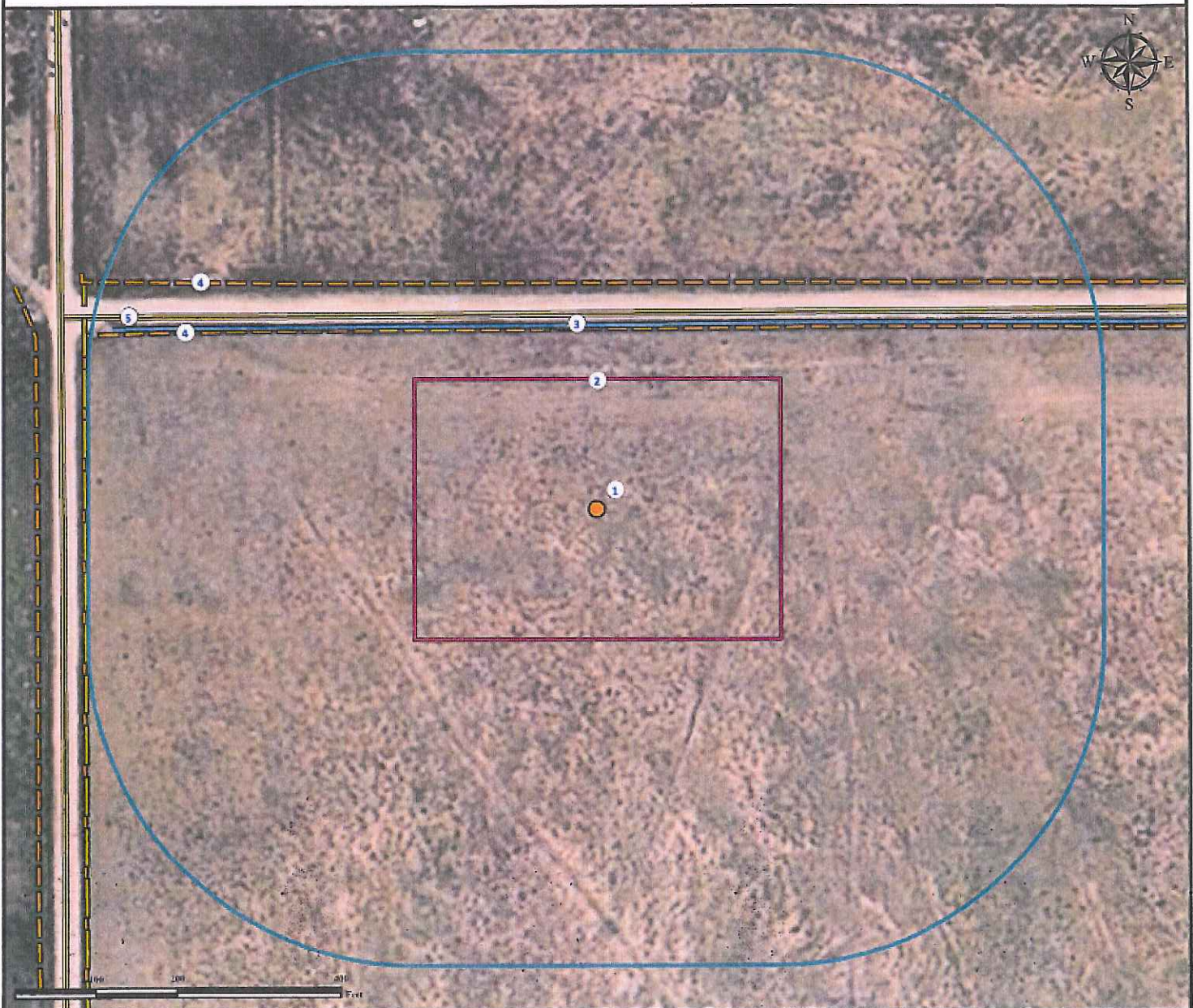


Location Drawing

D U N N 1 - 1 3 H

NW¼ NW¼ SECTION 13, TOWNSHIP 8 NORTH, RANGE 62 WEST OF THE 6TH PRINCIPAL MERIDIAN



- | | |
|----------------------------------|------------------------------------|
| 1. Proposed Well DUNN 1-13H. | 4. Fences are ±222' N and ±304' N. |
| 2. Operational Disturbance Area. | 5. County road 94 is ±240' N. |
| 3. Ditch is ±223' N. | |

Legend

- | | | | |
|---------------|------------------|-------------|-------|
| Proposed Well | Disturbance Area | Public Road | Ditch |
| 400' Radius | Fence | Powerline | |

Reference Location

**** All Measurements are Made from Reference Well DUNN 1-13H ****
 Lat: 40.668152° Long: -104.274751° (NAD83)
 Elevation: 5032 Feet

Surface Use: Rangeland



Use our resources to find yours!
www.petro-fs.com
 (303) 928-7128

Field Date: 09/27/2011
 Drafting Date: 09/29/2011
 Drafter: HMB
 Checked By: BHF

Data Sources:
 - Aerial courtesy of NAIP (2009)

Prepared for:

