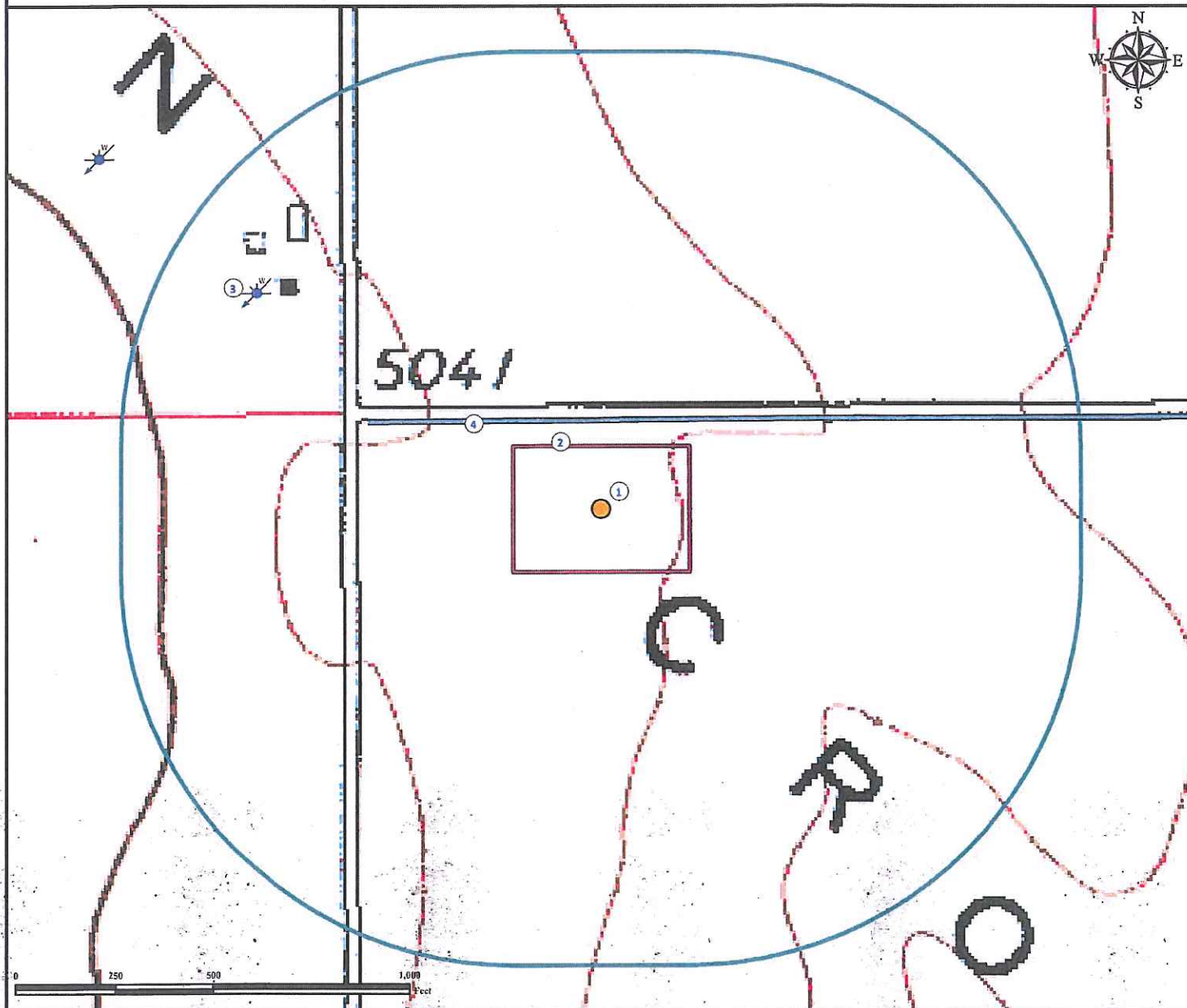


Hydrology Map

DUNN 1-13H

NW¼ NW¼ SECTION 13, TOWNSHIP 8 NORTH, RANGE 62 WEST OF THE 6TH PRINCIPAL MERIDIAN



1. Proposed Well DUNN 1-13H.
2. Operational Disturbance Area.
3. Water Well (#281123) is ±1041' NW. Feature not in this location per field verify.
4. Ditch is ±223' N.

Legend

- Proposed Well
- Disturbance Area
- Ditch
- Water Well
- 1000' Radius

Reference Location

** All Measurements are Made from Reference Well DUNN 1-13H **

Lat: 40.668152° Long:-104.274751° (NAD83)
Elevation: 5032 Feet



Use our resources to find yours!
www.petro-fs.com
(303) 928-7128

Field Date: 09/27/2011
Drafting Date: 09/29/2011
Drafter: HMB
Checked By: BHF

Data Sources:
- TOPO courtesy of USGS
- Water Wells courtesy of C'DOWR

Prepared for:

