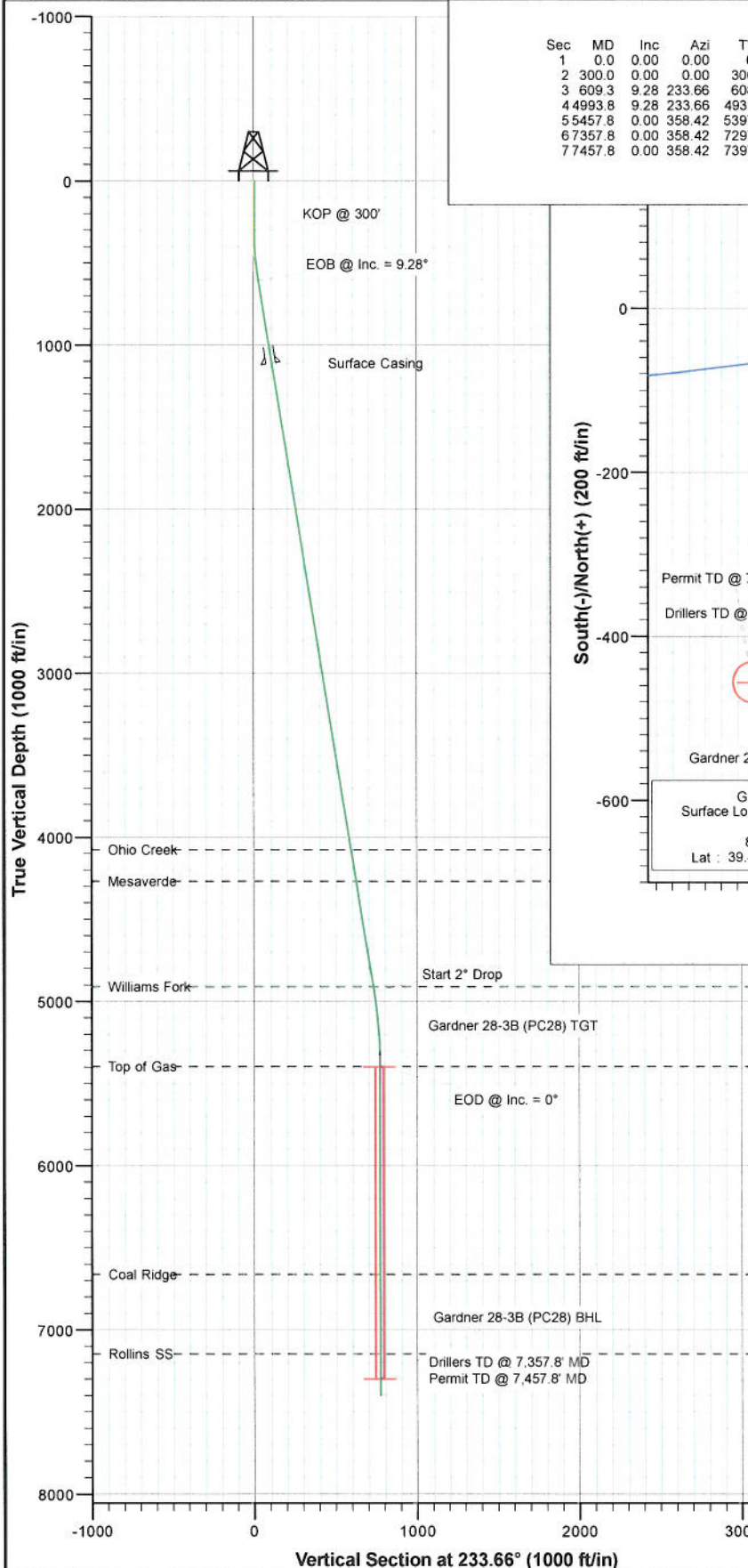


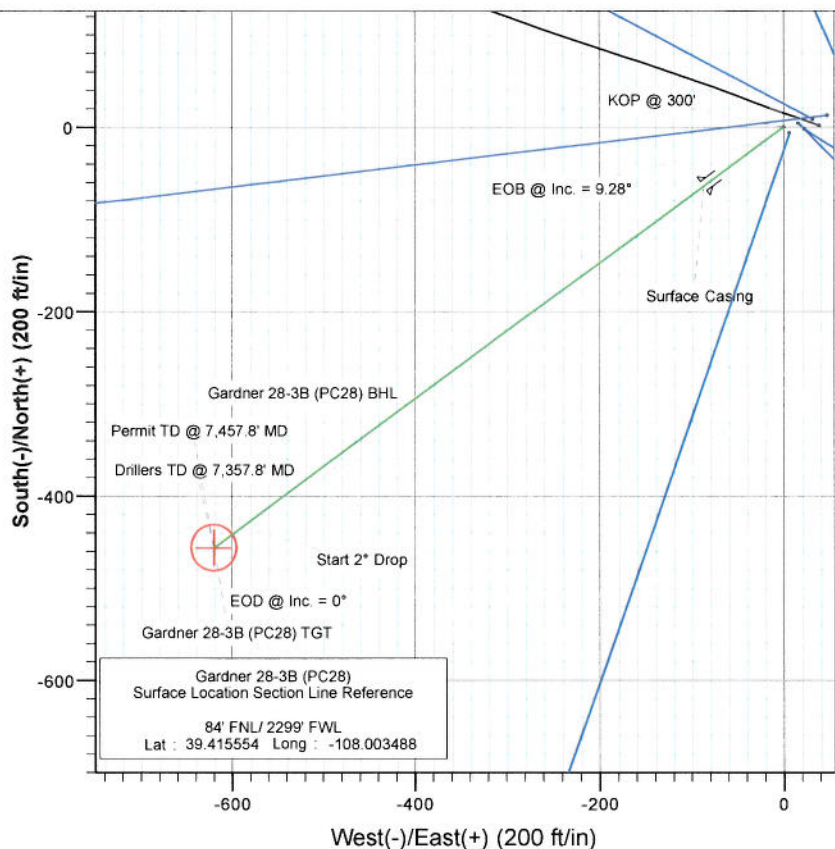


Project: S. Piceance (Parachute)
 Site: NENW Sec28-T7S-R95W (PC-28)
 Well: Gardner 28-3B (PC28)
 Wellbore: DD
 Plan: Plan #3



SECTION DETAILS

Sec	MD	Inc	Azi	TVD	+N/-S	+E/-W	Dleg	TFace	Vsect	Target
1	0.0	0.00	0.00	0.0	0.0	0.0	0.00	0.00	0.0	
2	300.0	0.00	0.00	300.0	0.0	0.0	0.00	0.00	0.0	
3	609.3	9.28	233.66	608.0	-14.8	-20.1	3.00	233.66	25.0	
4	4993.8	9.28	233.66	4935.0	-433.8	-589.7	0.00	0.00	732.0	
5	5457.8	0.00	358.42	5397.0	-456.0	-619.9	2.00	180.00	769.5	Gardner 28-3B (PC28) TGT
6	67357.8	0.00	358.42	7297.0	-456.0	-619.9	0.00	358.42	769.5	Gardner 28-3B (PC28) BHL
7	7457.8	0.00	358.42	7397.0	-456.0	-619.9	0.00	358.42	769.5	



FORMATION TOP DETAILS

TVDPath	MDPath	Formation
4077.0	4124.4	Ohio Creek
4270.0	4319.9	Mesaverde
4912.0	4970.4	Williams Fork
5397.0	5457.8	Top of Gas
6663.0	6723.8	Coal Ridge
7147.0	7207.8	Rollins SS



Azimuths to True North
 Magnetic North: 10.39°

Magnetic Field
 Strength: 52290.7nT
 Dip Angle: 65.70°
 Date: 11/18/2010
 Model: IGRF200510

Plan #3
 Gardner 28-3B (PC28)
 115XXX: SC

KBE @ 6442.0ft (Original Well Elev)
 North American Datum 1983
 Well Gardner 28-3B (PC28), True North

Target	Azimuth	Origin Type	N/S		
Gardner 28-3B (PC28) BHL	233.66	Spot	0.0		
Name	TVD	+N/-S	+E/-W	Latitude	Longitude
Gardner 28-3B (PC28) TGT	5397.0	-456.0	-619.9	39.414302	-108.005682
Gardner 28-3B (PC28) BHL	7297.0	-456.0	-619.9	39.414302	-108.005682

Planning Report

Database:	USA EDM 5000 Multi Users DB	Local Co-ordinate Reference:	Well Gardner 28-3B (PC28)
Company:	EnCana Oil & Gas (USA) Inc	TVD Reference:	KBE @ 6442.0ft (Original Well Elev)
Project:	S. Piceance (Parachute)	MD Reference:	KBE @ 6442.0ft (Original Well Elev)
Site:	NENW Sec28-T7S-R95W (PC28)	North Reference:	True
Well:	Gardner 28-3B (PC28)	Survey Calculation Method:	Minimum Curvature
Wellbore:	DD		
Design:	Plan #3		

Project	S. Piceance (Parachute), Garfield County, CO		
Map System:	US State Plane 1983	System Datum:	Mean Sea Level
Geo Datum:	North American Datum 1983		
Map Zone:	Colorado Central Zone		

Site	NENW Sec28-T7S-R95W (PC28)				
Site Position:		Northing:	1,585,994.80 ft	Latitude:	39.415560
From:	Lat/Long	Easting:	2,292,840.18 ft	Longitude:	-108.003350
Position Uncertainty:	0.0 ft	Slot Radius:	13.200 in	Grid Convergence:	-1.58 °

Well	Gardner 28-3B (PC28)					
Well Position	+N/-S	0.0 ft	Northing:	1,585,993.68 ft	Latitude:	39.415554
	+E/-W	0.0 ft	Easting:	2,292,801.14 ft	Longitude:	-108.003488
Position Uncertainty		0.0 ft	Wellhead Elevation:	ft	Ground Level:	6,420.0 ft

Wellbore	DD				
Magnetics	Model Name	Sample Date	Declination (°)	Dip Angle (°)	Field Strength (nT)
	IGRF200510	11/18/2010	10.39	65.70	52,291

Design	Plan #3			
Audit Notes:				
Version:	Phase:	PLAN	Tie On Depth:	0.0
Vertical Section:	Depth From (TVD) (ft)	+N/-S (ft)	+E/-W (ft)	Direction (°)
	0.0	0.0	0.0	233.66

Plan Sections										
Measured Depth (ft)	Inclination (°)	Azimuth (°)	Vertical Depth (ft)	+N/-S (ft)	+E/-W (ft)	Dogleg Rate (°/100ft)	Build Rate (°/100ft)	Turn Rate (°/100ft)	TFO (°)	Target
0.0	0.00	0.00	0.0	0.0	0.0	0.00	0.00	0.00	0.00	
300.0	0.00	0.00	300.0	0.0	0.0	0.00	0.00	0.00	0.00	
609.3	9.28	233.66	608.0	-14.8	-20.1	3.00	3.00	0.00	233.66	
4,993.8	9.28	233.66	4,935.0	-433.8	-589.7	0.00	0.00	0.00	0.00	
5,457.8	0.00	358.42	5,397.0	-456.0	-619.9	2.00	-2.00	0.00	180.00	Gardner 28-3B (PC28)
7,357.8	0.00	358.42	7,297.0	-456.0	-619.9	0.00	0.00	0.00	358.42	Gardner 28-3B (PC28)
7,457.8	0.00	358.42	7,397.0	-456.0	-619.9	0.00	0.00	0.00	358.42	

Planning Report

Database: USA EDM 5000 Multi Users DB
 Company: EnCana Oil & Gas (USA) Inc
 Project: S. Piceance (Parachute)
 Site: NENW Sec28-T7S-R95W (PC28)
 Well: Gardner 28-3B (PC28)
 Wellbore: DD
 Design: Plan #3

Local Co-ordinate Reference: Well Gardner 28-3B (PC28)
 TVD Reference: KBE @ 6442.0ft (Original Well Elev)
 MD Reference: KBE @ 6442.0ft (Original Well Elev)
 North Reference: True
 Survey Calculation Method: Minimum Curvature

Planned Survey

Measured Depth (ft)	Inclination (°)	Azimuth (°)	Vertical Depth (ft)	+N/-S (ft)	+E/-W (ft)	Vertical Section (ft)	Dogleg Rate (°/100ft)	Build Rate (°/100ft)	Comments / Formations
0.0	0.00	0.00	0.0	0.0	0.0	0.0	0.00	0.00	
100.0	0.00	0.00	100.0	0.0	0.0	0.0	0.00	0.00	
200.0	0.00	0.00	200.0	0.0	0.0	0.0	0.00	0.00	
300.0	0.00	0.00	300.0	0.0	0.0	0.0	0.00	0.00	KOP @ 300'
400.0	3.00	233.66	400.0	-1.6	-2.1	2.6	3.00	3.00	
500.0	6.00	233.66	499.6	-6.2	-8.4	10.5	3.00	3.00	
609.3	9.28	233.66	608.0	-14.8	-20.1	25.0	3.00	3.00	EOB @ Inc = 9 28°
700.0	9.28	233.66	697.5	-23.5	-31.9	39.6	0.00	0.00	
800.0	9.28	233.66	796.2	-33.0	-44.9	55.7	0.00	0.00	
900.0	9.28	233.66	894.8	-42.6	-57.9	71.9	0.00	0.00	
1,000.0	9.28	233.66	993.5	-52.1	-70.9	88.0	0.00	0.00	
1,100.0	9.28	233.66	1,092.2	-61.7	-83.9	104.1	0.00	0.00	
1,120.0	9.28	233.66	1,112.0	-63.6	-86.5	107.3	0.00	0.00	Surface Casing
1,200.0	9.28	233.66	1,190.9	-71.3	-96.9	120.2	0.00	0.00	
1,300.0	9.28	233.66	1,289.6	-80.8	-109.9	136.4	0.00	0.00	
1,400.0	9.28	233.66	1,388.3	-90.4	-122.8	152.5	0.00	0.00	
1,500.0	9.28	233.66	1,487.0	-99.9	-135.8	168.6	0.00	0.00	
1,600.0	9.28	233.66	1,585.7	-109.5	-148.8	184.8	0.00	0.00	
1,700.0	9.28	233.66	1,684.4	-119.0	-161.8	200.9	0.00	0.00	
1,800.0	9.28	233.66	1,783.1	-128.6	-174.8	217.0	0.00	0.00	
1,900.0	9.28	233.66	1,881.8	-138.1	-187.8	233.1	0.00	0.00	
2,000.0	9.28	233.66	1,980.4	-147.7	-200.8	249.3	0.00	0.00	
2,100.0	9.28	233.66	2,079.1	-157.3	-213.8	265.4	0.00	0.00	
2,200.0	9.28	233.66	2,177.8	-166.8	-226.8	281.5	0.00	0.00	
2,300.0	9.28	233.66	2,276.5	-176.4	-239.7	297.6	0.00	0.00	
2,400.0	9.28	233.66	2,375.2	-185.9	-252.7	313.8	0.00	0.00	
2,500.0	9.28	233.66	2,473.9	-195.5	-265.7	329.9	0.00	0.00	
2,600.0	9.28	233.66	2,572.6	-205.0	-278.7	346.0	0.00	0.00	
2,700.0	9.28	233.66	2,671.3	-214.6	-291.7	362.1	0.00	0.00	
2,800.0	9.28	233.66	2,770.0	-224.2	-304.7	378.3	0.00	0.00	
2,900.0	9.28	233.66	2,868.7	-233.7	-317.7	394.4	0.00	0.00	
3,000.0	9.28	233.66	2,967.4	-243.3	-330.7	410.5	0.00	0.00	
3,100.0	9.28	233.66	3,066.1	-252.8	-343.7	426.6	0.00	0.00	
3,200.0	9.28	233.66	3,164.7	-262.4	-356.7	442.8	0.00	0.00	
3,300.0	9.28	233.66	3,263.4	-271.9	-369.6	458.9	0.00	0.00	
3,400.0	9.28	233.66	3,362.1	-281.5	-382.6	475.0	0.00	0.00	
3,500.0	9.28	233.66	3,460.8	-291.0	-395.6	491.1	0.00	0.00	
3,600.0	9.28	233.66	3,559.5	-300.6	-408.6	507.3	0.00	0.00	
3,700.0	9.28	233.66	3,658.2	-310.2	-421.6	523.4	0.00	0.00	
3,800.0	9.28	233.66	3,756.9	-319.7	-434.6	539.5	0.00	0.00	
3,900.0	9.28	233.66	3,855.6	-329.3	-447.6	555.7	0.00	0.00	
4,000.0	9.28	233.66	3,954.3	-338.8	-460.6	571.8	0.00	0.00	
4,100.0	9.28	233.66	4,053.0	-348.4	-473.6	587.9	0.00	0.00	
4,124.4	9.28	233.66	4,077.0	-350.7	-476.7	591.8	0.00	0.00	Ohio Creek
4,200.0	9.28	233.66	4,151.7	-357.9	-486.6	604.0	0.00	0.00	
4,300.0	9.28	233.66	4,250.3	-367.5	-499.5	620.2	0.00	0.00	
4,319.9	9.28	233.66	4,270.0	-369.4	-502.1	623.4	0.00	0.00	Mesaverde
4,400.0	9.28	233.66	4,349.0	-377.0	-512.5	636.3	0.00	0.00	
4,500.0	9.28	233.66	4,447.7	-386.6	-525.5	652.4	0.00	0.00	
4,600.0	9.28	233.66	4,546.4	-396.2	-538.5	668.5	0.00	0.00	
4,700.0	9.28	233.66	4,645.1	-405.7	-551.5	684.7	0.00	0.00	
4,800.0	9.28	233.66	4,743.8	-415.3	-564.5	700.8	0.00	0.00	

Planning Report

Database: USA EDM 5000 Multi Users DB
Company: EnCana Oil & Gas (USA) Inc
Project: S. Piceance (Parachute)
Site: NENW Sec28-T7S-R95W (PC28)
Well: Gardner 28-3B (PC28)
Wellbore: DD
Design: Plan #3

Local Co-ordinate Reference: Well Gardner 28-3B (PC28)
TVD Reference: KBE @ 6442.0ft (Original Well Elev)
MD Reference: KBE @ 6442.0ft (Original Well Elev)
North Reference: True
Survey Calculation Method: Minimum Curvature

Planned Survey

Measured Depth (ft)	Inclination (°)	Azimuth (°)	Vertical Depth (ft)	+N/-S (ft)	+E/-W (ft)	Vertical Section (ft)	Dogleg Rate (°/100ft)	Build Rate (°/100ft)	Comments / Formations
4,900.0	9.28	233.66	4,842.5	-424.8	-577.5	716.9	0.00	0.00	
4,970.4	9.28	233.66	4,912.0	-431.6	-586.6	728.3	0.00	0.00	Williams Fork
4,993.8	9.28	233.66	4,935.0	-433.8	-589.7	732.0	0.00	0.00	Start 2" Drop
5,000.0	9.16	233.66	4,941.2	-434.4	-590.5	733.0	2.00	-2.00	
5,100.0	7.16	233.66	5,040.2	-442.8	-601.9	747.2	2.00	-2.00	
5,200.0	5.16	233.66	5,139.6	-449.1	-610.5	757.9	2.00	-2.00	
5,300.0	3.16	233.66	5,239.3	-453.4	-616.4	765.2	2.00	-2.00	
5,400.0	1.16	233.66	5,339.2	-455.7	-619.4	768.9	2.00	-2.00	
5,457.8	0.00	358.42	5,397.0	-456.0	-619.9	769.5	2.00	-2.00	EOD @ Inc. = 0° - Top of Gas
5,500.0	0.00	358.42	5,439.2	-456.0	-619.9	769.5	0.00	0.00	
5,600.0	0.00	358.42	5,539.2	-456.0	-619.9	769.5	0.00	0.00	
5,700.0	0.00	358.42	5,639.2	-456.0	-619.9	769.5	0.00	0.00	
5,800.0	0.00	358.42	5,739.2	-456.0	-619.9	769.5	0.00	0.00	
5,900.0	0.00	358.42	5,839.2	-456.0	-619.9	769.5	0.00	0.00	
6,000.0	0.00	358.42	5,939.2	-456.0	-619.9	769.5	0.00	0.00	
6,100.0	0.00	358.42	6,039.2	-456.0	-619.9	769.5	0.00	0.00	
6,200.0	0.00	358.42	6,139.2	-456.0	-619.9	769.5	0.00	0.00	
6,300.0	0.00	358.42	6,239.2	-456.0	-619.9	769.5	0.00	0.00	
6,400.0	0.00	358.42	6,339.2	-456.0	-619.9	769.5	0.00	0.00	
6,500.0	0.00	358.42	6,439.2	-456.0	-619.9	769.5	0.00	0.00	
6,600.0	0.00	358.42	6,539.2	-456.0	-619.9	769.5	0.00	0.00	
6,700.0	0.00	358.42	6,639.2	-456.0	-619.9	769.5	0.00	0.00	
6,723.8	0.00	358.42	6,663.0	-456.0	-619.9	769.5	0.00	0.00	Coal Ridge
6,800.0	0.00	358.42	6,739.2	-456.0	-619.9	769.5	0.00	0.00	
6,900.0	0.00	358.42	6,839.2	-456.0	-619.9	769.5	0.00	0.00	
7,000.0	0.00	358.42	6,939.2	-456.0	-619.9	769.5	0.00	0.00	
7,100.0	0.00	358.42	7,039.2	-456.0	-619.9	769.5	0.00	0.00	
7,200.0	0.00	358.42	7,139.2	-456.0	-619.9	769.5	0.00	0.00	
7,207.8	0.00	358.42	7,147.0	-456.0	-619.9	769.5	0.00	0.00	Rollins SS
7,300.0	0.00	358.42	7,239.2	-456.0	-619.9	769.5	0.00	0.00	
7,357.8	0.00	358.42	7,297.0	-456.0	-619.9	769.5	0.00	0.00	Drillers TD @ 7,357.8' MD
7,400.0	0.00	358.42	7,339.2	-456.0	-619.9	769.5	0.00	0.00	
7,457.8	0.00	358.42	7,397.0	-456.0	-619.9	769.5	0.00	0.00	Permit TD @ 7,457.8' MD

Targets

Target Name	Dip Angle (°)	Dip Dir. (°)	TVD (ft)	+N/-S (ft)	+E/-W (ft)	Northing (ft)	Easting (ft)	Latitude	Longitude
- hit/miss target									
- Shape									
Gardner 28-3B (PC28) T	0.00	358.42	5,397.0	-456.0	-619.9	1,585,554.93	2,292,168.95	39.414302	-108.005682
- plan hits target center									
- Circle (radius 25.0)									
Gardner 28-3B (PC28) E	0.00	358.42	7,297.0	-456.0	-619.9	1,585,554.93	2,292,168.95	39.414302	-108.005682
- plan hits target center									
- Circle (radius 25.0)									

Planning Report

Database: USA EDM 5000 Multi Users DB Company: EnCana Oil & Gas (USA) Inc Project: S. Piceance (Parachute) Site: NENW Sec28-T7S-R95W (PC28) Well: Gardner 28-3B (PC28) Wellbore: DD Design: Plan #3	Local Co-ordinate Reference: Well Gardner 28-3B (PC28) TVD Reference: KBE @ 6442.0ft (Original Well Elev) MD Reference: KBE @ 6442.0ft (Original Well Elev) North Reference: True Survey Calculation Method: Minimum Curvature	
--	---	--

Casing Points

Measured Depth (ft)	Vertical Depth (ft)	Name	Casing Diameter (in)	Hole Diameter (in)
1,120.0	1,112.0	Surface Casing	8.625	12.250

Formations

Measured Depth (ft)	Vertical Depth (ft)	Name	Lithology	Dip (°)	Dip Direction (°)
4,124.4	4,077.0	Ohio Creek		0.00	
4,319.9	4,270.0	Mesaverde		0.00	
4,970.4	4,912.0	Williams Fork		0.00	
5,457.8	5,397.0	Top of Gas		0.00	
6,723.8	6,663.0	Coal Ridge		0.00	
7,207.8	7,147.0	Rollins SS		0.00	

Plan Annotations

Measured Depth (ft)	Vertical Depth (ft)	Local Coordinates		Comment
		+N/-S (ft)	+E/-W (ft)	
300.0	300.0	0.0	0.0	KOP @ 300'
609.3	608.0	-14.8	-20.1	EOB @ Inc. = 9.28°
4,993.8	4,935.0	-433.8	-589.7	Start 2" Drop
5,457.8	5,397.0	-456.0	-619.9	EOD @ Inc. = 0°
7,357.8	7,297.0	-456.0	-619.9	Drillers TD @ 7,357.8' MD
7,457.8	7,397.0	-456.0	-619.9	Permit TD @ 7,457.8' MD