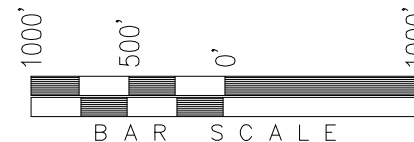


**T2S, R97W, 6th P.M.**

**ExxonMobil Oil Corporation**

WELL LOCATION, PICEANCE CREEK UNIT  
T78X-12G10, LOCATED AS SHOWN IN SE 1/4  
SE 1/4 OF SECTION 12, T2S, R97W, 6th P.M.  
RIO BLANCO COUNTY, COLORADO.



**BASIS OF BEARINGS & BASIS OF ELEVATION**

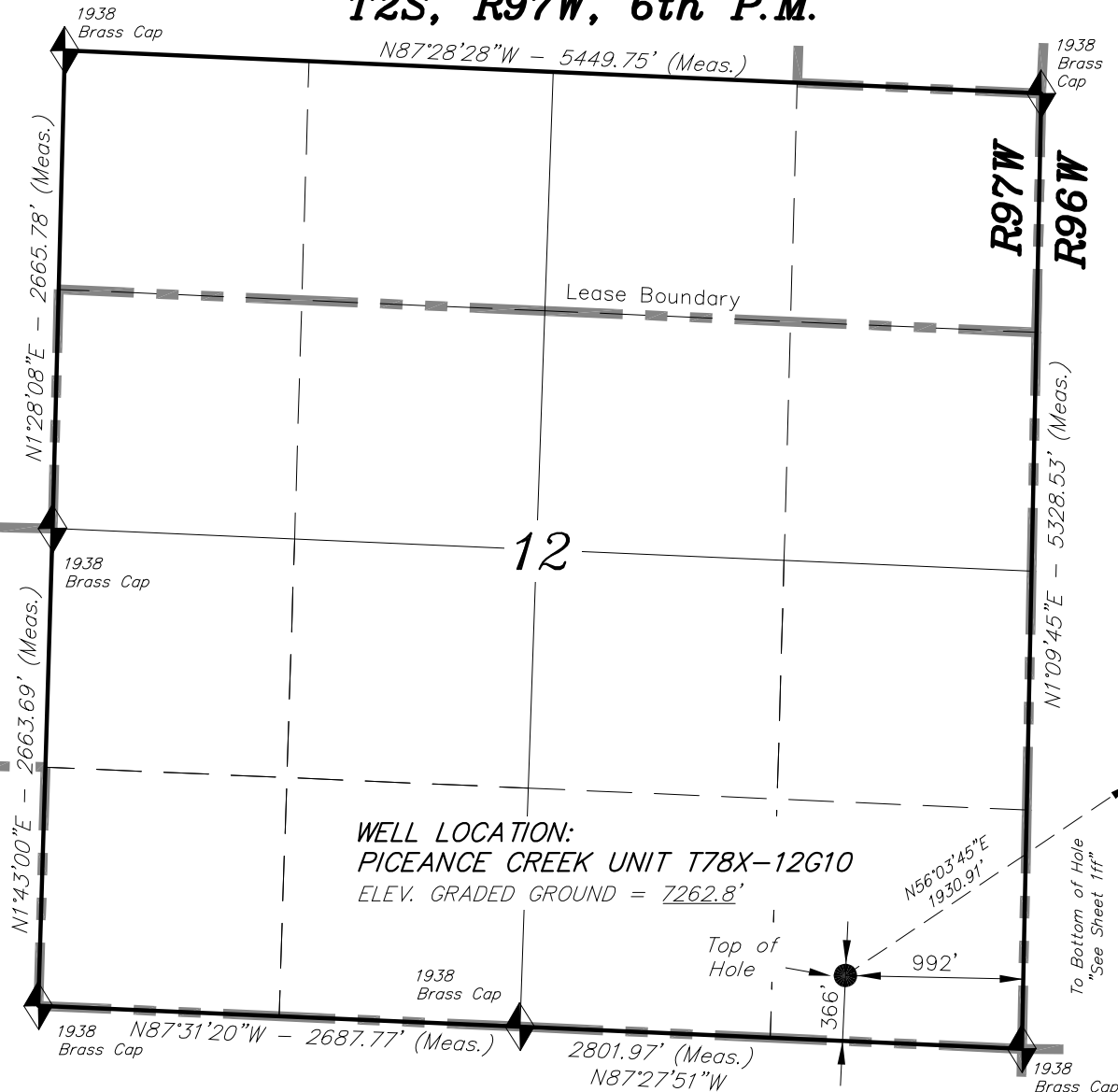
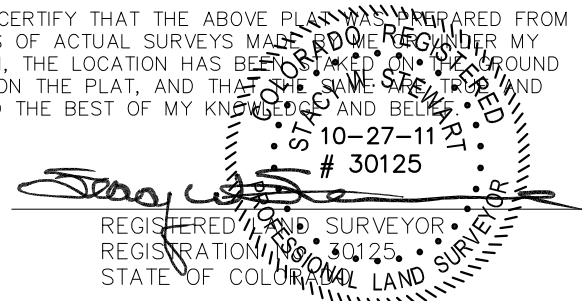
BASIS OF BEARINGS IS A LINE BETWEEN MAGNOLIA & MEYERS TRIANGULATION STATION GRID COORDINATES WHICH IS ASSUMED TO BEAR S82°36'07"E.

BASIS OF ELEVATIONS IS MAGNOLIA TRIANGULATION STATION LOCATED IN THE NW 1/4 OF SECTION 9, T2S, R96W, 6th P.M. REPORTED FROM THE NATIONAL GEODETIC SURVEY AS BEING 7529 FEET (NAVD 88). WE MEASURED IT TO BE 7526.2'

**NOTES:**

1. Well footages are measured at right angles to the Section Lines.
2. Bearings are based on Global Positioning Satellite observations.
3. G.P.S. Operator: Q. MILLER, (PDOP) = 1.6 (06-28-11)

THIS IS TO CERTIFY THAT THE ABOVE PLAT WAS PREPARED FROM FIELD NOTES OF ACTUAL SURVEYS MADE BY ME UNDER MY SUPERVISION, THE LOCATION HAS BEEN SPOKE ON THE GROUND AS SHOWN ON THE PLAT, AND THAT THE SAME ARE TRUE AND CORRECT TO THE BEST OF MY KNOWLEDGE AND BELIEF.



CO-NORTH NAD 83 (SURFACE LOCATION)	
LATITUDE = 39°53'06.40" (39.885111)	
LONGITUDE = 108°13'20.23" (108.222287)	
STATE PLANE COORDINATES	
N: = 1212721.352	E: = 2236176.757
CO-NORTH NAD 27 (SURFACE LOCATION)	
LATITUDE = 39°53'06.50" (39.885138)	
LONGITUDE = 108°13'17.93" (108.221647)	
STATE PLANE COORDINATES	
N: = 212722.386	E: = 1236336.615

FROM SURFACE LOCATION TO NEAREST:	
TOWN/COMMUNITY:	19.5 MILES NE TO MEEKER
UNIT BOUNDARY:	±16,321' SLY TO BOUNDARY
UNIT BOUNDARY:	±15,442' WLY TO BOUNDARY
UNIT BOUNDARY:	S55°W 9,389' TO BOUNDARY
LEASE BOUNDARY:	±366' SLY TO BOUNDARY
LEASE BOUNDARY:	±992' ELY TO BOUNDARY
EXISTING WELL:	S34°W ±89' TO PCU T78X-12G1

**TRI STATE LAND SURVEYING & CONSULTING**

180 NORTH VERNAL AVE. - VERNAL, UTAH 84078  
(435) 781-2501

DATE SURVEYED: 11-06-09	SURVEYED BY: D.G.	SHEET 1f
DATE DRAWN: 12-02-09	DRAWN BY: L.C.S.	
REVISED: 10-27-11 D.COX	SCALE: 1" = 1000'	