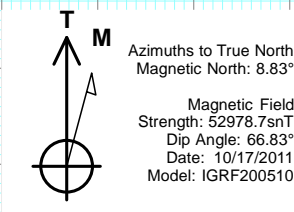
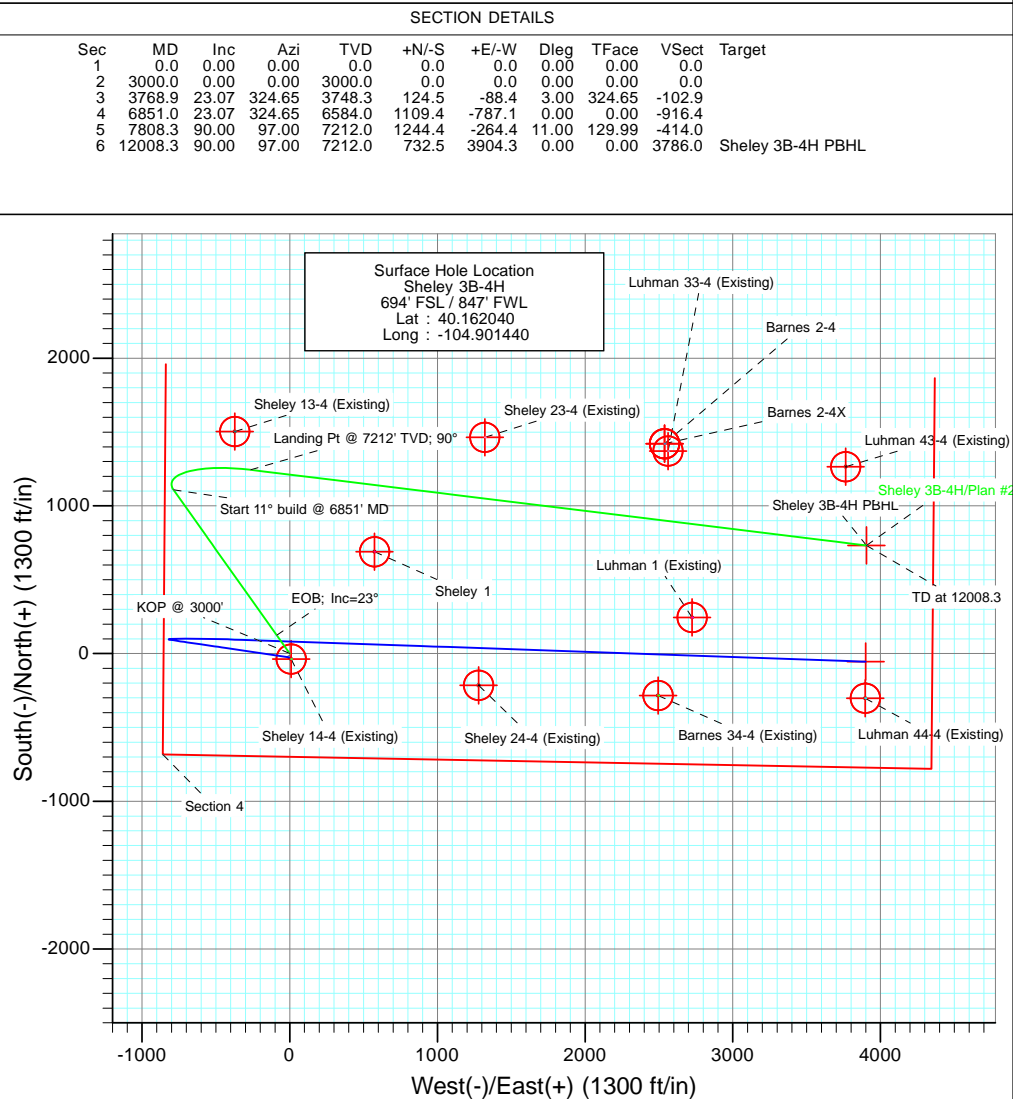
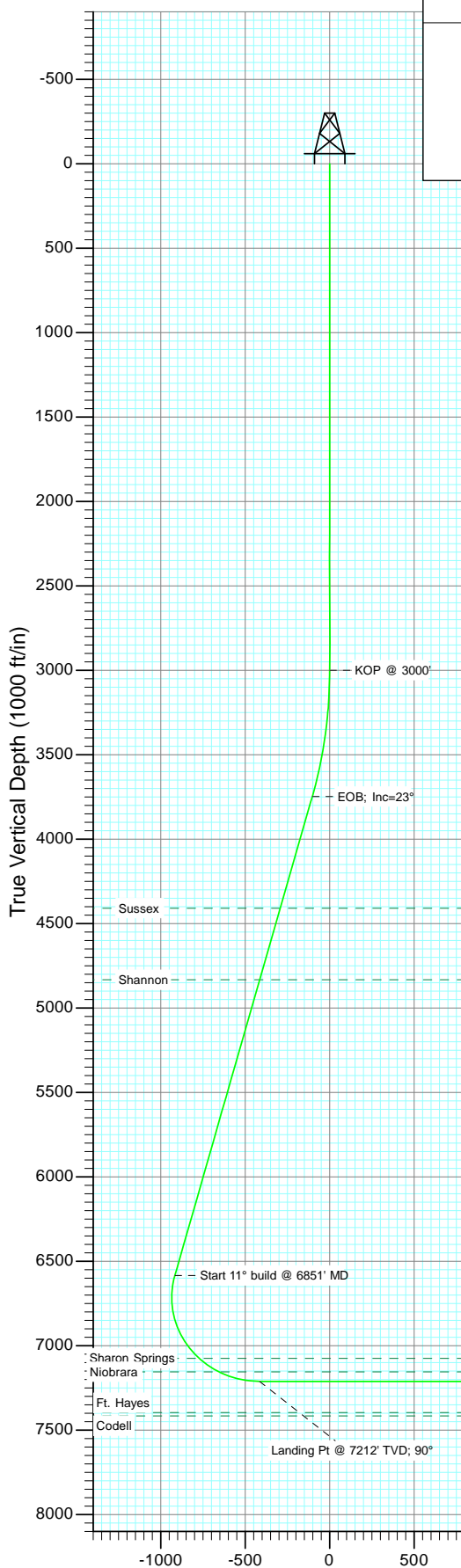
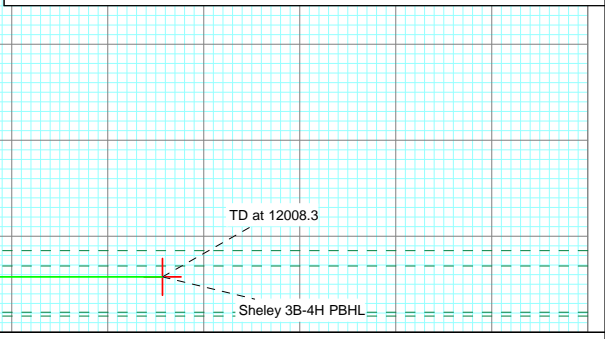




Project: DJ Wattenberg  
Site: SWSW S4-T2N-R67W (Sheley)  
Well: Sheley 3B-4H  
Wellbore: HZ  
Design: Plan #2



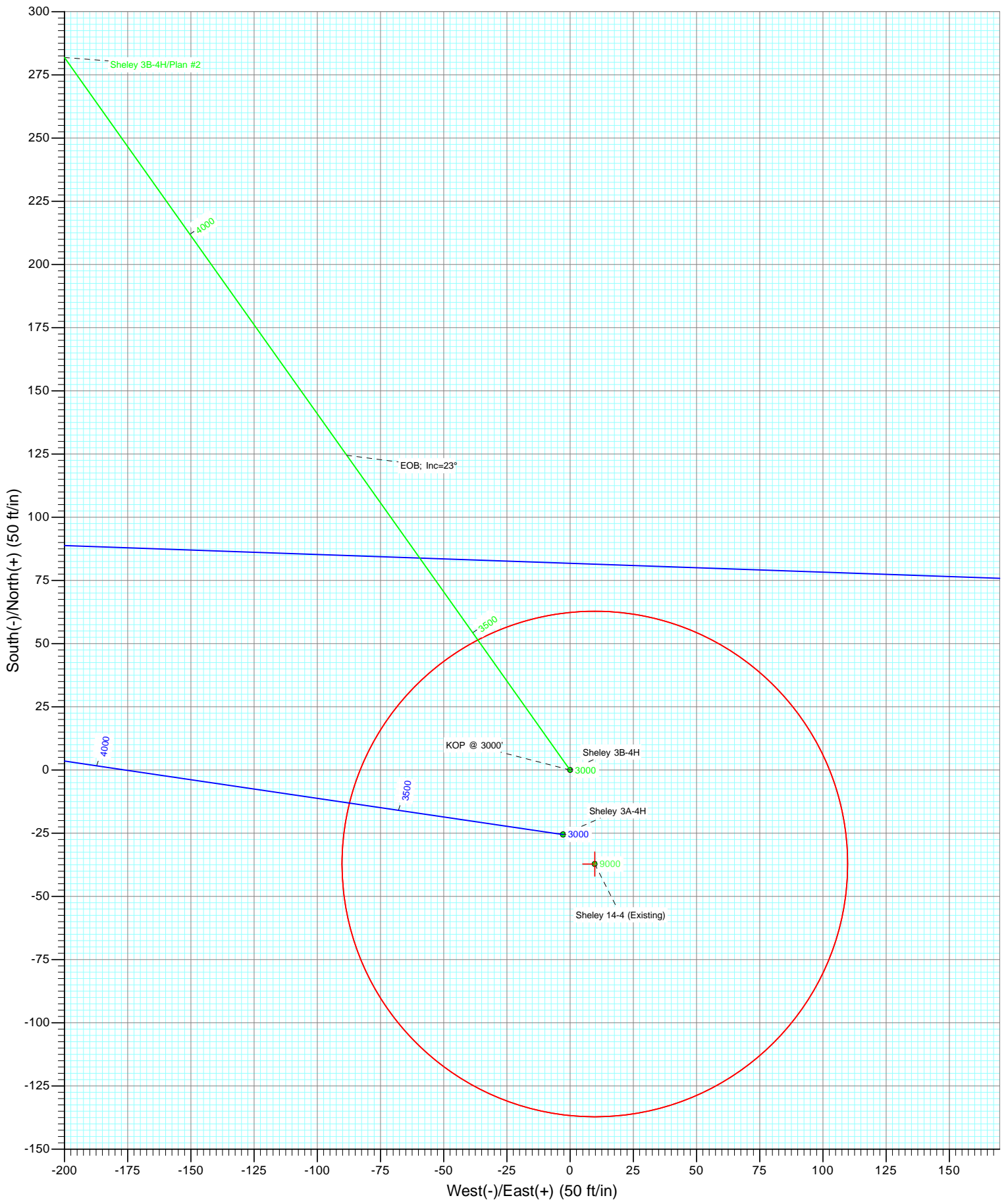
FORMATION TOP DETAILS			
TVDPPath	MDPath	Formation	
4409.0	4487.0	Sussex	
4833.0	4947.9	Shannon	
7075.0	7412.1	Sharon Springs	
7155.0	7556.4	Niobrara	



<div>Plan #2 Sheley 3B-4H 1150xx, LR KBE @ 4325.0ft (Original Well Elev) GL @ +612.0 North American Datum 1983 Well Sheley 3B-4H, True North</div>											
Type User	Target No Target (Freehand)	Azimuth 97.00	Origin Type Slot	N/S 0.0	E/W 0.0	From	TVD 0.0				
Sheley 3B-4H PBHL		TVD 7212.0	+N/-S 732.5	+E/-W 3904.3	Latitude 40.164050	Longitude -104.887470					



Project: DJ Wattenberg  
Site: SWSW S4-T2N-R67W (Sheley)  
Well: Sheley 3B-4H  
Wellbore: HZ  
Design: Plan #2



## Planning Report

<b>Database:</b>	USA EDM 5000 Multi Users DB	<b>Local Co-ordinate Reference:</b>	Well Sheley 3B-4H
<b>Company:</b>	EnCana Oil & Gas (USA) Inc	<b>TVD Reference:</b>	KBE @ 4925.0ft (Original Well Elev)
<b>Project:</b>	DJ Wattenberg	<b>MD Reference:</b>	KBE @ 4925.0ft (Original Well Elev)
<b>Site:</b>	SWSW S4-T2N-R67W (Sheley)	<b>North Reference:</b>	True
<b>Well:</b>	Sheley 3B-4H	<b>Survey Calculation Method:</b>	Minimum Curvature
<b>Wellbore:</b>	HZ		
<b>Design:</b>	Plan #2		

<b>Project</b>	DJ Wattenberg		
<b>Map System:</b>	US State Plane 1983	<b>System Datum:</b>	Mean Sea Level
<b>Geo Datum:</b>	North American Datum 1983		
<b>Map Zone:</b>	Colorado Northern Zone		

Site		SWSW S4-T2N-R67W (Sheley)			
Site Position:		Northing:	1,302,419.89 ft	Latitude:	40.161980
From:	Lat/Long	Easting:	3,167,329.04 ft	Longitude:	-104.901320
Position Uncertainty:	0.0 ft	Slot Radius:	13.200 in	Grid Convergence:	0.39 °

Well	Sheley 3B-4H					
Well Position	+N/-S	0.0 ft	Northing:	1,302,441.52 ft	Latitude:	40.162040
	+E/-W	0.0 ft	Easting:	3,167,295.36 ft	Longitude:	-104.901440
Position Uncertainty		0.0 ft	Wellhead Elevation:	ft	Ground Level:	4,912.0 ft

<b>Wellbore</b>	HZ				
<b>Magnetics</b>	<b>Model Name</b>	<b>Sample Date</b>	<b>Declination (°)</b>	<b>Dip Angle (°)</b>	<b>Field Strength (nT)</b>
	IGRF200510	10/17/2011	8.83	66.83	52,979

<b>Design</b>	Plan #2				
<b>Audit Notes:</b>					
<b>Version:</b>	<b>Phase:</b>	PLAN		<b>Tie On Depth:</b>	0.0
<b>Vertical Section:</b>	<b>Depth From (TVD) (ft)</b>	<b>+N/-S (ft)</b>	<b>+E/-W (ft)</b>	<b>Direction (°)</b>	
	0.0	0.0	0.0	97.00	

<b>Plan Sections</b>										
Measured Depth (ft)	Inclination (°)	Azimuth (°)	Vertical Depth (ft)	+N/-S (ft)	+E/-W (ft)	Dogleg Rate (°/100ft)	Build Rate (°/100ft)	Turn Rate (°/100ft)	TFO (°)	Target
0.0	0.00	0.00	0.0	0.0	0.0	0.00	0.00	0.00	0.00	
3,000.0	0.00	0.00	3,000.0	0.0	0.0	0.00	0.00	0.00	0.00	
3,768.9	23.07	324.65	3,748.3	124.5	-88.4	3.00	3.00	0.00	324.65	
6,851.0	23.07	324.65	6,584.0	1,109.4	-787.1	0.00	0.00	0.00	0.00	
7,808.3	90.00	97.00	7,212.0	1,244.4	-264.4	11.00	6.99	13.83	129.99	
12,008.3	90.00	97.00	7,212.0	732.5	3,904.3	0.00	0.00	0.00	0.00	Sheley 3B-4H PBHL

# Planning Report

<b>Database:</b>	USA EDM 5000 Multi Users DB	<b>Local Co-ordinate Reference:</b>	Well Sheley 3B-4H
<b>Company:</b>	EnCana Oil & Gas (USA) Inc	<b>TVD Reference:</b>	KBE @ 4925.0ft (Original Well Elev)
<b>Project:</b>	DJ Wattenberg	<b>MD Reference:</b>	KBE @ 4925.0ft (Original Well Elev)
<b>Site:</b>	SWSW S4-T2N-R67W (Sheley)	<b>North Reference:</b>	True
<b>Well:</b>	Sheley 3B-4H	<b>Survey Calculation Method:</b>	Minimum Curvature
<b>Wellbore:</b>	HZ		
<b>Design:</b>	Plan #2		

Planned Survey									
Measured Depth (ft)	Inclination (°)	Azimuth (°)	Vertical Depth (ft)	+N/-S (ft)	+E/-W (ft)	Vertical Section (ft)	Dogleg Rate (°/100ft)	Build Rate (°/100ft)	Comments / Formations
0.0	0.00	0.00	0.0	0.0	0.0	0.0	0.00	0.00	
100.0	0.00	0.00	100.0	0.0	0.0	0.0	0.00	0.00	
200.0	0.00	0.00	200.0	0.0	0.0	0.0	0.00	0.00	
300.0	0.00	0.00	300.0	0.0	0.0	0.0	0.00	0.00	
400.0	0.00	0.00	400.0	0.0	0.0	0.0	0.00	0.00	
500.0	0.00	0.00	500.0	0.0	0.0	0.0	0.00	0.00	
600.0	0.00	0.00	600.0	0.0	0.0	0.0	0.00	0.00	
700.0	0.00	0.00	700.0	0.0	0.0	0.0	0.00	0.00	
800.0	0.00	0.00	800.0	0.0	0.0	0.0	0.00	0.00	
900.0	0.00	0.00	900.0	0.0	0.0	0.0	0.00	0.00	
1,000.0	0.00	0.00	1,000.0	0.0	0.0	0.0	0.00	0.00	
1,100.0	0.00	0.00	1,100.0	0.0	0.0	0.0	0.00	0.00	
1,200.0	0.00	0.00	1,200.0	0.0	0.0	0.0	0.00	0.00	
1,300.0	0.00	0.00	1,300.0	0.0	0.0	0.0	0.00	0.00	
1,400.0	0.00	0.00	1,400.0	0.0	0.0	0.0	0.00	0.00	
1,500.0	0.00	0.00	1,500.0	0.0	0.0	0.0	0.00	0.00	
1,600.0	0.00	0.00	1,600.0	0.0	0.0	0.0	0.00	0.00	
1,700.0	0.00	0.00	1,700.0	0.0	0.0	0.0	0.00	0.00	
1,800.0	0.00	0.00	1,800.0	0.0	0.0	0.0	0.00	0.00	
1,900.0	0.00	0.00	1,900.0	0.0	0.0	0.0	0.00	0.00	
2,000.0	0.00	0.00	2,000.0	0.0	0.0	0.0	0.00	0.00	
2,100.0	0.00	0.00	2,100.0	0.0	0.0	0.0	0.00	0.00	
2,200.0	0.00	0.00	2,200.0	0.0	0.0	0.0	0.00	0.00	
2,300.0	0.00	0.00	2,300.0	0.0	0.0	0.0	0.00	0.00	
2,400.0	0.00	0.00	2,400.0	0.0	0.0	0.0	0.00	0.00	
2,500.0	0.00	0.00	2,500.0	0.0	0.0	0.0	0.00	0.00	
2,600.0	0.00	0.00	2,600.0	0.0	0.0	0.0	0.00	0.00	
2,700.0	0.00	0.00	2,700.0	0.0	0.0	0.0	0.00	0.00	
2,800.0	0.00	0.00	2,800.0	0.0	0.0	0.0	0.00	0.00	
2,900.0	0.00	0.00	2,900.0	0.0	0.0	0.0	0.00	0.00	
3,000.0	0.00	0.00	3,000.0	0.0	0.0	0.0	0.00	0.00	KOP @ 3000'
3,100.0	3.00	324.65	3,100.0	2.1	-1.5	-1.8	3.00	3.00	
3,200.0	6.00	324.65	3,199.6	8.5	-6.1	-7.0	3.00	3.00	
3,300.0	9.00	324.65	3,298.8	19.2	-13.6	-15.8	3.00	3.00	
3,400.0	12.00	324.65	3,397.1	34.0	-24.1	-28.1	3.00	3.00	
3,500.0	15.00	324.65	3,494.3	53.1	-37.7	-43.8	3.00	3.00	
3,600.0	18.00	324.65	3,590.2	76.2	-54.1	-63.0	3.00	3.00	
3,700.0	21.00	324.65	3,684.4	103.5	-73.4	-85.5	3.00	3.00	
3,768.9	23.07	324.65	3,748.3	124.5	-88.4	-102.9	3.00	3.00	EOB; Inc=23°
3,800.0	23.07	324.65	3,776.9	134.5	-95.4	-111.1	0.00	0.00	
3,900.0	23.07	324.65	3,868.9	166.4	-118.1	-137.5	0.00	0.00	
4,000.0	23.07	324.65	3,960.9	198.4	-140.7	-163.9	0.00	0.00	
4,100.0	23.07	324.65	4,052.9	230.3	-163.4	-190.3	0.00	0.00	
4,200.0	23.07	324.65	4,144.9	262.3	-186.1	-216.7	0.00	0.00	
4,300.0	23.07	324.65	4,236.9	294.3	-208.8	-243.1	0.00	0.00	
4,400.0	23.07	324.65	4,328.9	326.2	-231.4	-269.5	0.00	0.00	
4,487.0	23.07	324.65	4,409.0	354.0	-251.2	-292.4	0.00	0.00	Sussex
4,500.0	23.07	324.65	4,420.9	358.2	-254.1	-295.9	0.00	0.00	
4,600.0	23.07	324.65	4,512.9	390.1	-276.8	-322.3	0.00	0.00	
4,700.0	23.07	324.65	4,605.0	422.1	-299.4	-348.6	0.00	0.00	
4,800.0	23.07	324.65	4,697.0	454.0	-322.1	-375.0	0.00	0.00	
4,900.0	23.07	324.65	4,789.0	486.0	-344.8	-401.4	0.00	0.00	

# Planning Report

<b>Database:</b>	USA EDM 5000 Multi Users DB	<b>Local Co-ordinate Reference:</b>	Well Sheley 3B-4H
<b>Company:</b>	EnCana Oil & Gas (USA) Inc	<b>TVD Reference:</b>	KBE @ 4925.0ft (Original Well Elev)
<b>Project:</b>	DJ Wattenberg	<b>MD Reference:</b>	KBE @ 4925.0ft (Original Well Elev)
<b>Site:</b>	SWSW S4-T2N-R67W (Sheley)	<b>North Reference:</b>	True
<b>Well:</b>	Sheley 3B-4H	<b>Survey Calculation Method:</b>	Minimum Curvature
<b>Wellbore:</b>	HZ		
<b>Design:</b>	Plan #2		

Planned Survey									
Measured Depth (ft)	Inclination (°)	Azimuth (°)	Vertical Depth (ft)	+N/-S (ft)	+E/-W (ft)	Vertical Section (ft)	Dogleg Rate (°/100ft)	Build Rate (°/100ft)	Comments / Formations
4,947.9	23.07	324.65	4,833.0	501.3	-355.6	-414.1	0.00	0.00	Shannon
5,000.0	23.07	324.65	4,881.0	517.9	-367.5	-427.8	0.00	0.00	
5,100.0	23.07	324.65	4,973.0	549.9	-390.1	-454.2	0.00	0.00	
5,200.0	23.07	324.65	5,065.0	581.9	-412.8	-480.6	0.00	0.00	
5,300.0	23.07	324.65	5,157.0	613.8	-435.5	-507.0	0.00	0.00	
5,400.0	23.07	324.65	5,249.0	645.8	-458.1	-533.4	0.00	0.00	
5,500.0	23.07	324.65	5,341.0	677.7	-480.8	-559.8	0.00	0.00	
5,600.0	23.07	324.65	5,433.0	709.7	-503.5	-586.2	0.00	0.00	
5,700.0	23.07	324.65	5,525.0	741.6	-526.1	-612.6	0.00	0.00	
5,800.0	23.07	324.65	5,617.0	773.6	-548.8	-639.0	0.00	0.00	
5,900.0	23.07	324.65	5,709.0	805.5	-571.5	-665.4	0.00	0.00	
6,000.0	23.07	324.65	5,801.0	837.5	-594.2	-691.8	0.00	0.00	
6,100.0	23.07	324.65	5,893.0	869.4	-616.8	-718.2	0.00	0.00	
6,200.0	23.07	324.65	5,985.0	901.4	-639.5	-744.6	0.00	0.00	
6,300.0	23.07	324.65	6,077.0	933.4	-662.2	-771.0	0.00	0.00	
6,400.0	23.07	324.65	6,169.0	965.3	-684.8	-797.4	0.00	0.00	
6,500.0	23.07	324.65	6,261.0	997.3	-707.5	-823.8	0.00	0.00	
6,600.0	23.07	324.65	6,353.0	1,029.2	-730.2	-850.2	0.00	0.00	
6,700.0	23.07	324.65	6,445.1	1,061.2	-752.9	-876.6	0.00	0.00	
6,800.0	23.07	324.65	6,537.1	1,093.1	-775.5	-903.0	0.00	0.00	
6,851.0	23.07	324.65	6,584.0	1,109.4	-787.1	-916.4	0.00	0.00	Start 11° build @ 6851' MD
6,900.0	20.01	336.78	6,629.6	1,125.0	-796.0	-927.1	11.00	-6.24	
7,000.0	17.50	10.60	6,724.5	1,155.6	-799.9	-934.8	11.00	-2.51	
7,100.0	21.13	42.49	6,819.1	1,183.7	-785.0	-923.4	11.00	3.63	
7,200.0	28.66	61.84	6,909.9	1,208.4	-751.5	-893.2	11.00	7.52	
7,300.0	37.81	73.07	6,993.6	1,228.7	-700.9	-845.4	11.00	9.16	
7,400.0	47.66	80.34	7,067.0	1,243.9	-635.0	-781.8	11.00	9.85	
7,412.1	48.87	81.05	7,075.0	1,245.4	-626.1	-773.2	11.00	10.07	Sharon Springs
7,500.0	57.84	85.59	7,127.5	1,253.4	-556.1	-704.7	11.00	10.20	
7,556.4	63.67	88.04	7,155.0	1,256.1	-507.0	-656.3	11.00	10.33	Niobrara
7,600.0	68.19	89.77	7,172.8	1,256.8	-467.2	-616.9	11.00	10.39	
7,700.0	78.64	93.37	7,201.3	1,254.1	-371.5	-521.6	11.00	10.44	
7,800.0	89.12	96.72	7,211.9	1,245.4	-272.6	-422.4	11.00	10.49	
7,808.3	90.00	97.00	7,212.0	1,244.4	-264.4	-414.0	11.00	10.49	Landing Pt @ 7212' TVD; 90°
7,900.0	90.00	97.00	7,212.0	1,233.2	-173.4	-322.4	0.00	0.00	
8,000.0	90.00	97.00	7,212.0	1,221.0	-74.1	-222.4	0.00	0.00	
8,100.0	90.00	97.00	7,212.0	1,208.8	25.1	-122.4	0.00	0.00	
8,200.0	90.00	97.00	7,212.0	1,196.6	124.4	-22.4	0.00	0.00	
8,300.0	90.00	97.00	7,212.0	1,184.5	223.6	77.6	0.00	0.00	
8,400.0	90.00	97.00	7,212.0	1,172.3	322.9	177.6	0.00	0.00	
8,500.0	90.00	97.00	7,212.0	1,160.1	422.1	277.6	0.00	0.00	
8,600.0	90.00	97.00	7,212.0	1,147.9	521.4	377.6	0.00	0.00	
8,700.0	90.00	97.00	7,212.0	1,135.7	620.7	477.6	0.00	0.00	
8,800.0	90.00	97.00	7,212.0	1,123.5	719.9	577.6	0.00	0.00	
8,900.0	90.00	97.00	7,212.0	1,111.3	819.2	677.6	0.00	0.00	
9,000.0	90.00	97.00	7,212.0	1,099.1	918.4	777.6	0.00	0.00	
9,100.0	90.00	97.00	7,212.0	1,087.0	1,017.7	877.6	0.00	0.00	
9,200.0	90.00	97.00	7,212.0	1,074.8	1,116.9	977.6	0.00	0.00	
9,300.0	90.00	97.00	7,212.0	1,062.6	1,216.2	1,077.6	0.00	0.00	
9,400.0	90.00	97.00	7,212.0	1,050.4	1,315.4	1,177.6	0.00	0.00	
9,500.0	90.00	97.00	7,212.0	1,038.2	1,414.7	1,277.6	0.00	0.00	
9,600.0	90.00	97.00	7,212.0	1,026.0	1,513.9	1,377.6	0.00	0.00	

## Planning Report

<b>Database:</b>	USA EDM 5000 Multi Users DB	<b>Local Co-ordinate Reference:</b>	Well Sheley 3B-4H
<b>Company:</b>	EnCana Oil & Gas (USA) Inc	<b>TVD Reference:</b>	KBE @ 4925.0ft (Original Well Elev)
<b>Project:</b>	DJ Wattenberg	<b>MD Reference:</b>	KBE @ 4925.0ft (Original Well Elev)
<b>Site:</b>	SWSW S4-T2N-R67W (Sheley)	<b>North Reference:</b>	True
<b>Well:</b>	Sheley 3B-4H	<b>Survey Calculation Method:</b>	Minimum Curvature
<b>Wellbore:</b>	HZ		
<b>Design:</b>	Plan #2		

### Planned Survey

Measured Depth (ft)	Inclination (°)	Azimuth (°)	Vertical Depth (ft)	+N/-S (ft)	+E/-W (ft)	Vertical Section (ft)	Dogleg Rate (°/100ft)	Build Rate (°/100ft)	Comments / Formations
9,700.0	90.00	97.00	7,212.0	1,013.8	1,613.2	1,477.6	0.00	0.00	
9,800.0	90.00	97.00	7,212.0	1,001.7	1,712.5	1,577.6	0.00	0.00	
9,900.0	90.00	97.00	7,212.0	989.5	1,811.7	1,677.6	0.00	0.00	
10,000.0	90.00	97.00	7,212.0	977.3	1,911.0	1,777.6	0.00	0.00	
10,100.0	90.00	97.00	7,212.0	965.1	2,010.2	1,877.6	0.00	0.00	
10,200.0	90.00	97.00	7,212.0	952.9	2,109.5	1,977.6	0.00	0.00	
10,300.0	90.00	97.00	7,212.0	940.7	2,208.7	2,077.6	0.00	0.00	
10,400.0	90.00	97.00	7,212.0	928.5	2,308.0	2,177.6	0.00	0.00	
10,500.0	90.00	97.00	7,212.0	916.3	2,407.2	2,277.6	0.00	0.00	
10,600.0	90.00	97.00	7,212.0	904.2	2,506.5	2,377.6	0.00	0.00	
10,700.0	90.00	97.00	7,212.0	892.0	2,605.7	2,477.6	0.00	0.00	
10,800.0	90.00	97.00	7,212.0	879.8	2,705.0	2,577.6	0.00	0.00	
10,900.0	90.00	97.00	7,212.0	867.6	2,804.3	2,677.6	0.00	0.00	
11,000.0	90.00	97.00	7,212.0	855.4	2,903.5	2,777.6	0.00	0.00	
11,100.0	90.00	97.00	7,212.0	843.2	3,002.8	2,877.6	0.00	0.00	
11,200.0	90.00	97.00	7,212.0	831.0	3,102.0	2,977.6	0.00	0.00	
11,300.0	90.00	97.00	7,212.0	818.8	3,201.3	3,077.6	0.00	0.00	
11,400.0	90.00	97.00	7,212.0	806.7	3,300.5	3,177.6	0.00	0.00	
11,500.0	90.00	97.00	7,212.0	794.5	3,399.8	3,277.6	0.00	0.00	
11,600.0	90.00	97.00	7,212.0	782.3	3,499.0	3,377.6	0.00	0.00	
11,700.0	90.00	97.00	7,212.0	770.1	3,598.3	3,477.6	0.00	0.00	
11,800.0	90.00	97.00	7,212.0	757.9	3,697.5	3,577.6	0.00	0.00	
11,900.0	90.00	97.00	7,212.0	745.7	3,796.8	3,677.6	0.00	0.00	
12,000.0	90.00	97.00	7,212.0	733.5	3,896.1	3,777.6	0.00	0.00	
12,008.3	90.00	97.00	7,212.0	732.5	3,904.3	3,786.0	0.00	0.00	TD at 12008.3 - Sheley 3B-4H PBHL

### Targets

Target Name	Dip Angle (°)	Dip Dir. (°)	TVD (ft)	+N/-S (ft)	+E/-W (ft)	Northing (ft)	Easting (ft)	Latitude	Longitude
- hit/miss target									
- Shape									
Sheley 3B-4H PBHL	0.00	0.00	7,212.0	732.5	3,904.3	1,303,200.38	3,171,194.66	40.164050	-104.887470
- plan hits target center									
- Point									

### Formations

Measured Depth (ft)	Vertical Depth (ft)	Name	Lithology	Dip (°)	Dip Direction (°)
4,487.0	4,409.0	Sussex			
4,947.9	4,833.0	Shannon			
7,412.1	7,075.0	Sharon Springs			
7,556.4	7,155.0	Niobrara			

## Planning Report

<b>Database:</b>	USA EDM 5000 Multi Users DB	<b>Local Co-ordinate Reference:</b>	Well Sheley 3B-4H
<b>Company:</b>	EnCana Oil & Gas (USA) Inc	<b>TVD Reference:</b>	KBE @ 4925.0ft (Original Well Elev)
<b>Project:</b>	DJ Wattenberg	<b>MD Reference:</b>	KBE @ 4925.0ft (Original Well Elev)
<b>Site:</b>	SWSW S4-T2N-R67W (Sheley)	<b>North Reference:</b>	True
<b>Well:</b>	Sheley 3B-4H	<b>Survey Calculation Method:</b>	Minimum Curvature
<b>Wellbore:</b>	HZ		
<b>Design:</b>	Plan #2		

### Plan Annotations

Measured Depth (ft)	Vertical Depth (ft)	Local Coordinates		Comment
		+N/-S (ft)	+E/-W (ft)	
3,000.0	3,000.0	0.0	0.0	KOP @ 3000'
3,768.9	3,748.3	124.5	-88.4	EOB; Inc=23°
6,851.0	6,584.0	1,109.4	-787.1	Start 11° build @ 6851' MD
7,808.3	7,212.0	1,244.4	-264.4	Landing Pt @ 7212' TVD; 90°
12,008.3	7,212.0	732.5	3,904.3	TD at 12008.3

# **EnCana Oil & Gas (USA) Inc**

**DJ Wattenberg**

**SWSW S4-T2N-R67W (Sheley)**

**Sheley 3B-4H**

**HZ**

**Plan #2**

## **Anticollision Report**

**27 October, 2011**



## Anticollision Report

<b>Company:</b>	EnCana Oil & Gas (USA) Inc	<b>Local Co-ordinate Reference:</b>	Well Sheley 3B-4H
<b>Project:</b>	DJ Wattenberg	<b>TVD Reference:</b>	KBE @ 4925.0ft (Original Well Elev)
<b>Reference Site:</b>	SWSW S4-T2N-R67W (Sheley)	<b>MD Reference:</b>	KBE @ 4925.0ft (Original Well Elev)
<b>Site Error:</b>	0.0ft	<b>North Reference:</b>	True
<b>Reference Well:</b>	Sheley 3B-4H	<b>Survey Calculation Method:</b>	Minimum Curvature
<b>Well Error:</b>	0.0ft	<b>Output errors are at</b>	2.00 sigma
<b>Reference Wellbore</b>	HZ	<b>Database:</b>	USA EDM 5000 Multi Users DB
<b>Reference Design:</b>	Plan #2	<b>Offset TVD Reference:</b>	Offset Datum

<b>Reference</b>	Plan #2		
<b>Filter type:</b>	NO GLOBAL FILTER: Using user defined selection & filtering criteria		
<b>Interpolation Method:</b>	MD Interval 100.0ft	<b>Error Model:</b>	Systematic Ellipse
<b>Depth Range:</b>	Unlimited	<b>Scan Method:</b>	Closest Approach 3D
<b>Results Limited by:</b>	Maximum center-center distance of 1,000.0ft	<b>Error Surface:</b>	Elliptical Conic
<b>Warning Levels Evaluated at:</b>	2.00 Sigma		

<b>Survey Tool Program</b>	<b>Date</b>	10/27/2011		
<b>From (ft)</b>	<b>To (ft)</b>	<b>Survey (Wellbore)</b>	<b>Tool Name</b>	<b>Description</b>
0.0	12,008.3	Plan #2 (HZ)	MWD	Geolink MWD

Summary						
Site Name	Reference Measured Depth (ft)	Offset Measured Depth (ft)	Distance Between Centres (ft)	Distance Between Ellipses (ft)	Separation Factor	Warning
Offset Well - Wellbore - Design						
SWSW S4-T2N-R67W (Sheley)						
Barnes 2-4 - Existing - Existing	10,567.9	7,186.0	516.6	435.2	6.350	CC, ES
Barnes 2-4 - Existing - Existing	10,600.0	7,186.0	517.6	435.5	6.302	SF
Barnes 2-4X - Existing - Existing	10,567.9	7,186.0	516.6	435.3	6.350	CC, ES
Barnes 2-4X - Existing - Existing	10,600.0	7,186.0	517.6	435.5	6.302	SF
Barnes 34-4 (Existing) - Existing - Existing						Out of range
Luhman 1 (Existing) - Existing - Existing	10,896.7	7,208.0	628.1	538.8	7.033	CC
Luhman 1 (Existing) - Existing - Existing	10,900.0	7,208.0	628.1	538.7	7.027	ES
Luhman 1 (Existing) - Existing - Existing	11,000.0	7,208.0	636.5	544.7	6.934	SF
Luhman 33-4 (Existing) - Existing - Existing	10,597.3	7,198.0	470.3	388.2	5.730	CC
Luhman 33-4 (Existing) - Existing - Existing	10,600.0	7,198.0	470.3	388.2	5.725	ES
Luhman 33-4 (Existing) - Existing - Existing	10,700.0	7,198.0	481.4	396.8	5.693	SF
Luhman 43-4 (Existing) - Existing - Existing	11,804.4	7,212.0	511.5	400.2	4.595	CC, ES
Luhman 43-4 (Existing) - Existing - Existing	11,900.0	7,212.0	520.4	406.7	4.578	SF
Luhman 44-4 (Existing) - Existing - Existing						Out of range
Sheley 1 - Existing - Existing	8,708.4	7,186.0	448.8	409.9	11.539	CC, ES
Sheley 1 - Existing - Existing	8,800.0	7,186.0	458.0	417.3	11.244	SF
Sheley 13-4 (Existing) - Existing - Existing	7,686.1	7,162.4	248.8	220.8	8.891	CC, ES, SF
Sheley 14-4 (Existing) - Existing - Existing	3,000.0	2,985.0	38.4	28.0	3.687	CC, ES, SF
Sheley 23-4 (Existing) - Existing - Existing	9,354.9	7,181.0	411.2	358.4	7.786	CC, ES
Sheley 23-4 (Existing) - Existing - Existing	9,400.0	7,181.0	413.7	359.9	7.684	SF
Sheley 24-4 (Existing) - Existing - Existing						Out of range
Sheley 3A-4H - HZ - Plan #2	3,000.0	3,000.0	25.7	15.2	2.460	CC, ES, SF

CC - Min centre to center distance or convergent point, SF - min separation factor, ES - min ellipse separation

# Anticollision Report

<b>Company:</b>	EnCana Oil & Gas (USA) Inc	<b>Local Co-ordinate Reference:</b>	Well Sheley 3B-4H
<b>Project:</b>	DJ Wattenberg	<b>TVD Reference:</b>	KBE @ 4925.0ft (Original Well Elev)
<b>Reference Site:</b>	SWSW S4-T2N-R67W (Sheley)	<b>MD Reference:</b>	KBE @ 4925.0ft (Original Well Elev)
<b>Site Error:</b>	0.0ft	<b>North Reference:</b>	True
<b>Reference Well:</b>	Sheley 3B-4H	<b>Survey Calculation Method:</b>	Minimum Curvature
<b>Well Error:</b>	0.0ft	<b>Output errors are at</b>	2.00 sigma
<b>Reference Wellbore</b>	HZ	<b>Database:</b>	USA EDM 5000 Multi Users DB
<b>Reference Design:</b>	Plan #2	<b>Offset TVD Reference:</b>	Offset Datum

Offset Design SWSW S4-T2N-R67W (Sheley) - Barnes 2-4 - Existing - Existing													Offset Site Error:	0.0 ft
Survey Program: 0-MWD													Offset Well Error:	0.0 ft
Reference		Offset		Semi Major Axis			Distance							Warning
Measured Depth (ft)	Vertical Depth (ft)	Measured Depth (ft)	Vertical Depth (ft)	Reference (ft)	Offset (ft)	Highside Toolface (°)	Offset Wellbore Centre +N/-S (ft)	+E/-W (ft)	Between Centres (ft)	Between Ellipses (ft)	Total Uncertainty Axis	Separation Factor		
9,800.0	7,212.0	7,186.0	7,186.0	53.5	12.5	-90.00	1,420.8	2,537.6	925.5	862.4	63.11	14.665		
9,900.0	7,212.0	7,186.0	7,186.0	55.7	12.5	-90.00	1,420.8	2,537.6	844.4	778.9	65.46	12.899		
10,000.0	7,212.0	7,186.0	7,186.0	58.0	12.5	-90.00	1,420.8	2,537.6	767.7	699.9	67.82	11.320		
10,100.0	7,212.0	7,186.0	7,186.0	60.3	12.5	-90.00	1,420.8	2,537.6	697.0	626.8	70.19	9.931		
10,200.0	7,212.0	7,186.0	7,186.0	62.6	12.5	-90.00	1,420.8	2,537.6	634.2	561.7	72.56	8.740		
10,300.0	7,212.0	7,186.0	7,186.0	64.9	12.5	-90.00	1,420.8	2,537.6	581.9	507.0	74.95	7.765		
10,400.0	7,212.0	7,186.0	7,186.0	67.2	12.5	-90.00	1,420.8	2,537.6	543.2	465.9	77.33	7.024		
10,500.0	7,212.0	7,186.0	7,186.0	69.5	12.5	-90.00	1,420.8	2,537.6	521.0	441.3	79.73	6.535		
10,567.9	7,212.0	7,186.0	7,186.0	71.1	12.5	-90.00	1,420.8	2,537.6	516.6	435.2	81.36	6.350 CC, ES		
10,600.0	7,212.0	7,186.0	7,186.0	71.8	12.5	-90.00	1,420.8	2,537.6	517.6	435.5	82.13	6.302 SF		
10,700.0	7,212.0	7,186.0	7,186.0	74.2	12.5	-90.00	1,420.8	2,537.6	533.2	448.7	84.53	6.308		
10,800.0	7,212.0	7,186.0	7,186.0	76.5	12.5	-90.00	1,420.8	2,537.6	566.3	479.4	86.94	6.514		
10,900.0	7,212.0	7,186.0	7,186.0	78.9	12.5	-90.00	1,420.8	2,537.6	614.1	524.8	89.35	6.873		
11,000.0	7,212.0	7,186.0	7,186.0	81.2	12.5	-90.00	1,420.8	2,537.6	673.5	581.7	91.77	7.339		
11,100.0	7,212.0	7,186.0	7,186.0	83.6	12.5	-90.00	1,420.8	2,537.6	741.6	647.4	94.18	7.874		
11,200.0	7,212.0	7,186.0	7,186.0	85.9	12.5	-90.00	1,420.8	2,537.6	816.3	719.7	96.60	8.450		
11,300.0	7,212.0	7,186.0	7,186.0	88.3	12.5	-90.00	1,420.8	2,537.6	896.0	797.0	99.03	9.048		
11,400.0	7,212.0	7,186.0	7,186.0	90.7	12.5	-90.00	1,420.8	2,537.6	979.4	877.9	101.45	9.654		

# Anticollision Report

<b>Company:</b>	EnCana Oil & Gas (USA) Inc	<b>Local Co-ordinate Reference:</b>	Well Sheley 3B-4H
<b>Project:</b>	DJ Wattenberg	<b>TVD Reference:</b>	KBE @ 4925.0ft (Original Well Elev)
<b>Reference Site:</b>	SWSW S4-T2N-R67W (Sheley)	<b>MD Reference:</b>	KBE @ 4925.0ft (Original Well Elev)
<b>Site Error:</b>	0.0ft	<b>North Reference:</b>	True
<b>Reference Well:</b>	Sheley 3B-4H	<b>Survey Calculation Method:</b>	Minimum Curvature
<b>Well Error:</b>	0.0ft	<b>Output errors are at</b>	2.00 sigma
<b>Reference Wellbore</b>	HZ	<b>Database:</b>	USA EDM 5000 Multi Users DB
<b>Reference Design:</b>	Plan #2	<b>Offset TVD Reference:</b>	Offset Datum

Offset Design SWSW S4-T2N-R67W (Sheley) - Barnes 2-4X - Existing - Existing													Offset Site Error:	0.0 ft
Survey Program: 0-MWD													Offset Well Error:	0.0 ft
Reference		Offset		Semi Major Axis			Distance				Total		Warning	
Measured Depth (ft)	Vertical Depth (ft)	Measured Depth (ft)	Vertical Depth (ft)	Reference (ft)	Offset (ft)	Highside Toolface (°)	Offset Wellbore Centre +N/-S (ft)	+E/-W (ft)	Between Centres (ft)	Between Ellipses (ft)	Uncertainty Axis	Separation Factor		
9,800.0	7,212.0	7,186.0	7,186.0	53.5	12.5	-90.00	1,420.8	2,537.6	925.5	862.4	63.11	14.665		
9,900.0	7,212.0	7,186.0	7,186.0	55.7	12.5	-90.00	1,420.8	2,537.6	844.4	778.9	65.46	12.899		
10,000.0	7,212.0	7,186.0	7,186.0	58.0	12.5	-90.00	1,420.8	2,537.6	767.7	699.9	67.82	11.320		
10,100.0	7,212.0	7,186.0	7,186.0	60.3	12.5	-90.00	1,420.8	2,537.6	697.0	626.8	70.19	9.931		
10,200.0	7,212.0	7,186.0	7,186.0	62.6	12.5	-90.00	1,420.8	2,537.6	634.2	561.7	72.56	8.741		
10,300.0	7,212.0	7,186.0	7,186.0	64.9	12.5	-90.00	1,420.8	2,537.6	582.0	507.0	74.95	7.765		
10,400.0	7,212.0	7,186.0	7,186.0	67.2	12.5	-90.00	1,420.8	2,537.6	543.2	465.9	77.33	7.024		
10,500.0	7,212.0	7,186.0	7,186.0	69.5	12.5	-90.00	1,420.8	2,537.6	521.1	441.3	79.73	6.535		
10,567.9	7,212.0	7,186.0	7,186.0	71.1	12.5	-90.00	1,420.8	2,537.6	516.6	435.3	81.36	6.350 CC, ES		
10,600.0	7,212.0	7,186.0	7,186.0	71.8	12.5	-90.00	1,420.8	2,537.6	517.6	435.5	82.13	6.302 SF		
10,700.0	7,212.0	7,186.0	7,186.0	74.2	12.5	-90.00	1,420.8	2,537.6	533.2	448.7	84.53	6.308		
10,800.0	7,212.0	7,186.0	7,186.0	76.5	12.5	-90.00	1,420.8	2,537.6	566.3	479.4	86.94	6.514		
10,900.0	7,212.0	7,186.0	7,186.0	78.9	12.5	-90.00	1,420.8	2,537.6	614.1	524.8	89.35	6.873		
11,000.0	7,212.0	7,186.0	7,186.0	81.2	12.5	-90.00	1,420.8	2,537.6	673.5	581.7	91.77	7.339		
11,100.0	7,212.0	7,186.0	7,186.0	83.6	12.5	-90.00	1,420.8	2,537.6	741.6	647.4	94.18	7.874		
11,200.0	7,212.0	7,186.0	7,186.0	85.9	12.5	-90.00	1,420.8	2,537.6	816.3	719.7	96.60	8.450		
11,300.0	7,212.0	7,186.0	7,186.0	88.3	12.5	-90.00	1,420.8	2,537.6	896.0	797.0	99.03	9.048		
11,400.0	7,212.0	7,186.0	7,186.0	90.7	12.5	-90.00	1,420.8	2,537.6	979.4	878.0	101.45	9.654		

# Anticollision Report

<b>Company:</b>	EnCana Oil & Gas (USA) Inc	<b>Local Co-ordinate Reference:</b>	Well Sheley 3B-4H
<b>Project:</b>	DJ Wattenberg	<b>TVD Reference:</b>	KBE @ 4925.0ft (Original Well Elev)
<b>Reference Site:</b>	SWSW S4-T2N-R67W (Sheley)	<b>MD Reference:</b>	KBE @ 4925.0ft (Original Well Elev)
<b>Site Error:</b>	0.0ft	<b>North Reference:</b>	True
<b>Reference Well:</b>	Sheley 3B-4H	<b>Survey Calculation Method:</b>	Minimum Curvature
<b>Well Error:</b>	0.0ft	<b>Output errors are at</b>	2.00 sigma
<b>Reference Wellbore</b>	HZ	<b>Database:</b>	USA EDM 5000 Multi Users DB
<b>Reference Design:</b>	Plan #2	<b>Offset TVD Reference:</b>	Offset Datum

Offset Design SWSW S4-T2N-R67W (Sheley) - Luhman 1 (Existing) - Existing - Existing													Offset Site Error:	0.0 ft
Survey Program: 0-MWD													Offset Well Error:	0.0 ft
Reference		Offset		Semi Major Axis			Distance							Warning
Measured Depth (ft)	Vertical Depth (ft)	Measured Depth (ft)	Vertical Depth (ft)	Reference (ft)	Offset (ft)	Highside Toolface (°)	Offset Wellbore Centre +N/-S (ft)	+E/-W (ft)	Between Centres (ft)	Between Ellipses (ft)	Total Uncertainty Axis	Separation Factor		
10,200.0	7,212.0	7,208.0	7,208.0	62.6	12.6	90.00	244.6	2,724.4	938.0	865.4	72.60	12.920		
10,300.0	7,212.0	7,208.0	7,208.0	64.9	12.6	90.00	244.6	2,724.4	866.3	791.4	74.98	11.554		
10,400.0	7,212.0	7,208.0	7,208.0	67.2	12.6	90.00	244.6	2,724.4	800.8	723.4	77.37	10.349		
10,500.0	7,212.0	7,208.0	7,208.0	69.5	12.6	90.00	244.6	2,724.4	742.9	663.1	79.77	9.313		
10,600.0	7,212.0	7,208.0	7,208.0	71.8	12.6	90.00	244.6	2,724.4	694.7	612.5	82.17	8.454		
10,700.0	7,212.0	7,208.0	7,208.0	74.2	12.6	90.00	244.6	2,724.4	658.2	573.6	84.57	7.783		
10,800.0	7,212.0	7,208.0	7,208.0	76.5	12.6	90.00	244.6	2,724.4	635.5	548.5	86.98	7.307		
10,896.7	7,212.0	7,208.0	7,208.0	78.8	12.6	90.00	244.6	2,724.4	628.1	538.8	89.31	7.033 CC		
10,900.0	7,212.0	7,208.0	7,208.0	78.9	12.6	90.00	244.6	2,724.4	628.1	538.7	89.39	7.027 ES		
11,000.0	7,212.0	7,208.0	7,208.0	81.2	12.6	90.00	244.6	2,724.4	636.5	544.7	91.80	6.934 SF		
11,100.0	7,212.0	7,208.0	7,208.0	83.6	12.6	90.00	244.6	2,724.4	660.2	566.0	94.22	7.007		
11,200.0	7,212.0	7,208.0	7,208.0	85.9	12.6	90.00	244.6	2,724.4	697.5	600.9	96.64	7.217		
11,300.0	7,212.0	7,208.0	7,208.0	88.3	12.6	90.00	244.6	2,724.4	746.4	647.4	99.07	7.535		
11,400.0	7,212.0	7,208.0	7,208.0	90.7	12.6	90.00	244.6	2,724.4	804.9	703.4	101.49	7.931		
11,500.0	7,212.0	7,208.0	7,208.0	93.1	12.6	90.00	244.6	2,724.4	870.9	767.0	103.92	8.381		
11,600.0	7,212.0	7,208.0	7,208.0	95.5	12.6	90.00	244.6	2,724.4	943.0	836.6	106.35	8.867		

# Anticollision Report

<b>Company:</b>	EnCana Oil & Gas (USA) Inc	<b>Local Co-ordinate Reference:</b>	Well Sheley 3B-4H
<b>Project:</b>	DJ Wattenberg	<b>TVD Reference:</b>	KBE @ 4925.0ft (Original Well Elev)
<b>Reference Site:</b>	SWSW S4-T2N-R67W (Sheley)	<b>MD Reference:</b>	KBE @ 4925.0ft (Original Well Elev)
<b>Site Error:</b>	0.0ft	<b>North Reference:</b>	True
<b>Reference Well:</b>	Sheley 3B-4H	<b>Survey Calculation Method:</b>	Minimum Curvature
<b>Well Error:</b>	0.0ft	<b>Output errors are at</b>	2.00 sigma
<b>Reference Wellbore</b>	HZ	<b>Database:</b>	USA EDM 5000 Multi Users DB
<b>Reference Design:</b>	Plan #2	<b>Offset TVD Reference:</b>	Offset Datum

Offset Design SWSW S4-T2N-R67W (Sheley) - Luhman 33-4 (Existing) - Existing - Existing													Offset Site Error:	0.0 ft
Survey Program:		0-MWD											Offset Well Error:	0.0 ft
Reference		Offset		Semi Major Axis			Distance						Warning	
Measured Depth	Vertical	Measured Depth	Vertical	Reference	Offset	Highside	Offset Wellbore Centre		Between	Between	Total	Separation		
Depth (ft)	Depth (ft)	Depth (ft)	Depth (ft)	(ft)	(ft)	Toolface (°)	+N/-S (ft)	+E/-W (ft)	Centres (ft)	Ellipses (ft)	Uncertainty Axis	Factor		
9,800.0	7,212.0	7,198.0	7,198.0	53.5	12.6	-90.00	1,371.3	2,561.1	925.6	862.5	63.13	14.662		
9,900.0	7,212.0	7,198.0	7,198.0	55.7	12.6	-90.00	1,371.3	2,561.1	841.0	775.6	65.48	12.844		
10,000.0	7,212.0	7,198.0	7,198.0	58.0	12.6	-90.00	1,371.3	2,561.1	760.2	692.4	67.84	11.206		
10,100.0	7,212.0	7,198.0	7,198.0	60.3	12.6	-90.00	1,371.3	2,561.1	684.4	614.2	70.21	9.749		
10,200.0	7,212.0	7,198.0	7,198.0	62.6	12.6	-90.00	1,371.3	2,561.1	615.6	543.0	72.58	8.482		
10,300.0	7,212.0	7,198.0	7,198.0	64.9	12.6	-90.00	1,371.3	2,561.1	556.4	481.4	74.97	7.422		
10,400.0	7,212.0	7,198.0	7,198.0	67.2	12.6	-90.00	1,371.3	2,561.1	510.0	432.6	77.36	6.593		
10,500.0	7,212.0	7,198.0	7,198.0	69.5	12.6	-90.00	1,371.3	2,561.1	480.3	400.5	79.75	6.022		
10,597.3	7,212.0	7,198.0	7,198.0	71.7	12.6	-90.00	1,371.3	2,561.1	470.3	388.2	82.08	5.730 CC		
10,600.0	7,212.0	7,198.0	7,198.0	71.8	12.6	-90.00	1,371.3	2,561.1	470.3	388.2	82.15	5.725 ES		
10,700.0	7,212.0	7,198.0	7,198.0	74.2	12.6	-90.00	1,371.3	2,561.1	481.4	396.8	84.55	5.693 SF		
10,800.0	7,212.0	7,198.0	7,198.0	76.5	12.6	-90.00	1,371.3	2,561.1	512.1	425.2	86.96	5.889		
10,900.0	7,212.0	7,198.0	7,198.0	78.9	12.6	-90.00	1,371.3	2,561.1	559.3	469.9	89.37	6.258		
11,000.0	7,212.0	7,198.0	7,198.0	81.2	12.6	-90.00	1,371.3	2,561.1	619.2	527.4	91.79	6.746		
11,100.0	7,212.0	7,198.0	7,198.0	83.6	12.6	-90.00	1,371.3	2,561.1	688.4	594.2	94.20	7.308		
11,200.0	7,212.0	7,198.0	7,198.0	85.9	12.6	-90.00	1,371.3	2,561.1	764.5	667.9	96.63	7.912		
11,300.0	7,212.0	7,198.0	7,198.0	88.3	12.6	-90.00	1,371.3	2,561.1	845.6	746.5	99.05	8.537		
11,400.0	7,212.0	7,198.0	7,198.0	90.7	12.6	-90.00	1,371.3	2,561.1	930.4	828.9	101.47	9.168		

# Anticollision Report

<b>Company:</b>	EnCana Oil & Gas (USA) Inc	<b>Local Co-ordinate Reference:</b>	Well Sheley 3B-4H
<b>Project:</b>	DJ Wattenberg	<b>TVD Reference:</b>	KBE @ 4925.0ft (Original Well Elev)
<b>Reference Site:</b>	SWSW S4-T2N-R67W (Sheley)	<b>MD Reference:</b>	KBE @ 4925.0ft (Original Well Elev)
<b>Site Error:</b>	0.0ft	<b>North Reference:</b>	True
<b>Reference Well:</b>	Sheley 3B-4H	<b>Survey Calculation Method:</b>	Minimum Curvature
<b>Well Error:</b>	0.0ft	<b>Output errors are at</b>	2.00 sigma
<b>Reference Wellbore</b>	HZ	<b>Database:</b>	USA EDM 5000 Multi Users DB
<b>Reference Design:</b>	Plan #2	<b>Offset TVD Reference:</b>	Offset Datum

<b>Offset Design</b> SWSW S4-T2N-R67W (Sheley) - Luhman 43-4 (Existing) - Existing - Existing												<b>Offset Site Error:</b>	0.0 ft
Survey Program: 0-MWD												<b>Offset Well Error:</b>	0.0 ft
Reference		Offset		Semi Major Axis		Distance							
Measured Depth (ft)	Vertical Depth (ft)	Measured Depth (ft)	Vertical Depth (ft)	Reference (ft)	Offset (ft)	Highside Toolface (°)	Offset Wellbore Centre +N/-S (ft)	+E/-W (ft)	Between Centres (ft)	Between Ellipses (ft)	Total Uncertainty Axis	Separation Factor	Warning
11,000.0	7,212.0	7,212.0	7,212.0	81.2	12.6	-90.00	1,265.1	3,764.2	953.2	861.4	91.81	10.383	
11,100.0	7,212.0	7,212.0	7,212.0	83.6	12.6	-90.00	1,265.1	3,764.2	870.5	776.3	94.23	9.238	
11,200.0	7,212.0	7,212.0	7,212.0	85.9	12.6	-90.00	1,265.1	3,764.2	791.8	695.1	96.65	8.192	
11,300.0	7,212.0	7,212.0	7,212.0	88.3	12.6	-90.00	1,265.1	3,764.2	718.4	619.3	99.07	7.251	
11,400.0	7,212.0	7,212.0	7,212.0	90.7	12.6	-90.00	1,265.1	3,764.2	652.0	550.5	101.50	6.424	
11,500.0	7,212.0	7,212.0	7,212.0	93.1	12.6	-90.00	1,265.1	3,764.2	595.2	491.3	103.93	5.727	
11,600.0	7,212.0	7,212.0	7,212.0	95.5	12.6	-90.00	1,265.1	3,764.2	550.8	444.5	106.36	5.179	
11,700.0	7,212.0	7,212.0	7,212.0	97.9	12.6	-90.00	1,265.1	3,764.2	522.0	413.3	108.79	4.799	
11,800.0	7,212.0	7,212.0	7,212.0	100.3	12.6	-90.00	1,265.1	3,764.2	511.5	400.3	111.22	4.599	
11,804.4	7,212.0	7,212.0	7,212.0	100.4	12.6	-90.00	1,265.1	3,764.2	511.5	400.2	111.33	4.595 CC, ES	
11,900.0	7,212.0	7,212.0	7,212.0	102.7	12.6	-90.00	1,265.1	3,764.2	520.4	406.7	113.65	4.578 SF	
12,000.0	7,212.0	7,212.0	7,212.0	105.1	12.6	-90.00	1,265.1	3,764.2	547.6	431.5	116.09	4.717	
12,008.3	7,212.0	7,212.0	7,212.0	105.3	12.6	-90.00	1,265.1	3,764.2	550.7	434.4	116.29	4.735	

# Anticollision Report

<b>Company:</b>	EnCana Oil & Gas (USA) Inc	<b>Local Co-ordinate Reference:</b>	Well Sheley 3B-4H
<b>Project:</b>	DJ Wattenberg	<b>TVD Reference:</b>	KBE @ 4925.0ft (Original Well Elev)
<b>Reference Site:</b>	SWSW S4-T2N-R67W (Sheley)	<b>MD Reference:</b>	KBE @ 4925.0ft (Original Well Elev)
<b>Site Error:</b>	0.0ft	<b>North Reference:</b>	True
<b>Reference Well:</b>	Sheley 3B-4H	<b>Survey Calculation Method:</b>	Minimum Curvature
<b>Well Error:</b>	0.0ft	<b>Output errors are at</b>	2.00 sigma
<b>Reference Wellbore</b>	HZ	<b>Database:</b>	USA EDM 5000 Multi Users DB
<b>Reference Design:</b>	Plan #2	<b>Offset TVD Reference:</b>	Offset Datum

Offset Design SWSW S4-T2N-R67W (Sheley) - Sheley 1 - Existing - Existing													Offset Site Error:	0.0 ft
Survey Program: 0-MWD													Offset Well Error:	0.0 ft
Reference		Offset		Semi Major Axis		Highside Toolface (°)	Distance		Total Uncertainty Axis	Separation Factor	Warning			
Measured Depth (ft)	Vertical Depth (ft)	Measured Depth (ft)	Vertical Depth (ft)	Reference (ft)	Offset (ft)		Offset Wellbore Centre +N/-S (ft)	+E/-W (ft)						
0.0	0.0	0.0	0.0	0.0	0.0	39.80	689.2	574.3	897.5					
100.0	100.0	74.0	74.0	0.2	0.1	39.80	689.2	574.3	897.2	896.9	0.28	3,192.153		
200.0	200.0	174.0	174.0	0.3	0.3	39.80	689.2	574.3	897.2	896.5	0.63	1,423.911		
300.0	300.0	274.0	274.0	0.5	0.5	39.80	689.2	574.3	897.2	896.2	0.98	916.278		
400.0	400.0	374.0	374.0	0.7	0.7	39.80	689.2	574.3	897.2	895.8	1.33	675.469		
500.0	500.0	474.0	474.0	0.8	0.8	39.80	689.2	574.3	897.2	895.5	1.68	534.893		
600.0	600.0	574.0	574.0	1.0	1.0	39.80	689.2	574.3	897.2	895.1	2.03	442.749		
700.0	700.0	674.0	674.0	1.2	1.2	39.80	689.2	574.3	897.2	894.8	2.38	377.687		
800.0	800.0	774.0	774.0	1.4	1.4	39.80	689.2	574.3	897.2	894.4	2.72	329.297		
900.0	900.0	874.0	874.0	1.5	1.5	39.80	689.2	574.3	897.2	894.1	3.07	291.898		
1,000.0	1,000.0	974.0	974.0	1.7	1.7	39.80	689.2	574.3	897.2	893.7	3.42	262.128		
1,100.0	1,100.0	1,074.0	1,074.0	1.9	1.9	39.80	689.2	574.3	897.2	893.4	3.77	237.868		
1,200.0	1,200.0	1,174.0	1,174.0	2.1	2.0	39.80	689.2	574.3	897.2	893.0	4.12	217.718		
1,300.0	1,300.0	1,274.0	1,274.0	2.2	2.2	39.80	689.2	574.3	897.2	892.7	4.47	200.715		
1,400.0	1,400.0	1,374.0	1,374.0	2.4	2.4	39.80	689.2	574.3	897.2	892.3	4.82	186.176		
1,500.0	1,500.0	1,474.0	1,474.0	2.6	2.6	39.80	689.2	574.3	897.2	892.0	5.17	173.601		
1,600.0	1,600.0	1,574.0	1,574.0	2.8	2.7	39.80	689.2	574.3	897.2	891.6	5.52	162.617		
1,700.0	1,700.0	1,674.0	1,674.0	2.9	2.9	39.80	689.2	574.3	897.2	891.3	5.87	152.940		
1,800.0	1,800.0	1,774.0	1,774.0	3.1	3.1	39.80	689.2	574.3	897.2	890.9	6.22	144.350		
1,900.0	1,900.0	1,874.0	1,874.0	3.3	3.3	39.80	689.2	574.3	897.2	890.6	6.56	136.674		
2,000.0	2,000.0	1,974.0	1,974.0	3.5	3.4	39.80	689.2	574.3	897.2	890.2	6.91	129.773		
2,100.0	2,100.0	2,074.0	2,074.0	3.6	3.6	39.80	689.2	574.3	897.2	889.9	7.26	123.536		
2,200.0	2,200.0	2,174.0	2,174.0	3.8	3.8	39.80	689.2	574.3	897.2	889.5	7.61	117.870		
2,300.0	2,300.0	2,274.0	2,274.0	4.0	4.0	39.80	689.2	574.3	897.2	889.2	7.96	112.702		
2,400.0	2,400.0	2,374.0	2,374.0	4.2	4.1	39.80	689.2	574.3	897.2	888.8	8.31	107.967		
2,500.0	2,500.0	2,474.0	2,474.0	4.3	4.3	39.80	689.2	574.3	897.2	888.5	8.66	103.615		
2,600.0	2,600.0	2,574.0	2,574.0	4.5	4.5	39.80	689.2	574.3	897.2	888.1	9.01	99.599		
2,700.0	2,700.0	2,674.0	2,674.0	4.7	4.7	39.80	689.2	574.3	897.2	887.8	9.36	95.884		
2,800.0	2,800.0	2,774.0	2,774.0	4.9	4.8	39.80	689.2	574.3	897.2	887.4	9.71	92.435		
2,900.0	2,900.0	2,874.0	2,874.0	5.0	5.0	39.80	689.2	574.3	897.2	887.1	10.05	89.226		
3,000.0	3,000.0	2,974.0	2,974.0	5.2	5.2	39.80	689.2	574.3	897.2	886.8	10.40	86.233		
3,100.0	3,100.0	3,074.0	3,074.0	5.4	5.4	75.34	689.2	574.3	896.5	885.7	10.75	83.371		
3,200.0	3,199.6	3,173.6	3,173.6	5.6	5.5	75.88	689.2	574.3	894.5	883.4	11.11	80.549		
3,300.0	3,298.8	3,272.8	3,272.8	5.8	5.7	76.78	689.2	574.3	891.4	880.0	11.47	77.725		
3,400.0	3,397.1	3,371.1	3,371.1	6.0	5.9	78.02	689.2	574.3	887.4	875.5	11.86	74.851		
3,500.0	3,494.3	3,468.3	3,468.3	6.2	6.1	79.60	689.2	574.3	882.7	870.5	12.28	71.893		
3,600.0	3,590.2	3,564.2	3,564.2	6.5	6.2	81.50	689.2	574.3	877.9	865.1	12.75	68.832		
3,700.0	3,684.4	3,658.4	3,658.4	6.9	6.4	83.68	689.2	574.3	873.3	860.0	13.30	65.678		
3,800.0	3,776.9	3,750.9	3,750.9	7.4	6.5	86.06	689.2	574.3	869.7	855.7	13.91	62.531		
3,900.0	3,868.9	3,842.9	3,842.9	7.9	6.7	88.44	689.2	574.3	867.6	853.0	14.56	59.596		
3,965.7	3,929.4	3,903.4	3,903.4	8.2	6.8	90.00	689.2	574.3	867.2	852.2	15.00	57.796		
4,000.0	3,960.9	3,934.9	3,934.9	8.4	6.9	90.82	689.2	574.3	867.3	852.1	15.24	56.915		
4,100.0	4,052.9	4,026.9	4,026.9	8.9	7.0	93.20	689.2	574.3	868.8	852.9	15.94	54.502		
4,200.0	4,144.9	4,118.9	4,118.9	9.5	7.2	95.56	689.2	574.3	872.1	855.4	16.66	52.357		
4,300.0	4,236.9	4,210.9	4,210.9	10.1	7.3	97.91	689.2	574.3	877.1	859.7	17.38	50.471		
4,400.0	4,328.9	4,302.9	4,302.9	10.7	7.5	100.23	689.2	574.3	883.8	865.7	18.10	48.830		
4,500.0	4,420.9	4,394.9	4,394.9	11.3	7.7	102.52	689.2	574.3	892.1	873.3	18.81	47.418		
4,600.0	4,512.9	4,486.9	4,486.9	11.9	7.8	104.77	689.2	574.3	902.1	882.6	19.52	46.214		
4,700.0	4,605.0	4,579.0	4,579.0	12.6	8.0	106.97	689.2	574.3	913.7	893.5	20.21	45.202		
4,800.0	4,697.0	4,671.0	4,671.0	13.2	8.2	109.13	689.2	574.3	926.8	905.9	20.89	44.362		
4,900.0	4,789.0	4,763.0	4,763.0	13.9	8.3	111.22	689.2	574.3	941.3	919.8	21.55	43.679		
5,000.0	4,881.0	4,855.0	4,855.0	14.6	8.5	113.26	689.2	574.3	957.2	935.0	22.19	43.135		

CC - Min centre to center distance or convergent point, SF - min separation factor, ES - min ellipse separation

# Anticollision Report

<b>Company:</b>	EnCana Oil & Gas (USA) Inc	<b>Local Co-ordinate Reference:</b>	Well Sheley 3B-4H
<b>Project:</b>	DJ Wattenberg	<b>TVD Reference:</b>	KBE @ 4925.0ft (Original Well Elev)
<b>Reference Site:</b>	SWSW S4-T2N-R67W (Sheley)	<b>MD Reference:</b>	KBE @ 4925.0ft (Original Well Elev)
<b>Site Error:</b>	0.0ft	<b>North Reference:</b>	True
<b>Reference Well:</b>	Sheley 3B-4H	<b>Survey Calculation Method:</b>	Minimum Curvature
<b>Well Error:</b>	0.0ft	<b>Output errors are at</b>	2.00 sigma
<b>Reference Wellbore</b>	HZ	<b>Database:</b>	USA EDM 5000 Multi Users DB
<b>Reference Design:</b>	Plan #2	<b>Offset TVD Reference:</b>	Offset Datum

Offset Design SWSW S4-T2N-R67W (Sheley) - Sheley 1 - Existing - Existing												Offset Site Error:	0.0 ft
Survey Program: 0-MWD												Offset Well Error:	0.0 ft
Reference		Offset		Semi Major Axis		Distance		Total		Separation		Warning	
Measured Depth (ft)	Vertical Depth (ft)	Measured Depth (ft)	Vertical Depth (ft)	Reference (ft)	Offset (ft)	Highside Toolface (°)	Offset Wellbore Centre +N/-S (ft)	+E/-W (ft)	Between Centres (ft)	Between Ellipses (ft)	Uncertainty Axis		
5,100.0	4,973.0	4,947.0	4,947.0	15.2	8.6	115.24	689.2	574.3	974.5	951.7	22.81	42.718	
5,200.0	5,065.0	5,039.0	5,039.0	15.9	8.8	117.16	689.2	574.3	992.9	969.5	23.41	42.413	
7,900.0	7,212.0	7,186.0	7,186.0	26.1	12.5	90.00	689.2	574.3	924.7	896.4	28.30	32.679	
8,000.0	7,212.0	7,186.0	7,186.0	25.9	12.5	90.00	689.2	574.3	838.6	810.0	28.68	29.245	
8,100.0	7,212.0	7,186.0	7,186.0	26.0	12.5	90.00	689.2	574.3	756.1	726.6	29.41	25.706	
8,200.0	7,212.0	7,186.0	7,186.0	26.2	12.5	90.00	689.2	574.3	678.2	647.7	30.46	22.265	
8,300.0	7,212.0	7,186.0	7,186.0	26.7	12.5	90.00	689.2	574.3	606.8	575.1	31.77	19.102	
8,400.0	7,212.0	7,186.0	7,186.0	27.5	12.5	90.00	689.2	574.3	544.6	511.3	33.29	16.359	
8,500.0	7,212.0	7,186.0	7,186.0	28.6	12.5	90.00	689.2	574.3	494.8	459.9	34.98	14.148	
8,600.0	7,212.0	7,186.0	7,186.0	29.9	12.5	90.00	689.2	574.3	461.7	424.9	36.80	12.547	
8,700.0	7,212.0	7,186.0	7,186.0	31.4	12.5	90.00	689.2	574.3	448.9	410.2	38.73	11.591	
8,708.4	7,212.0	7,186.0	7,186.0	31.5	12.5	90.00	689.2	574.3	448.8	409.9	38.90	11.539 CC, ES	
8,800.0	7,212.0	7,186.0	7,186.0	33.0	12.5	90.00	689.2	574.3	458.0	417.3	40.74	11.244 SF	
8,900.0	7,212.0	7,186.0	7,186.0	34.8	12.5	90.00	689.2	574.3	488.0	445.2	42.82	11.397	
9,000.0	7,212.0	7,186.0	7,186.0	36.7	12.5	90.00	689.2	574.3	535.2	490.2	44.95	11.907	
9,100.0	7,212.0	7,186.0	7,186.0	38.6	12.5	90.00	689.2	574.3	595.6	548.5	47.13	12.639	
9,200.0	7,212.0	7,186.0	7,186.0	40.6	12.5	90.00	689.2	574.3	665.6	616.3	49.34	13.491	
9,300.0	7,212.0	7,186.0	7,186.0	42.7	12.5	90.00	689.2	574.3	742.5	691.0	51.58	14.395	
9,400.0	7,212.0	7,186.0	7,186.0	44.8	12.5	90.00	689.2	574.3	824.4	770.6	53.85	15.309	
9,500.0	7,212.0	7,186.0	7,186.0	46.9	12.5	90.00	689.2	574.3	909.9	853.8	56.14	16.208	
9,600.0	7,212.0	7,186.0	7,186.0	49.1	12.5	90.00	689.2	574.3	998.2	939.7	58.45	17.077	



# Anticollision Report

<b>Company:</b>	EnCana Oil & Gas (USA) Inc	<b>Local Co-ordinate Reference:</b>	Well Sheley 3B-4H
<b>Project:</b>	DJ Wattenberg	<b>TVD Reference:</b>	KBE @ 4925.0ft (Original Well Elev)
<b>Reference Site:</b>	SWSW S4-T2N-R67W (Sheley)	<b>MD Reference:</b>	KBE @ 4925.0ft (Original Well Elev)
<b>Site Error:</b>	0.0ft	<b>North Reference:</b>	True
<b>Reference Well:</b>	Sheley 3B-4H	<b>Survey Calculation Method:</b>	Minimum Curvature
<b>Well Error:</b>	0.0ft	<b>Output errors are at</b>	2.00 sigma
<b>Reference Wellbore</b>	HZ	<b>Database:</b>	USA EDM 5000 Multi Users DB
<b>Reference Design:</b>	Plan #2	<b>Offset TVD Reference:</b>	Offset Datum

Offset Design SWSW S4-T2N-R67W (Sheley) - Sheley 13-4 (Existing) - Existing - Existing													Offset Site Error: 0.0 ft	
Survey Program: 0-MWD													Offset Well Error: 0.0 ft	
Reference		Offset		Semi Major Axis			Distance						Warning	
Measured Depth	Vertical Depth	Measured Depth	Vertical Depth	Reference	Offset	Highside Toolface	Offset Wellbore Centre	Between Centres	Between Ellipses	Total Uncertainty	Separation Factor			
(ft)	(ft)	(ft)	(ft)	(ft)	(ft)	(°)	+N/-S (ft)	+E/-W (ft)	(ft)	(ft)	Axis			
5,000.0	4,881.0	4,845.0	4,845.0	14.6	8.5	37.33	1,503.4	-372.5	985.5	966.2	19.30	51.066		
5,100.0	4,973.0	4,937.0	4,937.0	15.2	8.6	38.72	1,503.4	-372.5	953.7	933.6	20.03	47.608		
5,200.0	5,065.0	5,029.0	5,029.0	15.9	8.8	40.19	1,503.4	-372.5	922.4	901.6	20.80	44.338		
5,300.0	5,157.0	5,121.0	5,121.0	16.6	8.9	41.76	1,503.4	-372.5	891.8	870.2	21.62	41.254		
5,400.0	5,249.0	5,213.0	5,213.0	17.3	9.1	43.43	1,503.4	-372.5	861.9	839.4	22.47	38.351		
5,500.0	5,341.0	5,305.0	5,305.0	17.9	9.3	45.21	1,503.4	-372.5	832.7	809.4	23.37	35.626		
5,600.0	5,433.0	5,397.0	5,397.0	18.6	9.4	47.11	1,503.4	-372.5	804.4	780.1	24.32	33.077		
5,700.0	5,525.0	5,489.0	5,489.0	19.3	9.6	49.13	1,503.4	-372.5	777.1	751.8	25.31	30.701		
5,800.0	5,617.0	5,581.0	5,581.0	20.0	9.7	51.28	1,503.4	-372.5	750.8	724.4	26.35	28.494		
5,900.0	5,709.0	5,673.0	5,673.0	20.7	9.9	53.57	1,503.4	-372.5	725.7	698.2	27.43	26.453		
6,000.0	5,801.0	5,765.0	5,765.0	21.4	10.1	56.01	1,503.4	-372.5	701.8	673.3	28.55	24.578		
6,100.0	5,893.0	5,857.0	5,857.0	22.1	10.2	58.59	1,503.4	-372.5	679.4	649.7	29.71	22.864		
6,200.0	5,985.0	5,949.0	5,949.0	22.8	10.4	61.32	1,503.4	-372.5	658.5	627.6	30.91	21.308		
6,300.0	6,077.0	6,041.0	6,041.0	23.5	10.5	64.21	1,503.4	-372.5	639.4	607.3	32.12	19.908		
6,400.0	6,169.0	6,133.0	6,133.0	24.2	10.7	67.24	1,503.4	-372.5	622.1	588.8	33.34	18.660		
6,500.0	6,261.0	6,225.0	6,225.0	24.9	10.9	70.41	1,503.4	-372.5	606.9	572.4	34.56	17.560		
6,600.0	6,353.0	6,317.0	6,317.0	25.6	11.0	73.71	1,503.4	-372.5	593.9	558.2	35.77	16.605		
6,700.0	6,445.1	6,409.1	6,409.1	26.3	11.2	77.13	1,503.4	-372.5	583.3	546.3	36.94	15.790		
6,800.0	6,537.1	6,501.1	6,501.1	27.0	11.3	80.64	1,503.4	-372.5	575.1	537.0	38.06	15.110		
6,900.0	6,629.6	6,593.6	6,593.6	27.7	11.5	72.48	1,503.4	-372.5	567.9	528.9	38.94	14.583		
7,000.0	6,724.5	6,688.5	6,688.5	28.1	11.7	41.61	1,503.4	-372.5	551.0	512.1	38.93	14.156		
7,100.0	6,819.1	6,783.1	6,783.1	28.4	11.8	10.42	1,503.4	-372.5	521.8	483.8	37.99	13.734		
7,200.0	6,909.9	6,873.9	6,873.9	28.5	12.0	-11.06	1,503.4	-372.5	480.3	444.0	36.23	13.255		
7,300.0	6,993.6	6,957.6	6,957.6	28.4	12.1	-28.23	1,503.4	-372.5	428.1	394.2	33.90	12.630		
7,400.0	7,067.0	7,031.0	7,031.0	28.1	12.3	-46.13	1,503.4	-372.5	369.1	337.6	31.48	11.724		
7,500.0	7,127.5	7,091.5	7,091.5	27.7	12.4	-65.40	1,503.4	-372.5	310.1	280.6	29.56	10.493		
7,600.0	7,172.8	7,136.8	7,136.8	27.3	12.5	-81.79	1,503.4	-372.5	264.1	235.7	28.37	9.308		
7,686.1	7,198.4	7,162.4	7,162.4	26.9	12.5	-90.00	1,503.4	-372.5	248.8	220.8	27.98	8.891	CC, ES, SF	
7,700.0	7,201.3	7,165.3	7,165.3	26.8	12.5	-90.71	1,503.4	-372.5	249.3	221.3	27.96	8.916		
7,800.0	7,211.9	7,175.9	7,175.9	26.4	12.5	-90.46	1,503.4	-372.5	276.7	248.5	28.23	9.801		
7,900.0	7,212.0	7,176.0	7,176.0	26.1	12.5	-90.00	1,503.4	-372.5	335.7	307.4	28.28	11.870		
8,000.0	7,212.0	7,176.0	7,176.0	25.9	12.5	-90.00	1,503.4	-372.5	410.8	382.2	28.66	14.335		
8,100.0	7,212.0	7,176.0	7,176.0	26.0	12.5	-90.00	1,503.4	-372.5	494.9	465.5	29.39	16.836		
8,200.0	7,212.0	7,176.0	7,176.0	26.2	12.5	-90.00	1,503.4	-372.5	584.0	553.5	30.44	19.183		
8,300.0	7,212.0	7,176.0	7,176.0	26.7	12.5	-90.00	1,503.4	-372.5	676.1	644.4	31.75	21.295		
8,400.0	7,212.0	7,176.0	7,176.0	27.5	12.5	-90.00	1,503.4	-372.5	770.2	737.0	33.27	23.151		
8,500.0	7,212.0	7,176.0	7,176.0	28.6	12.5	-90.00	1,503.4	-372.5	865.7	830.7	34.96	24.762		
8,600.0	7,212.0	7,176.0	7,176.0	29.9	12.5	-90.00	1,503.4	-372.5	962.0	925.2	36.78	26.156		

# Anticollision Report

<b>Company:</b>	EnCana Oil & Gas (USA) Inc	<b>Local Co-ordinate Reference:</b>	Well Sheley 3B-4H
<b>Project:</b>	DJ Wattenberg	<b>TVD Reference:</b>	KBE @ 4925.0ft (Original Well Elev)
<b>Reference Site:</b>	SWSW S4-T2N-R67W (Sheley)	<b>MD Reference:</b>	KBE @ 4925.0ft (Original Well Elev)
<b>Site Error:</b>	0.0ft	<b>North Reference:</b>	True
<b>Reference Well:</b>	Sheley 3B-4H	<b>Survey Calculation Method:</b>	Minimum Curvature
<b>Well Error:</b>	0.0ft	<b>Output errors are at</b>	2.00 sigma
<b>Reference Wellbore</b>	HZ	<b>Database:</b>	USA EDM 5000 Multi Users DB
<b>Reference Design:</b>	Plan #2	<b>Offset TVD Reference:</b>	Offset Datum

Offset Design SWSW S4-T2N-R67W (Sheley) - Sheley 14-4 (Existing) - Existing - Existing													Offset Site Error:	0.0 ft
Survey Program: 0-MWD													Offset Well Error:	0.0 ft
Reference		Offset		Semi Major Axis			Distance				Total Uncertainty Axis	Separation Factor	Warning	
Measured Depth (ft)	Vertical Depth (ft)	Measured Depth (ft)	Vertical Depth (ft)	Reference (ft)	Offset (ft)	Highside Toolface (°)	Offset Wellbore Centre +N/-S (ft)	+E/-W (ft)	Between Centres (ft)	Between Ellipses (ft)				
0.0	0.0	0.0	0.0	0.0	0.0	165.25	-37.2	9.8	41.3					
100.0	100.0	85.0	85.0	0.2	0.1	165.25	-37.2	9.8	38.4	38.1	0.30	127.993		
200.0	200.0	185.0	185.0	0.3	0.3	165.25	-37.2	9.8	38.4	37.8	0.65	59.185		
300.0	300.0	285.0	285.0	0.5	0.5	165.25	-37.2	9.8	38.4	37.4	1.00	38.491		
400.0	400.0	385.0	385.0	0.7	0.7	165.25	-37.2	9.8	38.4	37.1	1.35	28.519		
500.0	500.0	485.0	485.0	0.8	0.8	165.25	-37.2	9.8	38.4	36.7	1.70	22.651		
600.0	600.0	585.0	585.0	1.0	1.0	165.25	-37.2	9.8	38.4	36.4	2.05	18.786		
700.0	700.0	685.0	685.0	1.2	1.2	165.25	-37.2	9.8	38.4	36.0	2.39	16.047		
800.0	800.0	785.0	785.0	1.4	1.4	165.25	-37.2	9.8	38.4	35.7	2.74	14.006		
900.0	900.0	885.0	885.0	1.5	1.5	165.25	-37.2	9.8	38.4	35.3	3.09	12.425		
1,000.0	1,000.0	985.0	985.0	1.7	1.7	165.25	-37.2	9.8	38.4	35.0	3.44	11.165		
1,100.0	1,100.0	1,085.0	1,085.0	1.9	1.9	165.25	-37.2	9.8	38.4	34.6	3.79	10.137		
1,200.0	1,200.0	1,185.0	1,185.0	2.1	2.1	165.25	-37.2	9.8	38.4	34.3	4.14	9.282		
1,300.0	1,300.0	1,285.0	1,285.0	2.2	2.2	165.25	-37.2	9.8	38.4	33.9	4.49	8.560		
1,400.0	1,400.0	1,385.0	1,385.0	2.4	2.4	165.25	-37.2	9.8	38.4	33.6	4.84	7.943		
1,500.0	1,500.0	1,485.0	1,485.0	2.6	2.6	165.25	-37.2	9.8	38.4	33.2	5.19	7.408		
1,600.0	1,600.0	1,585.0	1,585.0	2.8	2.8	165.25	-37.2	9.8	38.4	32.9	5.54	6.941		
1,700.0	1,700.0	1,685.0	1,685.0	2.9	2.9	165.25	-37.2	9.8	38.4	32.5	5.89	6.529		
1,800.0	1,800.0	1,785.0	1,785.0	3.1	3.1	165.25	-37.2	9.8	38.4	32.2	6.23	6.164		
1,900.0	1,900.0	1,885.0	1,885.0	3.3	3.3	165.25	-37.2	9.8	38.4	31.8	6.58	5.837		
2,000.0	2,000.0	1,985.0	1,985.0	3.5	3.5	165.25	-37.2	9.8	38.4	31.5	6.93	5.543		
2,100.0	2,100.0	2,085.0	2,085.0	3.6	3.6	165.25	-37.2	9.8	38.4	31.1	7.28	5.277		
2,200.0	2,200.0	2,185.0	2,185.0	3.8	3.8	165.25	-37.2	9.8	38.4	30.8	7.63	5.036		
2,300.0	2,300.0	2,285.0	2,285.0	4.0	4.0	165.25	-37.2	9.8	38.4	30.4	7.98	4.816		
2,400.0	2,400.0	2,385.0	2,385.0	4.2	4.2	165.25	-37.2	9.8	38.4	30.1	8.33	4.614		
2,500.0	2,500.0	2,485.0	2,485.0	4.3	4.3	165.25	-37.2	9.8	38.4	29.7	8.68	4.428		
2,600.0	2,600.0	2,585.0	2,585.0	4.5	4.5	165.25	-37.2	9.8	38.4	29.4	9.03	4.257		
2,700.0	2,700.0	2,685.0	2,685.0	4.7	4.7	165.25	-37.2	9.8	38.4	29.1	9.38	4.098		
2,800.0	2,800.0	2,785.0	2,785.0	4.9	4.9	165.25	-37.2	9.8	38.4	28.7	9.72	3.951		
2,900.0	2,900.0	2,885.0	2,885.0	5.0	5.0	165.25	-37.2	9.8	38.4	28.4	10.07	3.814		
3,000.0	3,000.0	2,985.0	2,985.0	5.2	5.2	165.25	-37.2	9.8	38.4	28.0	10.42	3.687	CC, ES, SF	
3,100.0	3,100.0	3,085.0	3,085.0	5.4	5.4	-160.66	-37.2	9.8	40.9	30.1	10.76	3.799		
3,200.0	3,199.6	3,184.6	3,184.6	5.6	5.6	-163.68	-37.2	9.8	48.4	37.3	11.08	4.363		
3,300.0	3,298.8	3,283.8	3,283.8	5.8	5.7	-167.04	-37.2	9.8	61.0	49.6	11.38	5.359		
3,400.0	3,397.1	3,382.1	3,382.1	6.0	5.9	-169.91	-37.2	9.8	78.9	67.2	11.66	6.766		
3,500.0	3,494.3	3,479.3	3,479.3	6.2	6.1	-172.11	-37.2	9.8	101.9	90.0	11.91	8.562		
3,600.0	3,590.2	3,575.2	3,575.2	6.5	6.2	-173.73	-37.2	9.8	130.1	118.0	12.13	10.728		
3,700.0	3,684.4	3,669.4	3,669.4	6.9	6.4	-174.92	-37.2	9.8	163.4	151.1	12.33	13.250		
3,800.0	3,776.9	3,761.9	3,761.9	7.4	6.6	-175.81	-37.2	9.8	201.3	188.7	12.56	16.032		
3,900.0	3,868.9	3,853.9	3,853.9	7.9	6.7	-176.50	-37.2	9.8	240.4	227.5	12.89	18.650		
4,000.0	3,960.9	3,945.9	3,945.9	8.4	6.9	-176.99	-37.2	9.8	279.5	266.3	13.22	21.137		
4,100.0	4,052.9	4,037.9	4,037.9	8.9	7.0	-177.36	-37.2	9.8	318.7	305.1	13.56	23.503		
4,200.0	4,144.9	4,129.9	4,129.9	9.5	7.2	-177.65	-37.2	9.8	357.8	343.9	13.89	25.756		
4,300.0	4,236.9	4,221.9	4,221.9	10.1	7.4	-177.88	-37.2	9.8	397.0	382.8	14.23	27.904		
4,400.0	4,328.9	4,313.9	4,313.9	10.7	7.5	-178.07	-37.2	9.8	436.1	421.6	14.56	29.954		
4,500.0	4,420.9	4,405.9	4,405.9	11.3	7.7	-178.23	-37.2	9.8	475.3	460.4	14.89	31.913		
4,600.0	4,512.9	4,497.9	4,497.9	11.9	7.9	-178.36	-37.2	9.8	514.5	499.2	15.23	33.787		
4,700.0	4,605.0	4,590.0	4,590.0	12.6	8.0	-178.48	-37.2	9.8	553.6	538.1	15.56	35.581		
4,800.0	4,697.0	4,682.0	4,682.0	13.2	8.2	-178.58	-37.2	9.8	592.8	576.9	15.89	37.300		
4,900.0	4,789.0	4,774.0	4,774.0	13.9	8.3	-178.67	-37.2	9.8	632.0	615.8	16.23	38.948		
5,000.0	4,881.0	4,866.0	4,866.0	14.6	8.5	-178.75	-37.2	9.8	671.2	654.6	16.56	40.531		
5,100.0	4,973.0	4,958.0	4,958.0	15.2	8.7	-178.81	-37.2	9.8	710.3	693.4	16.89	42.052		

CC - Min centre to center distance or convergent point, SF - min separation factor, ES - min ellipse separation

## Anticollision Report

<b>Company:</b>	EnCana Oil & Gas (USA) Inc	<b>Local Co-ordinate Reference:</b>	Well Sheley 3B-4H
<b>Project:</b>	DJ Wattenberg	<b>TVD Reference:</b>	KBE @ 4925.0ft (Original Well Elev)
<b>Reference Site:</b>	SWSW S4-T2N-R67W (Sheley)	<b>MD Reference:</b>	KBE @ 4925.0ft (Original Well Elev)
<b>Site Error:</b>	0.0ft	<b>North Reference:</b>	True
<b>Reference Well:</b>	Sheley 3B-4H	<b>Survey Calculation Method:</b>	Minimum Curvature
<b>Well Error:</b>	0.0ft	<b>Output errors are at</b>	2.00 sigma
<b>Reference Wellbore</b>	HZ	<b>Database:</b>	USA EDM 5000 Multi Users DB
<b>Reference Design:</b>	Plan #2	<b>Offset TVD Reference:</b>	Offset Datum

<b>Offset Design</b> SWSW S4-T2N-R67W (Sheley) - Sheley 14-4 (Existing) - Existing - Existing												<b>Offset Site Error:</b>	0.0 ft
Survey Program: 0-MWD												<b>Offset Well Error:</b>	0.0 ft
Reference		Offset		Semi Major Axis			Distance						Warning
Measured Depth (ft)	Vertical Depth (ft)	Measured Depth (ft)	Vertical Depth (ft)	Reference (ft)	Offset (ft)	Highside Toolface (°)	Offset Wellbore Centre +N/-S (ft)	+E/-W (ft)	Between Centres (ft)	Between Ellipses (ft)	Total Uncertainty Axis	Separation Factor	
5,200.0	5,065.0	5,050.0	5,050.0	15.9	8.8	-178.88	-37.2	9.8	749.5	732.3	17.22	43.514	
5,300.0	5,157.0	5,142.0	5,142.0	16.6	9.0	-178.93	-37.2	9.8	788.7	771.1	17.56	44.922	
5,400.0	5,249.0	5,234.0	5,234.0	17.3	9.1	-178.98	-37.2	9.8	827.8	810.0	17.89	46.277	
5,500.0	5,341.0	5,326.0	5,326.0	17.9	9.3	-179.03	-37.2	9.8	867.0	848.8	18.22	47.583	
5,600.0	5,433.0	5,418.0	5,418.0	18.6	9.5	-179.07	-37.2	9.8	906.2	887.6	18.55	48.843	
5,700.0	5,525.0	5,510.0	5,510.0	19.3	9.6	-179.11	-37.2	9.8	945.4	926.5	18.89	50.058	
5,800.0	5,617.0	5,602.0	5,602.0	20.0	9.8	-179.14	-37.2	9.8	984.6	965.3	19.22	51.232	

# Anticollision Report

<b>Company:</b>	EnCana Oil & Gas (USA) Inc	<b>Local Co-ordinate Reference:</b>	Well Sheley 3B-4H
<b>Project:</b>	DJ Wattenberg	<b>TVD Reference:</b>	KBE @ 4925.0ft (Original Well Elev)
<b>Reference Site:</b>	SWSW S4-T2N-R67W (Sheley)	<b>MD Reference:</b>	KBE @ 4925.0ft (Original Well Elev)
<b>Site Error:</b>	0.0ft	<b>North Reference:</b>	True
<b>Reference Well:</b>	Sheley 3B-4H	<b>Survey Calculation Method:</b>	Minimum Curvature
<b>Well Error:</b>	0.0ft	<b>Output errors are at</b>	2.00 sigma
<b>Reference Wellbore</b>	HZ	<b>Database:</b>	USA EDM 5000 Multi Users DB
<b>Reference Design:</b>	Plan #2	<b>Offset TVD Reference:</b>	Offset Datum

Offset Design SWSW S4-T2N-R67W (Sheley) - Sheley 23-4 (Existing) - Existing - Existing													Offset Site Error:	0.0 ft
Survey Program: 0-MWD													Offset Well Error:	0.0 ft
Reference		Offset		Semi Major Axis			Distance						Warning	
Measured Depth (ft)	Vertical Depth (ft)	Measured Depth (ft)	Vertical Depth (ft)	Reference (ft)	Offset (ft)	Highside Toolface (°)	Offset Wellbore Centre +N/-S (ft)	+E/-W (ft)	Between Centres (ft)	Between Ellipses (ft)	Total Uncertainty Axis	Separation Factor		
8,500.0	7,212.0	7,181.0	7,181.0	28.6	12.5	-90.00	1,464.1	1,320.8	948.7	913.7	34.97	27.130		
8,600.0	7,212.0	7,181.0	7,181.0	29.9	12.5	-90.00	1,464.1	1,320.8	859.6	822.9	36.79	23.367		
8,700.0	7,212.0	7,181.0	7,181.0	31.4	12.5	-90.00	1,464.1	1,320.8	773.3	734.6	38.72	19.974		
8,800.0	7,212.0	7,181.0	7,181.0	33.0	12.5	-90.00	1,464.1	1,320.8	690.7	649.9	40.73	16.958		
8,900.0	7,212.0	7,181.0	7,181.0	34.8	12.5	-90.00	1,464.1	1,320.8	613.2	570.4	42.81	14.326		
9,000.0	7,212.0	7,181.0	7,181.0	36.7	12.5	-90.00	1,464.1	1,320.8	543.2	498.3	44.94	12.088		
9,100.0	7,212.0	7,181.0	7,181.0	38.6	12.5	-90.00	1,464.1	1,320.8	483.8	436.7	47.12	10.269		
9,200.0	7,212.0	7,181.0	7,181.0	40.6	12.5	-90.00	1,464.1	1,320.8	439.5	390.1	49.33	8.908		
9,300.0	7,212.0	7,181.0	7,181.0	42.7	12.5	-90.00	1,464.1	1,320.8	414.9	363.3	51.57	8.045		
9,354.9	7,212.0	7,181.0	7,181.0	43.8	12.5	-90.00	1,464.1	1,320.8	411.2	358.4	52.82	7.786 CC, ES		
9,400.0	7,212.0	7,181.0	7,181.0	44.8	12.5	-90.00	1,464.1	1,320.8	413.7	359.9	53.84	7.684 SF		
9,500.0	7,212.0	7,181.0	7,181.0	46.9	12.5	-90.00	1,464.1	1,320.8	436.1	380.0	56.13	7.769		
9,600.0	7,212.0	7,181.0	7,181.0	49.1	12.5	-90.00	1,464.1	1,320.8	478.8	420.3	58.44	8.192		
9,700.0	7,212.0	7,181.0	7,181.0	51.3	12.5	-90.00	1,464.1	1,320.8	536.9	476.1	60.76	8.835		
9,800.0	7,212.0	7,181.0	7,181.0	53.5	12.5	-90.00	1,464.1	1,320.8	606.0	542.9	63.10	9.604		
9,900.0	7,212.0	7,181.0	7,181.0	55.7	12.5	-90.00	1,464.1	1,320.8	682.8	617.4	65.45	10.433		
10,000.0	7,212.0	7,181.0	7,181.0	58.0	12.5	-90.00	1,464.1	1,320.8	765.0	697.2	67.81	11.282		
10,100.0	7,212.0	7,181.0	7,181.0	60.3	12.5	-90.00	1,464.1	1,320.8	851.1	780.9	70.18	12.127		
10,200.0	7,212.0	7,181.0	7,181.0	62.6	12.5	-90.00	1,464.1	1,320.8	939.9	867.3	72.55	12.954		

CC - Min centre to center distance or convergent point, SF - min separation factor, ES - min ellipse separation

# Anticollision Report

<b>Company:</b>	EnCana Oil & Gas (USA) Inc	<b>Local Co-ordinate Reference:</b>	Well Sheley 3B-4H
<b>Project:</b>	DJ Wattenberg	<b>TVD Reference:</b>	KBE @ 4925.0ft (Original Well Elev)
<b>Reference Site:</b>	SWSW S4-T2N-R67W (Sheley)	<b>MD Reference:</b>	KBE @ 4925.0ft (Original Well Elev)
<b>Site Error:</b>	0.0ft	<b>North Reference:</b>	True
<b>Reference Well:</b>	Sheley 3B-4H	<b>Survey Calculation Method:</b>	Minimum Curvature
<b>Well Error:</b>	0.0ft	<b>Output errors are at</b>	2.00 sigma
<b>Reference Wellbore</b>	HZ	<b>Database:</b>	USA EDM 5000 Multi Users DB
<b>Reference Design:</b>	Plan #2	<b>Offset TVD Reference:</b>	Offset Datum

Offset Design SWSW S4-T2N-R67W (Sheley) - Sheley 3A-4H - HZ - Plan #2													Offset Site Error:	0.0 ft
Survey Program: 0-MWD													Offset Well Error:	0.0 ft
Reference		Offset		Semi Major Axis		Distance		Total		Separation		Warning		
Measured Depth (ft)	Vertical Depth (ft)	Measured Depth (ft)	Vertical Depth (ft)	Reference (ft)	Offset (ft)	Highside Toolface (°)	Offset Wellbore Centre +N/-S (ft)	+E/-W (ft)	Between Centres (ft)	Between Ellipses (ft)	Uncertainty Axis			
0.0	0.0	0.0	0.0	0.0	0.0	-173.75	-25.5	-2.8	25.7	25.3	0.30	84.470		
100.0	100.0	100.0	100.0	0.2	0.2	-173.75	-25.5	-2.8	25.7	25.0	0.65	39.299		
200.0	200.0	200.0	200.0	0.3	0.3	-173.75	-25.5	-2.8	25.7	24.7	1.00	25.606		
300.0	300.0	300.0	300.0	0.5	0.5	-173.75	-25.5	-2.8	25.7	24.3	1.35	18.989		
400.0	400.0	400.0	400.0	0.7	0.7	-173.75	-25.5	-2.8	25.7	24.0	1.70	15.090		
500.0	500.0	500.0	500.0	0.8	0.8	-173.75	-25.5	-2.8	25.7	23.6	2.05	12.519		
600.0	600.0	600.0	600.0	1.0	1.0	-173.75	-25.5	-2.8	25.7	23.3	2.40	10.697		
700.0	700.0	700.0	700.0	1.2	1.2	-173.75	-25.5	-2.8	25.7	22.9	2.75	9.338		
800.0	800.0	800.0	800.0	1.4	1.4	-173.75	-25.5	-2.8	25.7	22.6	3.10	8.285		
900.0	900.0	900.0	900.0	1.5	1.5	-173.75	-25.5	-2.8	25.7	22.2	3.45	7.446		
1,000.0	1,000.0	1,000.0	1,000.0	1.7	1.7	-173.75	-25.5	-2.8	25.7	21.9	3.79	6.761		
1,100.0	1,100.0	1,100.0	1,100.0	1.9	1.9	-173.75	-25.5	-2.8	25.7	21.5	4.14	6.191		
1,200.0	1,200.0	1,200.0	1,200.0	2.1	2.1	-173.75	-25.5	-2.8	25.7	21.2	4.49	5.710		
1,300.0	1,300.0	1,300.0	1,300.0	2.2	2.2	-173.75	-25.5	-2.8	25.7	20.8	4.84	5.298		
1,400.0	1,400.0	1,400.0	1,400.0	2.4	2.4	-173.75	-25.5	-2.8	25.7	20.5	5.19	4.942		
1,500.0	1,500.0	1,500.0	1,500.0	2.6	2.6	-173.75	-25.5	-2.8	25.7	20.1	5.54	4.631		
1,600.0	1,600.0	1,600.0	1,600.0	2.8	2.8	-173.75	-25.5	-2.8	25.7	19.8	5.89	4.356		
1,700.0	1,700.0	1,700.0	1,700.0	2.9	2.9	-173.75	-25.5	-2.8	25.7	19.4	6.24	4.112		
1,800.0	1,800.0	1,800.0	1,800.0	3.1	3.1	-173.75	-25.5	-2.8	25.7	19.1	6.59	3.894		
1,900.0	1,900.0	1,900.0	1,900.0	3.3	3.3	-173.75	-25.5	-2.8	25.7	18.7	6.94	3.698		
2,000.0	2,000.0	2,000.0	2,000.0	3.5	3.5	-173.75	-25.5	-2.8	25.7	18.4	7.29	3.521		
2,100.0	2,100.0	2,100.0	2,100.0	3.6	3.6	-173.75	-25.5	-2.8	25.7	18.0	7.63	3.360		
2,200.0	2,200.0	2,200.0	2,200.0	3.8	3.8	-173.75	-25.5	-2.8	25.7	17.7	7.98	3.213		
2,300.0	2,300.0	2,300.0	2,300.0	4.0	4.0	-173.75	-25.5	-2.8	25.7	17.3	8.33	3.079		
2,400.0	2,400.0	2,400.0	2,400.0	4.2	4.2	-173.75	-25.5	-2.8	25.7	17.0	8.68	2.955		
2,500.0	2,500.0	2,500.0	2,500.0	4.3	4.3	-173.75	-25.5	-2.8	25.7	16.6	9.03	2.841		
2,600.0	2,600.0	2,600.0	2,600.0	4.5	4.5	-173.75	-25.5	-2.8	25.7	16.3	9.38	2.735		
2,700.0	2,700.0	2,700.0	2,700.0	4.7	4.7	-173.75	-25.5	-2.8	25.7	15.9	9.73	2.637		
2,800.0	2,800.0	2,800.0	2,800.0	4.9	4.9	-173.75	-25.5	-2.8	25.7	15.6	10.08	2.546		
2,900.0	2,900.0	2,900.0	2,900.0	5.0	5.0	-173.75	-25.5	-2.8	25.7	15.2	10.43	2.460 CC, ES, SF		
3,000.0	3,000.0	3,000.0	3,000.0	5.2	5.2	-173.75	-25.5	-2.8	25.7	16.8	10.77	2.555		
3,100.0	3,100.0	3,100.0	3,100.0	5.4	5.4	-136.52	-25.1	-5.4	27.5	22.2	11.12	2.993		
3,200.0	3,199.6	3,199.8	3,199.4	5.6	5.6	-132.19	-24.0	-13.1	33.3	31.6	11.48	3.752		
3,300.0	3,298.8	3,299.0	3,297.8	5.8	5.8	-127.55	-22.1	-25.9	43.1	45.1	11.88	4.797		
3,400.0	3,397.1	3,397.5	3,394.7	6.0	6.0	-123.68	-19.5	-43.6	57.0	62.5	12.34	6.068		
3,500.0	3,494.3	3,495.5	3,490.1	6.2	6.2	-121.10	-16.3	-65.6	74.9	82.8	12.83	7.452		
3,600.0	3,590.2	3,593.3	3,585.2	6.5	6.5	-121.56	-12.9	-88.2	95.6	105.8	13.35	8.924		
3,700.0	3,684.4	3,690.3	3,679.5	6.9	6.8	-123.77	-9.6	-110.8	119.2	131.9	13.91	10.483		
3,800.0	3,776.9	3,786.4	3,772.9	7.4	7.1	-126.84	-6.3	-133.0	145.8	159.0	14.52	11.952		
3,900.0	3,868.9	3,882.2	3,866.0	7.9	7.4	-129.60	-3.0	-155.3	173.5	186.4	15.16	13.296		
4,000.0	3,960.9	3,978.0	3,959.1	8.4	7.7	-131.60	0.2	-177.5	201.5	213.9	15.82	14.519		
4,100.0	4,052.9	4,073.8	4,052.2	8.9	8.0	-133.12	3.5	-199.7	229.7	241.5	16.51	15.632		
4,200.0	4,144.9	4,169.6	4,145.4	9.5	8.4	-134.30	6.8	-221.9	258.0	269.2	17.21	16.644		
4,300.0	4,236.9	4,265.4	4,238.5	10.1	8.7	-135.25	10.1	-244.2	286.4	296.9	17.92	17.565		
4,400.0	4,328.9	4,361.2	4,331.6	10.7	9.1	-136.03	13.3	-266.4	314.8	324.7	18.65	18.405		
4,500.0	4,420.9	4,456.9	4,424.7	11.3	9.4	-136.68	16.6	-288.6	343.3	352.4	19.40	19.172		
4,600.0	4,512.9	4,552.7	4,517.8	11.9	9.8	-137.23	19.9	-310.8	371.8	380.2	20.15	19.874		
4,700.0	4,605.0	4,648.5	4,611.0	12.6	10.2	-137.70	23.2	-333.1	400.4	408.0	20.91	20.517		
4,800.0	4,697.0	4,744.3	4,704.1	13.2	10.6	-138.11	26.4	-355.3	428.9	435.9	21.67	21.109		
4,900.0	4,789.0	4,840.1	4,797.2	13.9	10.9	-138.46	29.7	-377.5	457.5	463.7	22.45	21.654		
5,000.0	4,881.0	4,935.9	4,890.3	14.6	11.3	-138.78	33.0	-399.7	486.1	491.5	23.23	22.157		
5,100.0	4,973.0	5,031.7	4,983.4	15.2	11.7	-139.06	36.2	-422.0	514.7					

CC - Min centre to center distance or convergent point, SF - min separation factor, ES - min ellipse separation

# Anticollision Report

<b>Company:</b>	EnCana Oil & Gas (USA) Inc	<b>Local Co-ordinate Reference:</b>	Well Sheley 3B-4H
<b>Project:</b>	DJ Wattenberg	<b>TVD Reference:</b>	KBE @ 4925.0ft (Original Well Elev)
<b>Reference Site:</b>	SWSW S4-T2N-R67W (Sheley)	<b>MD Reference:</b>	KBE @ 4925.0ft (Original Well Elev)
<b>Site Error:</b>	0.0ft	<b>North Reference:</b>	True
<b>Reference Well:</b>	Sheley 3B-4H	<b>Survey Calculation Method:</b>	Minimum Curvature
<b>Well Error:</b>	0.0ft	<b>Output errors are at</b>	2.00 sigma
<b>Reference Wellbore</b>	HZ	<b>Database:</b>	USA EDM 5000 Multi Users DB
<b>Reference Design:</b>	Plan #2	<b>Offset TVD Reference:</b>	Offset Datum

Offset Design SWSW S4-T2N-R67W (Sheley) - Sheley 3A-4H - HZ - Plan #2													Offset Site Error:	0.0 ft
Survey Program: 0-MWD													Offset Well Error:	0.0 ft
Reference		Offset		Semi Major Axis			Distance				Total		Warning	
Measured Depth (ft)	Vertical Depth (ft)	Measured Depth (ft)	Vertical Depth (ft)	Reference (ft)	Offset (ft)	Highside Toolface (°)	Offset Wellbore Centre +N/-S (ft)	+E/-W (ft)	Between Centres (ft)	Between Ellipses (ft)	Uncertainty Axis	Separation Factor		
5,200.0	5,065.0	5,127.5	5,076.6	15.9	12.1	-139.31	39.5	-444.2	543.4	519.3	24.02	22.622		
5,300.0	5,157.0	5,223.3	5,169.7	16.6	12.5	-139.54	42.8	-466.4	572.0	547.2	24.81	23.053		
5,400.0	5,249.0	5,319.1	5,262.8	17.3	12.9	-139.74	46.1	-488.6	600.6	575.0	25.61	23.454		
5,500.0	5,341.0	5,414.9	5,355.9	17.9	13.3	-139.93	49.3	-510.9	629.3	602.9	26.41	23.827		
5,600.0	5,433.0	5,510.6	5,449.0	18.6	13.7	-140.10	52.6	-533.1	657.9	630.7	27.22	24.175		
5,700.0	5,525.0	5,606.4	5,542.2	19.3	14.1	-140.25	55.9	-555.3	686.6	658.5	28.02	24.499		
5,800.0	5,617.0	5,702.2	5,635.3	20.0	14.5	-140.40	59.2	-577.5	715.2	686.4	28.84	24.803		
5,900.0	5,709.0	5,798.0	5,728.4	20.7	14.9	-140.53	62.4	-599.8	743.9	714.2	29.65	25.088		
6,000.0	5,801.0	5,893.8	5,821.5	21.4	15.3	-140.65	65.7	-622.0	772.6	742.1	30.47	25.356		
6,100.0	5,893.0	5,989.6	5,914.6	22.1	15.7	-140.77	69.0	-644.2	801.2	769.9	31.29	25.607		
6,200.0	5,985.0	6,085.4	6,007.8	22.8	16.2	-140.87	72.3	-666.4	829.9	797.8	32.11	25.844		
6,300.0	6,077.0	6,181.2	6,100.9	23.5	16.6	-140.97	75.5	-688.7	858.6	825.6	32.94	26.068		
6,400.0	6,169.0	6,277.0	6,194.0	24.2	17.0	-141.06	78.8	-710.9	887.2	853.5	33.76	26.279		
6,500.0	6,261.0	6,372.8	6,287.1	24.9	17.4	-141.15	82.1	-733.1	915.9	881.3	34.59	26.479		
6,600.0	6,353.0	6,468.6	6,380.2	25.6	17.8	-141.23	85.4	-755.3	944.6	909.2	35.42	26.668		
6,700.0	6,445.1	6,564.4	6,473.3	26.3	18.2	-141.31	88.6	-777.6	973.3	937.0	36.25	26.847		
9,600.0	7,212.0	9,403.8	7,232.0	49.1	46.9	91.15	30.2	1,479.2	996.7	904.1	92.54	10.770		
9,700.0	7,212.0	9,503.5	7,232.0	51.3	49.3	91.16	26.7	1,578.7	987.9	890.8	97.19	10.165		
9,800.0	7,212.0	9,603.1	7,232.0	53.5	51.6	91.17	23.2	1,678.3	979.2	877.4	101.87	9.612		
9,900.0	7,212.0	9,702.7	7,232.0	55.7	54.0	91.19	19.7	1,777.8	970.5	863.9	106.58	9.106		
10,000.0	7,212.0	9,802.3	7,232.0	58.0	56.4	91.20	16.3	1,877.4	961.8	850.5	111.30	8.642		
10,100.0	7,212.0	9,901.9	7,232.0	60.3	58.8	91.21	12.8	1,977.0	953.1	837.1	116.03	8.214		
10,200.0	7,212.0	10,001.6	7,232.0	62.6	61.1	91.22	9.3	2,076.5	944.4	823.6	120.79	7.819		
10,300.0	7,212.0	10,101.2	7,232.0	64.9	63.5	91.23	5.8	2,176.1	935.7	810.1	125.55	7.452		
10,400.0	7,212.0	10,200.8	7,232.0	67.2	65.9	91.24	2.4	2,275.6	927.0	796.6	130.33	7.113		
10,500.0	7,212.0	10,300.4	7,232.0	69.5	68.3	91.25	-1.1	2,375.2	918.2	783.1	135.11	6.796		
10,600.0	7,212.0	10,400.0	7,232.0	71.8	70.7	91.26	-4.6	2,474.8	909.5	769.6	139.91	6.501		
10,700.0	7,212.0	10,499.6	7,232.0	74.2	73.2	91.28	-8.1	2,574.3	900.8	756.1	144.71	6.225		
10,800.0	7,212.0	10,599.3	7,232.0	76.5	75.6	91.29	-11.5	2,673.9	892.1	742.6	149.52	5.966		
10,900.0	7,212.0	10,698.9	7,232.0	78.9	78.0	91.30	-15.0	2,773.4	883.4	729.0	154.34	5.724		
11,000.0	7,212.0	10,798.5	7,232.0	81.2	80.4	91.32	-18.5	2,873.0	874.7	715.5	159.16	5.495		
11,100.0	7,212.0	10,898.1	7,232.0	83.6	82.8	91.33	-22.0	2,972.6	866.0	702.0	163.99	5.280		
11,200.0	7,212.0	10,997.7	7,232.0	85.9	85.3	91.34	-25.5	3,072.1	857.2	688.4	168.83	5.078		
11,300.0	7,212.0	11,097.4	7,232.0	88.3	87.7	91.36	-28.9	3,171.7	848.5	674.9	173.67	4.886		
11,400.0	7,212.0	11,197.0	7,232.0	90.7	90.1	91.37	-32.4	3,271.2	839.8	661.3	178.51	4.705		
11,500.0	7,212.0	11,296.6	7,232.0	93.1	92.6	91.38	-35.9	3,370.8	831.1	647.8	183.36	4.533		
11,600.0	7,212.0	11,396.2	7,232.0	95.5	95.0	91.40	-39.4	3,470.3	822.4	634.2	188.21	4.370		
11,700.0	7,212.0	11,495.8	7,232.0	97.9	97.4	91.41	-42.8	3,569.9	813.7	620.6	193.06	4.215		
11,800.0	7,212.0	11,595.5	7,232.0	100.3	99.9	91.43	-46.3	3,669.5	805.0	607.1	197.92	4.067		
11,900.0	7,212.0	11,695.1	7,232.0	102.7	102.3	91.44	-49.8	3,769.0	796.3	593.5	202.78	3.927		
12,000.0	7,212.0	11,794.7	7,232.0	105.1	104.7	91.46	-53.3	3,868.6	787.5	579.9	207.64	3.793		
12,008.3	7,212.0	11,803.0	7,232.0	105.3	104.9	91.46	-53.6	3,876.9	786.8	578.8	208.05	3.782		

## Anticollision Report

<b>Company:</b>	EnCana Oil & Gas (USA) Inc	<b>Local Co-ordinate Reference:</b>	Well Sheley 3B-4H
<b>Project:</b>	DJ Wattenberg	<b>TVD Reference:</b>	KBE @ 4925.0ft (Original Well Elev)
<b>Reference Site:</b>	SWSW S4-T2N-R67W (Sheley)	<b>MD Reference:</b>	KBE @ 4925.0ft (Original Well Elev)
<b>Site Error:</b>	0.0ft	<b>North Reference:</b>	True
<b>Reference Well:</b>	Sheley 3B-4H	<b>Survey Calculation Method:</b>	Minimum Curvature
<b>Well Error:</b>	0.0ft	<b>Output errors are at</b>	2.00 sigma
<b>Reference Wellbore</b>	HZ	<b>Database:</b>	USA EDM 5000 Multi Users DB
<b>Reference Design:</b>	Plan #2	<b>Offset TVD Reference:</b>	Offset Datum

Reference Depths are relative to KBE @ 4925.0ft (Original Well Elev)

Offset Depths are relative to Offset Datum

Central Meridian is -105.500000 °

Coordinates are relative to: Sheley 3B-4H

Coordinate System is US State Plane 1983, Colorado Northern Zone

Grid Convergence at Surface is: 0.39°

